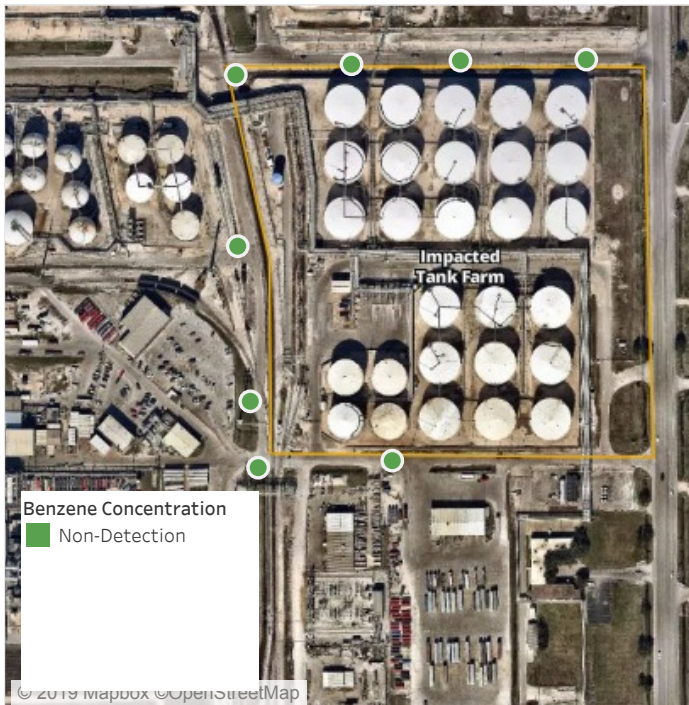


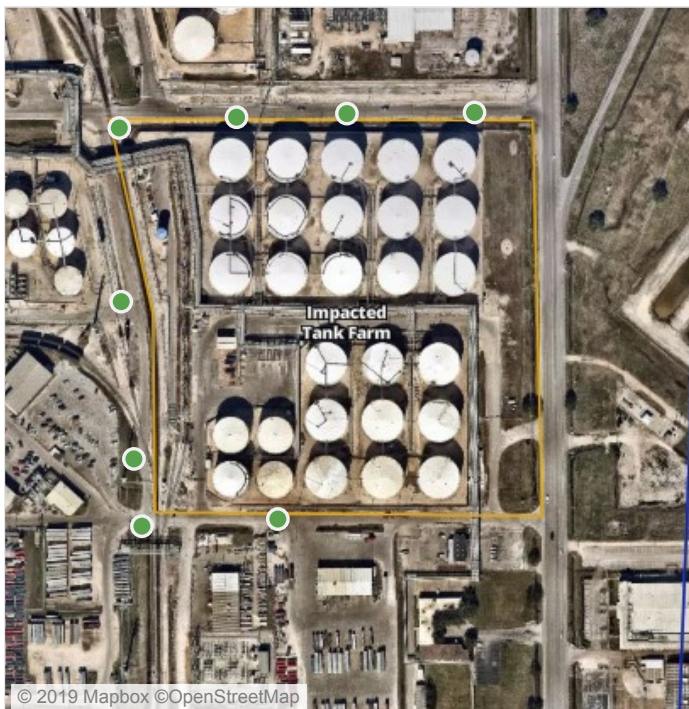
# Preliminary Hand- Held Air Monitoring Locations | ITC Deer Park Tank Fire

## Reading Date

7/9/2019 11:00:00 PM to 7/10/2019 12:00:00 AM



Recent Benzene Detections



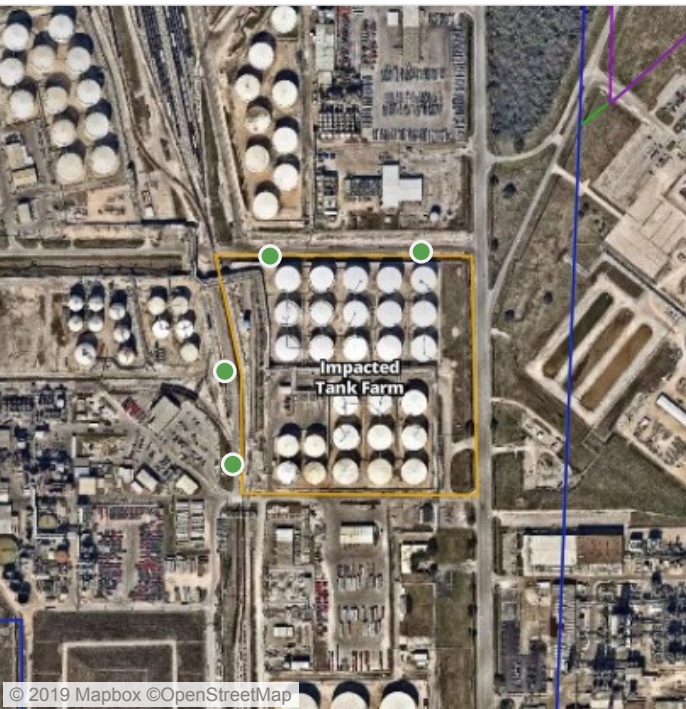
This data has been provided expeditiously to ITC and regulatory agencies for informational and/or operational purposes only. Data reported within this summary is preliminary in nature and has not undergone complete QA/QC (quality assurance/quality control) process. Until this complete QA/QC process is completed, the locations of each reading are approximate in nature and subject to further refinement. As some readings may represent non-brea..

# Preliminary Hand- Held Air Monitoring Locations | ITC Deer Park Tank Fire

Reading Date  
7/10/2019 12:00:00 AM to 7/10/2019 1:00:00 AM



Recent Benzene Detections

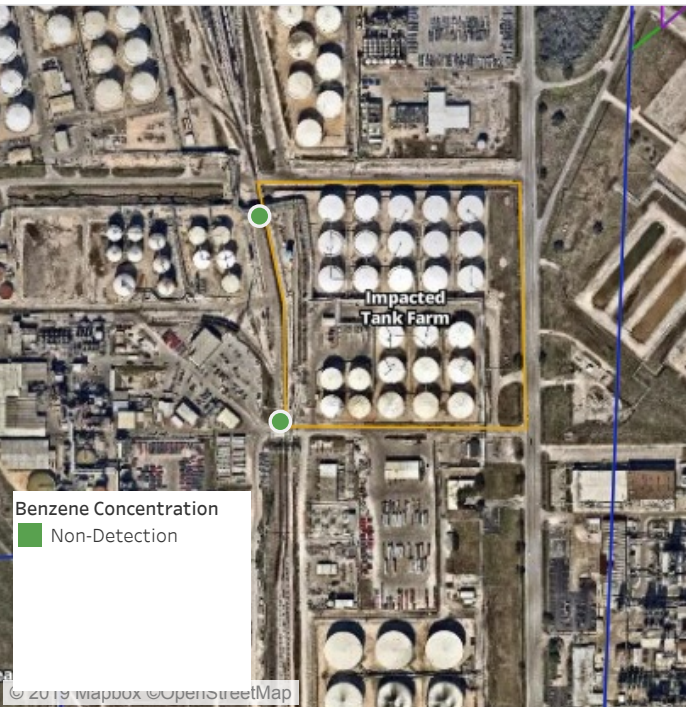


This data has been provided expeditiously to ITC and regulatory agencies for informational and/or operational purposes only. Data reported within this summary is preliminary in nature and has not undergone complete QA/QC (quality assurance/quality control) process. Until this complete QA/QC process is completed, the locations of each reading are approximate in nature and subject to further refinement. As some readings may represent non-brea..



# Preliminary Hand- Held Air Monitoring Locations | ITC Deer Park Tank Fire

Reading Date  
7/10/2019 1:00:00 AM to 7/10/2019 2:00:00 AM



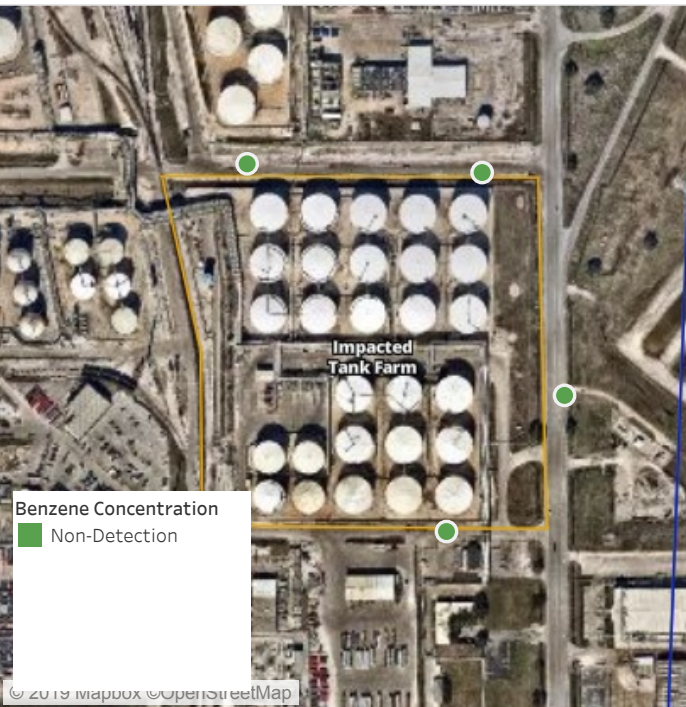
Recent Benzene Detections



This data has been provided expeditiously to ITC and regulatory agencies for informational and/or operational purposes only. Data reported within this summary is preliminary in nature and has not undergone complete QA/QC (quality assurance/quality control) process. Until this complete QA/QC process is completed, the locations of each reading are approximate in nature and subject to further refinement. As some readings may represent non-brea..

# Preliminary Hand- Held Air Monitoring Locations | ITC Deer Park Tank Fire

Reading Date  
7/10/2019 2:00:00 AM to 7/10/2019 4:00:00 AM



Recent Benzene Detections

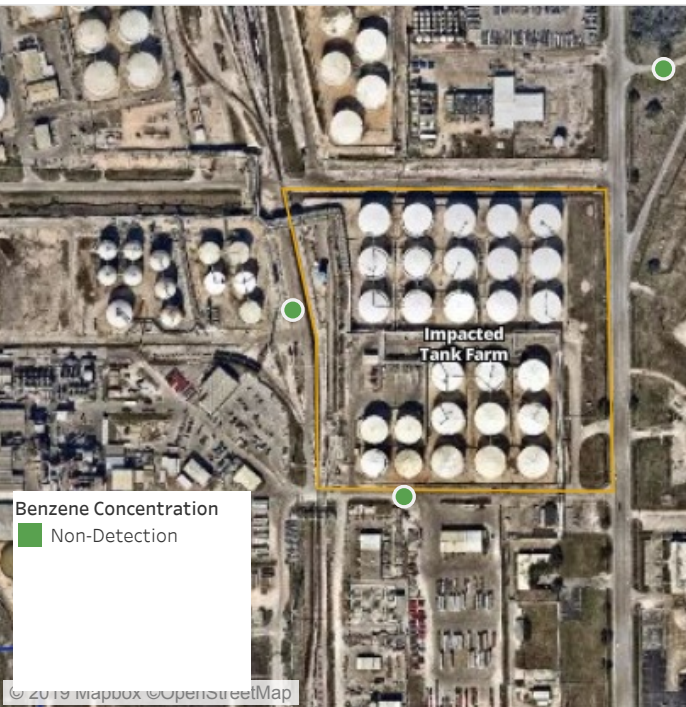


This data has been provided expeditiously to ITC and regulatory agencies for informational and/or operational purposes only. Data reported within this summary is preliminary in nature and has not undergone complete QA/QC (quality assurance/quality control) process. Until this complete QA/QC process is completed, the locations of each reading are approximate in nature and subject to further refinement. As some readings may represent non-brea..



# Preliminary Hand- Held Air Monitoring Locations | ITC Deer Park Tank Fire

Reading Date  
7/10/2019 4:00:00 AM to 7/10/2019 5:00:00 AM



Recent Benzene Detections



This data has been provided expeditiously to ITC and regulatory agencies for informational and/or operational purposes only. Data reported within this summary is preliminary in nature and has not undergone complete QA/QC (quality assurance/quality control) process. Until this complete QA/QC process is completed, the locations of each reading are approximate in nature and subject to further refinement. As some readings may represent non-brea..

# Preliminary Hand- Held Air Monitoring Locations | ITC Deer Park Tank Fire

Reading Date  
7/10/2019 5:00:00 AM to 7/10/2019 6:00:00 AM



## Recent Benzene Detections

Location Category	Reading Date	Range of Detections
Division E	7/10/2019 05:51:09	0.07000 ppm

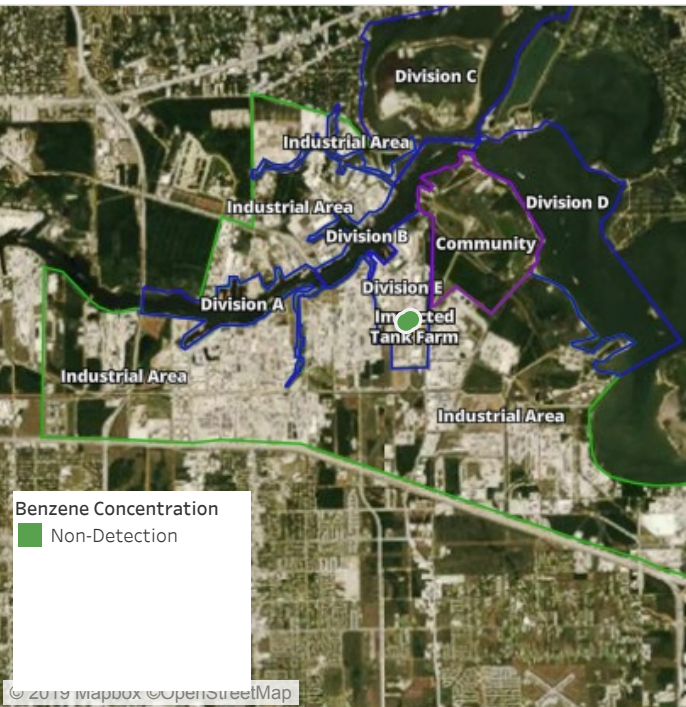


This data has been provided expeditiously to ITC and regulatory agencies for informational and/or operational purposes only. Data reported within this summary is preliminary in nature and has not undergone complete QA/QC (quality assurance/quality control) process. Until this complete QA/QC process is completed, the locations of each reading are approximate in nature and subject to further refinement. As some readings may represent non-brea..



# Preliminary Hand- Held Air Monitoring Locations | ITC Deer Park Tank Fire

Reading Date  
7/10/2019 6:00:00 AM to 7/10/2019 7:00:00 AM



Recent Benzene Detections



This data has been provided expeditiously to ITC and regulatory agencies for informational and/or operational purposes only. Data reported within this summary is preliminary in nature and has not undergone complete QA/QC (quality assurance/quality control) process. Until this complete QA/QC process is completed, the locations of each reading are approximate in nature and subject to further refinement. As some readings may represent non-brea..

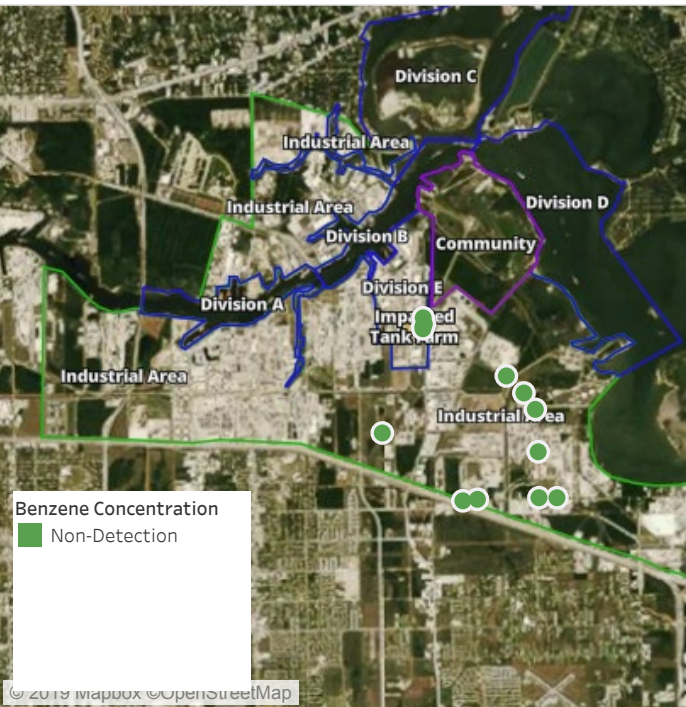


**Please Note:** These updates display data from the 2<sup>nd</sup> 80's Fire site (Impacted Tank Farm), in the industrial areas surrounding the 2<sup>nd</sup> 80's Fire site (US Coast Guard Division E), within the Houston Ship Channel (US Coast Guard Divisions A-D), and in the industrial areas north and south of the Houston Ship Channel (Industrial Area). Real-time air monitoring data for the surrounding communities are communicated daily in a separate report.

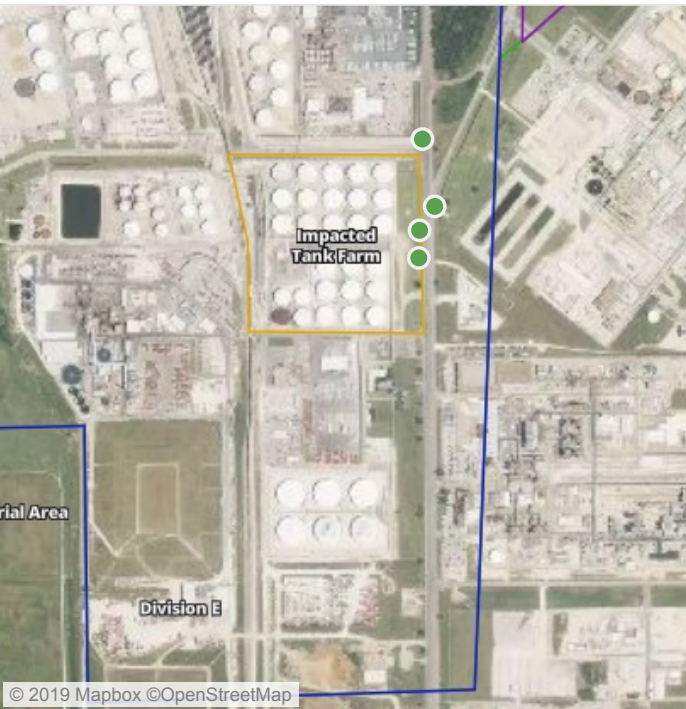


# Preliminary Hand- Held Air Monitoring Locations | ITC Deer Park Tank Fire

Reading Date  
7/10/2019 7:00:00 AM to 7/10/2019 8:00:00 AM



Recent Benzene Detections



This data has been provided expeditiously to ITC and regulatory agencies for informational and/or operational purposes only. Data reported within this summary is preliminary in nature and has not undergone complete QA/QC (quality assurance/quality control) process. Until this complete QA/QC process is completed, the locations of each reading are approximate in nature and subject to further refinement. As some readings may represent non-brea..

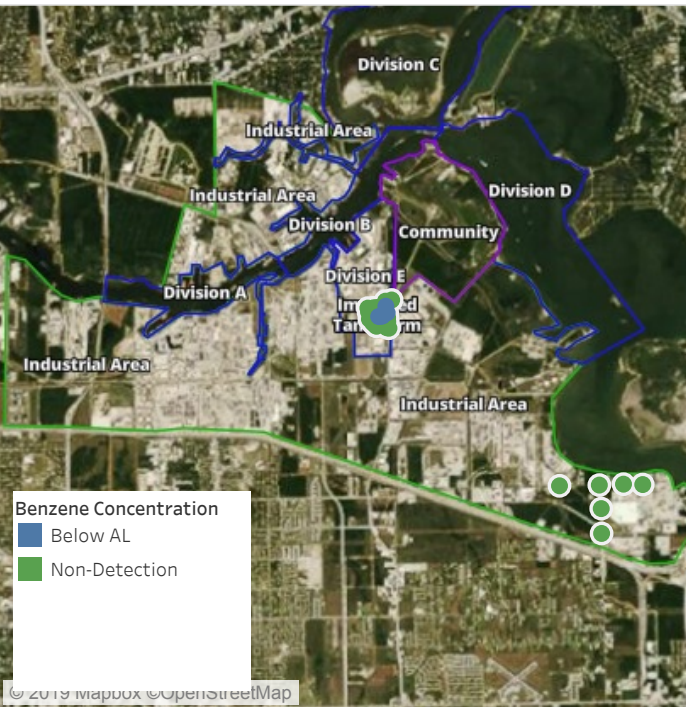


**Please Note:** These updates display data from the 2<sup>nd</sup> 80's Fire site (Impacted Tank Farm), in the industrial areas surrounding the 2<sup>nd</sup> 80's Fire site (US Coast Guard Division E), within the Houston Ship Channel (US Coast Guard Divisions A-D), and in the industrial areas north and south of the Houston Ship Channel (Industrial Area). Real-time air monitoring data for the surrounding communities are communicated daily in a separate report.



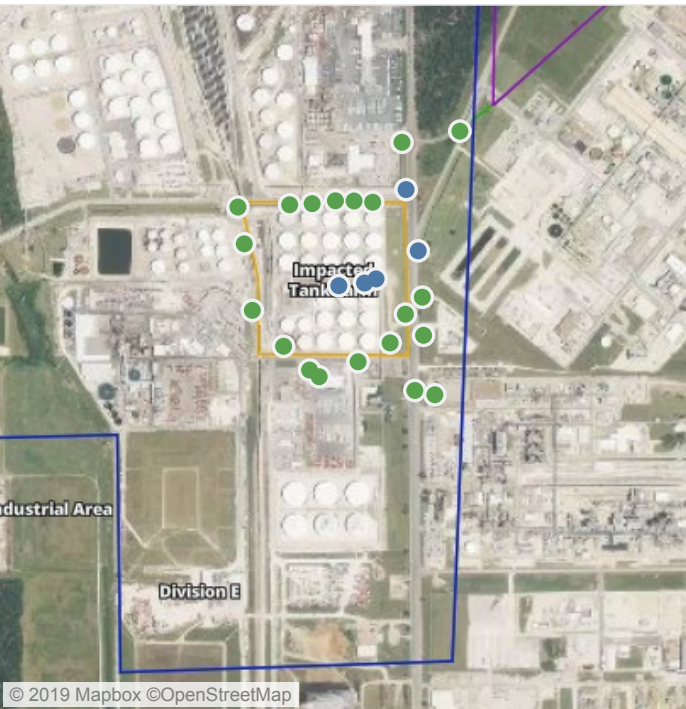
# Preliminary Hand- Held Air Monitoring Locations | ITC Deer Park Tank Fire

Reading Date  
7/10/2019 8:00:00 AM to 7/10/2019 9:00:00 AM



## Recent Benzene Detections

Location Category	Reading Date	Range of Detections
Division E	7/10/2019 08:49:42	0.05000 ppm
	7/10/2019 08:58:34	0.05000 ppm
Impacted Tank Farm	7/10/2019 08:48:19	0.04000 ppm
	7/10/2019 08:52:57	0.04000 ppm
	7/10/2019 08:55:40	0.04000 ppm



This data has been provided expeditiously to ITC and regulatory agencies for informational and/or operational purposes only. Data reported within this summary is preliminary in nature and has not undergone complete QA/QC (quality assurance/quality control) process. Until this complete QA/QC process is completed, the locations of each reading are approximate in nature and subject to further refinement. As some readings may represent non-brea..

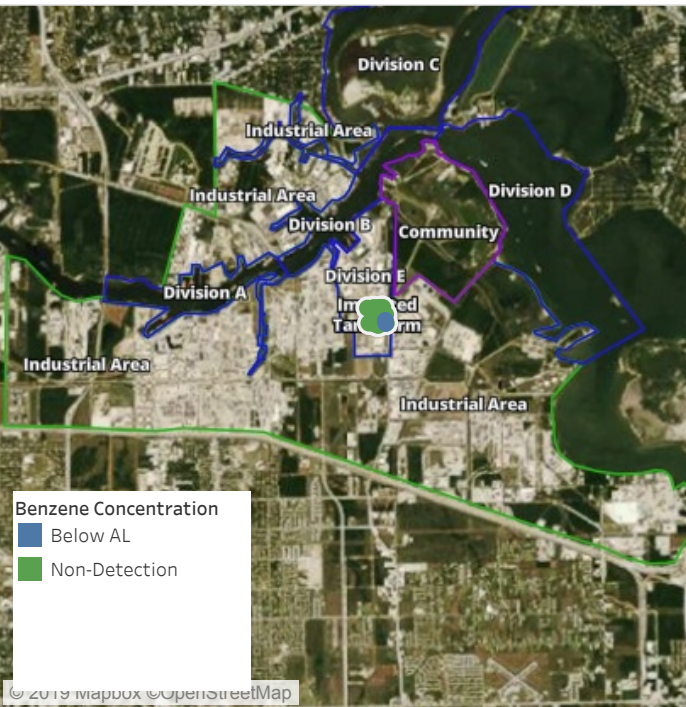


**Please Note:** These updates display data from the 2<sup>nd</sup> 80's Fire site (Impacted Tank Farm), in the industrial areas surrounding the 2<sup>nd</sup> 80's Fire site (US Coast Guard Division E), within the Houston Ship Channel (US Coast Guard Divisions A-D), and in the industrial areas north and south of the Houston Ship Channel (Industrial Area). Real-time air monitoring data for the surrounding communities are communicated daily in a separate report.



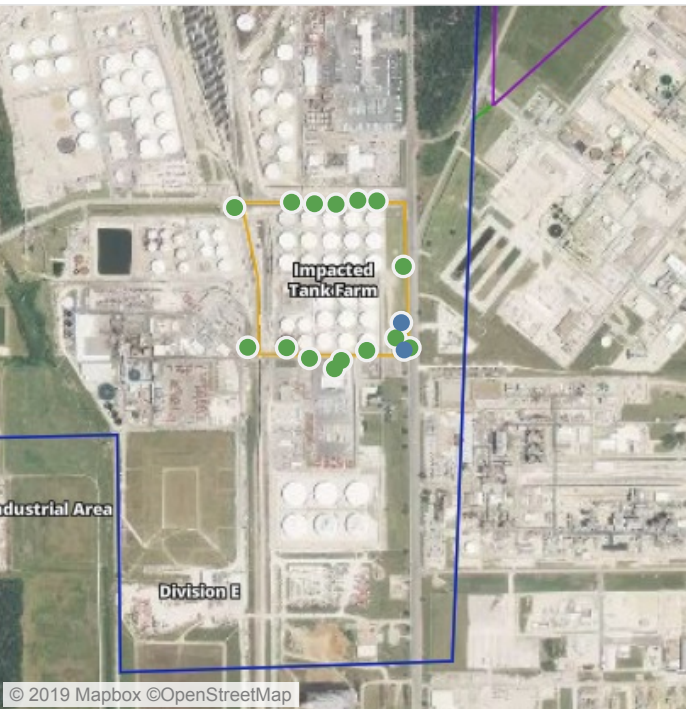
# Preliminary Hand- Held Air Monitoring Locations | ITC Deer Park Tank Fire

Reading Date  
7/10/2019 9:00:00 AM to 7/10/2019 10:00:00 AM



## Recent Benzene Detections

Location Category	Reading Date	Range of Detections
Division E	7/10/2019 09:06:05	0.0400 ppm
	7/10/2019 09:35:23	0.2100 ppm



This data has been provided expeditiously to ITC and regulatory agencies for informational and/or operational purposes only. Data reported within this summary is preliminary in nature and has not undergone complete QA/QC (quality assurance/quality control) process. Until this complete QA/QC process is completed, the locations of each reading are approximate in nature and subject to further refinement. As some readings may represent non-brea..

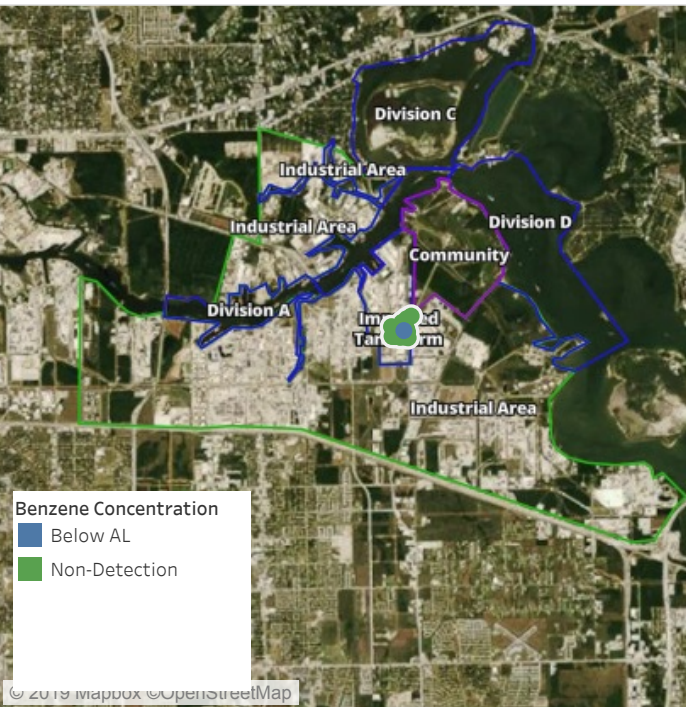


**Please Note:** These updates display data from the 2<sup>nd</sup> 80's Fire site (Impacted Tank Farm), in the industrial areas surrounding the 2<sup>nd</sup> 80's Fire site (US Coast Guard Division E), within the Houston Ship Channel (US Coast Guard Divisions A-D), and in the industrial areas north and south of the Houston Ship Channel (Industrial Area). Real-time air monitoring data for the surrounding communities are communicated daily in a separate report.



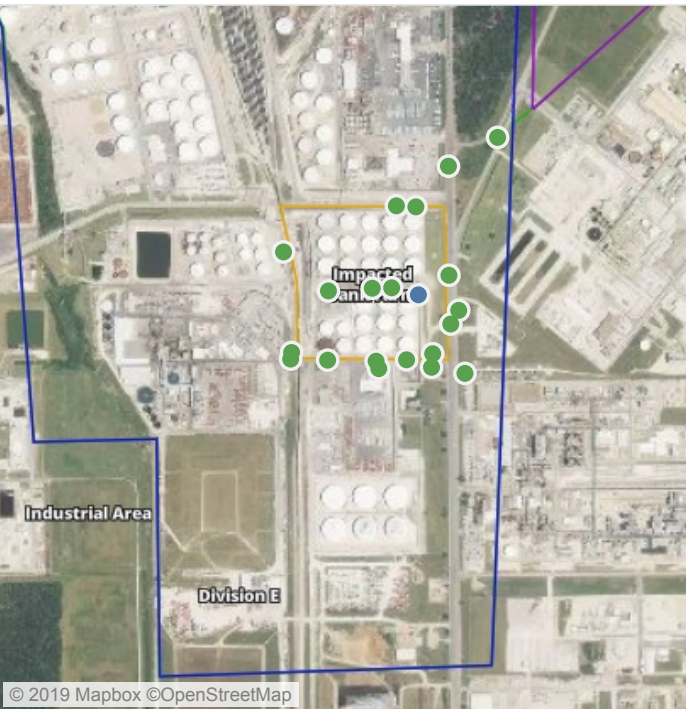
# Preliminary Hand- Held Air Monitoring Locations | ITC Deer Park Tank Fire

Reading Date  
7/10/2019 10:00:00 AM to 7/10/2019 11:00:00 AM



## Recent Benzene Detections

Location Category	Reading Date	Range of Detections
Impacted Tank Farm	7/10/2019 10:35:15	0.1200 ppm



This data has been provided expeditiously to ITC and regulatory agencies for informational and/or operational purposes only. Data reported within this summary is preliminary in nature and has not undergone complete QA/QC (quality assurance/quality control) process. Until this complete QA/QC process is completed, the locations of each reading are approximate in nature and subject to further refinement. As some readings may represent non-brea..

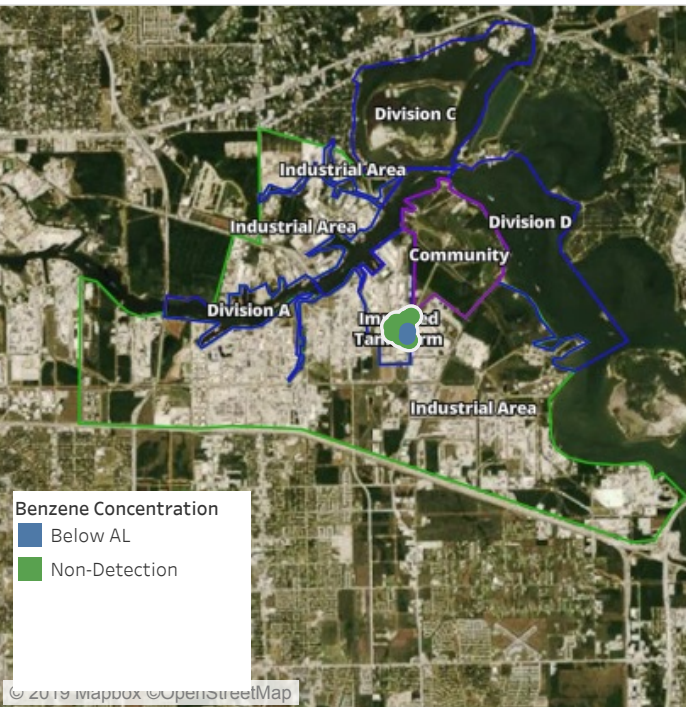


**Please Note:** These updates display data from the 2<sup>nd</sup> 80's Fire site (Impacted Tank Farm), in the industrial areas surrounding the 2<sup>nd</sup> 80's Fire site (US Coast Guard Division E), within the Houston Ship Channel (US Coast Guard Divisions A-D), and in the industrial areas north and south of the Houston Ship Channel (Industrial Area). Real-time air monitoring data for the surrounding communities are communicated daily in a separate report.



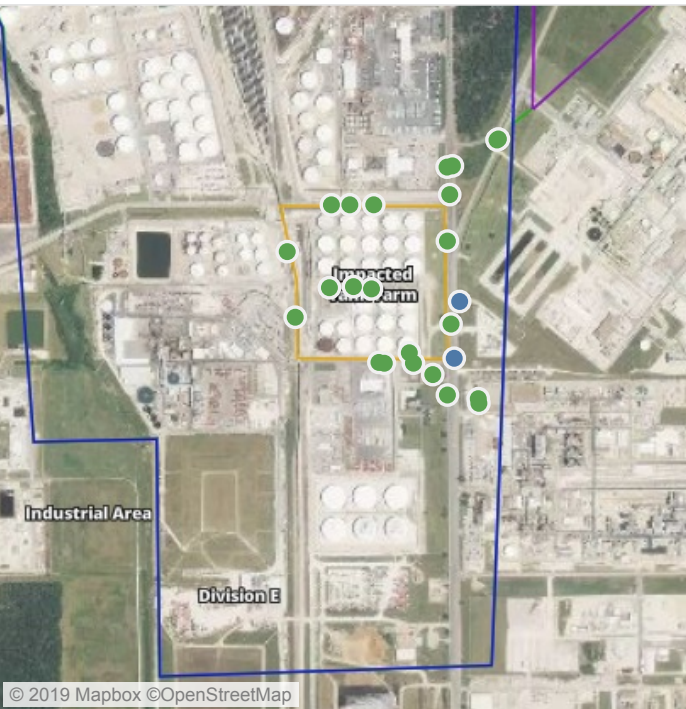
# Preliminary Hand- Held Air Monitoring Locations | ITC Deer Park Tank Fire

Reading Date  
7/10/2019 11:00:00 AM to 7/10/2019 12:00:00 PM



## Recent Benzene Detections

Location Category	Reading Date	Range of Detections
Division E	7/10/2019 11:17:06	0.04000 ppm
	7/10/2019 11:52:11	0.02000 ppm



This data has been provided expeditiously to ITC and regulatory agencies for informational and/or operational purposes only. Data reported within this summary is preliminary in nature and has not undergone complete QA/QC (quality assurance/quality control) process. Until this complete QA/QC process is completed, the locations of each reading are approximate in nature and subject to further refinement. As some readings may represent non-brea..

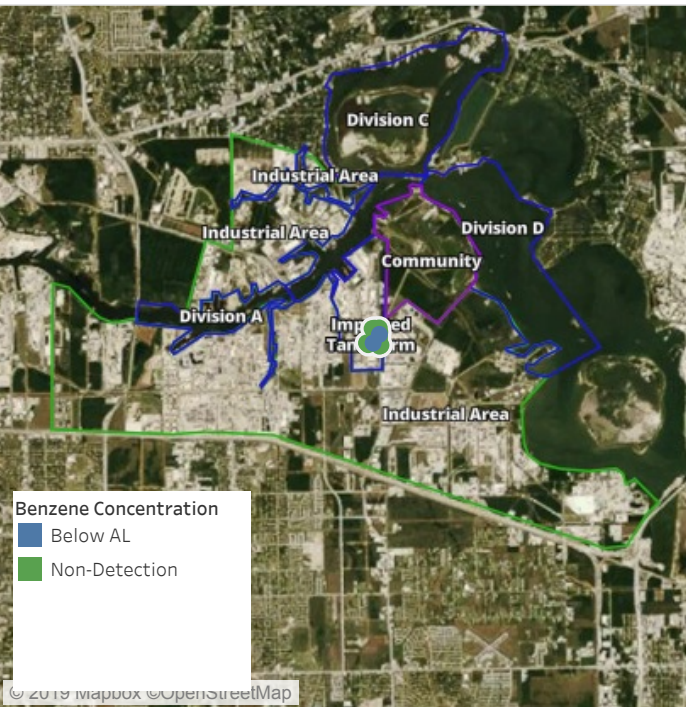


**Please Note:** These updates display data from the 2<sup>nd</sup> 80's Fire site (Impacted Tank Farm), in the industrial areas surrounding the 2<sup>nd</sup> 80's Fire site (US Coast Guard Division E), within the Houston Ship Channel (US Coast Guard Divisions A-D), and in the industrial areas north and south of the Houston Ship Channel (Industrial Area). Real-time air monitoring data for the surrounding communities are communicated daily in a separate report.



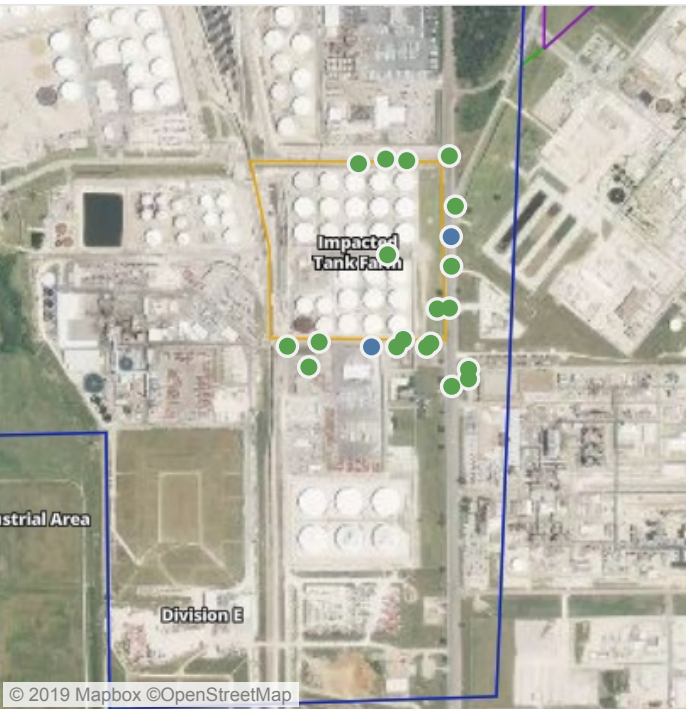
# Preliminary Hand- Held Air Monitoring Locations | ITC Deer Park Tank Fire

Reading Date  
7/10/2019 12:00:00 PM to 7/10/2019 1:00:00 PM



## Recent Benzene Detections

Location Category	Reading Date	Range of Detections
Division E	7/10/2019 12:07:52	0.02000 ppm
	7/10/2019 12:37:53	0.03000 ppm



This data has been provided expeditiously to ITC and regulatory agencies for informational and/or operational purposes only. Data reported within this summary is preliminary in nature and has not undergone complete QA/QC (quality assurance/quality control) process. Until this complete QA/QC process is completed, the locations of each reading are approximate in nature and subject to further refinement. As some readings may represent non-brea..

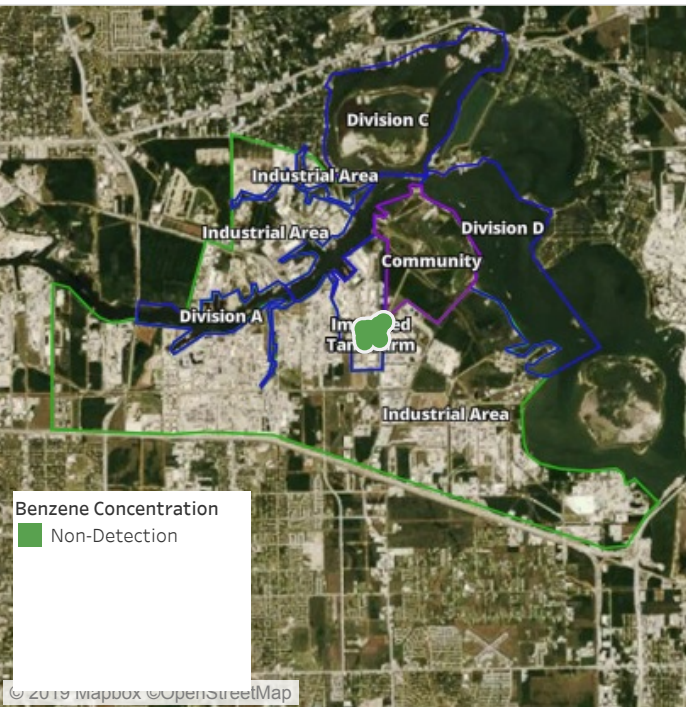


**Please Note:** These updates display data from the 2<sup>nd</sup> 80's Fire site (Impacted Tank Farm), in the industrial areas surrounding the 2<sup>nd</sup> 80's Fire site (US Coast Guard Division E), within the Houston Ship Channel (US Coast Guard Divisions A-D), and in the industrial areas north and south of the Houston Ship Channel (Industrial Area). Real-time air monitoring data for the surrounding communities are communicated daily in a separate report.

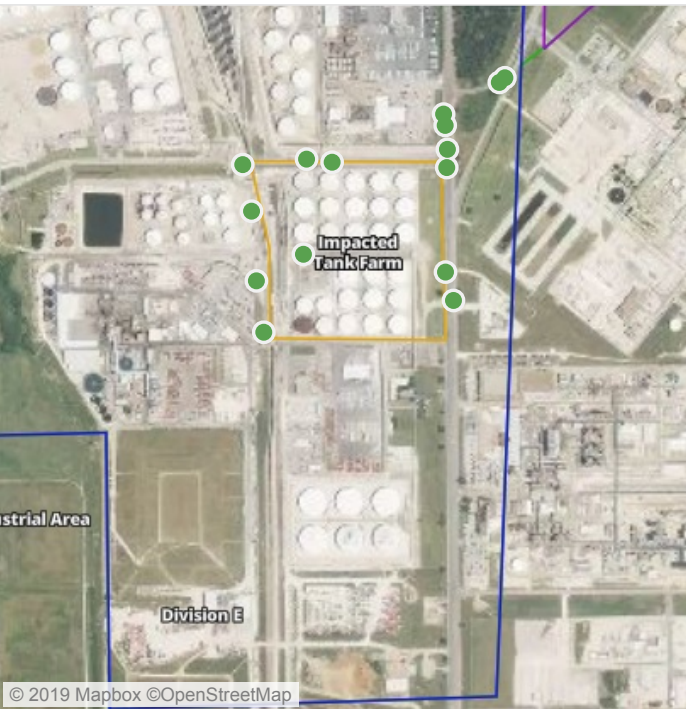


# Preliminary Hand- Held Air Monitoring Locations | ITC Deer Park Tank Fire

Reading Date  
7/10/2019 1:00:00 PM to 7/10/2019 2:00:00 PM



Recent Benzene Detections



This data has been provided expeditiously to ITC and regulatory agencies for informational and/or operational purposes only. Data reported within this summary is preliminary in nature and has not undergone complete QA/QC (quality assurance/quality control) process. Until this complete QA/QC process is completed, the locations of each reading are approximate in nature and subject to further refinement. As some readings may represent non-brea..

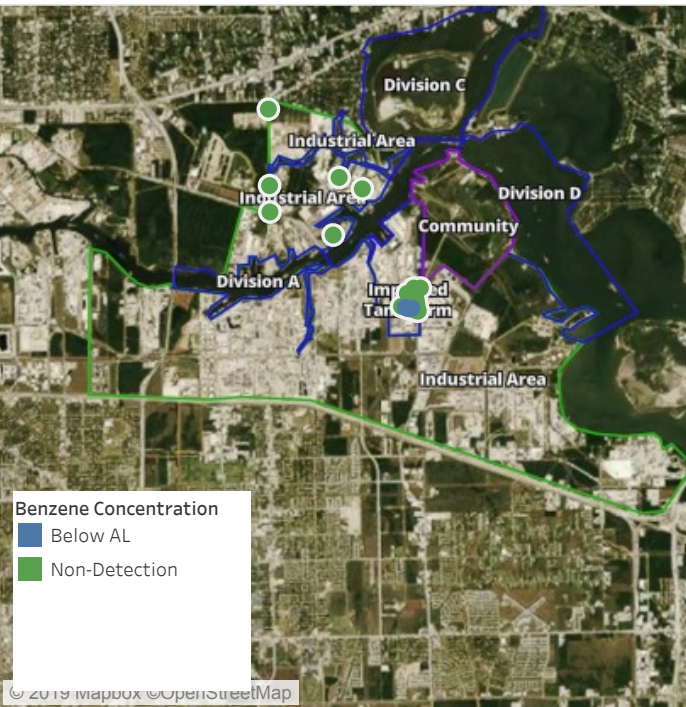


**Please Note:** These updates display data from the 2<sup>nd</sup> 80's Fire site (Impacted Tank Farm), in the industrial areas surrounding the 2<sup>nd</sup> 80's Fire site (US Coast Guard Division E), within the Houston Ship Channel (US Coast Guard Divisions A-D), and in the industrial areas north and south of the Houston Ship Channel (Industrial Area). Real-time air monitoring data for the surrounding communities are communicated daily in a separate report.



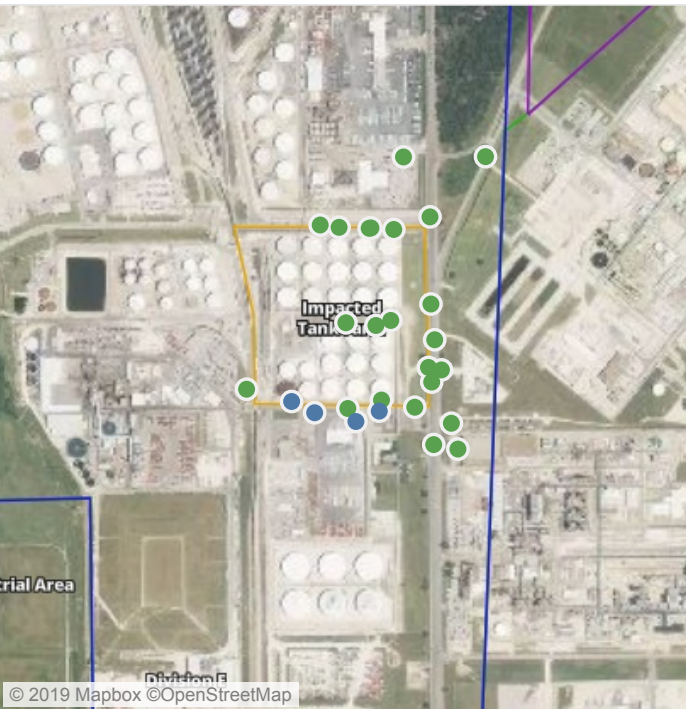
# Preliminary Hand- Held Air Monitoring Locations | ITC Deer Park Tank Fire

Reading Date  
7/10/2019 2:00:00 PM to 7/10/2019 3:00:00 PM



## Recent Benzene Detections

Location Category	Reading Date	Range of Detections
Division E	7/10/2019 14:17:22	0.12000 ppm
	7/10/2019 14:22:38	0.04000 ppm
	7/10/2019 14:20:33	0.04000 ppm
	7/10/2019 14:15:20	0.08000 ppm



This data has been provided expeditiously to ITC and regulatory agencies for informational and/or operational purposes only. Data reported within this summary is preliminary in nature and has not undergone complete QA/QC (quality assurance/quality control) process. Until this complete QA/QC process is completed, the locations of each reading are approximate in nature and subject to further refinement. As some readings may represent non-brea..

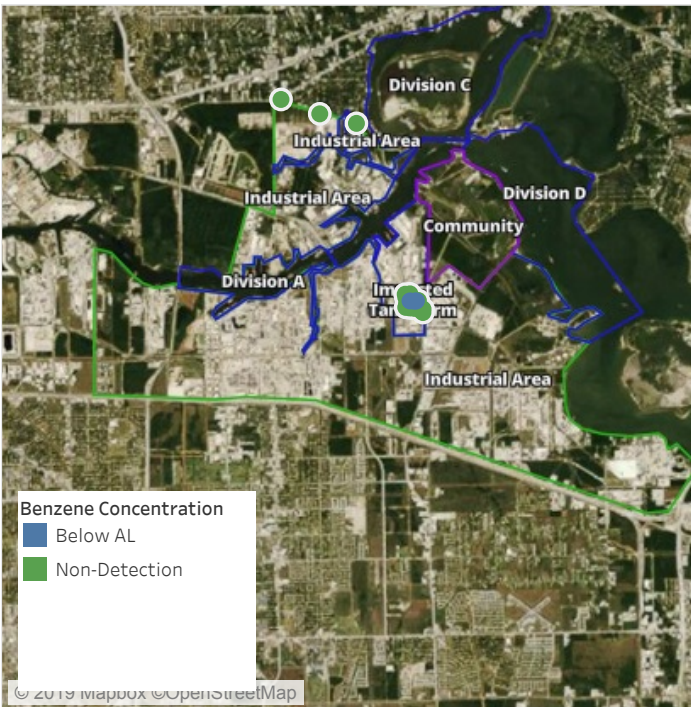


**Please Note:** These updates display data from the 2<sup>nd</sup> 80's Fire site (Impacted Tank Farm), in the industrial areas surrounding the 2<sup>nd</sup> 80's Fire site (US Coast Guard Division E), within the Houston Ship Channel (US Coast Guard Divisions A-D), and in the industrial areas north and south of the Houston Ship Channel (Industrial Area). Real-time air monitoring data for the surrounding communities are communicated daily in a separate report.



# Preliminary Hand- Held Air Monitoring Locations | ITC Deer Park Tank Fire

Reading Date  
7/10/2019 3:00:00 PM to 7/10/2019 4:00:00 PM



## Recent Benzene Detections

Location Category	Reading Date	Range of Detections
Impacted Tank Farm	7/10/2019 15:37:48	0.08000 ppm
	7/10/2019 15:42:25	0.09000 ppm
	7/10/2019 15:44:02	0.03000 ppm



This data has been provided expeditiously to ITC and regulatory agencies for informational and/or operational purposes only. Data reported within this summary is preliminary in nature and has not undergone complete QA/QC (quality assurance/quality control) process. Until this complete QA/QC process is completed, the locations of each reading are approximate in nature and subject to further refinement. As some readings may represent non-brea..

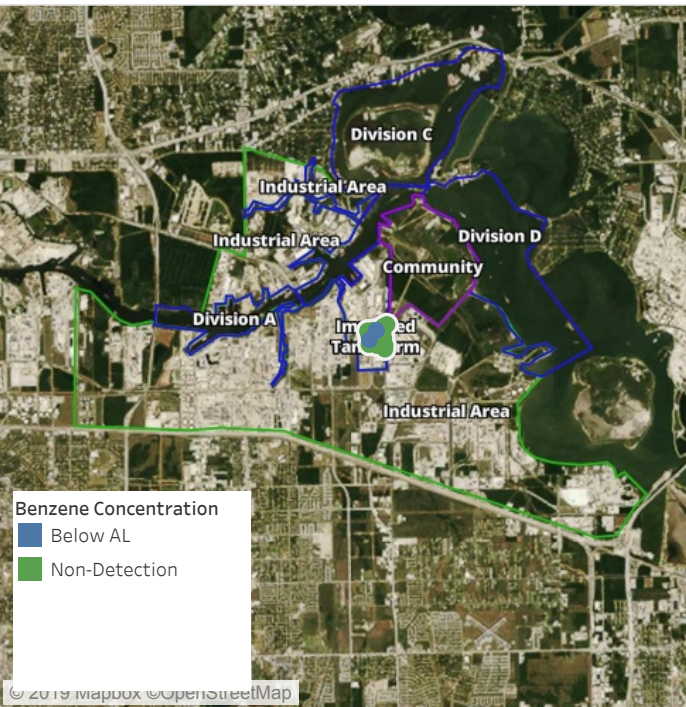


**Please Note:** These updates display data from the 2<sup>nd</sup> 80's Fire site (Impacted Tank Farm), in the industrial areas surrounding the 2<sup>nd</sup> 80's Fire site (US Coast Guard Division E), within the Houston Ship Channel (US Coast Guard Divisions A-D), and in the industrial areas north and south of the Houston Ship Channel (Industrial Area). Real-time air monitoring data for the surrounding communities are communicated daily in a separate report.



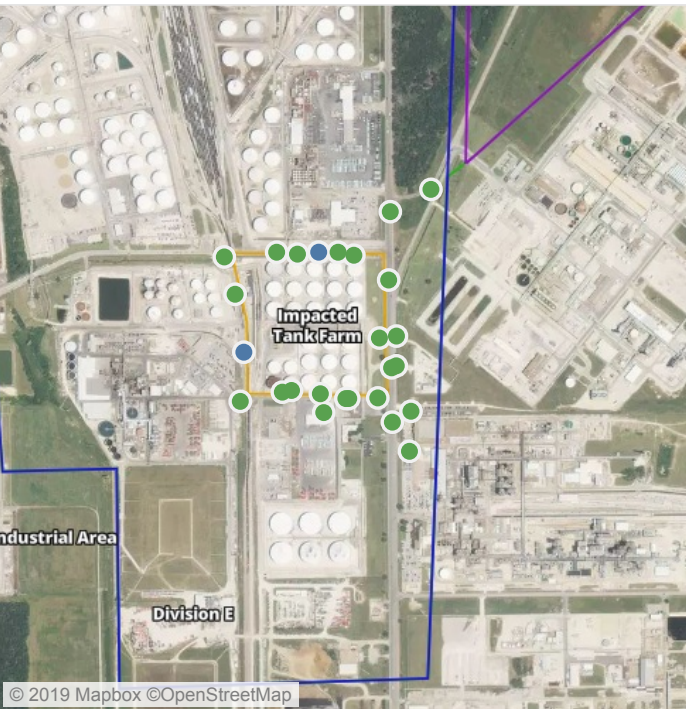
# Preliminary Hand- Held Air Monitoring Locations | ITC Deer Park Tank Fire

Reading Date  
7/10/2019 4:00:00 PM to 7/10/2019 5:00:00 PM



## Recent Benzene Detections

Location Category	Reading Date	Range of Detections
Division E	7/10/2019 16:21:44	0.03000 ppm
	7/10/2019 16:55:00	0.02000 ppm



This data has been provided expeditiously to ITC and regulatory agencies for informational and/or operational purposes only. Data reported within this summary is preliminary in nature and has not undergone complete QA/QC (quality assurance/quality control) process. Until this complete QA/QC process is completed, the locations of each reading are approximate in nature and subject to further refinement. As some readings may represent non-brea..

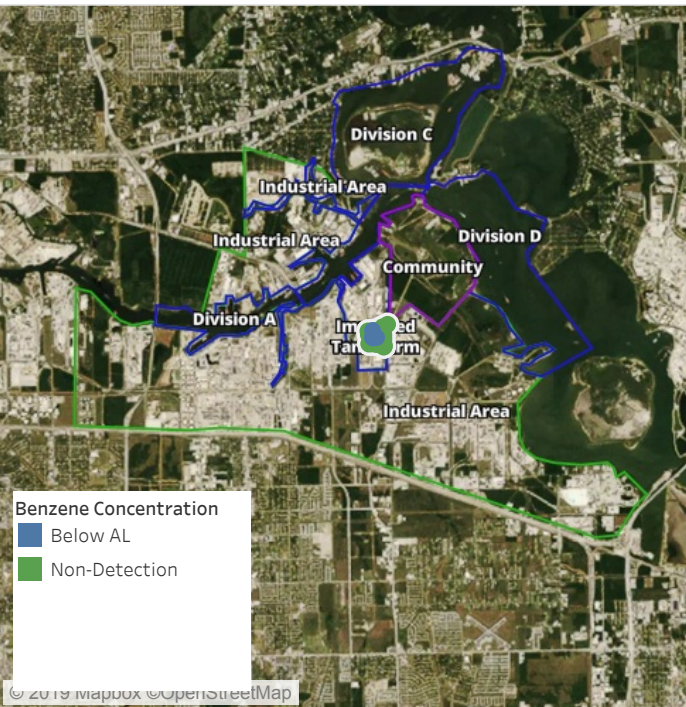


**Please Note:** These updates display data from the 2<sup>nd</sup> 80's Fire site (Impacted Tank Farm), in the industrial areas surrounding the 2<sup>nd</sup> 80's Fire site (US Coast Guard Division E), within the Houston Ship Channel (US Coast Guard Divisions A-D), and in the industrial areas north and south of the Houston Ship Channel (Industrial Area). Real-time air monitoring data for the surrounding communities are communicated daily in a separate report.



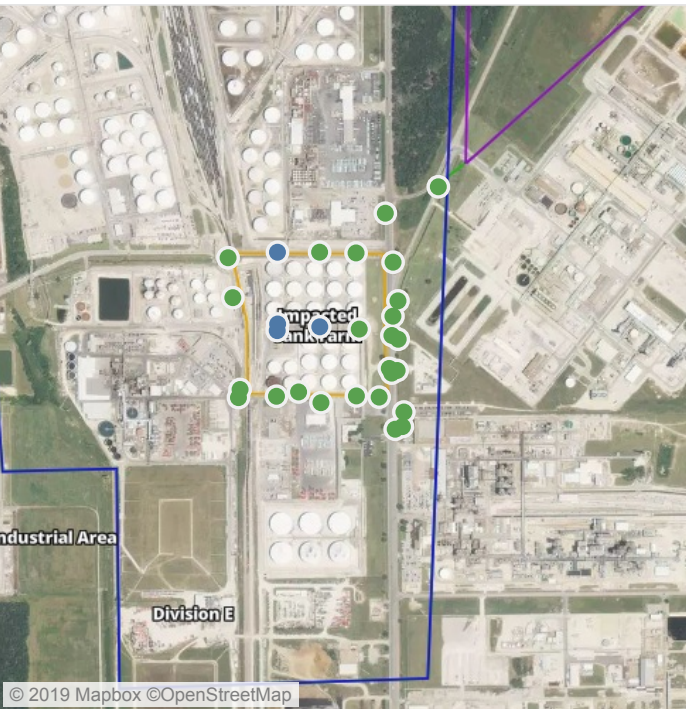
# Preliminary Hand- Held Air Monitoring Locations | ITC Deer Park Tank Fire

Reading Date  
7/10/2019 5:00:00 PM to 7/10/2019 6:00:00 PM



## Recent Benzene Detections

Location Category	Reading Date	Range of Detections
Division E	7/10/2019 17:32:42	0.0200 ppm
Impacted Tank Farm	7/10/2019 17:07:20	0.1200 ppm
	7/10/2019 17:09:16	0.2600 ppm
	7/10/2019 17:58:40	0.0700 ppm



This data has been provided expeditiously to ITC and regulatory agencies for informational and/or operational purposes only. Data reported within this summary is preliminary in nature and has not undergone complete QA/QC (quality assurance/quality control) process. Until this complete QA/QC process is completed, the locations of each reading are approximate in nature and subject to further refinement. As some readings may represent non-brea..



**Please Note:** These updates display data from the 2<sup>nd</sup> 80's Fire site (Impacted Tank Farm), in the industrial areas surrounding the 2<sup>nd</sup> 80's Fire site (US Coast Guard Division E), within the Houston Ship Channel (US Coast Guard Divisions A-D), and in the industrial areas north and south of the Houston Ship Channel (Industrial Area). Real-time air monitoring data for the surrounding communities are communicated daily in a separate report.



# Preliminary Hand- Held Air Monitoring Locations | ITC Deer Park Tank Fire

Reading Date  
7/10/2019 6:00:00 PM to 7/10/2019 7:00:00 PM



## Recent Benzene Detections

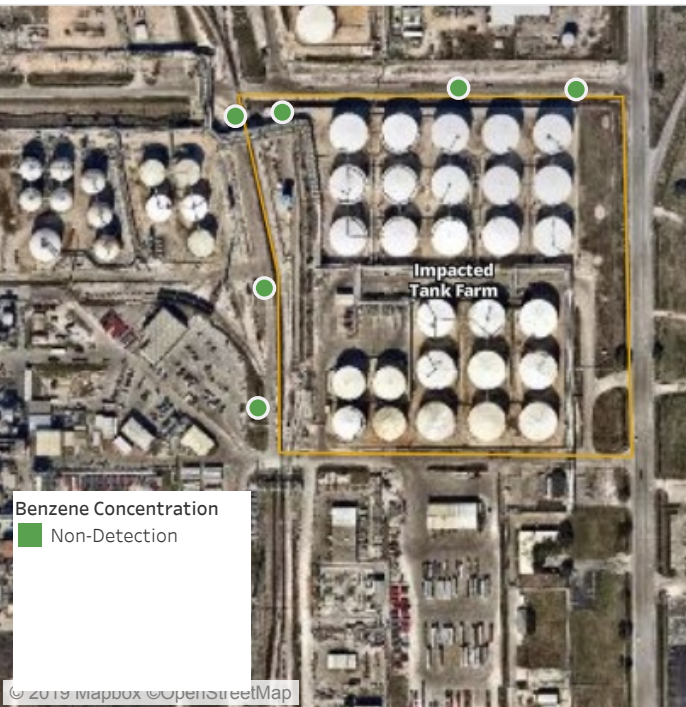
Location Category	Reading Date	Range of Detections
Impacted Tank Farm	7/10/2019 18:01:23	0.0700 ppm
	7/10/2019 18:05:15	0.0800 ppm
	7/10/2019 18:10:49	0.1800 ppm
	7/10/2019 18:16:03	0.2300 ppm



This data has been provided expeditiously to ITC and regulatory agencies for informational and/or operational purposes only. Data reported within this summary is preliminary in nature and has not undergone complete QA/QC (quality assurance/quality control) process. Until this complete QA/QC process is completed, the locations of each reading are approximate in nature and subject to further refinement. As some readings may represent non-brea..

# Preliminary Hand- Held Air Monitoring Locations | ITC Deer Park Tank Fire

Reading Date  
7/10/2019 7:00:00 PM to 7/10/2019 8:00:00 PM



Recent Benzene Detections

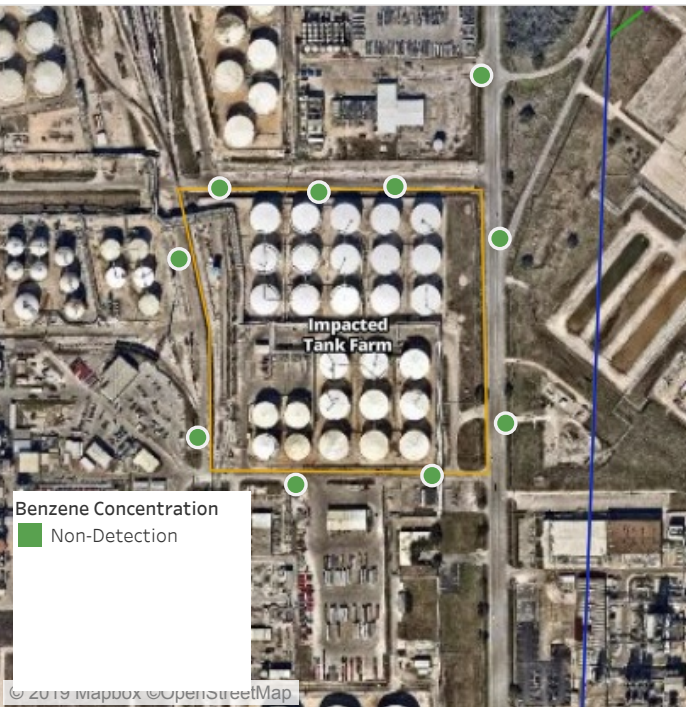


This data has been provided expeditiously to ITC and regulatory agencies for informational and/or operational purposes only. Data reported within this summary is preliminary in nature and has not undergone complete QA/QC (quality assurance/quality control) process. Until this complete QA/QC process is completed, the locations of each reading are approximate in nature and subject to further refinement. As some readings may represent non-brea..



# Preliminary Hand- Held Air Monitoring Locations | ITC Deer Park Tank Fire

Reading Date  
7/10/2019 8:00:00 PM to 7/10/2019 9:00:00 PM



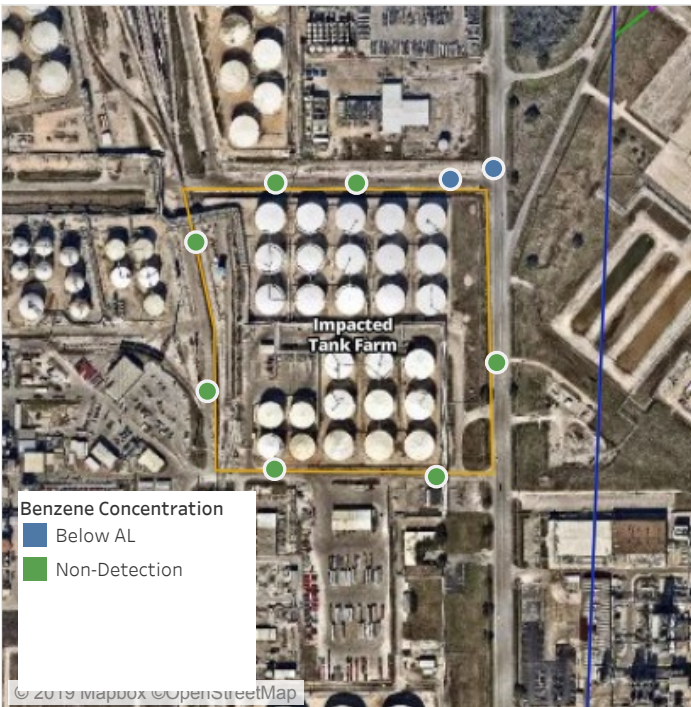
Recent Benzene Detections



This data has been provided expeditiously to ITC and regulatory agencies for informational and/or operational purposes only. Data reported within this summary is preliminary in nature and has not undergone complete QA/QC (quality assurance/quality control) process. Until this complete QA/QC process is completed, the locations of each reading are approximate in nature and subject to further refinement. As some readings may represent non-brea..

# Preliminary Hand- Held Air Monitoring Locations | ITC Deer Park Tank Fire

Reading Date  
7/10/2019 9:00:00 PM to 7/10/2019 10:00:00 PM



## Recent Benzene Detections

Location Category	Reading Date	Range of Detections
Division E	7/10/2019 21:51:08	0.06000 ppm
	7/10/2019 21:04:11	0.04000 ppm

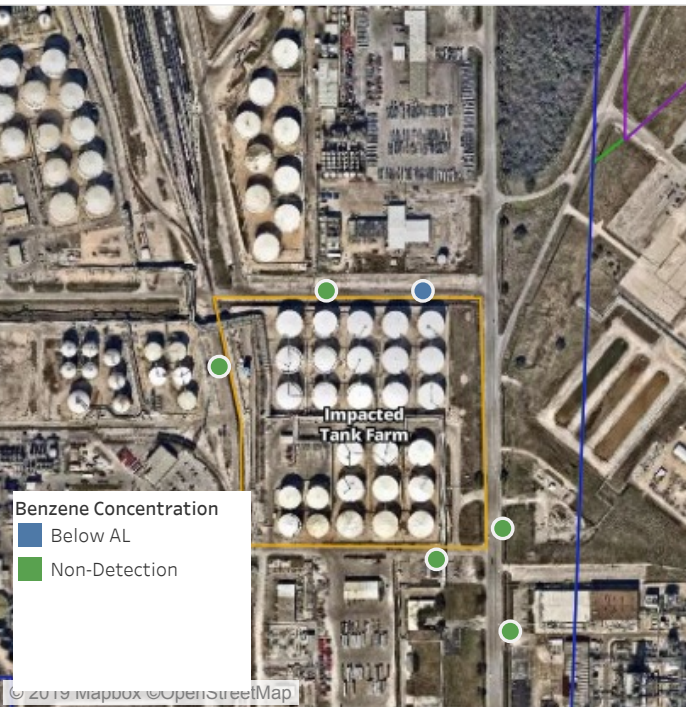


This data has been provided expeditiously to ITC and regulatory agencies for informational and/or operational purposes only. Data reported within this summary is preliminary in nature and has not undergone complete QA/QC (quality assurance/quality control) process. Until this complete QA/QC process is completed, the locations of each reading are approximate in nature and subject to further refinement. As some readings may represent non-brea..



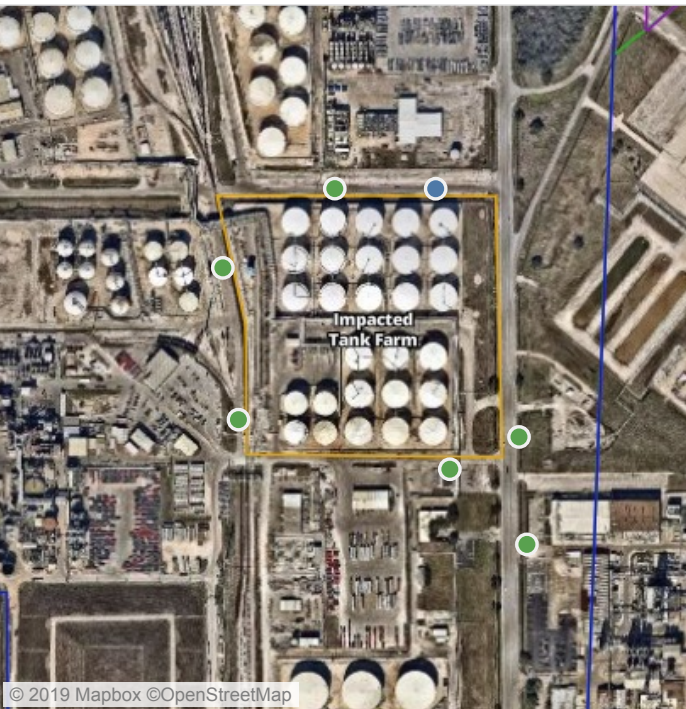
# Preliminary Hand- Held Air Monitoring Locations | ITC Deer Park Tank Fire

Reading Date  
7/10/2019 10:00:00 PM to 7/10/2019 11:00:00 PM



## Recent Benzene Detections

Location Category	Reading Date	Range of Detections
Division E	7/10/2019 22:06:23	0.05000 ppm



This data has been provided expeditiously to ITC and regulatory agencies for informational and/or operational purposes only. Data reported within this summary is preliminary in nature and has not undergone complete QA/QC (quality assurance/quality control) process. Until this complete QA/QC process is completed, the locations of each reading are approximate in nature and subject to further refinement. As some readings may represent non-brea..