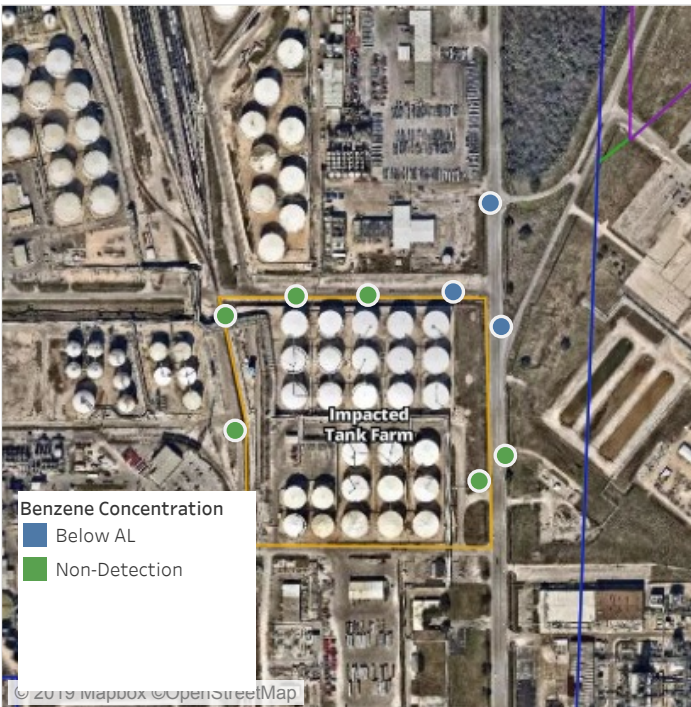


Preliminary Hand- Held Air Monitoring Locations | ITC Deer Park Tank Fire

Reading Date
7/10/2019 11:00:00 PM to 7/11/2019 12:00:00 AM



Recent Benzene Detections

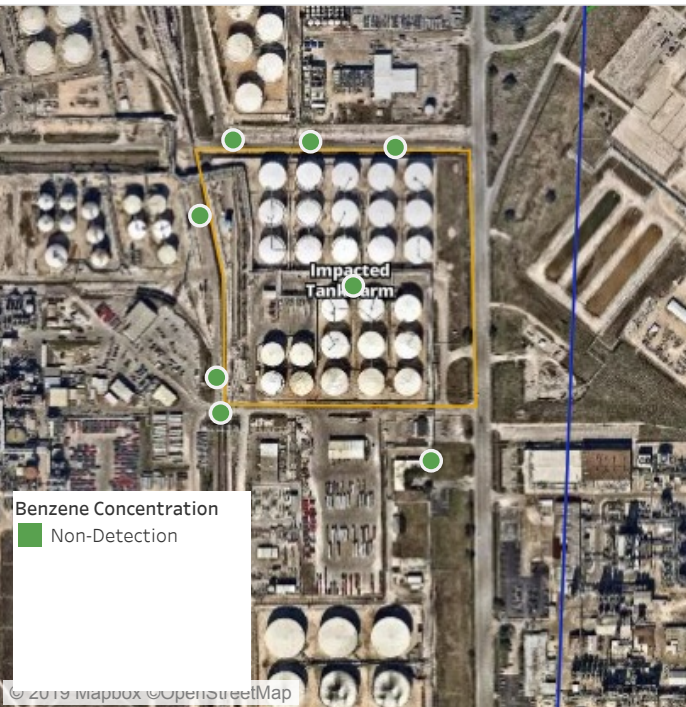
Location Category	Reading Date	Range of Detections
Division E	7/10/2019 23:33:02	0.04000 ppm
	7/10/2019 23:30:00	0.04000 ppm
	7/10/2019 23:45:00	0.02000 ppm



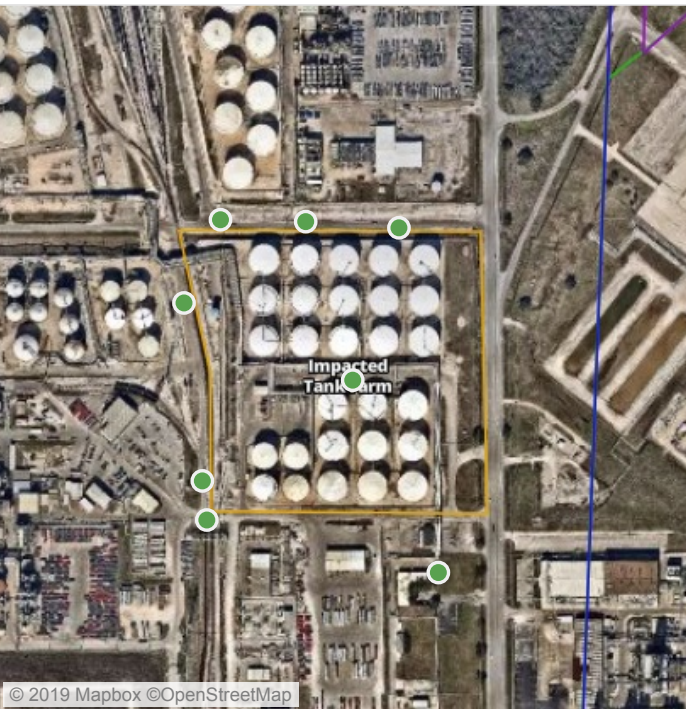
This data has been provided expeditiously to ITC and regulatory agencies for informational and/or operational purposes only. Data reported within this summary is preliminary in nature and has not undergone complete QA/QC (quality assurance/quality control) process. Until this complete QA/QC process is completed, the locations of each reading are approximate in nature and subject to further refinement. As some readings may represent non-brea..

Preliminary Hand- Held Air Monitoring Locations | ITC Deer Park Tank Fire

Reading Date
7/11/2019 12:00:00 AM to 7/11/2019 1:00:00 AM



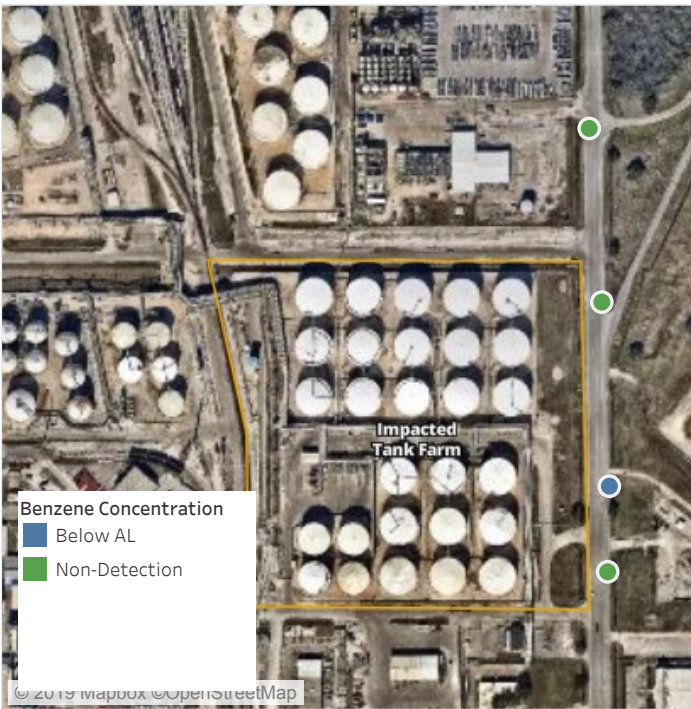
Recent Benzene Detections



This data has been provided expeditiously to ITC and regulatory agencies for informational and/or operational purposes only. Data reported within this summary is preliminary in nature and has not undergone complete QA/QC (quality assurance/quality control) process. Until this complete QA/QC process is completed, the locations of each reading are approximate in nature and subject to further refinement. As some readings may represent non-brea..

Preliminary Hand- Held Air Monitoring Locations | ITC Deer Park Tank Fire

Reading Date
7/11/2019 1:00:00 AM to 7/11/2019 2:00:00 AM



Recent Benzene Detections

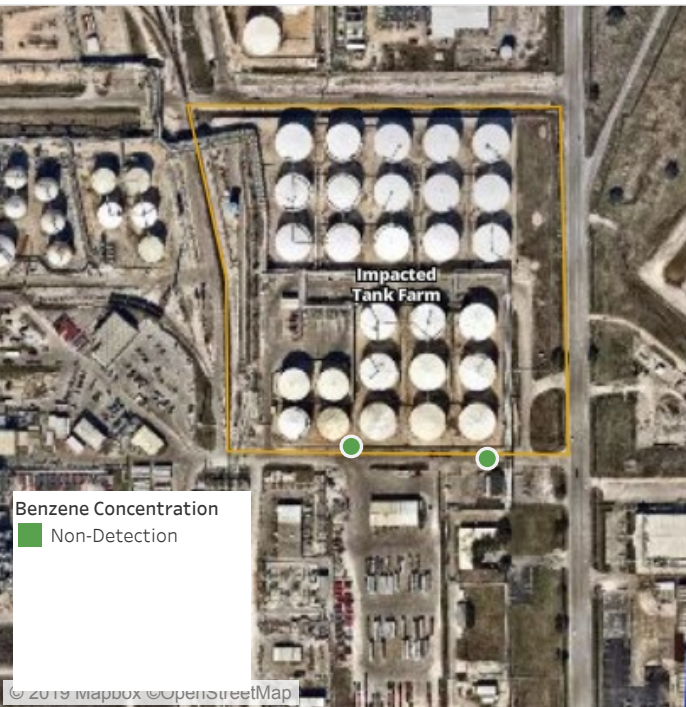
Location Category	Reading Date	Range of Detections
Division E	7/11/2019 01:20:00	0.09000 ppm



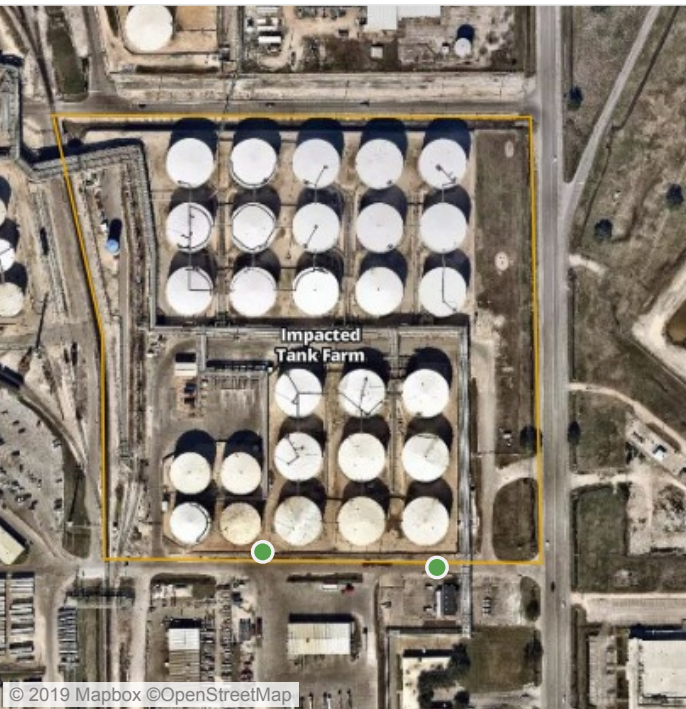
This data has been provided expeditiously to ITC and regulatory agencies for informational and/or operational purposes only. Data reported within this summary is preliminary in nature and has not undergone complete QA/QC (quality assurance/quality control) process. Until this complete QA/QC process is completed, the locations of each reading are approximate in nature and subject to further refinement. As some readings may represent non-brea..

Preliminary Hand- Held Air Monitoring Locations | ITC Deer Park Tank Fire

Reading Date
7/11/2019 2:00:00 AM to 7/11/2019 3:00:00 AM



Recent Benzene Detections



This data has been provided expeditiously to ITC and regulatory agencies for informational and/or operational purposes only. Data reported within this summary is preliminary in nature and has not undergone complete QA/QC (quality assurance/quality control) process. Until this complete QA/QC process is completed, the locations of each reading are approximate in nature and subject to further refinement. As some readings may represent non-brea..

Preliminary Hand- Held Air Monitoring Locations | ITC Deer Park Tank Fire

Reading Date
7/11/2019 3:00:00 AM to 7/11/2019 4:00:00 AM



Recent Benzene Detections

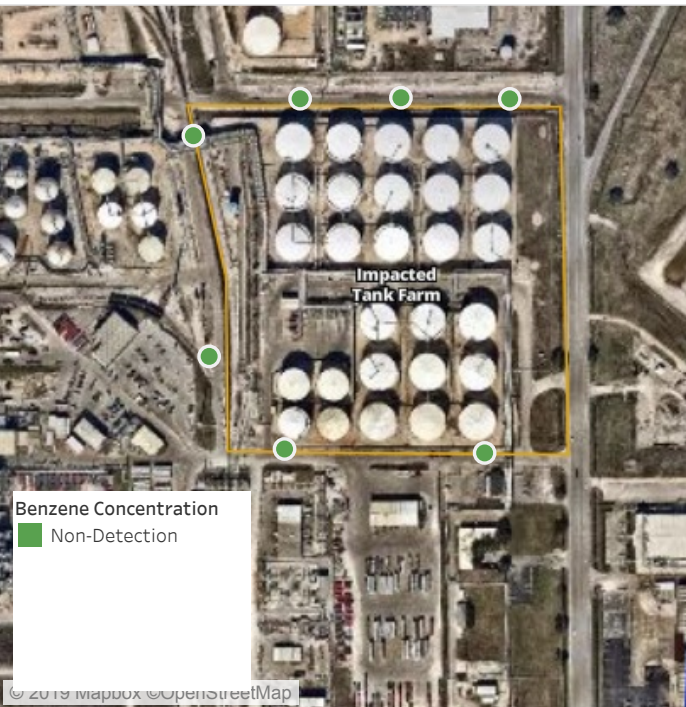
Location Category	Reading Date	Range of Detections
Division E	7/11/2019 03:55:00	0.05000 ppm



This data has been provided expeditiously to ITC and regulatory agencies for informational and/or operational purposes only. Data reported within this summary is preliminary in nature and has not undergone complete QA/QC (quality assurance/quality control) process. Until this complete QA/QC process is completed, the locations of each reading are approximate in nature and subject to further refinement. As some readings may represent non-brea..

Preliminary Hand- Held Air Monitoring Locations | ITC Deer Park Tank Fire

Reading Date
7/11/2019 4:00:00 AM to 7/11/2019 5:00:00 AM



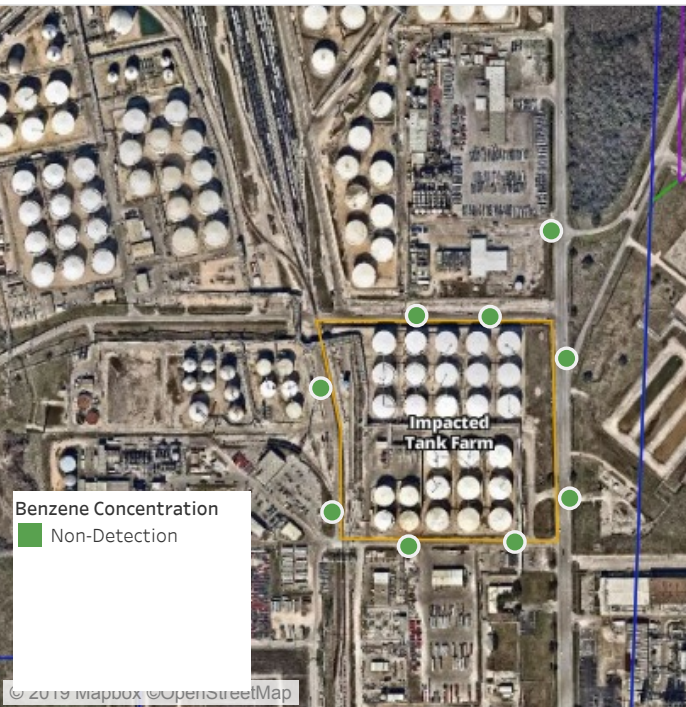
Recent Benzene Detections



This data has been provided expeditiously to ITC and regulatory agencies for informational and/or operational purposes only. Data reported within this summary is preliminary in nature and has not undergone complete QA/QC (quality assurance/quality control) process. Until this complete QA/QC process is completed, the locations of each reading are approximate in nature and subject to further refinement. As some readings may represent non-brea..

Preliminary Hand- Held Air Monitoring Locations | ITC Deer Park Tank Fire

Reading Date
7/11/2019 5:00:00 AM to 7/11/2019 6:00:00 AM



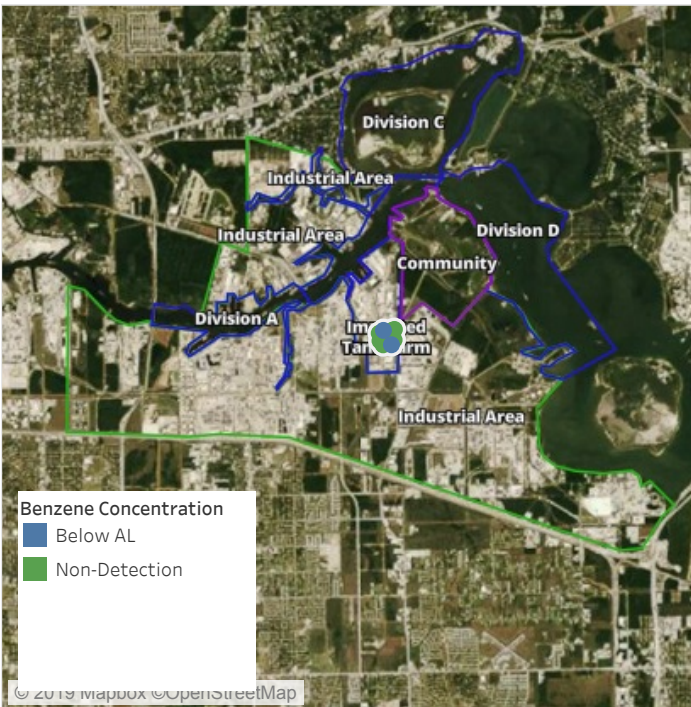
Recent Benzene Detections



This data has been provided expeditiously to ITC and regulatory agencies for informational and/or operational purposes only. Data reported within this summary is preliminary in nature and has not undergone complete QA/QC (quality assurance/quality control) process. Until this complete QA/QC process is completed, the locations of each reading are approximate in nature and subject to further refinement. As some readings may represent non-brea..

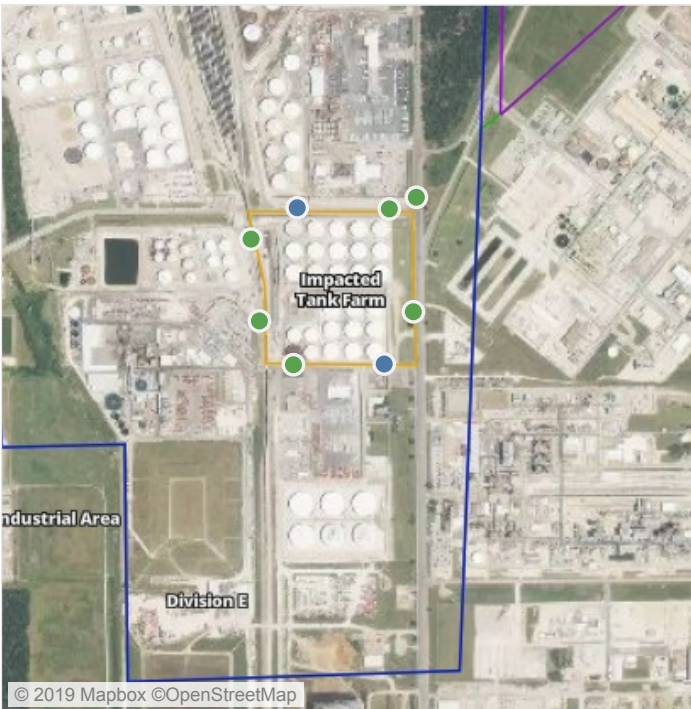
Preliminary Hand- Held Air Monitoring Locations | ITC Deer Park Tank Fire

Reading Date
7/11/2019 6:00:00 AM to 7/11/2019 7:00:00 AM



Recent Benzene Detections

Location Category	Reading Date	Range of Detections
Division E	7/11/2019 06:08:19	0.06000 ppm
	7/11/2019 06:23:07	0.05000 ppm



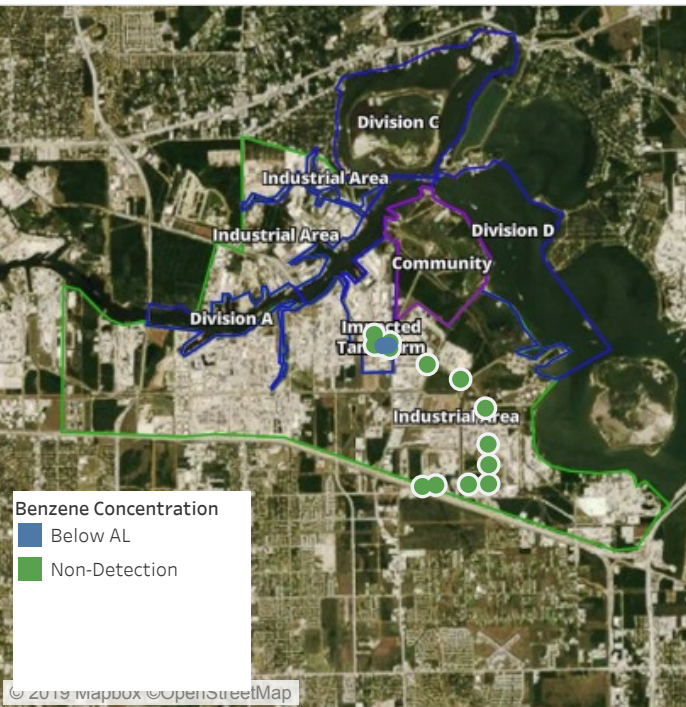
This data has been provided expeditiously to ITC and regulatory agencies for informational and/or operational purposes only. Data reported within this summary is preliminary in nature and has not undergone complete QA/QC (quality assurance/quality control) process. Until this complete QA/QC process is completed, the locations of each reading are approximate in nature and subject to further refinement. As some readings may represent non-brea..



Please Note: These updates display data from the 2nd 80's Fire site (Impacted Tank Farm), in the industrial areas surrounding the 2nd 80's Fire site (US Coast Guard Division E), within the Houston Ship Channel (US Coast Guard Divisions A-D), and in the industrial areas north and south of the Houston Ship Channel (Industrial Area). Real-time air monitoring data for the surrounding communities are communicated daily in a separate report.

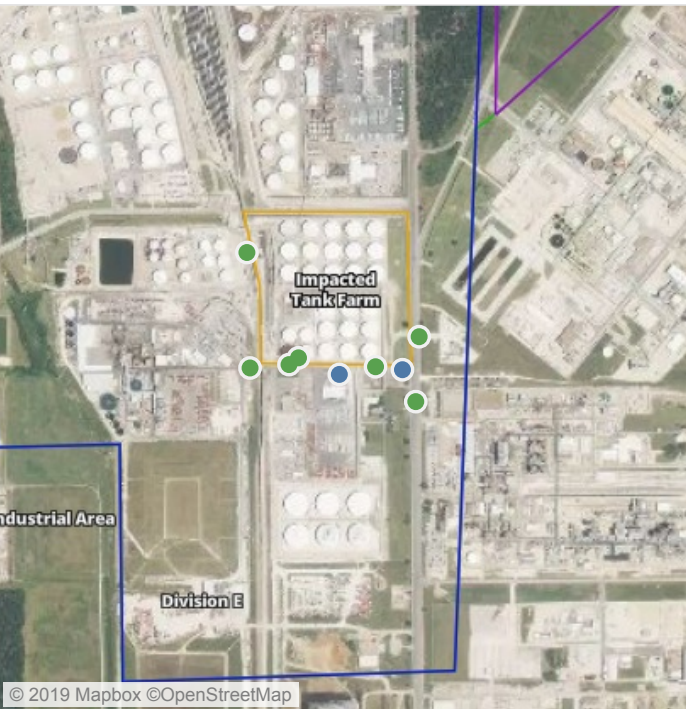
Preliminary Hand- Held Air Monitoring Locations | ITC Deer Park Tank Fire

Reading Date
7/11/2019 7:00:00 AM to 7/11/2019 8:00:00 AM



Recent Benzene Detections

Location Category	Reading Date	Range of Detections
Division E	7/11/2019 07:54:41	0.04000 ppm
	7/11/2019 07:57:24	0.05000 ppm



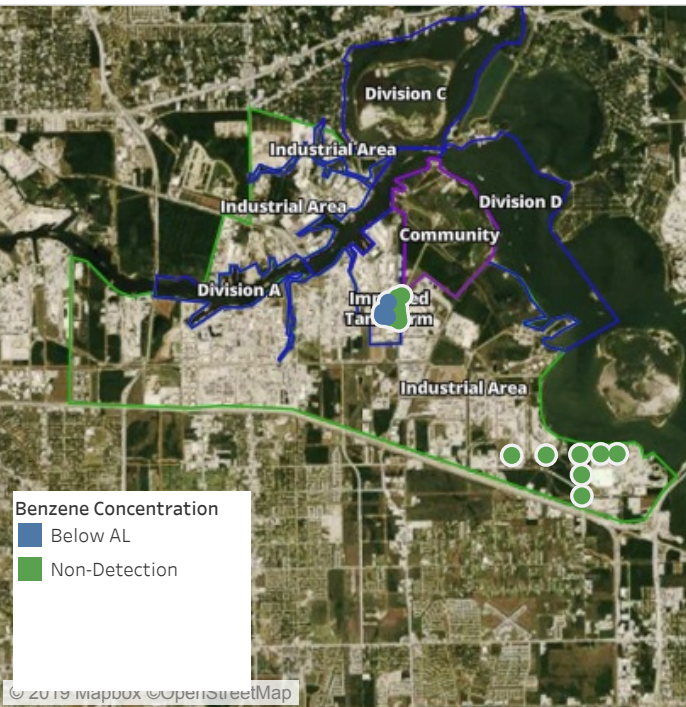
This data has been provided expeditiously to ITC and regulatory agencies for informational and/or operational purposes only. Data reported within this summary is preliminary in nature and has not undergone complete QA/QC (quality assurance/quality control) process. Until this complete QA/QC process is completed, the locations of each reading are approximate in nature and subject to further refinement. As some readings may represent non-brea..



Please Note: These updates display data from the 2nd 80's Fire site (Impacted Tank Farm), in the industrial areas surrounding the 2nd 80's Fire site (US Coast Guard Division E), within the Houston Ship Channel (US Coast Guard Divisions A-D), and in the industrial areas north and south of the Houston Ship Channel (Industrial Area). Real-time air monitoring data for the surrounding communities are communicated daily in a separate report.

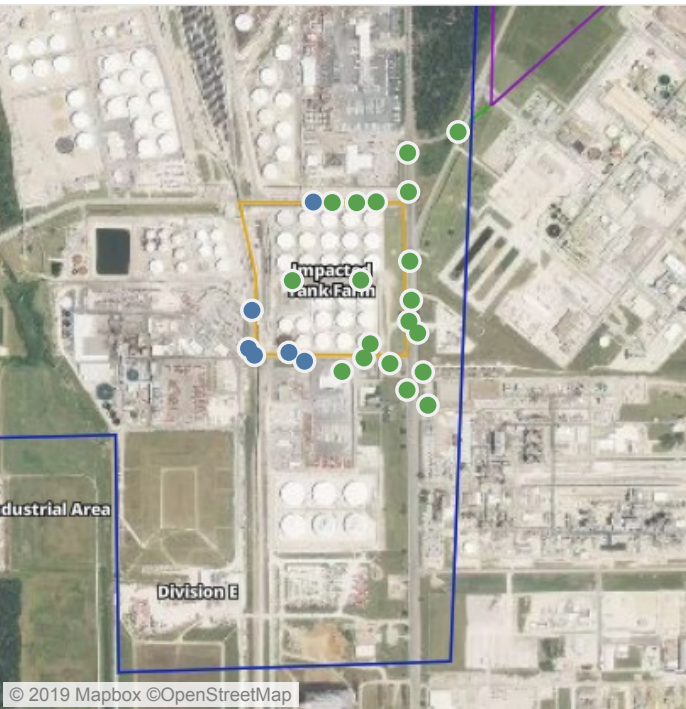
Preliminary Hand- Held Air Monitoring Locations | ITC Deer Park Tank Fire

Reading Date
7/11/2019 8:00:00 AM to 7/11/2019 9:00:00 AM



Recent Benzene Detections

Location Category	Reading Date	Range of Detections
Division E	7/11/2019 08:02:23	0.03000 ppm
	7/11/2019 08:05:52	0.03000 ppm
	7/11/2019 08:25:17	0.03000 ppm
	7/11/2019 08:27:23	0.02000 ppm
	7/11/2019 08:29:23	0.03000 ppm
	7/11/2019 08:54:11	0.02000 ppm



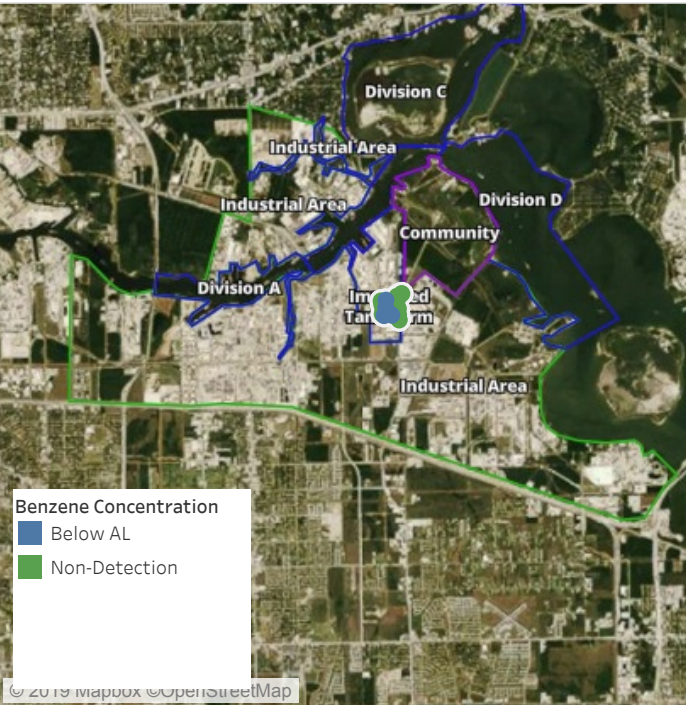
This data has been provided expeditiously to ITC and regulatory agencies for informational and/or operational purposes only. Data reported within this summary is preliminary in nature and has not undergone complete QA/QC (quality assurance/quality control) process. Until this complete QA/QC process is completed, the locations of each reading are approximate in nature and subject to further refinement. As some readings may represent non-brea..



Please Note: These updates display data from the 2nd 80's Fire site (Impacted Tank Farm), in the industrial areas surrounding the 2nd 80's Fire site (US Coast Guard Division E), within the Houston Ship Channel (US Coast Guard Divisions A-D), and in the industrial areas north and south of the Houston Ship Channel (Industrial Area). Real-time air monitoring data for the surrounding communities are communicated daily in a separate report.

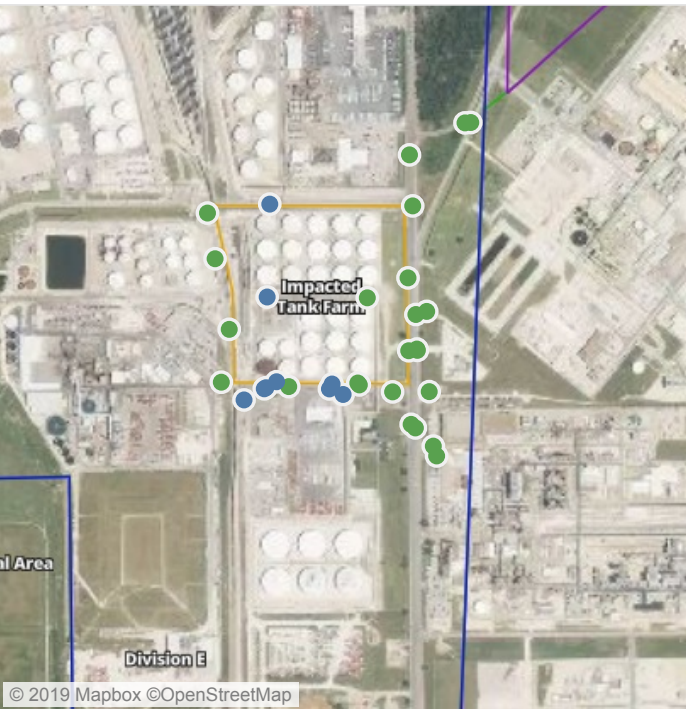
Preliminary Hand- Held Air Monitoring Locations | ITC Deer Park Tank Fire

Reading Date
7/11/2019 9:00:00 AM to 7/11/2019 10:00:00 AM



Recent Benzene Detections

Location Category	Reading Date	Range of Detections
Division E	7/11/2019 09:03:22	0.0200 ppm
	7/11/2019 09:07:34	0.0600 ppm
	7/11/2019 09:01:32	0.0200 ppm
	7/11/2019 09:36:30	0.0400 ppm
	7/11/2019 09:39:02	0.0200 ppm
	7/11/2019 09:43:07	0.1700 ppm
	7/11/2019 09:41:05	0.0300 ppm
	7/11/2019 09:45:03	0.1800 ppm
Impacted Tank Farm	7/11/2019 09:34:52	0.0200 ppm



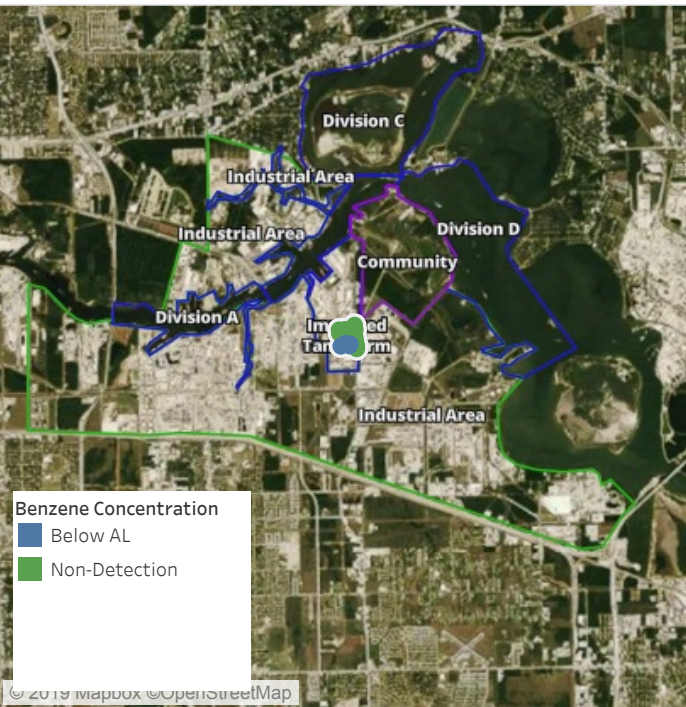
This data has been provided expeditiously to ITC and regulatory agencies for informational and/or operational purposes only. Data reported within this summary is preliminary in nature and has not undergone complete QA/QC (quality assurance/quality control) process. Until this complete QA/QC process is completed, the locations of each reading are approximate in nature and subject to further refinement. As some readings may represent non-brea..



Please Note: These updates display data from the 2nd 80's Fire site (Impacted Tank Farm), in the industrial areas surrounding the 2nd 80's Fire site (US Coast Guard Division E), within the Houston Ship Channel (US Coast Guard Divisions A-D), and in the industrial areas north and south of the Houston Ship Channel (Industrial Area). Real-time air monitoring data for the surrounding communities are communicated daily in a separate report.

Preliminary Hand- Held Air Monitoring Locations | ITC Deer Park Tank Fire

Reading Date
7/11/2019 10:00:00 AM to 7/11/2019 11:00:00 AM



Recent Benzene Detections

Location Category	Reading Date	Range of Detections
Division E	7/11/2019 10:31:52	0.0200 ppm
	7/11/2019 10:38:46	0.2100 ppm
	7/11/2019 10:34:07	0.0300 ppm
	7/11/2019 10:36:50	0.1200 ppm



This data has been provided expeditiously to ITC and regulatory agencies for informational and/or operational purposes only. Data reported within this summary is preliminary in nature and has not undergone complete QA/QC (quality assurance/quality control) process. Until this complete QA/QC process is completed, the locations of each reading are approximate in nature and subject to further refinement. As some readings may represent non-brea..



Please Note: These updates display data from the 2nd 80's Fire site (Impacted Tank Farm), in the industrial areas surrounding the 2nd 80's Fire site (US Coast Guard Division E), within the Houston Ship Channel (US Coast Guard Divisions A-D), and in the industrial areas north and south of the Houston Ship Channel (Industrial Area). Real-time air monitoring data for the surrounding communities are communicated daily in a separate report.

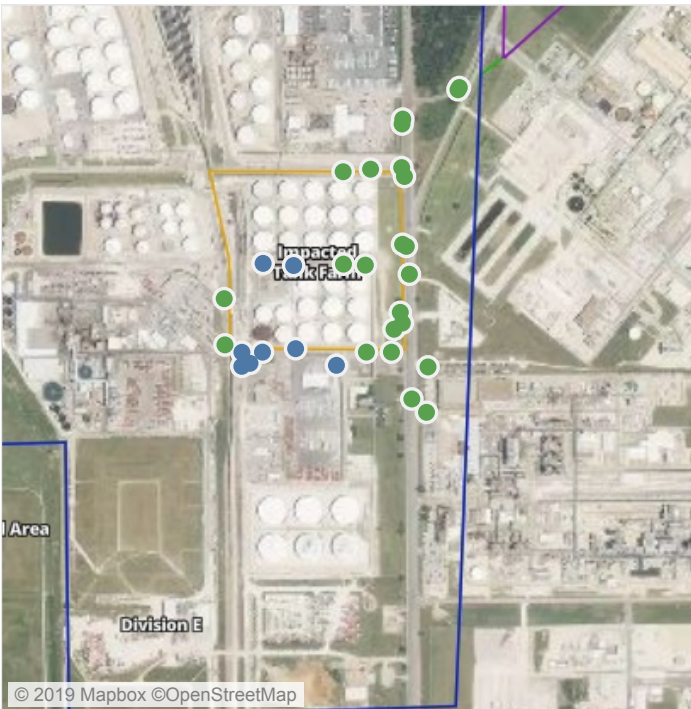
Preliminary Hand- Held Air Monitoring Locations | ITC Deer Park Tank Fire

Reading Date
7/11/2019 11:00:00 AM to 7/11/2019 12:00:00 PM



Recent Benzene Detections

Location Category	Reading Date	Range of Detections
Division E	7/11/2019 11:12:59	0.1400 ppm
	7/11/2019 11:20:18	0.1600 ppm
	7/11/2019 11:17:55	0.1200 ppm
	7/11/2019 11:15:42	0.0600 ppm
	7/11/2019 11:54:43	0.1600 ppm
	7/11/2019 11:56:46	0.1100 ppm
Impacted Tank Farm	7/11/2019 11:13:45	0.0300 ppm
	7/11/2019 11:20:27	0.0400 ppm



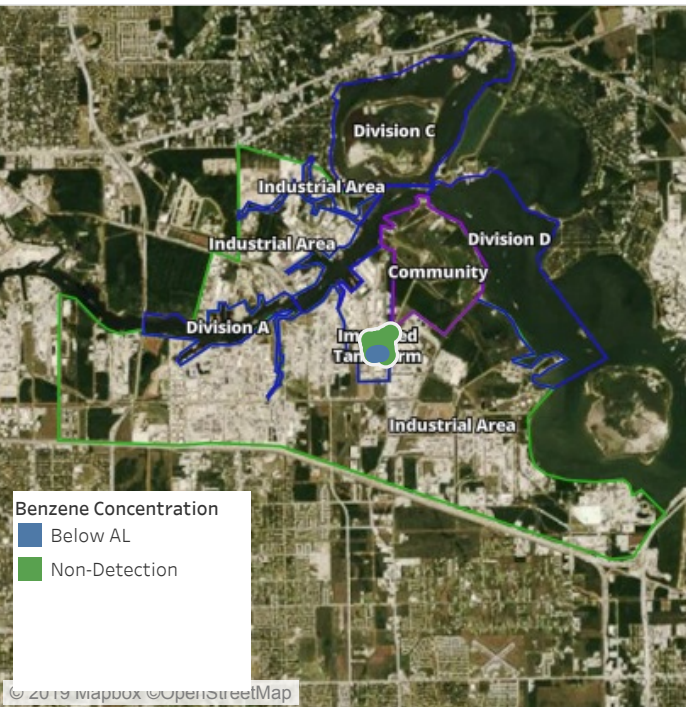
This data has been provided expeditiously to ITC and regulatory agencies for informational and/or operational purposes only. Data reported within this summary is preliminary in nature and has not undergone complete QA/QC (quality assurance/quality control) process. Until this complete QA/QC process is completed, the locations of each reading are approximate in nature and subject to further refinement. As some readings may represent non-brea..



Please Note: These updates display data from the 2nd 80's Fire site (Impacted Tank Farm), in the industrial areas surrounding the 2nd 80's Fire site (US Coast Guard Division E), within the Houston Ship Channel (US Coast Guard Divisions A-D), and in the industrial areas north and south of the Houston Ship Channel (Industrial Area). Real-time air monitoring data for the surrounding communities are communicated daily in a separate report.

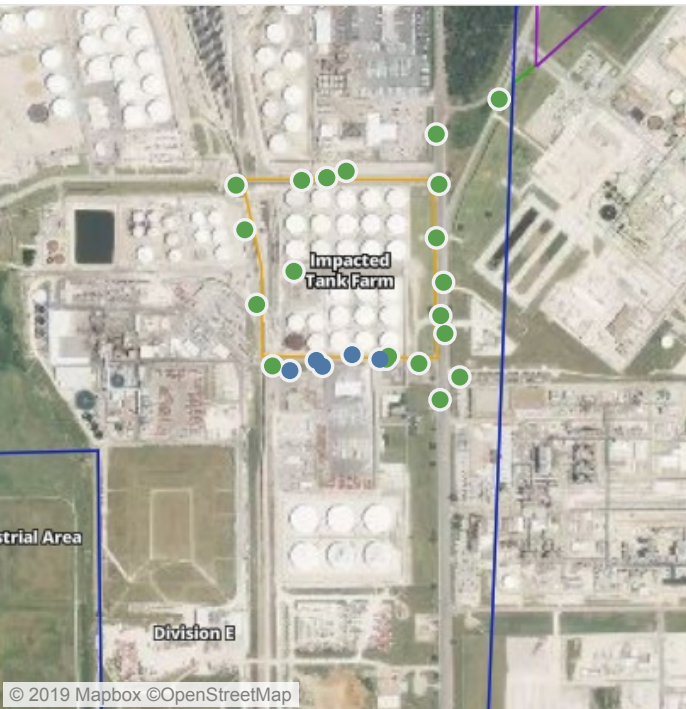
Preliminary Hand- Held Air Monitoring Locations | ITC Deer Park Tank Fire

Reading Date
7/11/2019 12:00:00 PM to 7/11/2019 1:00:00 PM



Recent Benzene Detections

Location Category	Reading Date	Range of Detections
Division E	7/11/2019 12:00:03	0.0200 ppm
	7/11/2019 12:40:53	0.2000 ppm
	7/11/2019 12:48:28	0.0900 ppm
	7/11/2019 12:55:20	0.0400 ppm
	7/11/2019 12:53:22	0.1500 ppm



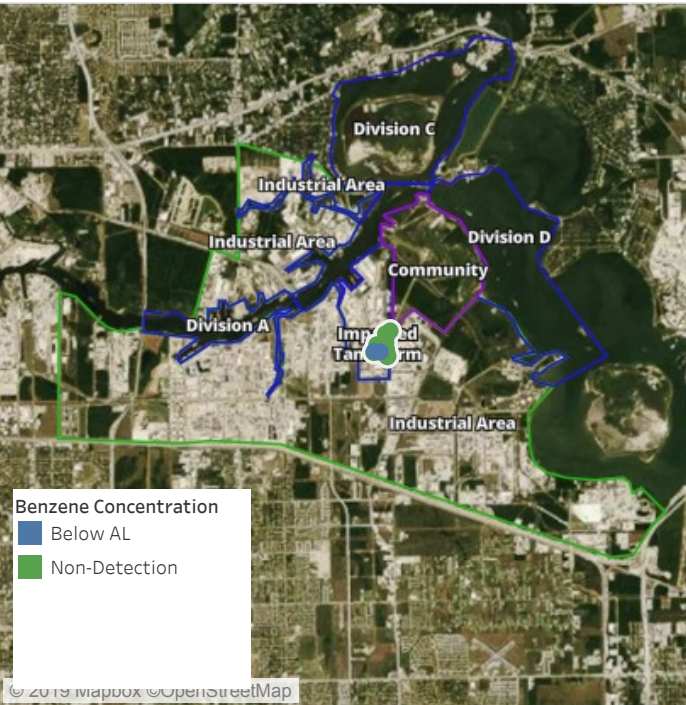
This data has been provided expeditiously to ITC and regulatory agencies for informational and/or operational purposes only. Data reported within this summary is preliminary in nature and has not undergone complete QA/QC (quality assurance/quality control) process. Until this complete QA/QC process is completed, the locations of each reading are approximate in nature and subject to further refinement. As some readings may represent non-brea..



Please Note: These updates display data from the 2nd 80's Fire site (Impacted Tank Farm), in the industrial areas surrounding the 2nd 80's Fire site (US Coast Guard Division E), within the Houston Ship Channel (US Coast Guard Divisions A-D), and in the industrial areas north and south of the Houston Ship Channel (Industrial Area). Real-time air monitoring data for the surrounding communities are communicated daily in a separate report.

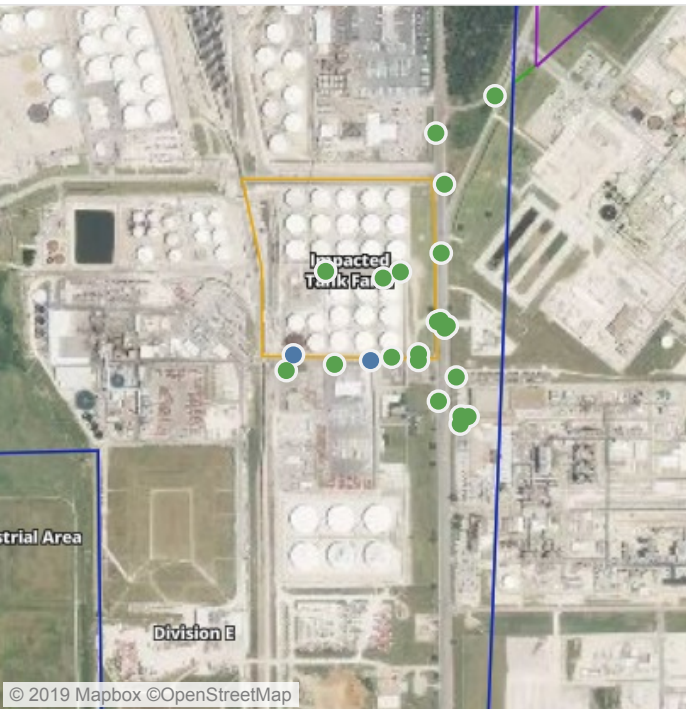
Preliminary Hand- Held Air Monitoring Locations | ITC Deer Park Tank Fire

Reading Date
7/11/2019 1:00:00 PM to 7/11/2019 2:00:00 PM



Recent Benzene Detections

Location Category	Reading Date	Range of Detections
Division E	7/11/2019 13:36:03	0.1700 ppm
	7/11/2019 13:46:58	0.0500 ppm



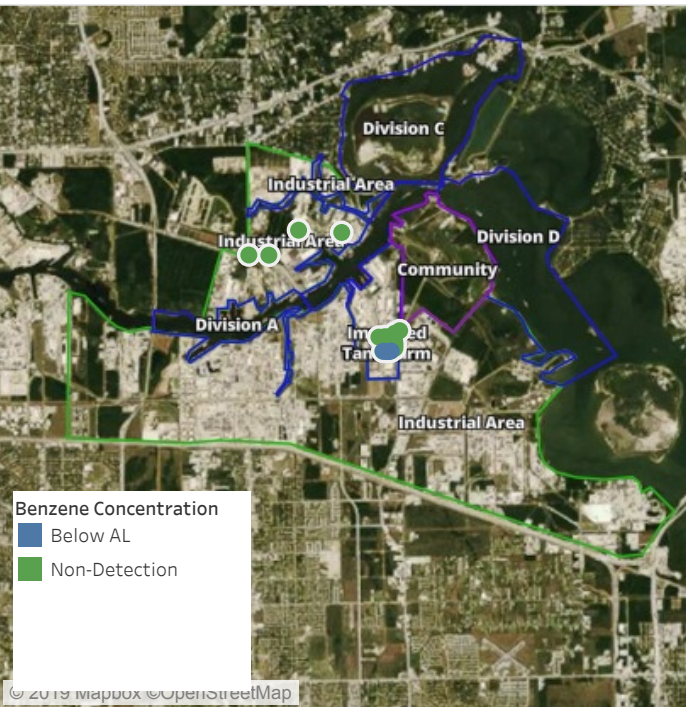
This data has been provided expeditiously to ITC and regulatory agencies for informational and/or operational purposes only. Data reported within this summary is preliminary in nature and has not undergone complete QA/QC (quality assurance/quality control) process. Until this complete QA/QC process is completed, the locations of each reading are approximate in nature and subject to further refinement. As some readings may represent non-brea..



Please Note: These updates display data from the 2nd 80's Fire site (Impacted Tank Farm), in the industrial areas surrounding the 2nd 80's Fire site (US Coast Guard Division E), within the Houston Ship Channel (US Coast Guard Divisions A-D), and in the industrial areas north and south of the Houston Ship Channel (Industrial Area). Real-time air monitoring data for the surrounding communities are communicated daily in a separate report.

Preliminary Hand- Held Air Monitoring Locations | ITC Deer Park Tank Fire

Reading Date
7/11/2019 2:00:00 PM to 7/11/2019 3:00:00 PM



Recent Benzene Detections

Location Category	Reading Date	Range of Detections
Division E	7/11/2019 14:19:40	0.0300 ppm
	7/11/2019 14:21:46	0.2200 ppm
	7/11/2019 14:15:01	0.0400 ppm
	7/11/2019 14:23:58	0.0500 ppm



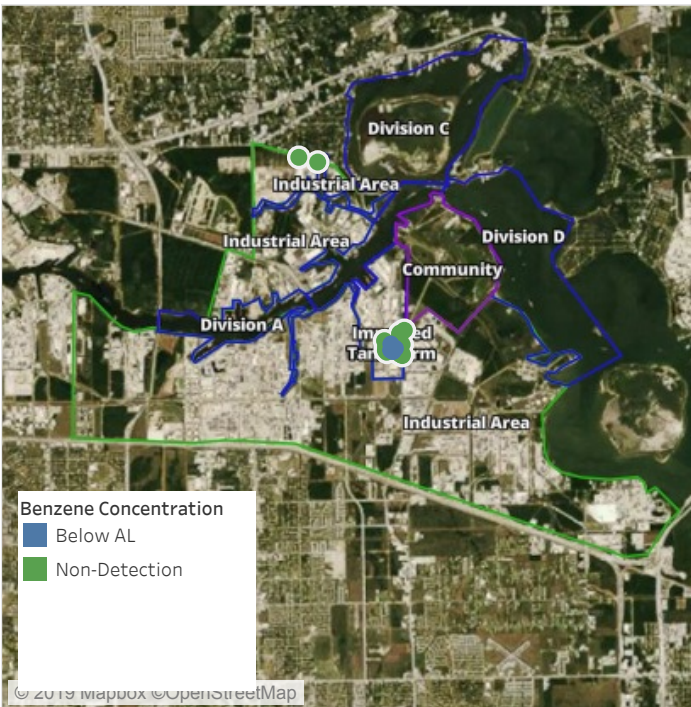
This data has been provided expeditiously to ITC and regulatory agencies for informational and/or operational purposes only. Data reported within this summary is preliminary in nature and has not undergone complete QA/QC (quality assurance/quality control) process. Until this complete QA/QC process is completed, the locations of each reading are approximate in nature and subject to further refinement. As some readings may represent non-brea..



Please Note: These updates display data from the 2nd 80's Fire site (Impacted Tank Farm), in the industrial areas surrounding the 2nd 80's Fire site (US Coast Guard Division E), within the Houston Ship Channel (US Coast Guard Divisions A-D), and in the industrial areas north and south of the Houston Ship Channel (Industrial Area). Real-time air monitoring data for the surrounding communities are communicated daily in a separate report.

Preliminary Hand- Held Air Monitoring Locations | ITC Deer Park Tank Fire

Reading Date
7/11/2019 3:00:00 PM to 7/11/2019 4:00:00 PM



Recent Benzene Detections

Location Category	Reading Date	Range of Detections
Division E	7/11/2019 15:20:20	0.2400 ppm
	7/11/2019 15:14:43	0.0800 ppm
	7/11/2019 15:22:28	0.0900 ppm
	7/11/2019 15:53:59	0.0600 ppm
Impacted Tank Farm	7/11/2019 15:50:48	0.0300 ppm



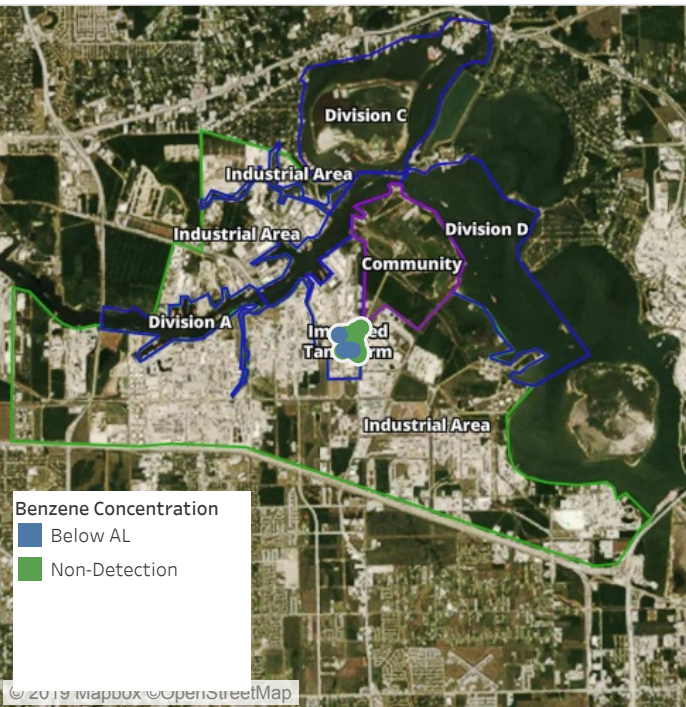
This data has been provided expeditiously to ITC and regulatory agencies for informational and/or operational purposes only. Data reported within this summary is preliminary in nature and has not undergone complete QA/QC (quality assurance/quality control) process. Until this complete QA/QC process is completed, the locations of each reading are approximate in nature and subject to further refinement. As some readings may represent non-brea..



Please Note: These updates display data from the 2nd 80's Fire site (Impacted Tank Farm), in the industrial areas surrounding the 2nd 80's Fire site (US Coast Guard Division E), within the Houston Ship Channel (US Coast Guard Divisions A-D), and in the industrial areas north and south of the Houston Ship Channel (Industrial Area). Real-time air monitoring data for the surrounding communities are communicated daily in a separate report.

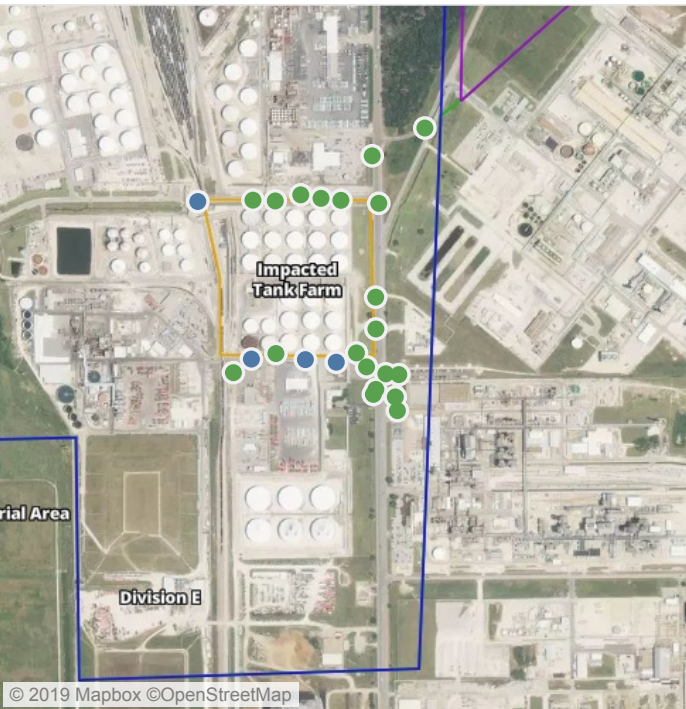
Preliminary Hand- Held Air Monitoring Locations | ITC Deer Park Tank Fire

Reading Date
7/11/2019 4:00:00 PM to 7/11/2019 5:00:00 PM



Recent Benzene Detections

Location Category	Reading Date	Range of Detections
Division E	7/11/2019 16:49:52	0.03000 ppm
	7/11/2019 16:47:42	0.02000 ppm
	7/11/2019 16:38:10	0.07000 ppm
	7/11/2019 16:59:54	0.03000 ppm



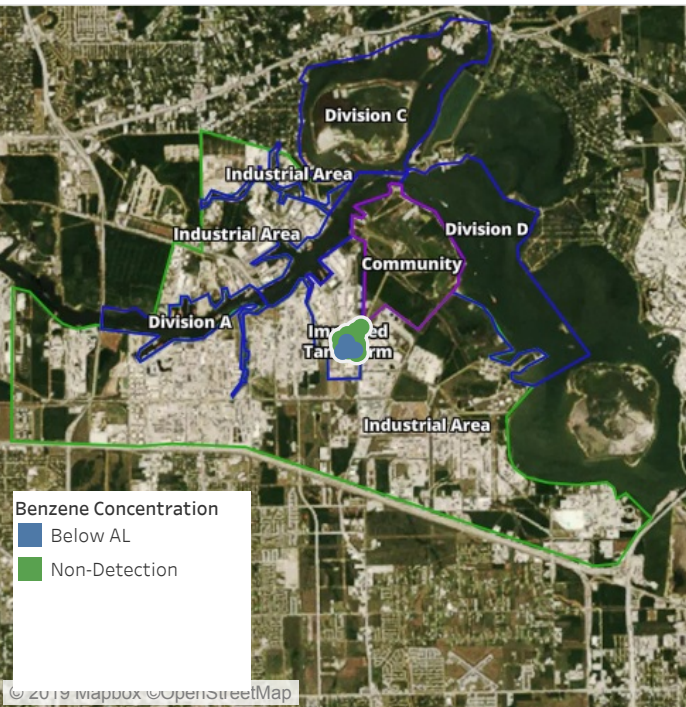
This data has been provided expeditiously to ITC and regulatory agencies for informational and/or operational purposes only. Data reported within this summary is preliminary in nature and has not undergone complete QA/QC (quality assurance/quality control) process. Until this complete QA/QC process is completed, the locations of each reading are approximate in nature and subject to further refinement. As some readings may represent non-brea..



Please Note: These updates display data from the 2nd 80's Fire site (Impacted Tank Farm), in the industrial areas surrounding the 2nd 80's Fire site (US Coast Guard Division E), within the Houston Ship Channel (US Coast Guard Divisions A-D), and in the industrial areas north and south of the Houston Ship Channel (Industrial Area). Real-time air monitoring data for the surrounding communities are communicated daily in a separate report.

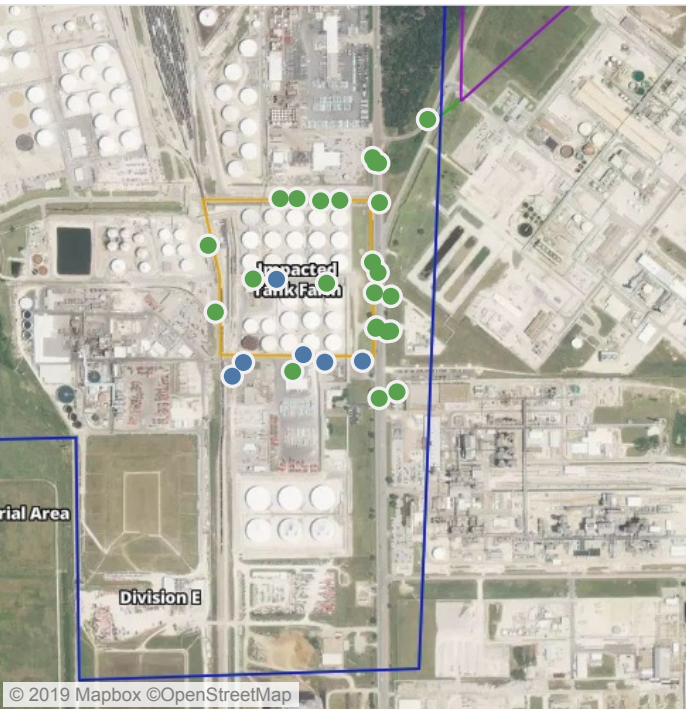
Preliminary Hand- Held Air Monitoring Locations | ITC Deer Park Tank Fire

Reading Date
7/11/2019 5:00:00 PM to 7/11/2019 6:00:00 PM



Recent Benzene Detections

Location Category	Reading Date	Range of Detections
Division E	7/11/2019 17:24:02	0.02000 ppm
	7/11/2019 17:19:09	0.02000 ppm
	7/11/2019 17:28:01	0.02000 ppm
	7/11/2019 17:32:07	0.03000 ppm
	7/11/2019 17:33:40	0.08000 ppm
Impacted Tank Farm	7/11/2019 17:25:10	0.02000 ppm



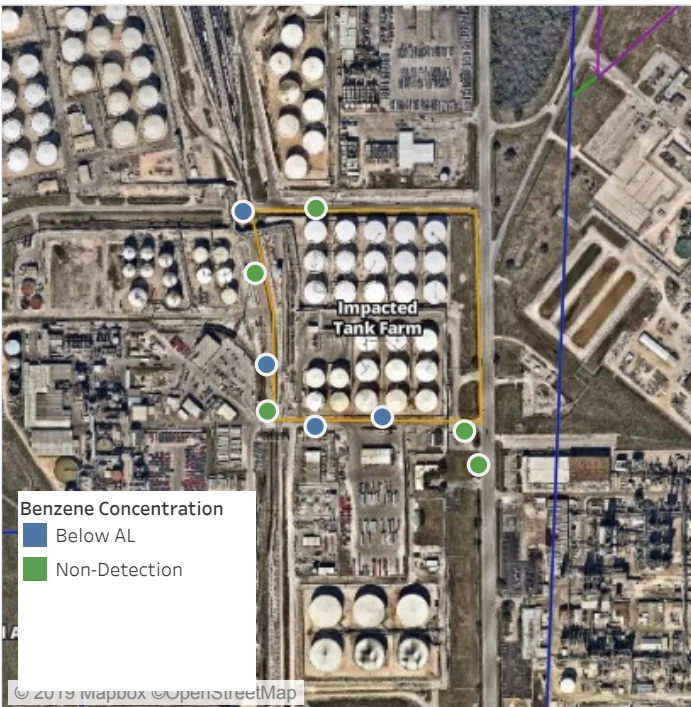
This data has been provided expeditiously to ITC and regulatory agencies for informational and/or operational purposes only. Data reported within this summary is preliminary in nature and has not undergone complete QA/QC (quality assurance/quality control) process. Until this complete QA/QC process is completed, the locations of each reading are approximate in nature and subject to further refinement. As some readings may represent non-brea..



Please Note: These updates display data from the 2nd 80's Fire site (Impacted Tank Farm), in the industrial areas surrounding the 2nd 80's Fire site (US Coast Guard Division E), within the Houston Ship Channel (US Coast Guard Divisions A-D), and in the industrial areas north and south of the Houston Ship Channel (Industrial Area). Real-time air monitoring data for the surrounding communities are communicated daily in a separate report.

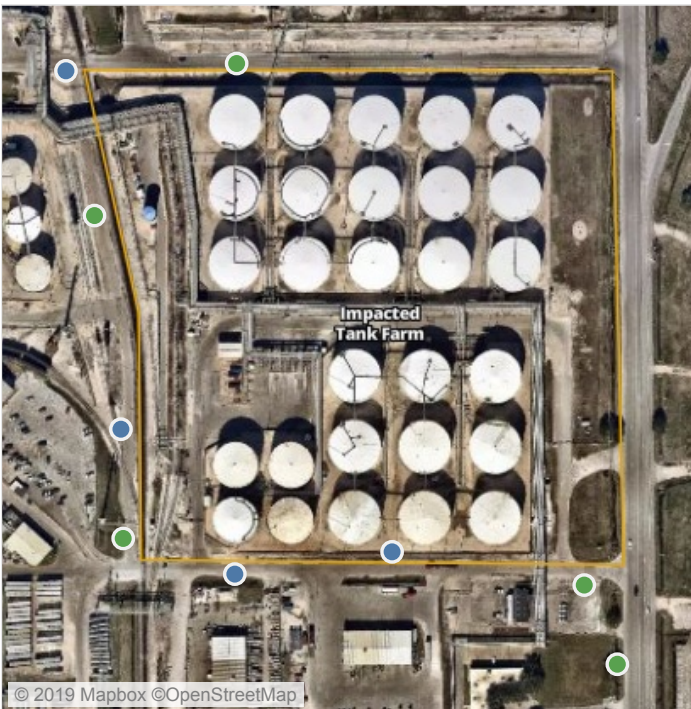
Preliminary Hand- Held Air Monitoring Locations | ITC Deer Park Tank Fire

Reading Date
7/11/2019 6:00:00 PM to 7/11/2019 7:00:00 PM



Recent Benzene Detections

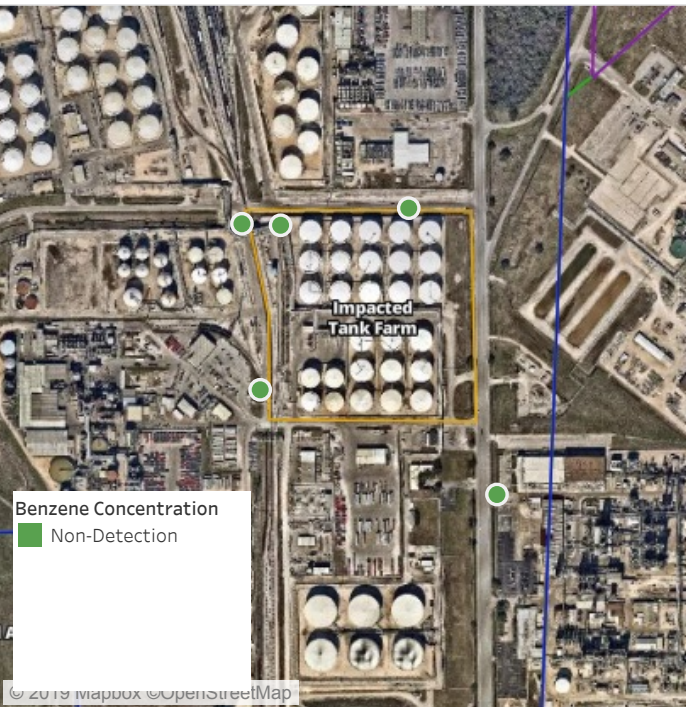
Location Category	Reading Date	Range of Detections
Division E	7/11/2019 18:05:35	0.03000 ppm
	7/11/2019 18:00:48	0.07000 ppm
	7/11/2019 18:03:20	0.06000 ppm
	7/11/2019 18:15:49	0.02000 ppm



This data has been provided expeditiously to ITC and regulatory agencies for informational and/or operational purposes only. Data reported within this summary is preliminary in nature and has not undergone complete QA/QC (quality assurance/quality control) process. Until this complete QA/QC process is completed, the locations of each reading are approximate in nature and subject to further refinement. As some readings may represent non-brea..

Preliminary Hand- Held Air Monitoring Locations | ITC Deer Park Tank Fire

Reading Date
7/11/2019 7:00:00 PM to 7/11/2019 8:00:00 PM



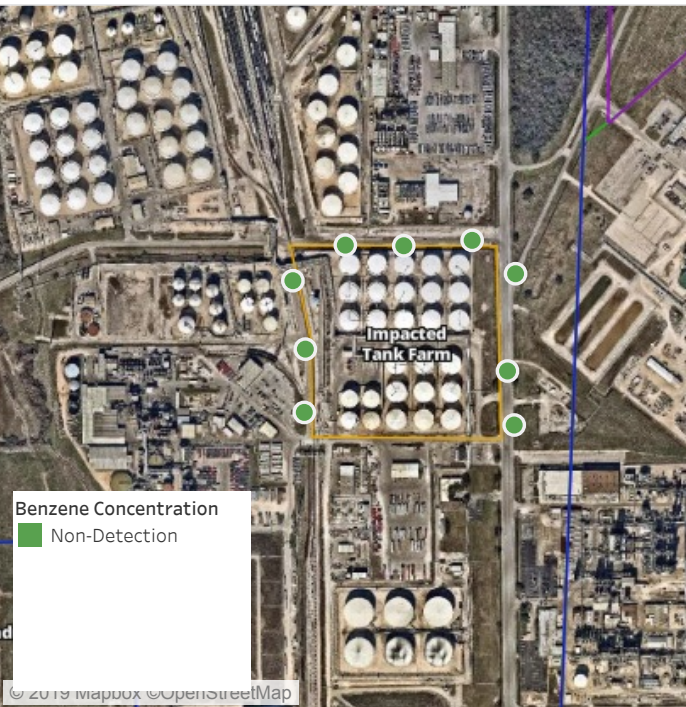
Recent Benzene Detections



This data has been provided expeditiously to ITC and regulatory agencies for informational and/or operational purposes only. Data reported within this summary is preliminary in nature and has not undergone complete QA/QC (quality assurance/quality control) process. Until this complete QA/QC process is completed, the locations of each reading are approximate in nature and subject to further refinement. As some readings may represent non-brea..

Preliminary Hand- Held Air Monitoring Locations | ITC Deer Park Tank Fire

Reading Date
7/11/2019 8:00:00 PM to 7/11/2019 9:00:00 PM



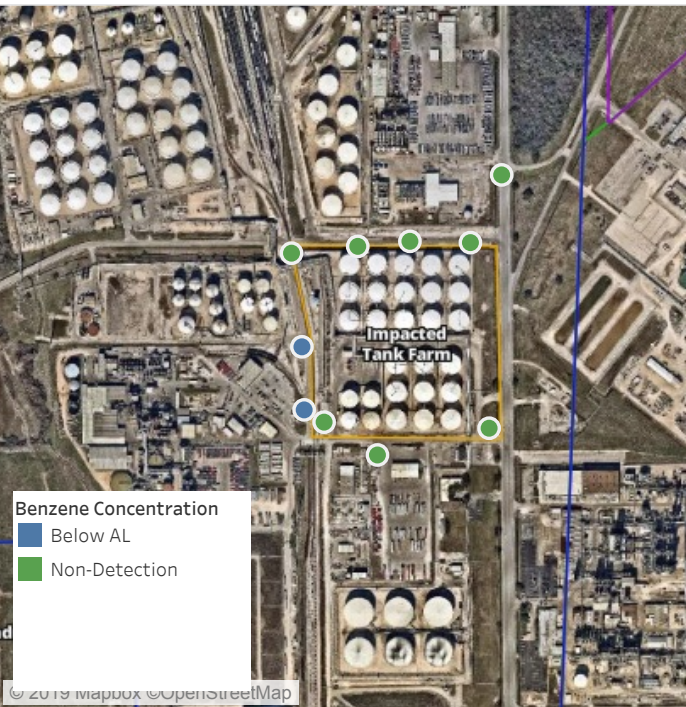
Recent Benzene Detections



This data has been provided expeditiously to ITC and regulatory agencies for informational and/or operational purposes only. Data reported within this summary is preliminary in nature and has not undergone complete QA/QC (quality assurance/quality control) process. Until this complete QA/QC process is completed, the locations of each reading are approximate in nature and subject to further refinement. As some readings may represent non-brea..

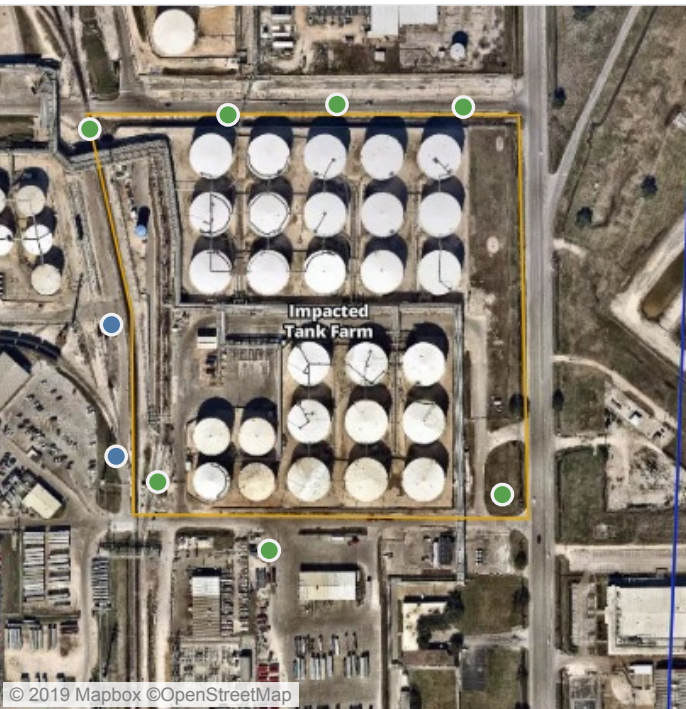
Preliminary Hand- Held Air Monitoring Locations | ITC Deer Park Tank Fire

Reading Date
7/11/2019 9:00:00 PM to 7/11/2019 10:00:00 PM



Recent Benzene Detections

Location Category	Reading Date	Range of Detections
Division E	7/11/2019 21:08:17	0.04000 ppm
	7/11/2019 21:04:40	0.03000 ppm

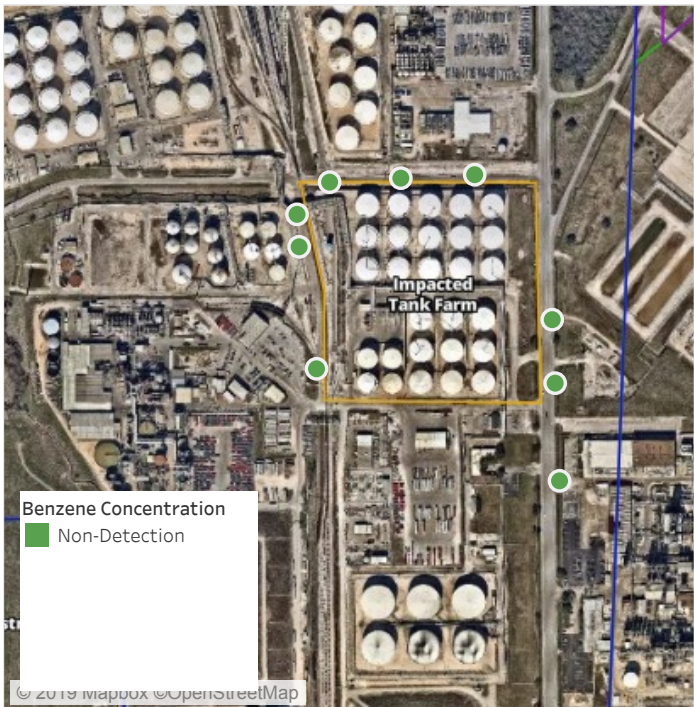


This data has been provided expeditiously to ITC and regulatory agencies for informational and/or operational purposes only. Data reported within this summary is preliminary in nature and has not undergone complete QA/QC (quality assurance/quality control) process. Until this complete QA/QC process is completed, the locations of each reading are approximate in nature and subject to further refinement. As some readings may represent non-brea..

Preliminary Hand- Held Air Monitoring Locations | ITC Deer Park Tank Fire

Reading Date

7/11/2019 10:00:00 PM to 7/11/2019 11:00:00 PM



Recent Benzene Detections



This data has been provided expeditiously to ITC and regulatory agencies for informational and/or operational purposes only. Data reported within this summary is preliminary in nature and has not undergone complete QA/QC (quality assurance/quality control) process. Until this complete QA/QC process is completed, the locations of each reading are approximate in nature and subject to further refinement. As some readings may represent non-brea..