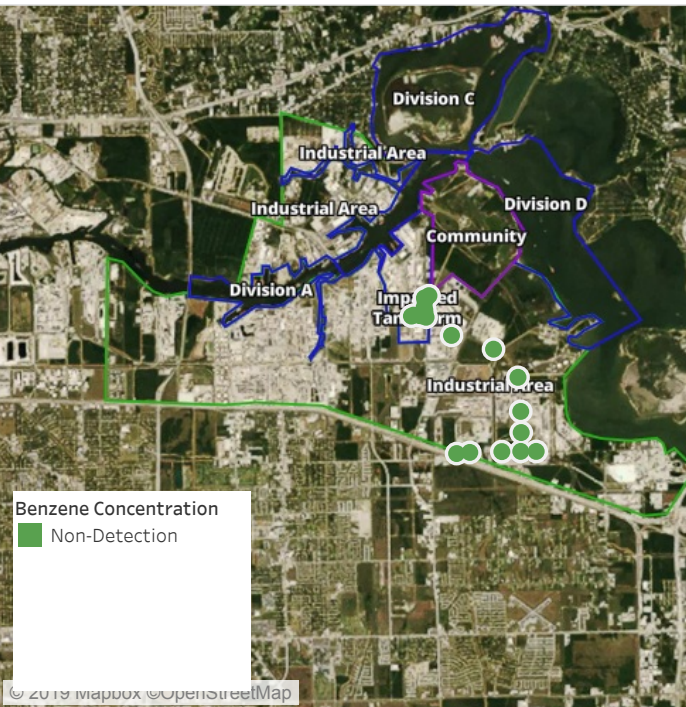


Preliminary Hand- Held Air Monitoring Locations | ITC Deer Park Tank Fire

Reading Date
7/21/2019 7:00:00 AM to 7/21/2019 8:00:00 AM



Recent Benzene Detections



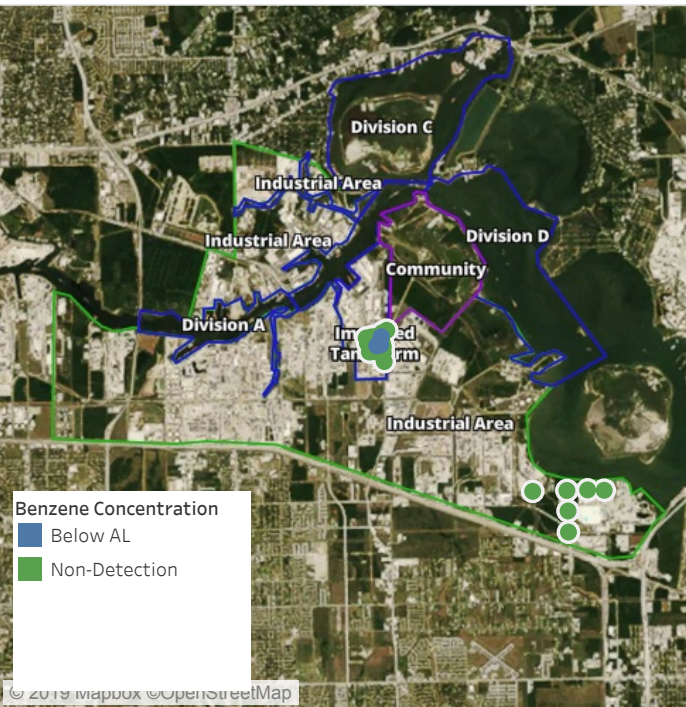
This data has been provided expeditiously to ITC and regulatory agencies for informational and/or operational purposes only. Data reported within this summary is preliminary in nature and has not undergone complete QA/QC (quality assurance/quality control) process. Until this complete QA/QC process is completed, the locations of each reading are approximate in nature and subject to further refinement. As some readings may represent non-brea..



Please Note: These updates display data from the 2nd 80's Fire site (Impacted Tank Farm), in the industrial areas surrounding the 2nd 80's Fire site (US Coast Guard Division E), within the Houston Ship Channel (US Coast Guard Divisions A-D), and in the industrial areas north and south of the Houston Ship Channel (Industrial Area). Real-time air monitoring data for the surrounding communities are communicated daily in a separate report.

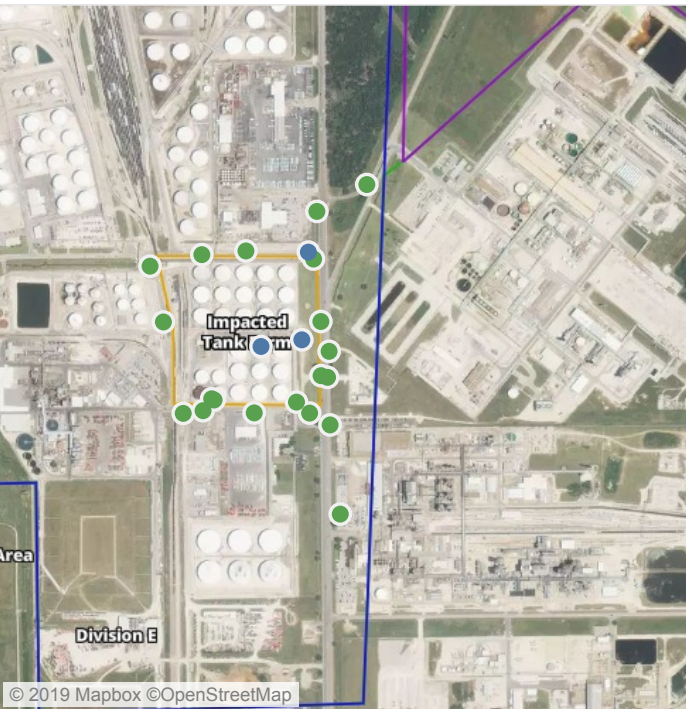
Preliminary Hand- Held Air Monitoring Locations | ITC Deer Park Tank Fire

Reading Date
7/21/2019 8:00:00 AM to 7/21/2019 9:00:00 AM



Recent Benzene Detections

Location Category	Reading Date	Range of Detections
Division E	7/21/2019 08:26:44	0.04000 ppm
Impacted Tank Farm	7/21/2019 08:07:44	0.04000 ppm
	7/21/2019 08:15:19	0.05000 ppm



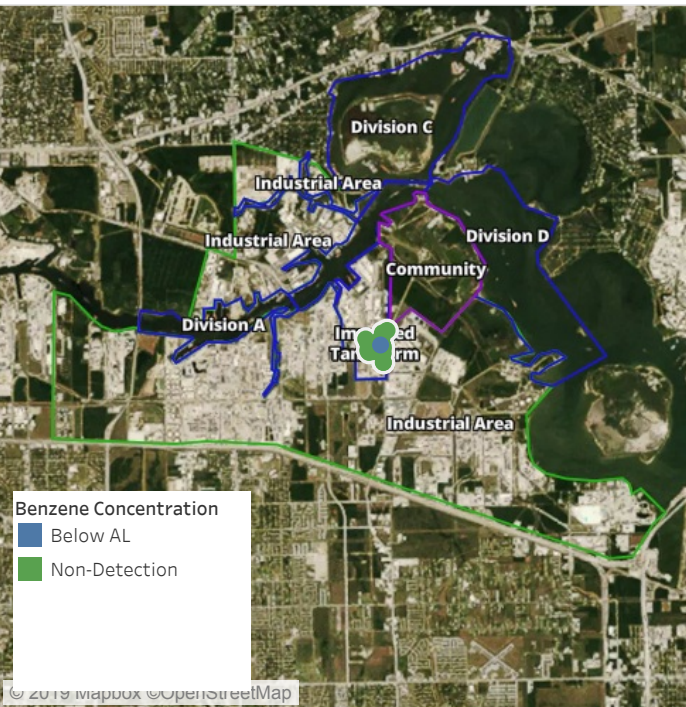
This data has been provided expeditiously to ITC and regulatory agencies for informational and/or operational purposes only. Data reported within this summary is preliminary in nature and has not undergone complete QA/QC (quality assurance/quality control) process. Until this complete QA/QC process is completed, the locations of each reading are approximate in nature and subject to further refinement. As some readings may represent non-brea..



Please Note: These updates display data from the 2nd 80's Fire site (Impacted Tank Farm), in the industrial areas surrounding the 2nd 80's Fire site (US Coast Guard Division E), within the Houston Ship Channel (US Coast Guard Divisions A-D), and in the industrial areas north and south of the Houston Ship Channel (Industrial Area). Real-time air monitoring data for the surrounding communities are communicated daily in a separate report.

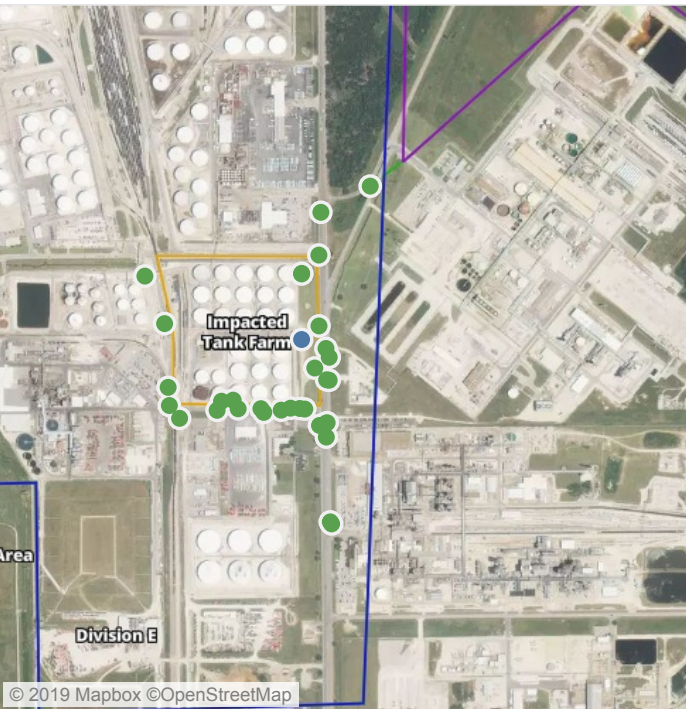
Preliminary Hand- Held Air Monitoring Locations | ITC Deer Park Tank Fire

Reading Date
7/21/2019 9:00:00 AM to 7/21/2019 10:00:00 AM



Recent Benzene Detections

Location Category	Reading Date	Range of Detections
Division E	7/21/2019 09:20:58	0.1300 ppm



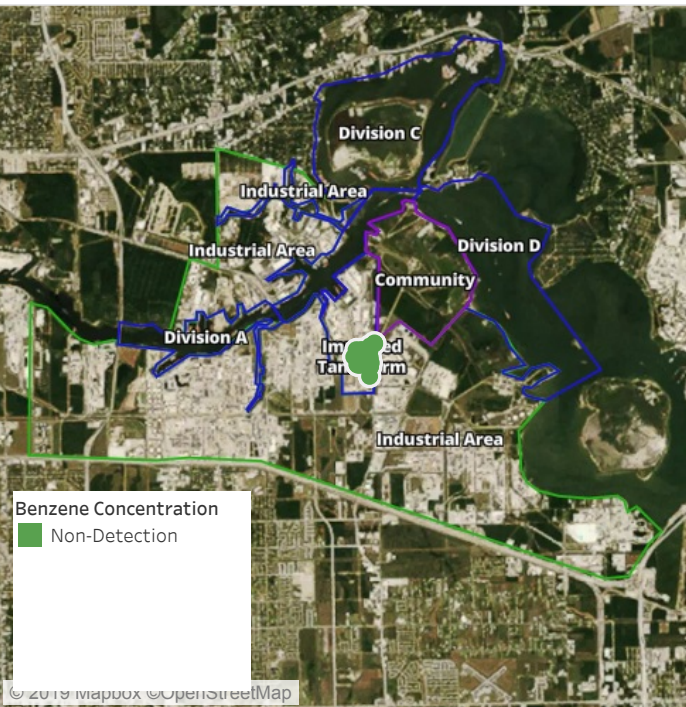
This data has been provided expeditiously to ITC and regulatory agencies for informational and/or operational purposes only. Data reported within this summary is preliminary in nature and has not undergone complete QA/QC (quality assurance/quality control) process. Until this complete QA/QC process is completed, the locations of each reading are approximate in nature and subject to further refinement. As some readings may represent non-brea..



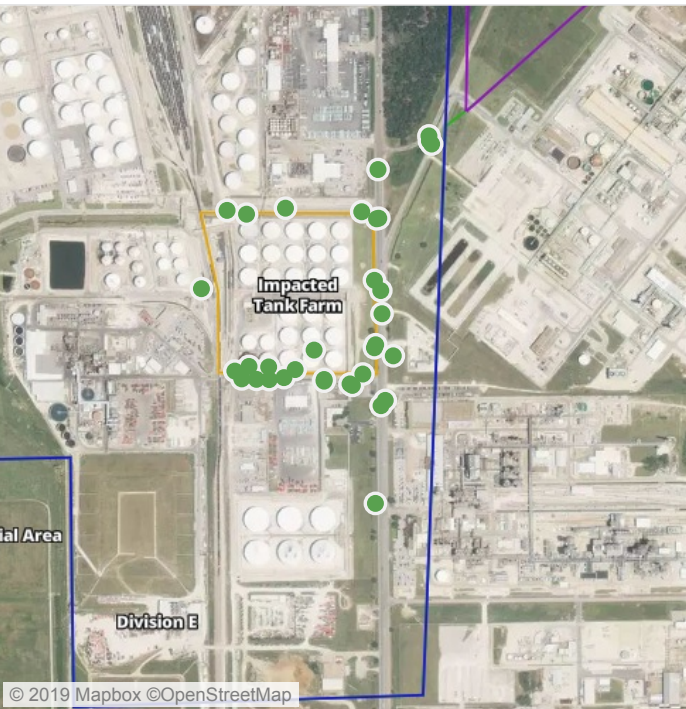
Please Note: These updates display data from the 2nd 80's Fire site (Impacted Tank Farm), in the industrial areas surrounding the 2nd 80's Fire site (US Coast Guard Division E), within the Houston Ship Channel (US Coast Guard Divisions A-D), and in the industrial areas north and south of the Houston Ship Channel (Industrial Area). Real-time air monitoring data for the surrounding communities are communicated daily in a separate report.

Preliminary Hand- Held Air Monitoring Locations | ITC Deer Park Tank Fire

Reading Date
7/21/2019 10:00:00 AM to 7/21/2019 11:00:00 AM



Recent Benzene Detections



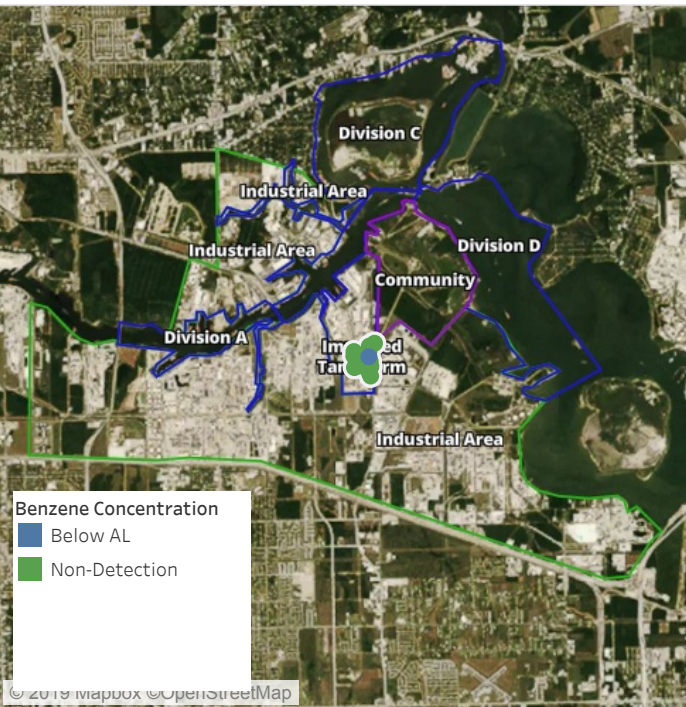
This data has been provided expeditiously to ITC and regulatory agencies for informational and/or operational purposes only. Data reported within this summary is preliminary in nature and has not undergone complete QA/QC (quality assurance/quality control) process. Until this complete QA/QC process is completed, the locations of each reading are approximate in nature and subject to further refinement. As some readings may represent non-brea..



Please Note: These updates display data from the 2nd 80's Fire site (Impacted Tank Farm), in the industrial areas surrounding the 2nd 80's Fire site (US Coast Guard Division E), within the Houston Ship Channel (US Coast Guard Divisions A-D), and in the industrial areas north and south of the Houston Ship Channel (Industrial Area). Real-time air monitoring data for the surrounding communities are communicated daily in a separate report.

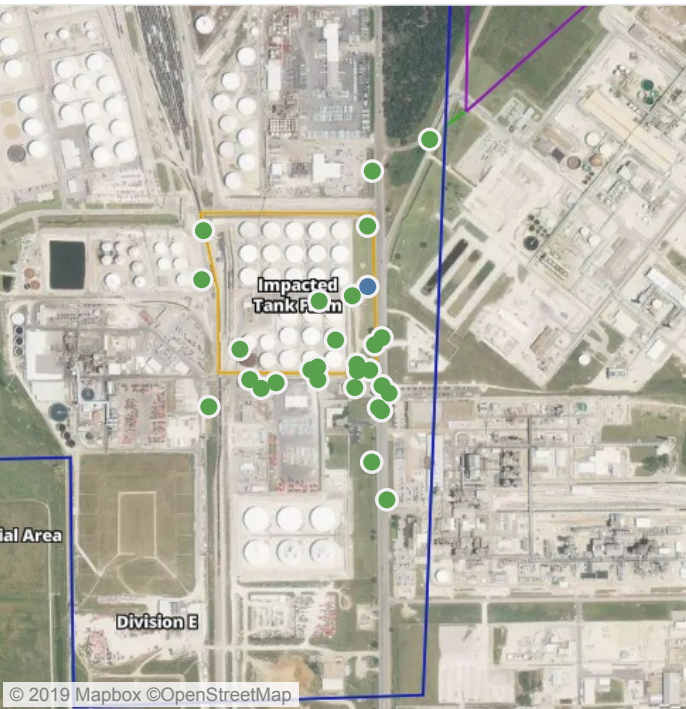
Preliminary Hand- Held Air Monitoring Locations | ITC Deer Park Tank Fire

Reading Date
7/21/2019 11:00:00 AM to 7/21/2019 12:00:00 PM



Recent Benzene Detections

Location Category	Reading Date	Range of Detections
Division E	7/21/2019 11:20:06	0.04000 ppm



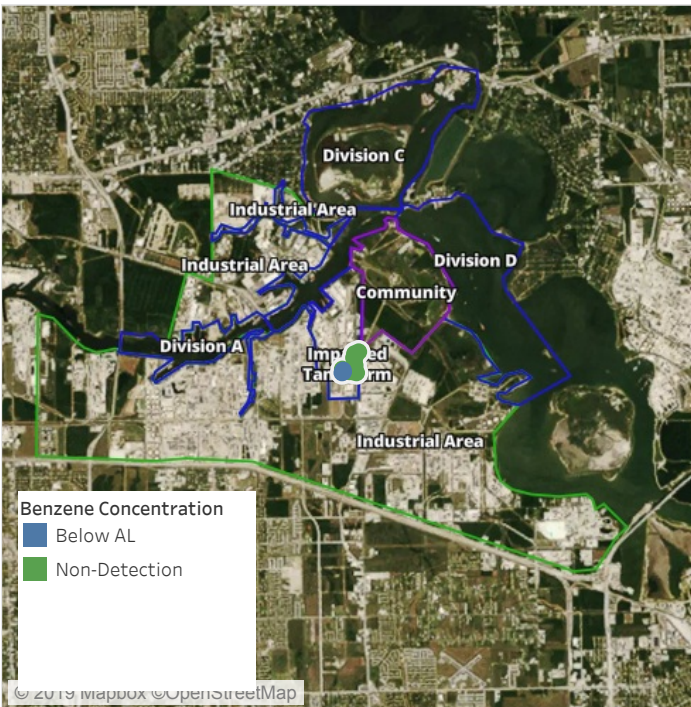
This data has been provided expeditiously to ITC and regulatory agencies for informational and/or operational purposes only. Data reported within this summary is preliminary in nature and has not undergone complete QA/QC (quality assurance/quality control) process. Until this complete QA/QC process is completed, the locations of each reading are approximate in nature and subject to further refinement. As some readings may represent non-brea..



Please Note: These updates display data from the 2nd 80's Fire site (Impacted Tank Farm), in the industrial areas surrounding the 2nd 80's Fire site (US Coast Guard Division E), within the Houston Ship Channel (US Coast Guard Divisions A-D), and in the industrial areas north and south of the Houston Ship Channel (Industrial Area). Real-time air monitoring data for the surrounding communities are communicated daily in a separate report.

Preliminary Hand- Held Air Monitoring Locations | ITC Deer Park Tank Fire

Reading Date
7/21/2019 12:00:00 PM to 7/21/2019 1:00:00 PM



Recent Benzene Detections

Location Category	Reading Date	Range of Detections
Division E	7/21/2019 12:34:53	0.1600 ppm
	7/21/2019 12:39:17	0.0600 ppm
	7/21/2019 12:57:12	0.1600 ppm
	7/21/2019 12:48:15	0.2300 ppm



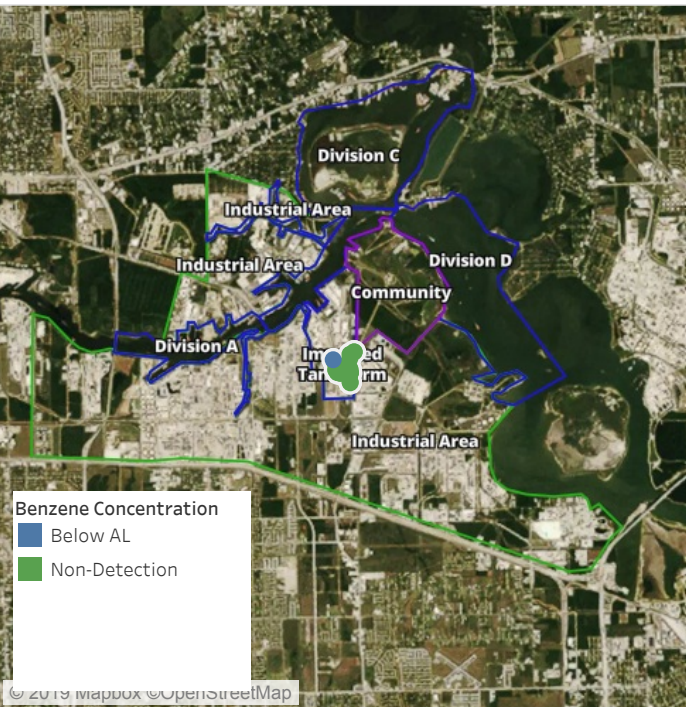
This data has been provided expeditiously to ITC and regulatory agencies for informational and/or operational purposes only. Data reported within this summary is preliminary in nature and has not undergone complete QA/QC (quality assurance/quality control) process. Until this complete QA/QC process is completed, the locations of each reading are approximate in nature and subject to further refinement. As some readings may represent non-brea..



Please Note: These updates display data from the 2nd 80's Fire site (Impacted Tank Farm), in the industrial areas surrounding the 2nd 80's Fire site (US Coast Guard Division E), within the Houston Ship Channel (US Coast Guard Divisions A-D), and in the industrial areas north and south of the Houston Ship Channel (Industrial Area). Real-time air monitoring data for the surrounding communities are communicated daily in a separate report.

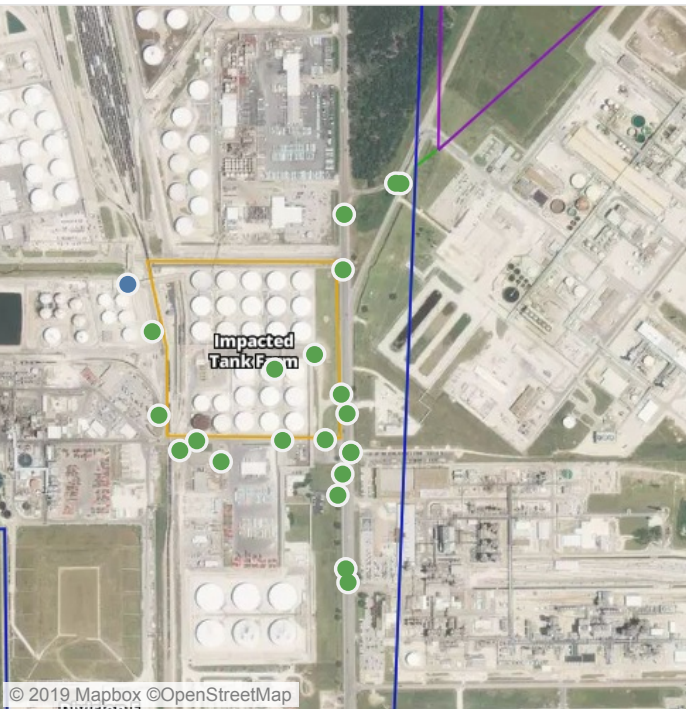
Preliminary Hand- Held Air Monitoring Locations | ITC Deer Park Tank Fire

Reading Date
7/21/2019 1:00:00 PM to 7/21/2019 2:00:00 PM



Recent Benzene Detections

Location Category	Reading Date	Range of Detections
Division E	7/21/2019 13:59:07	0.02000 ppm



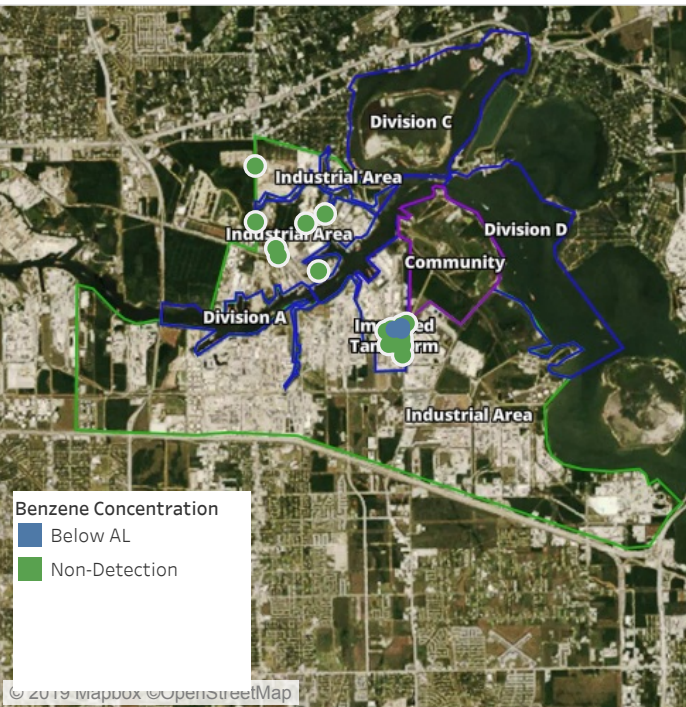
This data has been provided expeditiously to ITC and regulatory agencies for informational and/or operational purposes only. Data reported within this summary is preliminary in nature and has not undergone complete QA/QC (quality assurance/quality control) process. Until this complete QA/QC process is completed, the locations of each reading are approximate in nature and subject to further refinement. As some readings may represent non-brea..



Please Note: These updates display data from the 2nd 80's Fire site (Impacted Tank Farm), in the industrial areas surrounding the 2nd 80's Fire site (US Coast Guard Division E), within the Houston Ship Channel (US Coast Guard Divisions A-D), and in the industrial areas north and south of the Houston Ship Channel (Industrial Area). Real-time air monitoring data for the surrounding communities are communicated daily in a separate report.

Preliminary Hand- Held Air Monitoring Locations | ITC Deer Park Tank Fire

Reading Date
7/21/2019 2:00:00 PM to 7/21/2019 3:00:00 PM



Recent Benzene Detections

Location Category	Reading Date	Range of Detections
Division E	7/21/2019 14:09:00	0.08000 ppm
	7/21/2019 14:04:15	0.05000 ppm
	7/21/2019 14:20:38	0.03000 ppm



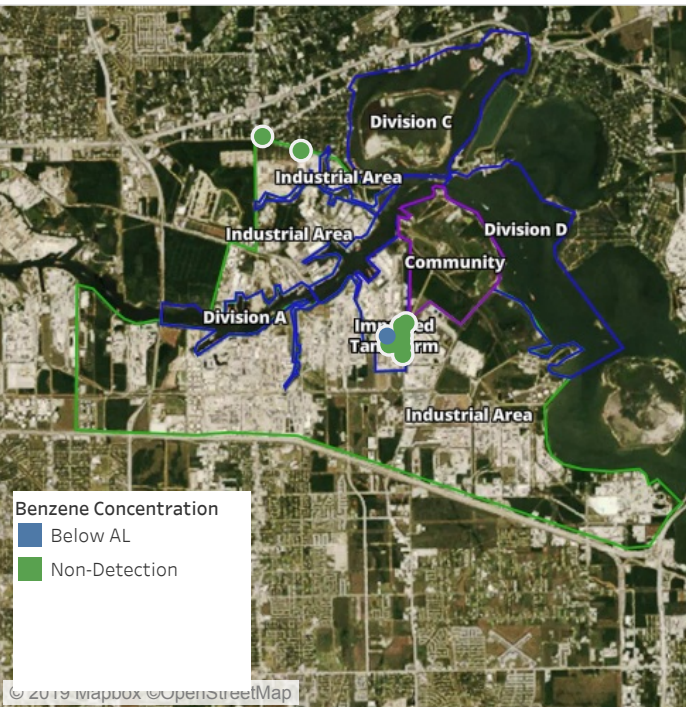
This data has been provided expeditiously to ITC and regulatory agencies for informational and/or operational purposes only. Data reported within this summary is preliminary in nature and has not undergone complete QA/QC (quality assurance/quality control) process. Until this complete QA/QC process is completed, the locations of each reading are approximate in nature and subject to further refinement. As some readings may represent non-brea..



Please Note: These updates display data from the 2nd 80's Fire site (Impacted Tank Farm), in the industrial areas surrounding the 2nd 80's Fire site (US Coast Guard Division E), within the Houston Ship Channel (US Coast Guard Divisions A-D), and in the industrial areas north and south of the Houston Ship Channel (Industrial Area). Real-time air monitoring data for the surrounding communities are communicated daily in a separate report.

Preliminary Hand- Held Air Monitoring Locations | ITC Deer Park Tank Fire

Reading Date
7/21/2019 3:00:00 PM to 7/21/2019 4:00:00 PM



Recent Benzene Detections

Location Category	Reading Date	Range of Detections
Division E	7/21/2019 15:23:26	0.02000 ppm



This data has been provided expeditiously to ITC and regulatory agencies for informational and/or operational purposes only. Data reported within this summary is preliminary in nature and has not undergone complete QA/QC (quality assurance/quality control) process. Until this complete QA/QC process is completed, the locations of each reading are approximate in nature and subject to further refinement. As some readings may represent non-brea..

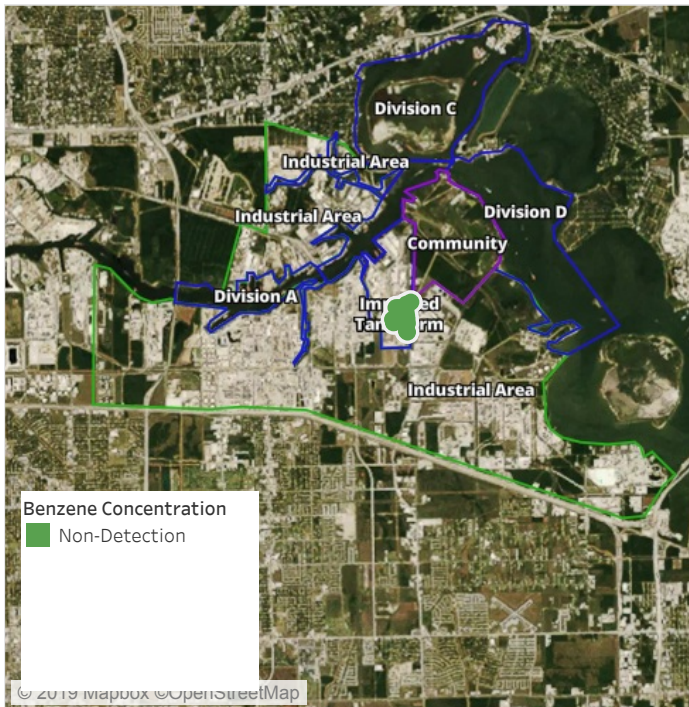


Please Note: These updates display data from the 2nd 80's Fire site (Impacted Tank Farm), in the industrial areas surrounding the 2nd 80's Fire site (US Coast Guard Division E), within the Houston Ship Channel (US Coast Guard Divisions A-D), and in the industrial areas north and south of the Houston Ship Channel (Industrial Area). Real-time air monitoring data for the surrounding communities are communicated daily in a separate report.

Preliminary Hand- Held Air Monitoring Locations | ITC Deer Park Tank Fire

Reading Date

7/21/2019 4:00:00 PM to 7/21/2019 5:00:00 PM



Recent Benzene Detections



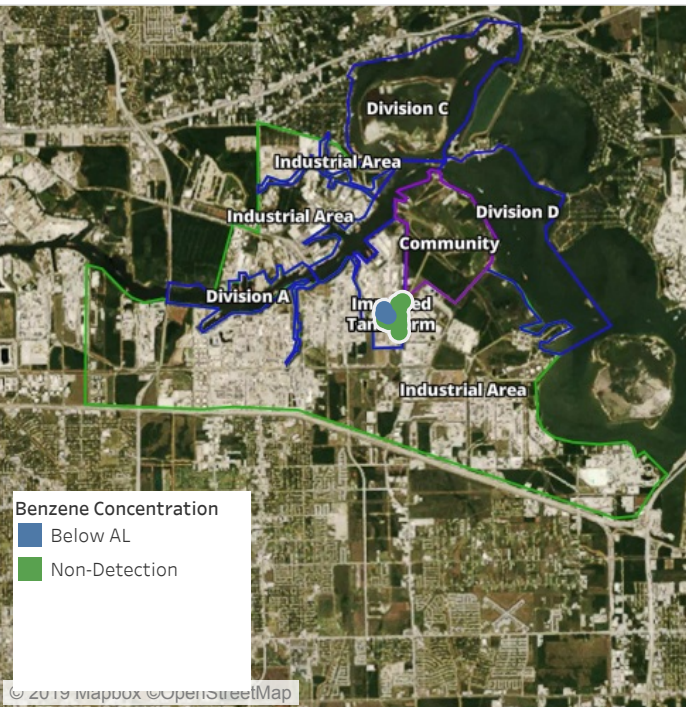
This data has been provided expeditiously to ITC and regulatory agencies for informational and/or operational purposes only. Data reported within this summary is preliminary in nature and has not undergone complete QA/QC (quality assurance/quality control) process. Until this complete QA/QC process is completed, the locations of each reading are approximate in nature and subject to further refinement. As some readings may represent non-brea..



Please Note: These updates display data from the 2nd 80's Fire site (Impacted Tank Farm), in the industrial areas surrounding the 2nd 80's Fire site (US Coast Guard Division E), within the Houston Ship Channel (US Coast Guard Divisions A-D), and in the industrial areas north and south of the Houston Ship Channel (Industrial Area). Real-time air monitoring data for the surrounding communities are communicated daily in a separate report.

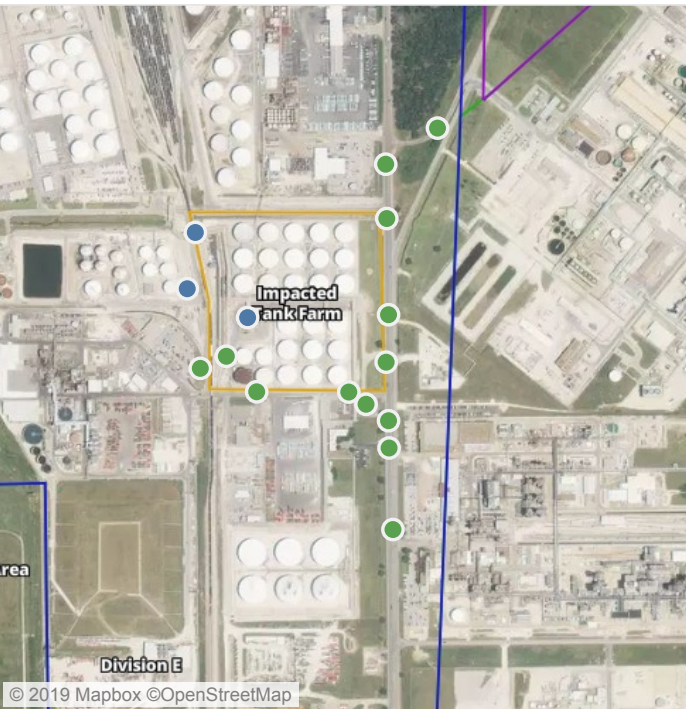
Preliminary Hand- Held Air Monitoring Locations | ITC Deer Park Tank Fire

Reading Date
7/21/2019 5:00:00 PM to 7/21/2019 6:00:00 PM



Recent Benzene Detections

Location Category	Reading Date	Range of Detections
Division E	7/21/2019 17:09:21	0.0400 ppm
	7/21/2019 17:15:34	0.0300 ppm
Impacted Tank Farm	7/21/2019 17:52:13	0.1400 ppm



This data has been provided expeditiously to ITC and regulatory agencies for informational and/or operational purposes only. Data reported within this summary is preliminary in nature and has not undergone complete QA/QC (quality assurance/quality control) process. Until this complete QA/QC process is completed, the locations of each reading are approximate in nature and subject to further refinement. As some readings may represent non-brea..



Please Note: These updates display data from the 2nd 80's Fire site (Impacted Tank Farm), in the industrial areas surrounding the 2nd 80's Fire site (US Coast Guard Division E), within the Houston Ship Channel (US Coast Guard Divisions A-D), and in the industrial areas north and south of the Houston Ship Channel (Industrial Area). Real-time air monitoring data for the surrounding communities are communicated daily in a separate report.