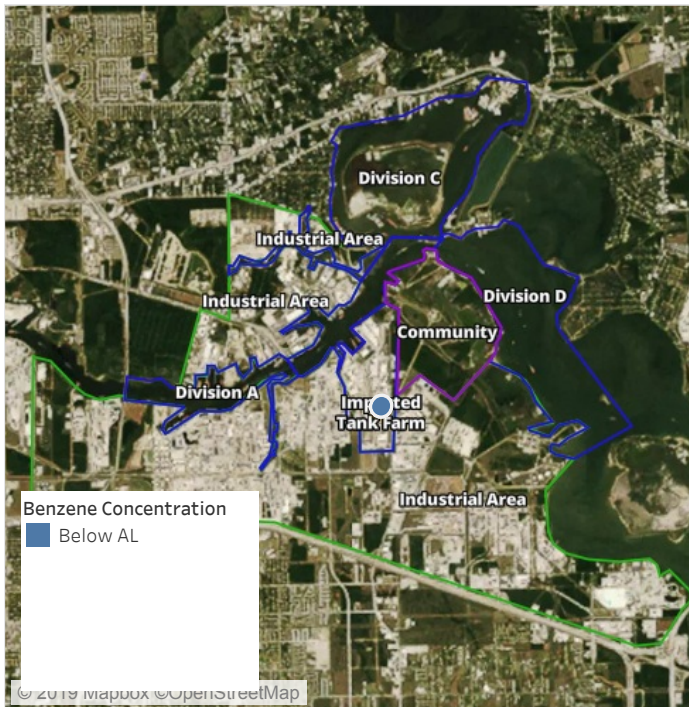


# Preliminary Hand- Held Air Monitoring Locations | ITC Deer Park Tank Fire

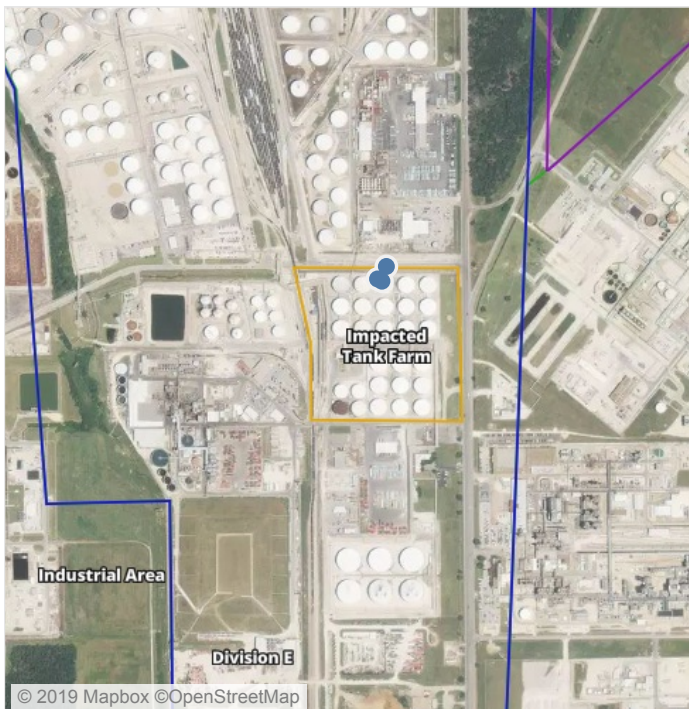
Reading Date

8/8/2019 7:00:00 AM to 8/8/2019 8:00:00 AM

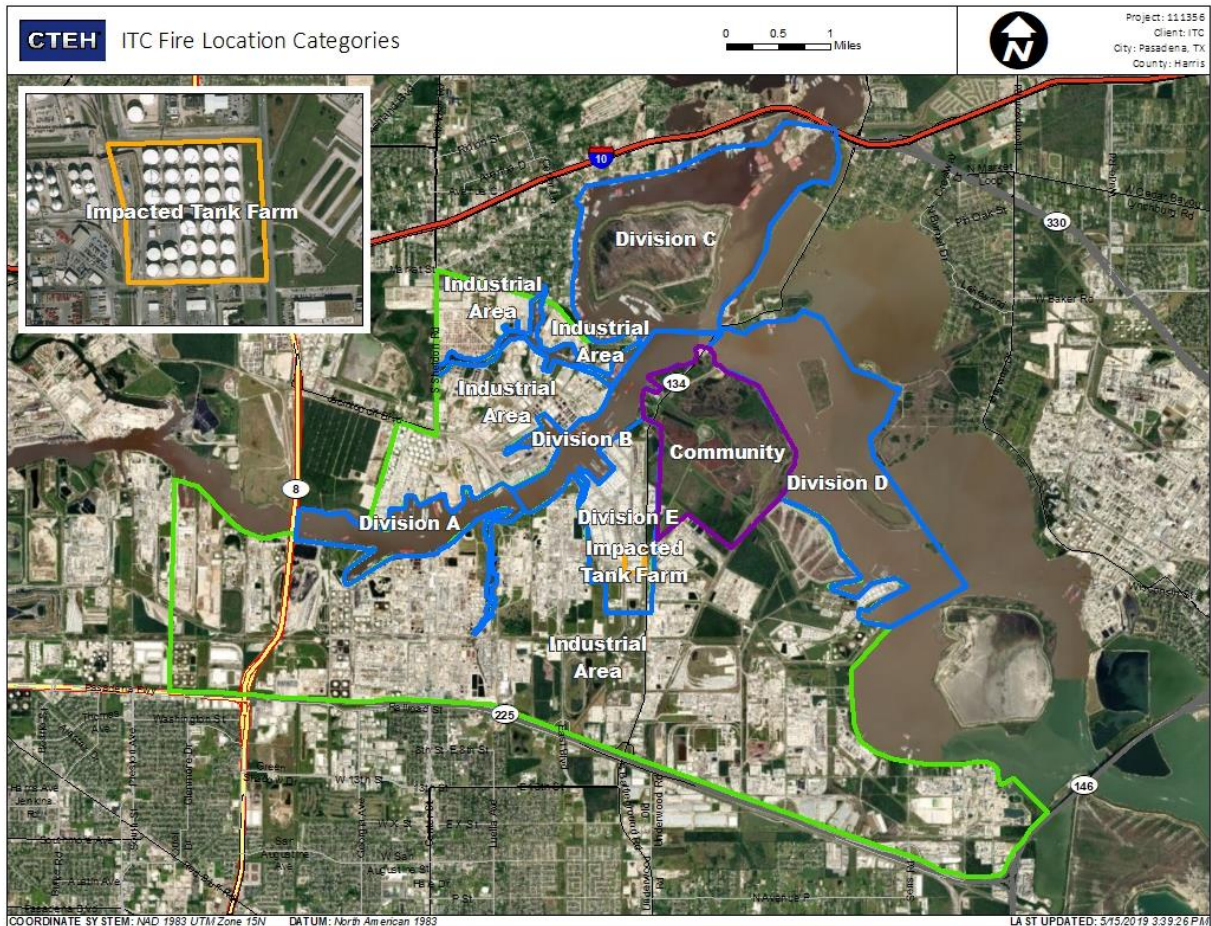


## Recent Benzene Detections

Location Category	Reading Date	Range of Detections
Division E	8/8/2019 07:39:48	0.0200 ppm
	8/8/2019 07:48:24	0.3100 ppm
	8/8/2019 07:49:40	0.0500 ppm



This data has been provided expeditiously to ITC and regulatory agencies for informational and/or operational purposes only. Data reported within this summary is preliminary in nature and has not undergone complete QA/QC (quality assurance/quality control) process. Until this complete QA/QC process is completed, the locations of each reading are approximate in nature and subject to further refinement. As some readings may represent non-brea..



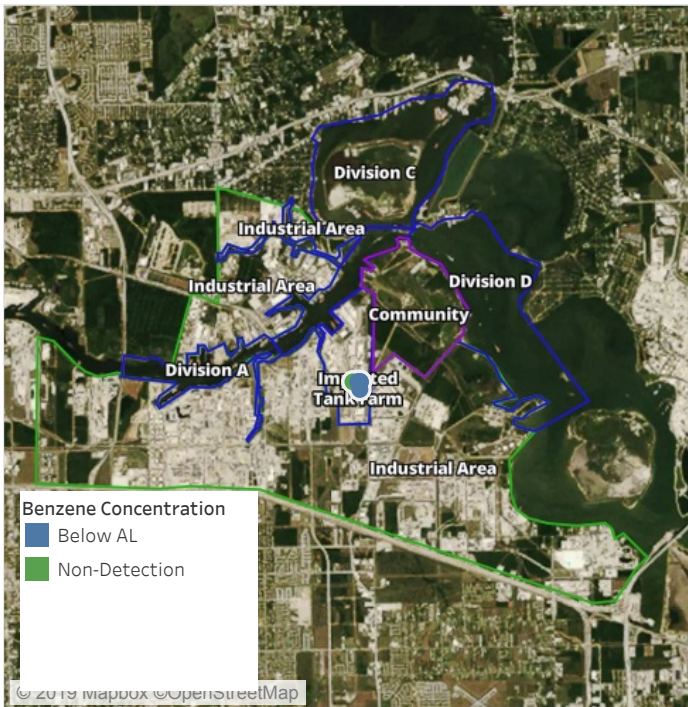
**Please Note:** These updates display data from the 2<sup>nd</sup> 80's Fire site (Impacted Tank Farm), in the industrial areas surrounding the 2<sup>nd</sup> 80's Fire site (US Coast Guard Division E), within the Houston Ship Channel (US Coast Guard Divisions A-D), and in the industrial areas north and south of the Houston Ship Channel (Industrial Area). Real-time air monitoring data for the surrounding communities are communicated daily in a separate report.



# Preliminary Hand- Held Air Monitoring Locations | ITC Deer Park Tank Fire

Reading Date

8/8/2019 8:00:00 AM to 8/8/2019 9:00:00 AM

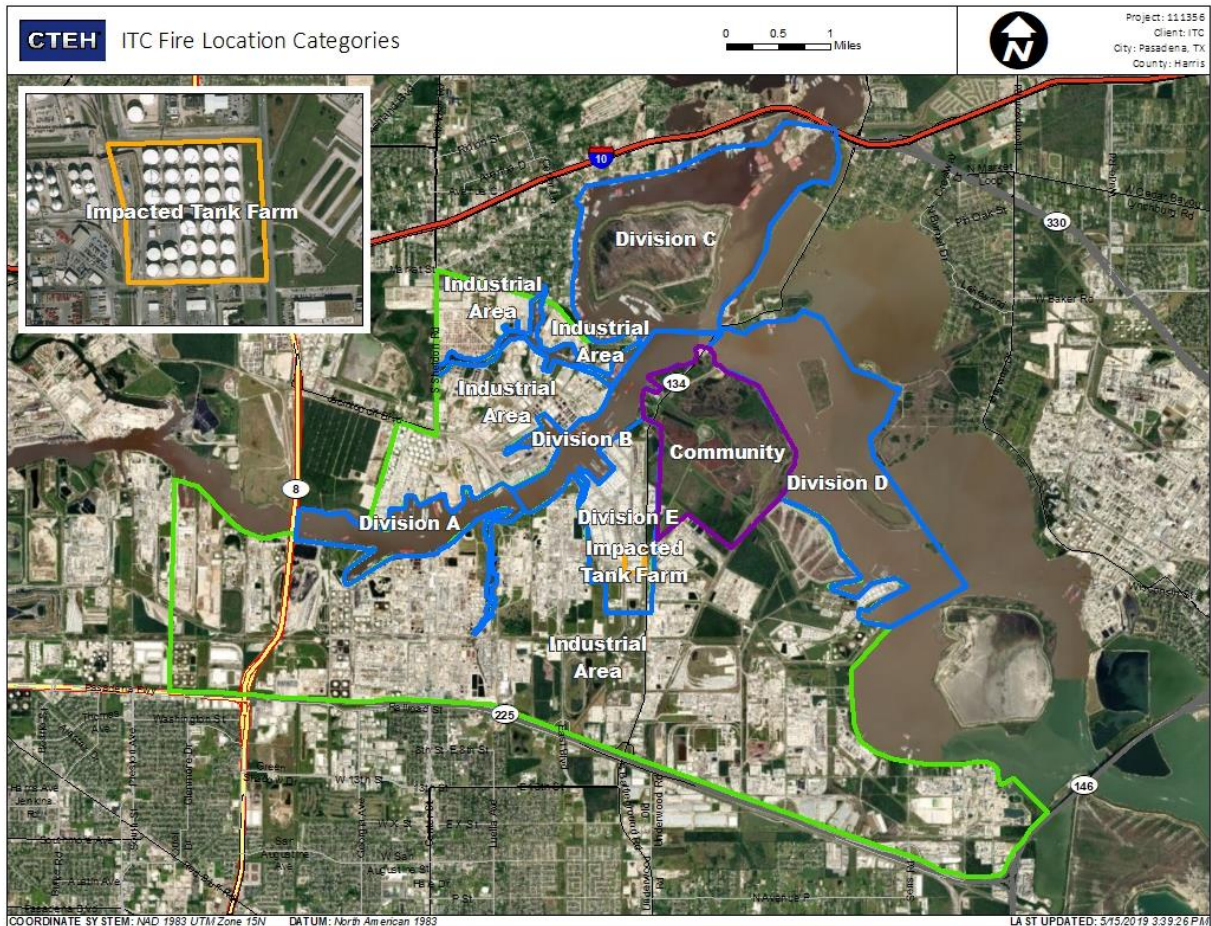


## Recent Benzene Detections

Location Category	Reading Date	Range of Detections
Division E	8/8/2019 08:38:01	0.0800 ppm
	8/8/2019 08:49:53	0.0900 ppm
	8/8/2019 08:47:50	0.2300 ppm
Impacted Tank Farm	8/8/2019 08:13:15	0.2500 ppm
	8/8/2019 08:25:20	0.3300 ppm
	8/8/2019 08:21:49	0.1500 ppm
	8/8/2019 08:26:56	0.0900 ppm



This data has been provided expeditiously to ITC and regulatory agencies for informational and/or operational purposes only. Data reported within this summary is preliminary in nature and has not undergone complete QA/QC (quality assurance/quality control) process. Until this complete QA/QC process is completed, the locations of each reading are approximate in nature and subject to further refinement. As some readings may represent non-brea..



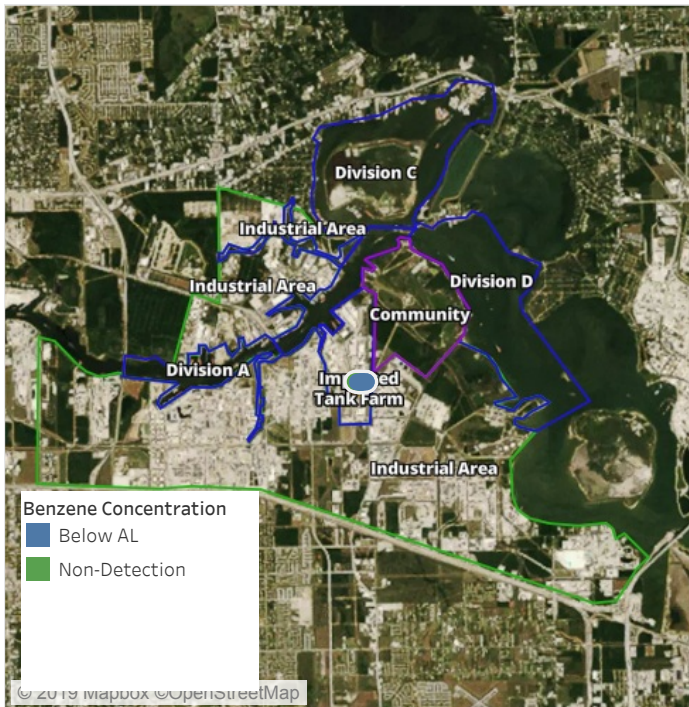
**Please Note:** These updates display data from the 2<sup>nd</sup> 80's Fire site (Impacted Tank Farm), in the industrial areas surrounding the 2<sup>nd</sup> 80's Fire site (US Coast Guard Division E), within the Houston Ship Channel (US Coast Guard Divisions A-D), and in the industrial areas north and south of the Houston Ship Channel (Industrial Area). Real-time air monitoring data for the surrounding communities are communicated daily in a separate report.



# Preliminary Hand- Held Air Monitoring Locations | ITC Deer Park Tank Fire

Reading Date

8/8/2019 9:00:00 AM to 8/8/2019 10:00:00 AM

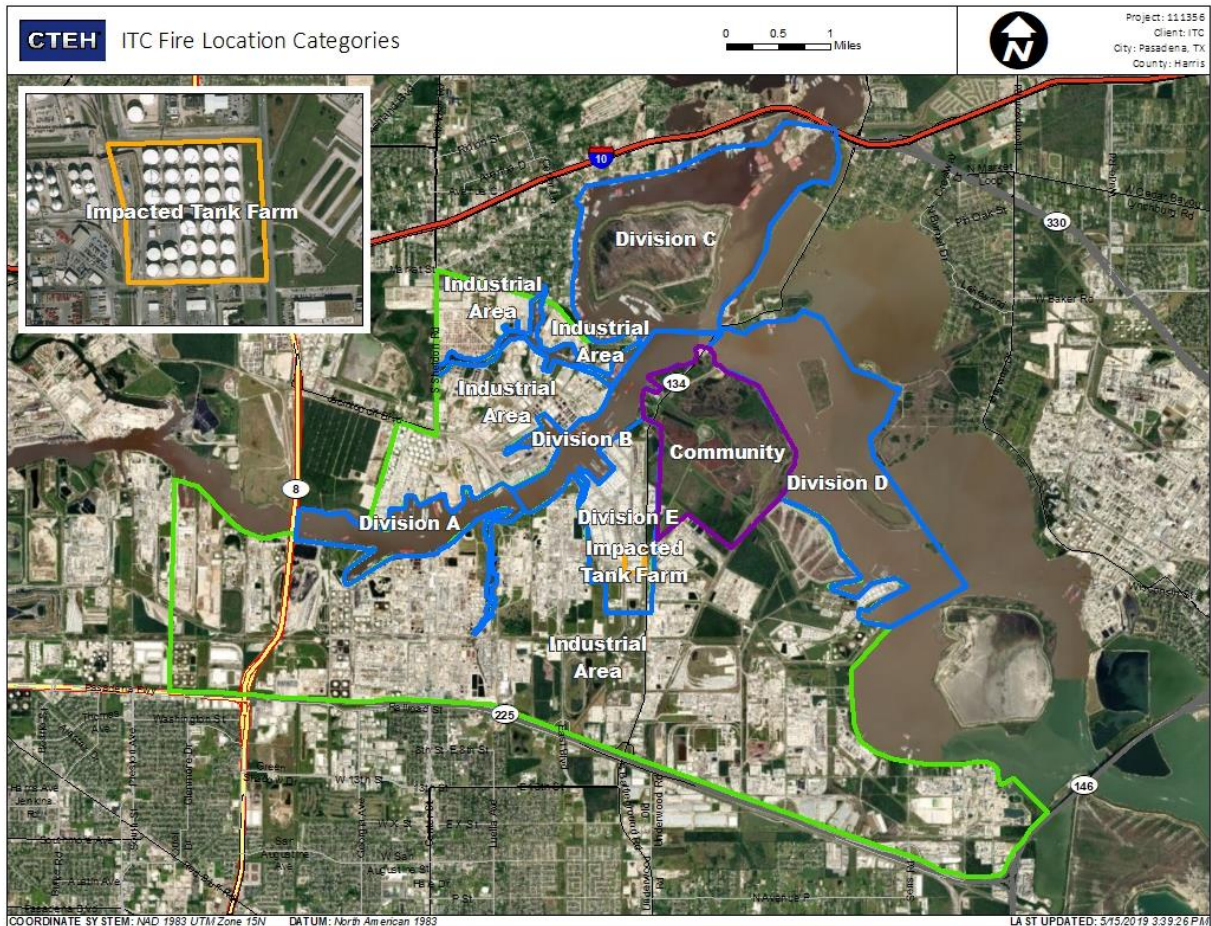


## Recent Benzene Detections

Location Category	Reading Date	Range of Detections
Division E	8/8/2019 09:08:53	0.0400 ppm
	8/8/2019 09:22:49	0.1000 ppm
	8/8/2019 09:41:16	0.1000 ppm
	8/8/2019 09:25:55	0.2200 ppm
	8/8/2019 09:29:31	0.3500 ppm
	8/8/2019 09:38:52	0.1000 ppm
	8/8/2019 09:44:40	0.0600 ppm
	8/8/2019 09:58:29	0.2000 ppm
	8/8/2019 09:50:22	0.1900 ppm
	8/8/2019 09:55:09	0.0500 ppm



This data has been provided expeditiously to ITC and regulatory agencies for informational and/or operational purposes only. Data reported within this summary is preliminary in nature and has not undergone complete QA/QC (quality assurance/quality control) process. Until this complete QA/QC process is completed, the locations of each reading are approximate in nature and subject to further refinement. As some readings may represent non-brea..



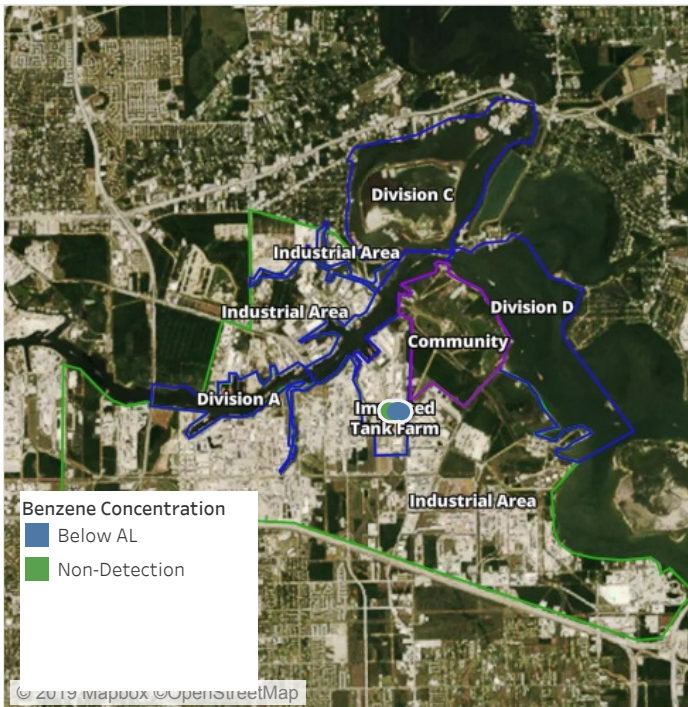
**Please Note:** These updates display data from the 2<sup>nd</sup> 80's Fire site (Impacted Tank Farm), in the industrial areas surrounding the 2<sup>nd</sup> 80's Fire site (US Coast Guard Division E), within the Houston Ship Channel (US Coast Guard Divisions A-D), and in the industrial areas north and south of the Houston Ship Channel (Industrial Area). Real-time air monitoring data for the surrounding communities are communicated daily in a separate report.



# Preliminary Hand- Held Air Monitoring Locations | ITC Deer Park Tank Fire

## Reading Date

8/8/2019 10:00:00 AM to 8/8/2019 11:00:00 AM

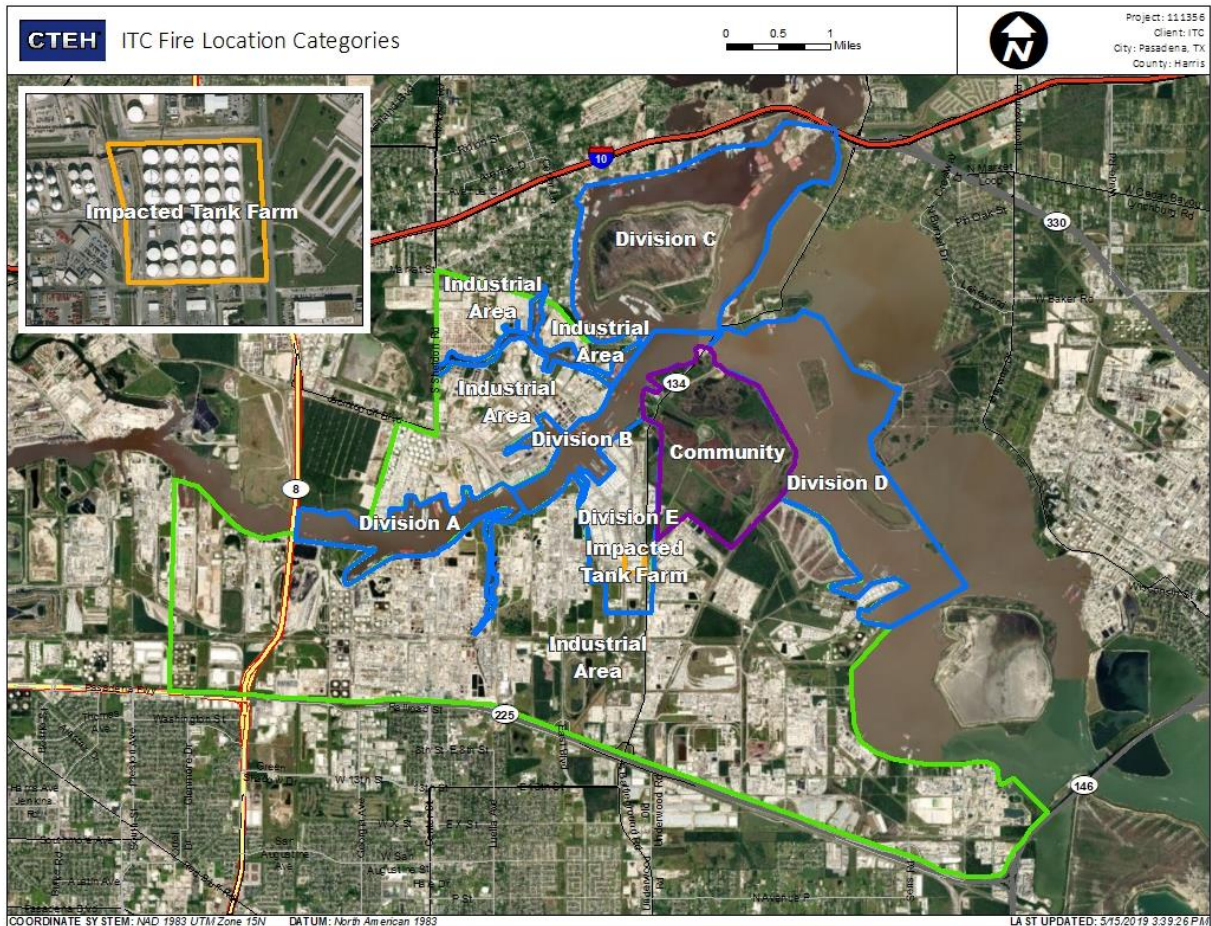


## Recent Benzene Detections

Location Category	Reading Date	Range of Detections
Division E	8/8/2019 10:56:52	0.0700 ppm
	8/8/2019 10:41:33	0.1600 ppm
	8/8/2019 10:53:19	0.1300 ppm
	8/8/2019 10:48:33	0.1700 ppm



This data has been provided expeditiously to ITC and regulatory agencies for informational and/or operational purposes only. Data reported within this summary is preliminary in nature and has not undergone complete QA/QC (quality assurance/quality control) process. Until this complete QA/QC process is completed, the locations of each reading are approximate in nature and subject to further refinement. As some readings may represent non-brea..



**Please Note:** These updates display data from the 2<sup>nd</sup> 80's Fire site (Impacted Tank Farm), in the industrial areas surrounding the 2<sup>nd</sup> 80's Fire site (US Coast Guard Division E), within the Houston Ship Channel (US Coast Guard Divisions A-D), and in the industrial areas north and south of the Houston Ship Channel (Industrial Area). Real-time air monitoring data for the surrounding communities are communicated daily in a separate report.



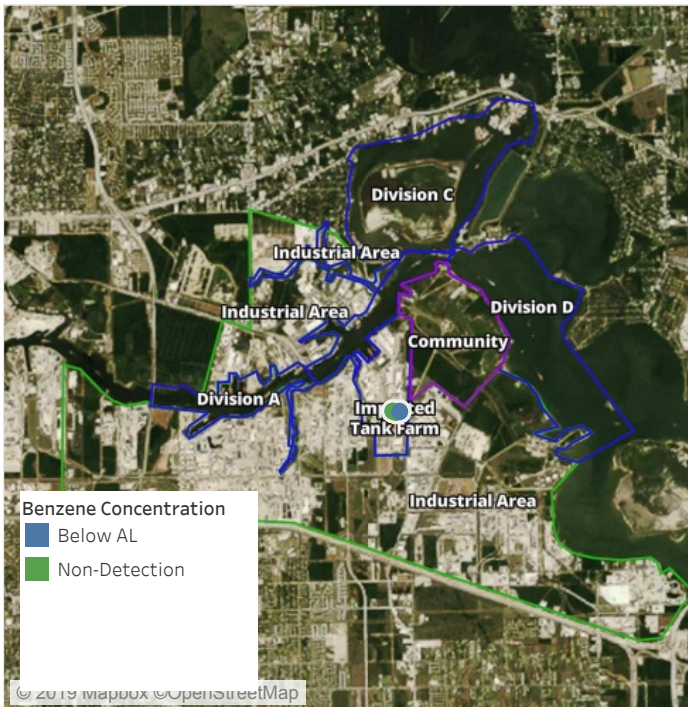
# Preliminary Hand- Held Air Monitoring Locations | ITC Deer Park Tank Fire

Reading Date

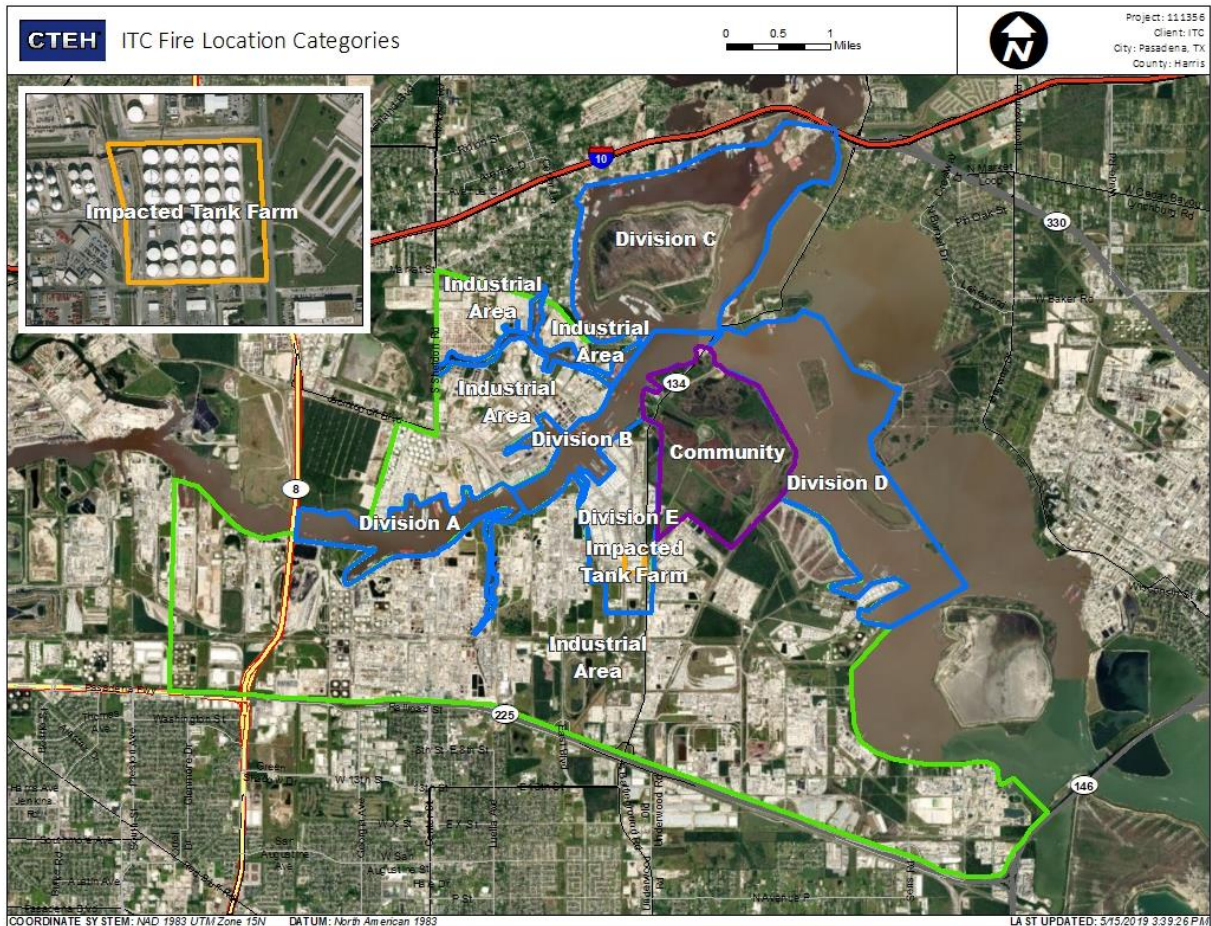
8/8/2019 11:00:00 AM to 8/8/2019 12:00:00 PM

## Recent Benzene Detections

Location Category	Reading Date	Range of Detections
Division E	8/8/2019 11:01:00	0.3500 ppm



This data has been provided expeditiously to ITC and regulatory agencies for informational and/or operational purposes only. Data reported within this summary is preliminary in nature and has not undergone complete QA/QC (quality assurance/quality control) process. Until this complete QA/QC process is completed, the locations of each reading are approximate in nature and subject to further refinement. As some readings may represent non-brea..



**Please Note:** These updates display data from the 2<sup>nd</sup> 80's Fire site (Impacted Tank Farm), in the industrial areas surrounding the 2<sup>nd</sup> 80's Fire site (US Coast Guard Division E), within the Houston Ship Channel (US Coast Guard Divisions A-D), and in the industrial areas north and south of the Houston Ship Channel (Industrial Area). Real-time air monitoring data for the surrounding communities are communicated daily in a separate report.



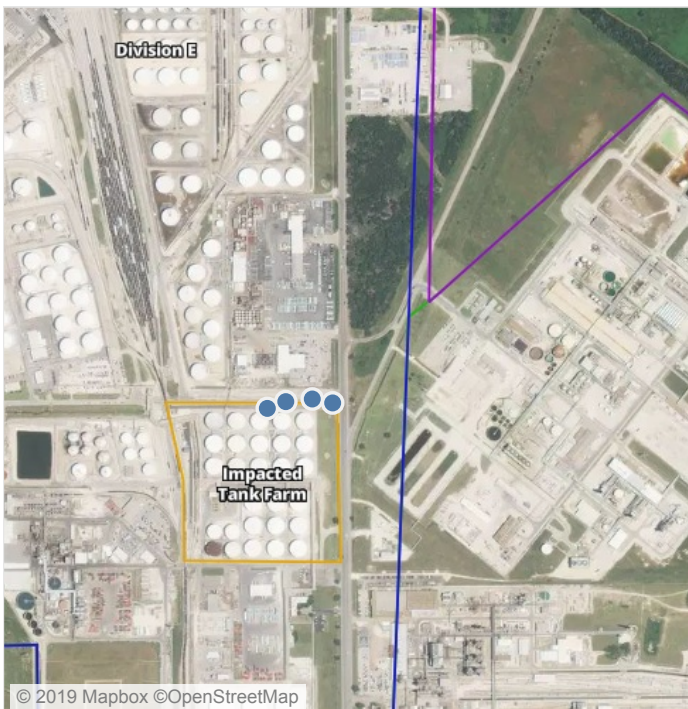
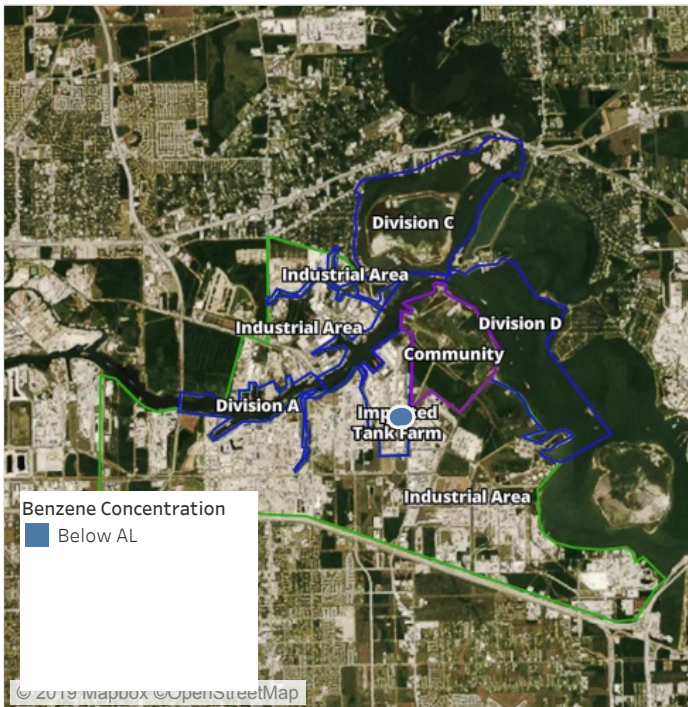
# Preliminary Hand- Held Air Monitoring Locations | ITC Deer Park Tank Fire

## Reading Date

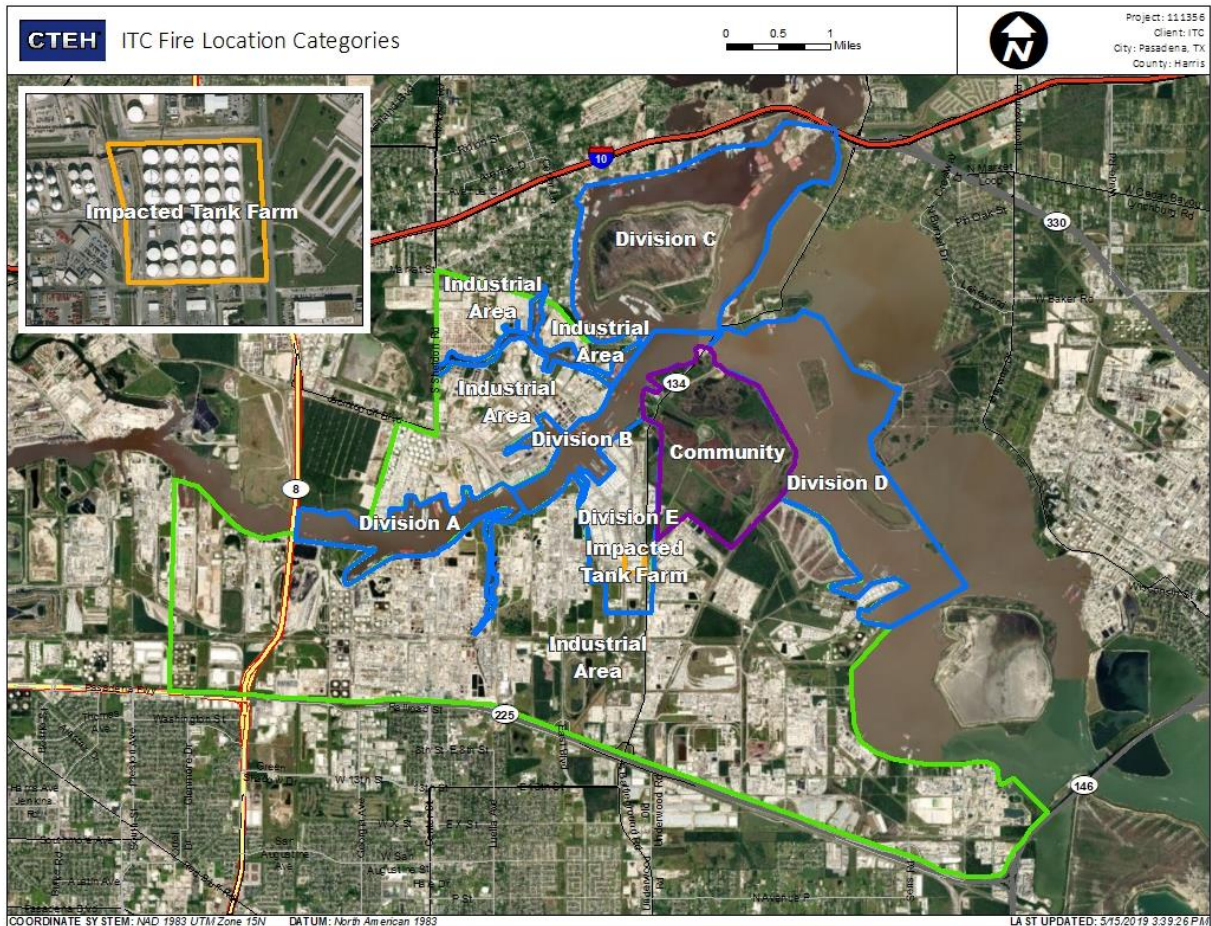
8/8/2019 12:00:00 PM to 8/8/2019 1:00:00 PM

## Recent Benzene Detections

Location Category	Reading Date	Range of Detections
Division E	8/8/2019 12:13:35	0.1500 ppm
	8/8/2019 12:19:22	0.0700 ppm
	8/8/2019 12:32:10	0.0800 ppm
	8/8/2019 12:24:31	0.0200 ppm



This data has been provided expeditiously to ITC and regulatory agencies for informational and/or operational purposes only. Data reported within this summary is preliminary in nature and has not undergone complete QA/QC (quality assurance/quality control) process. Until this complete QA/QC process is completed, the locations of each reading are approximate in nature and subject to further refinement. As some readings may represent non-brea..



**Please Note:** These updates display data from the 2<sup>nd</sup> 80's Fire site (Impacted Tank Farm), in the industrial areas surrounding the 2<sup>nd</sup> 80's Fire site (US Coast Guard Division E), within the Houston Ship Channel (US Coast Guard Divisions A-D), and in the industrial areas north and south of the Houston Ship Channel (Industrial Area). Real-time air monitoring data for the surrounding communities are communicated daily in a separate report.



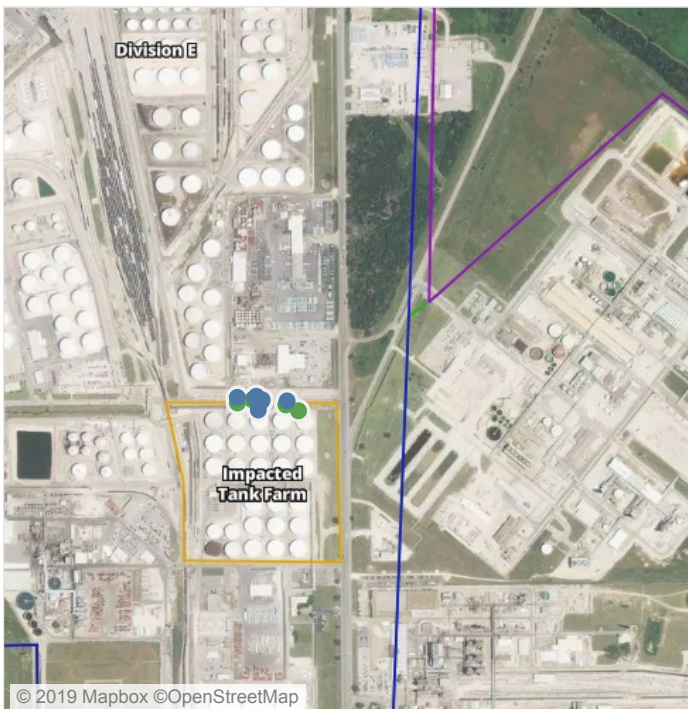
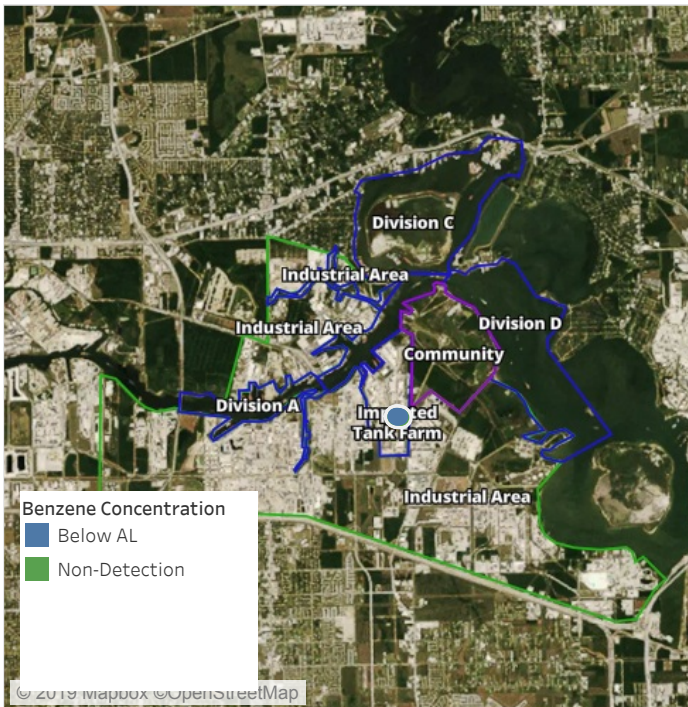
# Preliminary Hand- Held Air Monitoring Locations | ITC Deer Park Tank Fire

## Reading Date

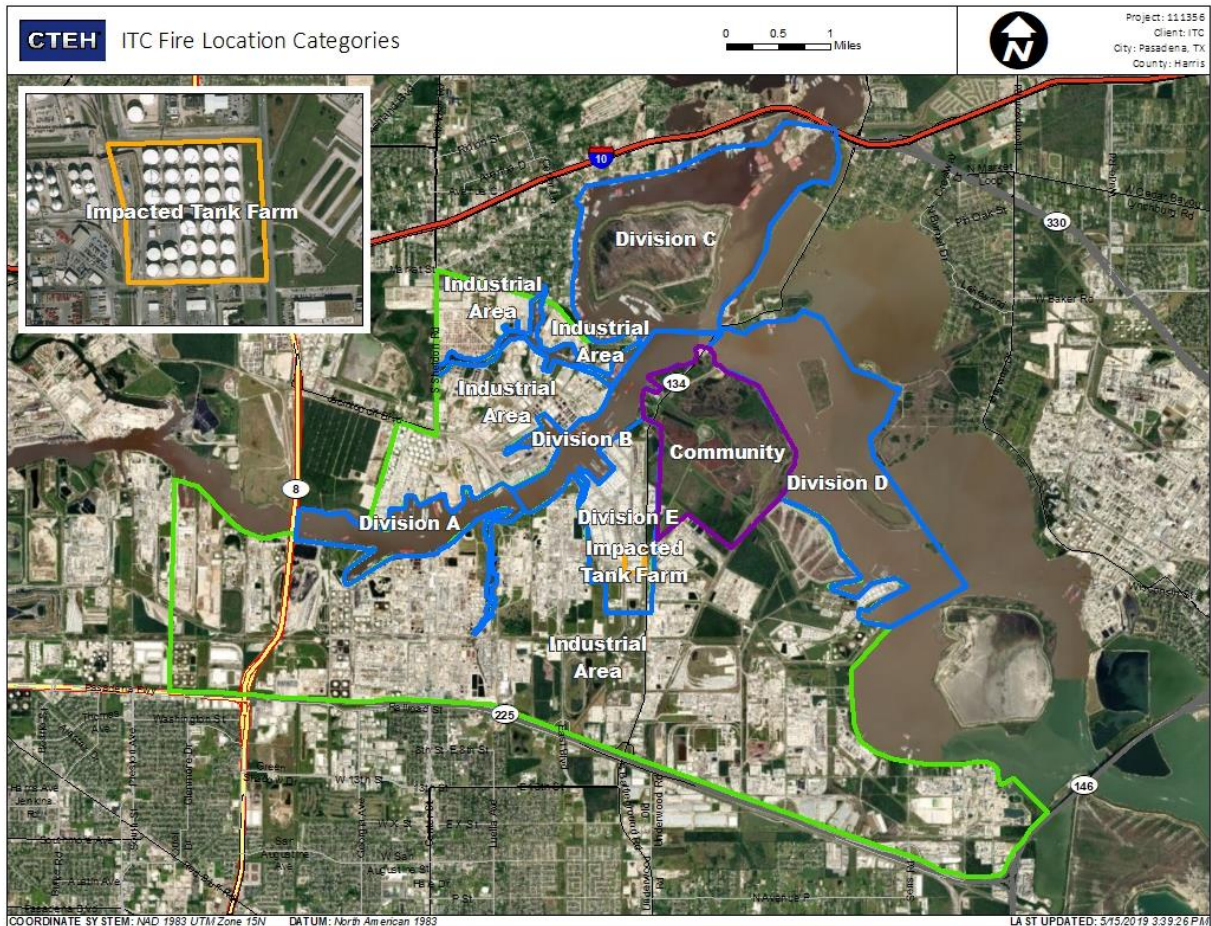
8/8/2019 1:00:00 PM to 8/8/2019 2:00:00 PM

## Recent Benzene Detections

Location Category	Reading Date	Range of Detections
Division E	8/8/2019 13:13:26	0.3200 ppm
	8/8/2019 13:23:47	0.3500 ppm
	8/8/2019 13:47:08	0.2000 ppm
	8/8/2019 13:49:39	0.1200 ppm
	8/8/2019 13:28:09	0.0200 ppm
	8/8/2019 13:30:59	0.0500 ppm
	8/8/2019 13:42:56	0.2800 ppm
	8/8/2019 13:56:48	0.1200 ppm



This data has been provided expeditiously to ITC and regulatory agencies for informational and/or operational purposes only. Data reported within this summary is preliminary in nature and has not undergone complete QA/QC (quality assurance/quality control) process. Until this complete QA/QC process is completed, the locations of each reading are approximate in nature and subject to further refinement. As some readings may represent non-brea..



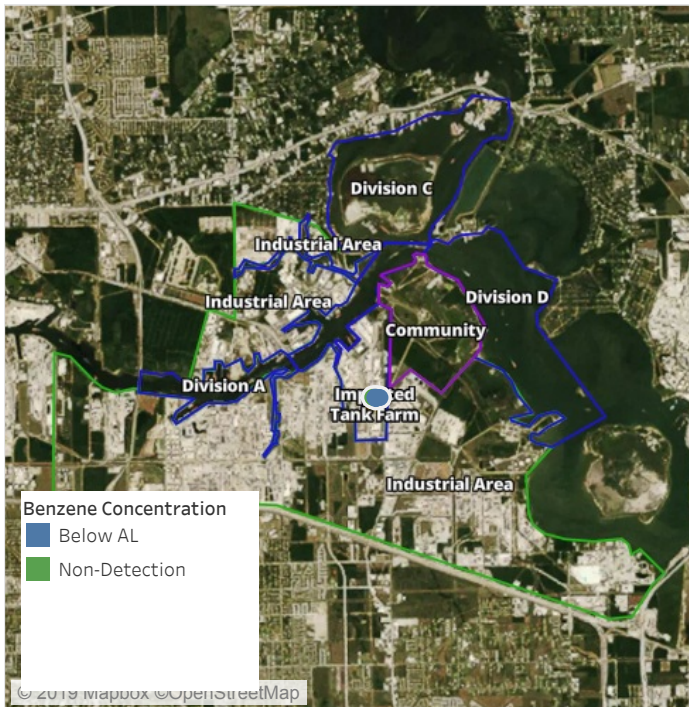
**Please Note:** These updates display data from the 2<sup>nd</sup> 80's Fire site (Impacted Tank Farm), in the industrial areas surrounding the 2<sup>nd</sup> 80's Fire site (US Coast Guard Division E), within the Houston Ship Channel (US Coast Guard Divisions A-D), and in the industrial areas north and south of the Houston Ship Channel (Industrial Area). Real-time air monitoring data for the surrounding communities are communicated daily in a separate report.



# Preliminary Hand- Held Air Monitoring Locations | ITC Deer Park Tank Fire

Reading Date

8/8/2019 2:00:00 PM to 8/8/2019 3:00:00 PM

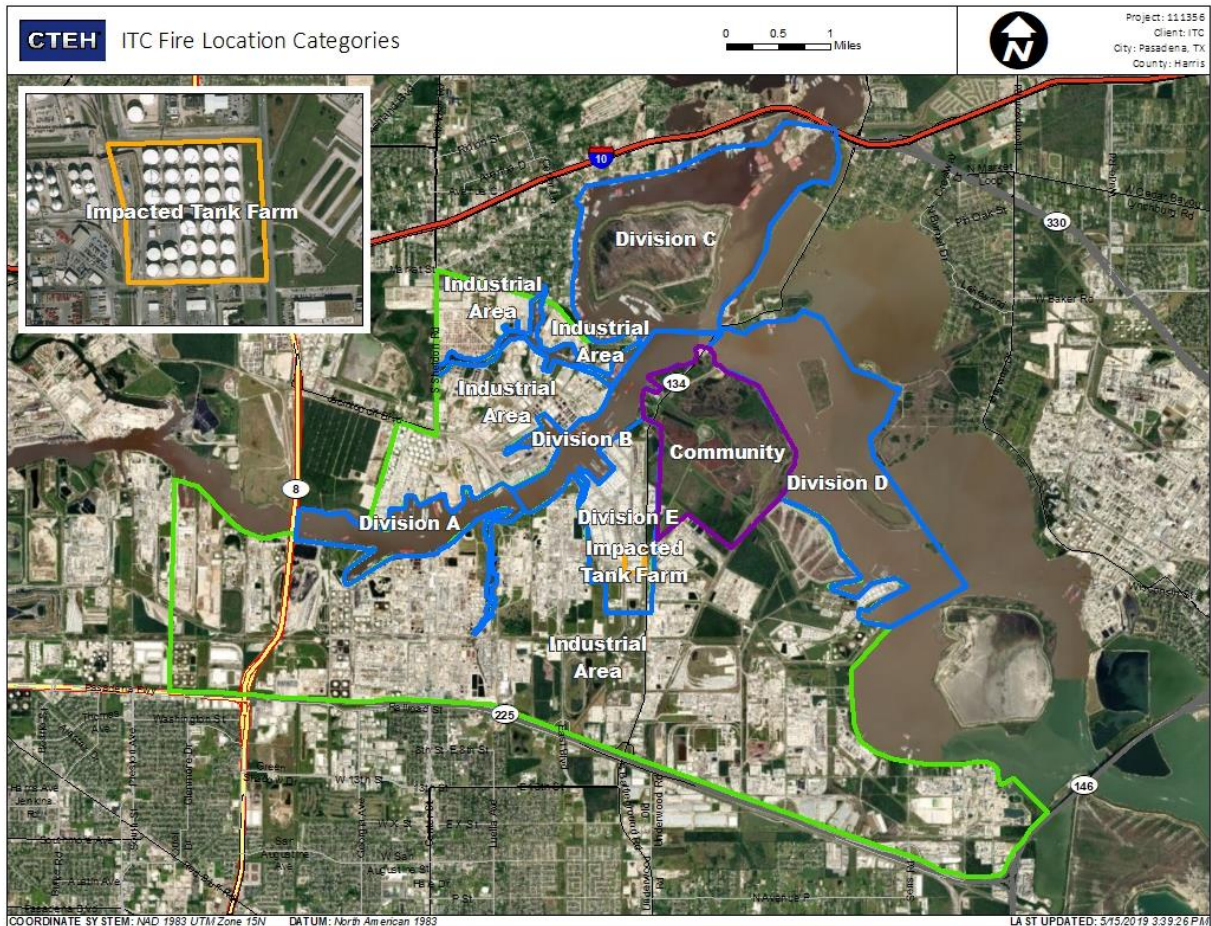


## Recent Benzene Detections

Location Category	Reading Date	Range of Detections
Division E	8/8/2019 14:09:14	0.2800 ppm
	8/8/2019 14:03:21	0.1200 ppm
	8/8/2019 14:05:20	0.2200 ppm
	8/8/2019 14:22:25	0.3900 ppm
	8/8/2019 14:18:40	0.0600 ppm
	8/8/2019 14:12:32	0.0400 ppm
	8/8/2019 14:27:11	0.1600 ppm
	8/8/2019 14:46:27	0.3000 ppm
	8/8/2019 14:42:27	0.3800 ppm
	8/8/2019 14:52:42	0.1500 ppm



This data has been provided expeditiously to ITC and regulatory agencies for informational and/or operational purposes only. Data reported within this summary is preliminary in nature and has not undergone complete QA/QC (quality assurance/quality control) process. Until this complete QA/QC process is completed, the locations of each reading are approximate in nature and subject to further refinement. As some readings may represent non-brea..



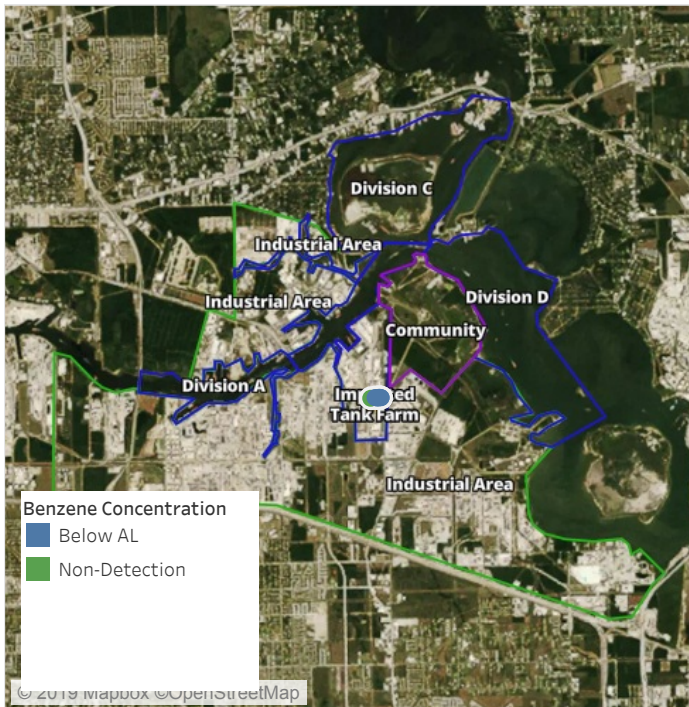
**Please Note:** These updates display data from the 2<sup>nd</sup> 80's Fire site (Impacted Tank Farm), in the industrial areas surrounding the 2<sup>nd</sup> 80's Fire site (US Coast Guard Division E), within the Houston Ship Channel (US Coast Guard Divisions A-D), and in the industrial areas north and south of the Houston Ship Channel (Industrial Area). Real-time air monitoring data for the surrounding communities are communicated daily in a separate report.



# Preliminary Hand- Held Air Monitoring Locations | ITC Deer Park Tank Fire

Reading Date

8/8/2019 3:00:00 PM to 8/8/2019 4:00:00 PM

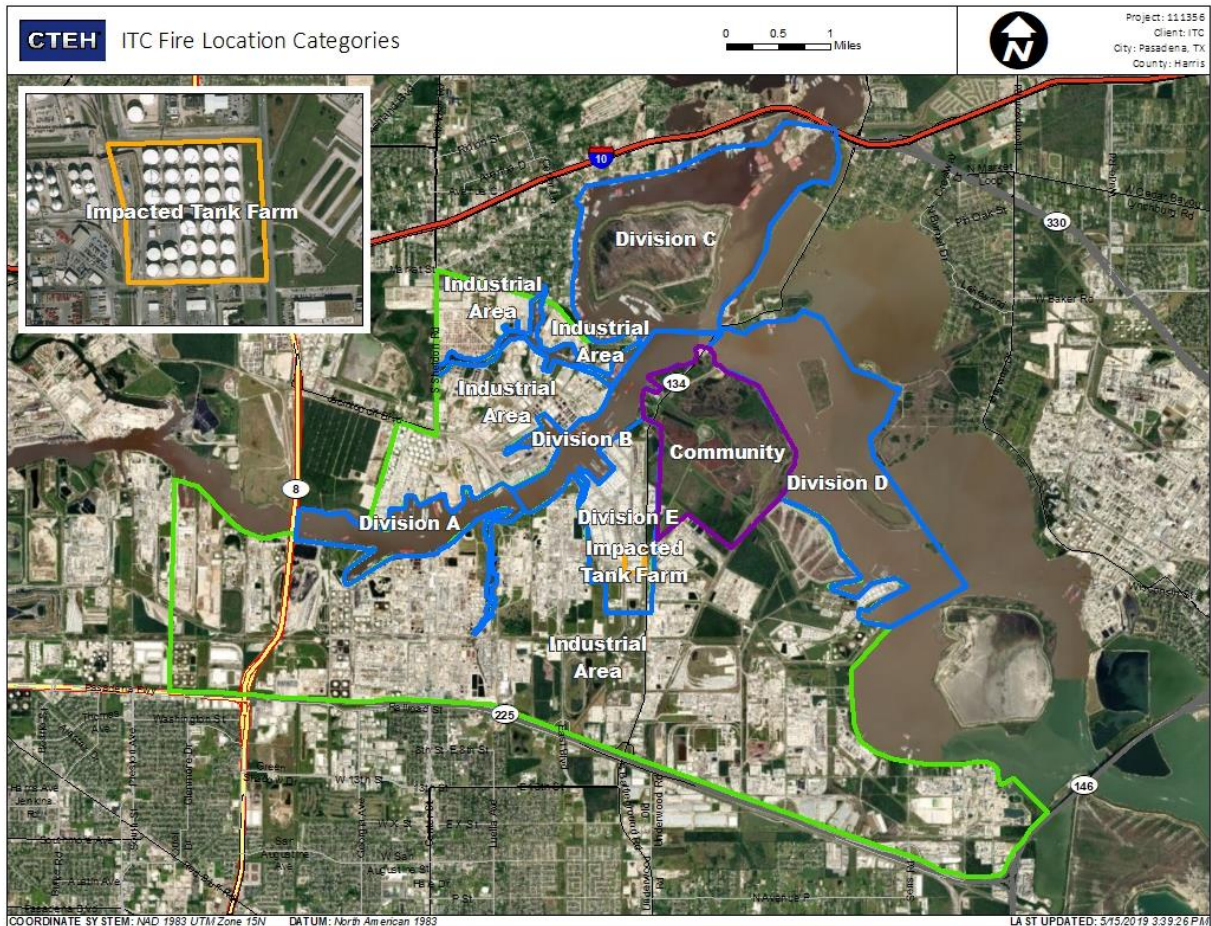


## Recent Benzene Detections

Location Category	Reading Date	Range of Detections
Division E	8/8/2019 15:17:32	0.1000 ppm
	8/8/2019 15:11:08	0.0800 ppm
	8/8/2019 15:19:25	0.1400 ppm
	8/8/2019 15:30:57	0.0500 ppm
	8/8/2019 15:08:06	0.3300 ppm
	8/8/2019 15:28:25	0.1300 ppm
	8/8/2019 15:20:45	0.3200 ppm
	8/8/2019 15:39:44	0.1600 ppm
	8/8/2019 15:49:25	0.0600 ppm



This data has been provided expeditiously to ITC and regulatory agencies for informational and/or operational purposes only. Data reported within this summary is preliminary in nature and has not undergone complete QA/QC (quality assurance/quality control) process. Until this complete QA/QC process is completed, the locations of each reading are approximate in nature and subject to further refinement. As some readings may represent non-brea..



**Please Note:** These updates display data from the 2<sup>nd</sup> 80's Fire site (Impacted Tank Farm), in the industrial areas surrounding the 2<sup>nd</sup> 80's Fire site (US Coast Guard Division E), within the Houston Ship Channel (US Coast Guard Divisions A-D), and in the industrial areas north and south of the Houston Ship Channel (Industrial Area). Real-time air monitoring data for the surrounding communities are communicated daily in a separate report.



**Reading Date**

8/8/2019 4:00:00 PM to 8/8/2019 5:00:00 PM

**Benzene Action Level Concentration (ppm)**

■ >=1

■ >=2

**PRELIMINARY**

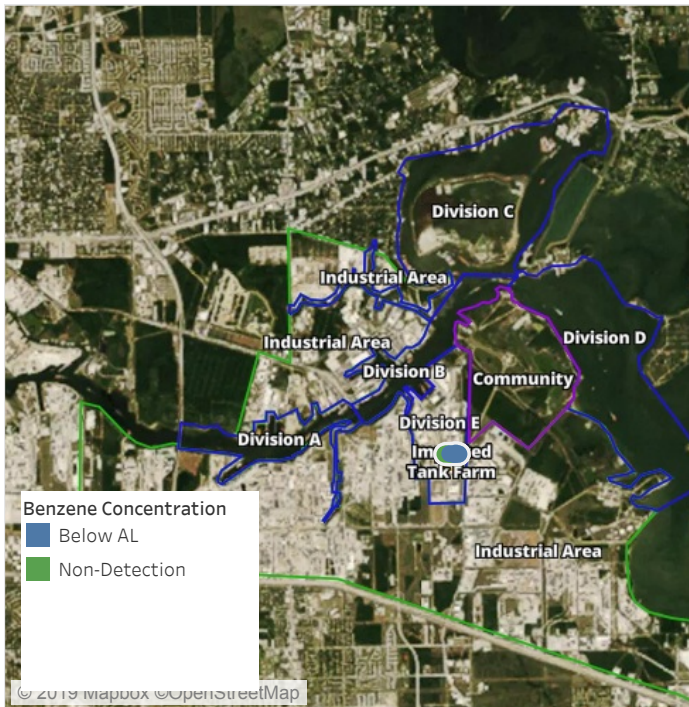
Recent Benzene Detections Greater than 1.00 ppm

Reading Date	Location Category	GPS	Google Maps URL	Range of Detections
8/8/2019 16:25:51	Division E	29.7332610,-95.0911260	<a href="https://www.google.com/maps/search/?api=1&amp;query=29.7332610,-95.0911260">https://www.google.com/maps/search/?api=1&amp;query=29.7332610,-95.0911260</a>	3.460 ppm
8/8/2019 16:21:25	Division E	29.7332710,-95.0911900	<a href="https://www.google.com/maps/search/?api=1&amp;query=29.7332710,-95.0911900">https://www.google.com/maps/search/?api=1&amp;query=29.7332710,-95.0911900</a>	1.330 ppm

# Preliminary Hand- Held Air Monitoring Locations | ITC Deer Park Tank Fire

Reading Date

8/8/2019 5:00:00 PM to 8/8/2019 6:00:00 PM



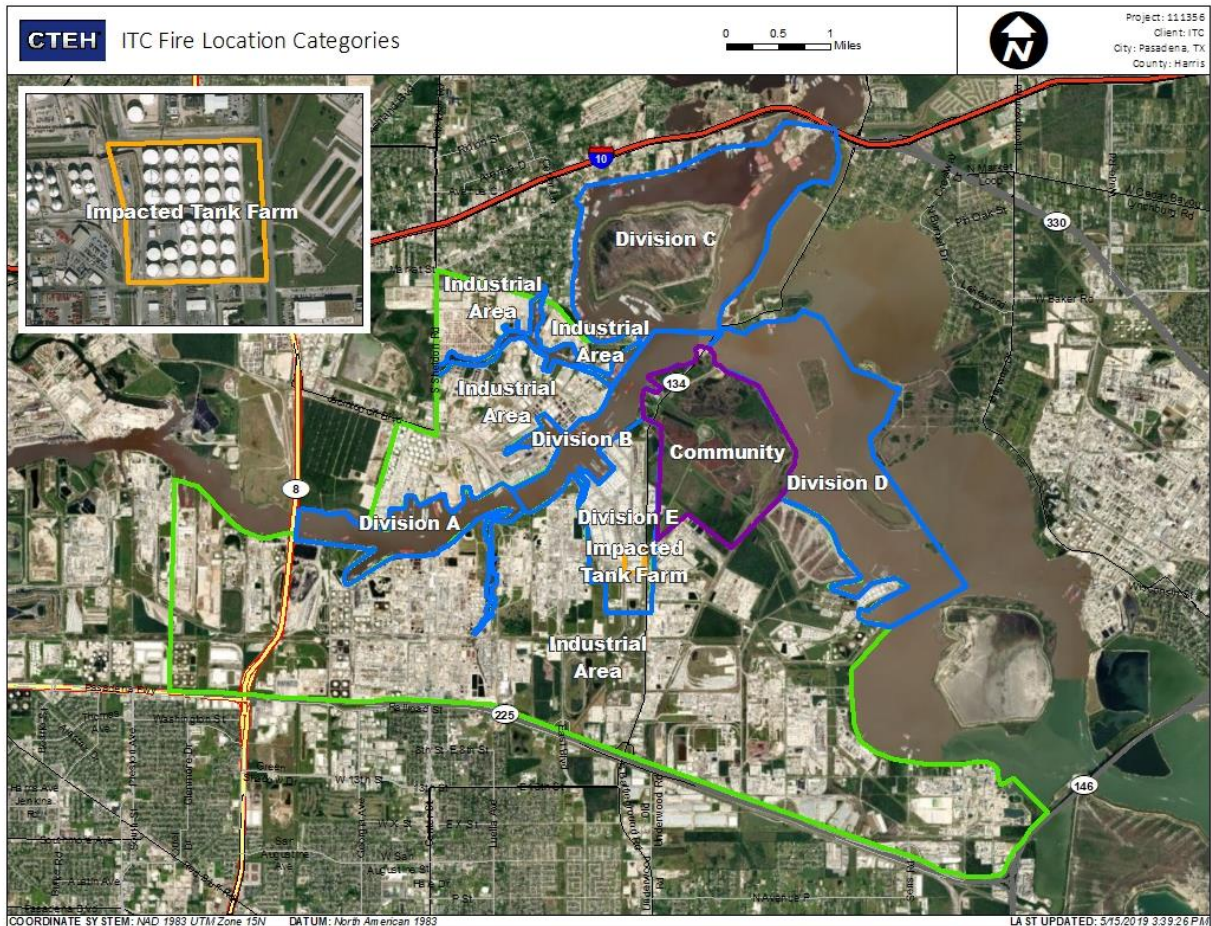
## Recent Benzene Detections

Location Category	Reading Date	Range of Detections
Division E	8/8/2019 17:05:53	0.1000 ppm
	8/8/2019 17:04:35	0.1100 ppm
	8/8/2019 17:02:12	0.1600 ppm
	8/8/2019 17:09:26	0.3400 ppm
	8/8/2019 17:15:44	0.0600 ppm
	8/8/2019 17:30:21	0.0300 ppm
	8/8/2019 17:32:30	0.0500 ppm
	8/8/2019 17:56:32	0.0400 ppm



This data has been provided expeditiously to ITC and regulatory agencies for informational and/or operational purposes only. Data reported within this summary is preliminary in nature and has not undergone complete QA/QC (quality assurance/quality control) process. Until this complete QA/QC process is completed, the locations of each reading are approximate in nature and subject to further refinement. As some readings may represent non-brea..





**Please Note:** These updates display data from the 2<sup>nd</sup> 80's Fire site (Impacted Tank Farm), in the industrial areas surrounding the 2<sup>nd</sup> 80's Fire site (US Coast Guard Division E), within the Houston Ship Channel (US Coast Guard Divisions A-D), and in the industrial areas north and south of the Houston Ship Channel (Industrial Area). Real-time air monitoring data for the surrounding communities are communicated daily in a separate report.