



Upper San Antonio River Watershed Protection Plan Implementation

River Basin: San Antonio River

Water Body: Upper San Antonio River (Segment 1911)

Location: Bexar County, San Antonio

Background

Since 2000, portions of the Upper San Antonio River have not met state water quality standards for bacteria. In 2006, the San Antonio River Authority (SARA) completed the Upper San Antonio River Watershed Protection Plan (WPP), and in 2007 TCEQ adopted a total maximum daily load addressing this segment. The WPP recommends a 30% reduction in bacteria loading from stormwater to bring the river into compliance with state water quality standards and recommends implementing low impact development (LID), a best management practice (BMP) for reducing stormwater pollution. Three projects incorporate such BMPs in the watershed.

Project Descriptions

September 2015 – February 2018

SARA completed LID retrofits, including bioretention cells and rain cisterns, at two of their properties to demonstrate the feasibility of LID projects in heavily urbanized areas. SARA also conducted storm event monitoring to test the performance of BMPs.

September 2018 – August 2021

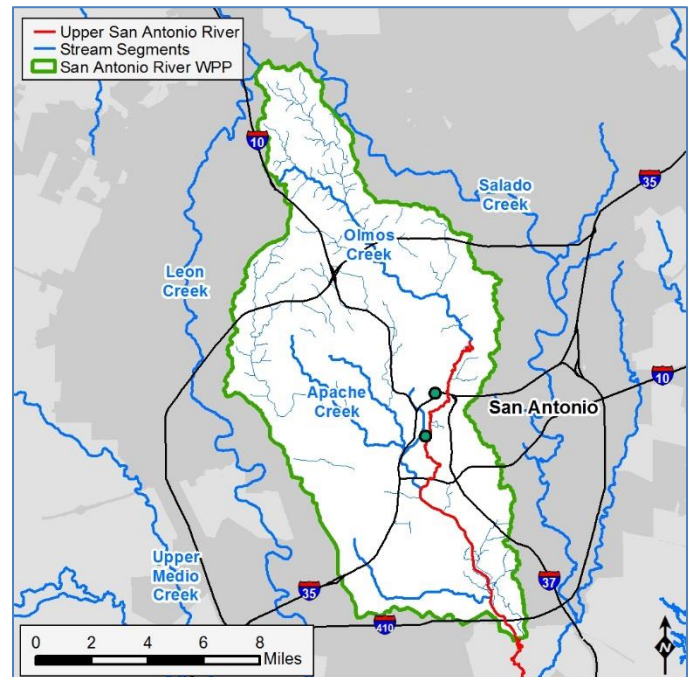
SARA is also developing a master plan for the use of green stormwater infrastructure (GSI). The plan will use stakeholder input to develop goals and investment priorities for implementation and will recommend BMPs for achieving enhanced water quality and quantity and how to maximize those benefits.

SARA's watershed scale models identified sub-basins with the highest potential pollutant loads which will be used to prioritize sites with the highest potential for effective GSI implementation. The completed GSI Master Plan can become a template for implementation in other watersheds.

October 2019 – August 2022

The Southwest Research Institute (SWRI) is

retrofitting large-scale LID at their San Antonio facility to treat runoff. SWRI will also partner with the Texas Manufacturing Assistance Center to offer a stormwater management course and LID seminars for small manufacturers. The SWRI LID installation process and lessons learned will be used in these programs.



This map was developed by the Nonpoint Source program of TCEQ. No claims are made to the accuracy or completeness of the data or to its suitability for a particular use. For more information concerning this map contact nps@tceq.texas.gov.

For More Information

TCEQ NPS Program

nps@tceq.texas.gov

SARA Project Managers

Aarin Teague

210.302.3660; ateague@sara-tx.org

Michelle Garza

210.302.3265; megarza@sara-tx.org

SWRI Project Manager

Michael Lewis

210.522.3533; michael.lewis@swri.org