



Texas Commission on Environmental Quality Nonpoint Source Program

Texas Stream Team Program: Statewide Volunteer Monitoring

Location: statewide

Background

Texas Stream Team (TST), directed by Texas State University's Meadows Center for Water and the Environment, is an on-going state program. TST coordinates a network of partner organizations and citizen scientists who seek to increase the public's knowledge of water quality and nonpoint source pollution across the state through water quality monitoring, data collection and analysis, and related educational programs. The TST program is being implemented via three concurrent contracts with TCEQ.

Project Descriptions

March 2018 - August 2023

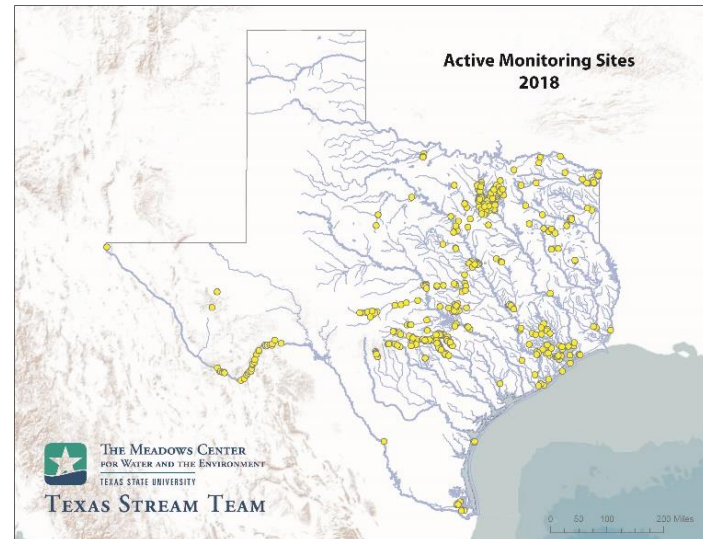
TST engages a statewide network of citizen scientists who are trained to monitor the water quality of their local lakes, rivers, streams, and estuaries at assigned sites. Each year these volunteers monitor hundreds of water quality sites, and the information they collect is submitted to a database containing over 23 years of data maintained by The Meadows Center. Volunteer monitoring can help identify areas with water quality concerns for water resource managers to address, and long-term monitoring can be used to assess the effectiveness of best management practices.

TST promotes a variety of watershed services to communities that have complete and approved Watershed Protection Plans and Total Maximum Daily Loads. Services include assisting water quality data collection and analysis and providing TST programming and information regarding matching/in-kind funds.

TST also provides watershed education to at least 4,000 people annually on topics including nonpoint source pollution and water conservation and management.

TST will continue managing, expanding, and strengthening their statewide citizen science network by working with partners and established groups, creating new partner

networks and citizen scientist groups, expanding the role of citizen scientists in Texas, and educating the public, students, volunteers, and resource managers about watersheds, water quality, and nonpoint source pollution.



This map was developed by the Nonpoint Source program of TCEQ. No claims are made to the accuracy or completeness of the data or to its suitability for a particular use. For more information concerning this map contact nps@tceq.texas.gov.

For More Information

Project Website

meadowscenter.txstate.edu/Leadership/TexasStreamTeam.html

TCEQ NPS Program

nps@tceq.texas.gov

Texas Stream Team

512.245.1346; TxStreamTeam@txstate.edu