



Texas Commission on Environmental Quality Nonpoint Source Program

Brady Creek Watershed Protection Plan Implementation

River Basin: Colorado River
Water Body: Brady Creek (Segment 1416A)
Location: Brady and McCulloch Counties

Background

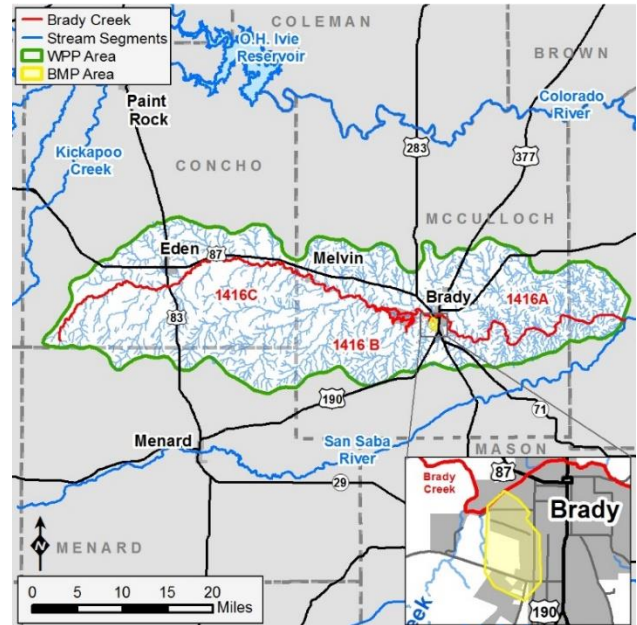
Brady Creek, an unclassified water body and a tributary of the San Saba River, has not met state water quality standards for dissolved oxygen (D.O.) since 2004. The Upper Colorado River Authority (UCRA) and watershed stakeholders developed the Brady Creek Watershed Protection Plan (WPP) which was accepted by the U.S. Environmental Protection Agency in 2016. The WPP identifies best management practices (BMPs) to increase flow, reduce the amount pollutants entering Brady Creek and raise dissolved oxygen to a level that supports the segment's assigned aquatic life use criteria.

Project Descriptions

UCRA will implement two of the BMPs in the Brady Creek WPP - a vortex hydrodynamic separator and an education and outreach program.

Vortex hydrodynamic separators are flow through structures used to remove sediment and other pollutants in stormwater. UCRA will install a separator in Sub basin I, the largest contributor of urban runoff in the watershed. Based on modelling conducted during WPP development, installation of one separator in this sub basin will reduce total suspended sediment and biological oxygen demand loadings by 44%. Experience gained from this project will be valuable in the planning and design process for sub basins that require multiple vortex separators.

UCRA will also develop an education and outreach program to increase community awareness of water quality issues and the benefits of improving and protecting water quality. They will provide residents with information encouraging the implementation of the Brady Creek WPP. This nonstructural BMP is critical to the overall success of the depressed D.O. mitigation strategy.



This map was developed by the Nonpoint Source program of TCEQ. No claims are made to the accuracy or completeness of the data or to its suitability for a particular use. For more information concerning this map contact nps@tceq.texas.gov.

For More Information

TCEQ NPS Program
nps@tceq.texas.gov

UCRA Project Manager
Scott McWilliams
325.655.0565; scottm@ucratx.org