



## Developing a Watershed Protection Plan Big Elm Creek

|                       |                                             |
|-----------------------|---------------------------------------------|
| <b>Water Body</b>     | Big Elm Creek (Segment 1213A)               |
| <b>Location</b>       | Bell and Milam Counties                     |
| <b>River Basin</b>    | Brazos (12)                                 |
| <b>Contractor</b>     | Texas Water Resources Institute (TWRI)      |
| <b>Project Period</b> | September 1, 2018 to August 31, 2020        |
| <b>Project Total</b>  | \$266,667 (Federal 60% and Local Match 40%) |

### Background

Big Elm Creek (AU 1213A\_01) was first identified as impaired for primary contact recreation due to excessive E. coli bacteria in the 2010 Texas Integrated Report. In addition to the contact recreation impairment, a “Use Concern” exists in Little Elm Creek (AU 1213B\_01), a tributary to Big Elm Creek, for dissolved oxygen. Screening concerns for nitrate (AU 1213B\_01 and AU 1213C\_01) and habitat (AU 1213C\_01) are also present. A watershed characterization for Big Elm Creek was completed in a previous project.

### Project Description

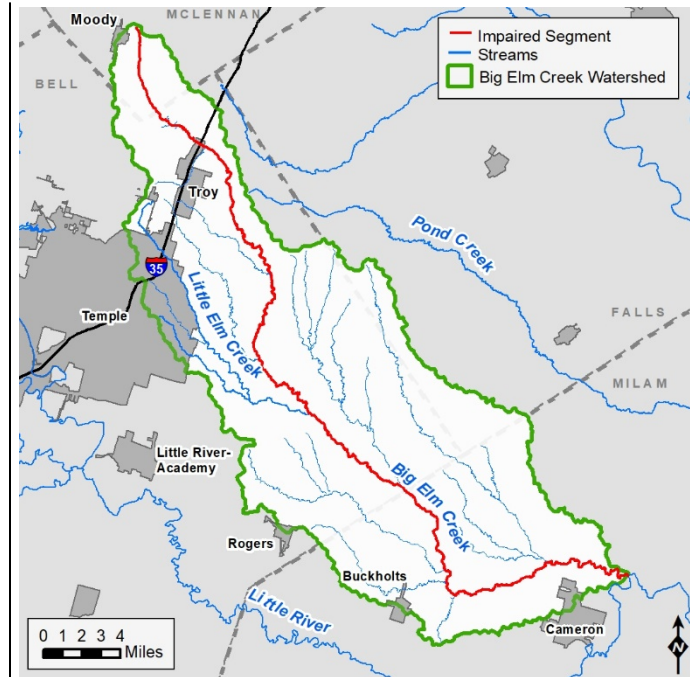
This project will build on an existing watershed characterization project for the larger Little River watershed. Data produced under the watershed characterization will support the development of a watershed protection plan (WPP) for Big Elm Creek. Data from the characterization will also assist stakeholders in choosing management measures and determine load reductions in the watershed. This WPP project will build upon existing stakeholder involvement, surveys, and outreach that was initiated during the watershed characterization process.

### Current Status

WPP stakeholder meetings to solicit public input are underway. Modeling will begin after QAPP execution.

### Public Participation

Stakeholder participation is key to developing and implementing a well-rounded WPP. A website will be developed to announce upcoming stakeholder meetings and education programs.



### For More Information

#### TCEQ Project Manager

Jessica Uramkin  
512.239.6685; [Jessica.uramkin@tceq.texas.gov](mailto:Jessica.uramkin@tceq.texas.gov)

#### TWRI Project Manager

Ed Rhodes  
979.458-5663; [Edward.rhodes@agnet.tamu.edu](mailto:Edward.rhodes@agnet.tamu.edu)

---

## Project Highlights

- 09/2018 Project began.
- 01/2019 QAPP under development.
- 02/2019 Stakeholder meeting held in Rogers, TX.