



## Cypress Creek Watershed Protection Plan Implementation

**River Basin:** Guadalupe  
**Water Body:** Cypress Creek (Segment 1815)  
**Location:** City of Wimberley

### Background

Although Cypress Creek meets all state water quality standards, local stakeholders are concerned that urbanization in the watershed could negatively impact water quality. In 2010, a stakeholder group developed the Cypress Creek Watershed Protection Plan (WPP) which the U.S. Environmental Protection Agency accepted in 2015. To minimize nonpoint source pollution, the WPP identifies best management practices that implement low impact development (LID) such as rain gardens and rainwater harvesting systems to control stormwater and reduce pollutants entering the waterways. Two projects in the watershed are implementing WPP measurements.

### Project Descriptions

#### August 2016 – February 2020

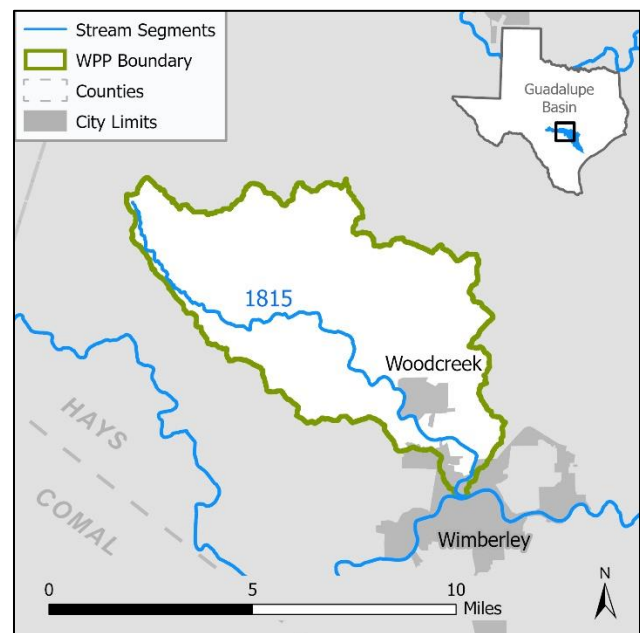
The Meadows Center for Water and the Environment implemented years one through three of the WPP implementation schedule. They reviewed the effectiveness of city and county ordinances in protecting and improving water quality and recommended ordinance updates and future projects to improve stormwater quality.

The Meadows Center installed four rainwater harvesting systems and four permeable pavement sites to demonstrate the effectiveness of LID. They also established an accelerated review process of development proposals to increase LID implementation and provided technical assistance in reviews. The Meadows Center and the stakeholder committee reviewed the project's progress annually and updated the WPP to incorporate recommended changes.

#### December 2019 – August 2022

The Meadows Center is implementing years four through six of the WPP implementation schedule. They will implement a watershed wide education and outreach program in

coordination with the watershed executive and stakeholder committees. This program will include seven targeted community workshops, a speaker series, signage for sensitive areas, digital newsletters, and project website updates. They will also complete another WPP update at the end of the project.



This map was developed by the Nonpoint Source Program of TCEQ. No claims are made as to the accuracy or completeness of the data or its suitability for a particular use. For more information concerning this map, contact [nps@tceq.texas.gov](mailto:nps@tceq.texas.gov).

### For More Information

#### Project Webpage

[www.cypresscreekproject.net](http://www.cypresscreekproject.net)

#### TCEQ NPS Program

[nps@tceq.texas.gov](mailto:nps@tceq.texas.gov)

#### Meadows Center Project Manager

Nick Dornak

512-245-6697

[nickdornak@txstate.edu](mailto:nickdornak@txstate.edu)

April 2021