

# **Current Status of the Texas Integrated Report (IR) for Clean Water Act Sections 305(b) and 303(d)**

**Water Quality Planning Division  
Monitoring & Assessment Section  
Surface Water Quality Monitoring Program (SWQM)**

# Background

- Statewide assessment of the status of state waters
  - Compares water quality data to approved water quality standards
  - Identifies impaired waters (303(d) List)
- Requirements
  - Federal Clean Water Act, Sections 305(b) and 303(d)
  - Title 30 of the Texas Administrative Code (30 TAC)
- Conducted every two years
  - Draft due to EPA on April 1 of even numbered years

# Integrated Report (IR) - Process

- Develop Guidance
- Assemble\Compile Data
- Update Assessment Tools
- Develop Draft Reports
- Solicit Public Comment
- Revise Draft Documents
- TCEQ Approval
- EPA Approval – IR considered draft until EPA approval

# Integrated Report Documents

- Executive Summary
- Guidance for Assessing and Reporting Surface Water Quality in Texas
- 303(d) List (Category 5)
- Delistings
- New Listings
- Schedule to Develop TMDLs for Category 5a Water Bodies
- Water Quality Concerns
- Sources of Pollution for Impairments and Concerns
- Public Comment and Response
- Water Body Assessments by River Basin
- Cost/Benefit Assessment
- Trophic Assessment of Texas Reservoirs

# Integrated Report Documents (cont)

- Electronic data files summarizing the assessment results for EPA's Assessment Database
- Index of Water Quality Impairments
- Water Bodies Evaluated
- Five-part categorization of waters
- Water Body Assessments by River Basin
- Changes to the Draft Following Public Comments
- Water Pollution Control Program
- Monitoring Program
- Statistically-Based Monitoring in Texas
- Water Quality Inventory Summary of Uses
- Texas Groundwater Assessment

# 2014 Integrated Report – Timeline

- Guidance Advisory Workgroup June 6, 2013
- Data Provider Review – Sept. 30, 2014 – Oct. 31, 2014
- Public Comment - Dec. 19, 2014 – Feb. 2, 2015
- TCEQ Adoption – June 3, 2015
- Current Status - EPA review

# 2014 Revised Procedures

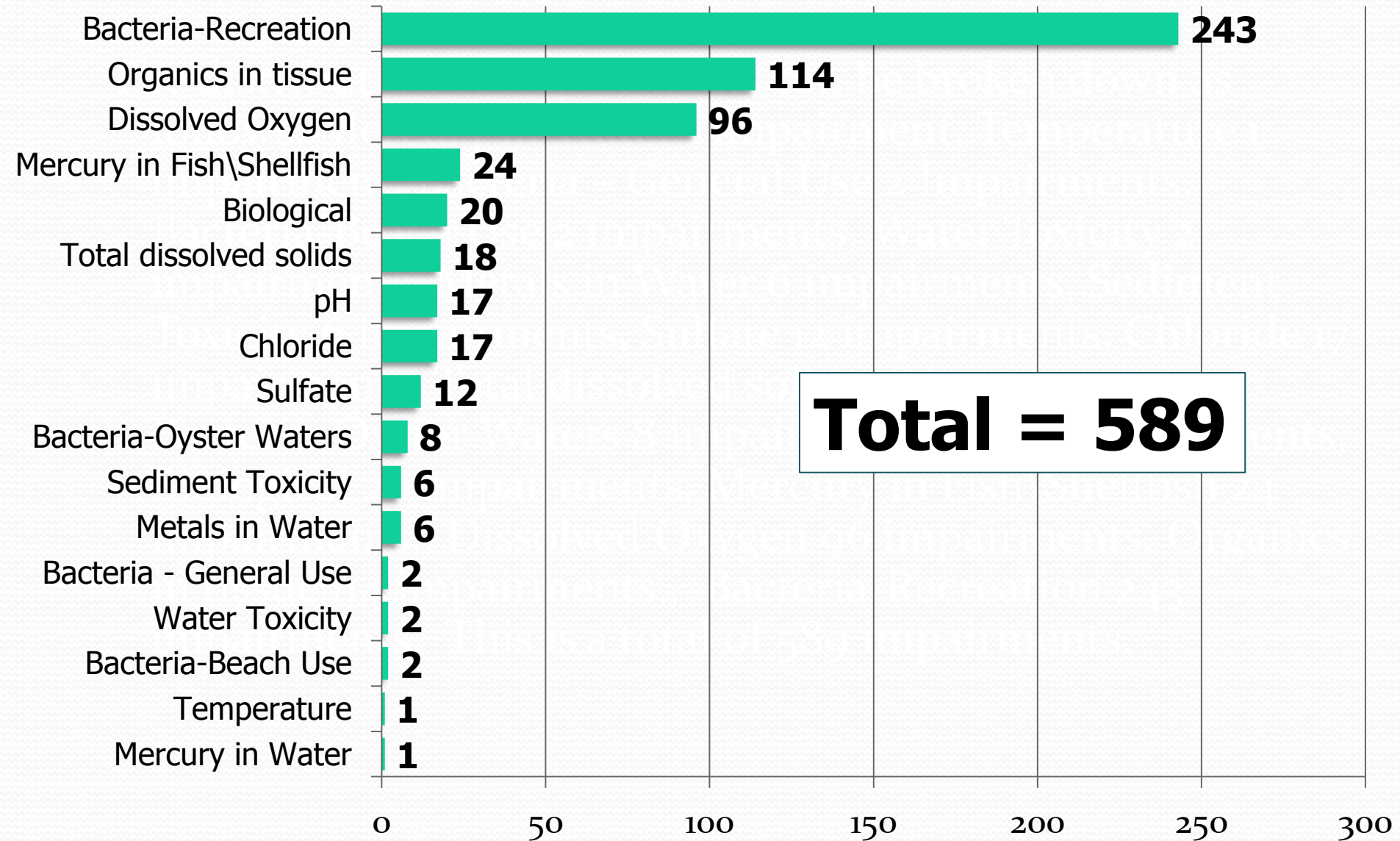
- Drought Considerations
- Watershed Protection Plan Data
- Oyster Waters Assessments
- Fecal Coliform Assessments

# 2014 Additional Considerations

- Including new water bodies
- Assigning categories
  - Including recommendations from Watershed Action Planning Process



# Draft 2014 Impairments



## Segments Added and Removed from 2014 303(d) List







Protecting Texas by  
Reducing and  
Preventing Pollution

Texas Commission on Environmental Quality  
Surface Water Quality Monitoring Program  
Mail Code 165  
Post Office Box 13087  
Austin, Texas 78711-3087

0 45 90 180 Miles  
0 65,000 130,000 260,000 Meters

Texas Statewide Mapping System (TSMs) Projection

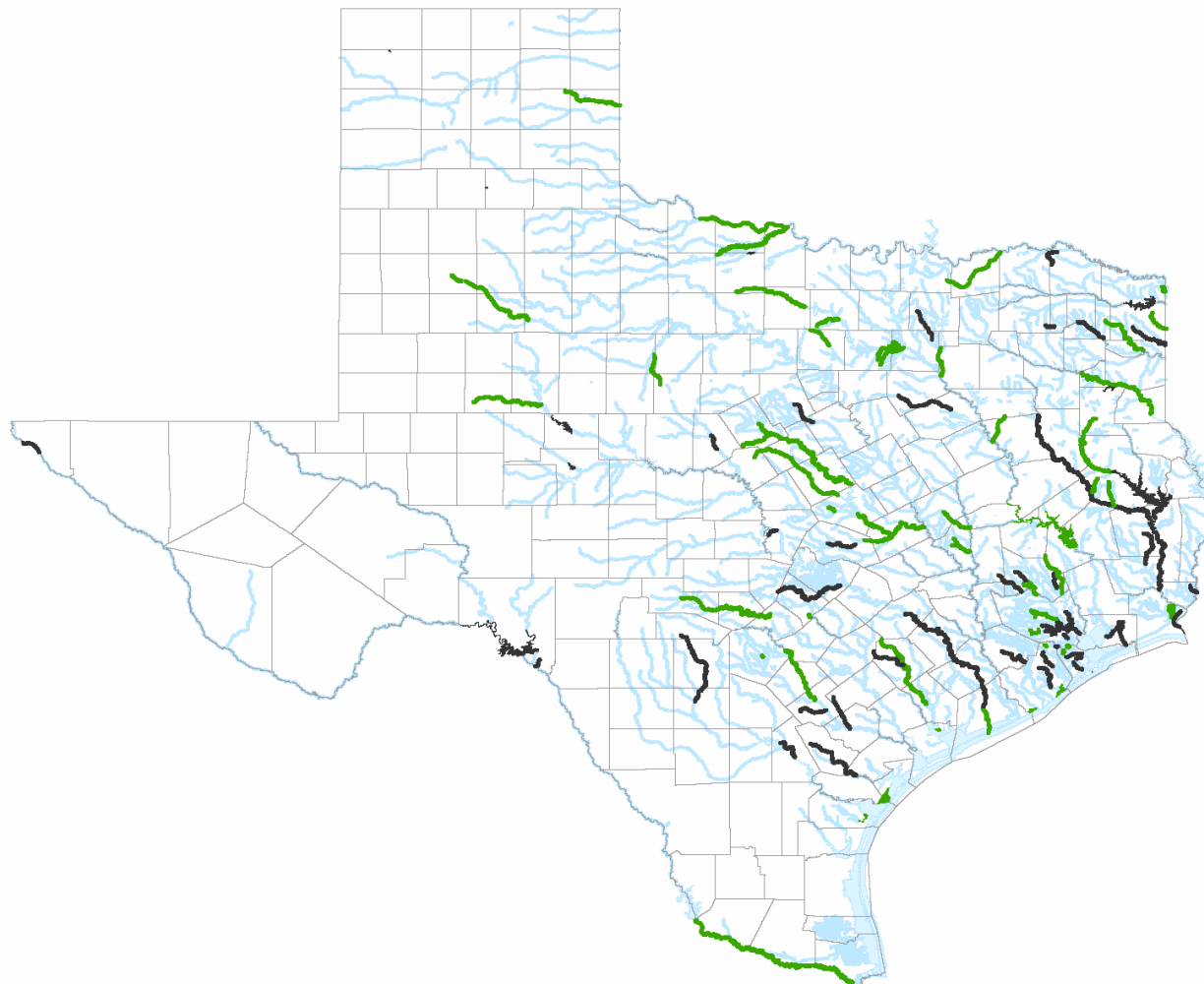
### Legend

-  Segments Removed
-  Segments Added
-  All Segments
-  County Boundaries

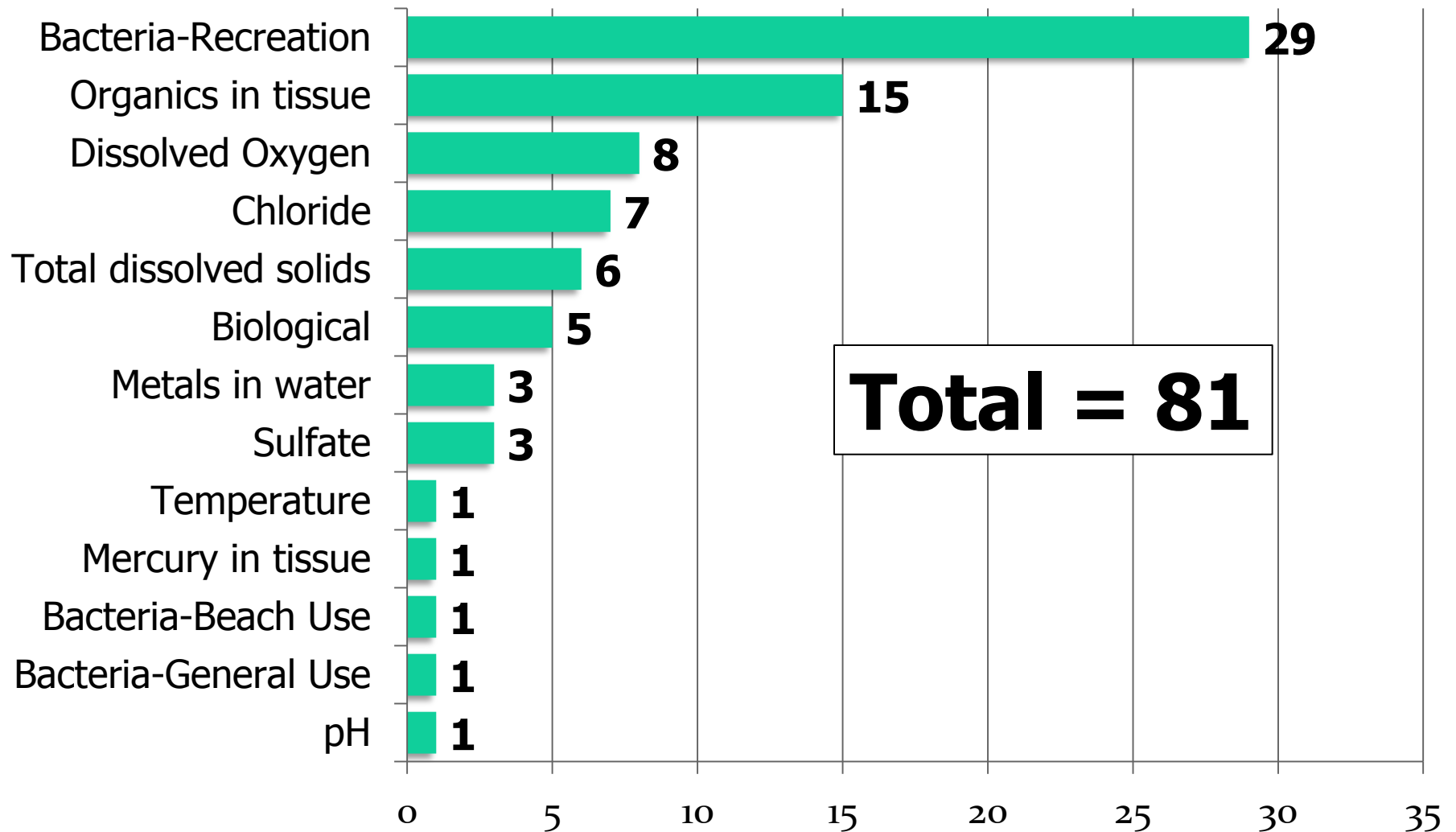


Map Created on June 3, 2015

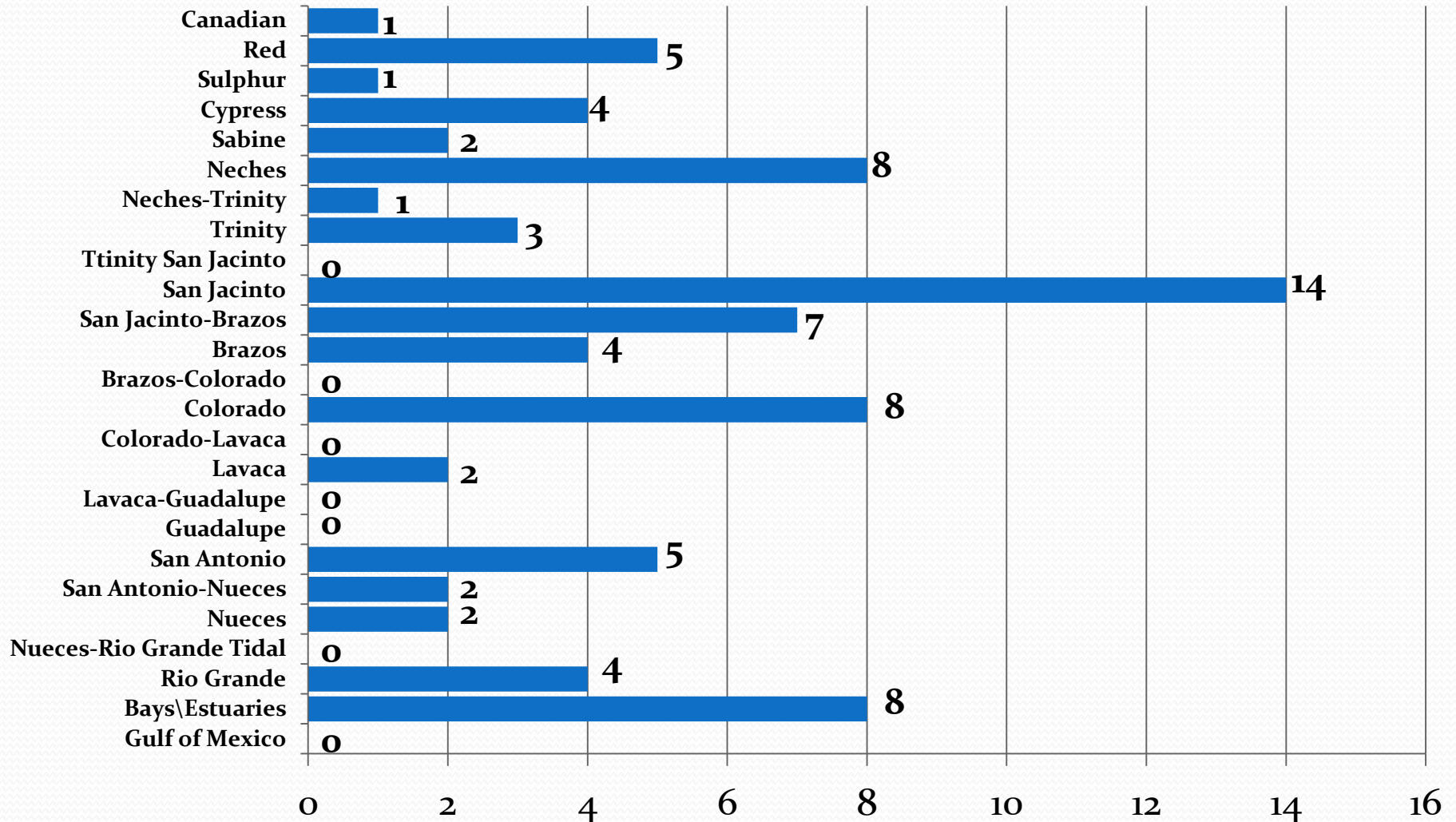
This map was edited by the Surface Water Quality Monitoring Team of the Texas Commission on Environmental Quality. No claims are made to the accuracy or completeness of the data or to its suitability for a particular use. For more information concerning this map, contact Daniele Baker, SWQM Program, at (512) 239-1740 or send an e-mail to [Daniele.Baker@tceq.texas.gov](mailto:Daniele.Baker@tceq.texas.gov)



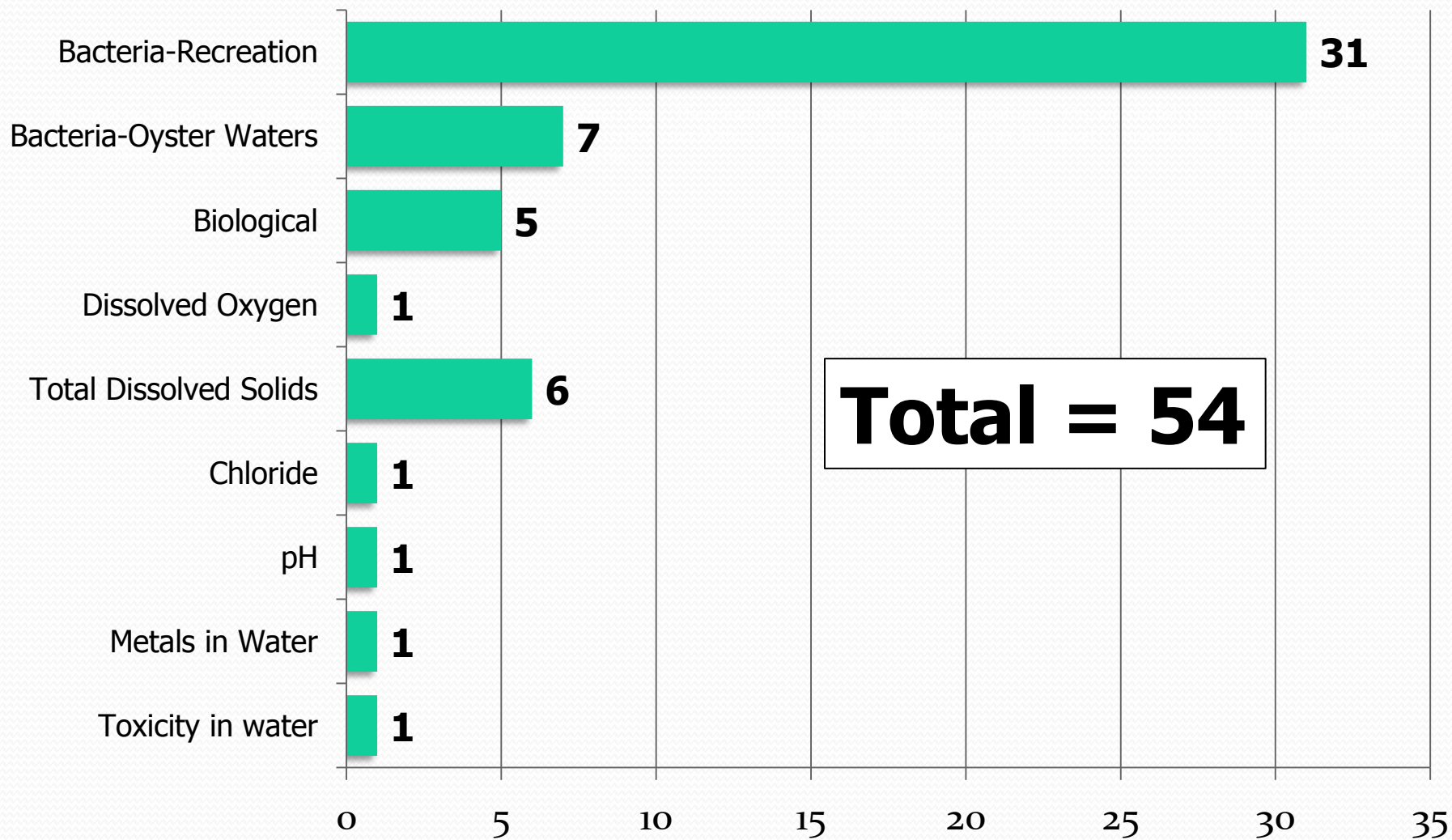
# Draft 2014 New Impairments



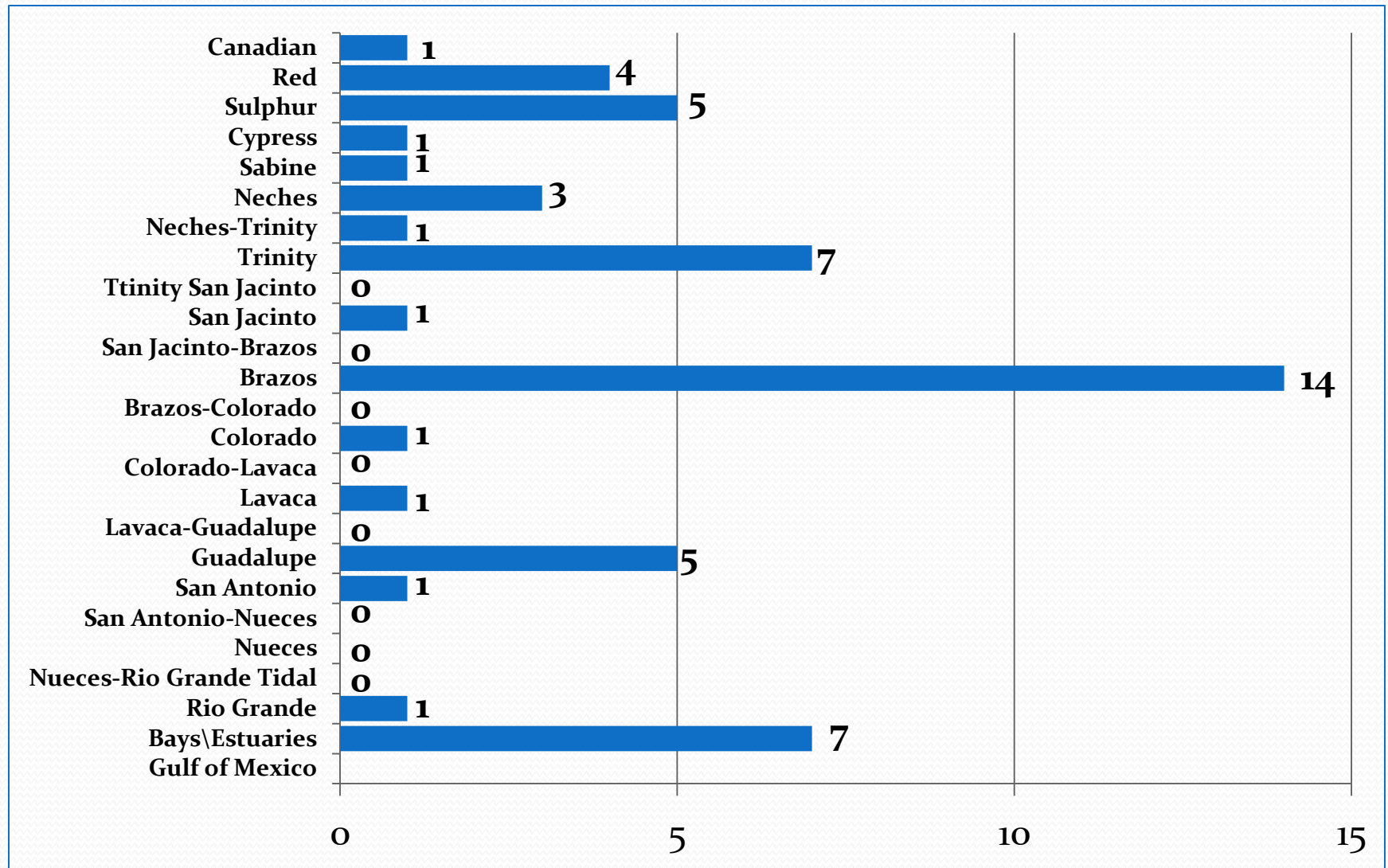
# Draft 2014 New Impairments by Basin



# Draft 2014 Delistings



# Draft 2014 Delisted Impairments by Basin



# Impairment Changes 2012-2014

Parameter	2012 Impairments	2014 Impairments	Change
Bacteria in water	257	243	-14
Bacteria in shellfish	15	8	-7
Temperature	0	1	1
Biological	19	20	1
Mercury in fish/shellfish	23	24	1
Metals in water	4	6	2
Sulfate	9	12	3
Total dissolved solids	14	18	4
Dissolved oxygen	90	96	6
Chloride	11	17	6
Organics in fish/shellfish	99	114	15

# Changes in Impairment Status

- Decreases
  - Bacteria - Recreational Use
  - Bacteria – Shellfish
- Increases
  - Dissolved Solids
  - Organics in fish\shellfish



# Revised Procedures\Updates

- Nutrient Assessments
- Drought Considerations
- 303(d) Vision
- WQS Updates
- Period of Record
  - December 1, 2007 to November 30, 2014

# Approximate Timeline

- Advisory Workgroup Meeting – July 27, 2015
- GIS Updates and Assessment – Summer\Fall
- Data Providers Coordination - Fall
- Public Comments - Winter
- TCEQ Agenda - early Spring
- Submit Draft to EPA – April 1, 2016

# Additional Information

- 2014 Integrated Report
  - [https://www.tceq.texas.gov/waterquality/assessment/public\\_comment](https://www.tceq.texas.gov/waterquality/assessment/public_comment)
- Andrew Sullivan, SWQM Team
  - [andrew.sullivan@tceq.texas.gov](mailto:andrew.sullivan@tceq.texas.gov)
  - (512) 239-4587