



Improving Water Quality in the Lower West Fork Trinity River A TMDL Implementation Project for Bacteria

Bacteria concentrations are occasionally elevated in portions of the Lower West Fork Trinity River (Segment 0841) and its tributaries that flow through Arlington, Irving, and Grand Prairie. High concentrations of bacteria may pose a risk to people who swim or wade in them—activities called the “contact recreation use” in the state’s standards for water quality.

Bacteria are commonly found in the intestines of warm-blooded organisms such as humans, livestock, poultry, cats, and dogs. These bacteria in water sometimes indicate the presence of disease-causing microorganisms.

To address these concerns, people who have a stake in the watershed worked with the TCEQ to develop a total maximum daily load (TMDL) and its implementation plan (I-Plan). A TMDL is like a budget—it determines the amount (or load) of bacteria a stream can receive and still support the recreational use. The allowable load is then allocated among categories of sources within the watershed. The I-Plan outlines the measures that will be used to reduce pollution.

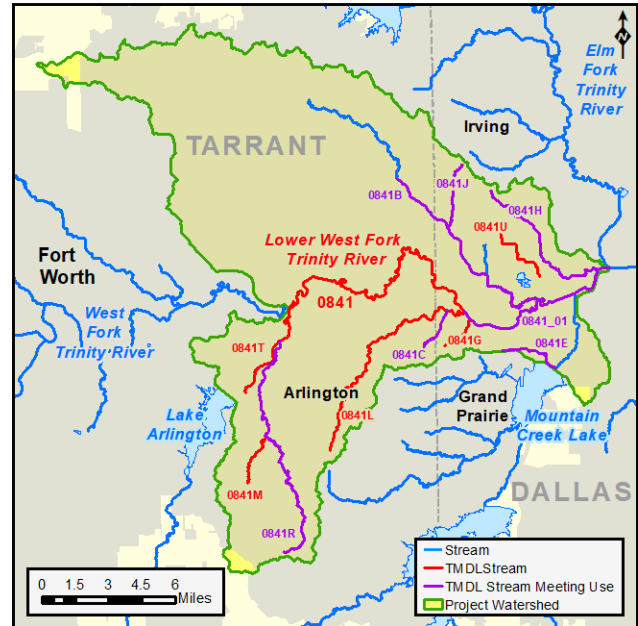
Learn more about water quality standards and monitoring, and TMDLs by reading *Preserving and Improving Water Quality*, available on our website at www.tceq.texas.gov/goto/tmdl/.

Project Watershed

The Lower West Fork Trinity, Segment 0841, flows from a point immediately upstream of its confluence with Village Creek in Tarrant County to immediately upstream of its confluence with the Elm Fork Trinity River in Dallas County.

This project addresses bacteria impairments in Segment 0841 and several of its tributaries (see table). The project watershed covers approximately 261 square miles in densely populated Dallas and Tarrant counties. To varying degrees, stormwater runoff from agricultural, industrial, and urban areas affects water quality in the segments.

Segment	Location
0841B, Bear Creek	From confluence with West Fork Trinity River, to the confluence of Big Bear and Little Bear Creek just upstream of HWY 183 in Euless, Tarrant County, TX



Segment	Location
0841C, Arbor Creek	From confluence with Johnson Creek upstream to Duncan Perry Road in Grand Prairie
0841E, Copart Branch Mountain Creek	From confluence with unnamed oxbow (NHD RC 12030102044758) to approximately 0.3 miles upstream of Camden Road on the former Dallas Naval Air Station property, Dallas County
0841G, Dalworth Creek	From confluence with Lower West Fork Trinity to headwaters area just west of 22nd Street NW in Grand Prairie, Dallas County
0841H, Delaware Creek	From confluence with Lower W. Fork Trinity to Finley Road in Irving
0841J, Estelle Creek	From confluence with Bear Creek upstream to Valley View Lane in Irving, Dallas County
0841L, Johnson Creek	From confluence with the Lower West Fork Trinity River upstream to just south of Mayfield Road in Arlington, Tarrant County
0841M, Kee Branch	From confluence with Rush Creek to upper end of the creek (NHD RC 12030102000165)
0841R, Rush Creek	From confluence with Village Creek to headwater area just east of Calender Road in Arlington, Tarrant County
0841T, Village Creek	From confluence with West Fork Trinity River to SH 303 approx. 0.75 mi. downstream of Lake Arlington

Segment	Location
0841U, West Irving Branch	From approx. 0.4 mi. downstream of Oakdale Rd. to headwater area in Wyche Park (NHD RC 12030102044201) in Irving, Dallas County

TMDL Development

The TCEQ initiated this project in January 2011. Historical data review and TMDL allocation tasks were completed by the Texas Institute for Applied Environmental Research (TIAER) in 2012. The TMDLs were adopted by TCEQ on September 24, 2013 and approved by EPA on November 7, 2013.

I-Plan Development

The North Central Texas Council of Governments worked with stakeholders to convene a Coordination Committee to implement bacteria TMDLs and improve surface water quality throughout their region. The Implementation Plan for the Greater Trinity River Region was approved by TCEQ on December 11, 2013.

Public Participation

In all its projects, the TCEQ seeks to gather opinion and information from people who represent government, permitted facilities, agriculture, business, environmental, and community and private interests in the watershed. The TCEQ solicits advice and comment from the public at meetings and through print and electronic media notices. Meetings about TMDLs and I-Plans are open to everyone.

For More Information

Visit the project website at:

<www.tceq.texas.gov/waterquality/tmdl/nav/66-greatertrinitybacteria/>

or

<www.nctcog.org/envir/natural-resources/tmdl>

Or contact:

Nicole Reed, TMDL Project Manager

Headquarters – Austin

nicole.reed@tceq.texas.gov

512-239-3449

Tamara Cook, I-Plan Coordination

North Central Texas Council of Governments

tcCook@nctcog.org

817-695-9221

TMDL Adoption Dates

TCEQ Adoption: September 24, 2013

EPA Region 6 Approval: November 7, 2013

I-Plan Approval Date

TCEQ Approval: December 11, 2013

Project Highlights and Water Quality Status

- The TMDLs were adopted by TCEQ September 24, 2013 and approved by EPA on November 7, 2013.
- The Implementation Plan for the Greater Trinity River Region was approved by TCEQ December 11, 2013.
- The Coordination Committee meets annually to review the progress of the I-Plan. The I-Plan work groups meet periodically to discuss implementation strategies.
- Three streams in the Lower West Fork Trinity River TMDL watershed were found to meet the contact recreation use based on the *2012 Texas Integrated Report of Surface Water Quality* (Integrated Report). These were Bear Creek (0841B), Arbor Creek (0841C), and Copart Branch Mountain Creek (0841E).
- Two additional streams in the TMDL watershed were found to meet the contact recreation use based on the 2016 Texas Integrated Report. These were Lower West Fork Trinity River (0841_01) and Delaware Creek (0841H).
- Two more streams were found to meet the contact recreation use based on the 2018 Texas Integrated Report. These were Estelle Creek (0841J) and Rush Creek (0841R).

Visit our website at: <www.tceq.texas.gov/goto/tmdl/>