

TO: Office of Chief Clerk DATE: December 13, 2021

FROM: Betsy Peticolas and Amanda Kraynok  
Environmental Law Division

SUBJECT: Backup Materials for Consideration of Hearing Requests at Agenda

Applicant: AmeriTex Pipe & Products, LLC  
Proposed Permit No.: Air Quality Registration No. 159336  
Program: Air  
Docket No.: TCEQ Docket No. 2021-0056-AIR

- The Standard Permit for Concrete Batch Plants.
- A summary of the technical review of the permit application, which includes a compliance summary of the applicant.
- The plot plan for the proposed plants.

## Standard Permit General Conditions

The following general conditions are applicable to holders of standard permits, but will not necessarily be specifically stated within the standard permit document.

1. Protection of public health and welfare. The emissions from the facility must comply with all applicable rules and regulations of the commission adopted under the Texas Health and Safety Code, Chapter 382, and with intent of the TCAA, including protection of health and property of the public.
2. Standard permit representations. All representations with regard to construction plans, operating procedures, and maximum emission rates in any registration for a standard permit become conditions upon which the facility or changes thereto, must be constructed and operated. It is unlawful for any person to vary from such representations if the change will affect that person's right to claim a standard permit under this section. Any change in condition such that a person is no longer eligible to claim a standard permit under this section requires proper authorization under Title 30 Texas Administrative Code § 116.110 (30 TAC § 116.110) (relating to Applicability). Any changes in representations are subject to the following requirements:
  - (A) For the addition of a new facility, the owner or operator shall submit a new registration incorporating existing facilities with a fee, in accordance with §116.611 and §116.614 (relating to Registration to use a Standard Permit and Standard Permit Fees) prior to commencing construction. If the applicable standard permit requires public notice, construction of the new facility or facilities may not commence until the new registration has been issued by the executive director.
  - (B) For any change in the method of control of emissions, a change in the character of the emissions, or an increase in the discharge of the various emissions, the owner or operator shall submit written notification to the executive director describing the change(s), along with the designated fee, no later than 30 days after the change.
  - (C) For any other change to the representations, the owner or operator shall submit written notification to the executive director describing the change(s) no later than 30 days after the change.
  - (D) Any facility registered under a standard permit which contains conditions or procedures for addressing changes to the registered facility which differ from subparagraphs (A) - (C) of this paragraph shall comply with the applicable requirements of the standard permit in place of subparagraphs (A) - (C) of this paragraph.
3. Standard permit in lieu of permit amendment. All changes authorized by standard permit to a facility previously permitted under 30 TAC § 116.110 shall be administratively incorporated into that facility's permit at such time as the permit is amended or renewed.
4. Construction progress. Start of construction, construction interruptions exceeding 45 days, and completion of construction shall be reported to the appropriate regional office not later than 15 working days after occurrence of the event, except where a different time period is specified for a particular standard permit.
5. Start-up notification. The appropriate air program regional office of the commission and any other air pollution control program having jurisdiction shall be notified prior to the commencement of operations of the facilities authorized by the standard permit in such a manner that a representative of the executive director may be present. For phased construction, which may involve a series of units commencing operations at different times, the owner or operator of the facility shall provide separate

notification for the commencement of operations for each unit. A particular standard permit may modify start-up notification requirements.

6. Sampling requirements. If sampling of stacks or process vents is required, the standard permit holder shall contact the Office of Air and any other air pollution control program having jurisdiction prior to sampling to obtain the proper data forms and procedures. All sampling and testing procedures must be approved by the executive director and coordinated with the regional representatives of the commission. The standard permit holder is also responsible for providing sampling facilities and conducting the sampling operations or contracting with an independent sampling consultant.
7. Equivalency of methods. The standard permit holder shall demonstrate or otherwise justify the equivalency of emission control methods, sampling or other emission testing methods, and monitoring methods proposed as alternatives to methods indicated in the conditions of the standard permit. Alternative methods must be applied for in writing and must be reviewed and approved by the executive director prior to their use in fulfilling any requirements of the standard permit.
8. Recordkeeping. A copy of the standard permit along with information and data sufficient to demonstrate applicability of and compliance with the standard permit shall be maintained in a file at the plant site and made available at the request of representatives of the executive director, the U.S. Environmental Protection Agency, or any air pollution control program having jurisdiction. For facilities that normally operate unattended, this information shall be maintained at the nearest staffed location within Texas specified by the standard permit holder in the standard permit registration. This information must include (but is not limited to) production records and operating hours. Additional recordkeeping requirements may be specified in the conditions of the standard permit. Information and data sufficient to demonstrate applicability of and compliance with the standard permit must be retained for at least two years following the date that the information or data is obtained. The copy of the standard permit must be maintained as a permanent record.
9. Maintenance of emission control. The facilities covered by the standard permit may not be operated unless all air pollution emission capture and abatement equipment is maintained in good working order and operating properly during normal facility operations. Notification for upsets and maintenance shall be made in accordance with 30 TAC §§ 101.201 and 101.211 (relating to Emissions Event Reporting and Recordkeeping Requirements, Scheduled Maintenance, Startup, and Shutdown Reporting and Recordkeeping Requirements, Recordkeeping; and Operational Requirements).
10. Compliance with rules. Registration of a standard permit by a standard permit applicant constitutes an acknowledgment and agreement that the holder will comply with all rules, regulations, and orders of the commission issued in conformity with the TCAA and the conditions precedent to the claiming of the standard permit. If more than one state or federal rule or regulation or permit condition is applicable, the most stringent limit or condition shall govern. Acceptance includes consent to the entrance of commission employees and designated representatives of any air pollution control program having jurisdiction into the permitted premises at reasonable times to investigate conditions relating to the emission or concentration of air contaminants, including compliance with the standard permit.
11. Distance Limitations. Distance limitations, setbacks, and buffer zones. Notwithstanding any requirement in any standard permit, if a standard permit for a facility requires a distance, setback, or buffer from other property or structures as a condition of the permit, the determination of whether the distance, setback, or buffer is satisfied shall be made on the basis of conditions existing at the earlier of:
  - (A) The date new construction, expansion, or modification of a facility begins; or
  - (B) The date any application or notice of intent is first filed with the commission to obtain approval for the construction or operation of the facility.

## **Amendments to the Air Quality Standard Permit for Concrete Batch Plants**

**Effective Date September 22, 2021**

### **(1) Applicability**

- (A) This air quality standard permit authorizes concrete batch plant facilities that meet all of the conditions listed in sections (1) through (7) and one of sections (8), (9), or (10). If a concrete batch plant operates using sections (8), (9), or (10) of this standard permit and operational changes are proposed that would change the applicable section, the owner or operator shall reregister for the concrete batch plant standard permit prior to operating the change.
- (B) This standard permit does not authorize emission increases of any air contaminant that is specifically prohibited by a condition or conditions in any permit issued under Title 30 Texas Administrative Code (30 TAC) Chapter 116, Control of Air Pollution by Permits for New Construction or Modification, at the site.
- (C) This standard permit does not relieve the owner or operator from complying with any other applicable provision of the Texas Health and Safety Code (THSC), Texas Water Code, rules of the Texas Commission on Environmental Quality (TCEQ), or any additional state or federal regulations.
- (D) Facilities that meet the conditions of this standard permit do not have to meet the emissions and distance limitations in 30 TAC § 116.610(a)(1).

### **(2) Definitions**

- (A) Auxiliary tank - storage containers used to hold raw materials for use in the batching process not including petroleum products and fuel storage tanks.
- (B) Cohesive hard surface - An in-plant road surface preparation including, but not limited to: paving with concrete, asphalt, or other similar surface preparation where the road surface remains intact during vehicle and equipment use and is capable of being cleaned. Cleaning mechanisms may include water washing, sweeping, or vacuuming.
- (C) Concrete batch plant - For the concrete batch plant standard permit, it is a plant that consists of a concrete batch facility and associated abatement equipment, including, but not limited to: material storage silos, aggregate storage bins, auxiliary storage tanks, conveyors, weigh hoppers, and a mixer. Concrete batch plants can add water, Portland cement, and aggregates into a delivery truck, or the concrete may be prepared in a central mix drum and transferred to a delivery truck for transport. This definition does not include operations that meet the requirements of 30 TAC § 106.141, Batch Mixer or 30 TAC § 106.146, Soil Stabilization Plants.

- (D) Dust suppressing fencing or other barrier - A manmade obstruction that is at least 12 feet high that is used to prevent fugitive dust from stationary equipment stockpiles, in-plant roads, and traffic areas from leaving the plant property.
- (E) Permanent concrete batch plant - For the concrete batch plant standard permit, it is a concrete batch plant that is not a temporary or specialty concrete batch plant.
- (F) Related project segments - For plants on a Texas Department of Transportation right-of-way, related project segments are one contract with multiple project locations or one contractor with multiple contracts in which separate project limits are in close proximity to each other. A plant that is sited on the right-of-way is usually within project limits. However, a plant located at an intersection or wider right-of-way outside project limits is acceptable if it can be easily associated with the project.
- (G) Right-of-way of a public works project - Any public works project that is associated with a right-of-way. Examples of right-of-way public works projects are public highways and roads, water and sewer pipelines, electrical transmission lines, and other similar works. A facility must be in or contiguous to the right-of-way of the public works project to be exempt from the public notice requirements listed in Texas Health and Safety Code, § 382.056, Notice of Intent to Obtain Permit or Permit Review; Hearing.
- (H) Site - The total of all stationary sources located on one or more contiguous or adjacent properties, which are under common control of the same person (or persons under common control).
- (I) Specialty concrete batch plant - For the concrete batch plant standard permit, it is a concrete batch plant with a low production concrete mixing plant that manufactures concrete less than or equal to 30 cubic yards per hour (cu yd/hr). These plants are typically dedicated to manufacturing precast concrete products, including but not limited to burial vaults, septic tanks, yard ornaments, concrete block, and pipe, etc. This does not include small repair projects using mortar, grout, gunite, or other concrete repair materials.
- (J) Stationary internal combustion engine - For the concrete batch plant standard permit, it is any internal combustion engine that remains at a location for more than 12 consecutive months and is not defined as a nonroad engine according to 40 Code of Federal Regulations (CFR) 89.2, Definitions.
- (K) Temporary concrete batch plant - For the concrete batch plant standard permit, it is a concrete batch plant that occupies a designated site for not more than 180 consecutive days or that supplies concrete for a single project (single contract or same contractor for related project segments), but not for other unrelated projects.

- (L) Traffic areas - For the concrete batch plant standard permit, it is an area within the concrete batch plant that includes stockpiles and the area where mobile equipment moves or supplies aggregate to the batch plant and trucks supply aggregate and cement.

**(3) Administrative Requirements**

- (A) The owner or operator of any concrete batch plant seeking authorization under this standard permit shall register in accordance with 30 TAC § 116.611, Registration to Use a Standard Permit. Owners or operators shall submit a completed, current form PI-1S Registrations for Air Standard Permit, Table 11, Fabric Filters, Table 20, Concrete Batch Plants, and a Concrete Batch Plant Standard Permit checklist.
- (B) Owners or operators shall also comply with 30 TAC § 116.614, Standard Permit Fees when they are required to complete public notice under section four of this standard permit.
- (C) No owner or operator of a concrete batch plant shall begin construction or operation without obtaining written approval from the TCEQ executive director.
- (D) The time period in 30 TAC § 116.611(b) (45 days) does not apply to owners or operators registering plants under this standard permit.
- (E) Beginning on the effective date, all new and modified sources must comply with this standard permit.
- (F) Renewals shall comply with this standard permit on the later of:
  - (i) Two years from the effective date; or
  - (ii) the date the facility's registration is renewed.
- (G) Owners or operators of temporary concrete plants seeking registration and those already registered for this standard permit that qualify for relocation under subsection (8)(F) are exempt from public notice requirements in section (4) of this standard permit.
- (H) During start of construction, the owner or operator of a plant shall comply with 30 TAC § 116.120(a)(1), Voiding of Permits, and commence construction within 18 months of written approval from the Executive Director.
- (I) Owners or operators are not required to submit air dispersion modeling as a part of this concrete batch plant standard permit registration.
- (J) Owners or operators shall keep written records on site for a rolling 24-month period. Owners or operators shall make these records available at the request of TCEQ personnel or any air pollution control program having jurisdiction. Records shall be maintained on site for the following including, but not limited to:

- (i) 30 TAC § 101.201, Emissions Event Reporting and Recordkeeping Requirements;
  - (ii) 30 TAC § 101.211, Scheduled Maintenance, Startup, and Shutdown Reporting and Recordkeeping Requirements;
  - (iii) production rate for each hour and day of operation that demonstrates compliance with subsection (8)(A),(9)(A), or (10)(A) of this standard permit, as applicable;
  - (iv) all repairs and maintenance of abatement systems;
  - (v) Material Safety Data Sheets for all additives and other chemicals used at the site;
  - (vi) road cleaning, application of road dust control, or road maintenance for dust control;
  - (vii) stockpile dust suppression;
  - (viii) silo warning device or shut-off system tests;
  - (ix) quarterly visible emissions observations and any corrective actions required to control excess visible emissions;
  - (x) demonstration of compliance with subsection (6)(B) of this standard permit; and
  - (xi) type of fuel used to power engines authorized by this standard permit.
- (K) Owners or operators will document and report abatement equipment failure or visible emissions deviations in excess of paragraph (5)(B)(iii) in accordance with 30 TAC Chapter 101, General Air Quality Rules as appropriate.

**(4) Public Notice**

The owner or operator shall follow the notice requirements in 30 TAC Chapter 39, Public Notice, unless a temporary concrete batch plant is exempted from public notice under 30 TAC § 116.178(b), Relocations and Changes of Location of Portable Facilities.

**(5) General Requirements**

- (A) Owners or operators shall vent all cement/flyash storage silos, weigh hoppers, and auxiliary storage tanks to a fabric/cartridge filter or to a central fabric/cartridge filter system except as allowed by subsection (10)(B).
- (B) Owners or operators shall maintain fabric or cartridge filters and collection systems by meeting all the following:
  - (i) operating them properly with no tears or leaks;

- (ii) using filter systems (including any central filter system) designed to meet a minimum control efficiency of at least 99.5 percent at particle sizes of 2.5 microns and smaller;
  - (iii) meeting a performance standard of no visible emissions exceeding 30 seconds in any six-minute period as determined using United States Environmental Protection Agency (EPA) Test Method (TM) 22; and
  - (iv) sufficiently illuminating silo filter exhaust systems when cement or fly ash silos are filled during non-daylight hours to enable a determination of compliance with the visible emissions requirement in paragraph (5)(B)(iii) of this standard permit.
- (C) When transferring cement/flyash, owners or operators shall:
  - (i) totally enclose conveying systems to and from storage silos and auxiliary storage tanks, operate them properly, and maintain them with no tears or leaks; and
  - (ii) maintain the conveying system using a performance standard of no visible emissions exceeding 30 seconds in any six-minute period as determined using EPA TM 22, except during cement and flyash tanker connect and disconnect.
- (D) The owner or operator shall install an automatic shut-off or warning device on storage silos.
  - (i) An automatic shut-off device on the silo shall shut down the loading of the silo or auxiliary storage tank prior to reaching its capacity during loading operations, in order to avoid adversely impacting the pollution abatement equipment or other parts of the loading operation.
  - (ii) If a warning device is used, it shall alert operators in sufficient time to prevent an adverse impact on the pollution abatement equipment or other parts of the loading operation. Visible warning devices shall be kept free of particulate build-up at all times.
  - (iii) Silo and auxiliary tank warning devices or shut-off systems shall be tested at least once monthly during operations and records shall be kept indicating test and repair results according to subsection (3)(J) of this standard permit. Silo and auxiliary tank loading and unloading shall not be conducted with inoperative or faulty warning or shut-off devices.
- (E) Owners or operators shall control emissions from in-plant roads and traffic areas at all times by:
  - (i) watering them; or



- (ii) treating them with dust-suppressant chemicals as described in the application of aqueous detergents, surfactants, and other cleaning solutions in the de minimis list; or
  - (iii) covering them with a material such as, (but not limited to), roofing shingles or tire chips and used in combination with (i) or (ii) of this subsection; or
  - (iv) paving them with a cohesive hard surface that is maintained intact and cleaned.
- (F) Owners or operators shall use water, dust-suppressant chemicals, or cover stockpiles, as necessary to minimize dust emissions.
- (G) Owners or operators shall immediately clean up spilled materials. To minimize dust emissions, owners or operators shall contain, or dampen spilled materials.
- (H) There shall be no visible fugitive emissions leaving the property. Observations for visible emissions shall be performed and recorded quarterly. The visible emissions determination shall be made during normal plant operations. Observations shall be made on the downwind property line for a minimum of six minutes. If visible emissions are observed, an evaluation must be accomplished in accordance with U.S. Environmental Protection Agency (EPA) Title 40 Code of Federal Regulations Part 60 (40 CFR Part 60), Appendix A, TM 22, using the criteria that visible emissions shall not exceed a cumulative 30 seconds in duration in any six-minute period. If visible emissions exceed the Test Method 22 criteria, immediate action shall be taken to eliminate the excessive visible emissions. The corrective action shall be documented within 24 business hours of completion.
- (I) The owner or operator shall locate the concrete batch plant operating under this standard permit at least 550 feet from any crushing plant or hot mix asphalt plant. The owner or operator shall measure from the closest point on the concrete batch plant to the closest point on any other facility. If the owner or operator cannot meet this distance, then the owner or operator shall not operate the concrete batch plant at the same time as the rock crusher, concrete crusher, or hot mix asphalt plant.
- (J) When operating multiple concrete batch plants on the same site, the owner or operator shall comply with the appropriate site production limits specified in sections (8), (9), or (10) of this standard permit. If engines are being used for electrical power or equipment operations, then the site is limited to a total of 1,000 hp in simultaneous operation. There are no restrictions to engine operations if the engines will be on site for less than 12 consecutive months.
- (K) Concrete additives shall not emit volatile organic compounds (VOCs).
- (L) Any claim under this standard permit shall comply with:

- (i) 30 TAC § 116.604, Duration and Renewal of Registrations to Use Standard Permits;
- (ii) 30 TAC § 116.605(d)(I), Standard Permit Amendment and Revocation;
- (iii) 30 TAC § 116.614;
- (iv) the public notice processes established in THSC, § 382.055, Review and Renewal of Preconstruction Permit;
- (v) the public notice processes established in THSC, § 382.056;
- (vi) the contested case hearing and public notice requirements established in 30 TAC § 55.152(a)(2), Public Comment Period; and
- (vii) the contested case hearing and public notice requirements established in 30 TAC § 55.201(h)(i)(C), Requests for Reconsideration or Contested Case Hearing.

**(6) Engines**

- (A) This standard permit authorizes emissions from a stationary compression ignition internal combustion engine (or combination of engines) of no more than 1000 total horsepower.
- (B) Owners or operators of concrete batch plants that include a stationary compression ignition internal combustion engines shall comply with additional applicable engine requirements in 40 CFR 60 Subpart IIII, Standards of Performance for Stationary Compression Ignition Internal Combustion Engines, 40 CFR 63, Subpart ZZZZ, National Emissions Standards for Hazardous Air Pollutants for Stationary Reciprocating Internal Combustion Engines, 30 TAC Chapter 117, Control of Air Pollution from Nitrogen Compounds, and any other applicable state or federal regulation.
- (C) Engine exhaust stacks shall be a minimum of eight feet tall.
- (D) Fuel for the engine shall be liquid fuel with a maximum sulfur content of no more than 0.0015 percent by weight and shall not consist of a blend containing waste oils or solvents.

**(7) Planned Maintenance, Startup, and Shutdown (MSS) Activities**

This standard permit authorizes operations including planned startup and shutdown emissions. Maintenance activities are not authorized by this standard permit and will need separate authorization unless the activity can meet the conditions of 30 TAC § 116.119, De Minimis Facilities or Sources.

**(8) Additional Requirements for Temporary Concrete Plants**

- (A) The owner or operator shall limit site production to no more than 300 cubic yards in any one hour and no more than 6,000 cubic yards per day.
- (B) The owner or operator shall use a suction shroud or other pickup device at the batch drop point (drum feed for central mix plants) and vent it to a

fabric or cartridge filter system operating with a minimum of 5,000 actual cubic feet per minute (acfm) of air.

- (C) For truck mix plants, the owner or operator shall shelter the drop point by an intact three-sided curtain, or equivalent dust control technology that extends below the mixer truck-receiving funnel.
- (D) The owner or operator shall maintain the following minimum plant buffer distances from any property line, except for temporary concrete plants approved to operate in the right of way of a public works project:
  - (i) The suction shroud baghouse exhaust shall be at least 100 feet from any property line.
  - (ii) The owner or operator shall not locate or operate stationary equipment, stockpiles, or vehicles used for the operation of the concrete batch plant (except for incidental traffic and the entrance and exit to the site) within 50 feet from any property line.
- (E) In lieu of meeting the buffer distance requirement for roads and stockpiles in subsection (8)(D) of this standard permit owners or operators shall:
  - (i) construct dust suppressing fencing or other barriers as a border around roads, other traffic areas, and work areas;
  - (ii) construct these borders to a height of at least 12 feet; and
  - (iii) contain stockpiles within a three-walled bunker that extends at least two feet above the top of the stockpile.
- (F) The appropriate TCEQ regional office may approve, without the need of public notice referenced in section (4) of this standard permit, the relocations of a temporary concrete batch plant that has previously been determined by the commission to be in compliance with the technical requirements of the concrete batch plant standard permit version adopted at registration that provides the information listed under subsection (8)(G) and meets one of the following conditions:
  - (i) A registered portable facility and associated equipment are moving to a site for support of a public works project in which the proposed site is located in or contiguous to the right-of-way of the public works project; or
  - (ii) A registered portable facility is moving to a site in which a portable facility has been located at the site at any time during the previous two years and the site was subject to public notice.
- (G) For relocations meeting subsection (8)(F) of this standard permit, the owner or operator must submit to the regional office and any local air pollution control agency having jurisdiction at least 12 business days prior to locating at the site:
  - (i) The company name, address, company contact, and telephone number;

- (ii) The regulated entity number (RN), customer reference number (CN), applicable permit or registration numbers, and if available, the TCEQ account number;
- (iii) The location from which the facility is moving (current location);
- (iv) A location description of the proposed site (city, county, and exact physical location description);
- (v) A scaled plot plan that identifies the location of all equipment and stockpiles, and also indicates that the required distances to the property lines can be met;
- (vi) A scaled area map that clearly indicates how the proposed site is contiguous or adjacent to the right-of-way of a public works project (if required);
- (vii) The proposed date for start of construction and expected date for start of operation;
- (viii) The expected time period at the proposed site;
- (ix) The permit or registration number of the portable facility that was located at the proposed site any time during the last two years, and the date the facility was last located there. This information is not necessary if the relocation request is for a public works project that is contiguous or adjacent to the right-of-way of a public works project; and
- (x) Proof that the proposed site had accomplished public notice, as required by 30 TAC Chapter 39. This proof is not necessary if the relocation request is for a public works project that is contiguous or adjacent to the right-of-way of a public works project.

**(9) Additional Requirements for Permanent Concrete Plants**

- (A) The owner or operator shall limit site production to no more than 300 cubic yards in any one hour and no more than 6,000 cubic yards per day.
- (B) The owner or operator shall install a suction shroud or other pickup device at the batch drop point (drum feed for central mix plants) and vent it to a fabric/cartridge filter system with a minimum of 5,000 acfm.
- (C) For truck mix plants, the owner or operator shall shelter the drop point by an intact three-sided curtain, or equivalent dust control technology that extends below the mixer truck-receiving funnel.
- (D) The owner or operator shall maintain the following minimum plant buffer distances from any property line:
  - (i) The suction shroud baghouse exhaust shall be at least 100 feet from any property line;
  - (ii) The owner or operator shall not locate or operate stationary equipment, stockpiles, or vehicles used for the operation of the

concrete batch plant (except for incidental traffic and the entrance and exit to the site), within 50 feet from any property line.

- (E) In lieu of meeting the buffer distance requirements for roads and stockpiles of paragraph (9)(D)(ii) of this standard permit, the owner or operator shall:
  - (i) construct dust suppressing fencing or other barriers as a border around roads, other traffic areas, and work areas;
  - (ii) construct these borders to a height of at least 12 feet; and
  - (iii) contain stockpiles within a three-walled bunker that extends at least two feet above the top of the stockpile.
- (F) The owner or operator shall pave all entry and exit roads and main traffic routes associated with the operation of the concrete batch plant (including batch truck and material delivery truck roads) with a cohesive hard surface that can be maintained intact and shall be cleaned. All batch trucks and material delivery trucks shall remain on the paved surface when entering, conducting primary function, and leaving the property. The owner or operator shall maintain other traffic areas using the control requirements of subsection (5)(E) of this standard permit.

**(10) Additional Requirements for Specialty Concrete Batch Plants**

- (A) The owner or operator shall limit site production to no more than 30 cubic yards per hour.
- (B) As an alternative to the requirement in subsection (5)(A) of this standard permit, the owner or operator may vent the cement/fly ash weigh hopper inside the batch mixer.
- (C) The owner or operator shall control dust emissions at the batch mixer feed so that no outdoor visible emissions occur by one of the following:
  - (i) using a suction shroud or other pickup device delivering air to a fabric or cartridge filter;
  - (ii) using an enclosed batch mixer feed; or
  - (iii) conducting the entire mixing operation inside an enclosed process building.
- (D) The owner or operator shall not operate vehicles used for the operation of the concrete batch plant (except for incidental traffic and the entrance and exit to the site) within a minimum buffer distance of 25 feet from any property line.
- (E) In lieu of meeting the buffer distance requirement for roads and other traffic areas in subsection (10)(D) of this standard permit, owners or operators shall:
  - (i) construct dust suppressing fencing or other barriers as a border around roads, other traffic areas, and work areas; and

- (ii) construct these barriers borders to a height of at least 12 feet.

## Concrete Batch Plant Standard Permit Source Analysis & Technical Review

Company	<b>Ameritex Pipe &amp; Products, LLC</b>	Permit Number	<b>164317</b>
City	<b>Gunter</b>	Project Number	<b>326479</b>
County	<b>Grayson</b>	Regulated Entity Number	<b>RN111213443</b>
Project Type	<b>Initial</b>	Customer Reference Number	<b>CN604263251</b>
Project Reviewer	<b>Donald D. Nelson</b>	Received Date	<b>March 8, 2021</b>
Site Address	<b>located approximately 2,200 feet southeast of the intersection of McDonald Road and Wall Street Road</b>		

### Project Overview

#### Facility Description:

This is the proposed authorization of 4 permanent concrete batch plants with a combined maximum production rate of 160 cubic yards per hour. There are 2 other concrete batch plants on site authorized under registration number 159336 with a combined hourly production rate of 130 cubic yards per hour. With all 6 concrete batch plants the combined hourly maximum production rate of 290 cubic yards per hour not to exceed 6,000 cubic yards per day. The applicant has represented the facility will operate up to 8,760 hours per year. Additionally, the applicant has represented all wet concrete produced will remain on site for precast concrete products. All mixing operations will be performed inside an enclosed process building.

#### Process Description:

Washed sand and gravel (Aggregate) are to be delivered by trucks and stockpiled at the facility. The stockpiled material will be sprinkled with water as needed for dust-control. When needed for production, the aggregate will be moved via a front-end loader to the hopper and then conveyed to the elevated aggregate bin from where the material will drop into the weigh batcher. The weighed material will drop into the central mixer and then into either rotating drums of mixer trucks or directly into product molds.

Cement/Flyash will be pneumatically conveyed from delivery tankers into three silos. Remaining in total enclosure, the cement will then be gravity dropped from the silo into the cement weigh batcher. The weighed cement will drop into the central mixer and then into either rotating drums of mixer trucks or directly into product molds. Particulate matter control of cement dust from the silo will be a vent style bag house. At the central mixer point all emissions will be vented to a central dust collector through a suction shroud.

Maintenance activities will be authorized either under permit by rule or claimed under 30 Texas Administrative Code § 116.119, De Minimis Facilities or Sources. Emissions from planned startup and shutdown activities will be authorized by this permit.

Startup and shutdown emissions are included in the production emissions. Although there may be minor emissions associated with startup and shutdown, particulate emission factors used to quantify production emissions are considered to have enough conservatism to include any incidental increases that may be attributed to startup and shutdown.

### Deficiencies

Has all required information been received by the TCEQ?	<b>Yes</b>
Date registration claim complete:	<b>03/20/2021</b>

# Concrete Batch Plant Standard Permit Source Analysis & Technical Review

Permit No. 164317  
Page 2

Regulated Entity No. RN111213443

## Compliance History Evaluation

A compliance history report was reviewed on:	03/20/2021
Site rating & classification:	N/A
Company rating & classification:	0.00 / High
If site was rated unsatisfactory, what action(s) occurred as a result:	N/A

## Public Notice Information

Requirement	Date
Small Business Source?	No
Legislator letters mailed	3/9/2021
Date consolidated notice published	03/30/2021
Publication Name: <b>Herald Democrat</b>	
Pollutants: <b>PM, PM<sub>10</sub>, PM<sub>2.5</sub>, Road Dust, Aggregate, Cement</b>	
Date Alternate Language consolidated notice published (if applicable)	N/A
Publication Name (Alternate Language): <b>N/A</b>	
Last Day for Public Comment	07/19/2021
Public notice tearsheet(s) received	04/27/2021
Public notice affidavit(s) received	04/27/2021
Public notice certification of sign posting/application availability received	10/25/2021

## Public Interest

Number of comments received	97
Number of meeting requests received	47
Number of hearing requests received	17
Date meeting held	07/19/2021
Date response to comments filed with OCC	09/29/2021
Date of SOAH hearing	

## Recommendations

All conditions of Standard Permit satisfied?  
Final Action:



**Concrete Batch Plant Standard Permit  
Source Analysis & Technical Review**

Permit No. 164317  
Page 3

Regulated Entity No. RN111213443

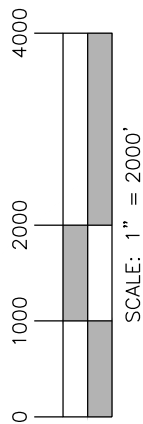
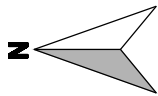
---

Project Reviewer  
Donald D. Nelon

Date

Team Leader  
Ann Mosher

Date



RESIDENCE

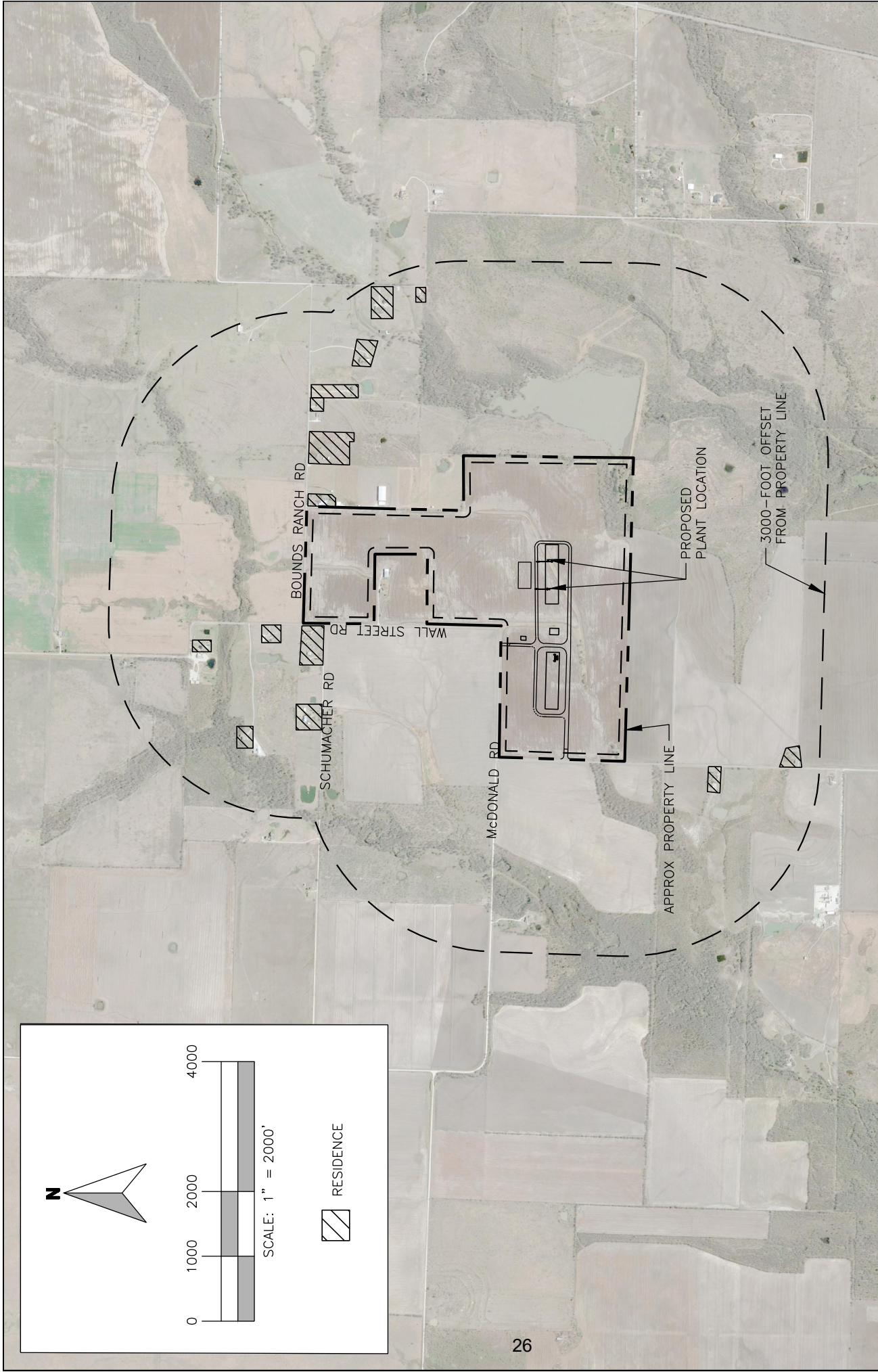


IMAGE:

GOOGLE EARTH	11/26/2018
ISSUE DATE:	03/08/2021
DRAWN BY:	ES
CHECKED BY:	MF
SCALE: 1" =	1000'
JOB NO.:	10847-014

SHEET NO.:

## AREA MAP

STANDARD PERMIT CONCRETE BATCH PLANT  
AMERITEX PIPE AND PRODUCTS, LLC  
GUNTER, GRAYSON COUNTY, TEXAS

REV.	DESCRIPTION	BY	DATE



# WESTWARD

Environmental Engineering, Natural Resources.

P.O. Box 2205 Boerne, Texas 78006

(830) 249-8284 Fax: (830) 249-0221

TBPE REG. NO.: F-4524

TBPG REG. NO.: 50112