

TEXAS COMMISSION ON ENVIRONMENTAL QUALITY  
**AGENDA ITEM REQUEST**  
for State Implementation Plan Adoption

**AGENDA REQUESTED:** October 5, 2022

**DATE OF REQUEST:** September 16, 2022

**INDIVIDUAL TO CONTACT REGARDING CHANGES TO THIS REQUEST, IF NEEDED:** Jamie Zech, Agenda Coordinator, (512) 239-3935.

**CAPTION: Docket No. 2022-0133-SIP.** Consideration for adoption of the Hutchinson County Attainment Demonstration State Implementation Plan (SIP) Revision for the 2010 One-Hour Sulfur Dioxide (SO<sub>2</sub>) National Ambient Air Quality Standard (NAAQS). The SIP revision addresses federal Clean Air Act SIP requirements for the Hutchinson County SO<sub>2</sub> nonattainment area by including a comprehensive inventory of current SO<sub>2</sub> emissions; evaluation and provision for implementing all reasonably available control measures and reasonably available control technology; air quality dispersion modeling to demonstrate attainment; a reasonable further progress demonstration; contingency measures; and certification that nonattainment New Source Review requirements are met.

The associated 30 Texas Administrative Code Chapter 112 Subchapter F rules (Rule Project No. 2021-035-112-AI) provide the enforceable control strategy demonstrating attainment of the 2010 SO<sub>2</sub> NAAQS by the April 30, 2026, attainment date. (Mary Ann Cook, Terry Salem, John Minter; SIP Project No. 2021-011-SIP-NR)

Sam Short

---

**Acting Director**

Donna F. Huff

---

**Deputy Director**

Jamie Zech

---

**Agenda Coordinator**

Copy to CCC Secretary? NO  YES

# Texas Commission on Environmental Quality

## Interoffice Memorandum

**To:** Commissioners **Date:** September 16, 2022

**Thru:** Laurie Gharis, Chief Clerk  
Toby Baker, Executive Director

**From:** Sam Short, Acting Director  
Office of Air

**Docket No.:** 2022-0133-SIP

**Subject:** Commission Approval for Adoption of the Hutchinson County Attainment Demonstration State Implementation Plan (SIP) Revision for the 2010 One-Hour Sulfur Dioxide (SO<sub>2</sub>) National Ambient Air Quality Standard (NAAQS)

Hutchinson County 2010 SO<sub>2</sub> Attainment Demonstration SIP Revision  
SIP Project No. 2021-011-SIP-NR

**Background and reason(s) for the SIP revision:**

On June 22, 2010, the United States Environmental Protection Agency (EPA) revised the SO<sub>2</sub> NAAQS, adding a 75 parts per billion (ppb) one-hour primary standard, effective August 23, 2010 (75 *Federal Register* (FR) 35520).

In the final round of designations for the 2010 SO<sub>2</sub> NAAQS, the EPA designated a portion of Hutchinson County as nonattainment, effective April 30, 2021 (86 FR 16055). Texas is required to submit an attainment demonstration SIP revision regarding the Hutchinson County nonattainment area to the EPA by October 30, 2022. The SIP revision is required to demonstrate attainment of the 2010 SO<sub>2</sub> NAAQS as expeditiously as practicable but no later than five years after the effective date of designations, or April 30, 2026.

**Scope of the SIP revision:**

This SIP Revision fulfills Texas' federal Clean Air Act (FCAA) SIP planning requirements for the 2010 One-Hour SO<sub>2</sub> NAAQS in the Hutchinson County nonattainment area. This SIP revision, together with the associated 30 Texas Administrative Code Chapter 112, Subchapter F rules (Rule Project No. 2021-035-112-AI), documents the state's plan to achieve the emission reductions required to demonstrate timely attainment of the SO<sub>2</sub> NAAQS in the Hutchinson County nonattainment area and meet other FCAA-required SIP elements.

**A.) Summary of what the SIP revision will do:**

This SIP revision, together with the associated Chapter 112 rules, demonstrates attainment and maintenance of the 2010 SO<sub>2</sub> NAAQS in the Hutchinson County nonattainment area as expeditiously as practicable but not later than April 30, 2026.

**B.) Scope required by federal regulations or state statutes:**

In accordance with FCAA, §172 general requirements and FCAA, §191 and §192 specific requirements, this attainment demonstration SIP revision includes a comprehensive inventory of current SO<sub>2</sub> emissions; a control strategy with evaluation and provision for implementing all reasonably available control measures and reasonably available control technology; air quality dispersion modeling to demonstrate attainment of the 2010 SO<sub>2</sub> NAAQS; a reasonable further progress (RFP) demonstration; contingency measures; and the state's certification that current regulations provide the means to satisfy nonattainment New Source Review requirements for the Hutchinson County 2010 SO<sub>2</sub> nonattainment area.

This SIP revision submittal must demonstrate that the 2010 SO<sub>2</sub> NAAQS will be attained as expeditiously as practicable but not later than April 30, 2026. Based on the EPA's *Guidance for 1-*

Re: Docket No. 2022-0133-SIP

*Hour SO<sub>2</sub> Nonattainment Area SIP Submissions*, control strategies must be in place by January 1, 2025 to provide for attainment of the NAAQS by the April 30, 2026 attainment deadline.

**C.) Additional staff recommendations that are not required by federal rule or state statute:**  
None.

**Statutory authority:**

Sections 382.002, 382.011 and 382.012 of the Texas Clean Air Act (TCAA), which is codified as Texas Health & Safety Code, (THSC), Chapter 382, provide authority for the commission's purpose to safeguard the state's air resources as well as to control the quality of the state's air and prepare and develop a general, comprehensive plan for the proper control of the state's air. The Texas Water Code, Section 5.102 provides general authority for the commission necessary for it to exercise its authority and discharge its duties.

The authority to propose and adopt the SIP revision is derived from FCAA, 42 United States Code, §7410, which requires states to submit SIP revisions that contain enforceable measures to achieve the NAAQS, and other general and specific authority in Texas Water Code, Chapters 5 and 7, and THSC, Chapter 382.

**Effect on the:**

**A.) Regulated community:**

For the Hutchinson County nonattainment area to attain the 2010 SO<sub>2</sub> NAAQS, SO<sub>2</sub> emission reductions are necessary. The control strategy for demonstrating attainment of the 2010 SO<sub>2</sub> NAAQS in the Hutchinson County SO<sub>2</sub> nonattainment area is made enforceable with commission adoption of the associated Chapter 112 rules. All affected emissions sources in the nonattainment area are required to comply with all requirements and stipulations of the associated rules.

**B.) Public:**

The public in the nonattainment area and possibly the surrounding areas will benefit from improved air quality due to lower SO<sub>2</sub> emission levels resulting from implementation of the control strategy in this SIP revision.

**C.) Agency programs:**

No impact on agency programs is anticipated from this SIP revision.

**Stakeholder meetings:**

Stakeholder meetings were held with regulated entities during development of the associated rules. The proposed SIP revision went through public review and comment with one public hearing held.

**Public Comment:**

The commission held a public hearing on the proposed SIP revision and associated proposed rules on May 19, 2022 at 6:00 p.m. in Borger, Texas. Notice of the public hearing was published in the *Texas Register* as well as the *Amarillo Globe News* and *Borger News-Herald* newspapers in English and in *El Mensajero* newspaper in Spanish.

The public comment period opened on April 15, 2022 and closed on June 2, 2022. During the comment period, TCEQ staff received comments from the EPA.

Re: Docket No. 2022-0133-SIP

The EPA comments primarily concerned how to access information on data used; why State of Texas Air Reporting System data was not used for modeling; modeling screening of emission sources; modeling protocol; ambient air determinations; fence line receptors for the IACX facility; CP Chem flares; and allowing averaging times longer than one hour only if high degree of variability and one-hour limit is extremely difficult to meet.

**Significant changes from proposal:**

The following significant changes were made in response to comments received on both the SIP revision and associated rulemaking proposals:

- Emission rates for two Phillips 66 sources were updated, which changed design values.
- The plan for contingency measures was revised to account for failure to meet RFP.
- Some rule compliance dates were changed from proposal to require earlier compliance, and these were updated in the SIP revision.
- Compliance with concentration limit for refinery flare gas streams is no longer required for refinery gas streams generated during maintenance, startup and shutdown consistent with 40 CFR §60.103a(h) because the pound per hour SO<sub>2</sub> limits used in the attainment demonstration modeling apply during maintenance startup and shutdown.
- Flare 13 at the Phillips 66 Borger Refinery was removed from the rule, and the associated emission caps were lowered accordingly.
- The hourly SO<sub>2</sub> emission limits for the Phillips 66 Borger Refinery fluidized catalytic cracking units (FCCU)s were lowered and converted to seven-day average values.
- The stack flow rate limits for the Phillips 66 Borger Refinery FCCUs were removed from the rule and SIP.
- Rule text was added to each division allowing sites subject to Subchapter F to request an alternate means of control for units subject to emission limits.
- A table was added to Appendix J: *Modeling Technical Support Document (TSD)* with modeled emission rates for individual sources in Phillips Flex\_R\_CAP and Flex\_MS\_CAP.
- Section 9: *Modeling Run Information and Archive* was added to Appendix J on modeling runs and availability of modeling files.

**Potential controversial concerns and legislative interest:**

None.

**Will this SIP revision affect any current policies or require development of new policies?**

No.

**What are the consequences if this SIP revision does not go forward? Are there alternatives to revising the SIP?**

If this SIP revision is not submitted to the EPA by October 30, 2022, the EPA could issue a finding of failure to submit and require the state to submit the required SIP revision within a specified period. The EPA could also impose sanctions on the state that could include 200% emission offset requirements for new construction and major modifications of stationary sources in the nonattainment area as well as transportation funding restrictions. The EPA would be required to promulgate a federal implementation plan (FIP) if the TCEQ fails to submit, or the EPA does not approve, the required SIP revision within two years of the finding of failure to submit. The EPA could impose sanctions and implement a FIP until the state submits and the EPA approves a replacement SIP for the nonattainment area.

**Key points in the SIP revision adoption schedule:**

**Anticipated adoption date:** October 5, 2022

Commissioners  
Page 4  
September 16, 2022

Re: Docket No. 2022-0133-SIP

**Agency contacts:**

Mary Ann Cook, SIP Project Manager, Air Quality Division, (512) 239-6739  
John Minter, Staff Attorney, Environmental Law Division, (512) 239-0663  
Terry Salem, Staff Attorney, Environmental Law Division, (512) 239-0469  
Jamie Zech, Agenda Coordinator, (512) 239-3935

cc: Chief Clerk, 2 copies  
Executive Director's Office  
Jim Rizk  
Morgan Johnson  
Krista Kyle  
Office of General Counsel  
Mary Ann Cook  
John Minter  
Terry Salem  
Jamie Zech  
Gwen Ricco  
Laurie Barker  
Sam Short  
Donna F. Huff

REVISIONS TO THE STATE OF TEXAS AIR QUALITY  
IMPLEMENTATION PLAN FOR THE CONTROL OF SULFUR  
DIOXIDE AIR POLLUTION

HUTCHINSON COUNTY 2010 SULFUR DIOXIDE STANDARD  
NONATTAINMENT AREA



TEXAS COMMISSION ON ENVIRONMENTAL QUALITY  
P.O. BOX 13087  
AUSTIN, TEXAS 78711-3087

**HUTCHINSON COUNTY ATTAINMENT DEMONSTRATION  
STATE IMPLEMENTATION PLAN FOR THE 2010 ONE-HOUR  
SULFUR DIOXIDE NATIONAL AMBIENT AIR QUALITY  
STANDARD**

2021-011-SIP-NR  
SFR-122/2021-011-SIP-NR

Adoption  
October 5, 2022

*This page intentionally left blank*

## EXECUTIVE SUMMARY

On June 22, 2010, the United States Environmental Protection Agency (EPA) revised the sulfur dioxide (SO<sub>2</sub>) National Ambient Air Quality Standards (NAAQS) to add the 75 parts per billion (ppb) one-hour primary standard, effective August 23, 2010 (75 *Federal Register* (FR) 35520).

In the final round of designations for the 2010 SO<sub>2</sub> NAAQS, the EPA designated a portion of Hutchinson County as nonattainment, effective April 30, 2021 (86 FR 16055). Texas is required to submit an attainment demonstration state implementation plan (SIP) revision for the Hutchinson County 2010 SO<sub>2</sub> NAAQS nonattainment area to the EPA by October 30, 2022. The attainment demonstration SIP revision is required to demonstrate attainment of the 2010 SO<sub>2</sub> NAAQS as expeditiously as practicable but no later than five years after the effective date of designation, or April 30, 2026.

This Hutchinson County Attainment Demonstration SIP Revision for the 2010 One-Hour SO<sub>2</sub> NAAQS demonstrates that the Hutchinson County nonattainment area will attain the 2010 SO<sub>2</sub> NAAQS by the April 30, 2026 attainment date.

In accordance with federal Clean Air Act (CAA), §172 general requirements and CAA, §191 and §192 specific requirements, this SIP revision includes a comprehensive inventory of current SO<sub>2</sub> emissions; evaluation and provision for implementing all reasonably available control measures and reasonably available control technology; air quality dispersion modeling to demonstrate attainment of the 2010 SO<sub>2</sub> NAAQS; a reasonable further progress demonstration; contingency measures; and the state's certification that current regulations provide the means to satisfy nonattainment New Source Review requirements for the Hutchinson County 2010 SO<sub>2</sub> nonattainment area.

This SIP revision incorporates associated 30 Texas Administrative Code (TAC) Chapter 112, Subchapter F rules (Rule Project No. 2021-035-112-AI). The rules provide an enforceable control strategy that limits emissions at applicable emissions sources in the nonattainment area to a level necessary to attain the 2010 SO<sub>2</sub> NAAQS. This SIP revision, together with the associated Chapter 112 rules, fulfills Texas' CAA SIP planning requirements for the Hutchinson County nonattainment area for the 2010 SO<sub>2</sub> NAAQS.



## SECTION V-A: LEGAL AUTHORITY

### General

The Texas Commission on Environmental Quality (TCEQ) has the legal authority to implement, maintain, and enforce the National Ambient Air Quality Standards (NAAQS) and to control the quality of the state's air, including maintaining adequate visibility.

The first air pollution control act, known as the Clean Air Act of Texas, was passed by the Texas Legislature in 1965. In 1967, the Clean Air Act of Texas was superseded by a more comprehensive statute, the Texas Clean Air Act (TCAA), found in Article 4477-5, Vernon's Texas Civil Statutes. The legislature amended the TCAA in 1969, 1971, 1973, 1979, 1985, 1987, 1989, 1991, 1993, 1995, 1997, 1999, 2001, 2003, 2005, 2007, 2009, 2011, 2013, 2015, 2017, and 2019. In 1989, the TCAA was codified as Chapter 382 of the Texas Health and Safety Code.

Originally, the TCAA stated that the Texas Air Control Board (TACB) was the state air pollution control agency and was the principal authority in the state on matters relating to the quality of air resources. In 1991, the legislature abolished the TACB effective September 1, 1993, and its powers, duties, responsibilities, and functions were transferred to the Texas Natural Resource Conservation Commission (TNRCC). In 2001, the 77th Texas Legislature continued the existence of the TNRCC until September 1, 2013 and changed the name of the TNRCC to the TCEQ. In 2009, the 81st Texas Legislature, during a special session, amended section 5.014 of the Texas Water Code, changing the expiration date of the TCEQ to September 1, 2011, unless continued in existence by the Texas Sunset Act. In 2011, the 82nd Texas Legislature continued the existence of the TCEQ until 2023. With the creation of the TNRCC (and its successor the TCEQ), the authority over air quality is found in both the Texas Water Code and the TCAA. Specifically, the authority of the TCEQ is found in Chapters 5 and 7. Chapter 5, Subchapters A - F, H - J, and L, include the general provisions, organization, and general powers and duties of the TCEQ, and the responsibilities and authority of the executive director. Chapter 5 also authorizes the TCEQ to implement action when emergency conditions arise and to conduct hearings. Chapter 7 gives the TCEQ enforcement authority.

The TCAA specifically authorizes the TCEQ to establish the level of quality to be maintained in the state's air and to control the quality of the state's air by preparing and developing a general, comprehensive plan. The TCAA, Subchapters A - D, also authorize the TCEQ to collect information to enable the commission to develop an inventory of emissions; to conduct research and investigations; to enter property and examine records; to prescribe monitoring requirements; to institute enforcement proceedings; to enter into contracts and execute instruments; to formulate rules; to issue orders taking into consideration factors bearing upon health, welfare, social and economic factors, and practicability and reasonableness; to conduct hearings; to establish air quality control regions; to encourage cooperation with citizens' groups and other agencies and political subdivisions of the state as well as with industries and the federal government; and to establish and operate a system of permits for construction or modification of facilities.

Local government authority is found in Subchapter E of the TCAA. Local governments have the same power as the TCEQ to enter property and make inspections. They also

may make recommendations to the commission concerning any action of the TCEQ that affects their territorial jurisdiction, may bring enforcement actions, and may execute cooperative agreements with the TCEQ or other local governments. In addition, a city or town may enact and enforce ordinances for the control and abatement of air pollution not inconsistent with the provisions of the TCAA and the rules or orders of the commission.

In addition, Subchapters G and H of the TCAA authorize the TCEQ to establish vehicle inspection and maintenance programs in certain areas of the state, consistent with the requirements of the federal Clean Air Act; coordinate with federal, state, and local transportation planning agencies to develop and implement transportation programs and measures necessary to attain and maintain the NAAQS; establish gasoline volatility and low emission diesel standards; and fund and authorize participating counties to implement vehicle repair assistance, retrofit, and accelerated vehicle retirement programs.

#### Applicable Law

The following statutes and rules provide necessary authority to adopt and implement the state implementation plan (SIP). The rules listed below have previously been submitted as part of the SIP.

#### Statutes

All sections of each subchapter are included, unless otherwise noted.

TEXAS HEALTH & SAFETY CODE, Chapter 382 September 1, 2021

TEXAS WATER CODE September 1, 2021

#### Chapter 5: Texas Natural Resource Conservation Commission

Subchapter A: General Provisions

Subchapter B: Organization of the Texas Natural Resource Conservation Commission

Subchapter C: Texas Natural Resource Conservation Commission

Subchapter D: General Powers and Duties of the Commission

Subchapter E: Administrative Provisions for Commission

Subchapter F: Executive Director (except §§5.225, 5.226, 5.227, 5.2275, 5.231, 5.232, and 5.236)

Subchapter H: Delegation of Hearings

Subchapter I: Judicial Review

Subchapter J: Consolidated Permit Processing

Subchapter L: Emergency and Temporary Orders (§§5.514, 5.5145, and 5.515 only)

Subchapter M: Environmental Permitting Procedures (§5.558 only)

#### Chapter 7: Enforcement

Subchapter A: General Provisions (§§7.001, 7.002, 7.0025, 7.004, and 7.005 only)

Subchapter B: Corrective Action and Injunctive Relief (§7.032 only)

Subchapter C: Administrative Penalties

Subchapter D: Civil Penalties (except §7.109)

Subchapter E: Criminal Offenses and Penalties: §§7.177, 7.179-7.183

## Rules

All of the following rules are found in 30 Texas Administrative Code, as of the following latest effective dates:

Chapter 7: Memoranda of Understanding, §§7.110 and 7.119	December 13, 1996 and May 2, 2002
Chapter 19: Electronic Reporting Subchapter A: General Provisions Subchapter B: Electronic Reporting Requirements	March 15, 2007
Chapter 39: Public Notice Subchapter H: Applicability and General Provisions, §§39.402(a)(1) - (6), (8), and (10) - (12), 39.405(f)(3) and (g), (h)(1)(A) - (4), (6), (8) - (11), (i) and (j), 39.407, 39.409, 39.411(a), (e)(1) - (4)(A)(i) and (iii), (4)(B), (5)(A) and (B), and (6) - (10), (11)(A)(i) and (iii) and (iv), (11)(B) - (F), (13) and (15), and (f)(1) - (8), (g) and (h), 39.418(a), (b)(2)(A), (b)(3), and (c), 39.419(e), 39.420 (c)(1)(A) - (D)(i)(I) and (II), (D)(ii), (c)(2), (d) - (e), and (h), and Subchapter K: Public Notice of Air Quality Permit Applications, §§39.601 - 39.605	September 16, 2021
Chapter 55: Requests for Reconsideration and Contested Case Hearings; Public Comment, all of the chapter, except §55.125(a)(5) and (6)	September 16, 2021
Chapter 101: General Air Quality Rules	May 14, 2020
Chapter 106: Permits by Rule, Subchapter A	April 17, 2014
Chapter 111: Control of Air Pollution from Visible Emissions and Particulate Matter	November 12, 2020
Chapter 112: Control of Air Pollution from Sulfur Compounds	July 16, 1997
Chapter 114: Control of Air Pollution from Motor Vehicles	June 23, 2022
Chapter 115: Control of Air Pollution from Volatile Organic Compounds	July 22, 2021
Chapter 116: Control of Air Pollution by Permits for New Construction or Modification	July 1, 2021
Chapter 117: Control of Air Pollution from Nitrogen Compounds	March 26, 2020
Chapter 118: Control of Air Pollution Episodes	March 5, 2000
Chapter 122: §122.122: Potential to Emit	February 23, 2017

## SECTION VI: CONTROL STRATEGY

- A. Introduction (No change)
- B. Ozone (No change)
- C. Particulate Matter (No change)
- D. Carbon Monoxide (No change)
- E. Lead (No change)
- F. Oxides of Nitrogen (No change)
- G. Sulfur Dioxide (Revised)
  - 1. Harris County SO<sub>2</sub> State Implementation Plan (SIP) Revision (No change)
  - 2. Milam County SO<sub>2</sub> SIP Revision (No change)
  - 3. Attainment Demonstration for the Rusk-Panola 2010 SO<sub>2</sub> NAAQS Nonattainment Area (No change)
  - 4. Redesignation Request and Maintenance Plan for the Freestone-Anderson and Titus 2010 SO<sub>2</sub> NAAQS Nonattainment Areas (No change)
  - 5. Attainment Demonstration SIP Revision for the Howard County 2010 SO<sub>2</sub> NAAQS Nonattainment Area (No change)
  - 6. Attainment Demonstration SIP Revision for the Hutchinson County 2010 SO<sub>2</sub> NAAQS Nonattainment Area (New)
    - Chapter 1: General
    - Chapter 2: Emissions Inventories
    - Chapter 3: Control Strategy and Required Elements
    - Chapter 4: Attainment Demonstration Modeling
    - Chapter 5: Reasonable Further Progress
  - 7. Attainment Demonstration SIP Revision for the Navarro County 2010 SO<sub>2</sub> NAAQS Nonattainment Area (No change)
- H. Conformity with the National Ambient Air Quality Standards (No change)
- I. Site Specific (No change)
- J. Mobile Sources Strategies (No change)
- K. Clean Air Interstate Rule (No change)
- L. Transport (No change)
- M. Regional Haze (No change)

## TABLE OF CONTENTS

Executive Summary	
Section V-A: Legal Authority	
Section VI: Control Strategy	
List of Acronyms	
List of Tables	
List of Figures	
Chapter 1: General	
1.1 Background	
1.2 History of the Hutchinson County 2010 Sulfur Dioxide National Ambient Air Quality Standard Nonattainment Area	
1.3 Public Hearing and Comment Information	
1.4 Health Effects	
1.5 Stakeholder Participation	
1.6 Social and Economic Considerations	
1.7 Fiscal and Manpower Resources	
Chapter 2: Anthropogenic Emissions Inventories	
2.1 Introduction	
2.2 Point Sources	
2.2.1 2017 Base Year Point Source Emissions Inventory	
2.3 Area Sources	
2.3.1 2017 Base Year Area Source Emissions Inventory	
2.3.2 2026 Attainment Year Area Source Emissions Inventory	
2.4 Non-Road Mobile Sources	
2.4.1 NONROAD Model Categories	
2.4.1.1 2017 Base Year NONROAD Model Emissions Inventory	
2.4.1.2 2026 Attainment Year NONROAD Model Emissions Inventory	
2.4.2 Locomotives	
2.4.2.1 2017 Base Year Locomotive Emissions Inventory	
2.4.2.2 2026 Attainment Year Locomotive Emissions Inventory	
2.4.3 Airports	
2.4.3.1 2017 Base Year Airport Emissions Inventory	
2.4.3.2 2026 Attainment Year Airport Emissions Inventory	
2.5 On-Road Mobile Sources	
2.5.1 2017 Base Year On-Road Mobile Emissions Inventory	
2.5.2 2026 Attainment Year On-Road Mobile Emissions Inventory	
2.6 Emissions Inventory Improvement	

## 2.7 Emissions Summaries

### Chapter 3: Control Strategies and Required Elements

#### 3.1 Introduction

#### 3.2 Permanent and Enforceable Measures

##### 3.2.1 RACT and RACM Analysis

###### 3.2.1.1 Alternate Means of Control (AMOC)

##### 3.2.2 Variability Analysis

##### 3.2.3 Enforceable Control Measures

##### 3.2.4 Monitoring Network

#### 3.3 Contingency Measures

##### 3.3.1 Introduction

##### 3.3.2 Contingency Plan

#### 3.4 SIP Emissions Year for Emission Credit and Discrete Emission Credit Generation

#### 3.5 Additional Federal Clean Air Act Requirements

##### 3.5.1 Conformity Requirements

###### 3.5.1.1 General Conformity

###### 3.5.1.2 Transportation Conformity

##### 3.5.2 Nonattainment New Source Review Certification Statement

### Chapter 4: Attainment Demonstration Modeling

#### 4.1 Introduction

#### 4.2 Sources Overview

#### 4.3 Summary of Modeling methods

##### 4.4.1 Tokai Borger Carbon Black Plant

##### 4.4.2 Orion Borger Carbon Black Plant

##### 4.4.3 Agrium Borger Nitrogen Plant

##### 4.4.4 IACX Rock Creek Gas Plant

##### 4.4.5 Blackhawk Power Plant

##### 4.4.6 CP Chem Borger Plant

##### 4.4.7 Solvay Specialty Polymers Plant

##### 4.4.8 P66 Borger Refinery

##### 4.4.9 Other Sources

#### 4.5 Modeling Scenarios and Results

#### 4.6 Conclusion

#### 4.7 References

### Chapter 5: Reasonable Further Progress

#### 5.1 Introduction

#### 5.2 RFP demonstration

#### 5.3 Compliance Schedule

## LIST OF ACRONYMS

AEDT	Aviation Environmental Design Tool
AERR	Air Emissions Reporting Requirements
AMOC	alternate means of control
AMS	American Meteorological Society
AERMOD	American Meteorological Society/United States Environmental Protection Agency Regulatory Model
APU	auxiliary power unit
AQD	Air Quality Division
BPIPPRM	Building Profile Input Program for PRIME
CEMS	continuous emission monitoring system
CEV	critical emissions value
CFR	Code of Federal Regulations
DV	design value
EI	emissions inventory
EPA	United States Environmental Protection Agency
EPN	Emissions Point Number
ERG	Eastern Research Group
°F	degrees Fahrenheit
FAA	Federal Aviation Administration
FCAA	federal Clean Air Act
FCCU	Fluidized Catalytic Cracking Units
FM	Farm to Market
FMVCP	Federal Motor Vehicle Control Program
FR	<i>Federal Register</i>
FSA	full system audit
GSE	ground support equipment
hr	hour
HRSG	heat recovery steam generator
ICI	Industrial, Commercial, and Institutional
km	kilometers
lb	pound
MMBtu	one million British Thermal Units
MOVES	Motor Vehicle Emission Simulator

MSS	maintenance, startup, and shutdown
NAAQS	National Ambient Air Quality Standard
NEI	National Emissions Inventory
NSR	New Source Review
ppb	parts per billion
RACM	reasonably available control measures
RACT	reasonably available control technology
RFP	reasonable further progress
RN	Regulated Entity Reference Number
RRC	Railroad Commission of Texas
SIL	significant impact level
SIP	state implementation plan
SO <sub>2</sub>	sulfur dioxide
SRU	sulfur recovery unit
STARS	State of Texas Air Reporting System
TAC	Texas Administrative Code
TACB	Texas Air Control Board
TCAA	Texas Clean Air Act
TCEQ	Texas Commission on Environmental Quality (commission)
TexN2.2	Texas NONROAD version 2.2
THSC	Texas Health and Safety Code
TNRCC	Texas Natural Resource Conservation Commission
tpy	tons per year
TSD	technical support document
TTI	Texas A&M Transportation Institute
TWC	Texas Water Code
TX	Texas



## LIST OF TABLES

- Table 2-1: Hutchinson County Nonattainment Area Point Source SO<sub>2</sub> Emissions Sources by Industry Type
- Table 2-2: Hutchinson County Nonattainment Area SO<sub>2</sub> Emissions in TPY
- Table 4-1: Tokai Borger Carbon Black Plant Point Sources
- Table 4-2: Orion Borger Carbon Black Plant Point Sources
- Table 4-3: Agrium Borger Nitrogen Plant Point Sources
- Table 4-4: IACX Rock Creek Gas Plant Point Sources
- Table 4-5: Blackhawk Power Plant Point Sources
- Table 4-6: CP Chem Borger Plant Point Sources
- Table 4-7: CP Chem Borger Plant Area Sources
- Table 4-8: Solvay Specialty Polymers Plant Point Sources
- Table 4-9: P66 Borger Refinery Point Sources
- Table 4-10: P66 Borger Refinery Area Sources
- Table 4-11: P66 Borger Refinery FCCU MSS Tiered Emission Rates
- Table 4-12: P66 Borger Refinery Emission Caps

## LIST OF FIGURES

- Figure 4-1: Overview of the Hutchinson County 2010 SO<sub>2</sub> NAAQS Nonattainment Area
- Figure 4-2: Orion Borger Carbon Black Plant and Tokai Borger Carbon Black Plant Overview
- Figure 4-3: CP Chem Borger Plant, P66 Borger Refinery, Solvay Specialty Polymer Plant, and Blackhawk Power Plant Overview
- Figure 4-4: IACX Rock Creek Gas Plant Overview
- Figure 4-5: Agrium Borger Nitrogen Plant Overview
- Figure 4-6: Modeling Domain and Receptor Grid
- Figure 4-7: Modeling Results of Controlling Routine Scenario
- Figure 4-8: Modeling Results of Controlling MSS Scenario Number 16
- Figure 4-9: Modeling Results of Controlling MSS Scenario Number 94

## LIST OF APPENDICES

<u>Appendix</u>	<u>Appendix Name</u>
Appendix A	Stationary Point Source Sulfur Dioxide (SO <sub>2</sub> ) Emissions
Appendix B	Growth Factors for Area and Point Sources
Appendix C	Characterization of Oil and Gas Production Equipment and Develop a Methodology to Estimate Statewide Emissions
Appendix D	Industrial, Commercial, and Institutional (ICI) Fuel Use Study
Appendix E	TexN2.2 Updates for Compatibility with the US EPA MOVES3 Model
Appendix F	2020 Texas Statewide Locomotive and Rail Yard Emissions Inventory and 2011 through 2050 Trend Inventories
Appendix G	2020 Texas Statewide Airport Emissions Inventory and 2011 through 2050 Trend Inventories
Appendix H	MOVES3 On-road Inventory Development
Appendix I	Population Ratios for Non-Point Sources
Appendix J	Modeling Technical Support Document (TSD)

## CHAPTER 1: GENERAL

### 1.1 BACKGROUND

Information on the Texas State Implementation Plan (SIP) and a list of SIP revisions and other air quality plans adopted by the commission can be found on the [Texas State Implementation Plan](http://www.tceq.texas.gov/airquality/sip) webpage (<http://www.tceq.texas.gov/airquality/sip>) and on the [Texas Commission on Environmental Quality's](http://www.tceq.texas.gov/) (TCEQ) website (<http://www.tceq.texas.gov/>).

### 1.2 HISTORY OF THE HUTCHINSON COUNTY 2010 SULFUR DIOXIDE NATIONAL AMBIENT AIR QUALITY STANDARD NONATTAINMENT AREA

On June 22, 2010, the United States Environmental Protection Agency (EPA) revised the sulfur dioxide (SO<sub>2</sub>) National Ambient Air Quality Standards (NAAQS), adding a 75 parts per billion one-hour primary standard (75 *Federal Register* (FR) 35520). On June 2, 2011, Texas submitted a letter to the EPA recommending designations for all Texas counties, including an unclassifiable designation for Hutchinson County. An updated recommendation submitted to the EPA on April 20, 2012 did not change the state's initial recommendation for Hutchinson County.

On July 27, 2012, the EPA extended its deadline for area designations for the 2010 primary SO<sub>2</sub> standard for one year due to having insufficient information to make initial area designations at that time but intending to complete initial designations by June 3, 2013. On August 5, 2013, the EPA designated parts of 16 states as nonattainment for the 2010 SO<sub>2</sub> standard, effective October 4, 2013 (78 FR 47191). These were 29 areas that had monitored data indicating violations of the 2010 SO<sub>2</sub> NAAQS within the period from 2009 through 2011. The EPA was not prepared to issue designations for any remaining areas, so no areas of Texas were designated in Round 1 of the EPA's 2010 SO<sub>2</sub> standard designations.

The EPA's Data Requirements Rule (DRR) for the 2010 SO<sub>2</sub> NAAQS required that for areas to be characterized by monitoring for Round 4 designations, all source-oriented monitors used to inform designations were to be installed and operating by January 1, 2017. The TCEQ deployed an SO<sub>2</sub> monitor at the Borger Farm to Market 1559 site (air quality system number 482331073) on November 16, 2016, in Hutchinson County.

The EPA published final Round 4 designations on March 26, 2021, effective April 30, 2021 (86 FR 16055). These designations were based primarily on ambient monitoring data, including data from monitors installed pursuant to the DRR and in accordance with the EPA's September 5, 2019, memorandum to Regional Air Directors, *Area Designations for the 2010 Primary Sulfur Dioxide National Ambient Air Quality Standard - Round 4*.<sup>1</sup> Specifically defined portions of Howard, Hutchinson, and Navarro Counties were designated nonattainment, and Texas is required to submit attainment demonstrations for all three of these partial-county nonattainment areas to the EPA by October 30, 2022.

---

<sup>1</sup> [https://www.epa.gov/sites/default/files/2019-09/documents/round\\_4\\_so2\\_designations\\_memo\\_09-05-2019\\_final.pdf](https://www.epa.gov/sites/default/files/2019-09/documents/round_4_so2_designations_memo_09-05-2019_final.pdf)

This Hutchinson County SO<sub>2</sub> attainment demonstration, in accordance with FCAA, §172 general requirements and FCAA, §191 and §192 specific requirements, includes a comprehensive inventory of current SO<sub>2</sub> emissions; identification of existing federal and state controls; evaluation and provision for implementing all reasonably available control measures and reasonably available control technology; air quality dispersion modeling and analysis to evaluate projected air quality improvements from existing and new controls; a reasonable further progress (RFP) demonstration; contingency measures that will be implemented to achieve additional emissions reductions if the area fails to attain the NAAQS or meet RFP by the deadline; and the state's certification that current regulations provide the means to satisfy nonattainment New Source Review requirements for the Hutchinson County 2010 SO<sub>2</sub> nonattainment area.

This SIP revision for Hutchinson County is adopted concurrent with attainment demonstration SIP revisions for Howard County (Non-Rule Project No. 2021-010-SIP-NR) and Navarro County (Non-Rule Project No. 2021-012-SIP-NR) 2010 SO<sub>2</sub> NAAQS nonattainment areas and the associated 30 Texas Administrative Code Chapter 112, Subchapter F rules (Rule Project No. 2021-035-112-AI) that provide the control strategy applicable for each nonattainment area.

### **1.3 PUBLIC HEARING AND COMMENT INFORMATION**

The public comment period opened on April 15, 2022 and closed on June 2, 2022. Notice of public hearings regarding this and two concurrently proposed SO attainment demonstration SIP revisions and associated Chapter 112 rulemaking was published in the *Texas Register* on April 29, 2022. An abbreviated notice of the hearing scheduled specifically for this SIP and the rulemaking was published in the *Amarillo Globe News* and *Borger News-Herald* newspapers in English, and in the *El Mensajero* newspaper in Spanish. The commission held the public hearing for these proposals on May 19, 2022 at 6:00 p.m. in Borger, Texas, where comments were received regarding the rule but not the SIP.

Written comments were accepted via mail, fax, or through the eComments (<https://www6.tceq.texas.gov/rules/comments/>) system. During the comment period, TCEQ received written comments regarding this proposed SIP revision and the associated rules. Comments regarding the SIP proposal were received from the United States Environmental Protection Agency (EPA). Those comments are summarized and addressed in the Response to Comments for this SIP revision. Comments that were received regarding the associated Chapter 112 rulemaking proposal are summarized and addressed in the Response to Comments contained in the preamble to the adopted rules. This SIP revision reflects changes made in response to comments received on both the SIP and rulemaking proposals.

### **1.4 HEALTH EFFECTS**

Current scientific evidence links short-term exposures to SO<sub>2</sub>, ranging from five minutes to 24 hours, with an array of adverse respiratory effects including bronchoconstriction and increased asthma symptoms (75 FR 35520). These effects are particularly important for people with asthma symptoms at elevated ventilation rates (e.g., while exercising or playing) and other at-risk populations including children and elderly people.

Sulfur oxides such as SO<sub>2</sub> can react with other compounds in the atmosphere to form small particles. These particles have the potential to penetrate deeply into sensitive parts of the lungs, and at high levels, can contribute to respiratory disease, such as emphysema and bronchitis. They may aggravate existing heart disease, leading to increased hospital admissions and possibly premature death (75 FR 35520). However, the health effects associated with current ambient levels of particulate matter are less clear. Although some observational epidemiology studies have reported statistical associations between such health effects and ambient particulate matter, a clear mechanism of action has yet to be identified. Furthermore, these reported effects vary widely with geographical location as well as with size and composition of the particulate matter (EPA/600/R-08/139F sections 2.1.1 and 2.2.2).

### **1.5 STAKEHOLDER PARTICIPATION**

The TCEQ and representatives of significant SO<sub>2</sub> emissions sources located in the Hutchinson County 2010 SO<sub>2</sub> NAAQS nonattainment area held regular meetings during the development of this SIP revision to discuss modeling, control strategies, contingency measures, and development of the associated Chapter 112 rules. The TCEQ, representatives of significant SO<sub>2</sub> emissions sources in the Hutchinson County nonattainment area, and the EPA also held meetings to discuss modeling details.

### **1.6 SOCIAL AND ECONOMIC CONSIDERATIONS**

No significant fiscal implications are anticipated for the TCEQ or other units of state or local governments from administration or enforcement of the associated rules. All controls to reach attainment will be borne by the emissions sources identified in this SIP revision and Chapter 112, Subchapter F of the associated rules. As such, any economic impacts will be limited to each of the SO<sub>2</sub> sources associated with this SIP revision and associated rules. The rules are expected to have significant fiscal impact to the affected sources in Hutchinson County, and those impacts are discussed in the preamble to the rules. The citizens living and working within the nonattainment area will benefit from reduced SO<sub>2</sub> emissions.

### **1.7 FISCAL AND MANPOWER RESOURCES**

The TCEQ determined that its fiscal and manpower resources are adequate and will not be adversely affected through the implementation of this plan.

## CHAPTER 2: ANTHROPOGENIC EMISSIONS INVENTORIES

### 2.1 INTRODUCTION

The federal Clean Air Act (FCAA) requires that attainment demonstration emissions inventories (EI) be prepared from all sources within a planning area (57 *Federal Register* (FR) 13498, April 16, 1992). The EI must be a comprehensive, accurate, and current inventory of actual emissions for all sources in the nonattainment area plus any sources located outside the nonattainment area that may affect attainment.

The Texas Commission on Environmental Quality (TCEQ) maintains an inventory of current information for sources of sulfur dioxide (SO<sub>2</sub>) emissions that identifies the types of emissions sources present in an area, the amount of each pollutant emitted, and the types of processes and control devices employed at each site or source category. The total anthropogenic inventory of SO<sub>2</sub> emissions for an area is derived from estimates developed for three general categories of emissions sources: point, area, and mobile (both non-road and on-road). All inventories are developed in accordance with the Environmental Protection Agency's Air Emissions Reporting Requirements (AERR) (40 Code of Federal Regulations (CFR) Part 51, Subpart A).

This chapter discusses general EI and attainment year emissions development for each of the anthropogenic source categories. Chapter 4: *Attainment Demonstration Modeling* details specific EIs and emissions inputs developed for the Hutchinson County 2010 SO<sub>2</sub> National Ambient Air Quality Standard (NAAQS) nonattainment area dispersion modeling.

The most current periodic EI data were analyzed as part of this state implementation plan (SIP) revision. The TCEQ chose 2017 as the base year for most of the analyses presented in this chapter because it was the most recent periodic inventory year available for all source categories to develop an EI for this SIP revision. Details on the projection methods to forecast 2017 base year emissions to the 2026 attainment year for all source categories are documented in this chapter.

### 2.2 POINT SOURCES

Stationary point source data are collected annually from sites that meet the reporting requirements of 30 Texas Administrative Code (TAC) §101.10. The TCEQ provides detailed reporting instructions and tools for completing and submitting an EI. Companies submit EI data using a Web-based system called the Annual Emissions Inventory Report System. Companies are required to report emissions data and to provide sample calculations used to determine the emissions. Information characterizing the process equipment, the abatement units, and the emission points is also required. As required by FCAA, §182(a)(3)(B) and the United States Environmental Protection Agency (EPA) guidance, a company representative certifies that reported emissions are true, accurate, and fully represent emissions that occurred during the calendar year to the best of the representative's knowledge.

All data submitted in the EI are reviewed for quality assurance purposes and then stored in the State of Texas Air Reporting System (STARS) database. The TCEQ's [Point Source Emissions Inventory](https://www.tceq.texas.gov/airquality/point-source-ei/psei.html) webpage (<https://www.tceq.texas.gov/airquality/point-source-ei/psei.html>) contains guidance documents and historical point source

emissions data. Additional information is available upon request from the TCEQ's Air Quality Division.

Eight point-source sites are in the Hutchinson County 2010 SO<sub>2</sub> NAAQS nonattainment area. Details about these point source sites are provided in Table 2-1: *Hutchinson County Nonattainment Area Point Source SO<sub>2</sub> Emissions Sources by Industry Type*.

The carbon black, industrial organic chemicals, natural gas processing, and petroleum refining industries emit over 99% of the 2017 base year SO<sub>2</sub> emissions in the Hutchinson County 2010 SO<sub>2</sub> NAAQS nonattainment area.

**Table 2-1: Hutchinson County Nonattainment Area Point Source SO<sub>2</sub> Emissions Sources by Industry Type**

Company	Site	Point Source Name	Regulated Entity Reference Number (RN)	Industry Type
Orion Engineered Carbons LLC	Borger Carbon Black Plant	Orion Borger Carbon Black Plant	RN100209659	Carbon Black
Tokai Carbon CB LTD	Borger Carbon Black Plant	Tokai Borger Carbon Black Plant	RN100222413	Carbon Black
Chevron Phillips Chemical Company LP	Borger Plant	CP Chem Borger Plant	RN102320850	Industrial Organic Chemicals
Solvay Specialty Polymers USA LLC	Solvay Specialty Polymers USA Site	Solvay Specialty Polymers Plant	RN107829640	Industrial Organic Chemicals
Phillips 66 Company	P66 Borger Refinery	P66 Borger Refinery	RN102495884	Petroleum Refining
IACX Rock Creek LLC	Rock Creek Gas Plant	IACX Rock Creek Gas Plant	RN100216613	Natural Gas Processing
Borger Energy Associates LP	Blackhawk Power Plant	Blackhawk Power Plant	RN100217298	Natural Gas Electric Generating Unit
Agrium US Inc LLC	Borger Nitrogen Operations	Agrium Borger Nitrogen Plant	RN101865715	Fertilizer Plant

### 2.2.1 2017 Base Year Point Source Emissions Inventory

The TCEQ extracted the 2017 point-source inventory data from STARS on December 8, 2021. The extracted data include reported annual (routine) emissions of SO<sub>2</sub> in tons per year (tpy) for the eight point sources located in the Hutchinson County 2010 SO<sub>2</sub> NAAQS nonattainment area.

The 2017 base year point source SO<sub>2</sub> EI is summarized in Table 2-2: *Hutchinson County Nonattainment Area SO<sub>2</sub> Emissions*.



### **2.2.2 2026 Attainment Year Point Source Emissions Inventory**

With adoption of this SIP revision and the associated 30 TAC Chapter 112, Subchapter F rules (Rule Project No. 2021-035-112-AI), the CP Chem Borger Plant, IACX Rock Creek Gas Plant, Orion Borger Carbon Black Plant, P66 Borger Refinery, and Tokai Borger Carbon Black Plant will be subject to the TCEQ SO<sub>2</sub> emissions regulations required for attainment. The 2026 forecasted controlled actual emissions were determined from historical emissions and/or the application of enforceable requirements from consent decrees, rules, modeled emissions rates, and/or permits to affected sources.

For sources subject to enforceable requirements that have annual permitted limits lower than the historical average, the 2026 forecasted controlled emissions were projected to the annual permitted limits. For sources that did not report point source emissions inventory data, the 2026 forecasted emissions were determined from modeled emissions rates or rule limits. The 2026 attainment year SO<sub>2</sub> emissions inventories increased for the P66 Borger Refinery (approximately 40 tons) and the IACX Rock Creek Gas Plant (approximately 12 tons) due to emissions from sources that were not built and/or did not report routine emissions in the 2017 base year emissions inventory.

For other sources, the 2026 forecasted emissions were determined from historical emissions. The historical emissions were the average of the reported 2017 through 2020 annual point source inventory SO<sub>2</sub> emissions. The TCEQ extracted the 2017 through 2020 point source inventory data from STARS on December 8, 2021. The extracted data include reported annual (routine) SO<sub>2</sub> emissions in tpy for point sources located in the Hutchinson County 2010 SO<sub>2</sub> NAAQS nonattainment area. The 2017 through 2020 emissions average was held constant to project the 2026 forecasted emissions.

Appendix A: *Stationary Point Sources Sulfur Dioxide (SO<sub>2</sub>) Emissions* provides details on the 2017 base year SO<sub>2</sub> emissions, the 2018 through 2020 point source inventory SO<sub>2</sub> emissions, and the 2026 projected SO<sub>2</sub> emissions by emissions point number.

The 2026 attainment year point source SO<sub>2</sub> EIs are summarized in Table 2-2.

### **2.3 AREA SOURCES**

Stationary emissions sources that do not meet the reporting requirements for point sources are classified as area sources. Area sources are small-scale stationary industrial, commercial, and residential sources that use materials or perform processes that generate emissions. Examples of typical SO<sub>2</sub> emissions sources include upstream oil and gas engines and heaters, stationary source fossil fuel combustion at residences and businesses, outdoor refuse burning, and agricultural crop burning.

EPA rules and guidance require area source emissions to be calculated as county-wide totals rather than as individual sources. Area source emissions are typically calculated by multiplying an EPA- or TCEQ-developed emissions factor (emissions per unit of activity) by the appropriate activity or activity surrogate responsible for generating emissions. Population is one of the more commonly used activity surrogates for area source calculations. Other activity data that are commonly used include the amount of

gasoline sold in an area, employment by industry type, and crude oil and natural gas production.

The emissions data for each of the area source categories are developed, quality assured, stored in the Texas Air Emissions Repository database system, and compiled to develop the statewide area source EI.

### **2.3.1 2017 Base Year Area Source Emissions Inventory**

The 2017 area source EIs were developed using EPA-generated EIs; TCEQ-contracted projects to develop EIs; TCEQ staff projects to develop EIs; and projecting 2014 EIs by applying growth factors derived from Eastern Research Group (ERG) study data, the [Economy and Consumer Credit Analytics](http://www.economy.com/default.asp) website (<http://www.economy.com/default.asp>), and the United States Energy Information Administration's *Annual Energy Outlook* publication. The documentation for the development of the ERG study projection factors is provided in Appendix B: *Growth Factors for Area and Point Sources*.

The EPA developed EIs for states to use for many area source categories as part of the National Emissions Inventory (NEI). The states access these individual EIs through the [EPA's NEI](https://www.epa.gov/air-emissions-inventories/2017-national-emissions-inventory-nei-data) website (<https://www.epa.gov/air-emissions-inventories/2017-national-emissions-inventory-nei-data>). These source categories include but are not limited to industrial coatings; degreasing; residential, commercial/institutional, and industrial fuel use; commercial cooking; aviation fuel use; and consumer products. For some source categories, the TCEQ developed state-specific emissions estimates by acquiring current state-specific activity data and applying appropriate emissions factors. These source categories include but are not limited to gasoline storage tanks, structure fires, dry cleaners, and automobile fires.

The TCEQ committed significant resources to improve the oil and gas area source inventory categories for the 2017 base year EI. The improvements included the development and refinement of a state-specific oil and gas area source emissions calculator. This oil and gas area source emissions calculator uses county-level production and local equipment activity data with local emissions requirements to estimate emissions from individual production categories including compressor engines, condensate and oil storage tanks, loading operations, heaters, and dehydrators. The documentation for the development of the oil and gas emissions calculator is provided in Appendix C: *Characterization of Oil and Gas Production Equipment and Develop a Methodology to Estimate Statewide Emissions*.

Another significant improvement made for the 2017 base year EI was the development of a Texas-specific industrial, commercial, and institutional (ICI) combustion emissions calculator. This improved upon the default calculations and parameters provided by the EPA for these fuel combustion sources. The documentation for the development of the ICI combustion emissions calculator is provided in Appendix D: *Industrial, Commercial, and Institutional (ICI) Fuel Use Study*.

Quality assurance of area source emissions involves ensuring that the activity data used for each category are current and valid. Data such as current population figures, fuel usage, and material usage were updated and the EPA guidance on emissions

factors was used. Other routine efforts were also implemented, such as checking calculations for errors and conducting reasonableness and completeness checks.

The 2017 base year area source SO<sub>2</sub> EI is summarized in Table 2-2.

### **2.3.2 2026 Attainment Year Area Source Emissions Inventory**

Since 2017 was the most recently available periodic EI year, the TCEQ designated the 2017 EI as the starting point for the 2026 attainment year EI projections of all area source categories except oil and gas sources. Since more recent activity data are available for oil and gas sources, the area source oil and gas EI was updated using Texas Railroad Commission 2020 production data. These newer data reflect growth that has occurred since the 2017 base year and are more representative of recent operations. This 2020 oil and gas area source EI was used as the projection base year for the 2026 attainment year EI.

The updated 2026 attainment year EI for the area source categories were developed using projection factors derived from Appendix B. The study in this appendix contains individual projection factors for each source category and for each forecasting year. This projection method is the EPA standard and accepted methodology for developing future-year EIs.

No controls were incorporated into the area source attainment year inventories.

The 2026 attainment year area source SO<sub>2</sub> EI is summarized in Table 2-2.

## **2.4 NON-ROAD MOBILE SOURCES**

Non-road vehicles do not normally operate on roads or highways and are often referred to as off-road or off-highway vehicles. Non-road emissions sources include agricultural equipment, commercial and industrial equipment, construction and mining equipment, lawn and garden equipment, aircraft and airport equipment, and locomotives.

For this SIP revision, EIs for non-road sources were developed for the following subcategories: NONROAD model categories, airports, and locomotives. The airport subcategory includes estimates for total emissions from the aircraft, auxiliary power units (APU), and ground support equipment (GSE) subcategories added together and presented as a total. The following sections describe the emissions estimation methods used for the non-road mobile source subcategories.

The 2017 base year and 2026 attainment year non-road mobile source SO<sub>2</sub> EIs are summarized in Table 2-21.

### **2.4.1 NONROAD Model Categories**

The Motor Vehicle Emission Simulator 3 (MOVES3) model is the EPA's latest mobile source emissions model for estimating non-road source category emissions. The TCEQ used the most recent Texas-specific utility for the non-road mobile component of the MOVES3 model, called Texas NONROAD version 2.2 (TexN2.2), to calculate emissions from all non-road mobile source equipment and recreational vehicles, except for airports and locomotives.

Because emissions for airports and locomotives are not included in either the MOVES3 model or the TexN2.2 utility, the emissions for these categories are estimated using other EPA-approved methods and guidance.

The TCEQ conducted equipment survey studies that focused on various equipment categories operating in different areas of Texas, including diesel construction equipment, liquid propane gas-powered forklifts, and agricultural equipment. The resulting survey data contributed to input updates to the TexN utility to estimate non-road emissions more accurately for the State of Texas instead of using the national default values in the EPA's MOVES model.

The TexN2 utility was recently updated to be compatible with the MOVES3 model. In addition, enhancements were added to the utility to streamline the way TexN2 handles alternative equipment scrappage curves and generates county databases for submittal for the AERR and NEI. The resulting new TexN2 utility is called TexN2.2. More information regarding the updates and development for the TexN2.2 utility is provided in the ERG report in Appendix E: *TexN2.2 Updates for Compatibility with the US EPA MOVES3 Model*.

#### 2.4.1.1 2017 Base Year NONROAD Model Emissions Inventory

TCEQ staff developed the 2017 base year non-road model category SO<sub>2</sub> emissions for this SIP revision using the TexN2.2 utility set for fully controlled run scenarios that used 2017 meteorological input data.

#### 2.4.1.2 2026 Attainment Year NONROAD Model Emissions Inventory

TCEQ staff developed the 2026 attainment year non-road model category SO<sub>2</sub> emissions for this SIP revision using the TexN2.2 utility set for fully controlled run scenarios that used 2017 meteorological input data.

### **2.4.2 Locomotives**

The locomotive EIs were developed from a TCEQ-commissioned study using EPA-accepted EI development methods. The locomotive EIs include line haul and yard emissions activity data from all Class I and III locomotive activity and emissions by rail segment (currently, there are no Class II operators in Texas). The method and procedures used to develop the locomotive EIs for this SIP revision are detailed in the Texas A&M Transportation Institute (TTI) report in Appendix F: *2020 Texas Statewide Locomotive and Rail Yard Emissions Inventory and 2011 through 2050 Trend Inventories*.

#### 2.4.2.1 2017 Base Year Locomotive Emissions Inventory

The 2017 base year locomotive SO<sub>2</sub> emissions for this SIP revision were taken from the 2017 trend EI developed as part of the TTI report in Appendix F.

#### 2.4.2.2 2026 Attainment Year Locomotive Emissions Inventory

The 2026 attainment year locomotive SO<sub>2</sub> emissions for this SIP revision were taken from the 2026 trend EI developed as part of the TTI report in Appendix F.

### **2.4.3 Airports**

The airport EIs were developed from a TCEQ-commissioned study using the Federal Aviation Administration (FAA) Aviation Environmental Design Tool (AEDT). The AEDT is the most recent FAA model for estimating airport emissions and replaced the FAA's Emissions and Dispersion Modeling System. The airport emissions categories used for this SIP revision included aircraft (commercial air carriers, air taxis, general aviation, and military), APU, and GSE operations.

The method and procedures used to develop the airport EIs for this SIP revision are provided in the TTI report in Appendix G: *2020 Texas Statewide Airport Emissions Inventory and 2011 through 2050 Trend Inventories*.

#### **2.4.3.1 2017 Base Year Airport Emissions Inventory**

The 2017 base year airport SO<sub>2</sub> emissions for this SIP revision were taken from the 2017 statewide airport trend EI developed as part of the ERG report in Appendix G.

#### **2.4.3.2 2026 Attainment Year Airport Emissions Inventory**

The 2026 attainment year airport SO<sub>2</sub> emissions for this SIP revision were taken from the 2026 statewide airport trend EI developed as part of the ERG report in Appendix G.

### **2.5 ON-ROAD MOBILE SOURCES**

On-road mobile emissions sources consist of automobiles, trucks, motorcycles, and other motor vehicles traveling on public roadways as well as off-network emissions occurring outside public roadways. On-road mobile source SO<sub>2</sub> emissions are usually categorized as combustion-related emissions. Combustion-related emissions are estimated for vehicle engine exhaust. To calculate emissions, both the rate of emissions per unit of activity and the number of units of activity must be determined.

Updated on-road EIs for this SIP revision were developed using the inventory mode of the EPA's mobile source emissions model, MOVES3. During a MOVES3 inventory mode run, emissions rates are first calculated and then applied to user-provided activity levels or EPA MOVES default activity levels. The MOVES3 model may be run using national default information or the default information may be modified to simulate specific data, such as the control programs, driving behavior, meteorological conditions, and vehicle characteristics. Because modifications to the national default values influence the emissions factors calculated internally by the MOVES3 model; therefore, parameters that are used in TCEQ EI development reflect local conditions to the extent that local values are available.

#### **2.5.1 2017 Base Year On-Road Mobile Emissions Inventory**

TCEQ staff developed the 2017 base year on-road mobile source category SO<sub>2</sub> emissions for this SIP revision using the MOVES3 model. Values that reflect local conditions as well as local activity levels were used when available. Detailed information on the inputs and data sources used in the on-road EI development are provided in Appendix H: *MOVES3 On-road Inventory Development*.

The Federal Motor Vehicle Control Program (FMVCP) provides on-going emissions reductions from mobile sources. The FMVCP includes vehicle emission certification standards as well as corresponding limits on fuel sulfur content. The limits on sulfur

content for diesel and gasoline fuels contribute to reduced SO<sub>2</sub> emissions from mobile sources.

The 2017 base year on-road mobile source SO<sub>2</sub> EI is summarized in Table 2-2.

### 2.5.2 2026 Attainment Year On-Road Mobile Emissions Inventory

TCEQ staff developed the 2026 attainment year on-road mobile source category SO<sub>2</sub> emissions for this SIP revision using the MOVES3 model. Values reflect local conditions as well as local activity levels when available, excluding meteorology and fuel inputs, which were held constant at 2017 levels. For more detailed information on the inputs and data sources used in the on-road EI development, see Appendix H.

The 2026 attainment year on-road mobile source SO<sub>2</sub> EI is summarized in Table 2-1.

## 2.6 EMISSIONS INVENTORY IMPROVEMENT

The TCEQ EI reflects years of emissions data improvement, including extensive point and area source inventory reconciliation with ambient emissions monitoring data. Reports detailing recent TCEQ EI improvement projects are provided at the TCEQ's [Air Quality Research and Contract Projects](https://www.tceq.texas.gov/airquality/airmod/project/pj.html) webpage (https://www.tceq.texas.gov/airquality/airmod/project/pj.html).

## 2.7 EMISSIONS SUMMARIES

The 2017 base year and 2026 attainment year Hutchinson County 2010 SO<sub>2</sub> NAAQS nonattainment area SO<sub>2</sub> emissions for this SIP revision are summarized in Table 2-2. In this table, annual routine emissions for all source categories are provided in tpy. These emissions summaries demonstrate that the point source category contributes the largest portion (over 99%) of SO<sub>2</sub> emissions in the Hutchinson County 2010 SO<sub>2</sub> NAAQS nonattainment area.

The 2026 attainment year EI presented in this chapter is not the modeled EI. For more details on the modeled EI, please consult Chapter 4: *Attainment Demonstration Modeling*.

Per EPA EI rules and guidance, the area, non-road mobile, and on-road mobile sources emissions are typically calculated as county-wide totals for Hutchinson County. To obtain area, non-road mobile, and on-road mobile source emissions for the Hutchinson County 2010 SO<sub>2</sub> NAAQS nonattainment area for this SIP revision, county-level emissions were ratioed based on the 2010 population located within the portions of the nonattainment boundaries for the area. Details of the population ratios applied to the county-wide totals for the area, non-road mobile, and on-road mobile source categories are presented in Appendix I: *Population Ratios for Non-Point Sources*.

**Table 2-2: Hutchinson County Nonattainment Area SO<sub>2</sub> Emissions in TPY**

Source Category	2017 Base Year Reported Emissions (TPY)	2026 Attainment Year Emissions (TPY)
Point - Orion Borger Carbon Black Plant	3,706.09	481.96

<b>Source Category</b>	<b>2017 Base Year Reported Emissions (TPY)</b>	<b>2026 Attainment Year Emissions (TPY)</b>
Point - Tokai Borger Carbon Black Plant	6,949.59	5,014.26
Point - CP Chem Borger Plant	530.11	441.58
Point - Solvay Specialty Polymers Plant	0.19	0.15
Point - P66 Borger Refinery	204.89	244.39
Point - IACX Rock Creek Gas Plant	184.14	196.43
Point - Blackhawk Power Plant	71.80	70.88
Point - Agrium Borger Nitrogen Plant	0.73	0.90
Area - Other than Oil and Gas	4.51	8.10
Area - Oil and Gas	0.80	0.49
On-road Mobile	0.84	0.71
Non-road Mobile	0.30	0.29
<b>Total</b>	<b>11,653.99</b>	<b>6,460.14</b>

## CHAPTER 3: CONTROL STRATEGIES AND REQUIRED ELEMENTS

### 3.1 INTRODUCTION

On March 26, 2021, the United States Environmental Protection Agency (EPA) finalized a rule designating a portion of Hutchinson County as nonattainment for the 2010 sulfur dioxide (SO<sub>2</sub>) National Ambient Air Quality Standard (NAAQS), with a rule effective date of April 30, 2021 (86 *Federal Register* (FR) 16055). The SO<sub>2</sub> nonattainment area designated by the EPA includes the following sites of SO<sub>2</sub> emissions, owned and operated by the following regulated entities:<sup>2</sup>

- Tokai's Borger Carbon Black Plant site (Tokai Borger Carbon Black Plant) owned by Tokai Carbon CB LTD (Tokai);
- Orion's Borger Carbon Black Plant site (Orion Borger Carbon Black Plant) owned by Orion Engineered Carbons LLC (Orion);
- Agrium US Borger Nitrogen Operations site (Agrium Borger Nitrogen Plant) owned by Agrium US INC (Agrium);
- IACX's Rock Creek Gas Plant site (IACX Rock Creek Gas Plant) owned by IACX Rock Creek LLC (IACX);
- Borger Energy's Blackhawk Power Plant (Blackhawk Power Plant) owned by Borger Energy Associates LP (Borger Energy);
- Chevron Phillips Chemical Borger Plant (CP Chem Borger Plant) owned by Chevron Phillips Chemical Company LP (CP Chem);
- Solvay Specialty Polymers USA site (Solvay Specialty Polymers Plant) owned by Solvay Specialty Polymers USA LLC (Solvay); and
- Phillips 66's Borger Refinery (P66 Borger Refinery) owned by WRB Refining LP and operated by Phillips 66 Company (Phillips 66).

The CP Chem Borger Plant manufactures specialty chemicals and plastics with various industrial applications. The IACX Rock Creek Gas Plant is a natural gas gathering plant. The Tokai Borger Carbon Black Plant and Orion Borger Carbon Black Plant manufacture carbon black for use in various industrial applications, such as tires. The P66 Borger Refinery processes primarily medium sour crude oil and natural gas oil. The Solvay Specialty Polymers Plant manufactures polymers and composite materials, various chemicals, and various consumer and industrial solutions. The Agrium Borger Nitrogen Plant specializes in the manufacture of nitrogen products for agricultural, industrial, and feed customers. The Blackhawk Power Plant is an electric power generating station. All eight sites located in the area designated nonattainment for the 2010 SO<sub>2</sub> NAAQS are covered under this state implementation plan (SIP) revision. Only five of the eight sites, the CP Chem Borger Plant, the IACX Rock Creek Gas Plant, the Orion Borger Carbon Black Plant, the P66 Borger Refinery, and the Tokai Borger Carbon Black Plant, are included in the associated 30 Texas Administrative Code (TAC) Chapter 112, Subchapter F rules (Rule Project No. 2021-035-112-AI). The EPA has historically used pollutant-specific concentration levels, known as significant impact levels (SIL), to identify the degree of air quality impact that causes or contributes to a violation of the NAAQS or a New Source Review (NSR) Prevention of Significant Deterioration permit

---

<sup>2</sup> Although referenced in various forms and sometimes shortened forms in the proposal SIP revision and associated proposed rules, for adoption, the commission has revised all references to consistently refer to the facilities and the owners of those facilities in the Hutchinson nonattainment area.



program increment. As a result, the Texas Commission on Environmental Quality (TCEQ) used the SIL for SO<sub>2</sub> of 3 parts per billion (ppb) or 7.85 micrograms per cubic meter (µg/m<sup>3</sup>) to determine which emission points were most likely to be significant contributors to nonattainment. Although the screening level was used to determine which sources have enforceable limits in the rules, no sources were screened out from the attainment demonstration modeling. The commission included many small emission sources in its modeling in response to discussion with EPA Region 6 and to ensure that the modeling was representative and conservative. The emissions from these sources were based on the represented permit-enforceable emission limits, as stated in 40 Code of Federal Regulations (CFR) Part 51, Appendix W, Section 2.1.c: “Appropriate model input data should be available before an attempt is made to evaluate or apply an air quality model. Assuming the data are adequate, the greater the detail with which a model considers the spatial and temporal variations in meteorological conditions and permit-enforceable emissions, the greater the ability to evaluate the source impact and to distinguish the effects of various control strategies.” Additionally, 40 CFR Part 51, Appendix W, Section 9.2.3.1, *Considerations in Developing Emission Limits*, does not require that every emission source that is modeled have a corresponding SIP emission limit. Section 9.2.3.1 states that “[e]missions limits and resulting control requirements should be established to provide for compliance with each applicable NAAQS ... [t]he appropriate reviewing authority ... and appropriate EPA guidance should be consulted to determine the appropriate emission limits on a case-by-case basis.”

Through air dispersion modeling, the TCEQ identified the SO<sub>2</sub> emission rates that modeled attainment by using an iterative process that included modeling and consultation with the affected sites in the nonattainment area. The associated Chapter 112, Subchapter F rules specify the SO<sub>2</sub> emission rates determined necessary to model attainment of the 2010 SO<sub>2</sub> NAAQS in the Hutchinson County nonattainment area.

Federal Clean Air Act (FCAA), §172(c) establishes planning requirements for attainment demonstration SIP revisions for areas that do not meet the NAAQS for a criteria pollutant. This chapter describes the statutory requirements under FCAA, §172(c)(1) for reasonably available control measures (RACM) including reasonably available control technology (RACT); under FCAA, §172(c)(6) for enforceable emissions limitations and control measures; under FCAA, §173(a) for a nonattainment NSR permit program; and under FCAA, §172(c)(9) for an adequate contingency plan for the nonattainment area.

### **3.2 PERMANENT AND ENFORCEABLE MEASURES**

The SIP revision describes a control strategy that consists of permanent, quantifiable, and enforceable emission reductions at the CP Chem Borger Plant; the IACX Rock Creek Gas Plant; the Orion Borger Carbon Black Plant; the P66 Borger Refinery; and the Tokai Borger Carbon Black Plant necessary to demonstrate attainment of the 2010 SO<sub>2</sub> NAAQS. The emission rates and control measures must be accompanied by appropriate methods and conditions to determine compliance with the respective emission limit and must be quantifiable (i.e., a specific amount of emission reduction can be ascribed to the measures), fully enforceable (i.e., specifying clear, unambiguous and measurable requirements for which compliance can be practicably determined), replicable (i.e., the procedures for determining compliance are sufficiently specific and non-subjective so that two independent entities applying the procedures will obtain

the same result), and accountable (i.e., source-specific limits must be permanent and must reflect the assumptions used in the attainment demonstration). This SIP revision and the associated 30 Texas Administrative Code (TAC) Chapter 112, Subchapter F rules provide the mechanism to make SO<sub>2</sub> emissions reductions quantifiable, establish enforceable requirements for which compliance with the emission rates is determined in a replicable manner, and make permanent the emission rates established through the required SIP elements.

### 3.2.1 RACT and RACM Analysis

FCAA, §172(c)(1) requires that nonattainment areas provide for the implementation of all RACM, including RACT, as expeditiously as practicable and provide for attainment of the NAAQS. The SIP must provide for attainment of the NAAQS based on SO<sub>2</sub> emission reductions from control measures that are permanent and enforceable. RACT is defined in 40 Code of Federal Regulations (CFR) §51.100(o) as devices, systems, process modifications, or other apparatus or techniques that are reasonably available taking into account what is necessary to attain and maintain the NAAQS while considering the social environmental, and economic impact of such controls. The EPA's *Guidance for 1-Hour SO<sub>2</sub> Nonattainment Area SIP Submissions* (2014 SO<sub>2</sub> SIP guidance) maintains previous EPA guidance regarding the definition of RACT.<sup>3</sup> The 2014 SO<sub>2</sub> SIP guidance also provides that states should consider all RACM, including RACT, that can be implemented in light of the attainment needs of the affected area.

Modeling demonstrated that the modeled contribution of all sources at the Solvay Specialty Polymers Plant, the Agrium Borger Nitrogen Plant, the Blackhawk Power Plant, and some sources at the CP Chem Borger Plant, the IACX Rock Creek Gas Plant, the Orion Borger Carbon Black Plant, the P66 Borger Refinery, and the Tokai Borger Carbon Black Plant, were below the SO<sub>2</sub> SIL of 3 ppb (7.85 µg/m<sup>3</sup>), so those sources were determined not to have a significant impact in the nonattainment area. Because the TCEQ determined that those sources do not have a significant impact, RACM, including RACT, are not required to be applied to those sources as part of the overall control strategy to reduce SO<sub>2</sub> emissions and attain and maintain the 2010 SO<sub>2</sub> NAAQS. The sources at the Tokai Borger Carbon Black Plant, Orion Borger Carbon Black Plant, IACX Rock Creek Gas Plant, CP Chem Borger Plant, and P66 Borger Refinery that were identified by modeling to significantly contribute to nonattainment in the Hutchinson County 2010 SO<sub>2</sub> NAAQS nonattainment area and are the only sources for which RACM, including RACT, are required to be applied under FCAA §172(c)(1). While Chapter 4 specifies all the sources modeled at these sites, below is the list of sources that were determined to have significant contribution to the nonattainment and required corresponding control measures. Sources modeled and specified in Chapter 4 but listed below did not have significant modeled contribution to nonattainment and hence are not in the rule

The CP Chem Borger Plant will implement RACM, including RACT, through implementation of final SO<sub>2</sub> emissions limits on the following sources at the site:

---

<sup>3</sup> EPA, April 23, 2014. [Guidance for 1-Hour SO<sub>2</sub> Nonattainment Area SIP Submissions](https://www.epa.gov/sites/production/files/2016-06/documents/20140423guidance_nonattainment_sip.pdf) (https://www.epa.gov/sites/production/files/2016-06/documents/20140423guidance\_nonattainment\_sip.pdf).

- A sulfolene handling area, including a building and trailer with the following limitations:
  - An SO<sub>2</sub> limit of 0.98 pound per hour (lb/hr) for the sulfolene building and trailers designated as Emission Point Number (EPN) F-M2A\_1); and
  - An SO<sub>2</sub> limit of 1.00 lb/hr for the parking and storage area for the trailers for sulfolene designated as EPN F-M2A\_2; and
- Source cap for the North flare and South flare with an SO<sub>2</sub> limit of 430.00 lb/hr.

The IACX Rock Creek Gas Plant will implement RACM, including RACT, through implementation of final SO<sub>2</sub> emissions limits on the following sources at the site:

- Acid gas flare with an SO<sub>2</sub> limit of 140.00 lb/hr; and
- Acid gas incinerator with an SO<sub>2</sub> limit of 140.00 lb/hr.

The IACX Rock Creek Gas Plant is prohibited from operating the acid gas flare and acid gas incinerator simultaneously in the associated 30 TAC Chapter 112, Subchapter F rules.

The Orion Borger Carbon Black Plant will implement RACM, including RACT, through implementation of final SO<sub>2</sub> emissions limits on the following sources at the site:

- Tail gas may only be combusted in a source whose emissions are routed to the Waste Heat Boiler - CDS Stack or the Combined
- Waste heat boiler with circulating dry scrubber with an SO<sub>2</sub> limit of 144.11 lb/hr; and
- New combined flare to be constructed and operated with an SO<sub>2</sub> limit of 750.05 lb/hr.

If the new combined flare is not constructed by the 30 TAC Chapter 112, Subchapter F rules compliance date, flaring will be prohibited at the site until the new flare is constructed. The new combined flare is required to have a stack height of 65.00 meters and will replace the existing three flares at the site.

The P66 Borger Refinery will implement RACM, including RACT, through implementation of final SO<sub>2</sub> emissions limits on the following sources at the site:

- Sulfur recovery unit (SRU) 1 incinerator with an SO<sub>2</sub> limit of 44.82 lb/hr during routine operations.
- SRU 2 incinerator with an SO<sub>2</sub> limit of 37.00 lb/hr during routine operations.
- Source cap for the SRU 1 and SRU 2 incinerators, designated as EPN SRU\_MS\_CAP, during maintenance, startup, and shutdown (MSS) operations with an SO<sub>2</sub> limit of 94.00 lb/hr;
- Limitation on operation of the two SRU incinerators in the source cap EPN SRU\_MS\_CAP to only one SRU incinerator at a given time during SRU MSS operations.
- Source cap designated as EPN FLARE\_R\_CAP for each of the four flares covered by the associated Chapter 112 rule with an SO<sub>2</sub> limit of 100.14 lb/hr during routine operations.

- Source cap designated as EPN FLARE\_MS\_CAP for each of the four flares covered by the associated Chapter 112 rule with an SO<sub>2</sub> limit of 850.00 lb/hr during MSS operations.
- Source cap designated as EPN Flex\_R\_CAP comprising the sources listed in Table 4-9: *P66 Borger Refinery Point Sources* of Chapter 4 of this SIP revision with an SO<sub>2</sub> limit of 172.09 lb/hr during routine operations.
- Source cap designated as EPN Flex\_MS\_CAP comprising the sources listed in Table 4-9: *P66 Borger Refinery Point Sources* of Chapter 4 of this SIP revision with an SO<sub>2</sub> limit of 92.45 lb/hr during MSS operations;
- Two Fluidized Catalytic Cracking Units (FCCU) with the following limitations:
  - For the FCCU designated as EPN 29P1, SO<sub>2</sub> emissions may not exceed 97.37 lb/hr SO<sub>2</sub> on a seven-day rolling average
  - For the FCCU designated as EPN 40P1, emissions may not exceed 101.37 lb/hr SO<sub>2</sub> on a seven-day rolling average.

The P66 Borger Refinery will also be required to implement a limit on the sulfur content of any refinery gas stream combusted in any flare covered by the rule to a maximum of 162 parts per million by volume hydrogen sulfide determined on a three-hour rolling average, except for refinery gas streams generated during maintenance, startup, and shutdown, as provided for in 40 CFR §60.103a(h). During these periods the pounds per hour SO<sub>2</sub> emission limits apply. Finally, the Tokai Borger Carbon Black Plant will implement RACM, including RACT, through implementation of SO<sub>2</sub> emissions limits on the following sources at the site:

- Two Boilers, with a combined stack, designated as EPN 119, with an SO<sub>2</sub> limit of 109.10 lb/hr, when Boilers 1 or 2 are operating, singly or together;
- Plant 1 dryer stack, designated as EPN 121, with an SO<sub>2</sub> limit of 441.40 lb/hr;
- Plant 2 dryer stack, designated as EPN 122, with an SO<sub>2</sub> limit of 595.60 lb/hr;
- If a new flare is not constructed and operated, the following limitations:
  - An SO<sub>2</sub> limit of 420.00 lb/hr for the existing flare, referred to as the Plant 1, Unit 1 Primary Bag Filter Flare, designated as EPN Flare-1;
  - An SO<sub>2</sub> limit of 0.00 lb/hr for EPN 119;
  - An SO<sub>2</sub> limit of 250.00 lb/hr for EPN 121; and
  - An SO<sub>2</sub> limit of 400.00 lb/hr EPN 122;
- If a new flare is constructed and operated, the following limitations:
  - An SO<sub>2</sub> limit of 806.60 lb/hr for the new flare, to be referred to as the New Flare, to be designated as EPN New-Flare;
  - An SO<sub>2</sub> limit of 0.00 lb/hr for EPN 119;
  - An SO<sub>2</sub> limit of 272.50 lb/hr for EPN 121; and
  - An SO<sub>2</sub> limit of 436.00 lb/hr EPN 122.

The Tokai Borger Carbon Black Plant has not yet determined if it will rely on its existing flare or if it will construct and operate a new flare. The 30 TAC Chapter 112, Subchapter F rules under no circumstance allow the site to operate more than one flare that generates SO<sub>2</sub> emissions. In addition, tail gas may only be combusted in sources whose emissions are routed to Boiler 1 and 2 Common Stack (EPN 119), Plant 2 Dryer Stack (EPN 122), Flare 1 (EPN Flare-1) or the New Flare (EPN New Flare). The associated Chapter 112 rules address this operational scenario for the possibility of relying on the existing flare, (EPN Flare-1) or a newly constructed flare (EPN New Flare). The

associated Chapter 112 rules prohibit three flares (EPNs Flare-2, Flare-3, and Flare-4) from combusting sulfur or sulfur-containing compounds after the compliance date. If the new flare is constructed and operated, Flare-1 (EPN Flare-1) will be prohibited from combusting sulfur or sulfur-containing compounds. Sulfur or sulfur containing compounds will be prohibited from being routed to Plant 1 Number 1 and Number 2 Dryer Purge Stack (EPN 1) or Plant 1 Number 3 and 4 Dryer Purge Stack (EPN 3). If the new flare is constructed and operated, it would be required to have a stack height of 60.35 meters and operate only when both boilers are not operating. Otherwise, pursuant to the associated 30 TAC Chapter 112, Subchapter F rules, the existing flare, EPN Flare-1, would be allowed to operate only when neither of the boilers is operating.

In addition to the emissions limit on SO<sub>2</sub>, the associated 30 TAC Chapter 112, Subchapter F rules contain the other enforceable measures necessary for the affected area to attain and maintain the NAAQS, including monitoring requirements, testing requirements, and recordkeeping and reporting requirements.

#### 3.2.1.1 Alternate Means of Control (AMOC)

An option for owners or operators to request an AMOC is provided and based on the same procedural requirements in the SIP-approved 30 TAC Chapter 115 AMOC rules (30 TAC §§ 115.910 - 115.916). In approving these rules in 1997, the EPA stated that the AMOC provisions meet FCAA requirements by requiring “greater emission reductions for alternate control methods ... a public comment period and ... EPA approval/disapproval.”<sup>4</sup>

#### **3.2.2 Variability Analysis**

The 2014 SO<sub>2</sub> SIP guidance indicates that there may be cases in which an averaging time longer than one-hour may be appropriate provided that any emissions limits based on averaging periods longer than one hour are designed to have comparable stringency to a one-hour average limit at the critical emission value (CEV). The EPA indicated that if periods of hourly emissions above the critical emission value are a rare occurrence at a source, particularly if the magnitude of the emissions is not substantially higher than the critical emissions value, these periods are unlikely to have a significant impact on air quality. The EPA further indicated that it does not expect that the use of longer-term averages will be necessary in cases where sources’ emissions do not exhibit a high degree of variability. Therefore, the EPA recommends limiting the use of this approach to only those instances where a source’s normal emissions variability results in one-hour limits being extremely difficult to achieve in practice.

The 2014 SO<sub>2</sub> SIP guidance includes a recommended approach to determine an appropriate longer-term averaging limit than a block one-hour emission rate. This approach involves calculating an appropriate longer-term averaging limit as a percentage of the one-hour CEV limit applied to the source of SO<sub>2</sub> emissions. The first step of these calculations is to conduct air dispersion modeling to determine the CEV

---

<sup>4</sup> See Clean Air Act Limited Approval of Volatile Organic Compound (VOC) Control Measure for Texas, 62 Fed. Reg. 27964, 27965 (May 22, 1997).

defined as the one-hour SO<sub>2</sub> emissions limit shown through modeling to attain the 2010 SO<sub>2</sub> NAAQS.

The discount factor is a percentage applied to the CEV that results in an emissions limit for a longer averaging time that is expected to be comparably stringent as an emissions limit for a one-hour basis. This approach reconciles the inherent variability in hourly SO<sub>2</sub> emissions in the operations of some sources that may subsequently prove difficult to demonstrate compliance with an emissions limit on a one-hour basis. The EPA generally expects sources with longer averaging time limits to experience some occasions of hourly emissions to exceed the CEV while most hourly emissions will remain below the CEV. This approach to establishing an emissions limit for a longer averaging time is expected to result in an emissions limit that remains protective of the 2010 SO<sub>2</sub> NAAQS because it is unlikely that the limited occurrences of hourly SO<sub>2</sub> emissions above the CEV would coincide with times when the meteorology is conducive for high ambient concentrations of SO<sub>2</sub>.

Phillips 66 is the only owner or operator in the Hutchinson County nonattainment area that requested a limit on a longer averaging time. Phillips 66 provided technical data concerning hourly mass SO<sub>2</sub> emissions from the FCCU Emission Point No. (EPN) 29P1 and 40P1 at the P66 Borger Refinery. Five years of emissions data on a lb/hr basis covering the period from January 1, 2017 through December 31, 2021, for each FCCU EPN 29P1 and 40P1 operating hour were used for the emissions variability analysis to derive a final SO<sub>2</sub> emissions limit on a rolling seven-day average. The EPA's 2014 SO<sub>2</sub> SIP guidance allows states to consider limits on longer averaging times on a block basis and on a rolling basis; see Appendix C of the 2014 SO<sub>2</sub> SIP guidance. EPA's 2014 SO<sub>2</sub> SIP guidance, Appendices A, B, and C describe the process for determining emission rates for longer averaging times that are expected to be protective of the one-hour SO<sub>2</sub> NAAQS. Specifically, the 99th percentile of the one-hour lb/hr data was obtained as well as the 99th percentile of the rolling seven-day average lb/hr data. The ratio of the 99th percentile of the rolling seven-day average data to the 99th percentile of the one-hour data was then calculated to develop discount factors to be applied to the one-hour CEV limit and derive the final limits on a longer-averaging-time basis. The P66 Borger Refinery has employed a special FCCU anticoagulating catalyst for several years that is not expected to vary significantly in design and function, to minimize SO<sub>2</sub> emissions compared with the traditional FCCU catalysts. Therefore, the historical emissions of the FCCU are considered representative of future emissions.

Respective final discount factors for FCCU EPN 29P1 and 40P1 lb/hr emission limits representing the modeled one-hour CEV were determined to be 0.749 and 0.780. The TCEQ applied these discount factors to one-hour limits of 130.00 lb/hr and derived final FCCU EPN 29P1 and 40P1 limits of 97.37 lb/hr and 101.37 lb/hr on a rolling seven-day averaging basis, respectively. The discount factors are expected to provide a degree of comparable stringency for the corresponding limits on a one-hour basis. The emission rates calculated using the discount factors are expected to constrain FCCU EPN 29P1 and 40P1 emissions so that any occasions of emissions above the CEV will be limited in frequency and magnitude.

### **3.2.3 Enforceable Control Measures**

The control measures needed to meet the final SO<sub>2</sub> emissions limits and to further demonstrate attainment of the 2010 SO<sub>2</sub> NAAQS in the Hutchinson County

nonattainment area are made enforceable by the associated 30 TAC Chapter 112, Subchapter F rules. The associated Chapter 112 rules include the control measures for attainment, the associated implementation schedules, and the contingency measures to be triggered in the event of failure to attain the 2010 SO<sub>2</sub> NAAQS or failure to meet (RFP). The associated Chapter 112 rulemaking also makes enforceable the appropriate SO<sub>2</sub> emissions monitoring, testing, recordkeeping, and reporting requirements necessary to determine compliance with the final SO<sub>2</sub> emissions limits to ensure enforceability of the final SO<sub>2</sub> emissions limits in lb/hr for the five sites.

The TCEQ evaluated the compliance dates to ensure that compliance is achieved as soon as practicable; however, compliance dates depend on site-specific constraints. At the time the rule is finalized, there will be just over two years before the proposed January 1, 2025 compliance date. Tokai indicated that they will need to design, construct, and install natural gas duct burners and a new flare and are concerned that supply chain issues may impact the schedule. As a result, Tokai cannot commit to complying with the new 30 TAC Chapter 112 requirements before January 1, 2025. CP Chem also expressed concerns related to supply chain issues potentially impacting their ability to install necessary monitoring equipment and implement appropriate monitoring procedures before January 1, 2025. Phillips 66 indicated that it will need to make physical modifications to the refinery flare gas stream which will be scheduled during a turnaround. Turnarounds are scheduled by companies to align with contractor schedules, potential multiple maintenance projects that require coordination, and other relevant issues such as energy demands, weather, etc. The P66 Borger Refinery will also have to develop new procedures for complying with monitoring quality assurance requirements and emission limits not currently specified in a permit. Therefore, the refinery cannot commit to compliance before January 1, 2025. However, IACX committed to a compliance date of October 1, 2023, and Orion committed to a compliance date of June 30, 2023, except for those requirements that relate to the construction of a new flare. Given current uncertainties related to the global supply chain, compliance before January 2025 may not reasonably be achievable for other sources as well. The commission has no evidence that the concerns raised by the sources are invalid and agrees that the suggested compliance dates are reasonable, appropriate, and as expeditious as practicable.

### **3.2.4 Monitoring Network**

The TCEQ ambient air quality monitoring network provides monitoring data to characterize air quality based on the 2010 SO<sub>2</sub> NAAQS. SO<sub>2</sub> monitors are managed in accordance with 40 CFR Part 58 to provide data to determine compliance or progress towards compliance with the 2010 SO<sub>2</sub> NAAQS. The SO<sub>2</sub> monitor site evaluation and selection process considers the SO<sub>2</sub> source's peak modeled impacts along with other monitor siting criteria, including power availability, site access, and 40 CFR Part 58, Appendix E siting criteria requirements.

In areas not previously designated under the 2010 SO<sub>2</sub> NAAQS, the TCEQ deployed SO<sub>2</sub> monitors near sources meeting specifications referenced in the EPA's SO<sub>2</sub> Data Requirements Rule (DRR). To meet the relevant requirement of the DRR, the TCEQ deployed an SO<sub>2</sub> monitor at the Borger Farm to Market (FM) 1559 site (air quality system number 482331073) on November 16, 2016, in Hutchinson County. A portion of Hutchinson County was designated nonattainment effective April 30, 2021 (86 FR

16055). The designation was based on three years of monitoring data that resulted in a design value exceeding the NAAQS.

The TCEQ commits to maintaining an air monitoring network that meets regulatory requirements. The TCEQ continues to work with the EPA through the air monitoring network review process, as required by 40 CFR Part 58, to determine: the adequacy of the federal air monitoring network, additional monitoring needs, and recommended monitor decommissions. Air monitoring data from the Borger FM 1559 SO<sub>2</sub> monitor is quality assured, reported, and certified according to 40 CFR Part 58.

### **3.3 CONTINGENCY MEASURES**

#### **3.3.1 Introduction**

FCAA, §172(c)(9) defines contingency measures as such measures in a SIP that are to be implemented in the event that an area fails to make RFP, or fails to attain the NAAQS, by the applicable attainment date. FCAA, §172(c)(9), further requires contingency measures to become effective without further action. According to the EPA's 2014 SO<sub>2</sub> SIP guidance, contingency measures should consist of other available control measures that are not made enforceable as the control strategy as part of the SIP. In the 2014 SO<sub>2</sub> SIP guidance, the EPA acknowledged that SO<sub>2</sub> presents special considerations as a directly emitted pollutant. The EPA stated that control efficiencies are well understood for SO<sub>2</sub> control measures and are less uncertain than for other pollutants. Because the control strategy for an attainment demonstration SIP revision is based on the controls shown through dispersion modeling as necessary to demonstrate attainment of the 2010 SO<sub>2</sub> NAAQS in the nonattainment area, it is unlikely for the area to then fail to meet the NAAQS. As such, the EPA's 2014 SO<sub>2</sub> SIP guidance states that a comprehensive program to identify sources causing a violation of the 2010 SO<sub>2</sub> NAAQS and undertake aggressive follow-up action for compliance and enforcement pending the adoption of a revised SIP is a valid contingency measure.

Required contingency measures, described in section 3.4.2: *Contingency Plan*, would be triggered upon the effective date of the EPA's final notice of failure to attain for the Hutchinson County 2010 SO<sub>2</sub> NAAQS nonattainment area. Under FCAA, §172(c)(1), the EPA has six months following the attainment date to determine whether the area attained the standard. The EPA makes the determination of attainment based on available monitoring data, air dispersion modeling, and a demonstration that an enforceable control strategy incorporated in the SIP has been implemented. If the EPA determines that, based on the modeling, control strategy implementation, and monitoring data available, the affected nonattainment area failed to attain the 2010 SO<sub>2</sub> NAAQS, or failed to meet RFP, the contingency measures will be triggered.

#### **3.3.2 Contingency Plan**

The TCEQ's comprehensive program to identify sources of violations of the 2010 SO<sub>2</sub> NAAQS is satisfied through the monitoring network discussed in Section 3.3 of this chapter and follow-up for compliance and enforcement is satisfied through the TCEQ's enforcement programs authorized under the Texas Water Code (TWC) Chapter 7 and Texas Health and Safety Code (THSC) Chapter 382. See the Legal Authority (Section V-A) of this SIP revision for more information on the TCEQ's enforcement authority. Texas has the authority to issue orders pursuant to §382.024 and §382.025 of the Texas Clean Air Act (TCAA or the Act), THSC Chapter 382, and the FCAA, 42 United



States Code, §§7401 et seq., for the purpose of supporting attainment and maintenance of the 2010 SO<sub>2</sub> NAAQS. Texas has the authority to promulgate rules according to THSC, §382.017 and TWC, §5.103. State administrative procedures require that rules are adopted no more than six months after notice of the proposal is published in the *Texas Register* (see Texas Government Code, §2001.027).

The five sites in the Hutchinson County 2010 SO<sub>2</sub> NAAQS nonattainment area determined to have a significant impact on attainment of the 2010 SO<sub>2</sub> NAAQS are the Tokai Borger Carbon Black Plant, the Orion Borger Carbon Black Plant, the IACX Rock Creek Gas Plant, the CP Chem Borger Plant, and the P66 Borger Refinery. The control strategy, enforceable through associated Chapter 112 rules as discussed in Section 3.2.4: *Enforceable Control Measures* of this chapter, is protective of and provides for attainment of the 2010 SO<sub>2</sub> NAAQS. The TCEQ's comprehensive program to identify sources of violations of the 2010 SO<sub>2</sub> NAAQS is satisfied through the monitoring network discussed in Section 3.3: *Monitoring Network* of this SIP revision, and follow-up for compliance and enforcement is satisfied through the TCEQ's enforcement programs authorized under the TWC Chapter 7 and THSC Chapter 382. See the Legal Authority (Section V-A) of this SIP narrative for TCEQ's enforcement authority.

Upon the effective date of a determination by the EPA that the affected nonattainment area in Hutchinson County failed to attain the 2010 SO<sub>2</sub> NAAQS or failed to meet RFP, pursuant to FCAA §179(c), 42 United States Code (U.S.C.), §7509(c), the five sites subject to 30 TAC Chapter 112, Subchapter F will be notified, as appropriate, by the TCEQ that a full system audit (FSA) is required. Within 90 calendar days of the effective date of the EPA's determination of failure to attain the SO<sub>2</sub> NAAQS or failure to meet RFP, the notified sites, must submit the FSA, including recommended provisional SO<sub>2</sub> emission control strategies, to the TCEQ's Deputy Director of the Air Quality Division (AQD).

As part of the FSA, all five sites, respectively, will conduct a root cause analysis of the circumstances surrounding the cause of the determination of failure to attain. The root cause analysis will include:

- a review and consideration of, at a minimum, hourly mass emissions of SO<sub>2</sub> from the sources of SO<sub>2</sub> covered in the associated 30 TAC Chapter 112, Subchapter F rules;
- the meteorological conditions at the monitor, including the frequency distribution of wind direction temporally correlated with SO<sub>2</sub> readings greater than 75 parts per billion at the monitor for which the EPA's determination of failure to attain was made; and
- any exceptional event that may have occurred.

The five sites will also be required to conduct an FSA including a root cause analysis in the event of a failure to meet RFP. The rule clarifies that meteorological information is only required if the determination is based on information from ambient monitoring.

TCEQ AQD staff will analyze the FSA to verify and/or determine the cause of the failure to attain the 2010 SO<sub>2</sub> NAAQS. Any additional or adopted revised SO<sub>2</sub> control strategy required to achieve attainment will be submitted as a SIP revision to the EPA, including any necessary changes to the adopted Chapter 112 rules.

### **3.4 SIP EMISSIONS YEAR FOR EMISSION CREDIT AND DISCRETE EMISSION CREDIT GENERATION**

The Emissions Banking and Trading rules in 30 TAC §101.300 and §101.370 define SIP emissions for emission credit and discrete emission credit generation, respectively. There has been no previous attainment demonstration SIP revision applicable to Hutchinson County for the 2010 SO<sub>2</sub> NAAQS. Since this attainment demonstration SIP revision does not use a projection-base year inventory for SO<sub>2</sub> emissions, this SIP revision establishes 2017 as the SIP emissions year for all affected point sources in the nonattainment area, under §101.300(30)(E) and §101.370(31)(E).

### **3.5 ADDITIONAL FEDERAL CLEAN AIR ACT REQUIREMENTS**

#### **3.5.1 Conformity Requirements**

Section 176(c) of the FCAA establishes that no federal institution may support or approve an action in a NAAQS nonattainment or maintenance area that does not conform to the approved SIP. According to FCAA, §176(c)(1)(B)(i-iii), federal actions may not “cause or contribute to any new violation of any standard in any area; increase the frequency or severity of any existing violation of any standard in any area; or delay timely attainment of any standard or any required interim emission reductions or other milestones in any area.” Requirements for complying with FCAA, §176(c) and conforming to the SIP fall under two categories, general conformity requirements (40 CFR Part 93, Subpart B) and transportation conformity requirements (40 CFR Part 93, Subpart A).

##### 3.5.1.1 General Conformity

General conformity regulations apply in all NAAQS nonattainment and maintenance areas (ozone, carbon monoxide (CO), nitrogen dioxide (NO<sub>2</sub>), particulate matter (PM<sub>10</sub> and PM<sub>2.5</sub>), SO<sub>2</sub>, and lead) for all federal actions except those related to transportation plans, programs, and projects developed, funded, or approved under Title 23 United States Code or the Federal Transit Act, namely transportation-related actions by the Federal Highway Administration or the Federal Transit Administration. Federal actions in the Hutchinson County 2010 SO<sub>2</sub> NAAQS nonattainment area became subject to general conformity requirements April 30, 2022, one year after the effective date of designation as nonattainment. Federal actions with SO<sub>2</sub> emissions that are expected to meet or exceed 100 tons per year (tpy) will be required to demonstrate general conformity according to the criteria and procedures established in 40 CFR Part 93, Subpart B. In consultation with federal agencies that are required to approve general conformity determinations for federal actions in the Hutchinson County 2010 SO<sub>2</sub> NAAQS nonattainment area, the TCEQ will ensure that those actions conform to the SIP according to the criteria established in 40 CFR §93.158.

##### 3.5.1.2 Transportation Conformity

Federal transportation conformity regulations are only applicable for the transportation-related NAAQS: ozone, CO, NO<sub>2</sub>, PM<sub>10</sub> and PM<sub>2.5</sub>, and certain precursor pollutants in applicable NAAQS nonattainment and maintenance areas (40 CFR §93.102(b)(1)). SO<sub>2</sub> is not considered a transportation-related NAAQS, and the Hutchinson County 2010 SO<sub>2</sub> NAAQS nonattainment area is not subject to transportation conformity requirements.

Title 40 CFR §93.102(b)(2)(v) stipulates that transportation-related emissions of SO<sub>2</sub> in certain PM<sub>2.5</sub> nonattainment and maintenance areas may be considered significant enough to subject the areas to transportation conformity requirements for SO<sub>2</sub> as a precursor pollutant. The Hutchinson County 2010 SO<sub>2</sub> NAAQS nonattainment area has never been designated nonattainment for another NAAQS, including PM<sub>2.5</sub>, so only the SO<sub>2</sub> NAAQS is applicable. Based on the EPA's transportation conformity regulations, the Hutchinson County 2010 SO<sub>2</sub> NAAQS nonattainment area has no transportation conformity obligations; therefore, this SIP revision does not include a motor vehicle emissions budget, and 30 TAC §114.270 is not applicable.

### **3.5.2 Nonattainment New Source Review Certification Statement**

SO<sub>2</sub> nonattainment area SIP revisions must include provisions to require permits for the construction and operation of new or modified stationary sources. Major stationary sources in SO<sub>2</sub> nonattainment areas are those sources emitting at least 100 tpy of SO<sub>2</sub>. An NSR permitting program for nonattainment areas is required by FCAA, §172(c)(5) and §173, and further defined in 40 CFR 51, Subpart I (Review of New Sources and Modifications). Under these requirements, new major sources or major modifications at existing sources in an SO<sub>2</sub> nonattainment area must comply with the lowest achievable emissions rate and obtain sufficient emissions offsets. Nonattainment NSR permits for SO<sub>2</sub> authorize construction of new major sources or major modifications of existing sources of SO<sub>2</sub> in an area that is designated nonattainment for the SO<sub>2</sub> NAAQS. The NSR offset ratio for SO<sub>2</sub> nonattainment areas is 1.00:1.

In response to changes made by the Texas Air Control Board (a predecessor agency to the TCEQ) to address requirements of the FCAA Amendments of 1990 as well as other changes, the EPA published its approval of Texas' nonattainment NSR regulation for SO<sub>2</sub> on September 27, 1995, effective November 27, 1995 (60 FR 49781). The TCEQ has determined that because the Texas SIP already includes 30 TAC §116.12 (Nonattainment and Prevention of Significant Deterioration Review Definitions), most recently approved by the EPA as published on November 10, 2014 (79 FR 66626), and 30 TAC §116.151 (New Major Source or Major Modification in Nonattainment Area Other Than Ozone), most recently approved by the EPA as published on October 25, 2012 (77 FR 65119), the nonattainment NSR SIP requirements are met for Texas for the 2010 SO<sub>2</sub> NAAQS for areas including the Hutchinson County 2010 SO<sub>2</sub> NAAQS nonattainment area. Further, the TCEQ already certified that Texas has EPA-approved rules that cover nonattainment NSR requirements with the timely-submitted 2010 SO<sub>2</sub> NAAQS Infrastructure and Transport SIP Revision.

## CHAPTER 4: ATTAINMENT DEMONSTRATION MODELING

### 4.1 INTRODUCTION

This chapter describes the air quality dispersion modeling conducted in support of the Hutchinson County Attainment Demonstration State Implementation Plan (SIP) Revision for the 2010 Sulfur Dioxide (SO<sub>2</sub>) National Ambient Air Quality Standard (NAAQS). The United States Environmental Protection Agency's (EPA) *Guidance for 1-Hour SO<sub>2</sub> Nonattainment Area SIP Submissions* (EPA, 2014; SO<sub>2</sub> SIP guidance) requires air quality dispersion modeling to demonstrate attainment of the 2010 SO<sub>2</sub> NAAQS of 75 parts per billion (ppb) throughout the nonattainment area.

The modeling demonstration includes recommended and required elements for air quality dispersion modeling for SO<sub>2</sub> attainment demonstration SIP revisions as provided in 40 Code of Federal Regulations (CFR) Part 51 Appendix W (EPA, 2017) and the 2014 SO<sub>2</sub> SIP guidance.

This chapter summarizes the attainment demonstration modeling and presents results demonstrating that the control measures described in Chapter 3: *Control Strategies and Required Elements* will be effective in achieving attainment of the 2010 SO<sub>2</sub> NAAQS. A detailed description of the various modeling elements can be found in Appendix J: *Modeling Technical Support Document (TSD)*.

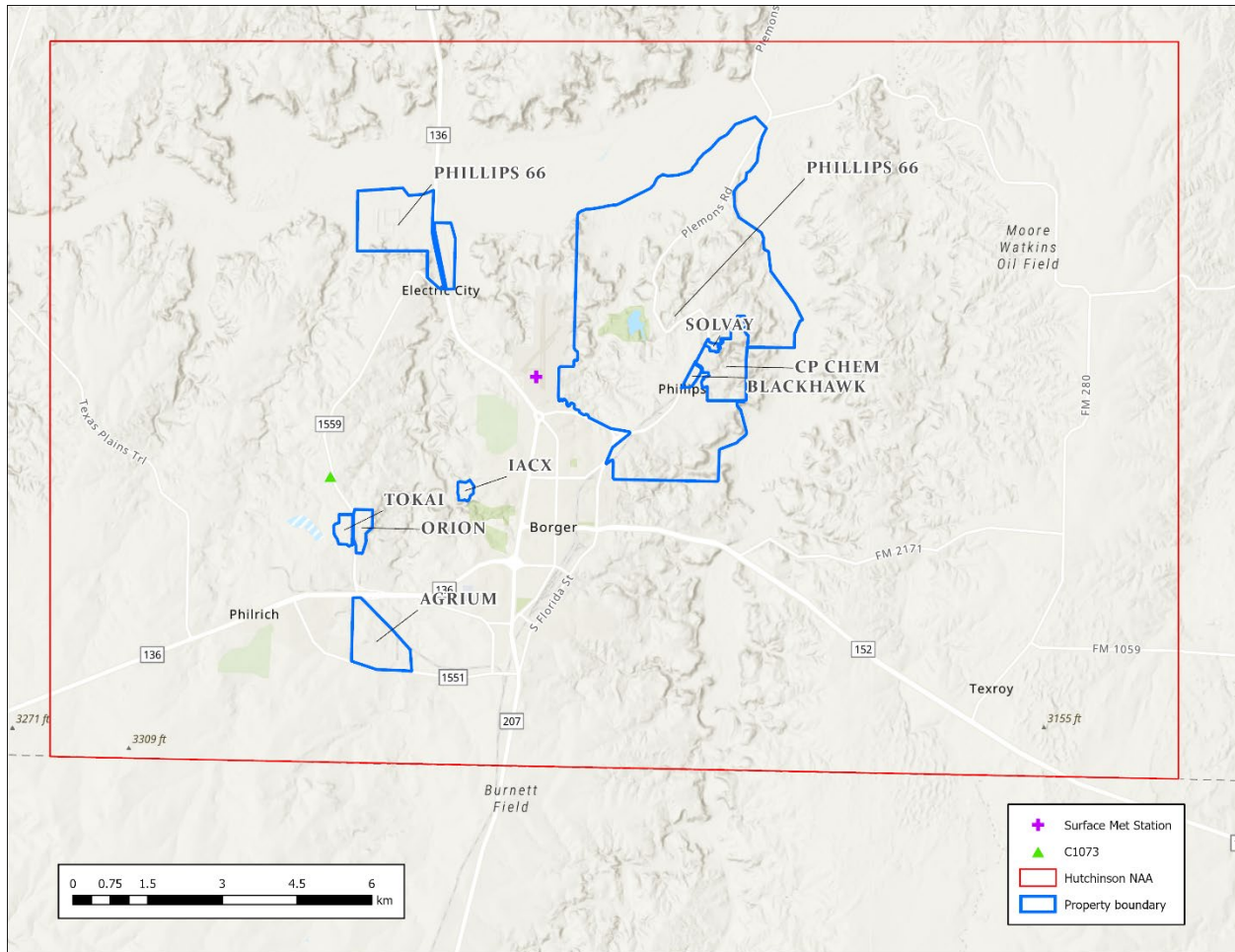
### 4.2 SOURCES OVERVIEW

There are eight sites housing multiple SO<sub>2</sub> emissions sources in the Hutchinson County 2010 SO<sub>2</sub> NAAQS nonattainment area that are included in the attainment demonstration modeling. They are as listed:

- Tokai's Borger Carbon Black Plant (Tokai Borger Carbon Black Plant) owned by Tokai Carbon CB LTD (Tokai);
- Orion's Borger Carbon Black Plant (Orion Borger Carbon Black Plant) owned by Orion Engineered Carbons LLC (Orion);
- Agrium US Borger Nitrogen Operations site (Agrium Borger Nitrogen Plant) owned by Agrium US INC (Agrium);
- IACX's Rock Creek Gas Plant (IACX Rock Creek Gas Plant) owned by IACX Rock Creek LLC (IACX);
- Borger Energy's Blackhawk Power Plant (Blackhawk Power Plant) owned by Borger Energy Associates LP (Borger Energy);
- Chevron Phillip Chemical Borger Plant (CP Chem Borger Plant) owned by Chevron Phillips Chemical Company LP (CP Chem);
- Solvay Specialty Polymers USA site (Solvay Specialty Polymers Plant) owned by Solvay Specialty Polymers USA LLC (Solvay); and
- Phillips 66's Borger Refinery (P66 Borger Refinery) owned by WRB Refining LP and operated by Phillips 66 Company (Phillips 66).

The emissions sources at all eight sites are included in the attainment demonstration modeling. Chapter 3: *Control Strategies and Required Elements* and preamble of the associated Chapter 112 rulemaking explains which of these sites and emissions sources are to be subject to new emissions limits or controls through this action.

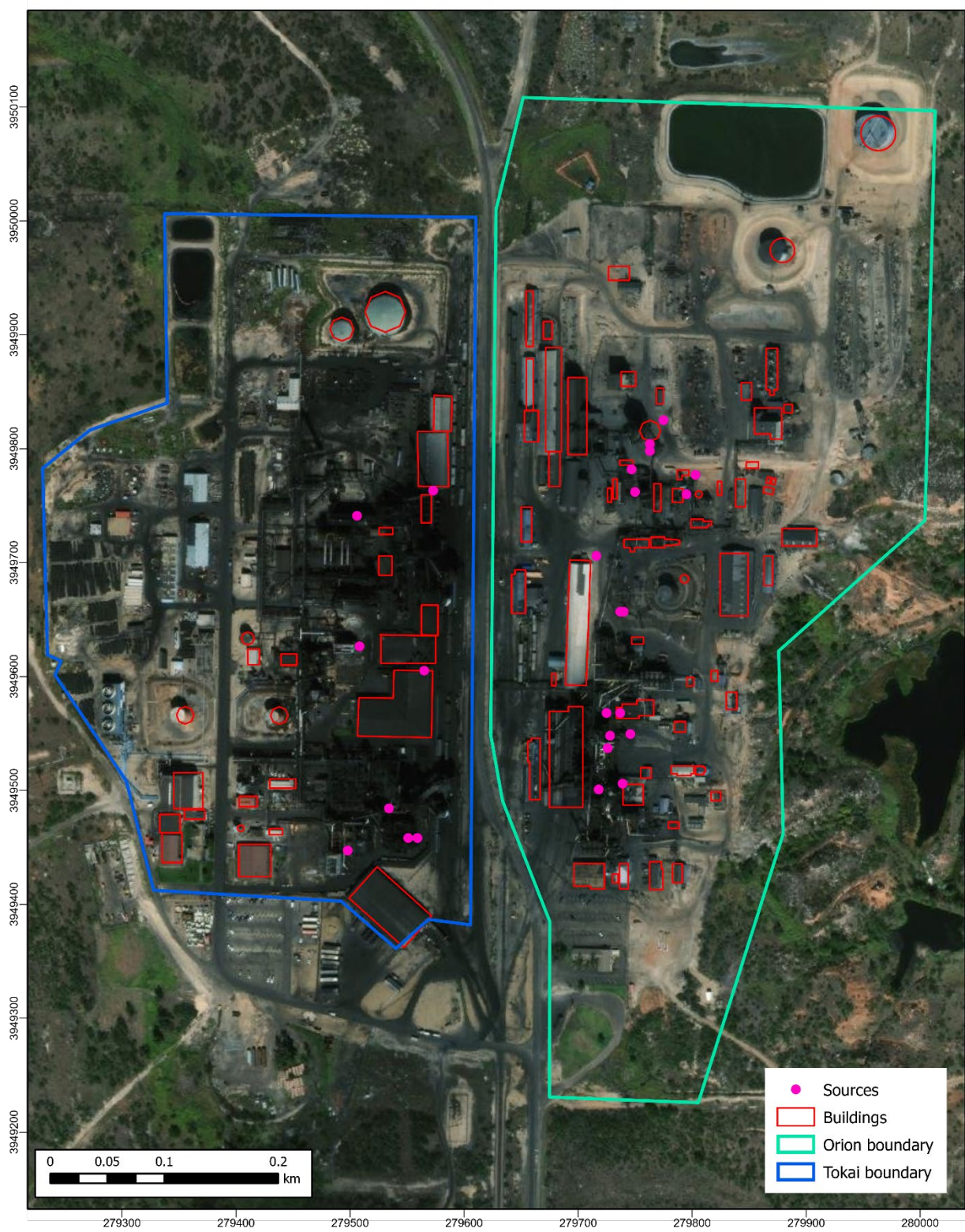
Figure 4-1: *Overview of the Hutchinson County 2010 SO<sub>2</sub> NAAQS Nonattainment Area* shows the location and boundaries of each site as a blue, solid line. Also shown is a Data Requirements Rule (DRR) monitor, the Borger Farm to Market (FM) 1559 monitor or Continuous Ambient Monitoring Station 1073 (C1073), represented by a green triangle, and the weather station used for surface meteorological data, Borger Hutchinson Airport, represented as a purple plus sign.



**Figure 4-1: Overview of the Hutchinson County 2010 SO<sub>2</sub> NAAQS Nonattainment Area**

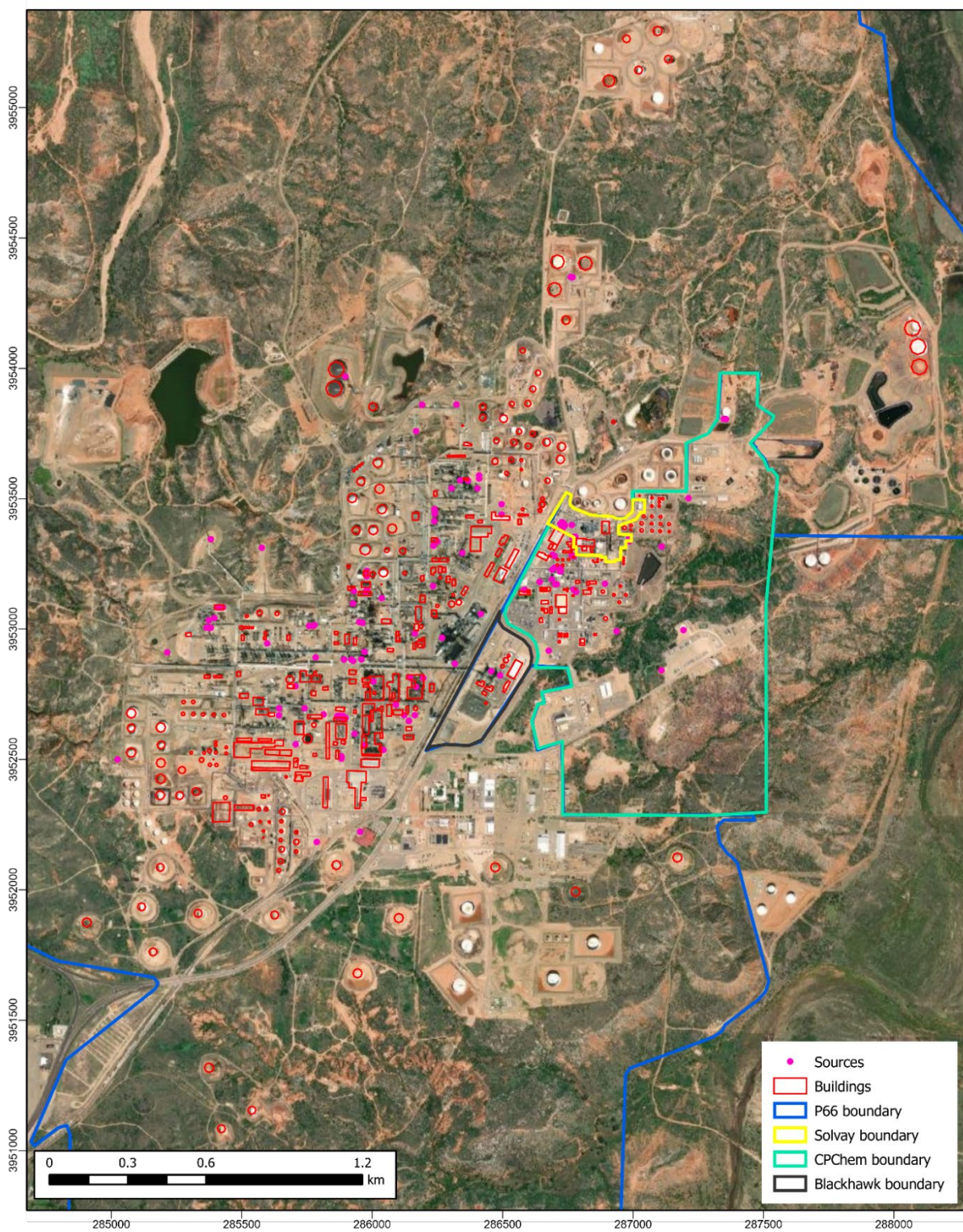
The location of emissions sources and buildings within each site’s modeled boundaries are presented in the next figures. Figure 4-2: *Orion Borger Carbon Black Plant and Tokai Borger Carbon Black Plant Overview* shows the Orion Borger Carbon Black Plant modeled site boundary outlined in teal, the Tokai Borger Carbon Black Plant modeled site boundary outlined in blue, their associated buildings outlined in red, and their stack locations marked with pink points. Figure 4-3: *CP Chem Borger Plant, P66 Borger Refinery, Solvay Specialty Polymers Plant, and Blackhawk Power Plant Overview* shows modeled site boundaries for CP Chem Borger Plant (teal), P66 Borger Refinery (blue), Solvay Specialty Polymers Plant (yellow), and Blackhawk Power Plant (light pink). Within their modeled site boundaries are their buildings outlined in red and source locations marked with pink points.





**Figure 4-2: Orion Berger Carbon Black Plant and Tokai Berger Carbon Black Plant Overview**





**Figure 4-3: CP Chem Berger Plant, P66 Berger Refinery, Solvay Specialty Polymer Plant, and Blackhawk Power Plant Overview**

Figure 4-4: *IACX Rock Creek Gas Plant Overview* displays the IACX Rock Creek Gas Plant modeled site boundary in a blue solid line, emissions sources as pink points and buildings in red. Figure 4-5: *Agrium Borger Nitrogen Plant Overview* displays the Agrium Borger Nitrogen Plant modeled site boundary in a blue solid line, buildings in red, and emissions sources as pink points.

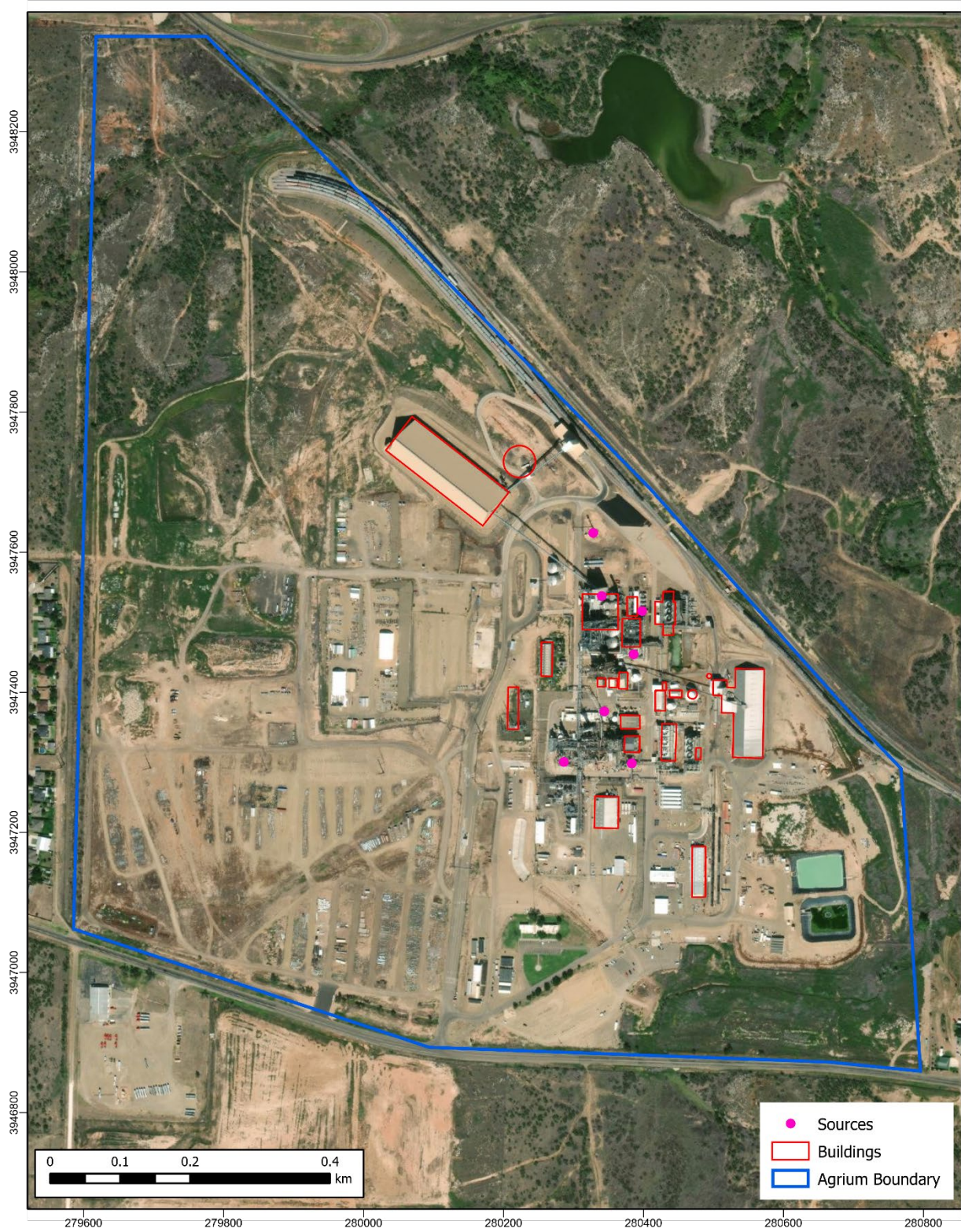
Modeled emissions sources are discussed in Section 4.4: *Source and Modeled Emissions Rates*. A detailed list of emissions sources and parameters in all eight properties in the Hutchinson County nonattainment area is included in Appendix J, Section 4: *Emissions Sources and Parameters*.





**Figure 4-4: IACX Rock Creek Gas Plant Overview**





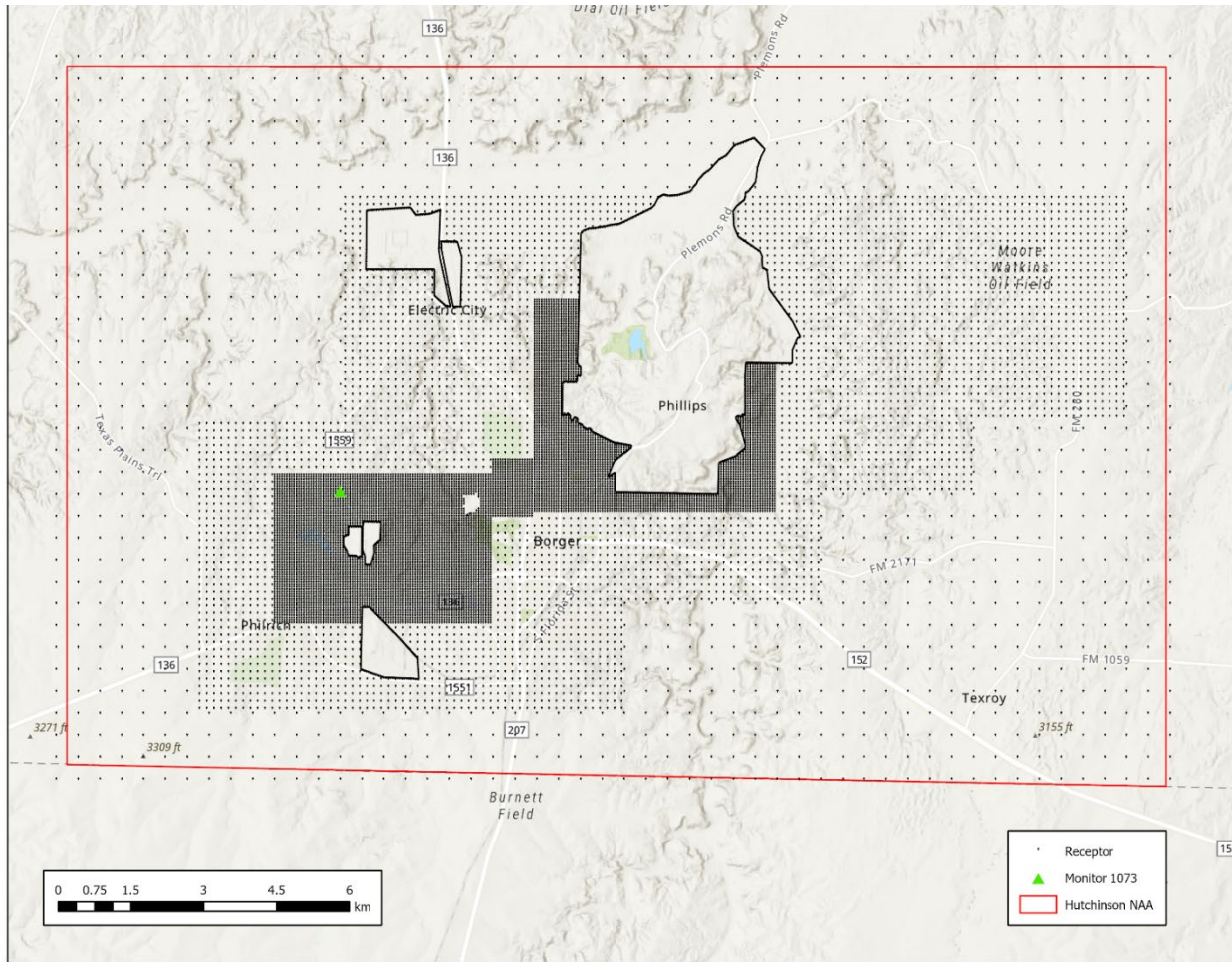
**Figure 4-5: Agrium Borger Nitrogen Plant Overview**

### 4.3 SUMMARY OF MODELING METHODS

As recommended in the 2014 SO<sub>2</sub> SIP guidance and 40 CFR Part 51 Appendix W, the American Meteorological Society (AMS)/EPA Regulatory Model (AERMOD) was used for this demonstration along with the associated suite of preprocessors. Software versions and settings used in the preprocessors are included in Appendix J, Section 10: *Reference Tables with Modeling Information*. Modeling details relating to the domain, receptor grid, meteorological inputs, background concentration, and site modeled boundaries were shared with the EPA's Region 6 office and finalized after frequent consultation.

Given emissions and meteorological inputs, AERMOD predicts pollutant concentrations at specific physical locations determined by the user, known as receptors. Per the 2014 SO<sub>2</sub> SIP guidance, modeling for SO<sub>2</sub> attainment demonstrations must evaluate SO<sub>2</sub> concentrations across all areas within the nonattainment area "that are considered ambient air (i.e., where the public generally has access)." Therefore, receptors have been placed throughout the ambient air portions of the Hutchinson County 2010 SO<sub>2</sub> NAAQS nonattainment area to ensure that the modeled scenarios demonstrate attainment of the NAAQS throughout the entire nonattainment area. Figure 4-6: *Modeling Domain and Receptor Grid* shows the nonattainment border as a red line and black points representing modeling receptors. To sufficiently capture SO<sub>2</sub> concentration gradients, the receptors decrease in resolution with increased distance away from emissions sources with spacing of 50 meters for the finest, innermost grid, 150 meters for the medium-resolution grid, and 450 meters for the outermost grid. Receptors with spacing of 50 meters are placed around Tokai Borger Carbon Black Plant, Orion Borger Carbon Black Plant, and IACX Rock Creek Gas Plant sites, including the C1073 monitor, and around the south region of the northeast Phillips 66 property cluster, which includes Blackhawk Power Plant, CP Chem Borger Plant, Solvay Specialty Polymers Plant. Additional receptors with 25 meters spacing were placed along site modeled boundaries. Receptors were removed from areas not considered ambient air which typically include property that is owned/operated by the sites and to which public access is controlled through the use of physical barriers and security measures. The portions of the nonattainment area that are considered nonambient were determined based on discussion with EPA and the companies. Receptor elevations were derived with AERMOD's terrain preprocessor, AERMAP, using one-third arc-second United States Geological Survey (USGS) National Elevation Data (NED).





**Figure 4-6: Modeling Domain and Receptor Grid**

Meteorological inputs for AERMOD were created using AERMET, AERMINUTE, and AERSURFACE. Five years of meteorological data from 2016 through 2020 were processed following the recommendations in 40 CFR Part 51 Appendix W §8.4, to capture meteorological variability. Surface data was taken from the National Weather Station at Borger Hutchinson Airport (WBAN 03024) and upper air data came from the Amarillo Airport (WBAN 23047). Sub-hourly one-minute wind data from the surface station was processed with AERMINUTE using a threshold windspeed of 0.5 meters per second. AERSURFACE was used to supply surface characteristics to AERMET. Details on AERMET, AERMINUTE, and AERFURFACE settings and data are provided in Appendix J, Section 6: *Meteorological Modeling*.

#### **4.4 SOURCES AND MODELED EMISSIONS RATES**

The modeling was conducted using the emissions rates for each source from the new source review permit for each site or lower enforceable emissions rates and other requirements as detailed in Chapter 3. A detailed list of each site’s emissions sources and modeled emissions rates that demonstrated attainment can be found in Table 4-1 through Table 4-10.

#### 4.4.1 Tokai Borger Carbon Black Plant

Table 4-1: *Tokai Borger Carbon Plant Black Point Sources* lists modeled Tokai Borger Carbon Black Plant emissions point sources<sup>5</sup> along with the maximum allowable emissions rates expressed in pound per hour (lb/hr). Three different scenarios were modeled: one representing routine operation and two for the planned maintenance, startup, and shutdown (MSS) operations. The first MSS scenario (MSS1) involves flaring from an existing flare, with Emission Point Number (EPN) FLARE-1. During MSS1 there are no emissions from EPN 119 and emissions from EPN 121 and EPN 122 are lower compared to the routine operation mode. The second MSS scenario (MSS2) involves flaring from a new, to-be-constructed flare that might replace emissions from all of the existing flares, EPN New-Flare. In addition, during MSS2 there are no emissions from EPN 119 and emissions from EPN 121 and EPN 122 have lower rates compared to the routine operation mode.

**Table 4-1: Tokai Borger Carbon Black Plant Point Sources**

EPN	Type	Description	Routine SO <sub>2</sub> Emission Rate (lb/hr)	MSS1 SO <sub>2</sub> Emission Rate (lb/hr)	MSS2 SO <sub>2</sub> Emission Rate (lb/hr)
119	Stack	Merged Boilers Stack	109.10	0.00	0.00
121	Stack	Plant 1 Dryer Stack	441.00	250.00	272.50
122	Stack	Plant 2 Dryer Stack	595.00	400.00	436.00
RVS	Stack	Cap for Small Reactor Vents	0.03	0.03	0.03
RVL	Stack	Cap for Small Reactor Vents	0.02	0.02	0.02
FLARE-1	Flare	Flare 1	0.00	420.00	0.00
New-Flare	Flare	New Flare	0.00	0.00	806.60

#### 4.4.2 Orion Borger Carbon Black Plant

Table 4-2: *Orion Borger Carbon Black Plant Point Sources* lists modeled Orion Borger Carbon Black Plant emissions sources along with the maximum allowable emissions rates. Two different scenarios were modeled, one representing routine operation and one with planned MSS operations. The MSS scenario involves flaring from a new flare that is to be constructed, EPN CFL. There will be no flaring from the existing flares with EPN E-10FL, EPN E-20FL, EPN E-40FL after the rule compliance date, and they are not

---

<sup>5</sup> In this chapter, “point source” refers to emissions sources with stacks and a specific location. This use of the term point source is consistent with the EPA’s 2014 SO<sub>2</sub> SIP guidance and Appendix W.

accounted for in the modeling. During MSS, the waste heat boiler, EPN E-6BN, does not operate and thus its emissions are set to zero in the modeling.

**Table 4-2: Orion Borger Carbon Black Plant Point Sources**

EPN	Type	Description	Routine SO <sub>2</sub> Emission Rate (lb/hr)	MSS SO <sub>2</sub> Emission Rate (lb/hr)
E-100H	Stack	Tank Preheater	<0.01	<0.01
E-5B	Stack	Thermal Boiler	0.01	0.01
E-6BN	Stack	Waste Heat Boiler	144.11	0.00
E-10D	Stack	B-1 Dryers Stack A and B	0.02	0.02
E-10DF	Stack	B-1 Dryers A and B Bag Filters	0.01	0.01
E-20D	Stack	B-2 Dryers Stack A and B	0.02	0.02
E-20DF	Stack	B-2 Dryers A and B Bag Filters	0.01	0.01
CFL	Flare	New Combined Flare	0.00	750.05
E-40D	Stack	B-4 Dryers Stack A and B	0.02	0.02
E-41DF	Stack	B-4 Dryers Bag Filters	0.01	0.01
E-50R	Stack	Thermal Unit 1 Reactor Stack A	0.69	0.69
E-51R	Stack	Thermal Unit 1 Reactor Stack B	0.69	0.69
E-53P	Stack	TPE Bag Filter	1.37	1.37
P-60P	Stack	FD Fan Vent Stack	0.21	0.21

#### 4.4.3 Agrium Borger Nitrogen Plant

Agrium Borger Nitrogen Plant emissions sources and the maximum allowable emissions rates that were used in the modeling are listed in Table 4-3: *Agrium Borger Nitrogen Plant Point Sources*. Agrium Borger Nitrogen Plant has several sources that do not operate continuously; however, to capture their impact, they are accounted for in the modeling on an hourly basis. Therefore, there is only one modeling scenario accounting for all sources.

**Table 4-3: Agrium Borger Nitrogen Plant Point Sources**

EPN	Type	Description	Routine SO <sub>2</sub> Emission Rate (lb/hr)
2	Stack	Reformer stack	9.95
E-1	Stack	Ammonia Emergency Generator	<0.01
E-2	Stack	Urea Emergency Generator	<0.01
H-5	Stack	Startup Heater Stack	0.26
PKGB	Stack	Boiler	0.28
FL-1	Flare	Ammonia Emergency Flare	0.01
FL-2	Flare	Urea emergency Flare	0.06

#### 4.4.4 IACX Rock Creek Gas Plant

Table 4-4: *IACX Rock Creek Gas Plant Point Sources* lists the modeled emissions sources along with the maximum allowable emissions rates for this site. There are two

modeled scenarios in which all sources have the same emissions except the incinerator (EPN INCIN1) and flare (EPN FLR1). In the first scenario, the incinerator, EPN INCIN1, is on and emits SO<sub>2</sub> while the flare is off. In the second scenario, the incinerator is off while the flare, EPN FLR1, is used and emits SO<sub>2</sub>.

**Table 4-4: IACX Rock Creek Gas Plant Point Sources**

EPN	Type	Description	Scenario1 SO <sub>2</sub> Emission Rate (lb/hr)	Scenario2 SO <sub>2</sub> Emission Rate (lb/hr)
STK4	Stack	Cooper GMV-10	0.03	0.03
STK5	Stack	Superior 8G825	0.02	0.02
STK6A	Stack	31,050 HP GE Gas Turbine Stack	0.19	0.19
STK6B	Stack	31,050 HP GE Gas Turbine Stack	0.19	0.19
STK6C	Stack	31,050 HP GE Gas Turbine Stack	0.19	0.19
STK6D	Stack	31,050 HP GE Gas Turbine Stack	0.19	0.19
STK7	Stack	Gas Turbine 7A	0.14	0.14
STK8A	Stack	Superior 6G825	0.02	0.02
HOH1	Stack	North Hot Oil Heater	0.01	0.01
HOH2	Stack	South Hot Oil Heater	0.01	0.01
HTRSTK3	Stack	Regen. Heater Stack 3	0.01	0.01
INCIN1	Stack	Acid Gas Incinerator	140.00	0.00
FLR1	Flare	Acid Gas Flare	0.00	140.00

#### 4.4.5 Blackhawk Power Plant

Table 4-5: *Blackhawk Power Plant Point Sources* lists modeled emissions sources along with the maximum allowable emissions rates. These emissions are modeled continuously on an hourly basis since the company represented that they will not exceed these emission rates under all planned routine operating conditions. The MSS activities at the site are limited to 2.44 tons per year and not to last more than 24 hours. The emissions limit is based on 6 occurrences of startup/shutdown with each occurrence not exceeding 24 hours. Based on the low emission rates, limited time frame and infrequent occurrences, MSS scenarios were not modeled for this site.

**Table 4-5: Blackhawk Power Plant Point Sources**

EPN	Type	Description	Emission Rate (lb/hr)
1-1	Stack	Unit 1, Combustion Turbine w. heat recovery steam generator (HRSG)	102.00
2-1	Stack	Unit 2, Combustion Turbine w. HRSG	102.00

#### 4.4.6 CP Chem Borger Plant

Table 4-6: *CP Chem Borger Plant Point Sources* lists modeled emissions point sources along with the maximum allowable emissions rates. Table 4-7: *CP Chem Borger Plant*

*Area Sources* lists emissions sources that were modeled as area sources<sup>6</sup> along with their emissions rates. Emissions from flares under different operating scenarios are listed in Table 4-6. Emissions from CP Chem Borger Plant are modeled continuously on an hourly basis, and three different scenarios were modeled.

**Table 4-6: CP Chem Borger Plant Point Sources**

EPN	Type	Description	Scenario 1 SO <sub>2</sub> Emission Rate (lb/hr)	Scenario 2 SO <sub>2</sub> Emission Rate (lb/hr)	Scenario 3 SO <sub>2</sub> Emission Rate (lb/hr)
FL-1	Flare	North Flare	411.90	0.00	430.00
FL-2	Flare	South Flare	75.18	430.00	0.00
ICE-NPY	Stack	North Paint Yard Air Compressor	0.01	0.01	0.01
ICE-SPY	Stack	North Paint Yard Air Compressor	0.01	0.01	0.01
M2B	Stack	SO <sub>2</sub> Unloading Hose	0.64	0.64	0.64
M2A1	Stack	Sulfolene Flaker Scrubber	0.05	0.05	0.05
M2A1_MSS	Stack	Sulfolene Flaker Scrubber	0.01	0.01	0.01
ICE-03	Stack	East Fire Water Engine	0.01	0.01	0.01
ICE-04	Stack	West Fire Water Engine	0.01	0.01	0.01
ICE-05	Stack	East Test Engine - RON	<0.01	<0.01	<0.01
ICE-06	Stack	West Test Engine - MON	<0.01	<0.01	<0.01

**Table 4-7: CP Chem Borger Plant Area Sources**

EPN	Description	SO <sub>2</sub> Emission Rate (lb/hr)
FM2A_1	Sulfolene handling area fugitive (Building + 1 trailer)	0.98
FM2A_2	Sulfolene handling area fugitive (4-trailer storage)	1.00
MPU_1	MPU Sulfolene Fugitives	<0.01
MPU_2	MPU Sulfolene Fugitives	<0.01
MPU_3	MPU Sulfolene Fugitives	<0.01
F_MPU	MPU Fugitives SO <sub>2</sub> Emissions	0.07

#### 4.4.7 Solvay Specialty Polymers Plant

Table 4-8: *Solvay Specialty Polymers Plant Point Sources* lists modeled emissions sources along with the maximum allowable emissions rates. One scenario of operation was modeled for Solvay since the company represented that they will not exceed these emission rates under both routine and MSS operating conditions.

**Table 4-8: Solvay Specialty Polymers Plant Point Sources**

<sup>6</sup> In this chapter, “area source” refers to emissions sources that are specified as emission within a defined area. This use of the term area source is consistent with the EPA’s 2014 SO<sub>2</sub> SIP guidance and Appendix W.



EPN	Type	Description	SO <sub>2</sub> Emission Rate (lb/hr)
H-10	Stack	No. 3 Dowtherm Furnace	1.24
H-8	Stack	No. 1 Dowtherm Furnace	0.87
H-9	Stack	No. 2 Dowtherm Furnace	0.87

#### 4.4.8 P66 Borger Refinery

Table 4-9: *P66 Borger Refinery Point Sources* lists modeled emissions sources along with the maximum allowable emissions rates, and Table 4-10: *P66 Borger Refinery Area Sources* lists sources that were modeled as area sources with their corresponding maximum allowable emissions rates. The P66 Borger Refinery has five emissions caps, listed in Table 4-12: *P66 Borger Refinery Emissions Caps*, which provides the cap name, number of sources in each cap, and the associated emissions rates. Sources that are under each cap are indicated with the cap name in Table 4-9. Two caps involve routine operations, and three caps apply to MSS operations. The distribution of emissions for sources that are under Flex\_R\_CAP and Flex\_MS\_cap is provided in Appendix J, Table 4-14: *P66 Borger Refinery Modeled Emissions Rates of Sources included in Flex\_R\_CAP*. Emissions for sources in other caps under different operational scenarios are presented in Appendix J, Section 8: *Modeling Scenarios*, Tables 8-5 through 8-8. P66 Borger Refinery caps resulted in 26 modeled scenarios.

Two Fluidized Catalytic Cracking Units (FCCU), EPN 29P1 and EPN 40P1, at the site also have tiered emissions rates, specified as “Tiered Rates” in Table 4-9, based on the exhaust flow level (operating load) during MSS operations. The tiered emissions rates for the FCCUs are presented in Table 4-11: *P66 Borger Refinery FCCU MSS Tiered Emissions Rates*.

**Table 4-9: P66 Borger Refinery Point Sources**

EPN	Type	Description	Routine SO <sub>2</sub> Emission Rate (lb/hr)	MSS SO <sub>2</sub> Emission Rate (lb/hr)
BLR12	Stack	P66 Boiler 12	14.48	14.48
12E1	Stack	Gas Engine #41	Flex_R_CAP	Flex_MS_CAP
12E2	Stack	Gas Engine #42	Flex_R_CAP	Flex_MS_CAP
12E3	Stack	Gas Engine #43	Flex_R_CAP	Flex_MS_CAP
12E4	Stack	Gas Engine #44	Flex_R_CAP	Flex_MS_CAP
12E5	Stack	Gas Engine #45	Flex_R_CAP	Flex_MS_CAP
12E6	Stack	Gas Engine #46	Flex_R_CAP	Flex_MS_CAP
12E7	Stack	Gas Engine #47	Flex_R_CAP	Flex_MS_CAP
7E1	Stack	Unit 7 Plat Engine #1	Flex_R_CAP	Flex_MS_CAP
7E2	Stack	Unit 7 Plat Engine #2	Flex_R_CAP	Flex_MS_CAP
7E3	Stack	Unit 7 Plat Engine #3	Flex_R_CAP	Flex_MS_CAP
7E4	Stack	Unit 7 Plat Engine #4	Flex_R_CAP	Flex_MS_CAP
7E5	Stack	Unit 7 Plat Engine #5	Flex_R_CAP	Flex_MS_CAP
7E6	Stack	Unit 7 Plat Engine #6	Flex_R_CAP	Flex_MS_CAP
10H1	Stack	P66 Crude Oil Heater	Flex_R_CAP	Flex_MS_CAP
19B1/19H1	Stack	Charge Furnace, #2 & #3	Flex_R_CAP	Flex_MS_CAP

EPN	Type	Description	Routine SO <sub>2</sub> Emission Rate (lb/hr)	MSS SO <sub>2</sub> Emission Rate (lb/hr)
19B1/19H2	Stack	P66 19.2 #2 Reheater	Flex_R_CAP	Flex_MS_CAP
19H3	Stack	P66 19.1 Charge Furnace	Flex_R_CAP	Flex_MS_CAP
19B2/19H4	Stack	P66 U19.3 Charge Furnace	Flex_R_CAP	Flex_MS_CAP
19H5	Stack	Unit 19.2, #1 Reboiler	Flex_R_CAP	Flex_MS_CAP
19H6	Stack	P66 U19.2 #1 Reheater	Flex_R_CAP	Flex_MS_CAP
2H1	Stack	P66 Unit 2-2 HDS Charge Heater	Flex_R_CAP	Flex_MS_CAP
2H2	Stack	P66 Deoiler Furnace	Flex_R_CAP	Flex_MS_CAP
22H1	Stack	P66 Alky Reboiler Furnace	Flex_R_CAP	Flex_MS_CAP
26H1	Stack	P66 Unit 26 Debutanizer Reboiler	Flex_R_CAP	Flex_MS_CAP
28H1	Stack	P66 Unit 28 Heater	Flex_R_CAP	Flex_MS_CAP
29H4	Stack	P66 Unit 29 Debutanizer Reboiler	Flex_R_CAP	Flex_MS_CAP
29P1	Stack	P66 Unit 29 FCCU	130.00	Tiered Rates
34I1	Stack	P66 Unit 34 Incinerator	Flex_R_CAP	SRU_MS_CAP
36H1	Stack	P66 HDS Unit Charge Heater	Flex_R_CAP	Flex_MS_CAP
40H1	Stack	P66 Unit 40 Superheater No. 1	Flex_R_CAP	Flex_MS_CAP
40H3	Stack	P66 Unit 40 Superheater	1.14	1.14
40P1	Stack	P66 Unit 40 FCCU	130.00	Tiered Rates
4H2	Stack	Unit 4 Dehydrator Heater	Flex_R_CAP	Flex_MS_CAP
42H1	Stack	P66 Unit 42 Reactor Charge Heater	Flex_R_CAP	Flex_MS_CAP
42H2	Stack	P66 Unit 42 Reactor Charge Heater	Flex_R_CAP	Flex_MS_CAP
43I1	Stack	P66 Unit 43 Incinerator	Flex_R_CAP	SRU_MS_CAP
50H1	Stack	P66 Unit 50 Charge Furnace	Flex_R_CAP	Flex_MS_CAP
50HT1	Stack	Coker Heater Tank 1	0.08	0.08
50HT2	Stack	Coker Heater Tank 2	0.08	0.08
50HT3	Stack	Coker Heater Tank 3	0.08	0.08
5H1	Stack	P66 Unit 5-A Feed Heater	Flex_R_CAP	Flex_MS_CAP
6H1	Stack	BHU Reduction Furnace	Flex_R_CAP	Flex_MS_CAP
7H1-4	Stack	P66 Unit 7 Charge Furnace	Flex_R_CAP	Flex_MS_CAP
85B2	Stack	P66 Unit 40 Boiler	18.68	18.68
9H1	Stack	P66 Crude Oil Heater	Flex_R_CAP	Flex_MS_CAP
93E1	Stack	Gas Engine #37	Flex_R_CAP	Flex_MS_CAP
93E2	Stack	Gas Engine #38	Flex_R_CAP	Flex_MS_CAP
98H1	Stack	P66 SMR Charge Heater	Flex_R_CAP	Flex_MS_CAP
SKIDBLR	Stack	P66 Skid Boiler	9.43	9.43
66FL1	Flare	East Flare	Flare_R_CAP	Flare_MS_CAP
66FL2	Flare	West Flare	Flare_R_CAP	Flare_MS_CAP
66FL3	Flare	Cat Flare	Flare_R_CAP	Flare_MS_CAP
66FL8	Flare	100M Sour Brine Flare Pit	0.01	0.01
66FL10	Flare	100M Swt Brine Flare Pit	<0.01	<0.01

EPN	Type	Description	Routine SO <sub>2</sub> Emission Rate (lb/hr)	MSS SO <sub>2</sub> Emission Rate (lb/hr)
66FL11	Flare	30M Swt Brine Flare Pit	0.01	0.01
66FL12	Flare	P66 GOHDS Flare	Flare_R_CAP	Flare_MS_CAP
66FL13	Flare	P66 Derrick Flare	13.60	13.60
51H1	Stack	Charge Heater - Vacuum Unit	Flex_R_CAP	Flex_MS_CAP
4H1	Stack	Butamer Furnace	Flex_R_CAP	Flex_MS_CAP
6H3	Stack	C6 Dryer Regen Furnace	Flex_R_CAP	Flex_MS_CAP
12H1	Stack	Regen. Gas Furnace	Flex_R_CAP	Flex_MS_CAP
81B17	Stack	Boiler 2.4	15.94	15.94
41H1	Stack	Reformer Furnace	Flex_R_CAP	Flex_MS_CAP
28-H3	Stack	Crude Charge Heater No. 1	6.94	6.94
28-H4	Stack	Crude Charge Heater No. 2	6.94	6.94
88-H1	Stack	CCR Charge and Interheaters	12.14	12.14
88-V1	Stack	CCR Vent	0.16	0.16
ENG-SD-6	Stack	Diesel Pump Engine	0.51	0.51
ENG-SD-7	Stack	Diesel Pump Engine	0.51	0.51
ENG-SD-8	Stack	Diesel Pump Engine	0.24	0.24
ENG-EB1	Stack	Auxiliary Air Engine1	0.10	0.10
ENG-EB2	Stack	Auxiliary Air Engine2	0.10	0.10
ENG-EB3	Stack	Auxiliary Air Engine3	0.10	0.10
ENG-EB4	Stack	Auxiliary Air Engine4	0.10	0.10
ENG-EB5	Stack	Auxiliary Air Engine5	0.10	0.10
ENG-EB6	Stack	Auxiliary Air Engine6	0.10	0.10
ENG-EB7	Stack	Auxiliary Air Engine7	0.10	0.10
ENG-EB8	Stack	Auxiliary Air Engine8	0.10	0.10
ENG-EB9	Stack	Auxiliary Air Engine9	0.10	0.10
FWP1A	Stack	67-H463 #8 ARDS Fire Water Pump	0.01	0.01
FWP2A	Stack	67-H464 #7 ARDS Fire Water Pump	0.01	0.01
FWP3A	Stack	67-H741 South NGL Fire Water Pump	<0.01	<0.01
FWP4A	Stack	67-V371 North Refinery Fire Water Pump	0.01	0.01
FWP5A	Stack	67-V372 South Refinery Fire Water Pump	0.01	0.01
NHT-3	Stack	North Holding Tank Portable Pump	0.58	0.58
53FL1	Stack	Thermal Oxidizer Unit	0.08	0.08
40H4	Stack	P66 Unit 40 Preheater Furnace	3.41	3.41
ENG-SC1	Stack	Unit 43 Backup Engine	0.16	0.16
EG-1	Stack	Emergency Generator	0.34	0.34
FWBP-1	Stack	Coker Firewater Engine	<0.01	<0.01
CPP1	Stack	North Sump Pump	0.21	0.21
CPP2	Stack	Lot 7 Pump	0.21	0.21

**Table 4-10: P66 Borger Refinery Area Sources**

EPN	Description	SO <sub>2</sub> Emission Rate (lb/hr)
F-43WHB	Train A Waste Heat Boiler Unit 43 Sulfur Recover Fugitives	0.01
MISC-MSS	Miscellaneous MSS Activities (Low Emitting Activities)	0.15
MSSFUG	Planned Maintenance Activities	0.01

**Table 4-11: P66 Borger Refinery FCCU MSS Tiered Emissions Rates**

EPN	Exhaust Flow Level	MSS SO <sub>2</sub> Emission Rate (lb/hr)
29P1	100%	130.00
29P1	75%	130.00
29P1	50%	130.00
40P1	100%	130.00
40P1	75%	130.00
40P1	50%	130.00

**Table 4-12: P66 Borger Refinery Emissions Caps**

CAP name	Number of Sources	Routine SO <sub>2</sub> Emission Rate (lb/hr)	MSS SO <sub>2</sub> Emission Rate (lb/hr)
Flex_R_CAP	46	172.09	N/A
Flex_MS_CAP	44	N/A	92.45
Flare_R_CAP	4	100.14	N/A
Flare_MS_CAP	4	N/A	850.00
SRU_MS_CAP	2	N/A	94.00

For a source in the Flex\_R\_CAP and Flex\_MS\_CAP, the hourly emission rate modeled is the maximum hourly individual contribution from that source to the sum total of the emissions specified as the emissions cap value and based on what is represented in the associated NSR permit application and provided by the company. Two incinerators, EPN 34I1 and EPN 43I1, are included in the Flex\_R\_CAP and also have individual maximum hourly enforceable limits of 44.82 lb/hr and 37.0 lb/hr, respectively.

The Flare\_R\_CAP was conservatively modeled with emissions of each flare set to the maximum allowable cap emission level for every hour and day during the five-year period.

Flare\_MS\_CAP is an emissions cap allowing flexible operation across four flares, EPN 66FL1, EPN 66FL2, EPN 66FL3, and EPN 66FL12. The TCEQ modeled 13 scenarios, with different distribution of the emissions cap among the four flares based on past historical data provided by the company. Details of the scenarios are provided in Appendix J, Section 8: *Modeling Scenarios*.

The SRU\_MS\_CAP includes two sources, EPN 34I1 and EPN 43I1, and a limitation that only one of the incinerators can be operational at any time. Therefore, the TCEQ

modeled two scenarios. Each modeling scenario has the maximum allowable cap emission rate released through one of the incinerators with the other incinerator not operating.

Other sources in P66 Borger Refinery that are not under any caps were modeled with normal and/or MSS emissions rates, as applicable. Overall, 26 modeling scenarios were identified to account for different emissions distributions in caps.

#### **4.4.9 Other Sources**

The impact of other sources of SO<sub>2</sub> affecting the Hutchinson County 2010 SO<sub>2</sub> NAAQS nonattainment area that are not explicitly modeled, such as emissions from mobile sources or area sources outside of a specific site were represented in the model as a background concentration. An hourly and seasonally varying background concentration was calculated based on data from the Midlothian Old Fort Worth monitor (C52) in Ellis County, Texas. Details on the choice of monitor and the calculation of background concentrations can be found in Appendix J, Section 7: *Background Concentration*.

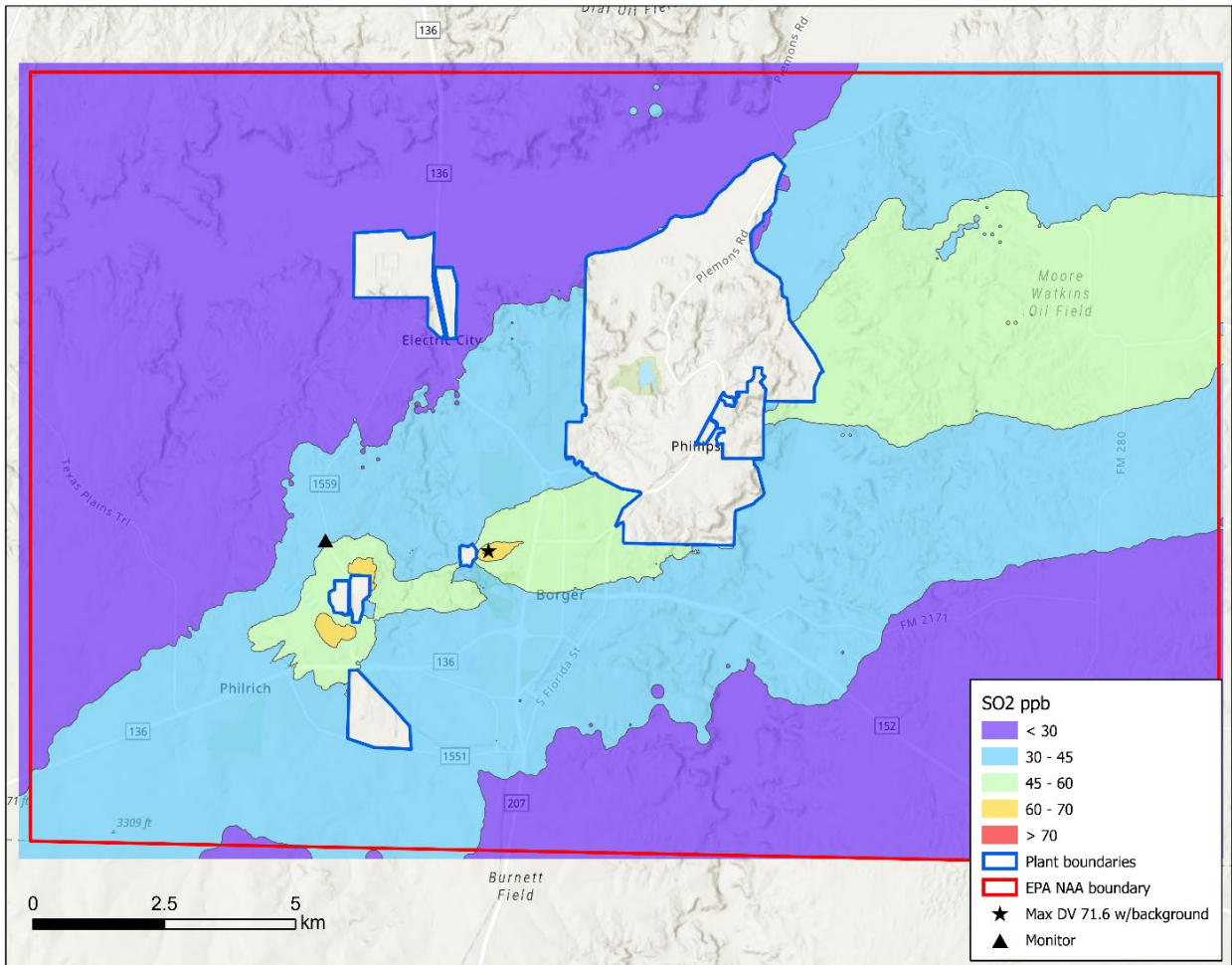
#### **4.5 MODELING SCENARIOS AND RESULTS**

The TCEQ identified and completed many modeling scenarios to evaluate the impact of emissions, during full and reduced loads, on air quality in the Hutchinson County 2010 SO<sub>2</sub> NAAQS nonattainment area. All modeling scenarios were run using the same meteorological inputs, domain, downwash, and background concentrations. A list of all modeling scenarios, along with the resulting modeled design value (DV), is presented in Appendix J, Section 8: *Modeling Scenarios*.

There were three sets of modeling runs: (1) modeling scenarios with emissions at 100% load; (2) modeling scenarios with emissions and stack parameters at lower operating loads; and (3) a third “site ambient run.” A site ambient run provides information on the cumulative impact of sources in the nonattainment area, other than the sources within that site, on the air quality within a site. For site ambient runs, receptors are added within site modeled boundaries. Details of the site ambient runs and the results of runs are provided in Appendix J, Section 8: *Modeling Scenarios*.

All modeled scenarios have a maximum design value less than 75 ppb, which demonstrates that the control measures are protective of the 2010 one-hour SO<sub>2</sub> NAAQS.

The scenario with the highest maximum DV for routine operations, or the controlling routine scenario, was scenario number 1, with a maximum DV of 71.6 ppb. The results of this scenario are plotted in Figure 4-7: *Modeling Results of Controlling Routine Scenario*.



**Figure 4-7: Modeling Results of Controlling Routine Scenario**

There were two scenarios with the same highest maximum DV for MSS operations, or the controlling MSS scenarios: scenario number 16, with a maximum DV of 74.4 ppb; and scenario number 94, with a maximum DV of 74.4 ppb. The results of scenario 16 are plotted in Figure 4-8: *Modeling Results of Controlling MSS Scenario Number 16*, and results of scenario 94 are plotted in Figure 4-9: *Modeling Results of Controlling MSS Scenario Number 94*.

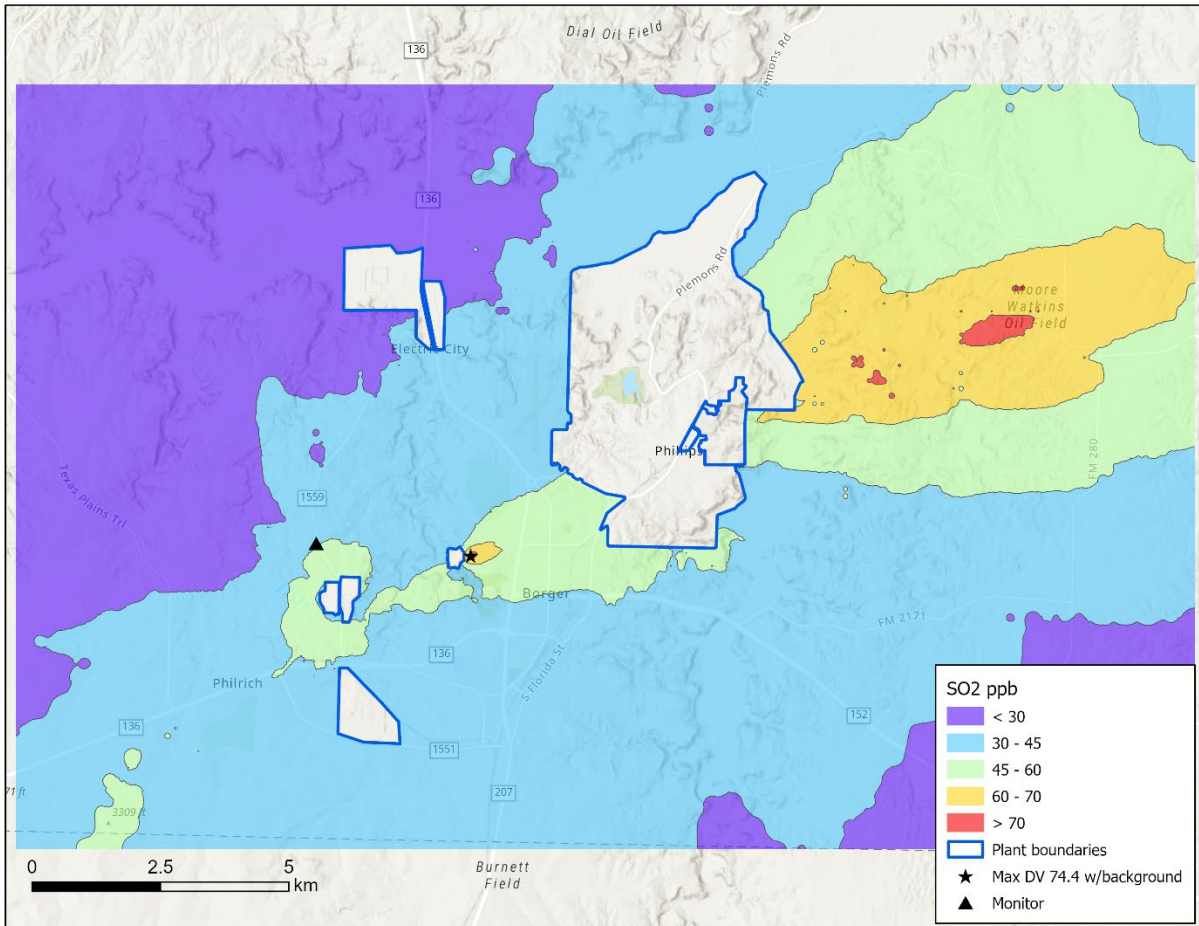
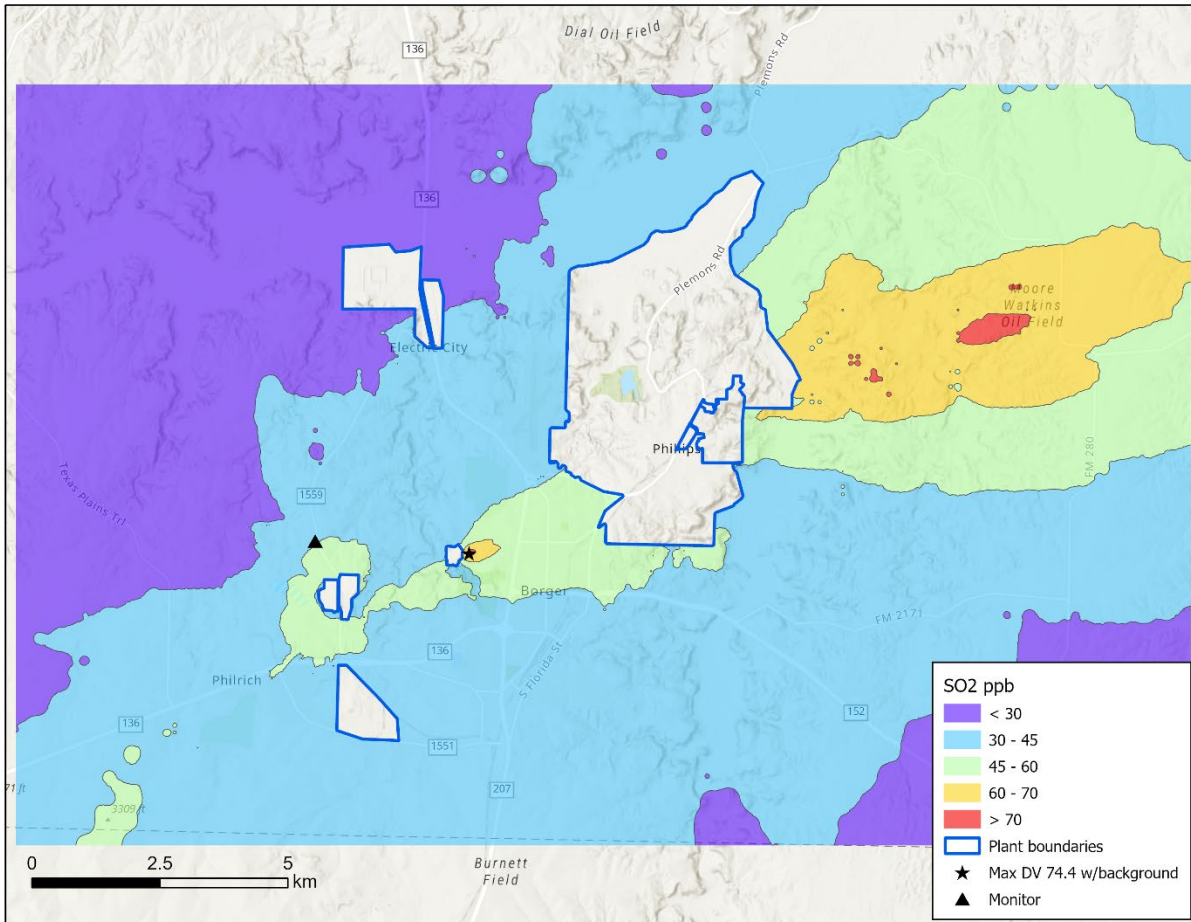


Figure 4-8: Modeling Results of Controlling MSS Scenario Number 16





**Figure 4-9: Modeling Results of Controlling MSS Scenario Number 94**

#### 4.6 CONCLUSION

The TCEQ conducted air quality dispersion modeling following EPA guidance for the Hutchinson County Attainment Demonstration SIP Revision for the 2010 One-Hour SO<sub>2</sub> NAAQS. The TCEQ modeled the control measures for emissions sources described in Chapter 3. The TCEQ considered possible operating scenarios and modeled attainment in each case, thereby ensuring that the flexibility in operating conditions allowed to the sources under the controls will remain protective of the NAAQS. Based on the TCEQ’s modeling, it is expected that the Hutchinson County 2010 SO<sub>2</sub> NAAQS nonattainment area will be in attainment by the attainment date.

#### 4.7 REFERENCES

EPA, 2014. [Guidance for 1-Hour SO<sub>2</sub> Nonattainment Area SIP Submissions](https://www.epa.gov/sites/production/files/2016-06/documents/20140423guidance_nonattainment_sip.pdf), accessed at [https://www.epa.gov/sites/production/files/2016-06/documents/20140423guidance\\_nonattainment\\_sip.pdf](https://www.epa.gov/sites/production/files/2016-06/documents/20140423guidance_nonattainment_sip.pdf), April 23.

EPA, 2017. [40 Code of Federal Regulations \(CFR\) Part 51 Appendix W: Revisions to the Guideline on Air Quality Models: Enhancements to the AERMOD Dispersion Modeling System and Incorporation of Approaches to Address Ozone and Fine Particulate Matter. 82 Federal Register 5182](#), accessed at



[https://www.epa.gov/sites/production/files/2020-09/documents/appw\\_17.pdf](https://www.epa.gov/sites/production/files/2020-09/documents/appw_17.pdf),  
January 17.

EPA, 2019. ["Revised Policy on Exclusions from "Ambient Air". Andrew R. Wheeler. \(December 2, 2019\). https://www.epa.gov/sites/production/files/2019-12/documents/ambient\\_air2019.pdf.](https://www.epa.gov/sites/production/files/2019-12/documents/ambient_air2019.pdf)

## CHAPTER 5: REASONABLE FURTHER PROGRESS

### 5.1 INTRODUCTION

Federal Clean Air Act (FCAA), §171(c) defines the reasonable further progress (RFP) state implementation plan (SIP) requirement as “such annual incremental reductions in emissions of the relevant air pollutant as are required by this part or may reasonably be required by the Administrator for the purpose of ensuring attainment of the applicable national ambient air quality standard by the applicable date.” The United States Environmental Protection Agency’s (EPA) *Guidance for 1-Hour SO<sub>2</sub> Nonattainment Area SIP Submissions* (2014 SO<sub>2</sub> SIP guidance) indicates that this definition is most appropriate for pollutants emitted by numerous and diverse sources where inventory-wide reductions are necessary to attain a standard, but that this definition of RFP is “generally less pertinent to pollutants like sulfur dioxide (SO<sub>2</sub>) that usually have a limited number of sources affecting areas which are relatively well defined, and emissions controls for such sources result in swift and dramatic improvement in air quality.” Therefore, the 2014 SO<sub>2</sub> SIP guidance indicates that for SO<sub>2</sub> nonattainment areas, RFP is best construed as “adherence to an ambitious compliance schedule.”

### 5.2 RFP DEMONSTRATION

On March 26, 2021, the EPA designated a portion of Hutchinson County as nonattainment for the 2010 SO<sub>2</sub> National Ambient Air Quality Standard (NAAQS), effective April 30, 2021 (86 FR 16055). Consistent with the EPA’s 2014 SO<sub>2</sub> SIP guidance document, the Hutchinson County 2010 SO<sub>2</sub> NAAQS nonattainment area includes eight sites housing multiple SO<sub>2</sub> emissions sources from five of the eight sites, as explained in Chapter 3 of this SIP revision, with well-defined emissions, such that emissions controls for specific sources should result in “swift and dramatic improvement in air quality.” As detailed in Chapter 3: *Control Strategy and Required Elements* of this SIP revision, enforceable emission limitations will be implemented for the emissions sources at each of the five sites in this area according to the schedule outlined in Section 5.3: Compliance Schedule. This compliance schedule fulfills the RFP requirement for the Hutchinson County 2010 SO<sub>2</sub> NAAQS nonattainment area.

### 5.3 COMPLIANCE SCHEDULE

The EPA’s 2014 SO<sub>2</sub> SIP guidance indicates that RFP for the 2010 one-hour SO<sub>2</sub> NAAQS requires only such reductions in emissions as are necessary to attain the NAAQS. Given the relationship between SO<sub>2</sub> emissions and air quality and the immediate effect of air quality improvements, RFP is best construed as “adherence to an ambitious compliance schedule” (74 FR 13547, April 16, 1992). The EPA maintains its interpretation that the source(s) of SO<sub>2</sub> emissions implement appropriate control measures as expeditiously as practicable to ensure attainment of the standard by the applicable attainment date.

IACX Rock Creek LLC (IACX) committed to a compliance date of October 1, 2023, and Orion Engineered Carbons LLC (Orion) committed to a compliance date of June 30, 2023, except for those requirements that relate to the construction of a new flare. The compliance deadline for all other requirements for Chevron Phillips Chemical Company LP, Phillips 66 Company, and Tokai Carbon CB LTD, in the associated 30 Texas Administrative Code Chapter 112, Subchapter F (Rule Project No. 2021-035-112-

AI) rules is January 1, 2025. The attainment date for the Hutchinson County 2010 SO<sub>2</sub> nonattainment area is April 30, 2026.

*Appendices Available Upon Request*

Mary Ann Cook  
[maryann.cook@tceq.texas.gov](mailto:maryann.cook@tceq.texas.gov)  
512-239-6739

**RESPONSES TO COMMENTS RECEIVED CONCERNING THE  
HUTCHINSON COUNTY ATTAINMENT DEMONSTRATION  
STATE IMPLEMENTATION PLAN (SIP) FOR THE 2010  
SULFUR DIOXIDE (SO<sub>2</sub>) NATIONAL AMBIENT AIR  
QUALITY STANDARD (NAAQS)**

The Texas Commission on Environmental Quality (TCEQ or commission) held a public hearing for the proposed SIP revision and associated proposed rulemaking on May 19, 2022 at 6:00 p.m. at the City Hall in Borger. During the comment period, which closed on June 2, 2022, the TCEQ received comments on the SIP from the United States Environmental Protection Agency (EPA).

Changes made to the proposal of this SIP revision that were based on comments received on the associated Chapter 112 rulemaking (Rule Project No. 2021-035-112-AI) are discussed in the Response to Comments section of the rule preamble and not in this document.

**TABLE OF CONTENTS**

General Comments  
Technical Comments

**GENERAL COMMENTS**

The EPA stated that contingency measures are to become effective without further action by the state or the EPA, where the area has failed to achieve reasonable further progress (RFP) or failed to attain the NAAQS by the statutory attainment deadline. The EPA further stated that the attainment demonstration and the rules for each nonattainment area should clarify that the contingency measures in the SIP are triggered not only in the event that the area fails to attain the NAAQS, but also in the event that the area fails to make RFP. The EPA also recommended adding further discussion in Section 3.4.2: *Contingency Plan* on the contingency measures triggering in the event of the failure to make RFP is also recommended.

**The commission updated Section 3.4 of this SIP narrative to clarify that contingency measures are triggered in the event that the area fails to meet RFP, the corresponding changes were made to the associated Chapter 112 rules, and those changes are discussed in the Response to Comments section of the rule preamble.**

The EPA commented that some one-hour SO<sub>2</sub> nonattainment areas have adopted contingency measures that require investigation by the sources whenever an exceedance, a monitored ambient air concentration above the NAAQS, or a violation of a permit limit occurs, even prior to the attainment deadline date. The EPA stated that the requirement is to reach attainment as expeditiously as practicable and this proactive contingency measure can help an area reach attainment. The EPA indicated that this approach could be beneficial for the Howard, Hutchinson, and Navarro attainment demonstrations.

**All sites addressed in the Chapter 112 rules are subject to the Title V Operating Permits Program which provides additional compliance tools that, in conjunction with other aspects of the compliance and enforcement program, will help ensure attainment is reached as expeditiously as practicable. The TCEQ's robust enforcement program, exceedance reports in the associated rules, Title V deviation reports, and Title V compliance certifications will be used to investigate and address exceedances and violations of permit limits. Because the TCEQ already has the authority and tools needed to fully investigate exceedances and permit violations, no changes were made in response to this comment.**

The EPA commented that an important feature of attainment plans is the date by which sources must comply with limits sufficient to provide for attainment and the EPA expects the approvable compliance dates for control measures in the attainment demonstration to be as expeditious as practicable. The EPA stated that the required compliance date should be specified based on consideration of the necessary measures needed to be implemented to comply with the emission limits and other requirements. The EPA also indicated that the identification of an enforceable compliance date should be supported by a justification of appropriateness, of the time frame necessary for the source to comply with the specific requirements and where no additional controls are needed to comply, a shorter compliance schedule may be appropriate. The EPA also noted that, to satisfy RFP requirements, sources should comply as expeditiously as practicable in order to ensure attainment of the standard by the applicable attainment date. The EPA requested that more explanation and rationale be provided for how the selected compliance dates for affected sources in Howard, Hutchinson, and Navarro counties satisfy this requirement.

**In response to this comment, the commission reevaluated the compliance dates to ensure that compliance is achieved as soon as practicable, depending on site-specific constraints as well as other considerations such as global supply chain delays. The basis for the compliance dates for each site is discussed in Section 3.2.3 of the attainment demonstration SIP revision and the Response to Comments section of the preamble for the associated Chapter 112 rulemaking.**

The EPA commented that the Chapter 112 rulemaking allows greater than one-hour periods of measuring, sampling, or testing the sulfur content of inlet streams, tail gas, feed, products, etc.; and that the EPA prefers hourly data collection and calculation as that will match with the one-hour NAAQS. The EPA indicated that the attainment demonstration SIP revision, where applicable, should provide justification and additional supporting data from past measurements, sampling, or testing that this periodic measuring/sampling/testing of greater than one-hour periods does not vary considerably from one-hour measurements, sampling, or testing and provides for accurate calculations of actual emissions. The EPA stated that the SIP revision should demonstrate that these measurements/sampling/testing provide for enough stringency for attainment (the corresponding one-hour emission limit for the applicable unit is stringent enough that slight variations in sulfur content measured in a greater than one-hour period do not impact attainment). The EPA also requested TCEQ provide an evaluation of the use of a continuous emissions monitoring system (CEMS) to directly monitor SO<sub>2</sub> emissions to demonstrate compliance. The EPA stated that for sources on which CEMS are not easily installed, post-combustion, continuous

total sulfur content and continuous flow monitoring should be evaluated and required unless technically infeasible or cost prohibitive to monitor emissions accurately.

**The only sources in Subchapter F, for which continuous information regarding sulfur concentration is not collected are at the Tokai Borger Carbon Black Plant and, when the boilers are down, at the Orion Carbon Black. In these cases, emissions are determined by a mass balance approach using sampling of the carbon black oil and the carbon black product. The cost of installing continuous sulfur analyzers for each EPN at a single site is estimated by Tokai to be over half a million dollars. In addition, continuous analyzers on these types of streams may be difficult to maintain and require frequent repair or replacement. Concerns were also raised by Tokai over whether the continuous analyzer would result in more accurate emission estimates. The TCEQ evaluated daily samples of carbon black oil used over a one-year period which demonstrated a low overall variability of approximately 3%. Daily sampling over one year of each grade of carbon black product produced showed a much lower variation in sulfur content than in the carbon black oil. For each of the 11 grades of carbon black product produced over a year the variation was less than 1%. Consequently, the TCEQ has determined that daily sampling of each grade of carbon black product is adequate to accurately represent the sulfur content of the product in the mass balance equation. Variability in sulfur content in the carbon black oil from different sources will be minimized by sampling from a mix tank that includes all sources of carbon black oil and the impact of variability over the day is minimized by increasing the frequency of sampling from one sample per day to two samples per day. Further, because emission limits were set based on modeling, which represented worst case emission limits from all sources at all sites in the nonattainment area occurring at the same time, the emission limits are conservative and small variations in emission limits that may occur between samples are unlikely to result in an exceedance of the NAAQS. Given that the estimated cost of continuous monitors is estimated to be over a half million dollars at a single site, concerns over reliability of continuous total sulfur analyzers in this environment, and the conservatism of the modeling approach, the TCEQ has determined that the mass balance approach relying on twice daily sampling of carbon black oil and once daily sampling of each grade of carbon black product produced is the most appropriate approach for accurately representing emissions.**

The EPA requested that the TCEQ provide an assurance that the proposed flare emission limits apply only to maintenance, startup, and shutdown (MSS) periods and not to upsets or periods of malfunctions and clarify that the analysis of historical events supporting development of emission limits and number of operating days for MSS periods does not include any malfunction events.

**The emission limits in the rules apply only to authorized emissions. This comment is further addressed in the response to comment for the associated Chapter 112 rulemaking. No changes were made based on this comment.**

The EPA commented that screening out sources at a 3 parts per billion (ppb) threshold at the maximum design value in the attainment demonstration modeling and excluding those sources from the Chapter 112 rules is not protective of the NAAQS because

those excluded sources would change emission limits or stack parameters resulting in exceedances of the NAAQS. The EPA commented that all sources included in the modeling must have enforceable limits. The EPA stated that the TCEQ did not document how the 3 ppb level is protective but relied on this threshold as an interim significant impact level (SIL) in permitting to evaluate impacts from all sources at a site rather than on a unit-by-unit basis. The EPA noted that the use of the SIL in permit modeling evaluates cumulative emission increases for all ambient air receptors rather than for individual sources at only the maximum design value receptor since the cumulative impact from multiple units at a site could represent a significant portion of the 75 ppb NAAQS. The EPA commented that the maximum design value in the attainment demonstration for Hutchinson County is 74.9 ppb, meaning that only small increases could exceed the NAAQS, and there are many receptors within a few ppb of the NAAQS.

**The TCEQ included all sources in the nonattainment area for attainment modeling. Additionally, a cumulative impact of emissions from all sources was simulated at all ambient receptors for attainment modeling. Further, all sources modeled were modeled at the enforceable emission rates, as represented, per Appendix W, from permits, registration, or rule. No sources were screened out from the attainment demonstration modeling. The commission included many small emission sources in its modeling in response to discussion with EPA Region 6 and to ensure that the modeling was representative and conservative. The emissions from these sources were based on the represented permit-enforceable emission limits, as stated in 40 Code of Federal Regulations (CFR) Part 51, Appendix W, Section 2.1.c: “Appropriate model input data should be available before an attempt is made to evaluate or apply an air quality model. Assuming the data are adequate, the greater the detail with which a model considers the spatial and temporal variations in meteorological conditions and permit-enforceable emissions, the greater the ability to evaluate the source impact and to distinguish the effects of various control strategies.” Additionally, 40 CFR Part 51, Appendix W, Section 9.2.3.1, *Considerations in Developing Emission Limits*, does not require that every emission source that is modeled have a corresponding SIP emission limit. Section 9.2.3.1 states that “[e]missions limits and resulting control requirements should be established to provide for compliance with each applicable NAAQS ... [t]he appropriate reviewing authority ... and appropriate EPA guidance should be consulted to determine the appropriate emission limits on a case-by-case basis.”**

**Reliance on permit limits established under the federally approved New Source Review program is appropriate for these emission sources, as the modeling shows their potential impact on any receptor is de minimis. No changes were made based on this comment.**

The EPA commented that permits and other data sources used to provide modeling inputs should be included in the SIP revision in greater detail, such as including not only a permit number but also reference to the revision date and location where the document can be viewed.

**Permit information is included not just in the SIP documentation but also in the rule and all the publicly available permit information can be searched and viewed**



electronically in the TCEQ records online website at [https://records.tceq.texas.gov/cs/idcplg?IdcService=TCEQ\\_SEARCH](https://records.tceq.texas.gov/cs/idcplg?IdcService=TCEQ_SEARCH). No changes were made based on this comment.

The EPA noted that unless monitors are shown to be located in the area of highest concentration, the determination of attainment must consider modeling, emissions data, and evidence of full implementation and compliance of required control measures in addition to monitoring data. The EPA stated that the current monitors are not located where the modeled maximum design value occurred in any of the nonattainment areas and that siting additional monitors at those locations would provide data to determine attainment more clearly.

**No change was made in response to this comment as monitor siting issues are beyond the scope of this SIP revision.**

#### TECHNICAL COMMENTS

The EPA requested an explanation of why the State of Texas Air Reporting System (STARS) database was not relied upon for stack parameters and historical actual emission rates.

**As explained in the SIP narrative and Appendix J: *Modeling Technical Support Document (TSD)*, the commission did not rely solely on the historical STARS data but instead used updated parameters and/or emission rates from permits and industry consultation, as needed, to ensure the most recent and accurate data were used in the attainment demonstration modeling. Further *Guidance for 1-Hour SO<sub>2</sub> Nonattainment Area SIP Submissions* (EPA, 2014; SO<sub>2</sub> SIP guidance) and *40 Code of Federal Regulations (CFR) Part 51 Appendix W* (EPA, 2017; Appendix W) require that attainment demonstration modeling be based on allowable emissions and corresponding stack parameters and not actual emissions. No changes were made based on this comment.**

The EPA commented that details should have been provided on modeling run configurations and the procedure of dividing up the large number of receptors into smaller grids. The EPA commented that such an approach is prone to errors when remerging information. The EPA also noted that the 2007 EPA memo on the Regulatory Status of Proprietary Version of American Meteorological Sociated/United States Environmental Protection Agency Regulatory Model (AERMOD) requires that the use of parallel versions of AERMOD or the approach of dividing receptors into smaller grids needed to be communicated to and approved in advance by EPA Region 6. Lastly, the EPA commented that the TCEQ did not consult appropriately with EPA Region 6; that the TCEQ's approach does not generate all information as would have been generated by one model run; and that the EPA has previously not approved such approaches.

**The draft modeling protocol provided to the EPA and the SIP revision documentation both have sections on model selection providing information on the choice of the model used in the attainment demonstration modeling. The model that TCEQ used is the EPA approved AERMOD model, version 21112. The TCEQ did not alter the code and did not parallelize it. The source code, downloaded from the EPA website (<https://www.epa.gov/scram/air-quality-dispersion-modeling-preferred->**

and-recommended-models#aermod), was compiled on the TCEQ's Linux system and used for modeling. Since the source code was not altered, the TCEQ does not agree that the EPA approval was needed prior to use nor with the EPA's characterization that the TCEQ parallelized the code. The TCEQ ran the EPA-approved AERMOD multiple times for each scenario with the same inputs with only a fraction of receptors included in each run. The results from all runs and therefore all receptors were analyzed to determine the maximum design value for a given scenario.

AERMOD is a deterministic model, and concentrations at each receptor are calculated independently from other receptors. Therefore, AERMOD results remain the same whether the model is run for all receptors in a single run, or the receptors are divided into subsets to be modeled in multiple runs. Running AERMOD multiple times with a fraction of receptors is very time efficient and advantageous for areas with multiple sources and thousands of receptors, such as the Hutchinson nonattainment area, for which a single AERMOD run for one scenario takes several days. Having over three hundred scenarios would take years to finish with a single-run approach, which is impractical and would affect SIP revision timelines. Therefore, the TCEQ does not agree with the EPA that the final AERMOD run should have been performed with all receptors included.

Along with the modeling files, the TCEQ provided a modeling run configuration file for each simulated scenario. In response to this comment, a section has been added to Appendix J (Section 10: *Modeling Run Information and Archive*) that provides a description on running AERMOD with a subset of modeling receptors and merging results into one file. Information is also provided on where and how the modeling files can be accessed from the TCEQ Air Modeling FTP site.

The EPA indicated that no fence line receptors were included at the IACX Rock Creek Gas Plant and that it was not clear if adding those receptors would influence the maximum design value.

The commission added the fence line receptors along the IACX ambient boundary and re-simulated all scenarios for the Hutchinson County nonattainment area. Though there were minor changes, in the range of +0.2 to -0.3 ppb in the maximum design value for some scenarios, the controlling scenario design value did not change (scenario 16 with a maximum design value of 74.7 ppb). Table 8.9: *Modeling Scenarios and Maximum Modeled DV* in Appendix J was updated to reflect the changes and the results description in the SIP documentation was updated.

The EPA commented that the ambient air determination was based on various access limiting procedures, including periodic patrols of a facility's perimeter. The EPA commented that companies should be required to submit plans and records of access limiting procedures and periodic patrols to the TCEQ and the EPA. The EPA also commented that TCEQ and EPA approval should be required for modifications of the plans.

Per the EPA's 2019 Revised Policy on Exclusions from "Ambient Air," "the atmosphere over land owned or controlled by the stationary source may be excluded from ambient air where the source employs measures, which may include

physical barriers, that are effective in precluding access to the land by the general public.” To make ambient air determinations, companies in Hutchinson provided the EPA and the TCEQ with extensive documentation detailing the current restriction measures in place that secure their property against access by the general public. Several of the companies are fenced and already have signage and restrictions that limit access. Where restrictions are not currently in place, companies provided letters addressed to the EPA committing to putting those restrictions in place by the compliance deadline. The plans include details about fencing, signage, and patrolling when appropriate.

The TCEQ does not agree with the EPA that TCEQ and EPA approval is necessary for changes to property boundary restriction plans. The TCEQ is not aware of any precedent or EPA guidance requiring that ambient air property restriction measures be made enforceable through the SIP. As a matter of practice, companies have a vested interest in maintaining and securing their properties against public access. Other regulations may already apply that would require the companies to strictly monitor public access to their properties. There are also potential national security concerns that could arise with requiring property boundary restriction plans to be reviewed and approved by the TCEQ and the EPA.

No changes were made based on this comment.

# Texas Commission on Environmental Quality



## ORDER ADOPTING REVISION TO THE STATE IMPLEMENTATION PLAN

**Docket No. 2022-0133-SIP**  
**Project No. 2021-011-SIP-NR**

On October 5, 2022, the Texas Commission on Environmental Quality (Commission), during a public meeting, considered adoption of a revision to the State Implementation Plan (SIP) consisting of an attainment demonstration for the Hutchinson County 2010 One-Hour Sulfur Dioxide (SO<sub>2</sub>) Nonattainment Area (Hutchinson County 2010 SO<sub>2</sub> Attainment Demonstration SIP Revision). The Hutchinson County 2010 SO<sub>2</sub> Attainment Demonstration SIP Revision addresses federal Clean Air Act requirements for SO<sub>2</sub> nonattainment areas including a comprehensive inventory of current SO<sub>2</sub> emissions; evaluation and provision for implementing all reasonably available control measures and reasonably available control technology; air quality dispersion modeling to demonstrate attainment; a reasonable further progress demonstration; contingency measures; and certification that nonattainment New Source Review requirements are met. The Hutchinson County 2010 SO<sub>2</sub> Attainment Demonstration SIP Revision included an associated rulemaking, 30 Texas Administrative Code, Chapter 112, Subchapter F, that provided the enforceable control strategy necessary to demonstrate attainment, which was considered separately by the Commission. Under Tex. Health & Safety Code Ann. §§ 382.011, 382.012, and 382.023 (West 2016), the Commission has the authority to control the quality of the state's air and to issue orders consistent with the policies and purposes of the Texas Clean Air Act, Chapter 382 of the Tex. Health & Safety Code. Notice of the public hearing regarding the proposed Hutchinson County 2010 SO<sub>2</sub> Attainment Demonstration SIP Revision was published in the April 29, 2022, issue of the *Texas Register* (47 TexReg 2598) and the April 15, 2022 editions of the *Amarillo Globe News* and the *Borger News-Herald*. The hearing notice was also published in Spanish in the April 20, 2022 edition of *El Mensajero* newspaper.

Pursuant to 40 Code of Federal Regulations § 51.102 and after proper notice, the Commission offered the public an opportunity for a public hearing to consider the Hutchinson County 2010 SO<sub>2</sub> Attainment Demonstration SIP Revision. Proper notice included prominent advertisement in the area affected at least 30 days prior to the date of the hearing. A public hearing was held in Borger, Texas on May 19, 2022.

The Commission circulated hearing notices of its intended action to the public, including interested persons, the Regional Administrator of the EPA, and all applicable local air pollution control agencies. The public was invited to submit data, views, and recommendations on the proposed Hutchinson County 2010 SO<sub>2</sub> Attainment Demonstration SIP Revision, either orally or in writing, at the hearing or during the comment period. Prior to the scheduled hearing, a copy of the proposed attainment demonstration SIP revision was available for public inspection at the Commission's central office and on the Commission's website.

Data, views, and recommendations of interested persons regarding the proposed attainment demonstration SIP revision were submitted to the Commission during the comment period and were considered by the Commission as reflected in the analysis of testimony incorporated by reference to

this Order. The Commission finds that the analysis of testimony includes the names of all interested groups or associations offering comment on the proposed attainment demonstration SIP revision and their position concerning the same.

IT IS THEREFORE ORDERED BY THE COMMISSION that the Hutchinson County 2010 SO<sub>2</sub> Attainment Demonstration SIP Revision incorporated by reference to this Order is hereby adopted. The adopted Hutchinson County 2010 SO<sub>2</sub> Attainment Demonstration SIP Revision is incorporated by reference in this Order as if set forth at length verbatim in this Order.

IT IS FURTHER ORDERED BY THE COMMISSION that on behalf of the Commission, the Chairman should transmit a copy of this Order, together with the adopted Hutchinson County 2010 SO<sub>2</sub> Attainment Demonstration SIP Revision to the Regional Administrator of EPA as a proposed revision to the Texas SIP pursuant to the Federal Clean Air Act, codified at 42 U.S. Code Ann. §§ 7401 - 7671q, as amended.

If any portion of this Order is for any reason held to be invalid by a court of competent jurisdiction, the invalidity of any portion shall not affect the validity of the remaining portions.

TEXAS COMMISSION ON  
ENVIRONMENTAL QUALITY

---

Jon Niermann, Chairman

---

Date Signed