



# Texas Voluntary Marginal Conventional Well Plugging Program (TxMCW)

Katy Drake, Program Specialist, Air Grants Division  
February 2025 SIM

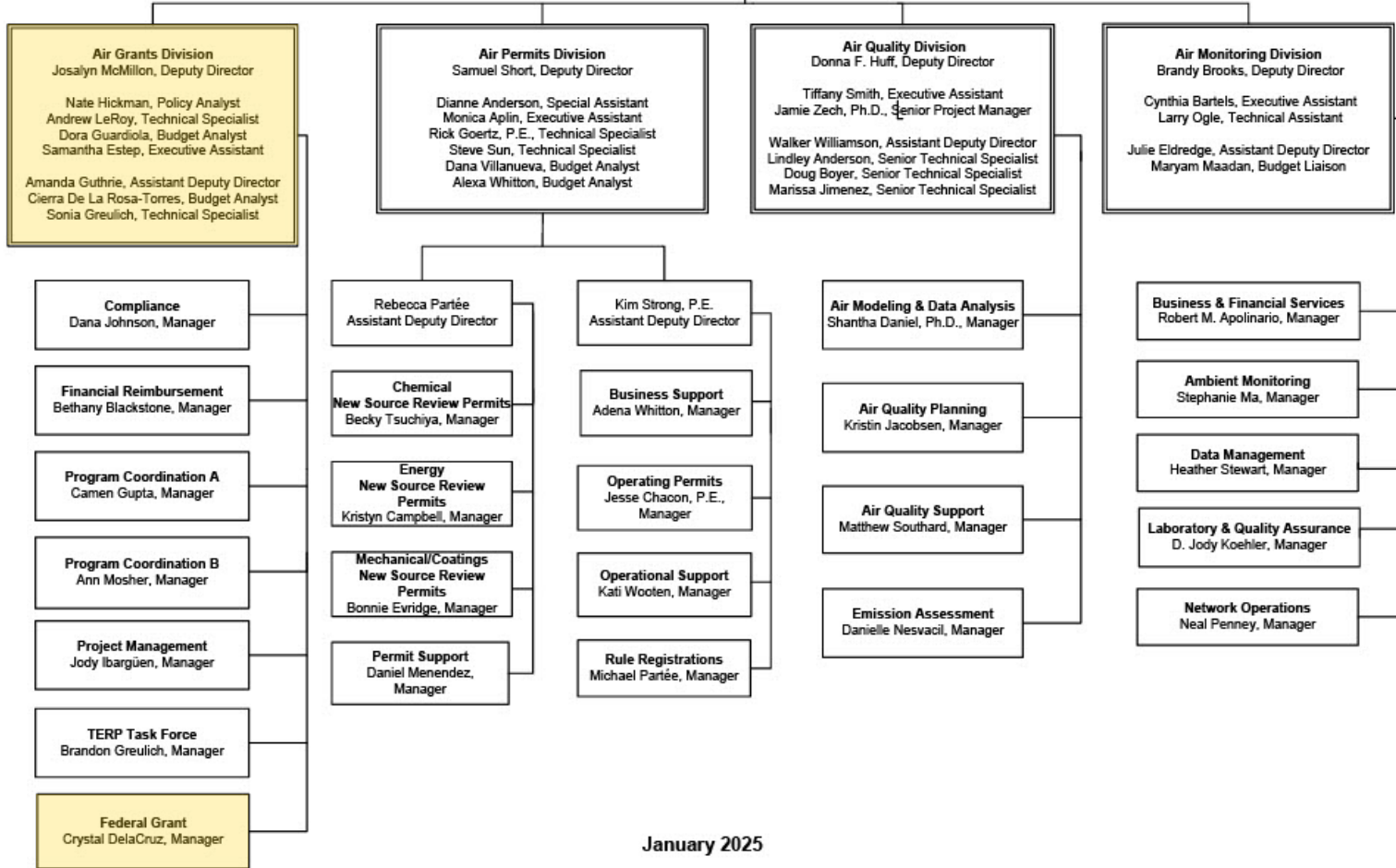
# Agenda

- Background & Definitions
- TxMCW Overview
- Wells in Texas
- Plugging and Abandonment
- Well Prioritization Plan
- Methane Measurement Plan
- Stakeholder Engagement
- Current Status

**Cory Chism, Director**

Beryl Thatcher, Special Assistant  
 Debbie Maldonado, Executive Assistant  
 James Nolan, Technical Specialist  
 Kasey Savanich, Project Manager  
 Chinenye Chinwego, Data Analyst  
 Loren Sammon, Budget Liaison

**OFFICE OF AIR  
 Fiscal Year 2025  
 Positions 595**



January 2025

# Air Grants Division

Also administers:

- Texas Emissions Reduction Plan Program (TERP)
- Texas Volkswagen Environmental Mitigation Program (TxVEMP)



# Inflation Reduction Act (IRA) Methane Emission Reduction Program (MERP): Mitigating Emissions from Marginal Conventional Wells (MCWs)



**WHO:** EPA, DOE

**WHAT:** \$134.1M in grant funding

**WHEN:** December 2023 + 5 years

**WHERE:** Texas

**WHY:** Reduce methane emissions

**HOW:** Voluntary MCW closures

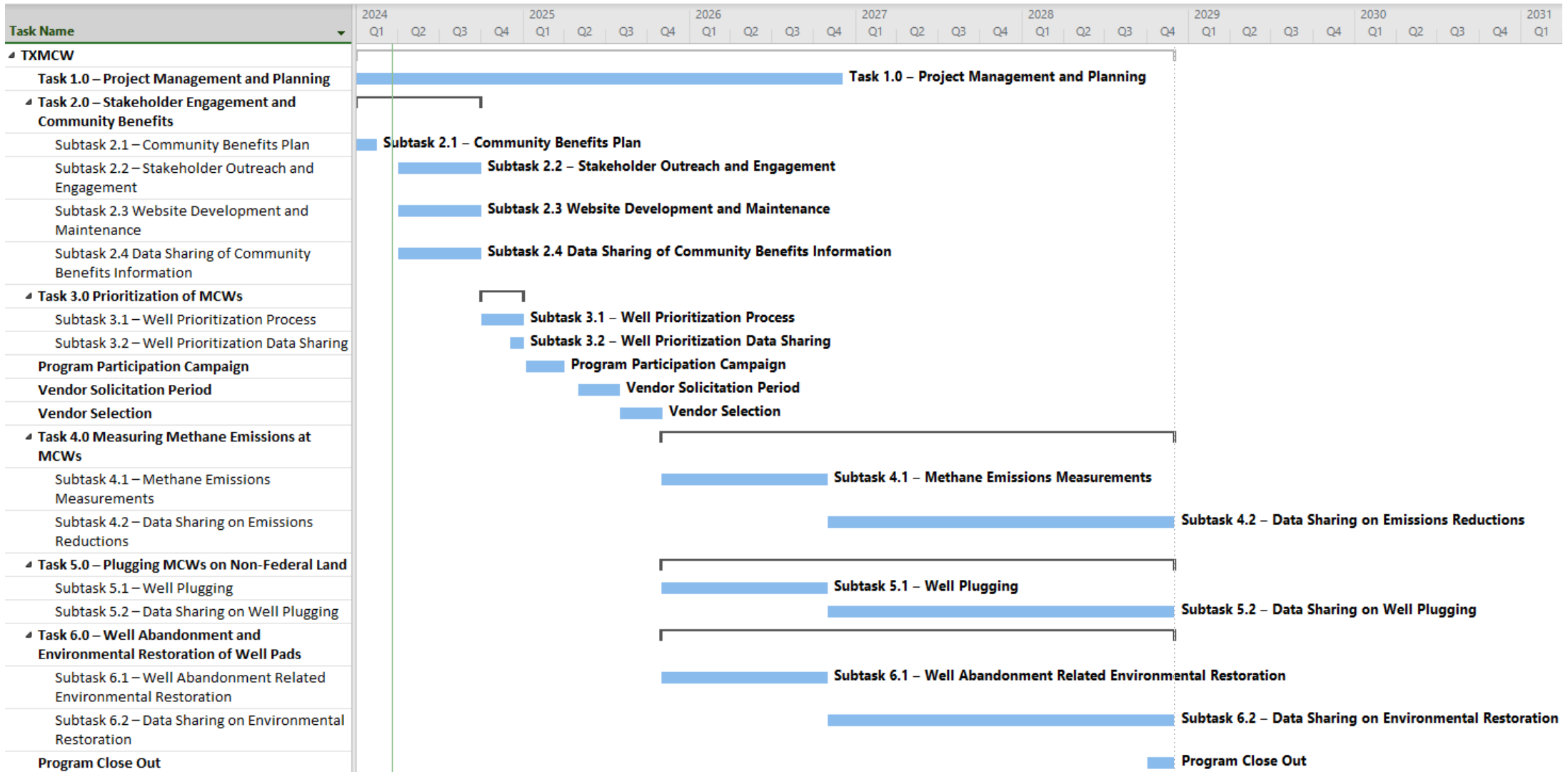
# Definitions

- Conventional Well
  - Vertical oil and gas well
- Marginal Conventional Well (MCW)
  - $\leq 15$  barrels of oil equivalent per day (BOED), or
  - $\leq 90$  thousand cubic feet (Mcf) of gas per day  
(*1 BOE = 6 Mcf*)
  - Known owner or operator
  - Can be producing or idle

# TxMCW Overview

- Voluntary plugging and abandonment of MCWs
- Goals
  - Plug MCWs to mitigate environmental pollutants
  - Measure methane emissions
  - Support environmental restoration
- Public website: [www.txmcw.org](http://www.txmcw.org)

# TxMCW Program Timeline

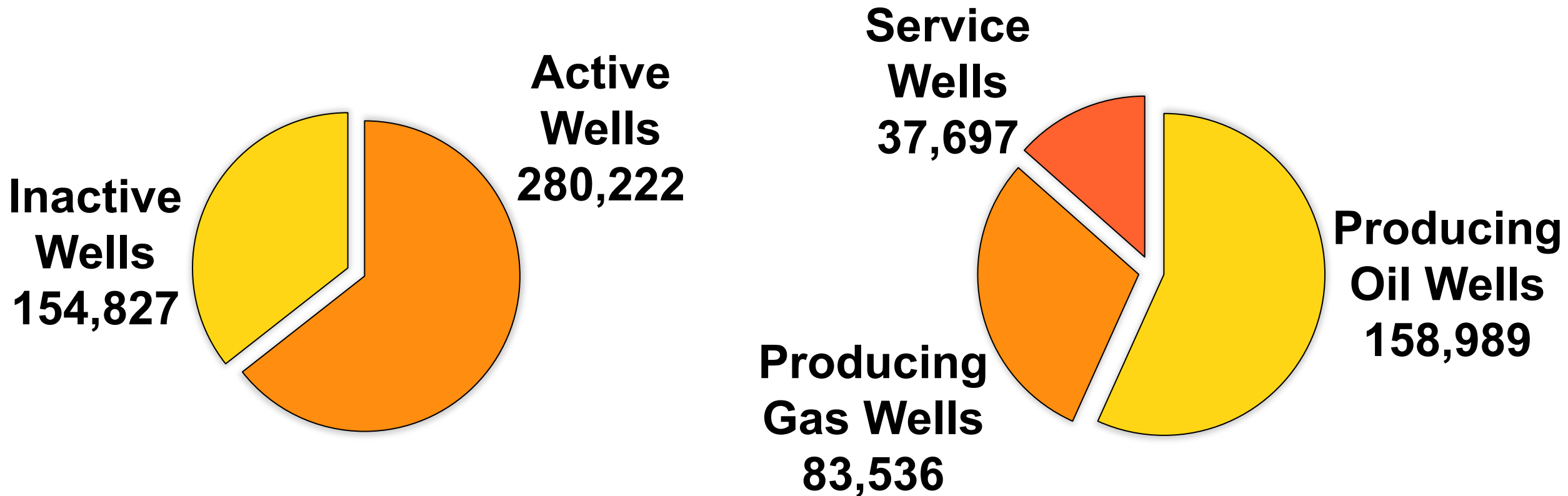




# Oil and Gas Wells in Texas

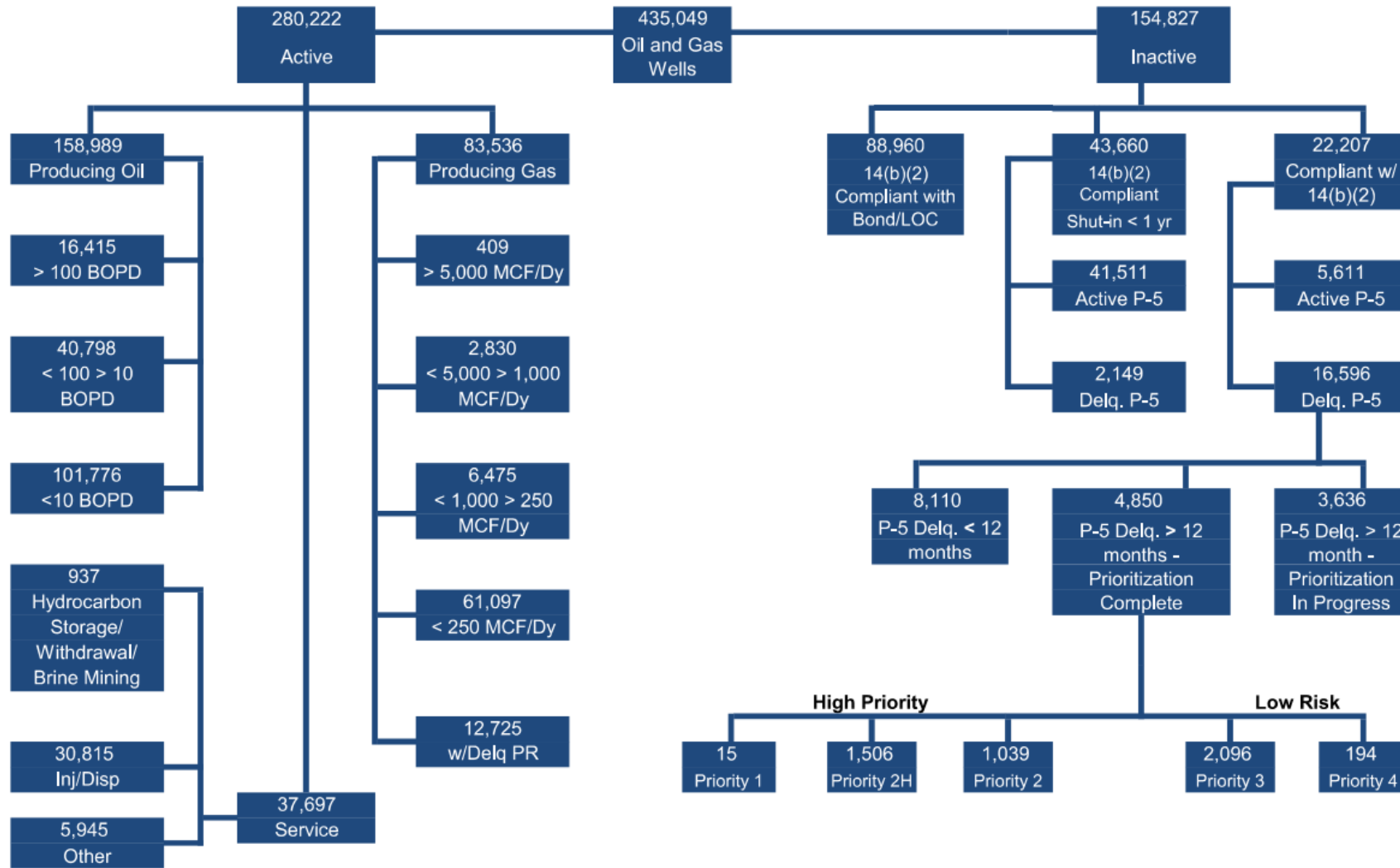
As of December 31, 2024

## 435,049 Oil and Gas Wells



# Wells Monitored by the Railroad Commission

As of December 31, 2024



# Well Plugging and Abandonment

Railroad Commission (RRC) requirements:

- Notice and Supervision
- Review and Approval
- Cementing
- Methods
- Additional Requirements
- Post-Plugging

# TxMCW Plugging & Abandonment Activities

- Preparation of well pad
- Removal of well bore casing
- Placement of cement plugs
- Excavation around well head and well capping before surface restoration
- Support of activities necessary for plugging

# Well Prioritization Plan

- Goals
  - Minimize methane and other greenhouse gas emissions
- Criteria
  - Prioritize wells with higher methane emissions
  - Production rates
  - Number of wells by owner
  - Human health impacts
  - Water quality and flood resilience
- Weighted criteria imported into PRIMO tool

# Methane Measurement Plan

- Measurement of methane emissions prior to plugging
- Approaches
  - Qualitative
    - *Must use established survey*
  - Quantitative
    - *Minimum detection limit (MDL) of less than 100 grams/hour (g/h)*
- Verification that plugged wells are no longer emitting methane

# Stakeholder Engagement



Texas has a multitude of marginal conventional wells



TCEQ participates with stakeholders



Air Grants Division hosts in-person and online events



TxMCW staff engages with MCW stakeholders



The program is conducting outreach efforts

# Current Status



- Outreach efforts
- What's next
  - Solicitation periods and related documents
  - Working internally with:
    - Procurements & Contracts Section
    - Contracts, Employment Law & Ethics Section



# Stay in Touch



## Katy Drake

**Texas Voluntary Marginal Conventional Well Plugging Program (TxMCW)**  
Federal Grant Section, Air Grants Division  
Texas Commission on Environmental Quality

**Email:** [Katy.Drake@tceq.texas.gov](mailto:Katy.Drake@tceq.texas.gov)

**Program Email:** [TxMCW@tceq.texas.gov](mailto:TxMCW@tceq.texas.gov)

**Program Website:** [www.txmcw.org](http://www.txmcw.org)