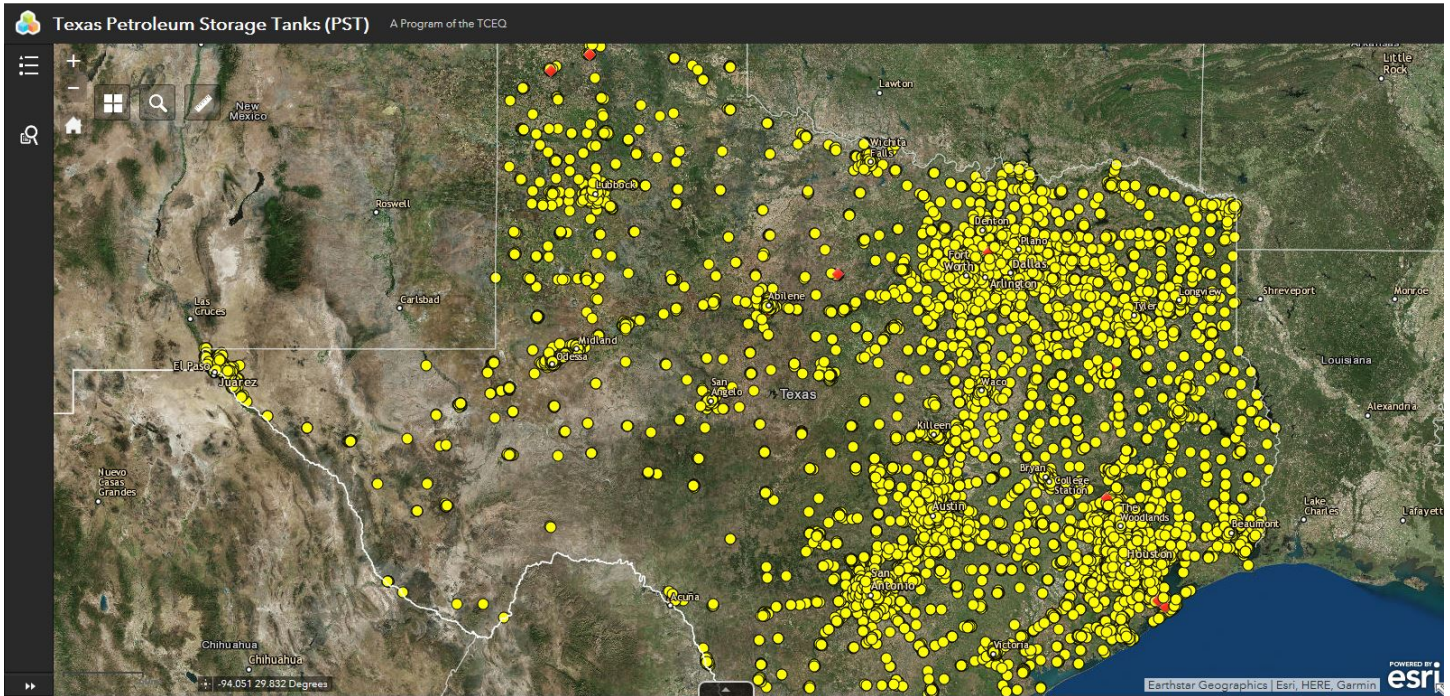


Petroleum Storage Tanks

User Guide



Texas Commission on Environmental Quality



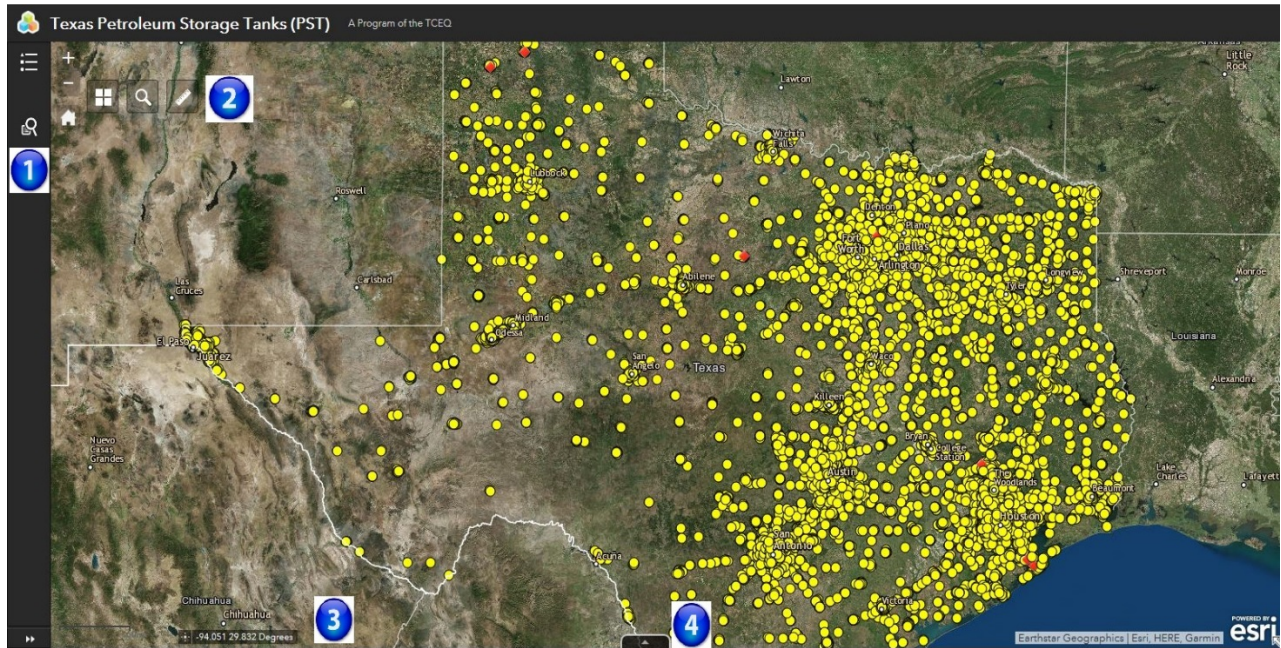
Remediation Division

Contents

Application Overview	3
Navigating Around the Map	4
Main Toolbar	4
Queries and Legend	5
Coordinate Indicator	7
Attribute Table	7

Application Overview

The image below provides an overview of the tools available in this viewer. The user guide is organized into these four basic categories.



1 Main Toolbar

3 Coordinate Indicator


2 Queries and Legend


4 Attribute Table


Navigating Around the Map


Main Toolbar:




 **Zoom In** – Click this button once or multiple times to zoom in at fixed increments.

 **Zoom Out** – Click this button once or multiple times to zoom out at fixed increments.

 **Home** – Click once to return to the default extent

 **Basemap** – click to select the background in the map viewer. The aerial imagery basemap is the default. There are 12 different maps to choose from. Note: Some basemaps (such as Open Streetmap) are not visible when zoomed in too close.

 **Search**– Type in an address or place into the bar to search for a location. As you type, you will be presented with similar matches. If you see your desired location appear, simply click on it and the map will zoom to that location. Or you can complete typing in the location and then press Enter on the keyboard or click the magnifying glass. You can click the X on the bar to clear out the search bar.

The following are some examples:

- Addresses: 100 Congress Ave, Austin, TX
- Place Names: Zilker Park
- Counties: Travis County
- Cities: Austin
- Coordinates: 30.274598, -97.740374
- Intersections: Parmer Ln and Lamar Blvd



Measure - enables the user to measure point, linear, and area features on the map. There are three different ways to measure features on the map:



Area – Click this button, choose a unit of measure from the drop-down list, then single-click the first point of your polygon on the map. Continue to single-click until you have finished measuring your area feature. Double-click to end. Results will appear in the Measure window.



Distance - Click this button, choose a unit of measure from the drop-down list, then single-click the first point of your line on the map. Continue to single-click until you have finished measuring your linear feature. Double-click to end. Results will appear in the Measure window.

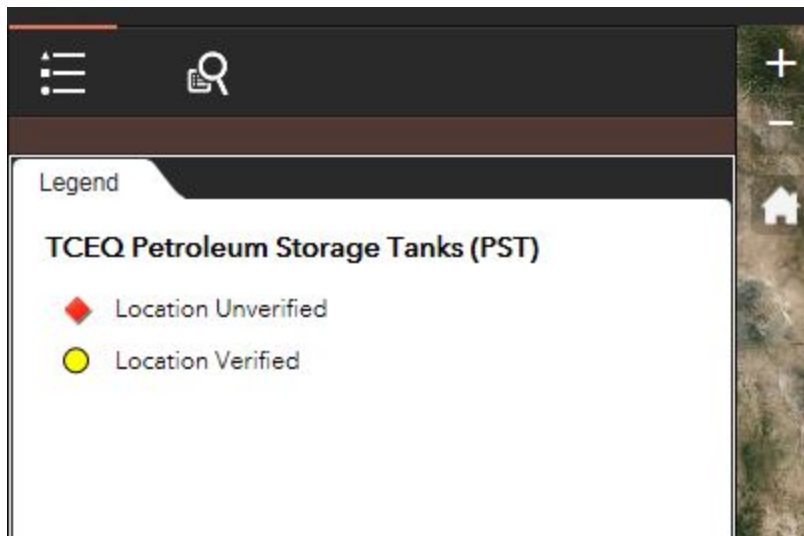



Location – Click this button, choose a unit of measure from the drop-down list, then click a point on the map then move the mouse across the map. Result will display the coordinates for both the green indicator and cursor.

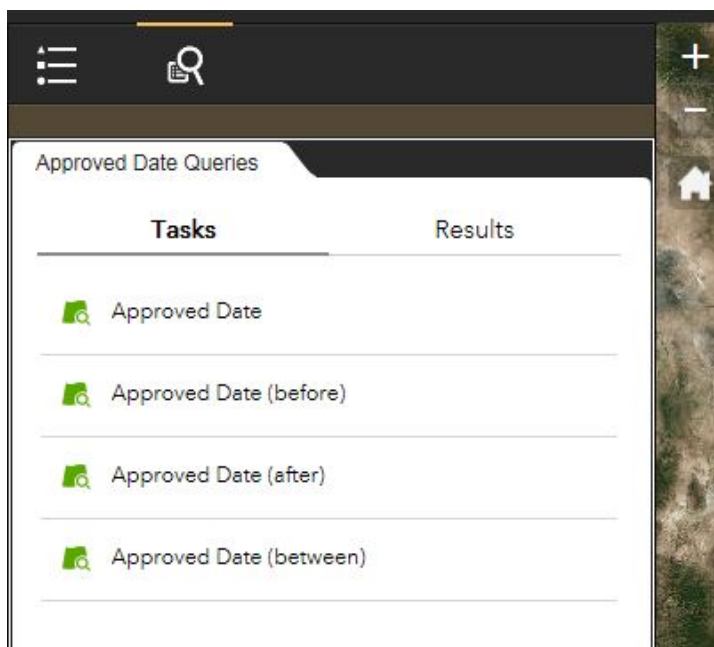
Queries and Legend:

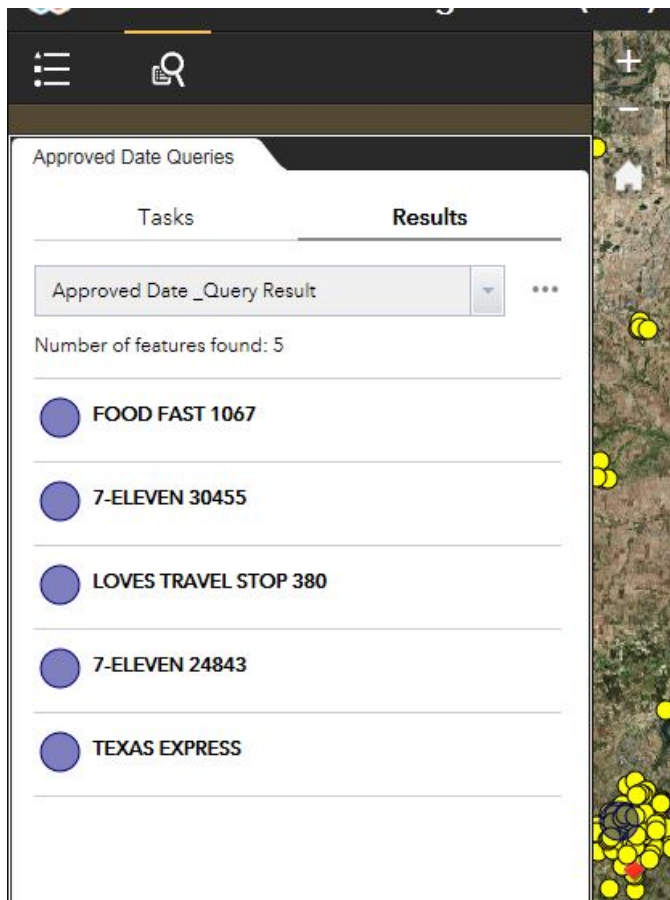


Legend – shows the symbology for the current layers in the map extent. Simply click the Legend button on the far left side of the browser. In the PST Viewer, there are only two symbols: verified and unverified.




 **Query** – used to select and execute predefined queries. Click the Query tool to search for a particular Approved Date, or an Approved Date within a range of time. The site is highlighted on the map and a summary appears in the Results pane.





Coordinate Indicator:



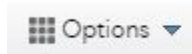
Click this  tool, then click anywhere on the map to obtain the coordinates in decimal degrees. The tool will also show the coordinates of your current mouse position over the map

Attribute Table:

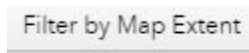
The table contains information about Petroleum Storage Tanks and is arranged so

that each row represents a feature and each column represents a unique PST location and its attributes.

shape	pst_id	m	tda_pst_id	lat_dd	long_dd	FAC_ID	UST_TYPE	APPROVED_DATE	ENERGY_ACT	NUM_ACTIVE_US	FACILITY_NAME	ADDRESS	CITY	STATE
	0043216	RN102832623		28.888840	-99.081630	43216	FULLY REGULATED	8/19/2012	Y	2	TXDOT PEARSA	1522 E COLORADO ST	PEARSALL	TX
	0043361	RN102355179		30.735110	-98.455420	43361	FULLY REGULATED	8/20/2016	Y	3	INDIAN HILLS STOP N GO	15801 E STATE HIGHWAY 29	BUCHANAN DAM	TX
	0064992	RN101700557		30.514500	-97.734850	64992	FULLY REGULATED	1/6/2015	Y	2	BRUSHY CREEK STOP	17303 GREAT OAKS DR	ROUND ROCK	TX
	0065014	RN104744760	44061	26.733950	-98.371280	65014	FULLY	3/03/2016	Y	3	A707 CHUCK	101 N RENTSCH	PAIMINPW	TX



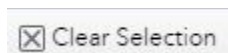
Options – use the Options drop down menu to filter attributes, show and hide columns, or to export the table to an Excel spreadsheet



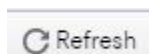
Filter by Map Extent – click this button to only show the attribute information for PSTs in the current map extent



Zoom To – after selecting a unique PST in the table, click this button to zoom to its location



Clear Selection – click this button to clear out your previous selections and show all PSTs



Refresh – click this button to reload the attribute table