

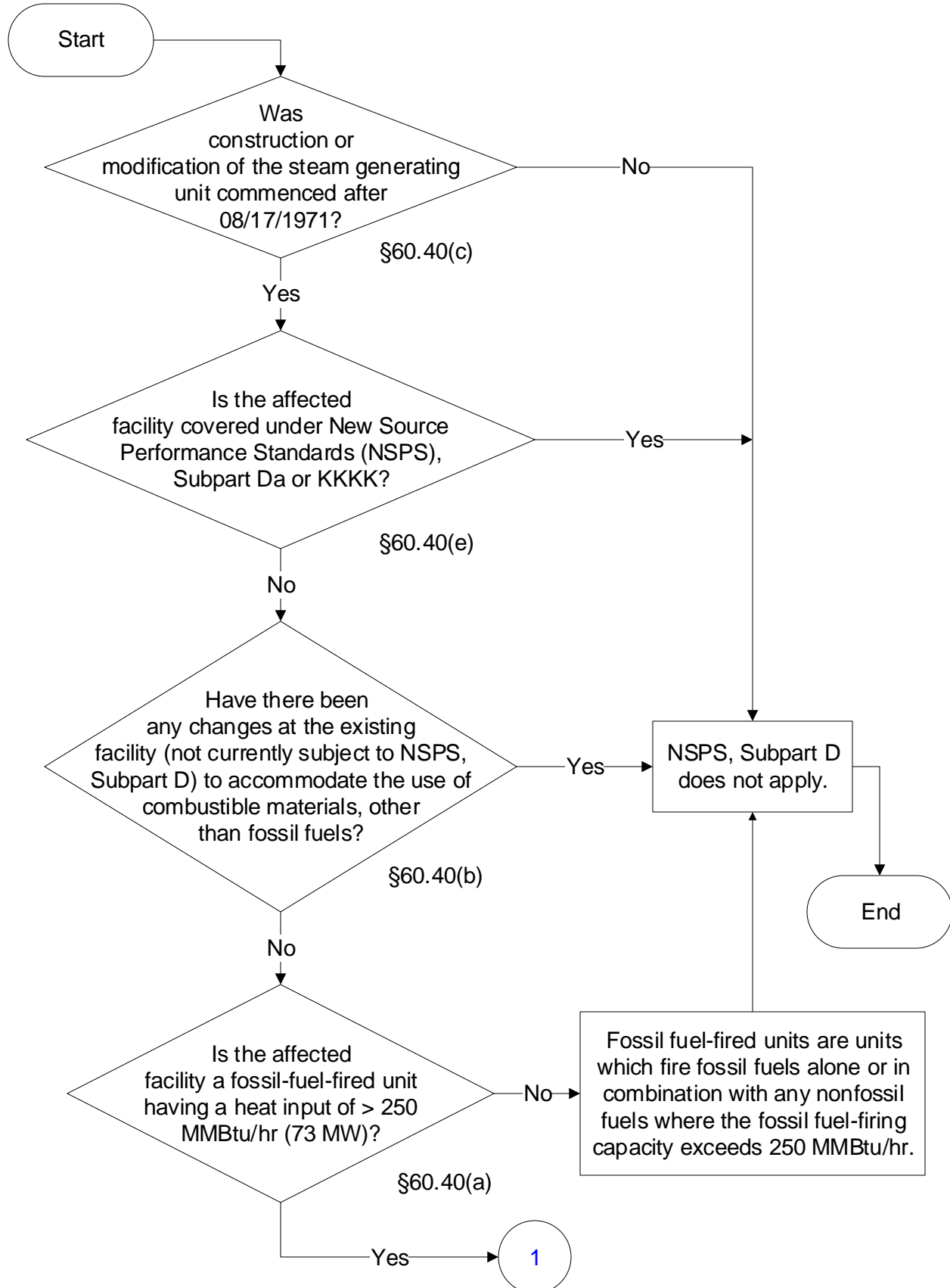


Below is a flowchart describing 40 CFR Part 60, Subpart D.

For the text of the statute/rule, please go to

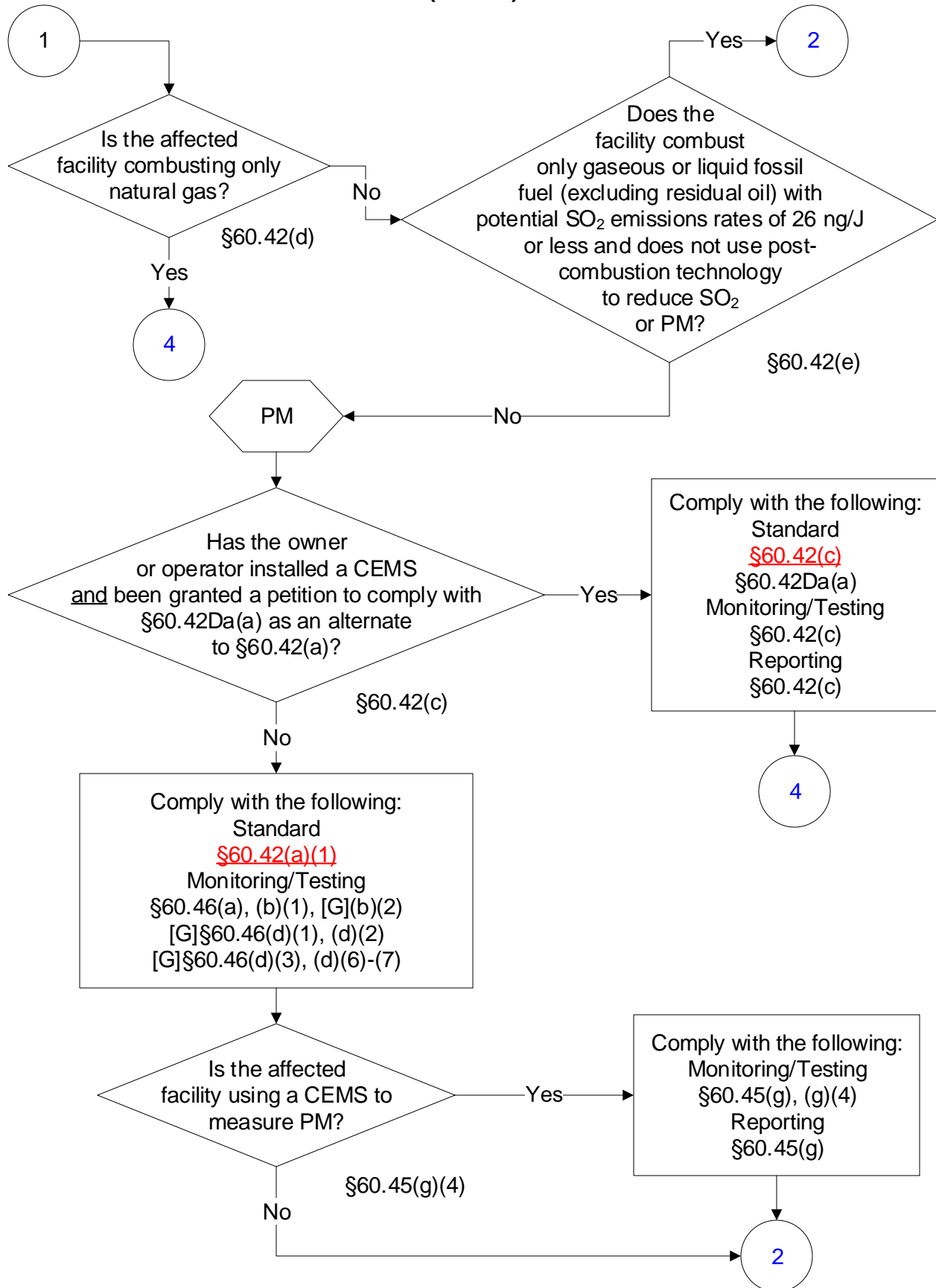
[40 CFR Part 60, Subpart D](#)

(1 of 13)



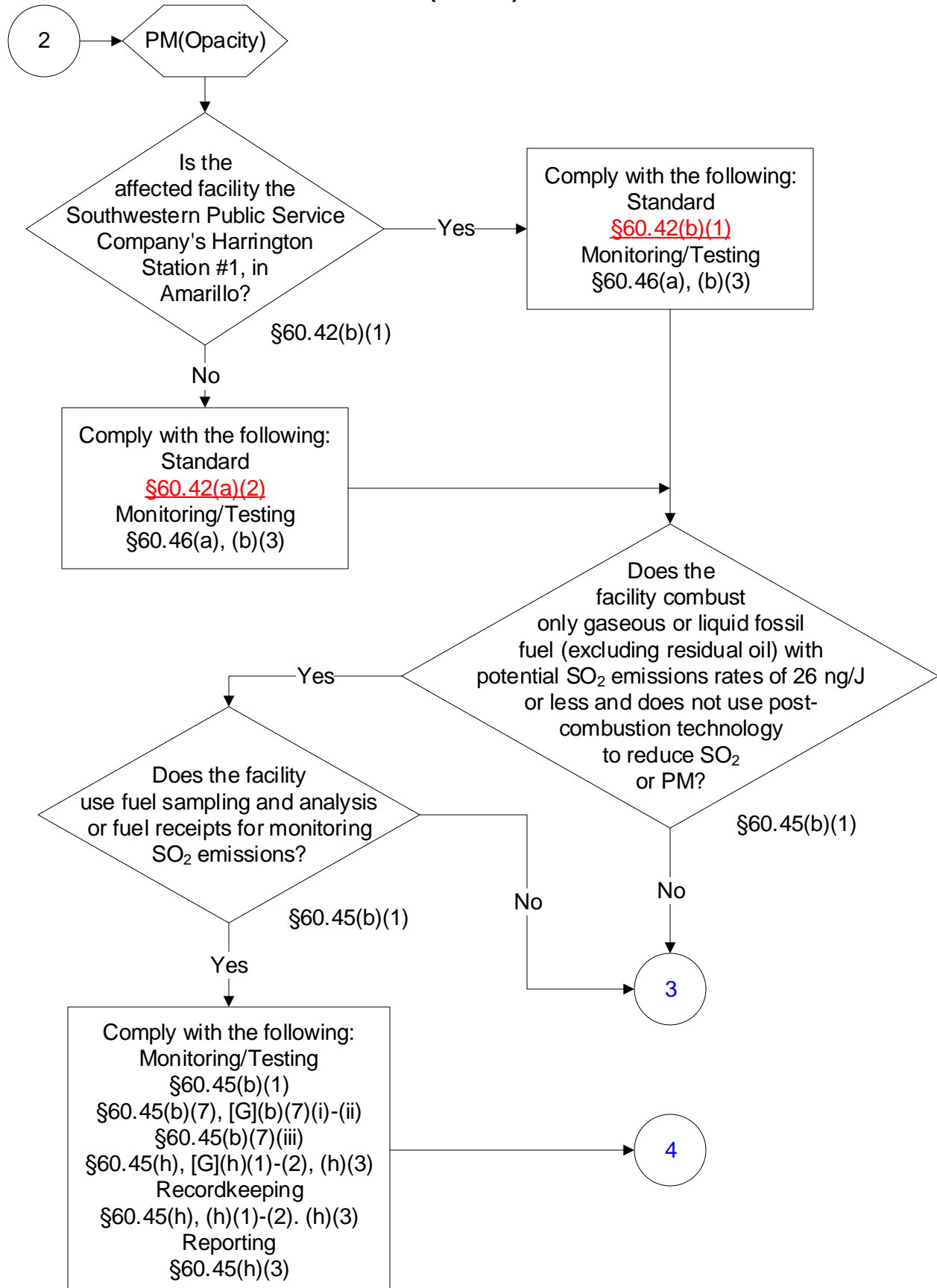
40 CFR Part 60, Subpart D-Standards of Performance for Fossil-Fuel-Fired Steam Generators

(2 of 13)



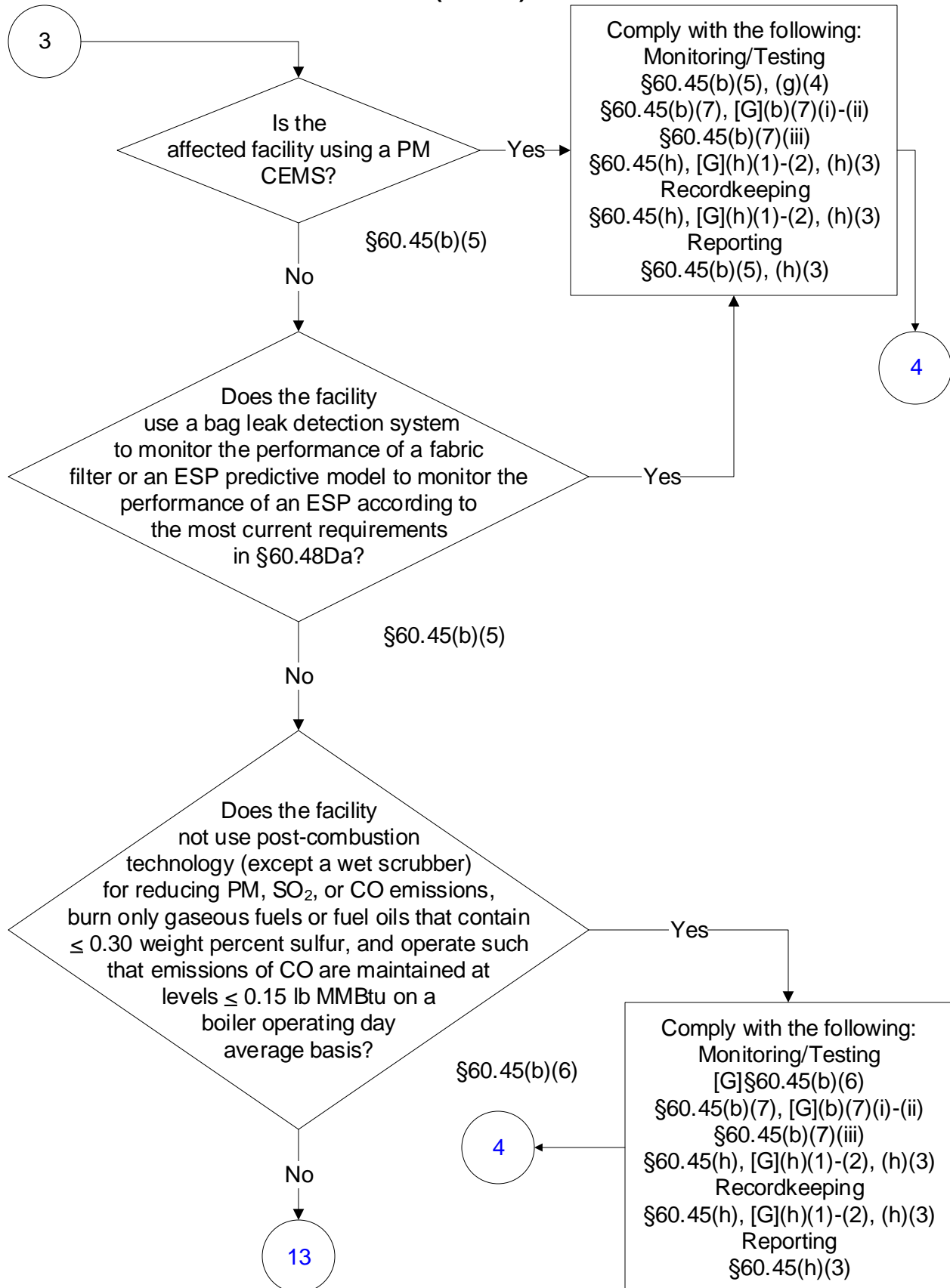
40 CFR Part 60, Subpart D-Standards of Performance for Fossil-Fuel-Fired Steam Generators

(3 of 13)

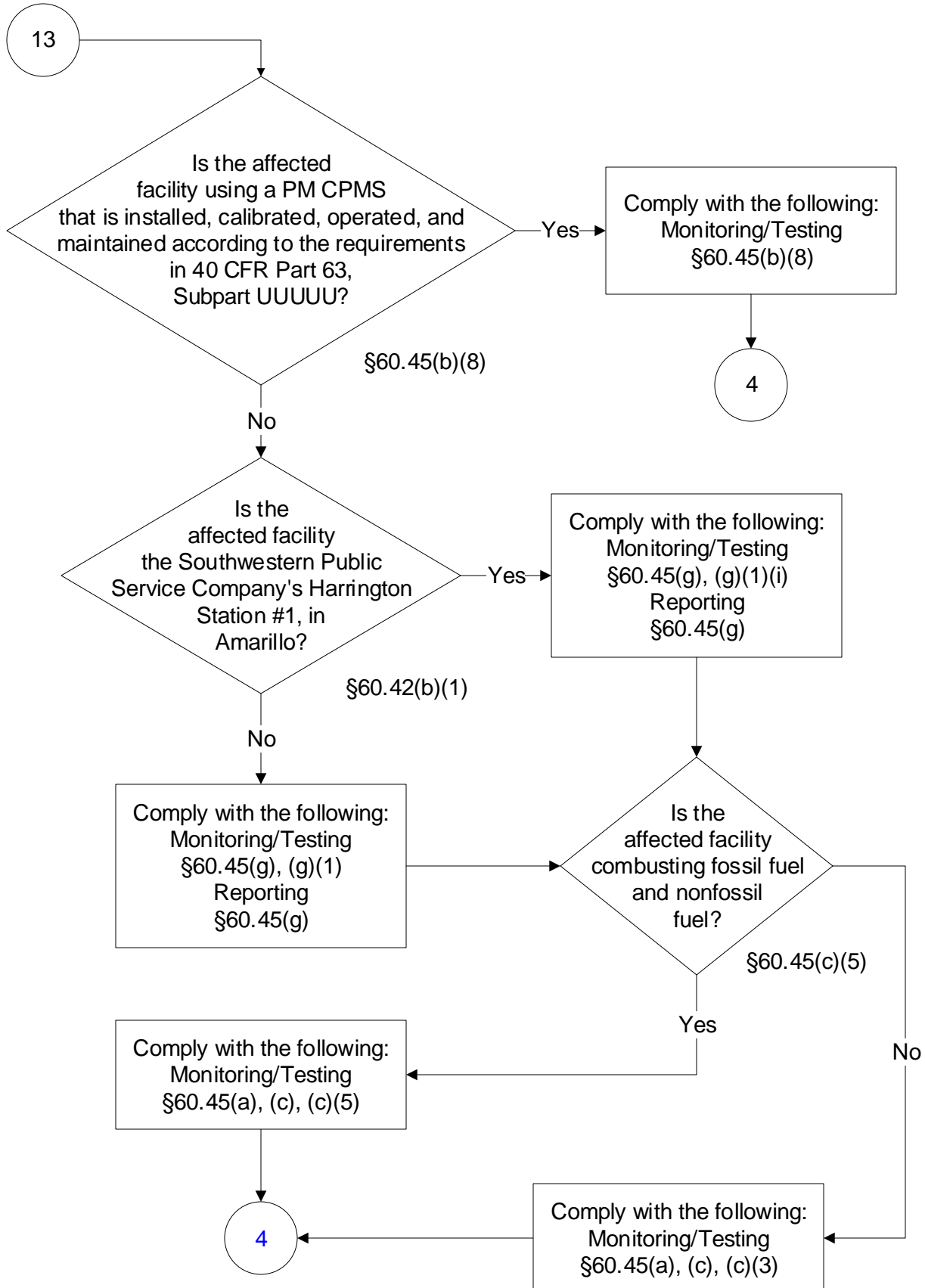


40 CFR Part 60, Subpart D-Standards of Performance for Fossil-Fuel-Fired Steam Generators

(4 of 13)

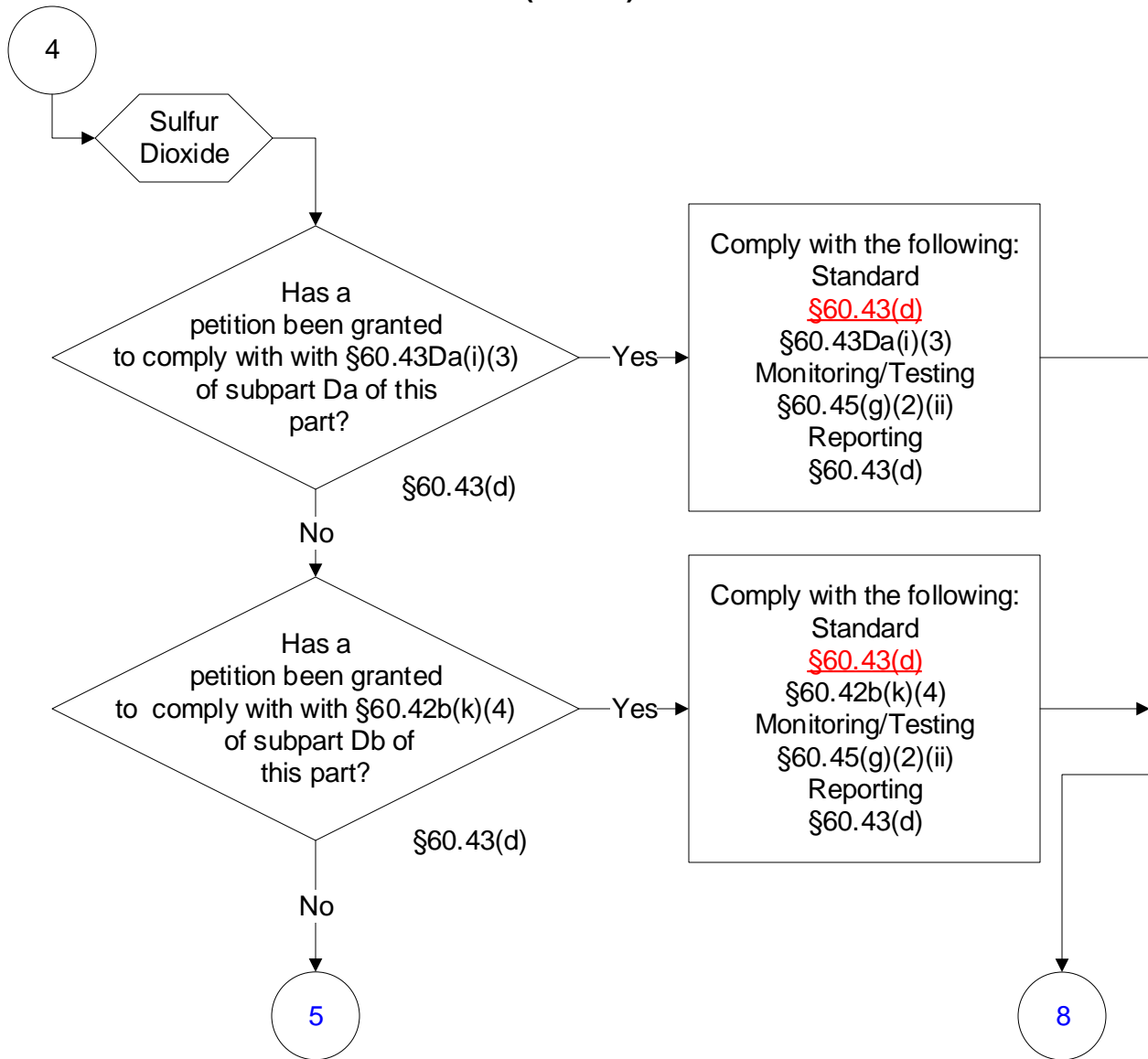


40 CFR Part 60, Subpart D-Standards of Performance for Fossil-Fuel-Fired Steam Generators (5 of 13)



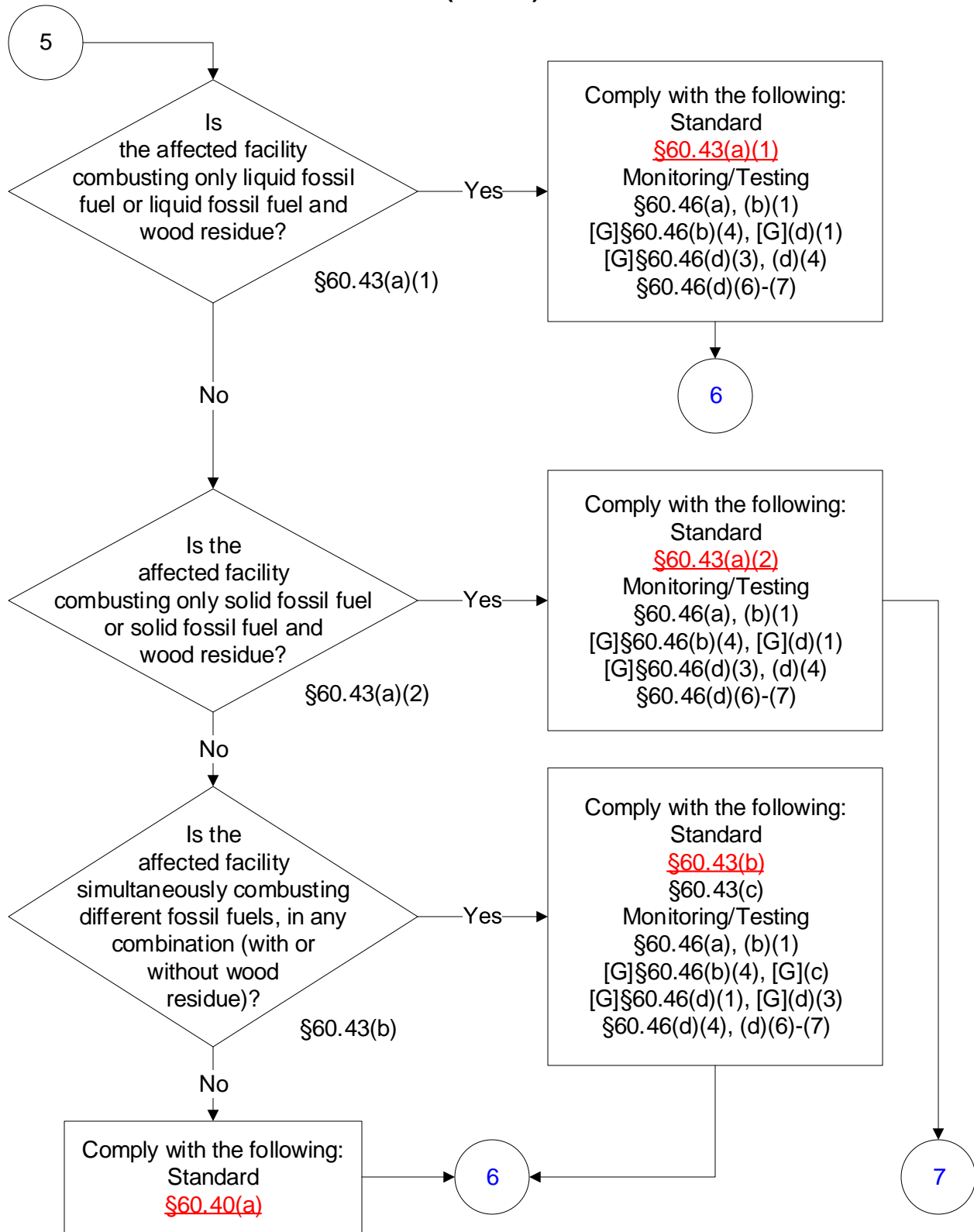
40 CFR Part 60, Subpart D-Standards of Performance for Fossil-Fuel-Fired Steam Generators

(6 of 13)



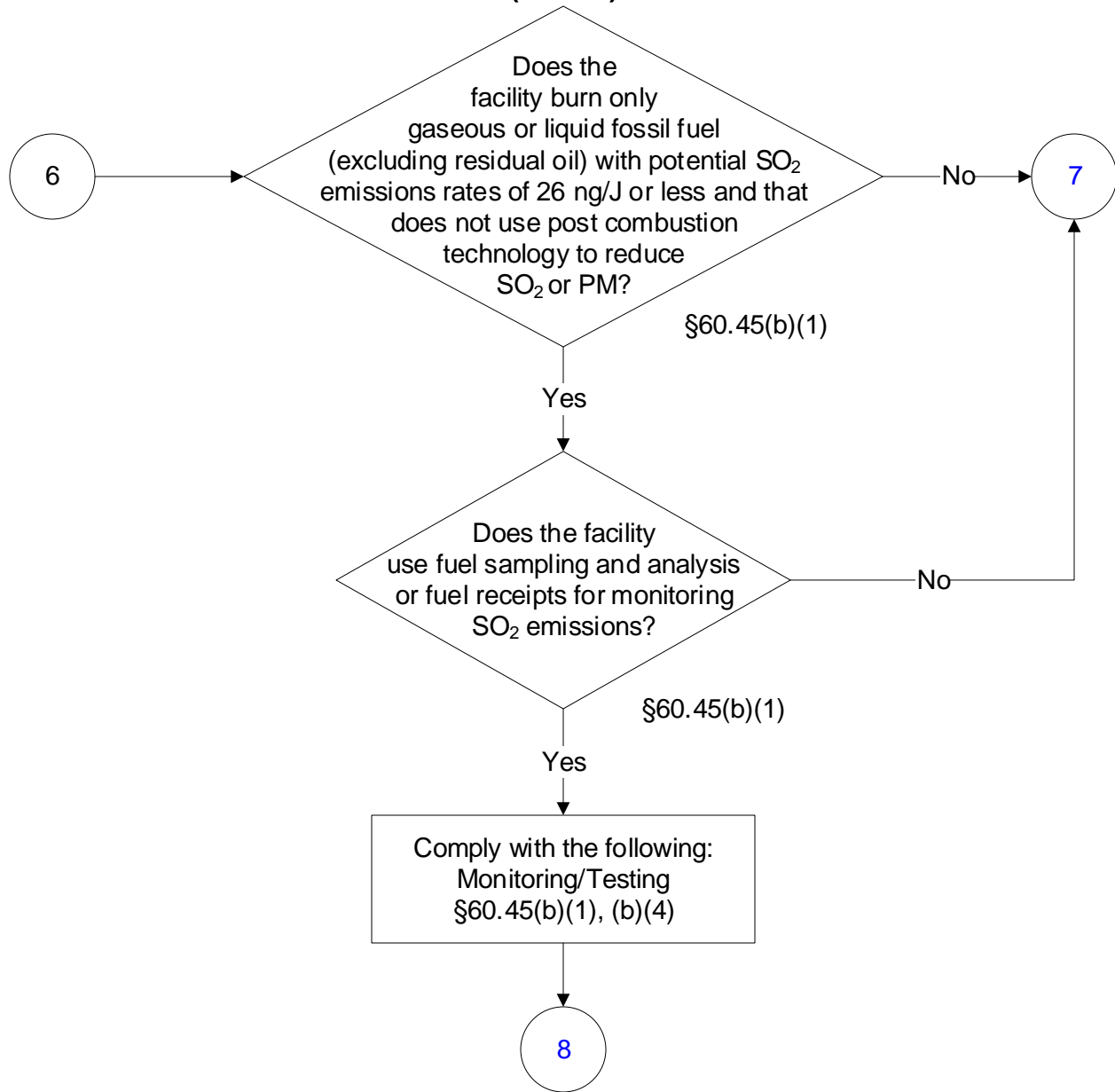
40 CFR Part 60, Subpart D-Standards of Performance for Fossil-Fuel-Fired Steam Generators

(7 of 13)



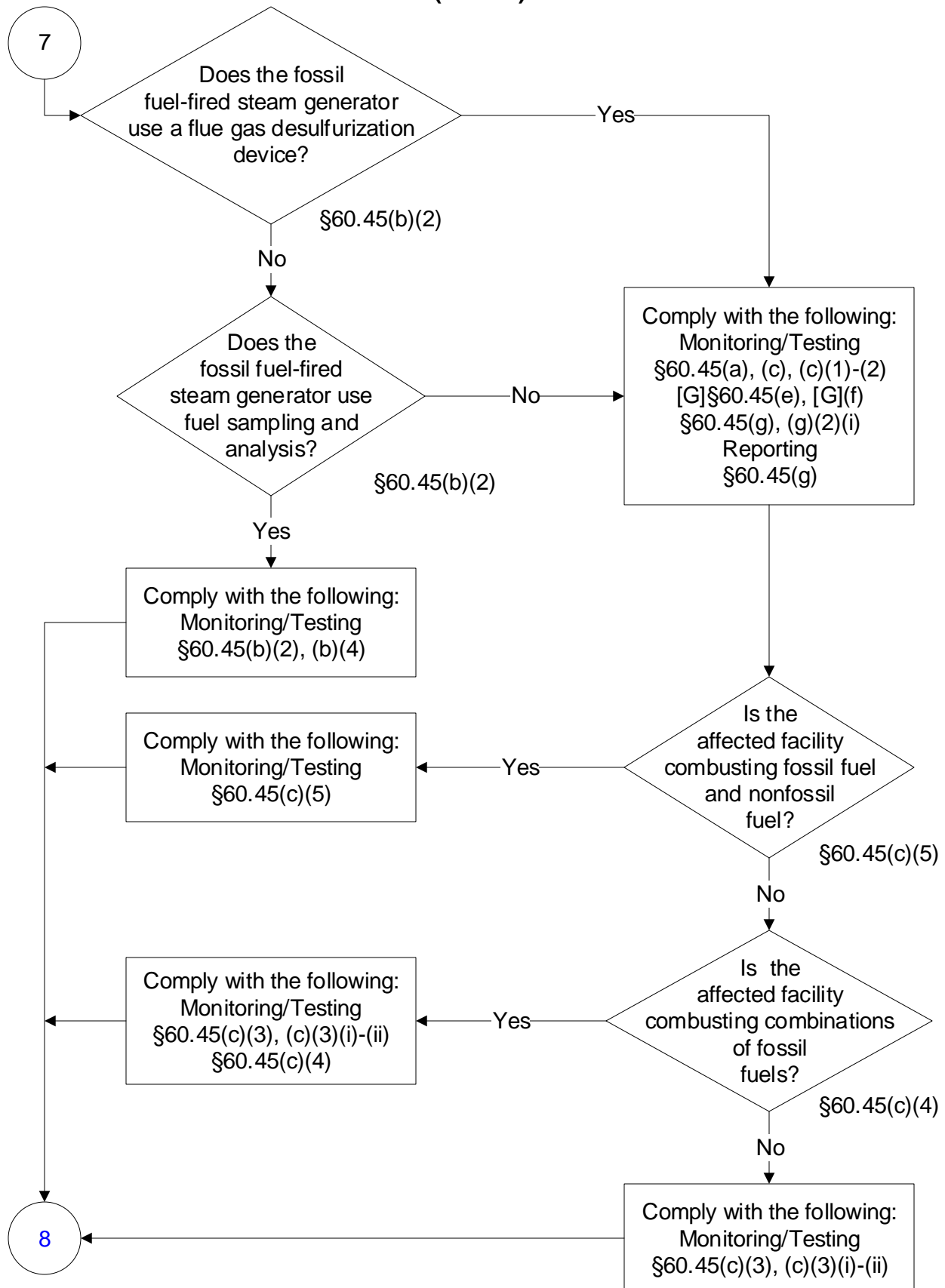
40 CFR Part 60, Subpart D-Standards of Performance for Fossil-Fuel-Fired Steam Generators

(8 of 13)



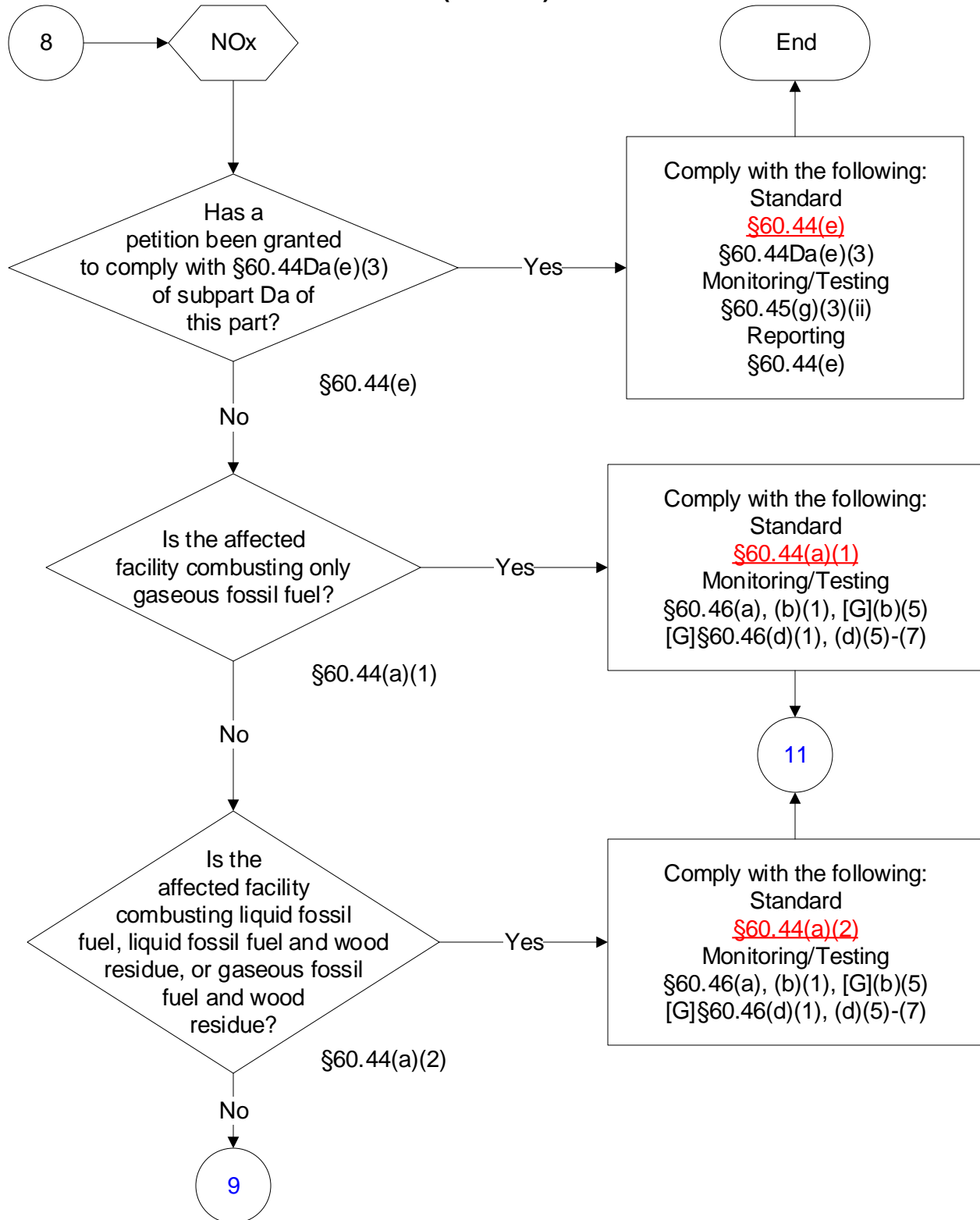
40 CFR Part 60, Subpart D-Standards of Performance for Fossil-Fuel-Fired Steam Generators

(9 of 13)



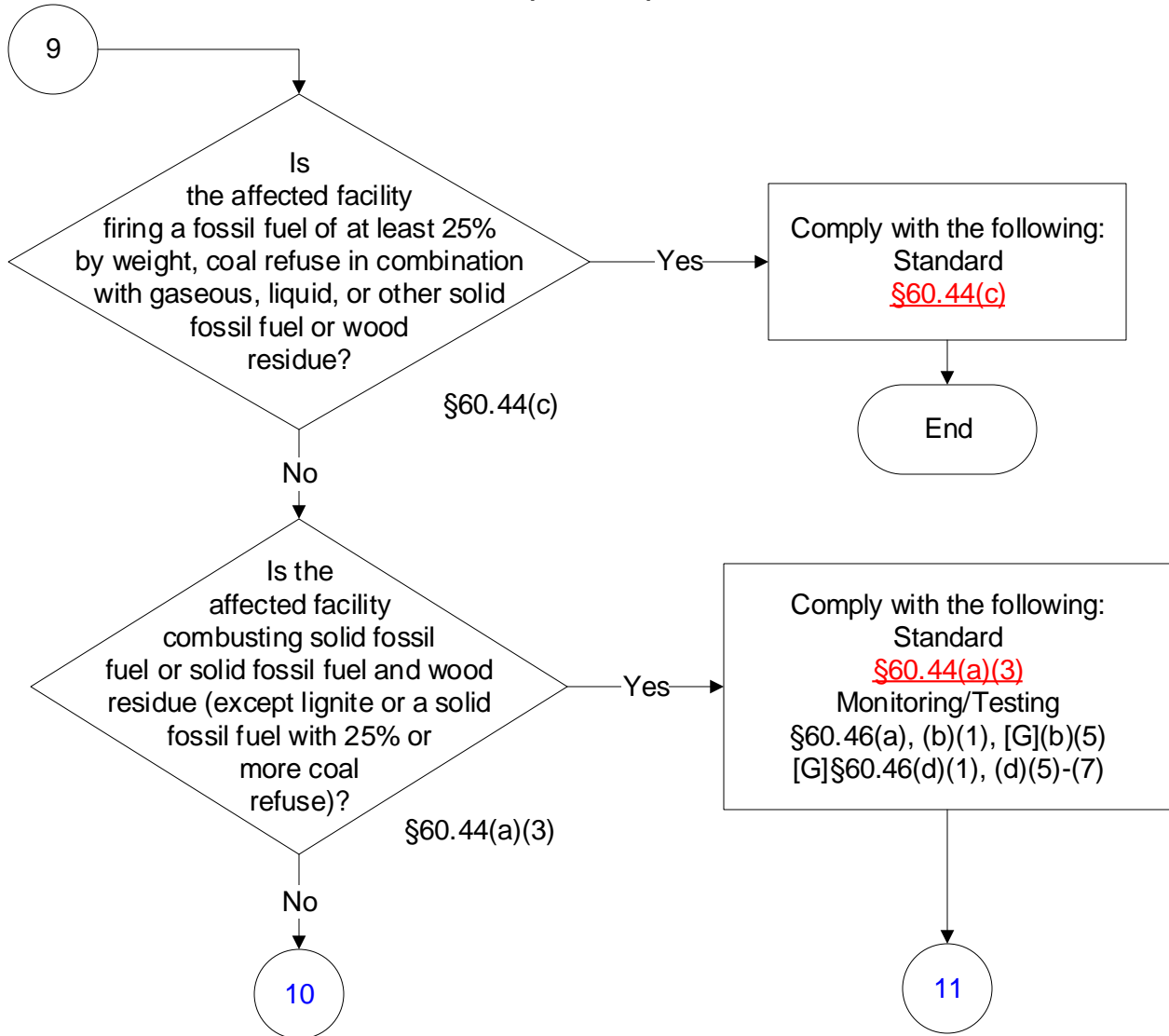
40 CFR Part 60, Subpart D-Standards of Performance for Fossil-Fuel-Fired Steam Generators

(10 of 13)

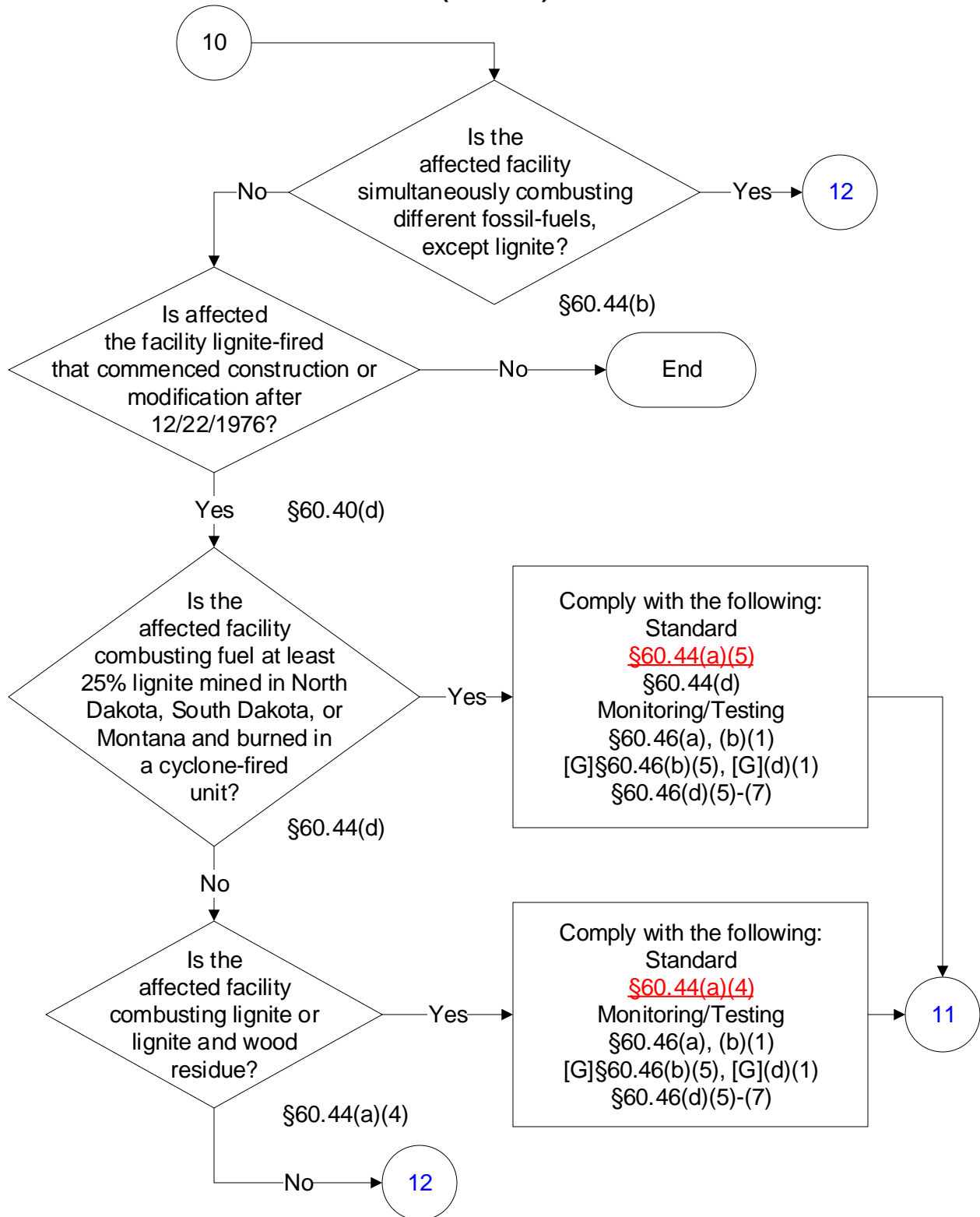


40 CFR Part 60, Subpart D-Standards of Performance for Fossil-Fuel-Fired Steam Generators

(11 of 13)



40 CFR Part 60, Subpart D-Standards of Performance for Fossil-Fuel-Fired Steam Generators (12 of 13)



40 CFR Part 60, Subpart D-Standards of Performance for Fossil-Fuel-Fired Steam Generators

(13 of 13)

