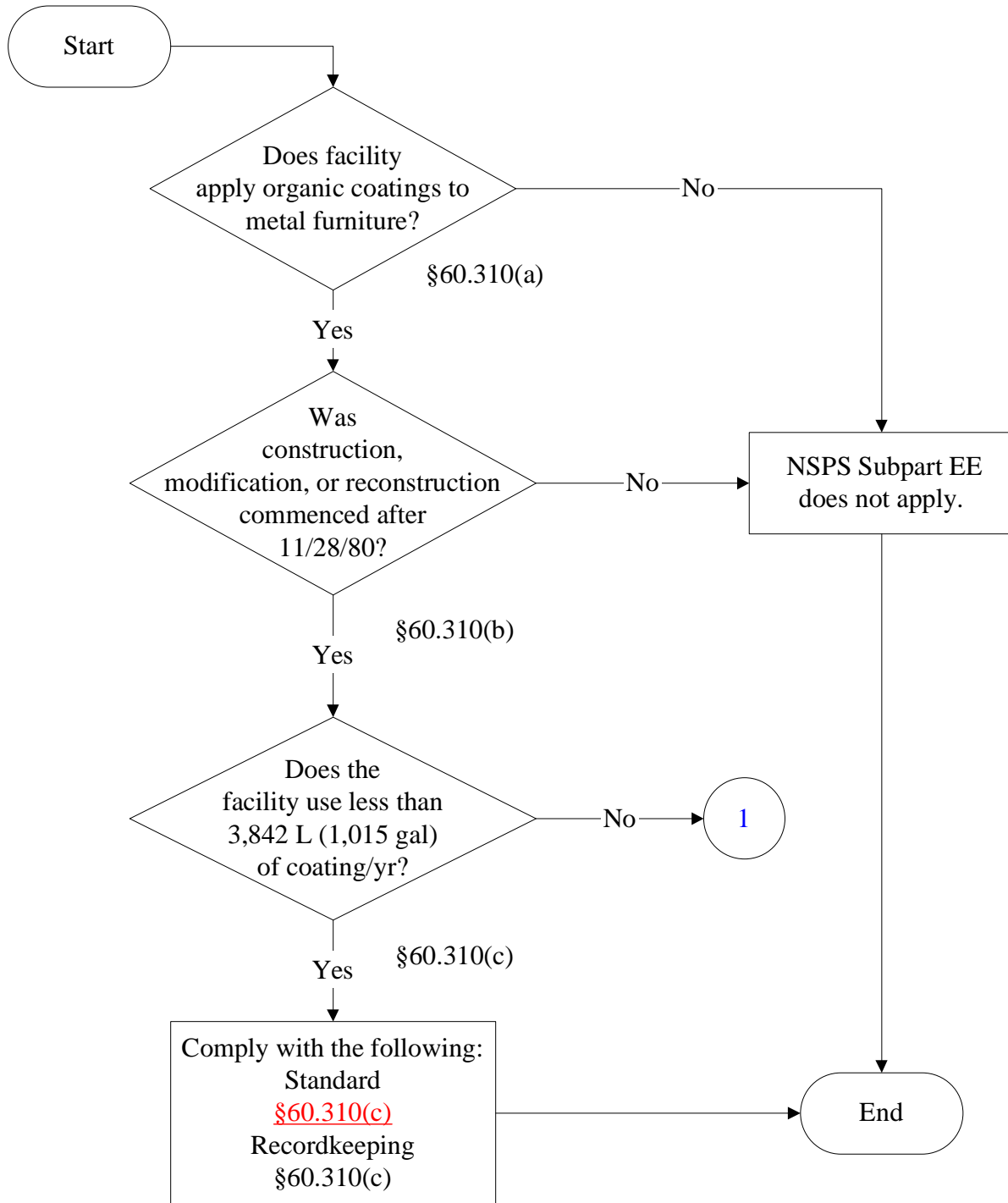




Below is a flowchart describing 40 CFR Part 60, Subpart EE.  
For the text of the statute/rule, please go to [40 CFR Part 60, Subpart EE](#)

(1 of 3)

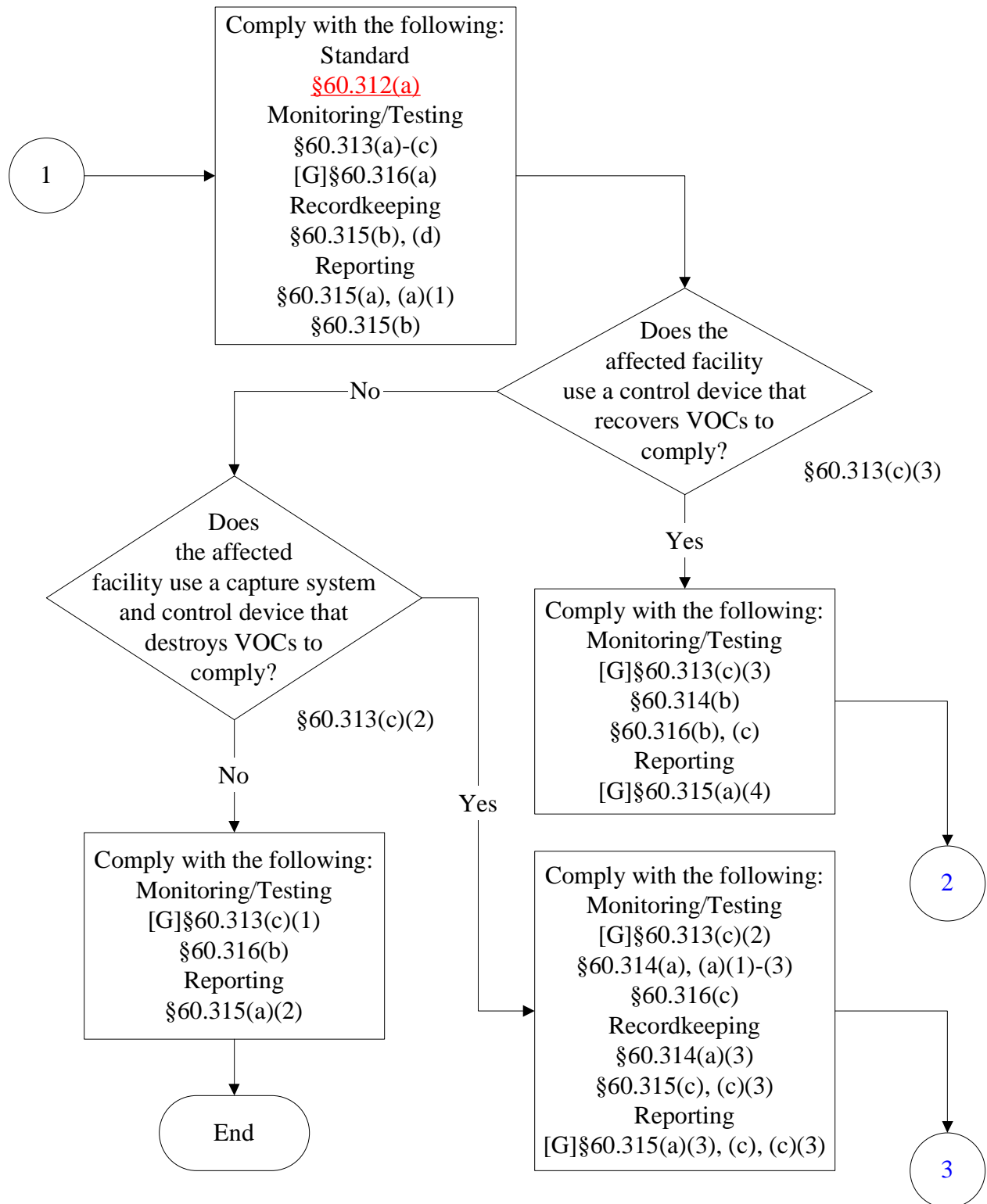


March 15, 1999

These flowcharts are for use by sources subject to the Texas Federal Operating Permits Program only and are subject to change.

# 40 CFR Part 60, Subpart EE

(2 of 3)

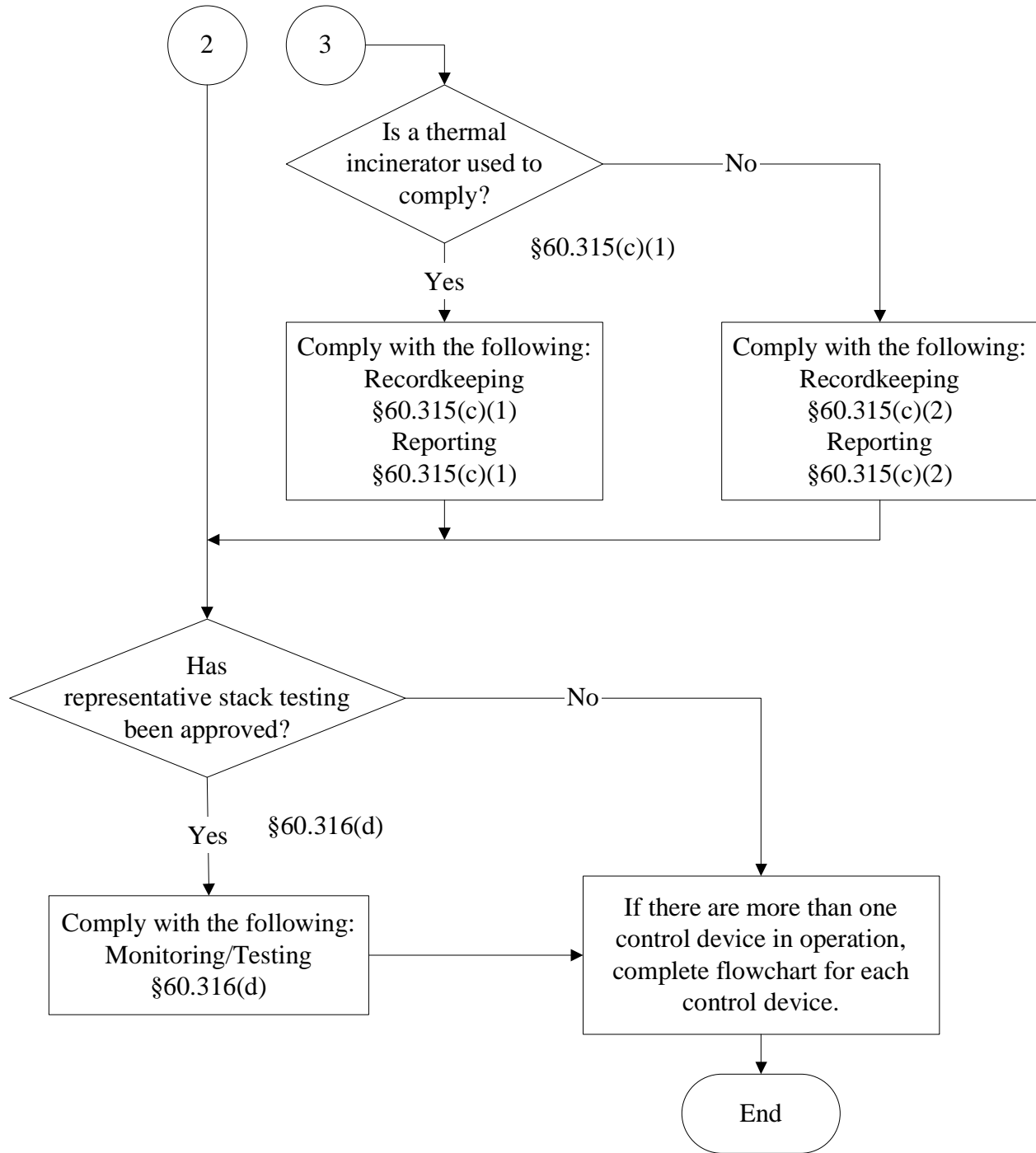


March 15, 1999

These flowcharts are for use by sources subject to the Texas Federal Operating Permits Program only and are subject to change.

# 40 CFR Part 60, Subpart EE

(3 of 3)



March 15, 1999

These flowcharts are for use by sources subject to the Texas Federal Operating Permits Program only and are subject to change.