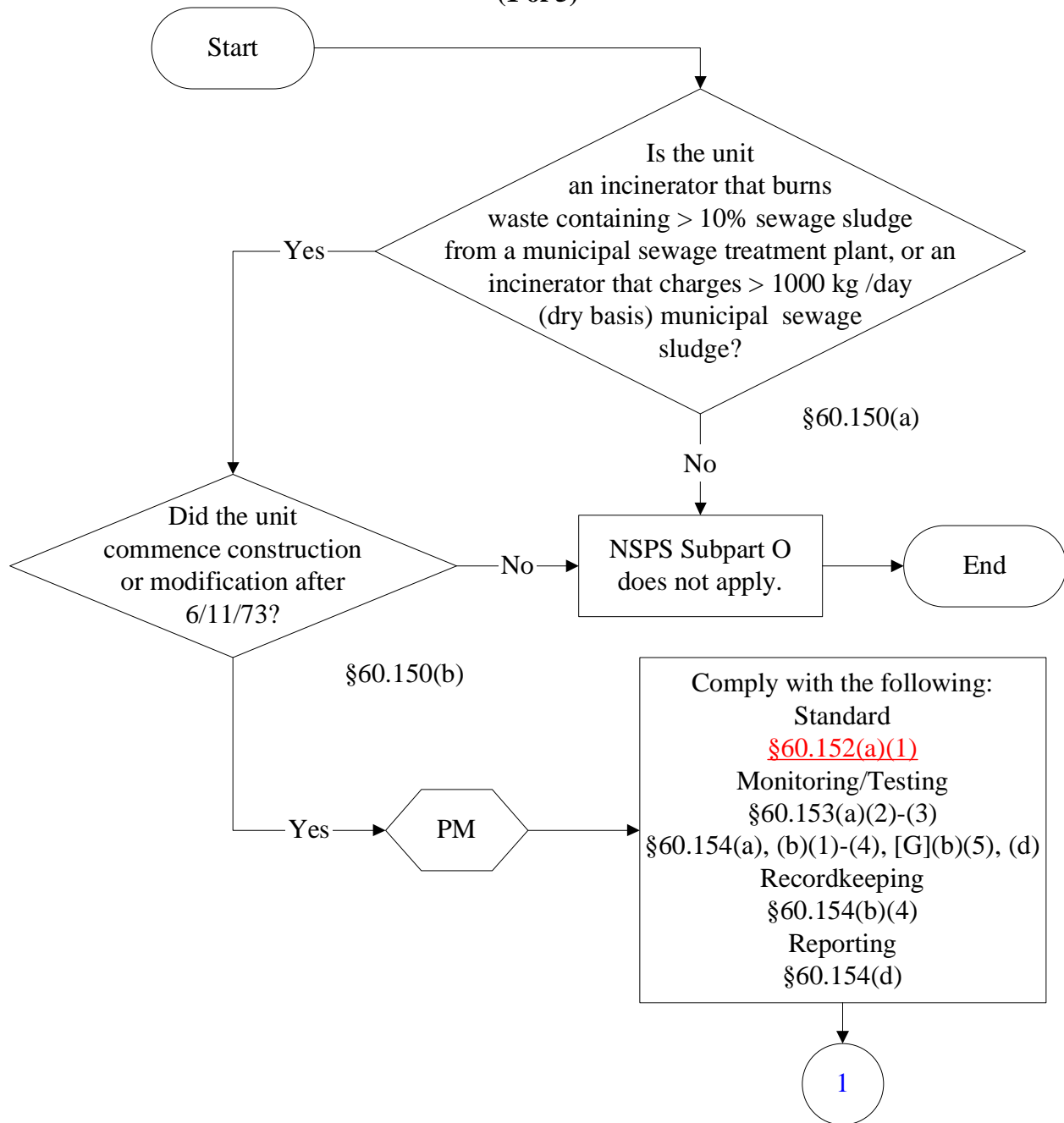




Below is a flowchart describing 40 CFR Part 60, Subpart O. It will likely not be accessible using a screen reader. For the text of the statute/rule, please go to

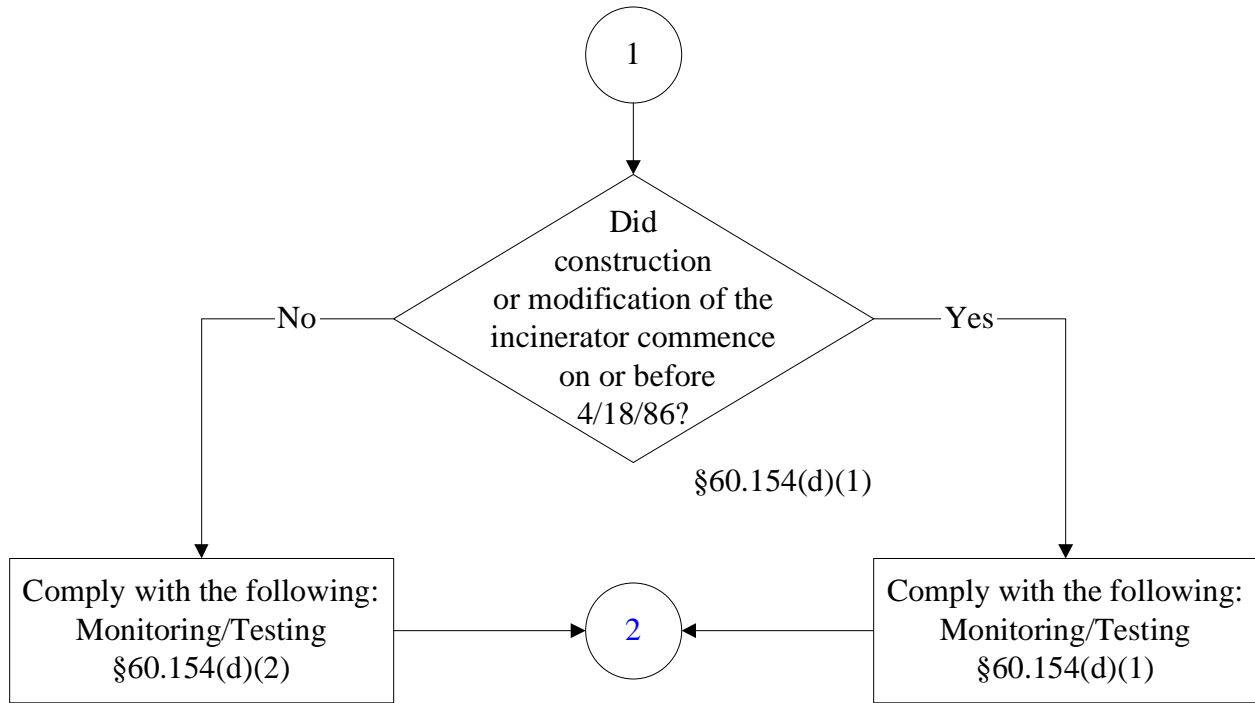
[40 CFR Part 60, Subpart O](#)

(1 of 5)



# 40 CFR Part 60, Subpart O

(2 of 5)

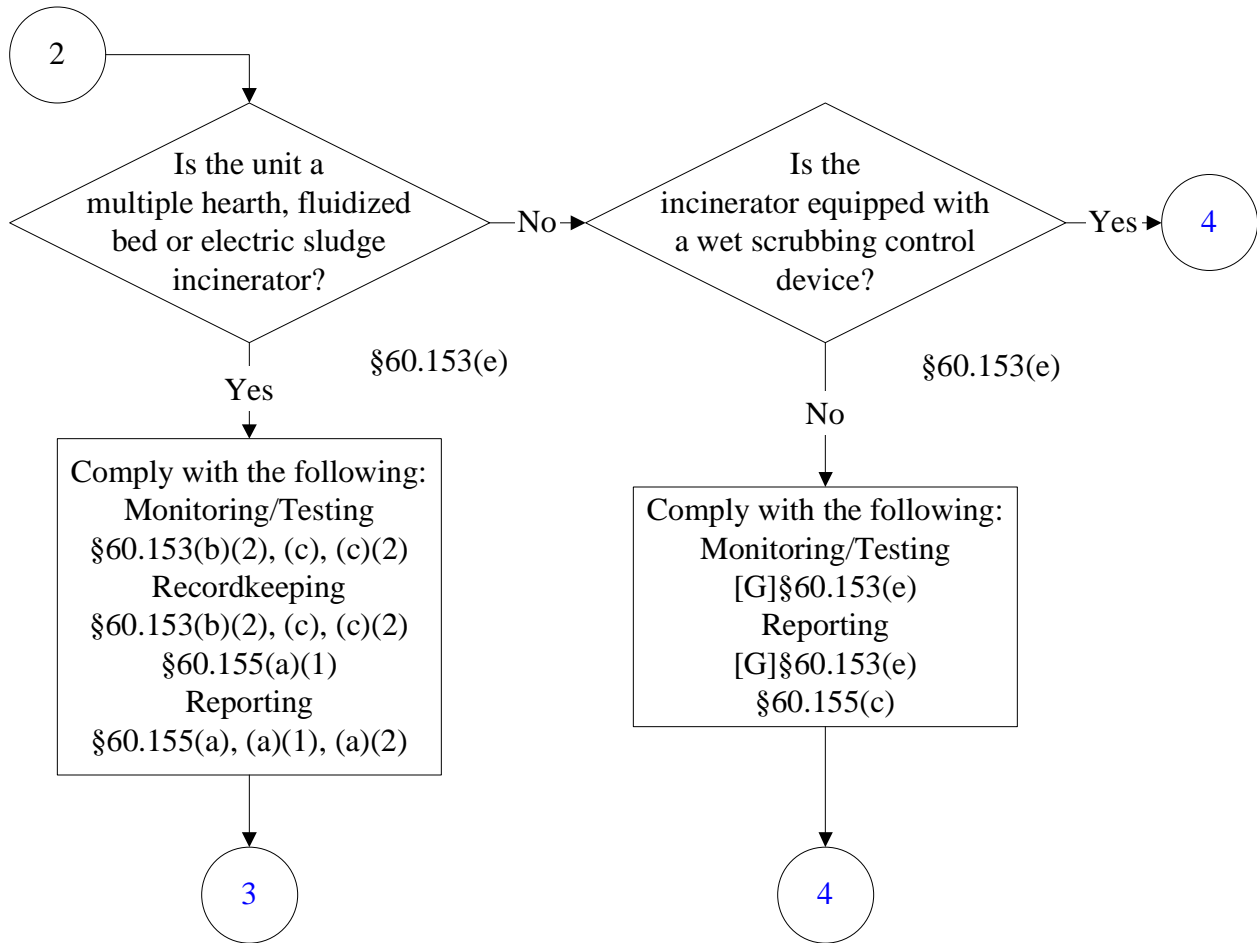


August 16, 1999

These flowcharts are for use by sources subject to the Texas Federal Operating Permits Program only and are subject to change.

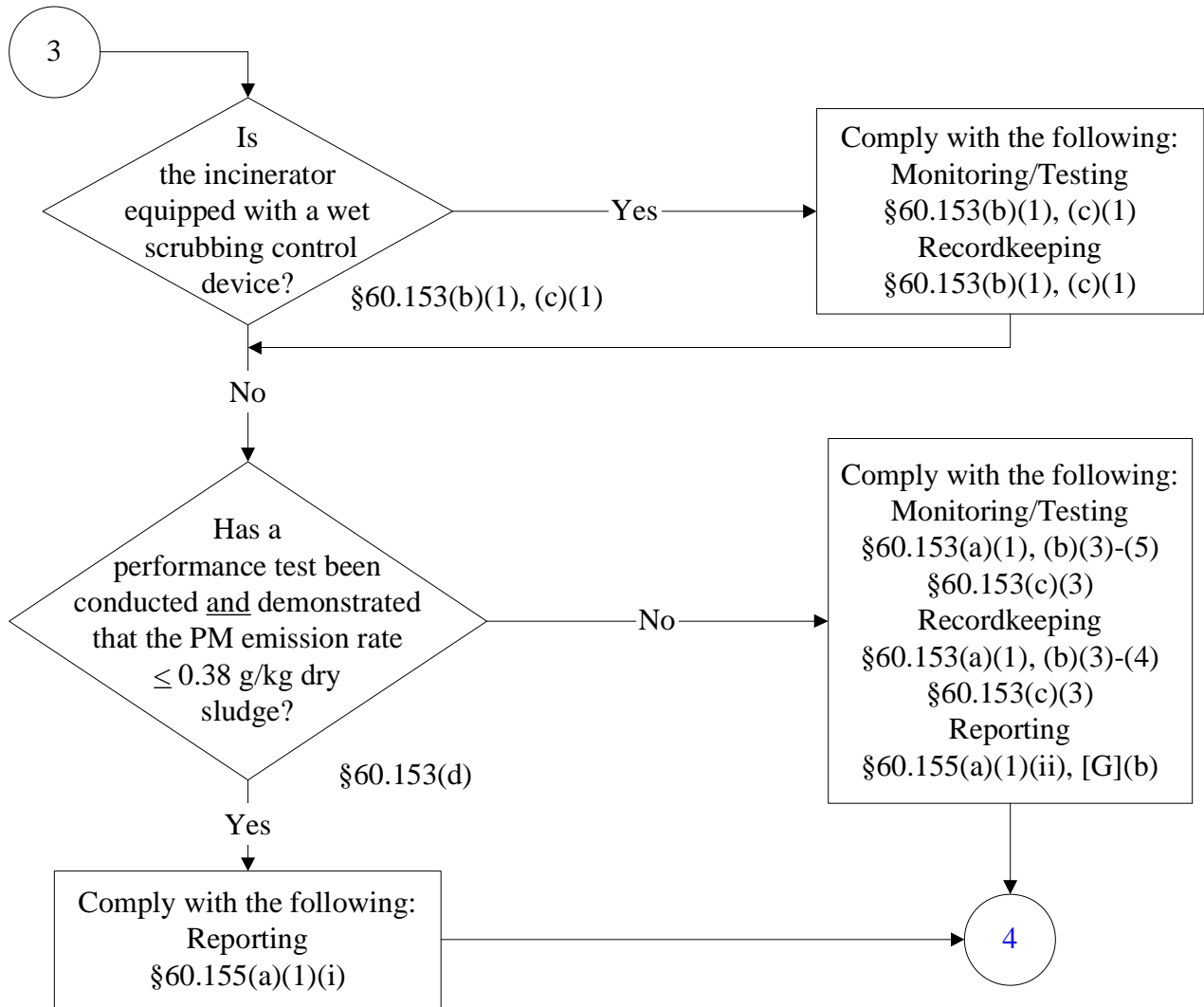
# 40 CFR Part 60, Subpart O

(3 of 5)



# 40 CFR Part 60, Subpart O

(4 of 5)



August 16, 1999

These flowcharts are for use by sources subject to the Texas Federal Operating Permits Program only and are subject to change.

# 40 CFR Part 60, Subpart O

(5 of 5)

