

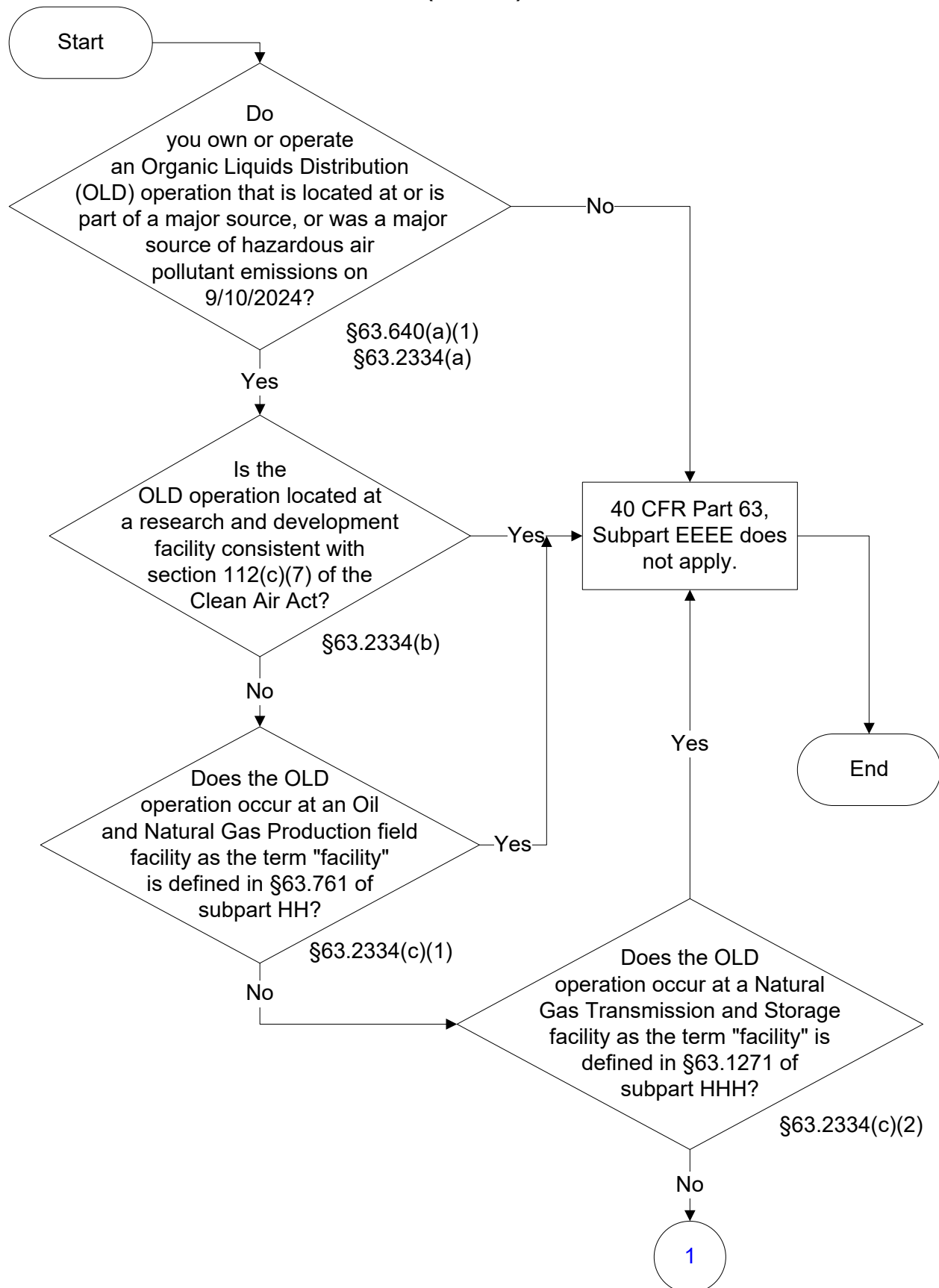


Below is a flowchart describing 40 CFR Part 63, Subpart EEEE

For the text of the statute/rule, please go to

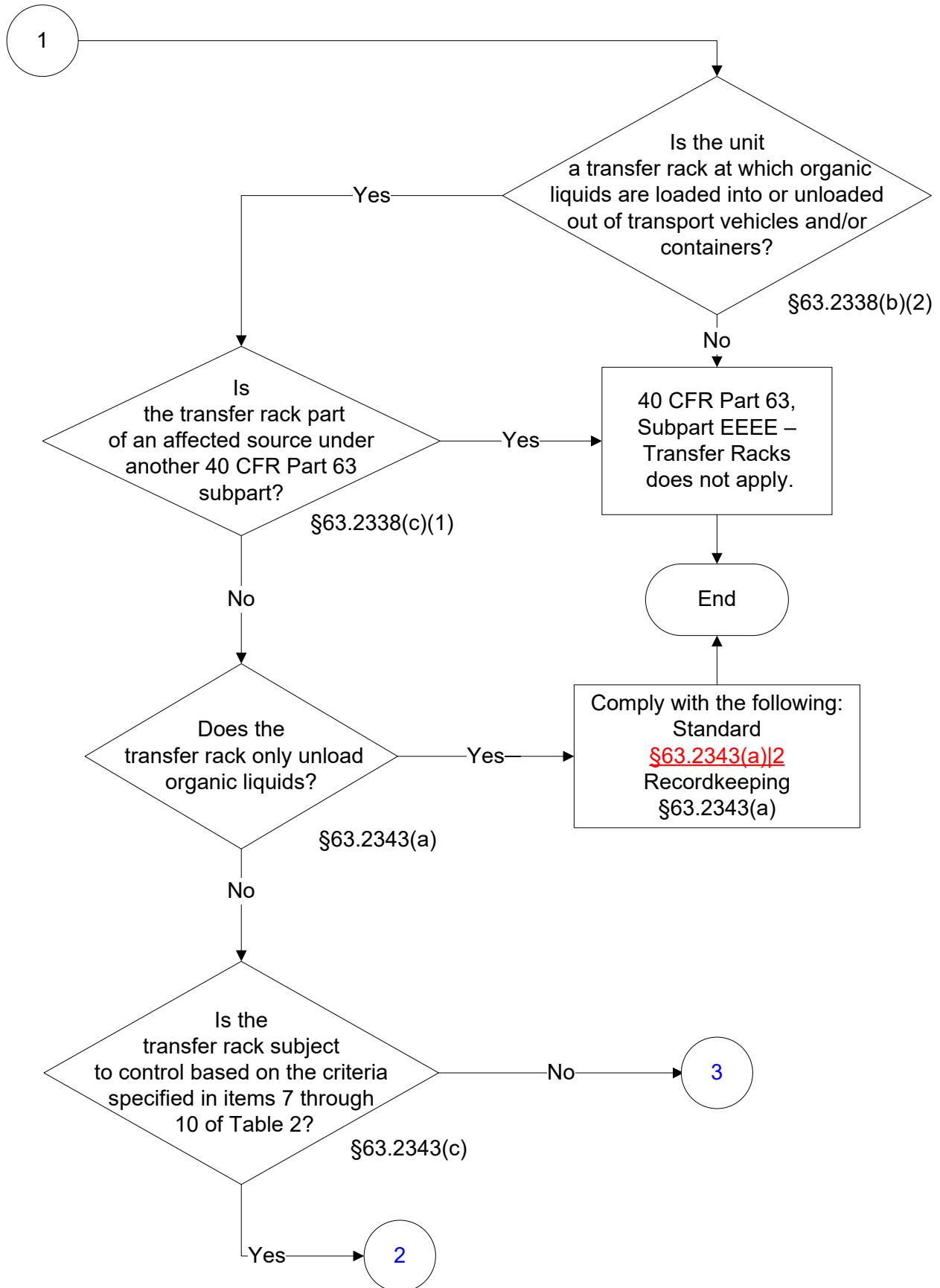
[40 CFR Part 63, Subpart EEEE – Transfer Racks](#)

(1 of 27)



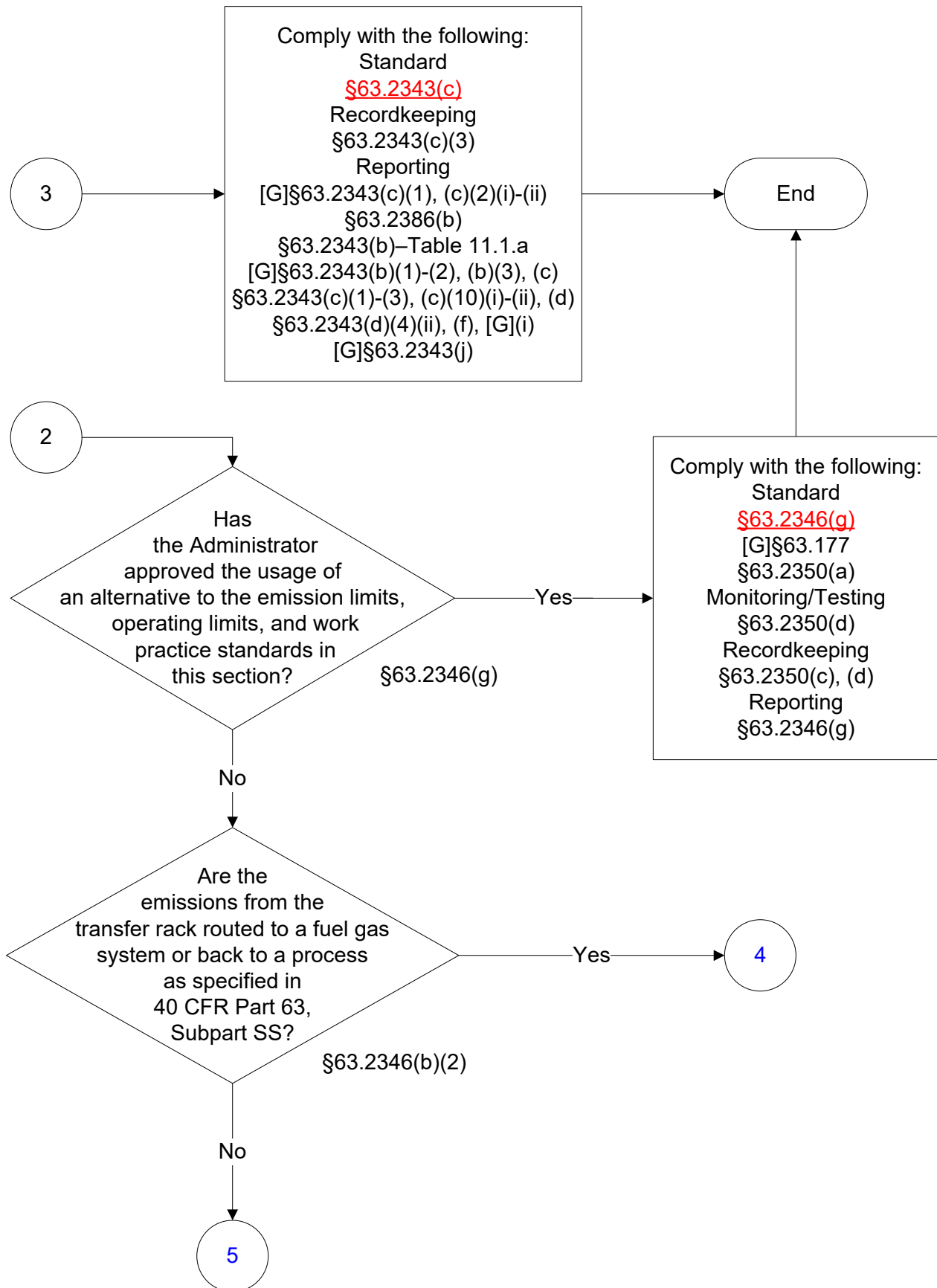
40 CFR Part 63, Subpart EEEE

(2 of 27)



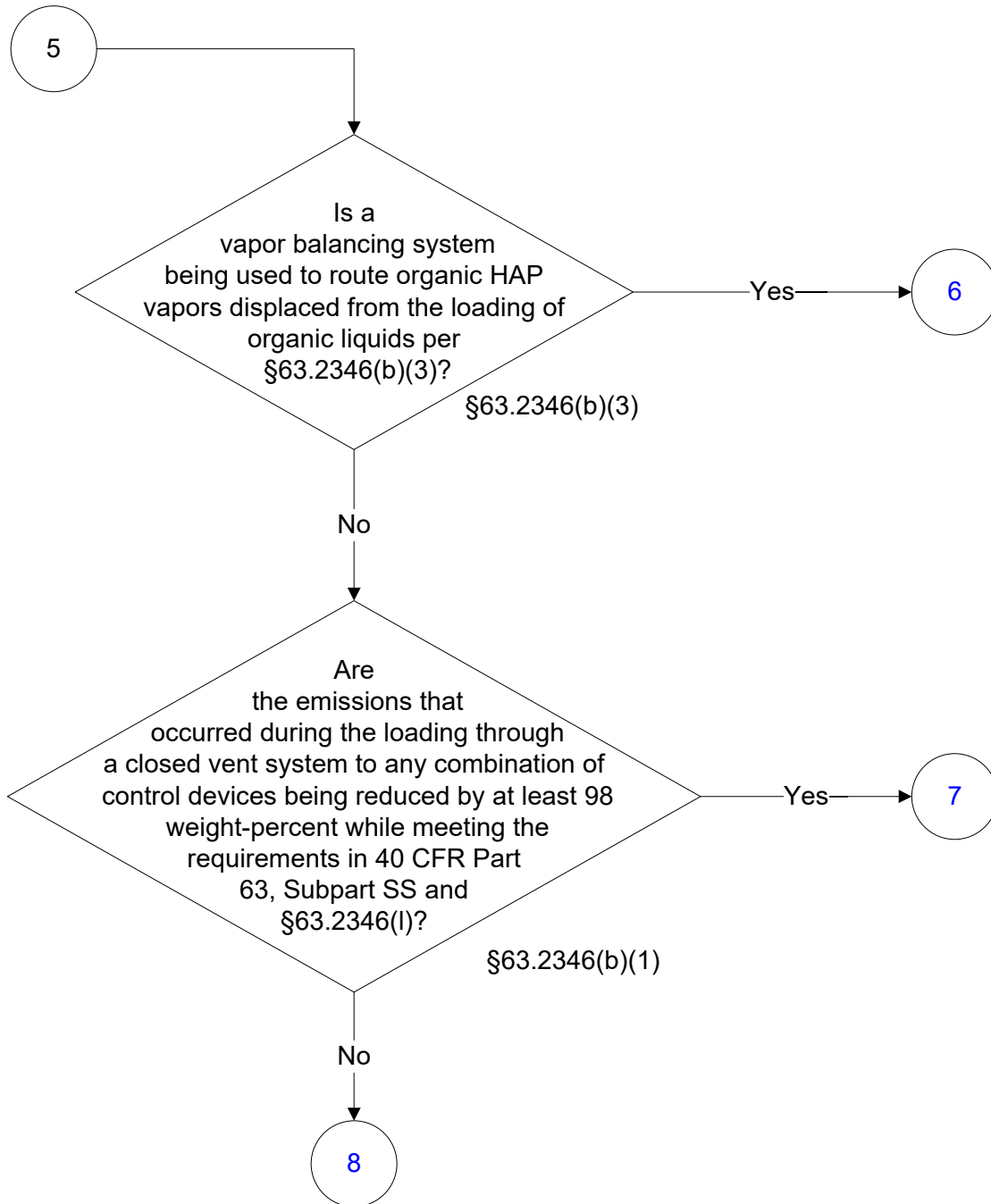
40 CFR Part 63, Subpart EEEE

(3 of 27)



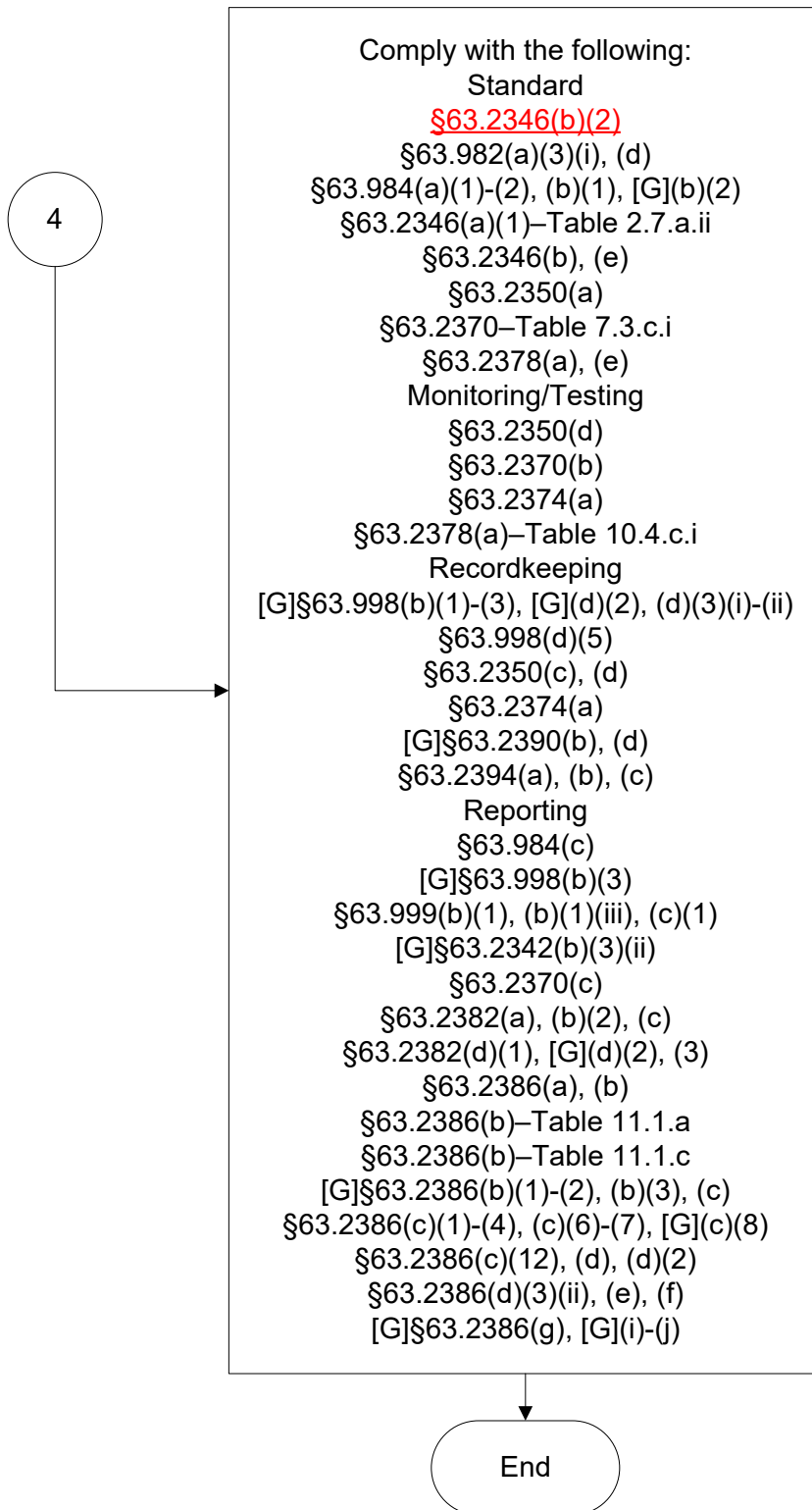
40 CFR Part 63, Subpart EEEE

(4 of 27)



40 CFR Part 63, Subpart EEEE

(5 of 27)



40 CFR Part 63, Subpart EEEE

(6 of 27)

6

Comply with the following:

Standard

§63.2346(b)(3)(i)

§63.2346(a)(1)–Table 2.7.a.ii

§63.2346(b), (b)(3)(ii)

§63.2350(a)

§63.2370(a)–Table 7.3.b.i

§63.2370(a)–Table 7.3.b.ii

§63.2378(a), (e)

Monitoring/Testing

§63.2350(d)

§63.2378(a)–Table 10.4.b.i

Recordkeeping

§63.2350(c), (d)

[G]§63.2390(b), (d)

§63.2394(a), (b), (c)

Reporting

[G]§63.2342(b)(3)(ii)

§63.2370(c)

§63.2382(a), (b)(2), (c)

§63.2382(d)(1), [G](d)(2), (3)

§63.2386(a), (b)

§63.2386(b)–Table 11.1.a

§63.2386(b)–Table 11.1.c

[G]§63.2386(b)(1)–(2), (b)(3), (c)

§63.2386(c)(1)–(4), (c)(6)–(7), [G](c)(8)

§63.2386(c)(12), (d), (d)(2)

§63.2386(d)(3)(ii), (e), (f)

§63.2386[G](g), [G](i)–(j)

End

40 CFR Part 63, Subpart EEEE

(7 of 27)

7

Comply with the following:

Standard

~~§63.2346(a)(1)–Table 2.7.a.i|1~~

§63.2346(b), (b)(1), (e)

§63.2350(a)

§63.2370(a)–Table 6.2

§63.2378(a)

§63.2378(a)–Table 8.2.a.i

§63.2378(a)–Table 8.2.a.ii

§63.2378(e), (e)(3)

§63.2396(e)(1)

Monitoring/Testing

§63.2350(d)

§63.2354(c)

§63.2358(a)

§63.2366(a)

§63.2370(b)

§63.2374(a), (b)

Recordkeeping

[G]§63.998(b)(1)–(3), [G](d)(2), (d)(3)(i)–(ii)

§63.998(d)(5)

§63.2350(c), (d)

§63.2366(a), (c)

§63.2374(a), (b), (c)

[G]§63.2390(b), (d)

§63.2394(a), (b), (c)

Reporting

[G]§63.998(b)(3)

§63.999(c)(1)

[G]§63.2342(b)(3)(ii)

§63.2370(c)

§63.2382(a), (b)(2), (c)

§63.2382(d)(1), [G](d)(2), (d)(3)

§63.2386(a), (b)

§63.2386(b)–Table 11.1.a

§63.2386(b)–Table 11.1.c

§63.2386(b)–Table 11.2.a.i

[G]§63.2386(b)(1)–(2), (b)(3), (c)

§63.2386(c)(1)–(4), (c)(6)–(7), [G](c)(8)

§63.2386(c)(12), (d), [G](d)(1)

§63.2386(d)(2), (d)(3)(ii), (e)–(f)

[G]§63.2386(g), [G](i)–(j)

§63.2396(e)(1)

9

40 CFR Part 63, Subpart EEEE

(8 of 27)

8

Comply with the following:

Standard

~~§63.2346(a)(1)–Table 2.7.a.i~~2

§63.2346(b), (b)(1), (e)

§63.2350(a)

§63.2370(a)–Table 6.2

§63.2378(a)

§63.2378(a)–Table 8.2.a.i

§63.2378(a)–Table 8.2.a.ii

§63.2378(e), (e)(3)

§63.2396(e)(1)

Monitoring/Testing

§63.2350(d)

§63.2354(c)

§63.2358(a)

§63.2366(a)

§63.2370(b)

§63.2374(a), (b)

Recordkeeping

[G]§63.998(b)(1)–(3), [G](d)(2), (d)(3)(i)–(ii)

§63.998(d)(5)

§63.2350(c), (d)

§63.2366(a), (c)

§63.2374(a), (b), (c)

[G]§63.2390(b), (d)

§63.2394(a), (b), (c)

Reporting

[G]§63.998(b)(3)

§63.999(c)(1)

[G]§63.2342(b)(3)(ii)

§63.2370(c)

§63.2382(a), (b)(2), (c)

§63.2382(d)(1), [G](d)(2), (3)

§63.2386(a), (b)

§63.2386(b)–Table 11.1.a

§63.2386(b)–Table 11.1.c

§63.2386(b)–Table 11.2.a.i

[G]§63.2386(b)(1)–(2), (b)(3), (c)

§63.2386(c)(1)–(4), (c)(6)–(7), [G](c)(8)

§63.2386(c)(12), (d), [G](d)(1)

§63.2386(d)(2), (d)(3)(ii), (e)–(f)

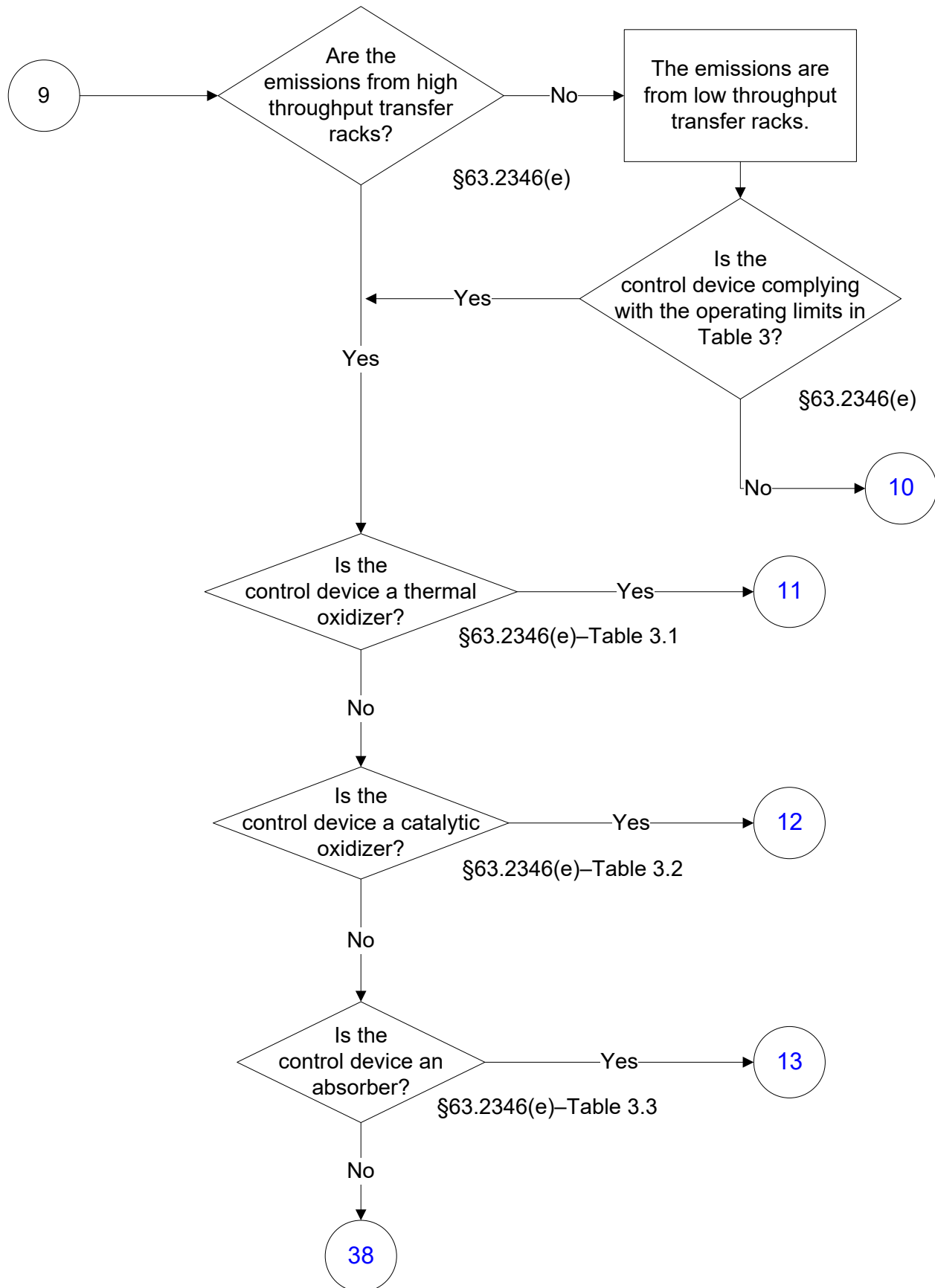
[G]§63.2386(g), [G](i)–(j)

§63.2396(e)(1)

9

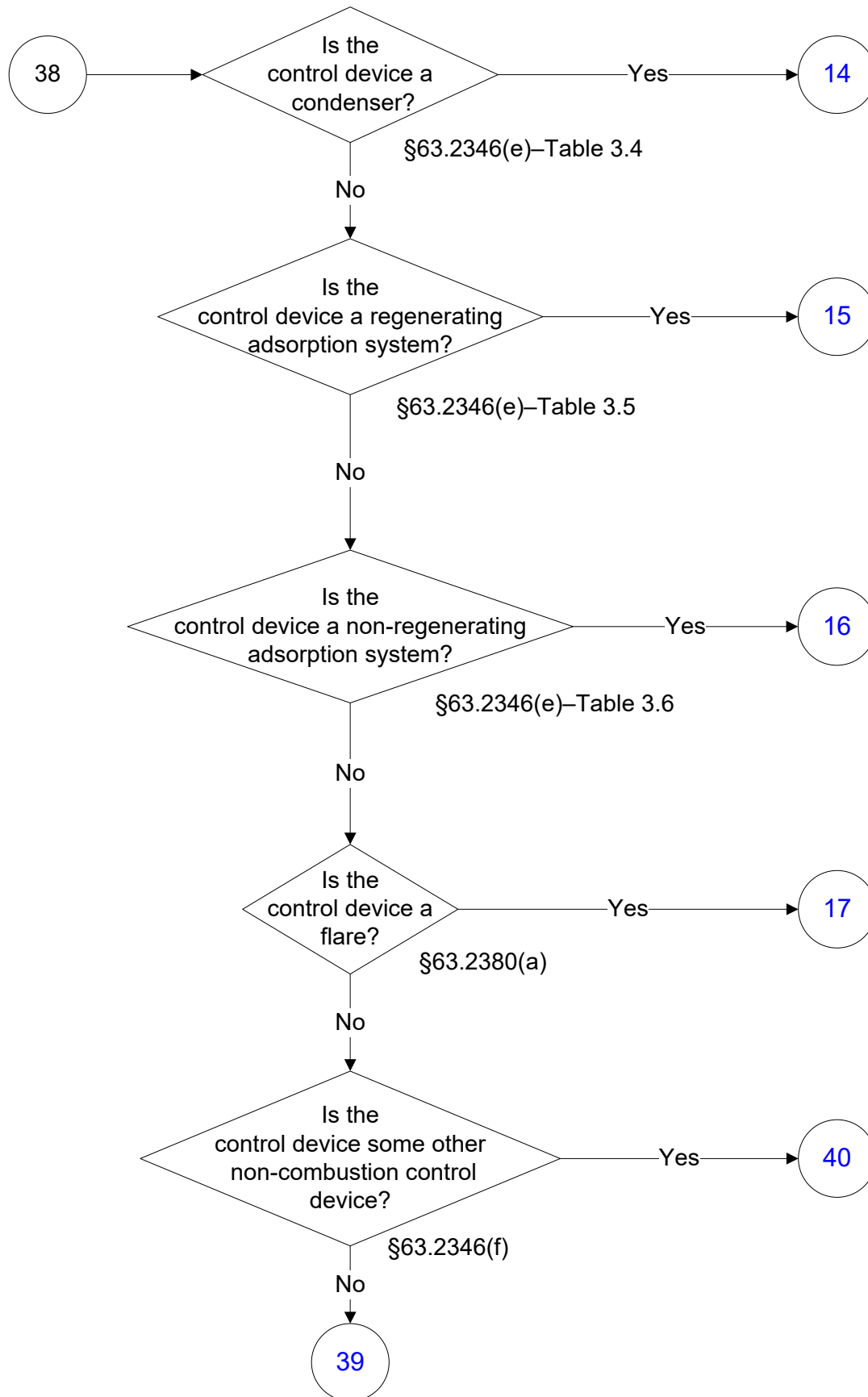
40 CFR Part 63, Subpart EEEE

(9 of 27)



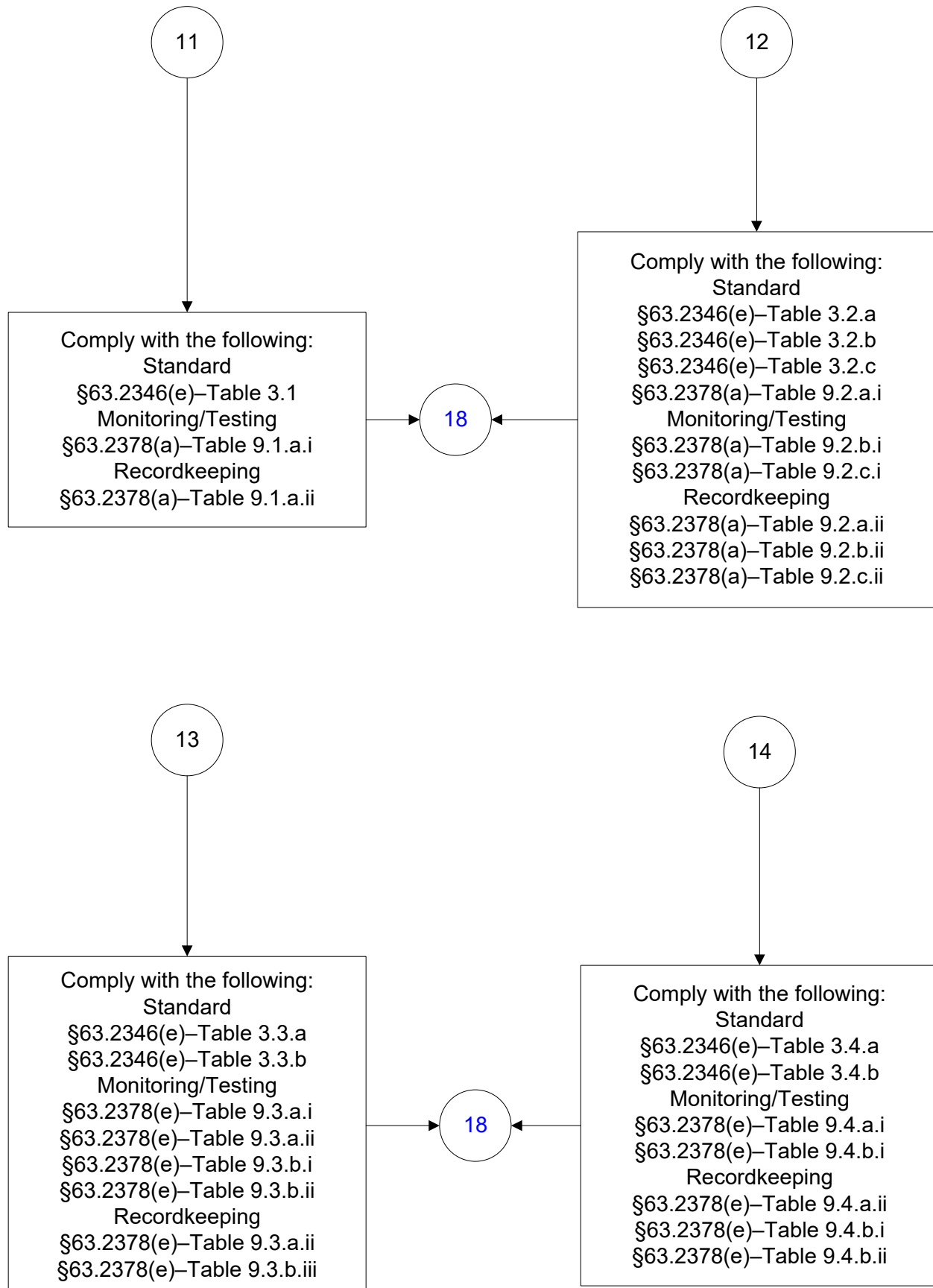
40 CFR Part 63, Subpart EEEE

(10 of 27)



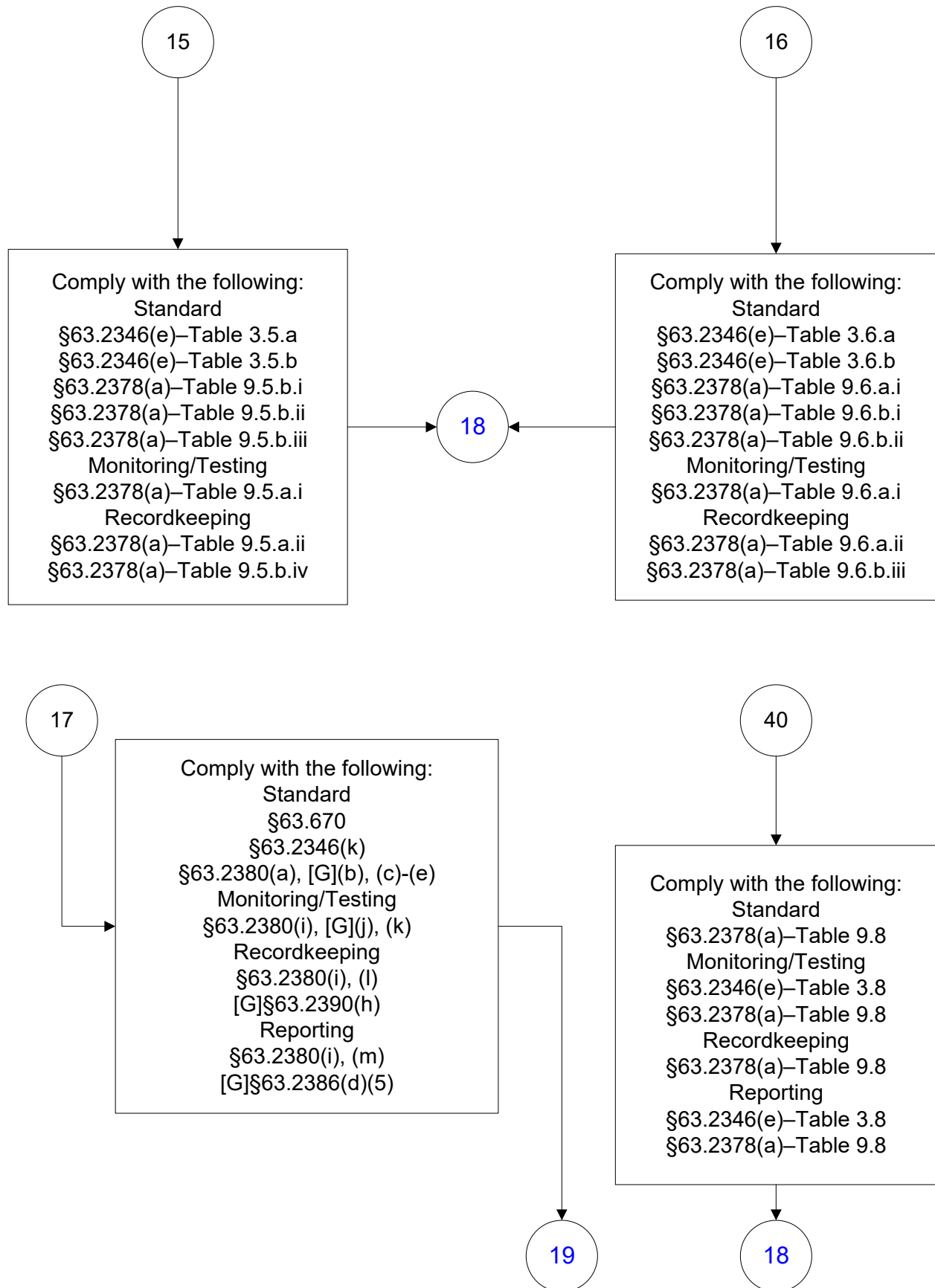
40 CFR Part 63, Subpart EEEE

(11 of 27)



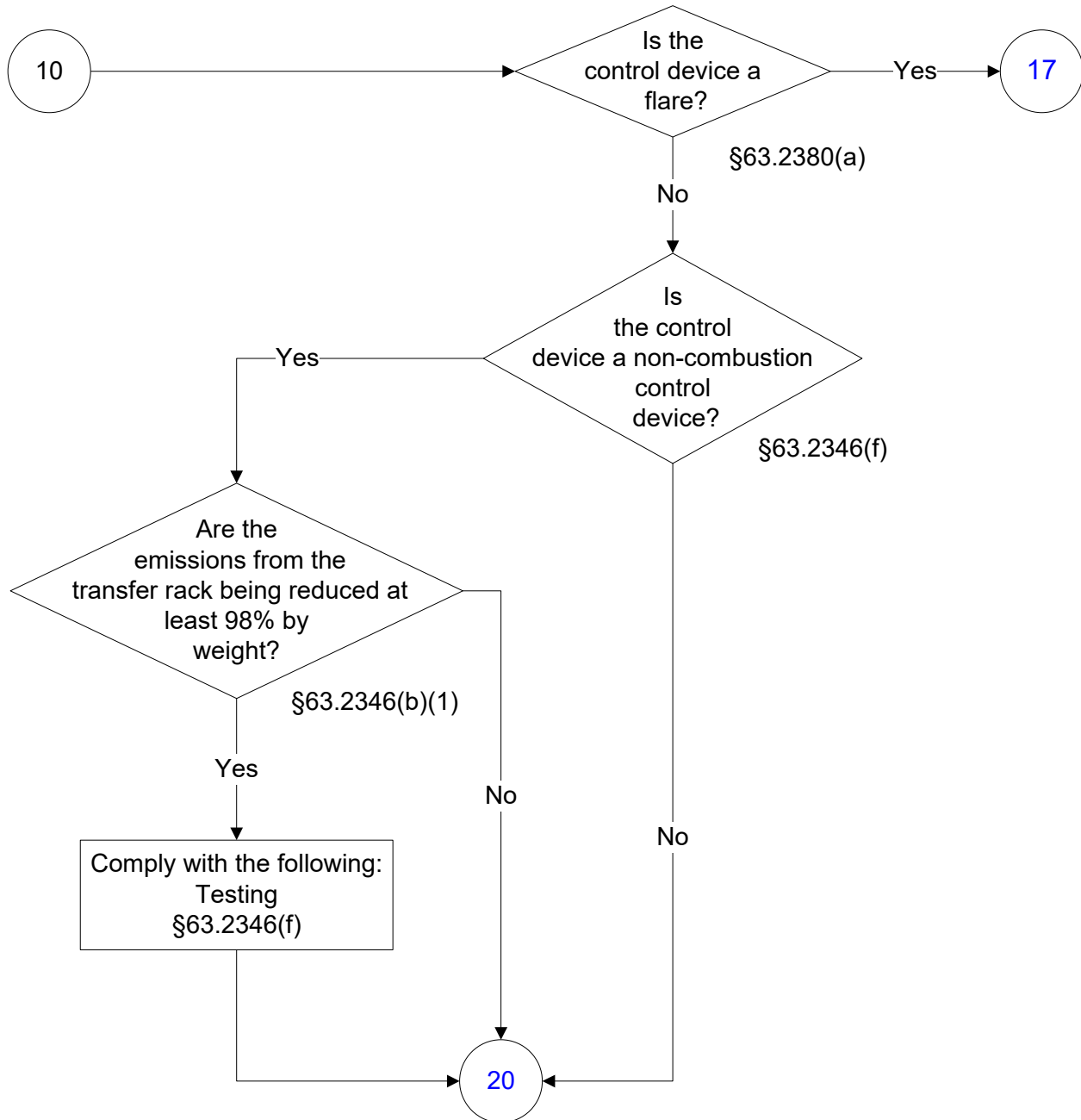
40 CFR Part 63, Subpart EEEE

(12 of 27)



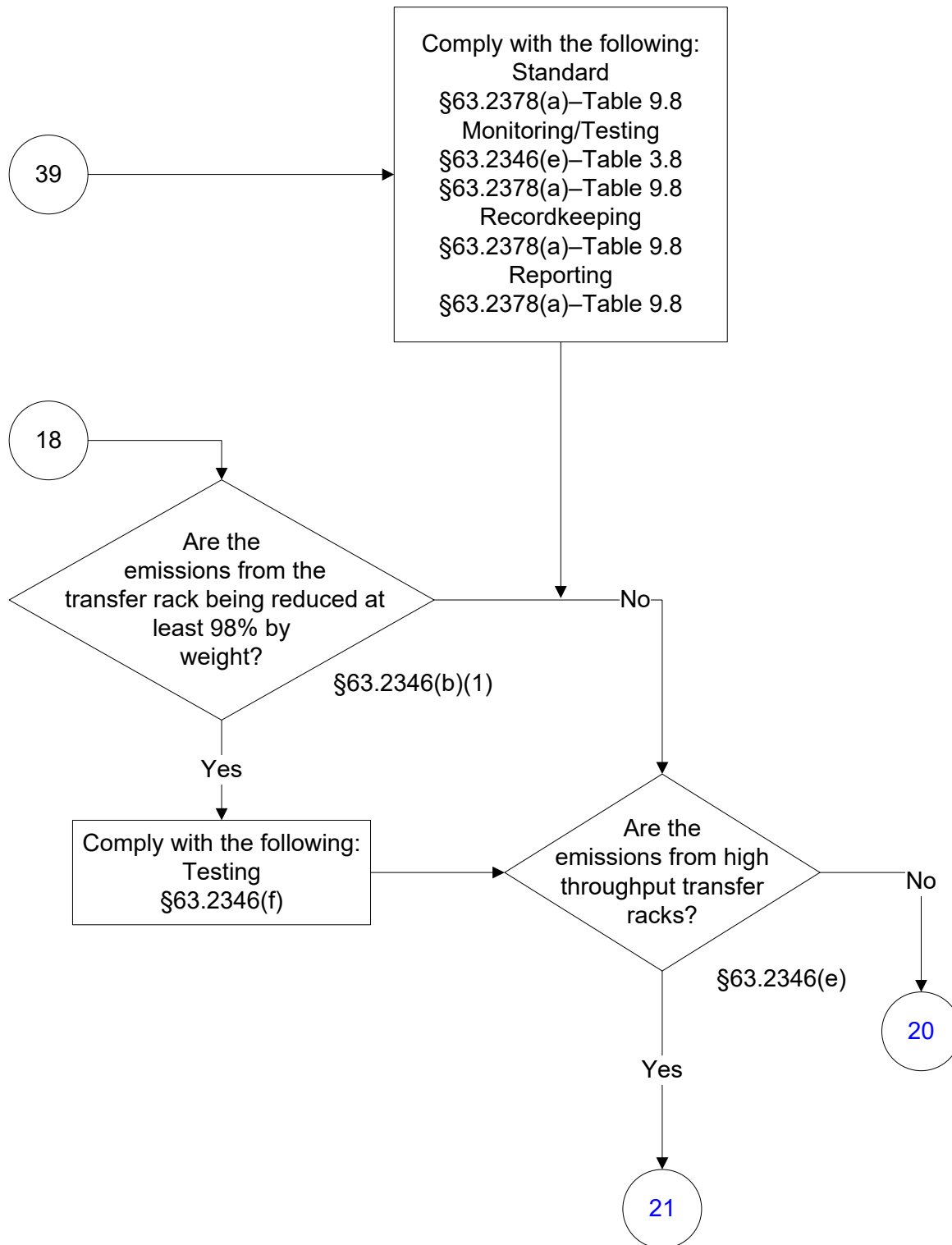
40 CFR Part 63, Subpart EEEE

(13 of 27)



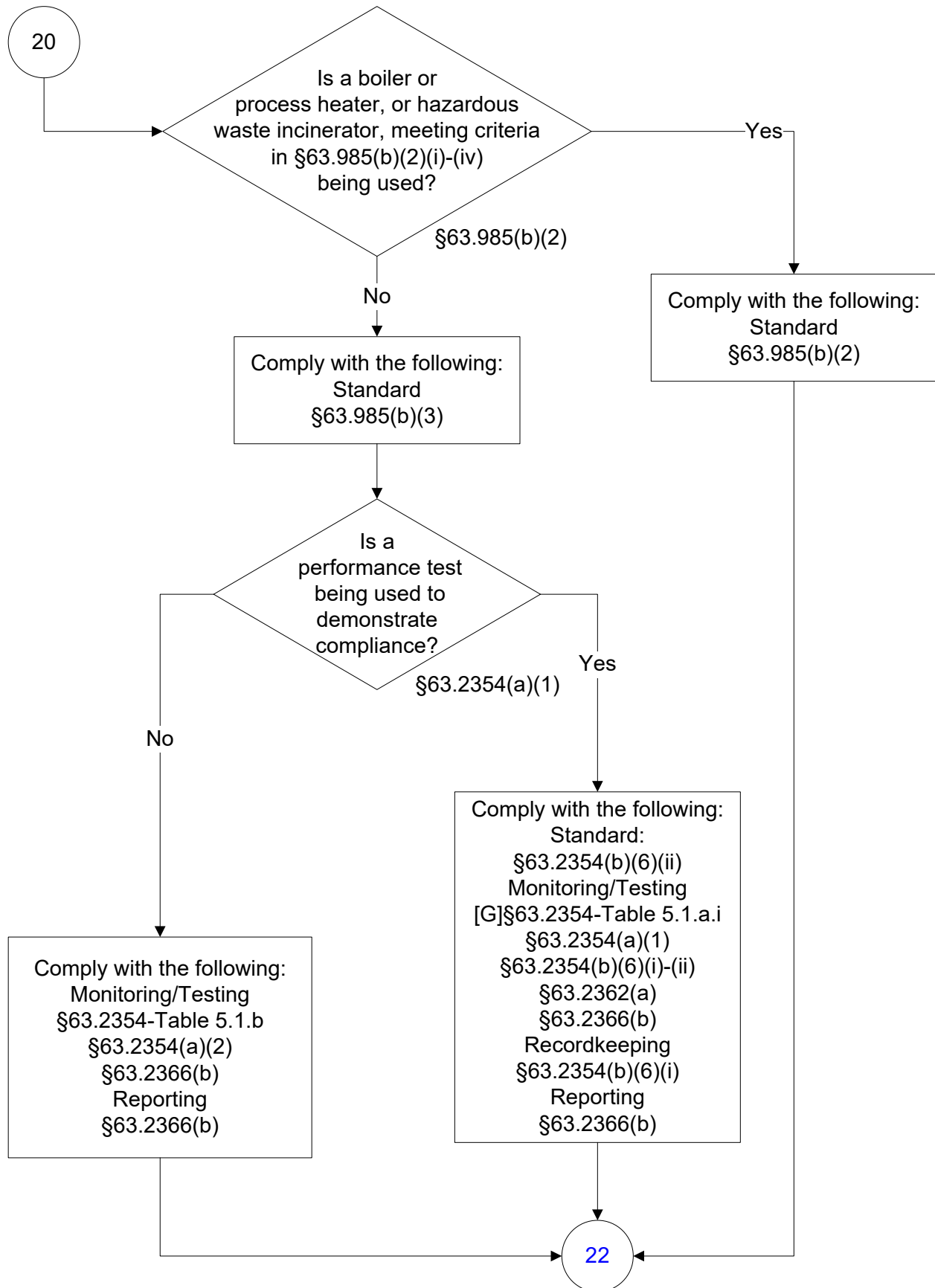
40 CFR Part 63, Subpart EEEE

(14 of 27)



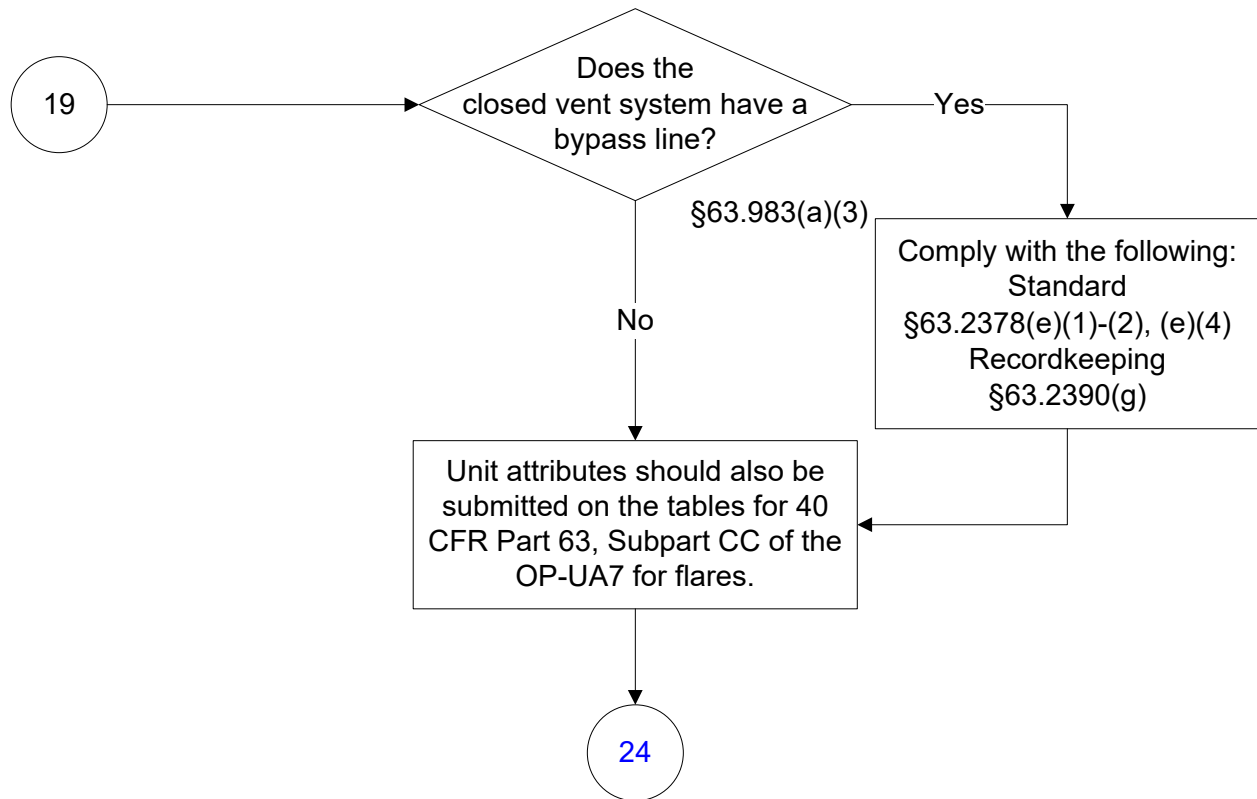
40 CFR Part 63, Subpart EEEE

(15 of 27)



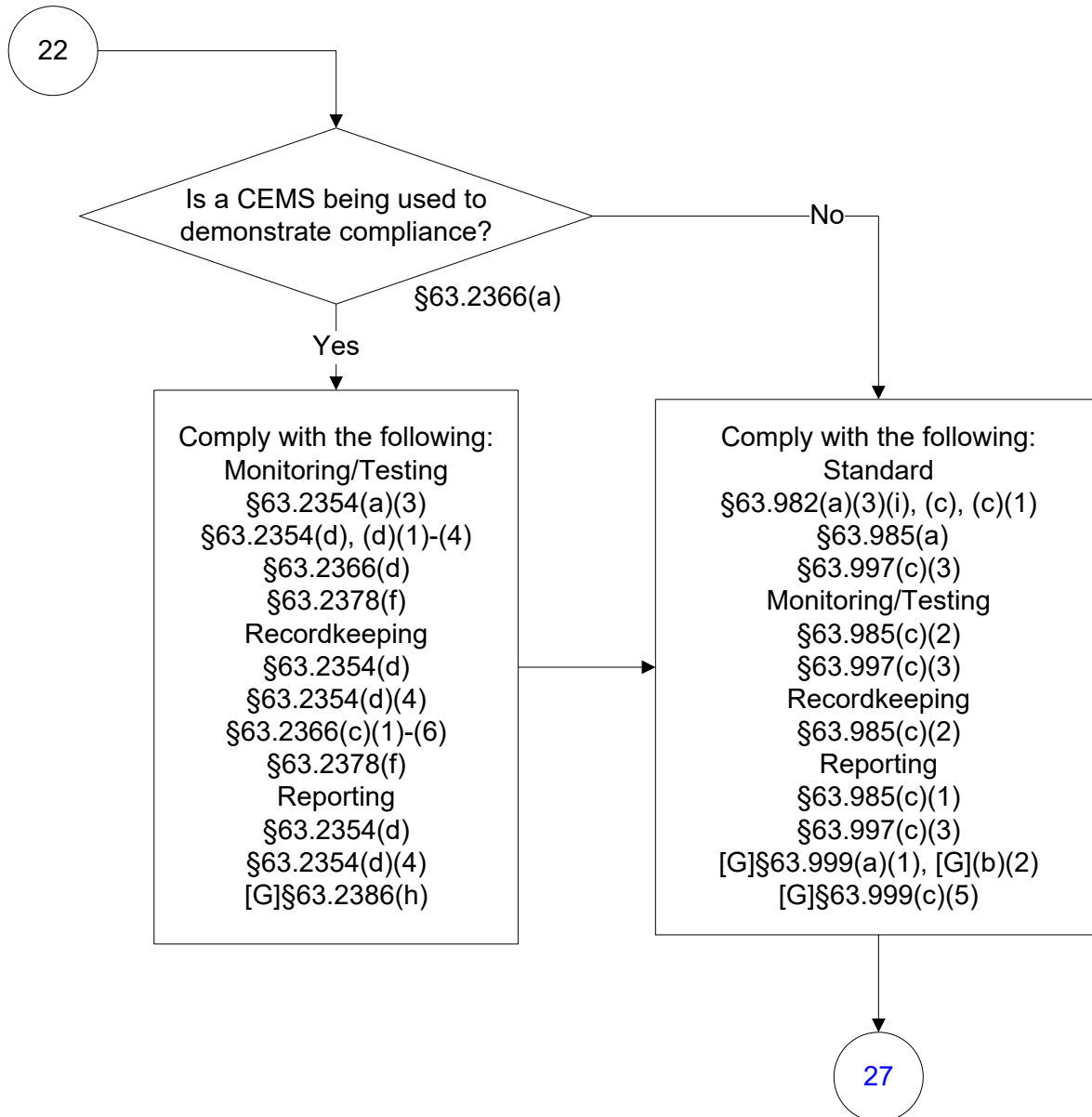
40 CFR Part 63, Subpart EEEE

(16 of 27)



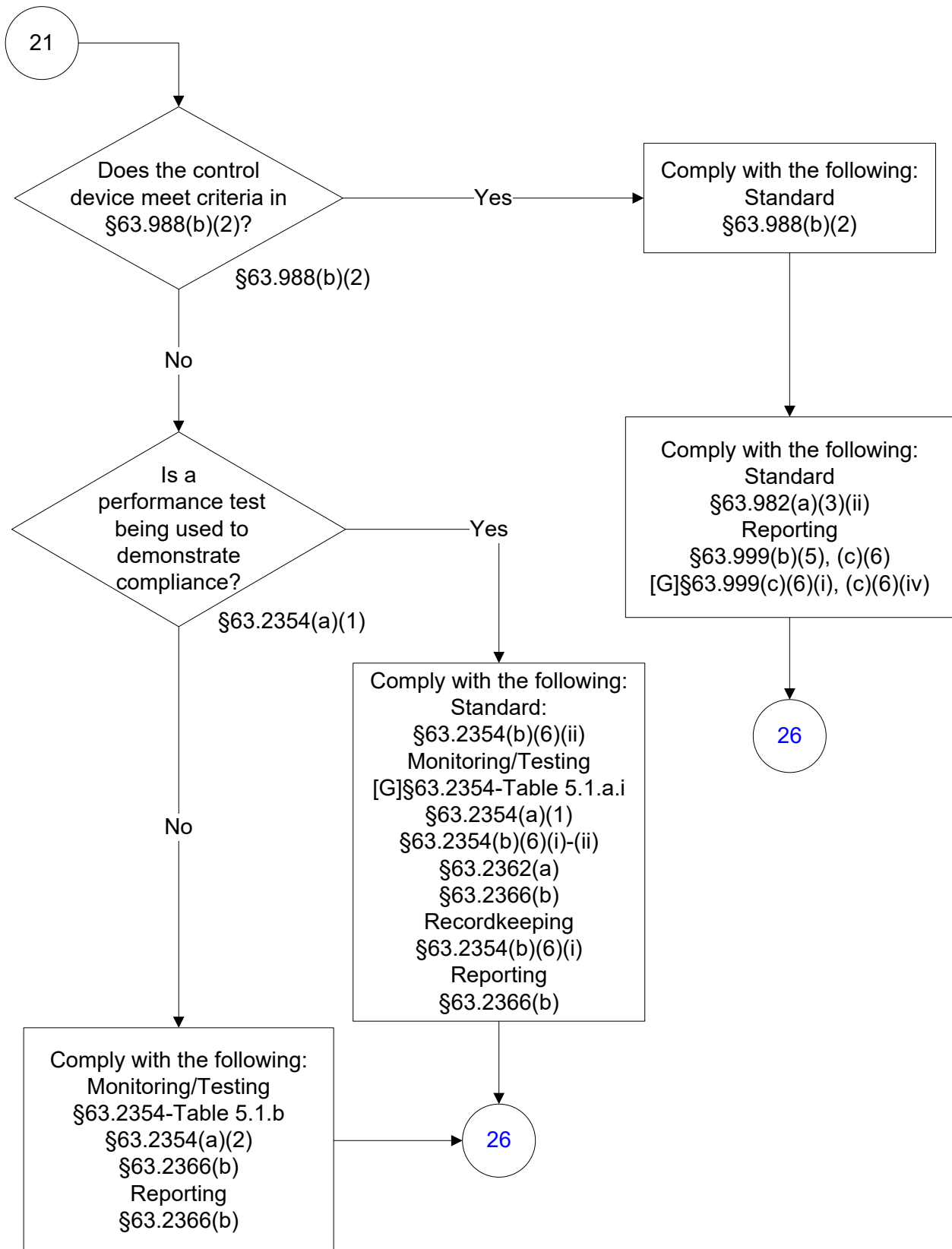
40 CFR Part 63, Subpart EEEE

(17 of 27)



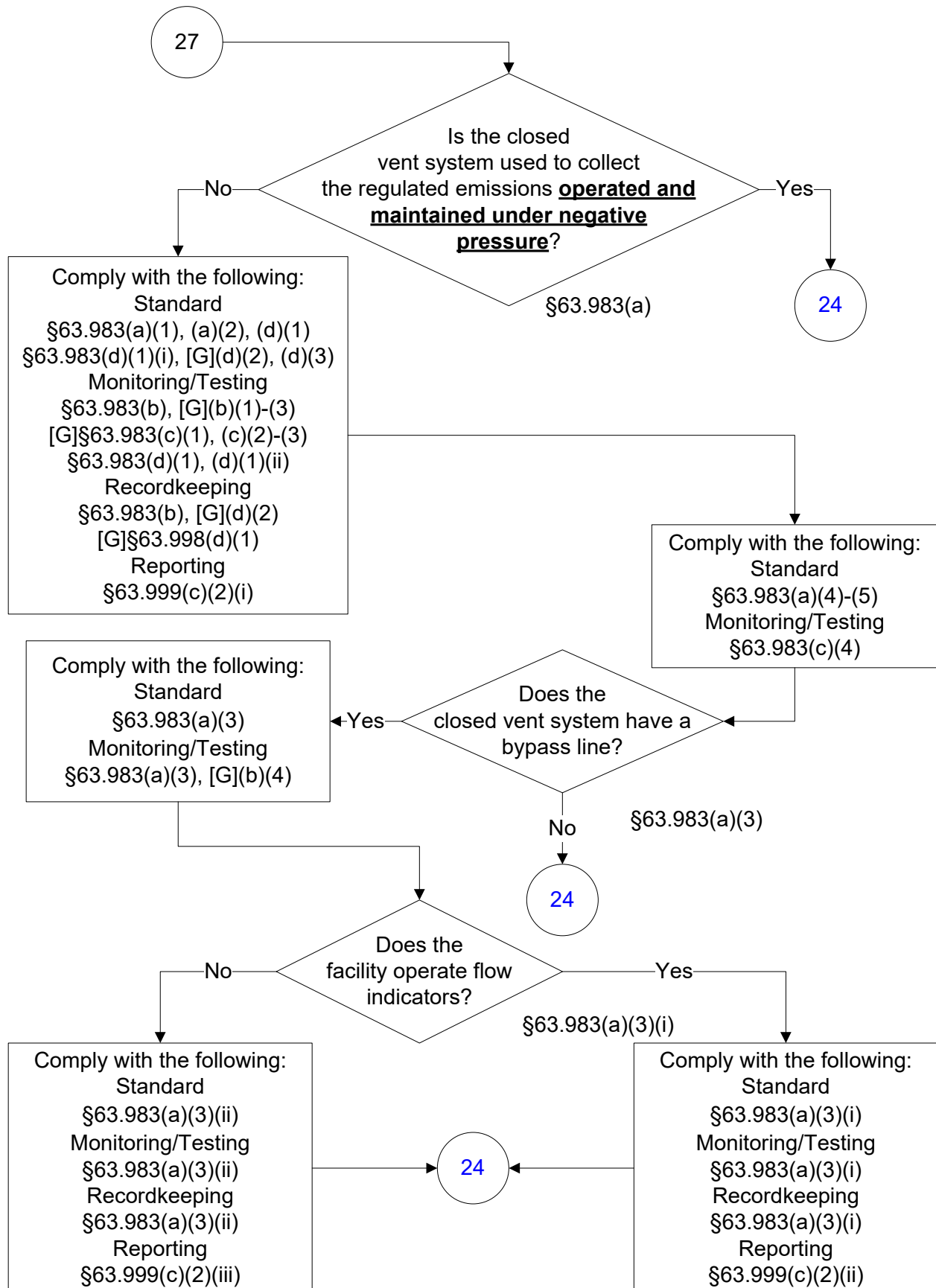
40 CFR Part 63, Subpart EEEE

(18 of 27)



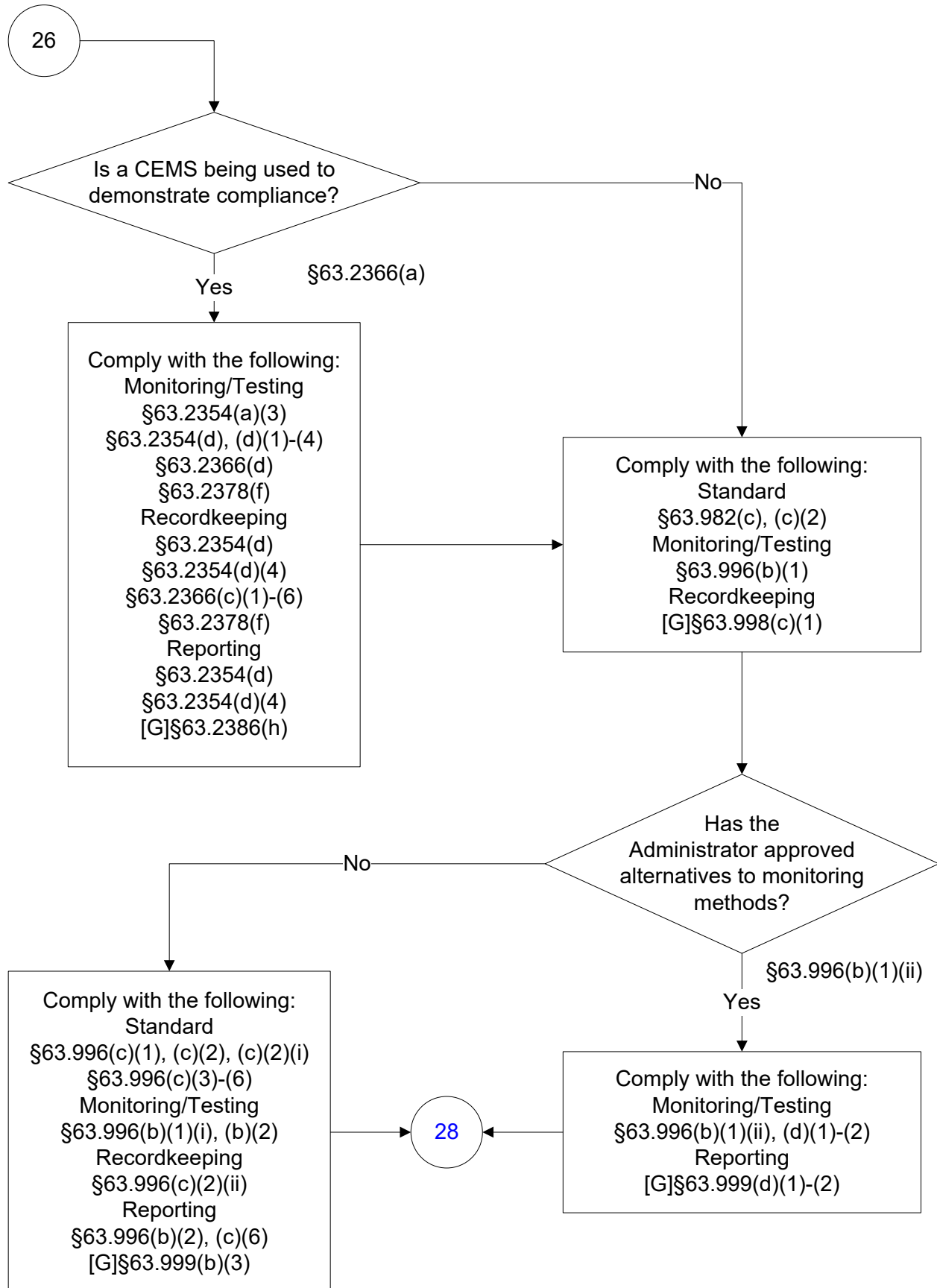
40 CFR Part 63, Subpart EEEE

(19 of 27)



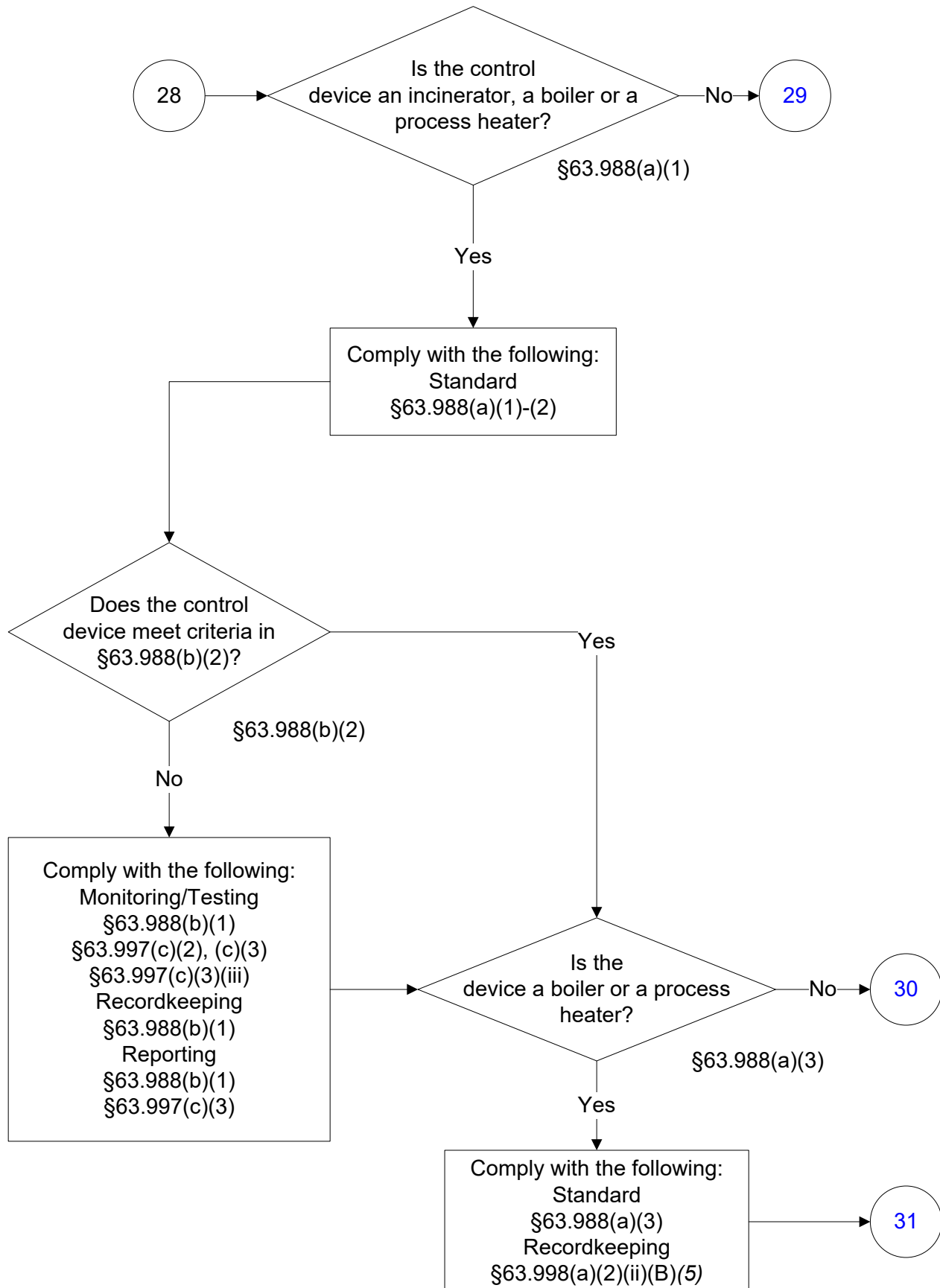
40 CFR Part 63, Subpart EEEE

(20 of 27)



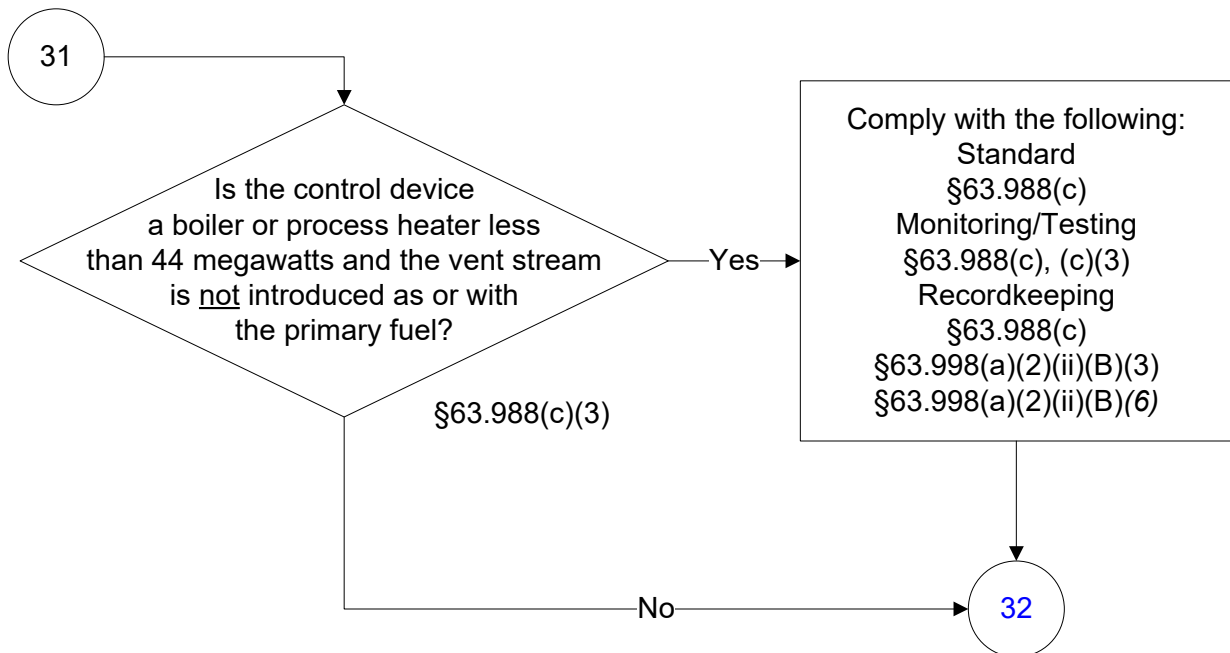
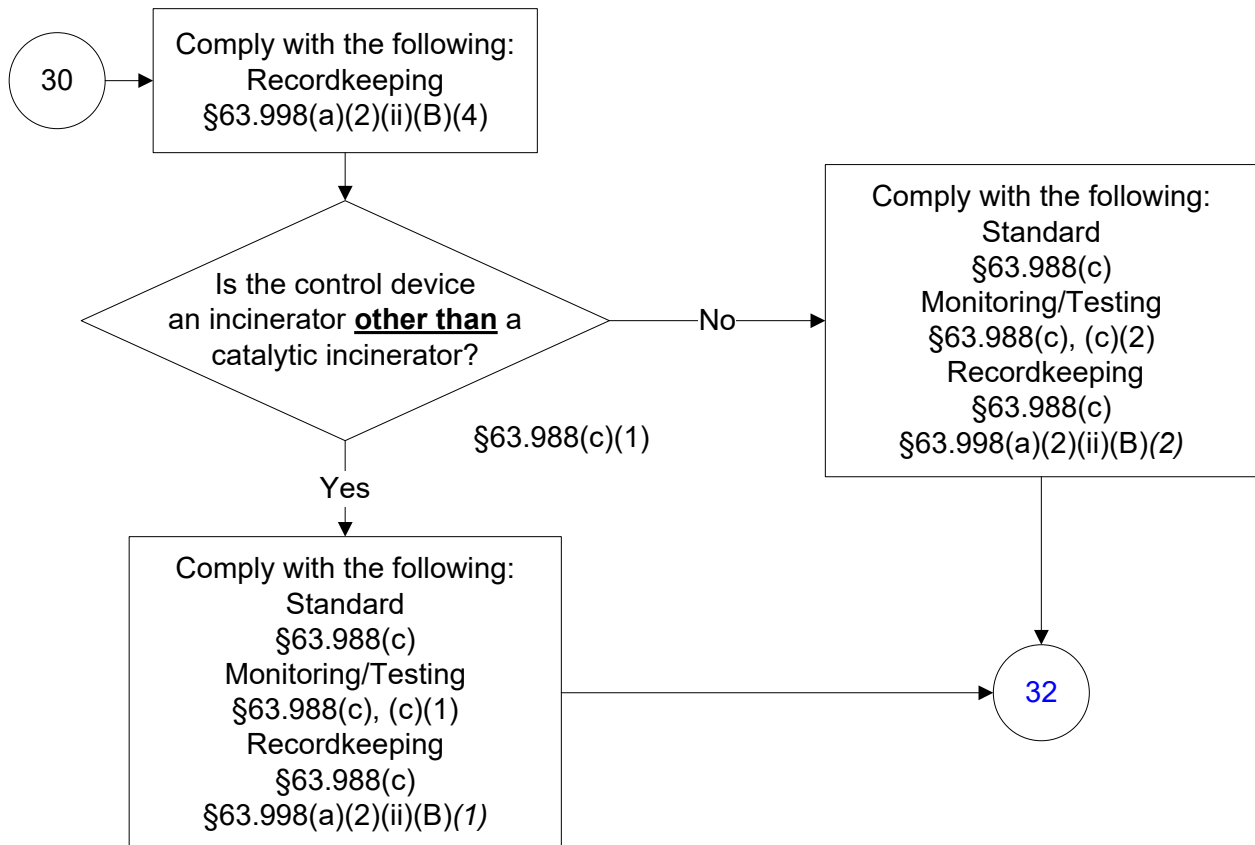
40 CFR Part 63, Subpart EEEE

(21 of 27)



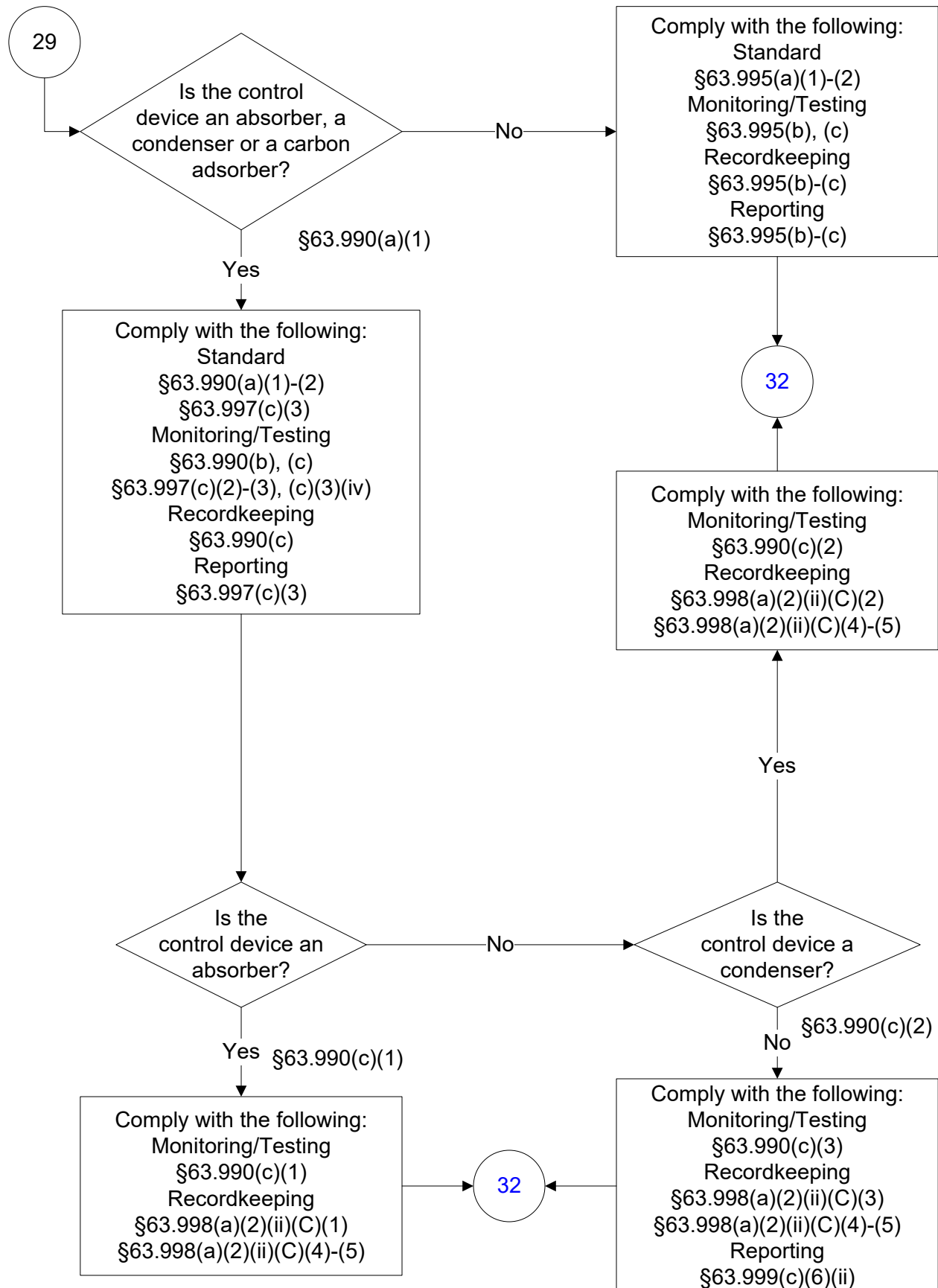
40 CFR Part 63, Subpart EEEE

(22 of 27)



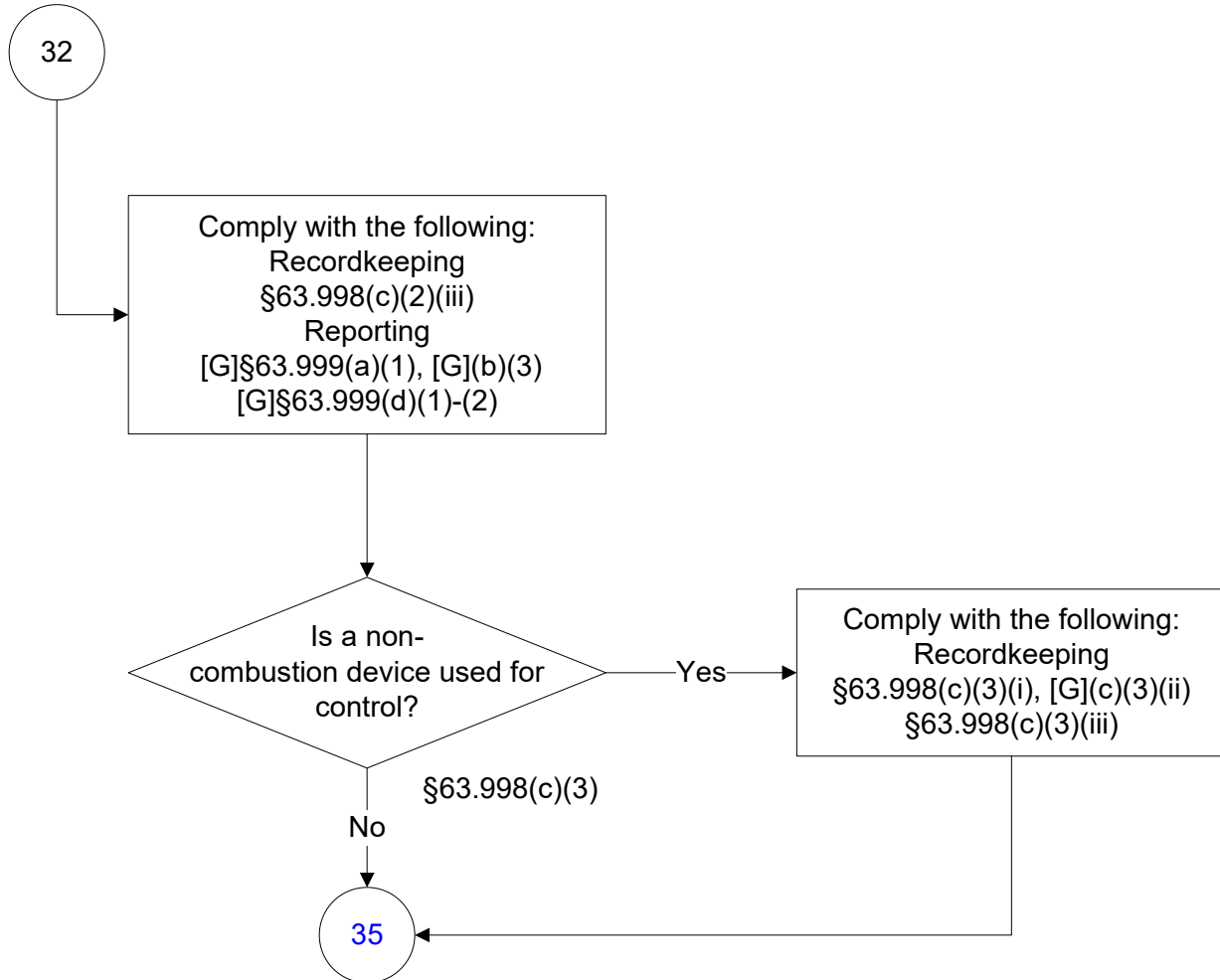
40 CFR Part 63, Subpart EEEE

(23 of 27)



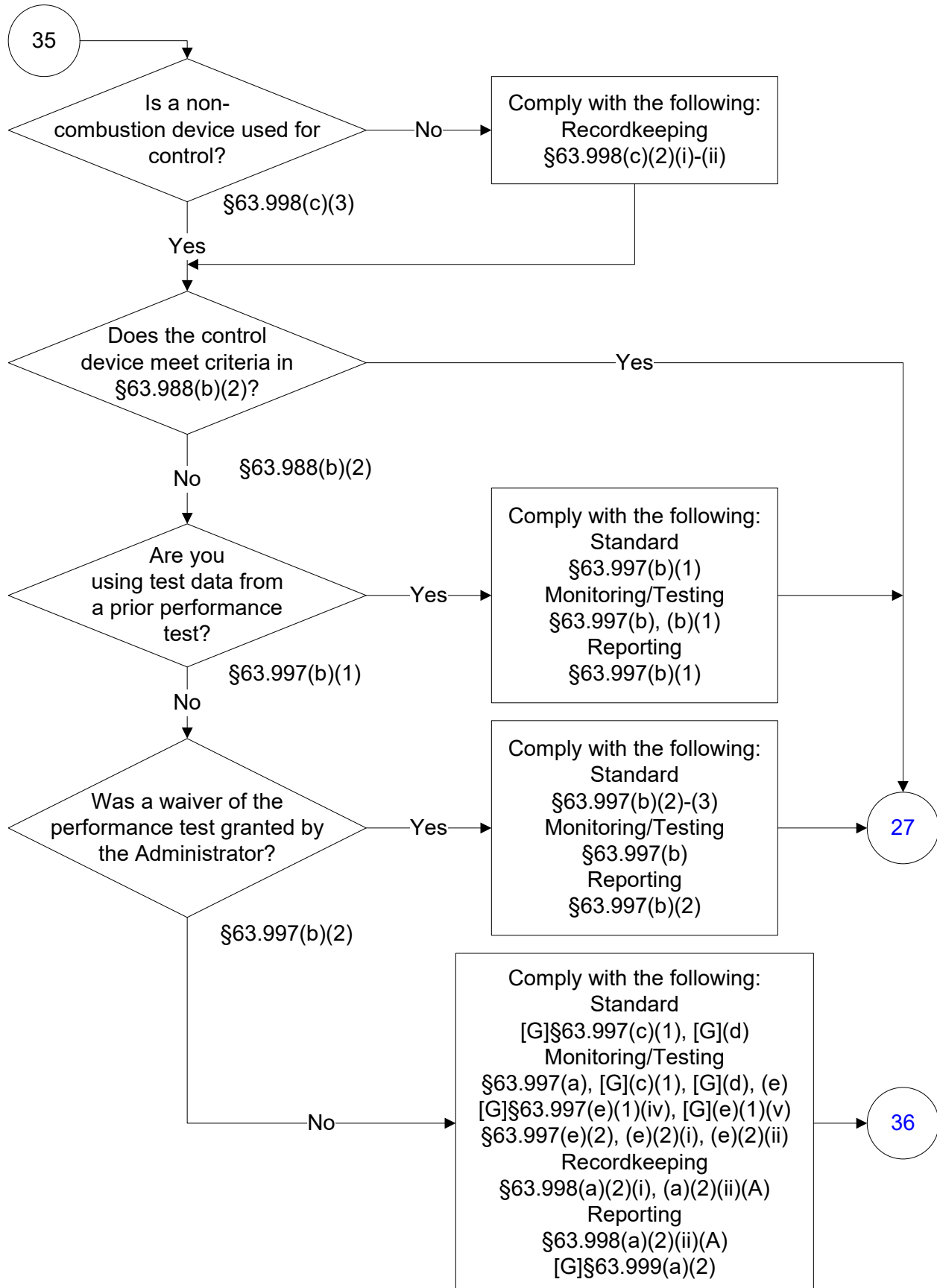
40 CFR Part 63, Subpart EEEE

(24 of 27)



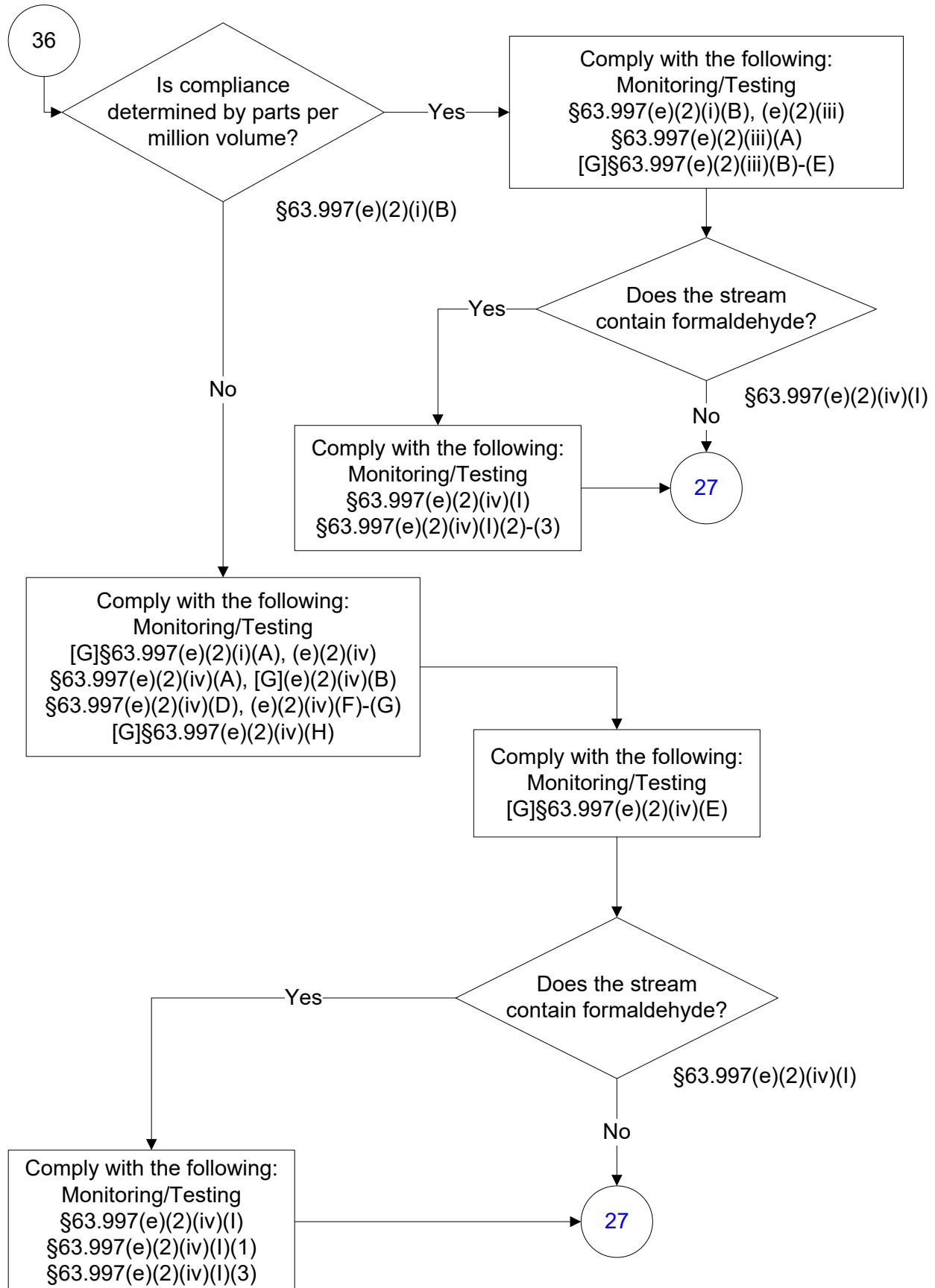
40 CFR Part 63, Subpart EEEE

(25 of 27)



40 CFR Part 63, Subpart EEEE

(26 of 27)



40 CFR Part 63, Subpart EEEE

(27 of 27)

