

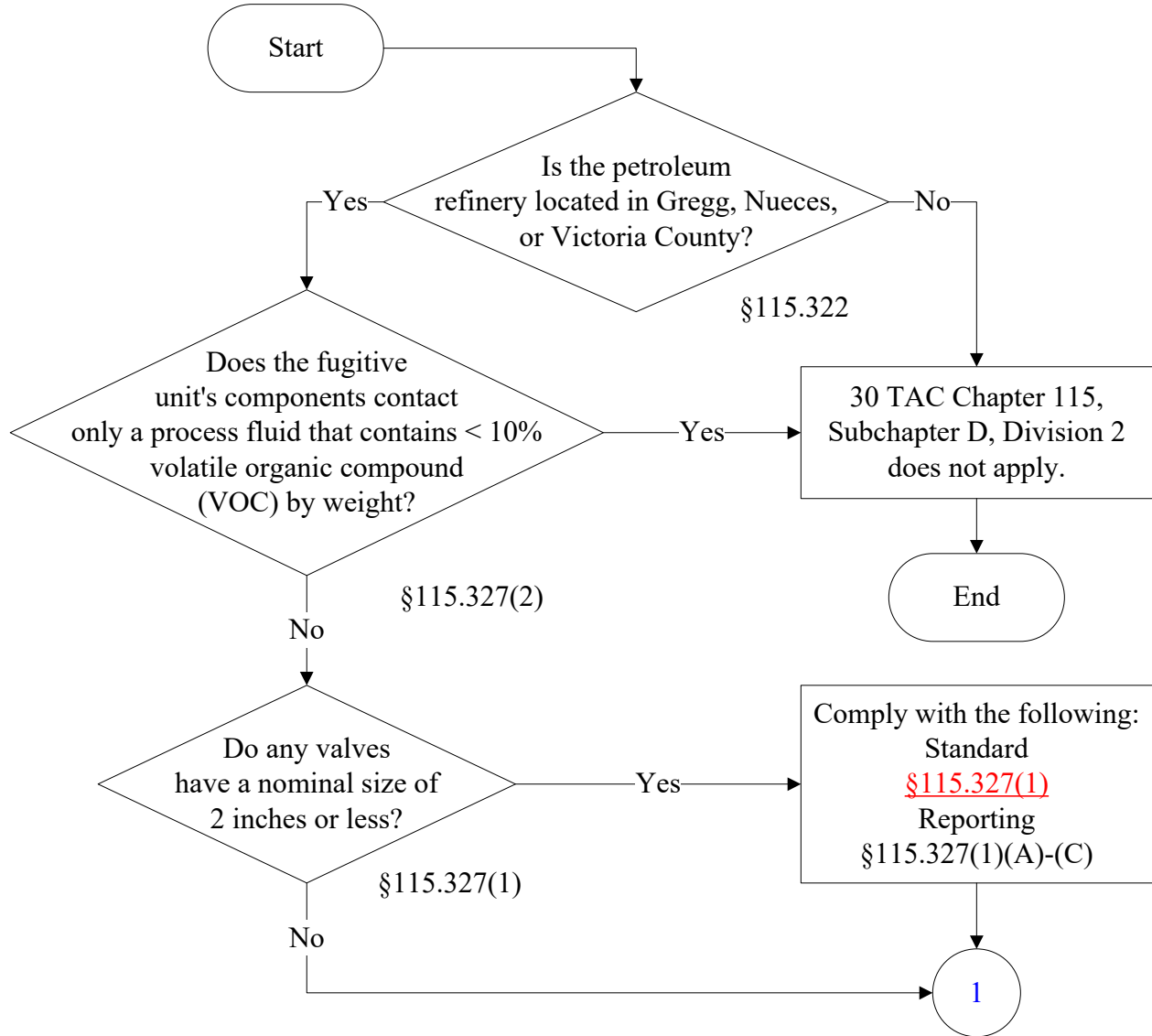


Below is a flowchart describing 30 TAC Chapter 115, Subchapter D, Division 2.

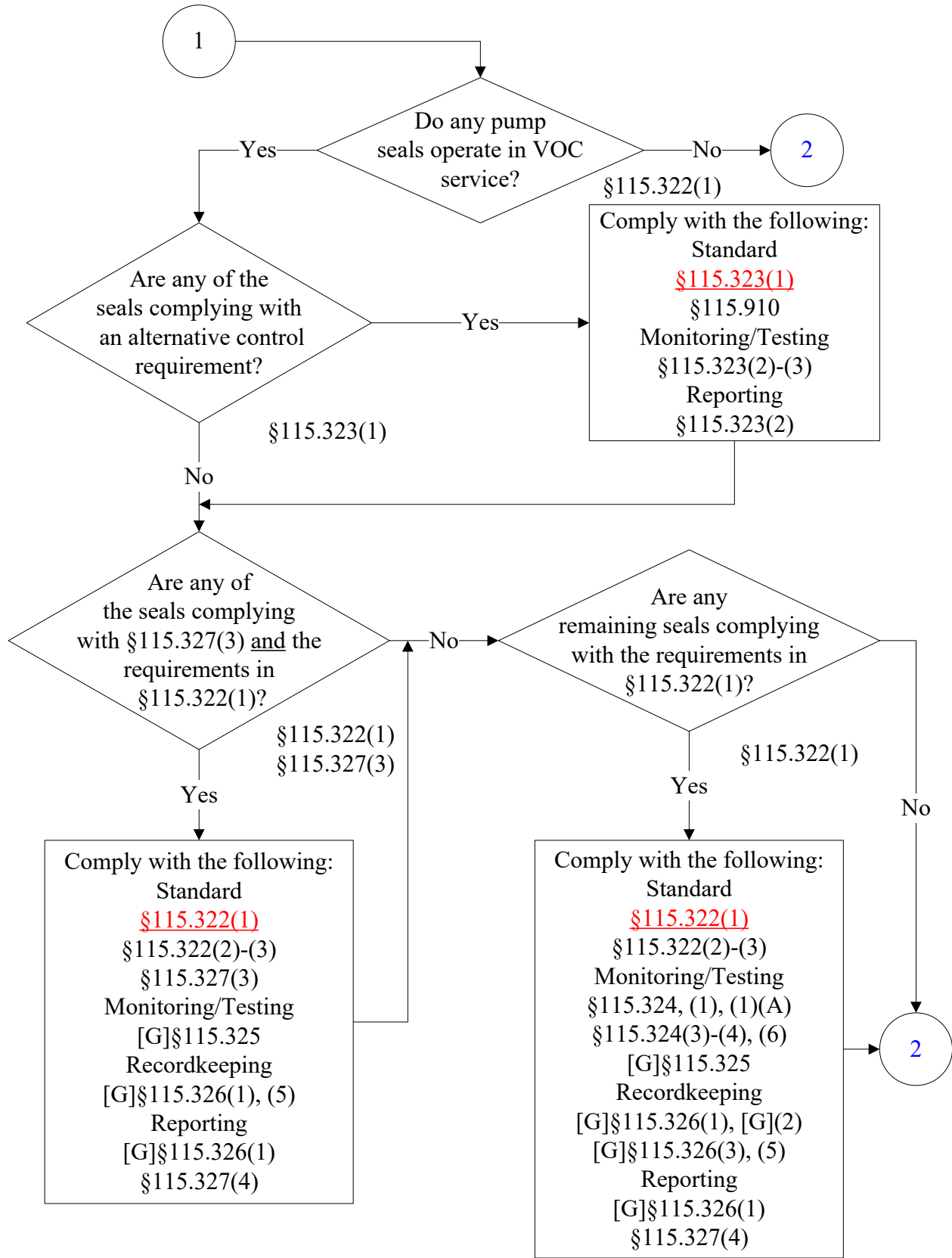
For the text of the statute/rule, please go to

[30 TAC Chapter 115, Subchapter D, Division 2](#)

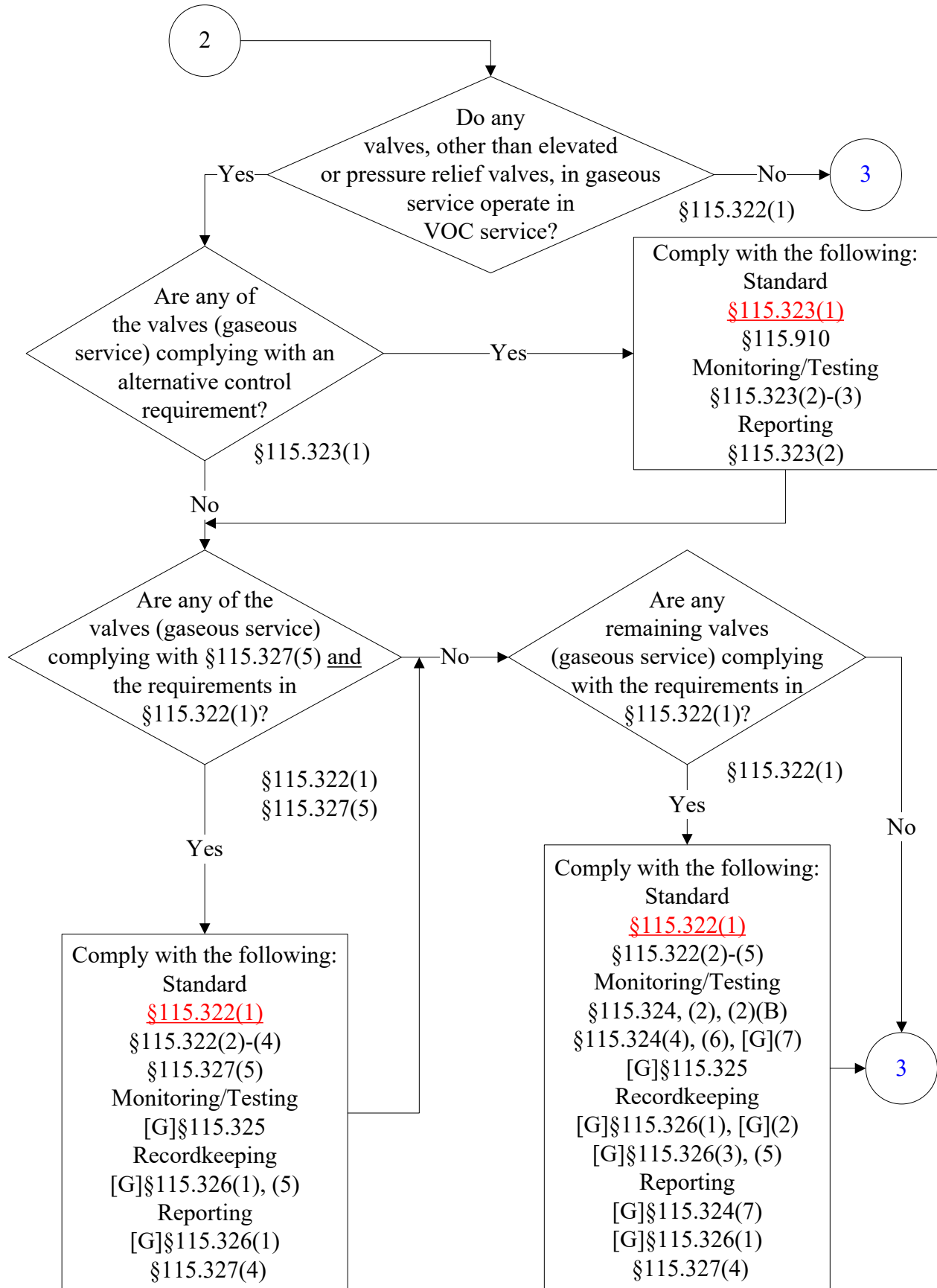
(1 of 10)



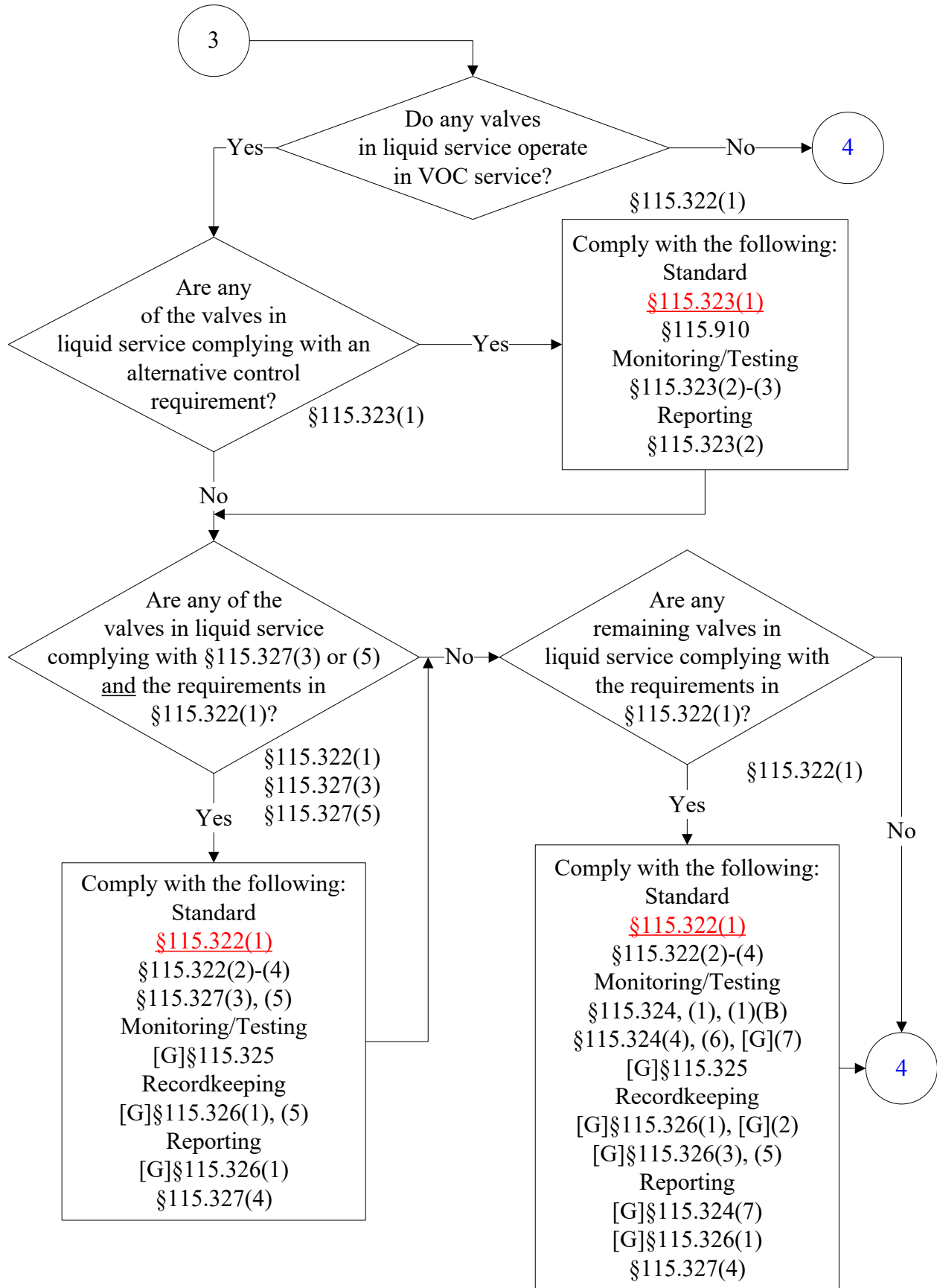
**30 TAC Ch. 115, Subcha. D, Division 2: Fugitive Emission Control
in Petroleum Refineries in Gregg, Nueces, and Victoria Counties
(2 of 10)**



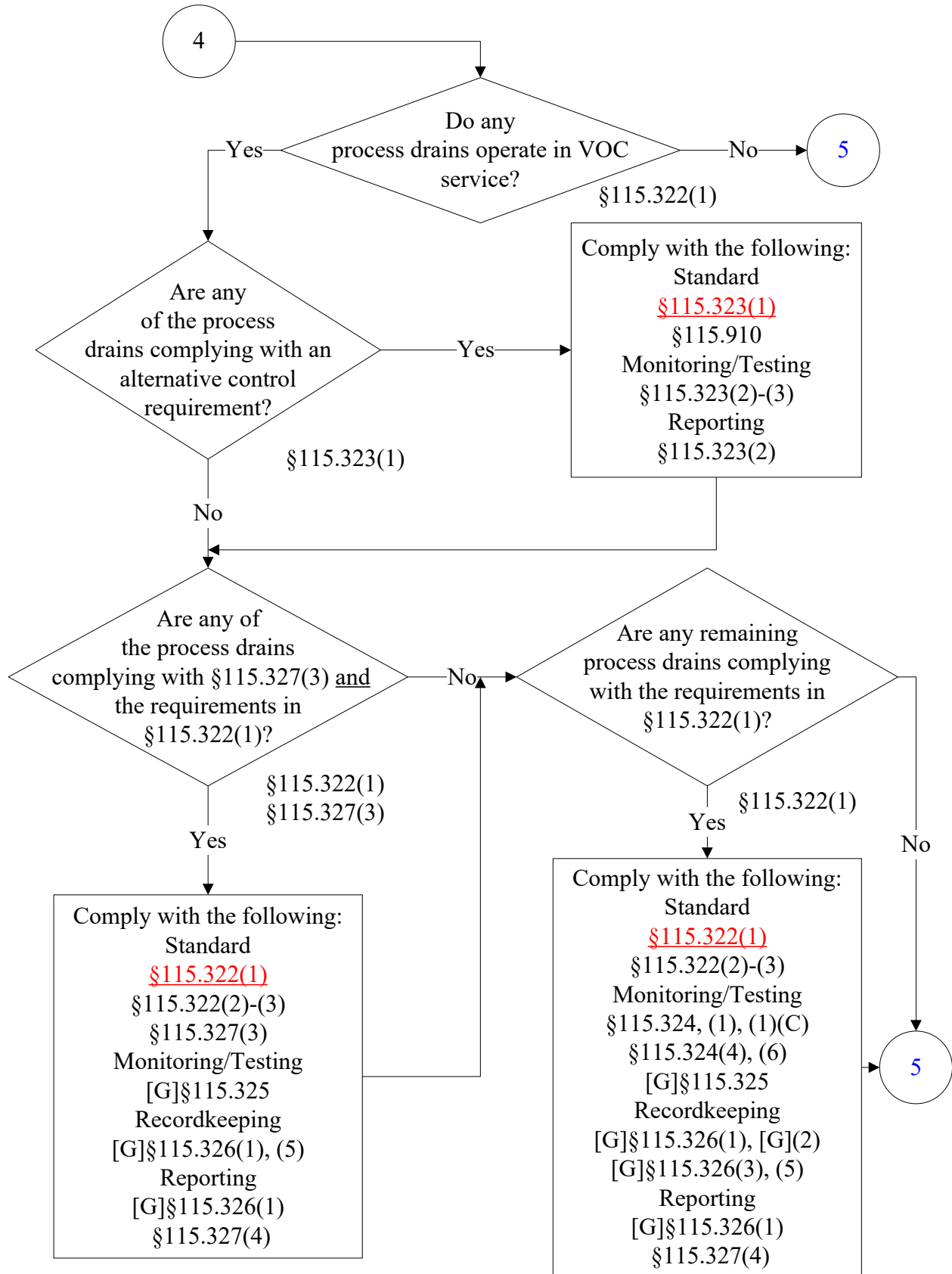
**30 TAC Ch. 115, Subcha. D, Division 2: Fugitive Emission Control
in Petroleum Refineries in Gregg, Nueces, and Victoria Counties
(3 of 10)**



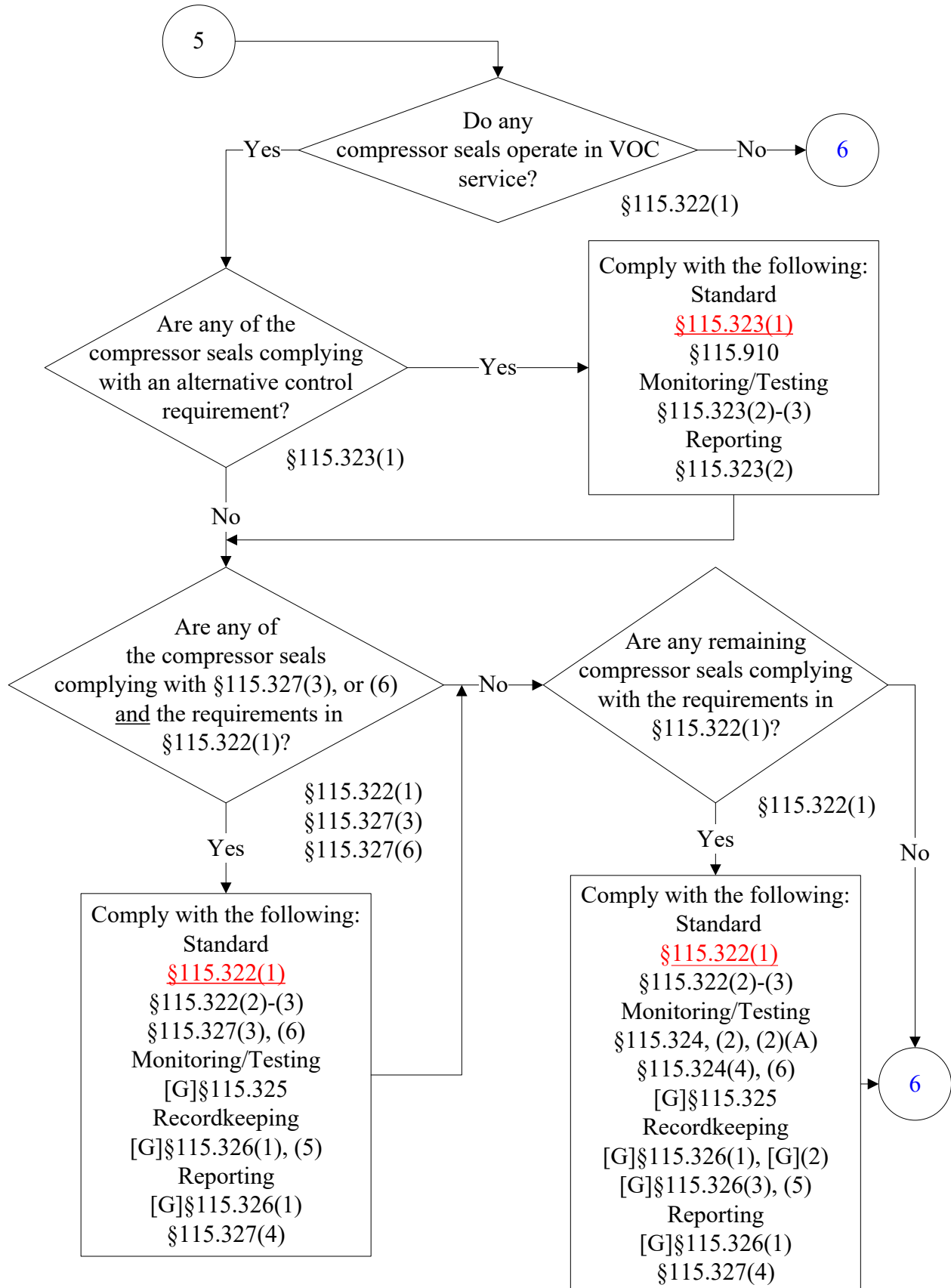
**30 TAC Ch. 115, Subcha. D, Division 2: Fugitive Emission Control
in Petroleum Refineries in Gregg, Nueces, and Victoria Counties
(4 of 10)**



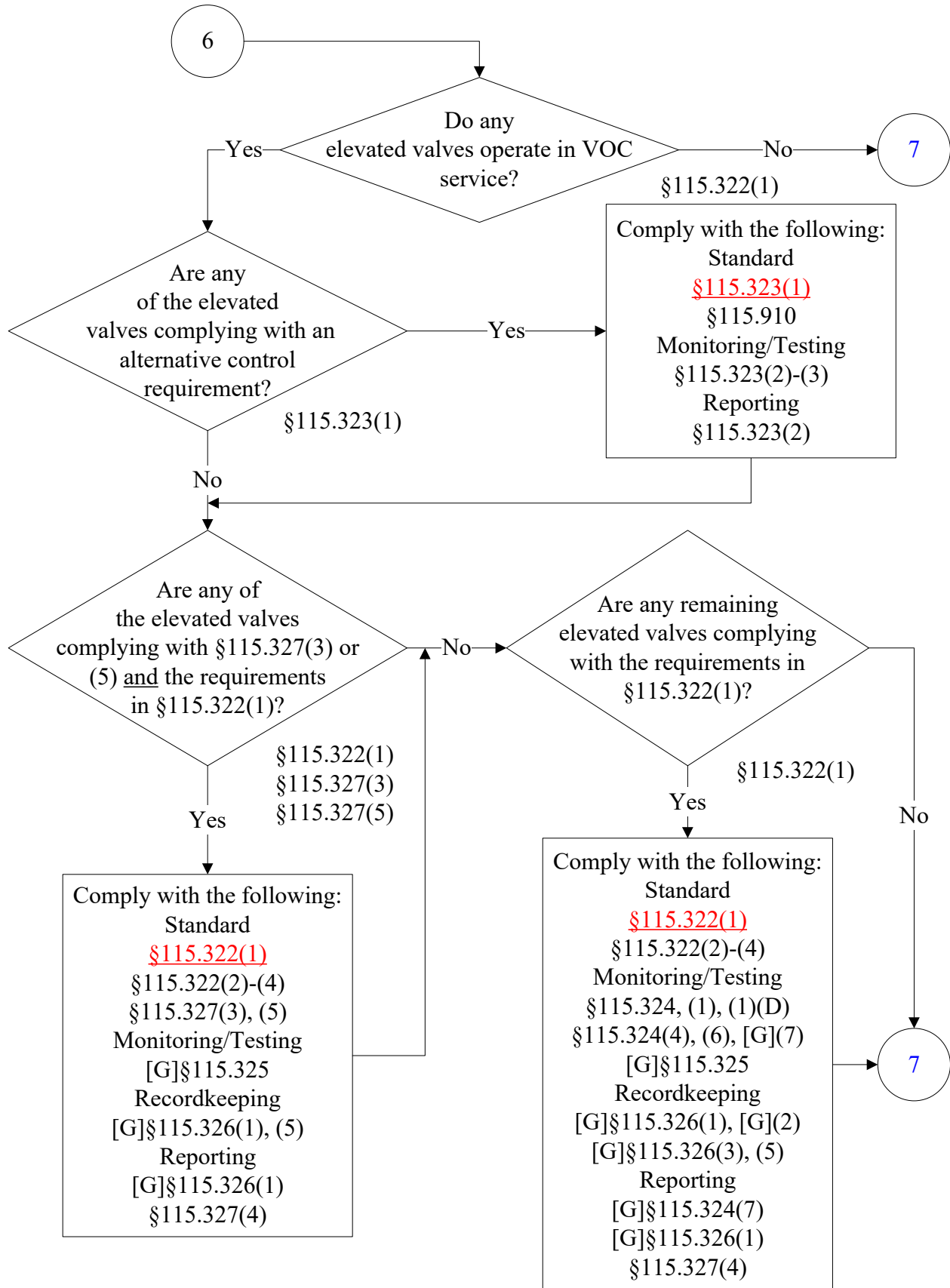
**30 TAC Ch. 115, Subcha. D, Division 2: Fugitive Emission Control
in Petroleum Refineries in Gregg, Nueces, and Victoria Counties
(5 of 10)**



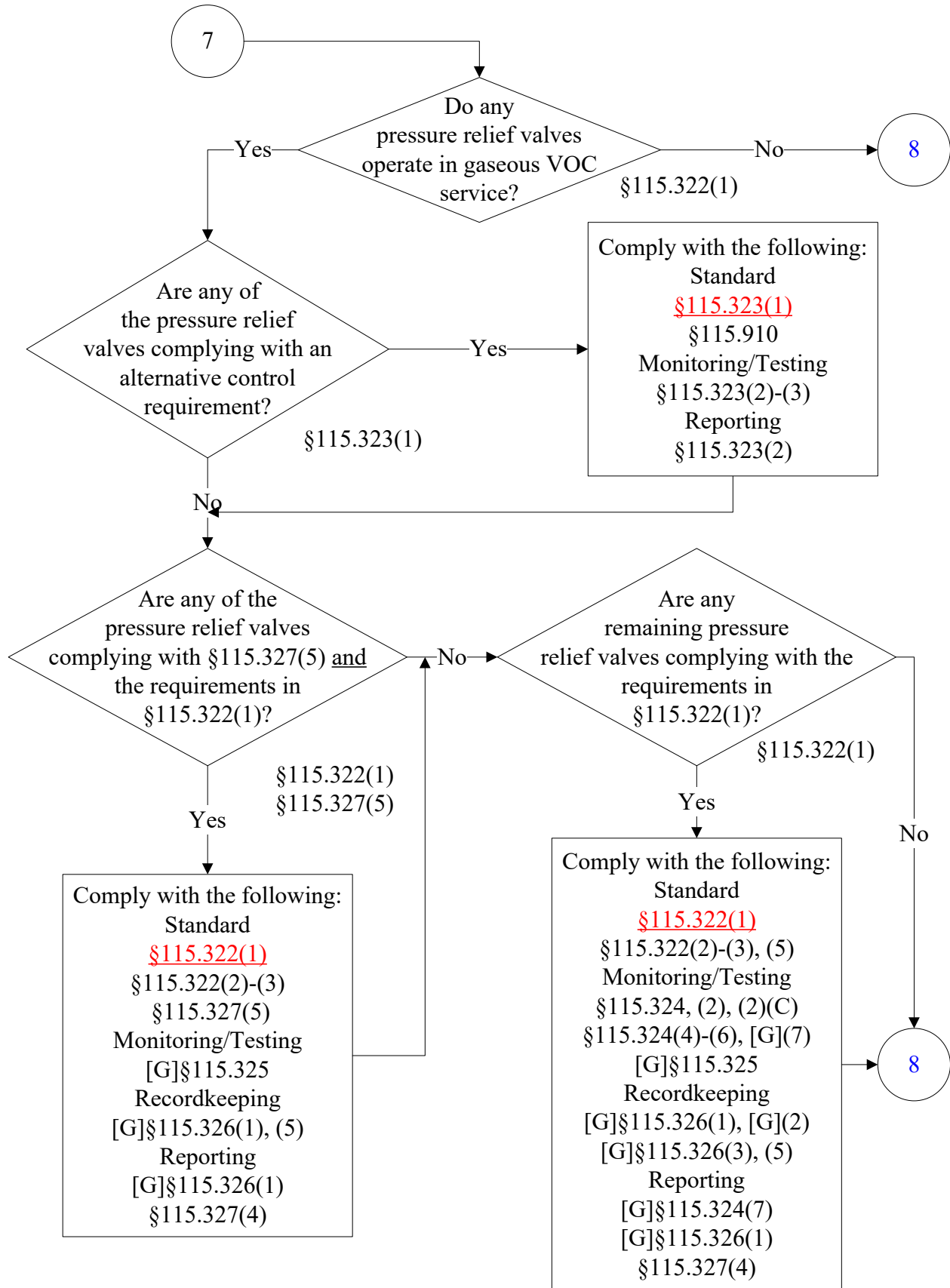
**30 TAC Ch. 115, Subcha. D, Division 2: Fugitive Emission Control
in Petroleum Refineries in Gregg, Nueces, and Victoria Counties
(6 of 10)**



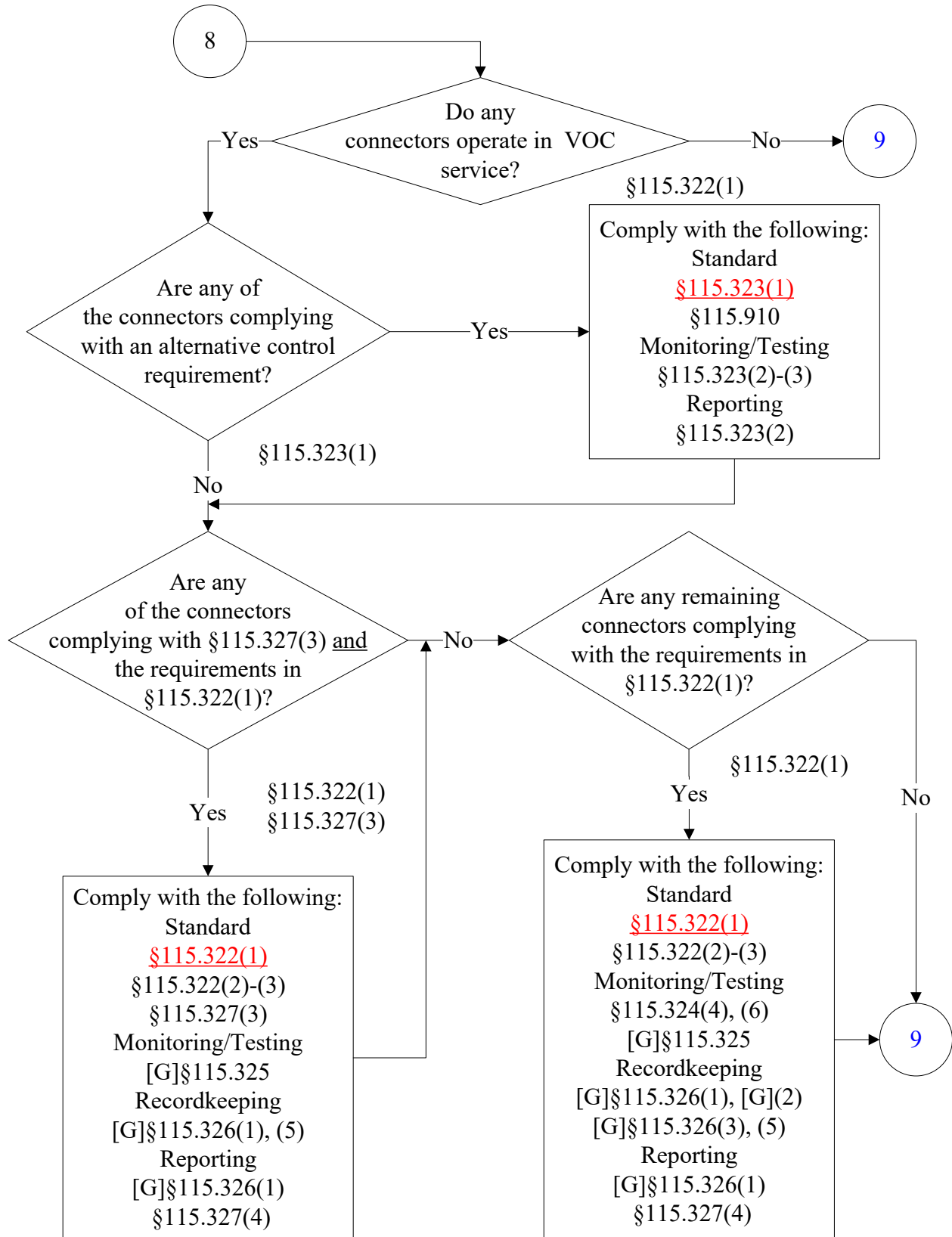
**30 TAC Ch. 115, Subcha. D, Division 2: Fugitive Emission Control
in Petroleum Refineries in Gregg, Nueces, and Victoria Counties
(7 of 10)**



**30 TAC Ch. 115, Subcha. D, Division 2: Fugitive Emission Control
in Petroleum Refineries in Gregg, Nueces, and Victoria Counties
(8 of 10)**



**30 TAC Ch. 115, Subcha. D, Division 2: Fugitive Emission Control
in Petroleum Refineries in Gregg, Nueces, and Victoria Counties
(9 of 10)**



**30 TAC Ch. 115, Subcha. D, Division 2: Fugitive Emission Control
in Petroleum Refineries in Gregg, Nueces, and Victoria Counties
(10 of 10)**

