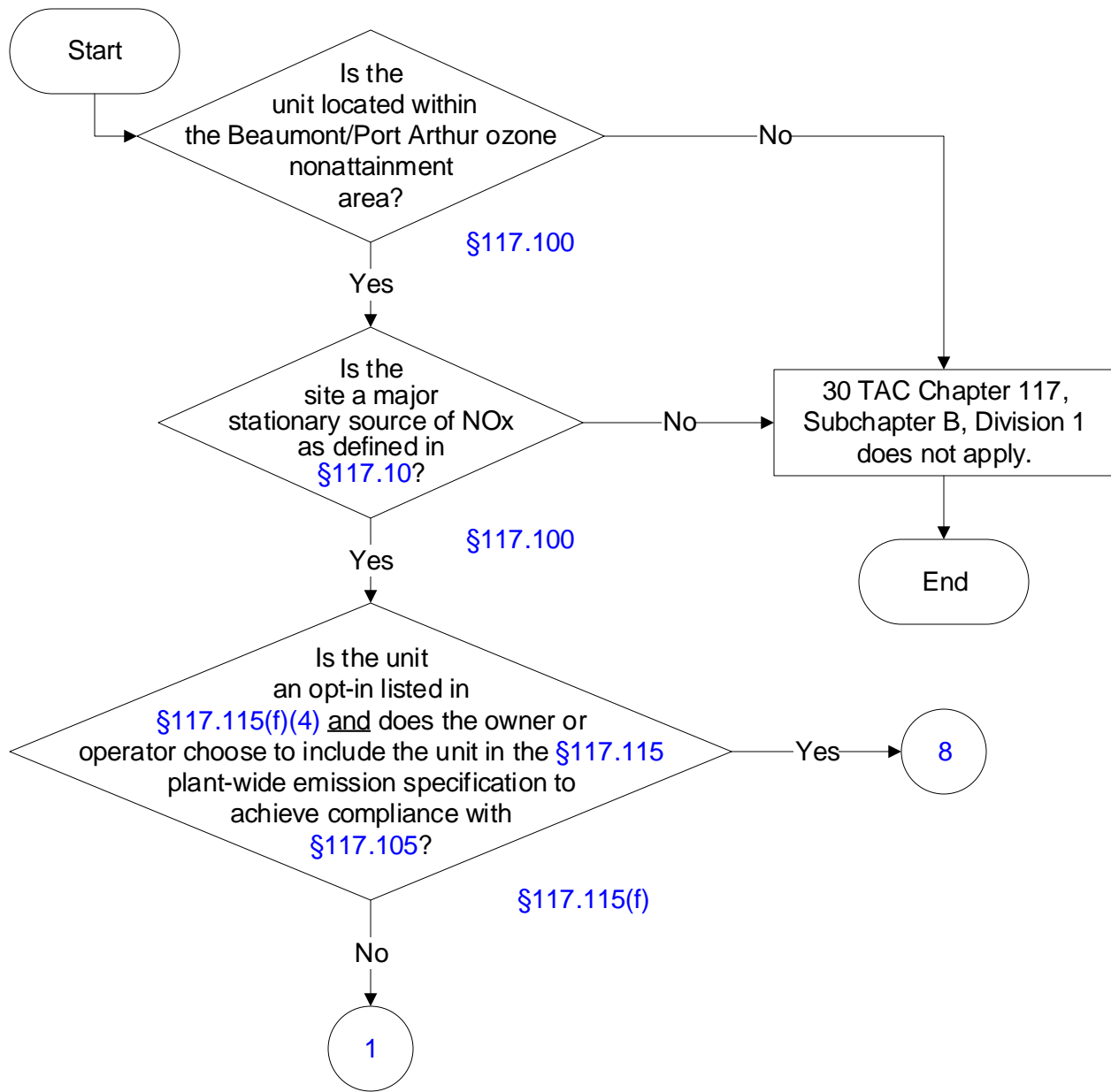
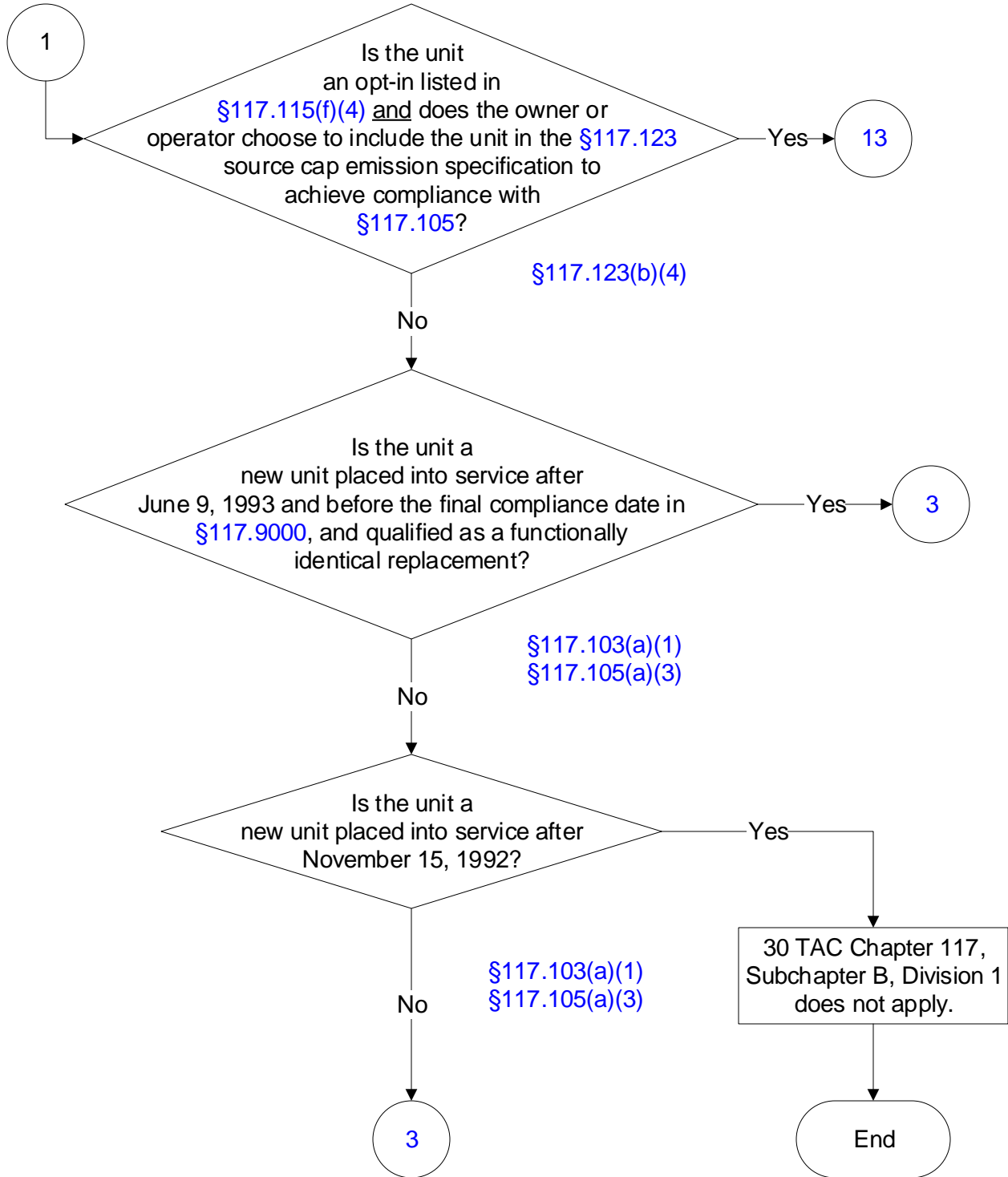




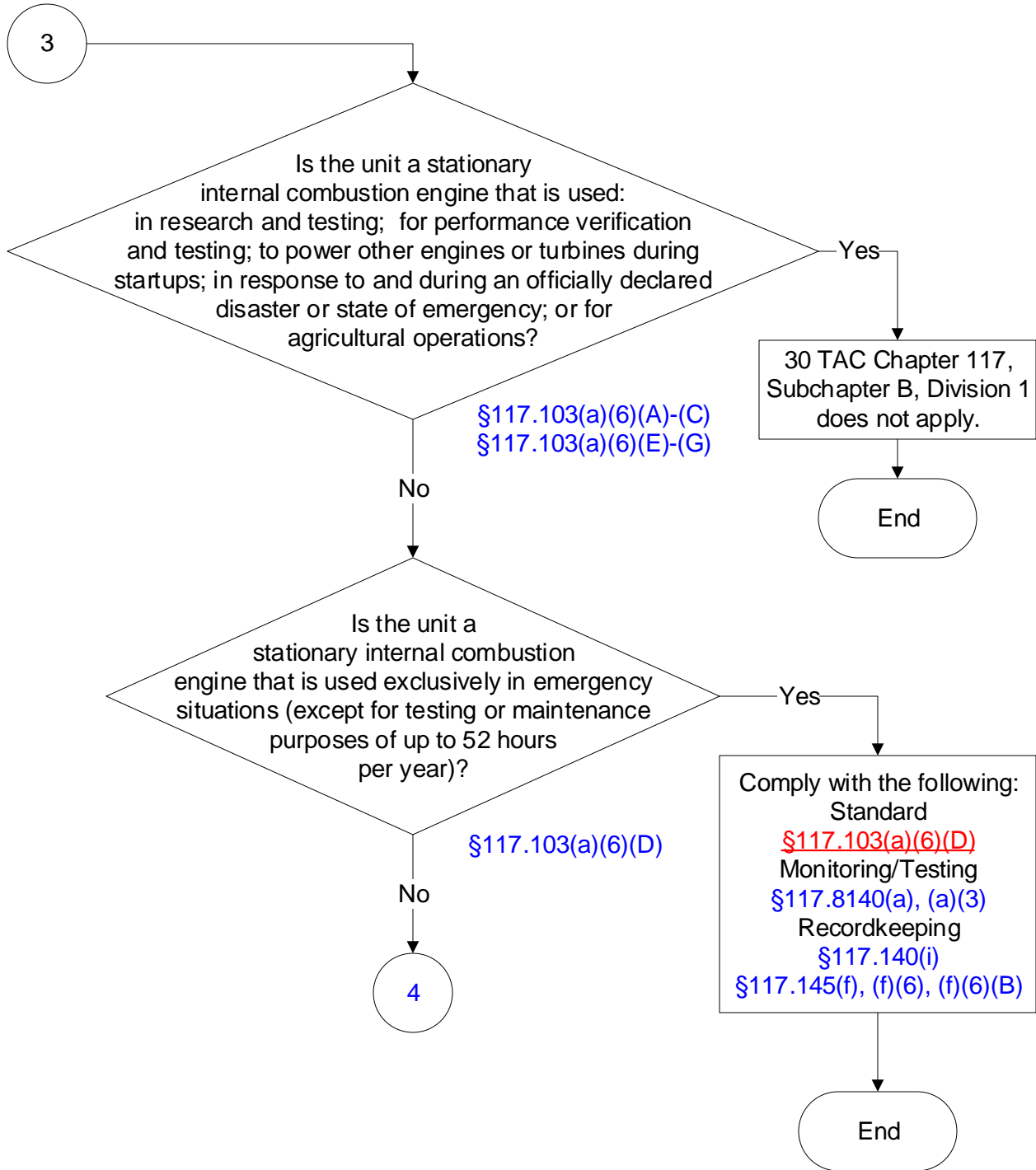
Below is a flowchart describing 30 TAC Ch. 117, Subch. B, Division 1: Engines. It will likely not be accessible using a screen reader. For the text of the statute/rule, please go to [30 TAC Chapter 117, Subchapter B, Division 1: Engines](#) (1 of 30)



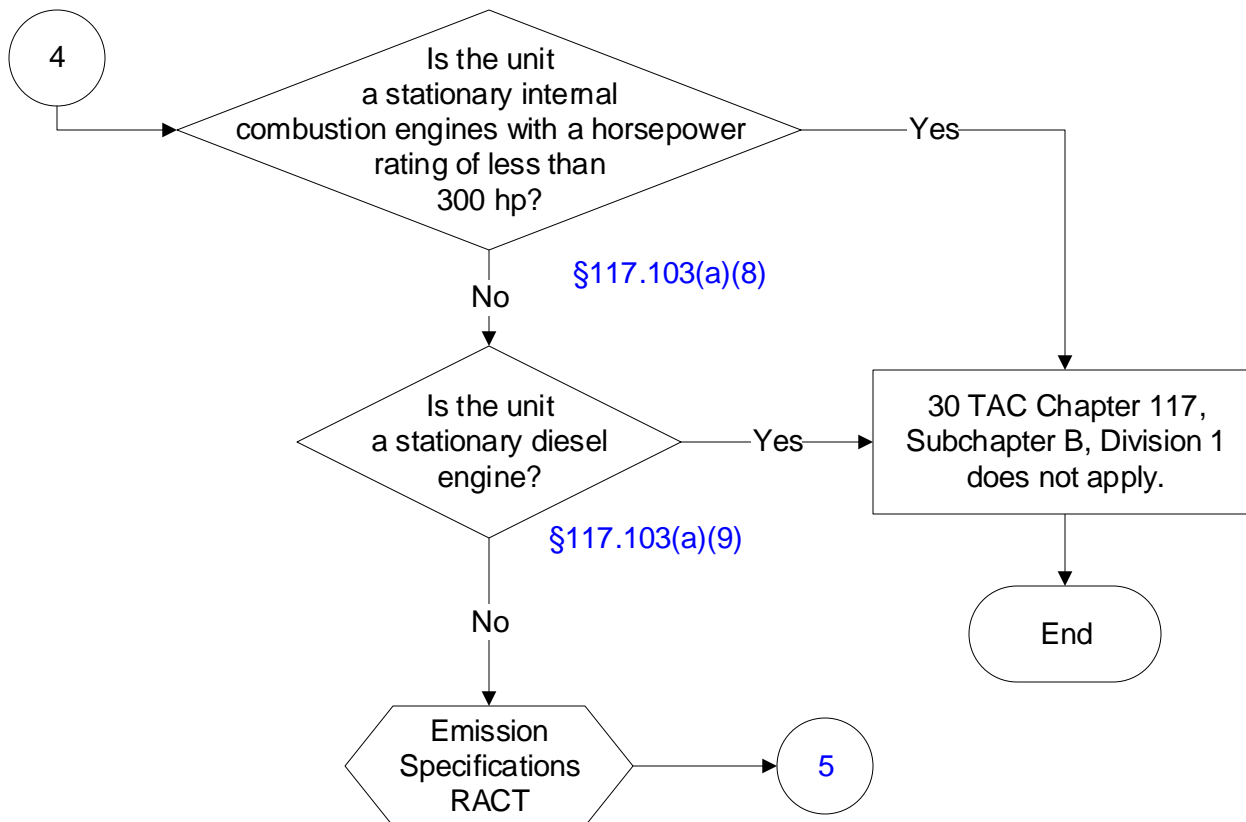
30 TAC Chapter 117, Subchapter B, Combustion Control at Major ICI, Division 1,
Beaumont-Port Arthur Ozone Nonattainment Area: Stationary Internal
Combustion Engines
(2 of 30)



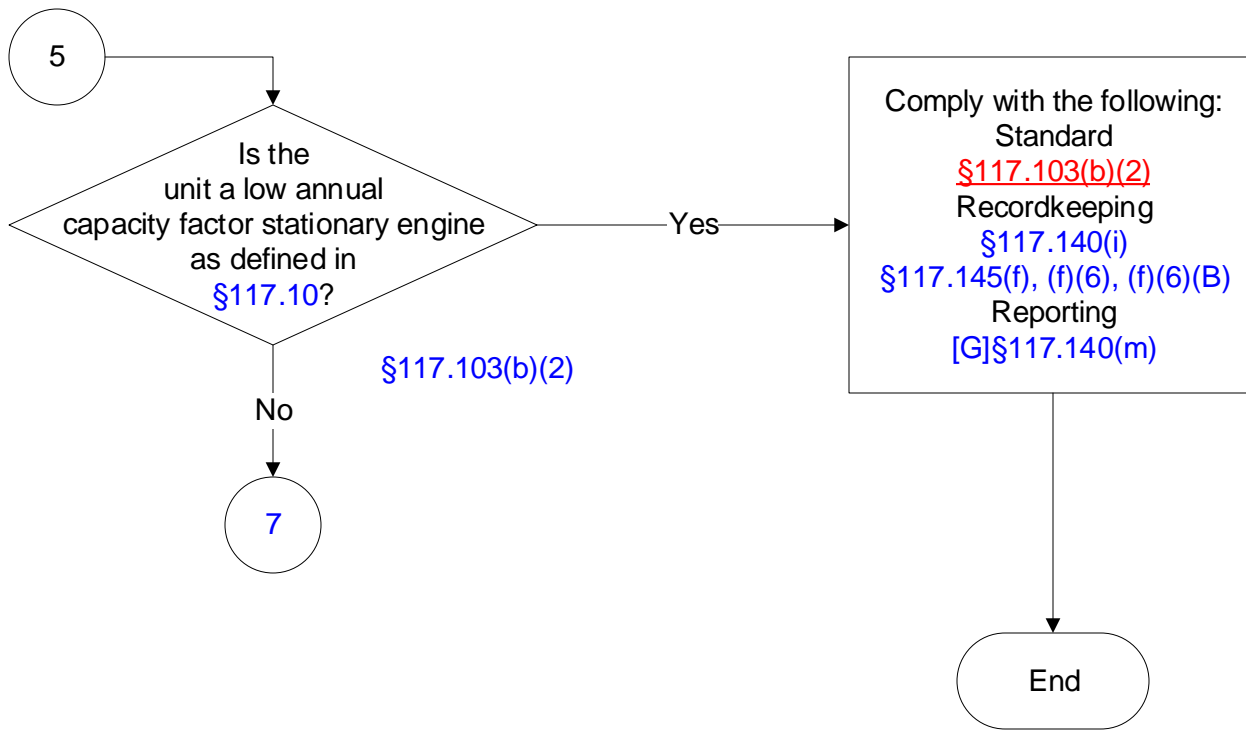
**30 TAC Chapter 117, Subchapter B, Combustion Control at Major ICI, Division 1,
Beaumont-Port Arthur Ozone Nonattainment Area: Stationary Internal
Combustion Engines
(3 of 30)**



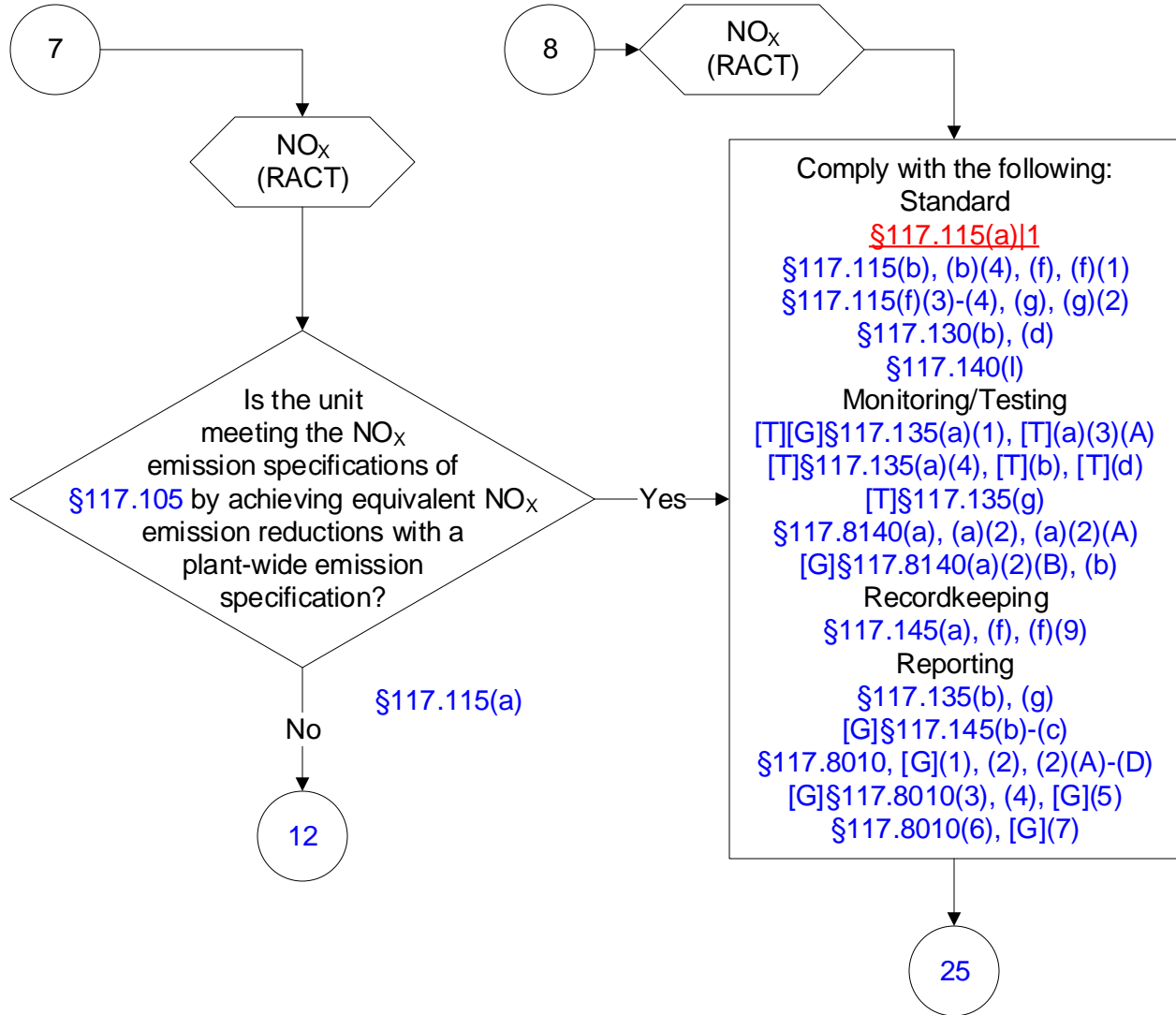
30 TAC Chapter 117, Subchapter B, Combustion Control at Major ICI, Division 1,
Beaumont-Port Arthur Ozone Nonattainment Area: Stationary Internal
Combustion Engines
(4 of 30)



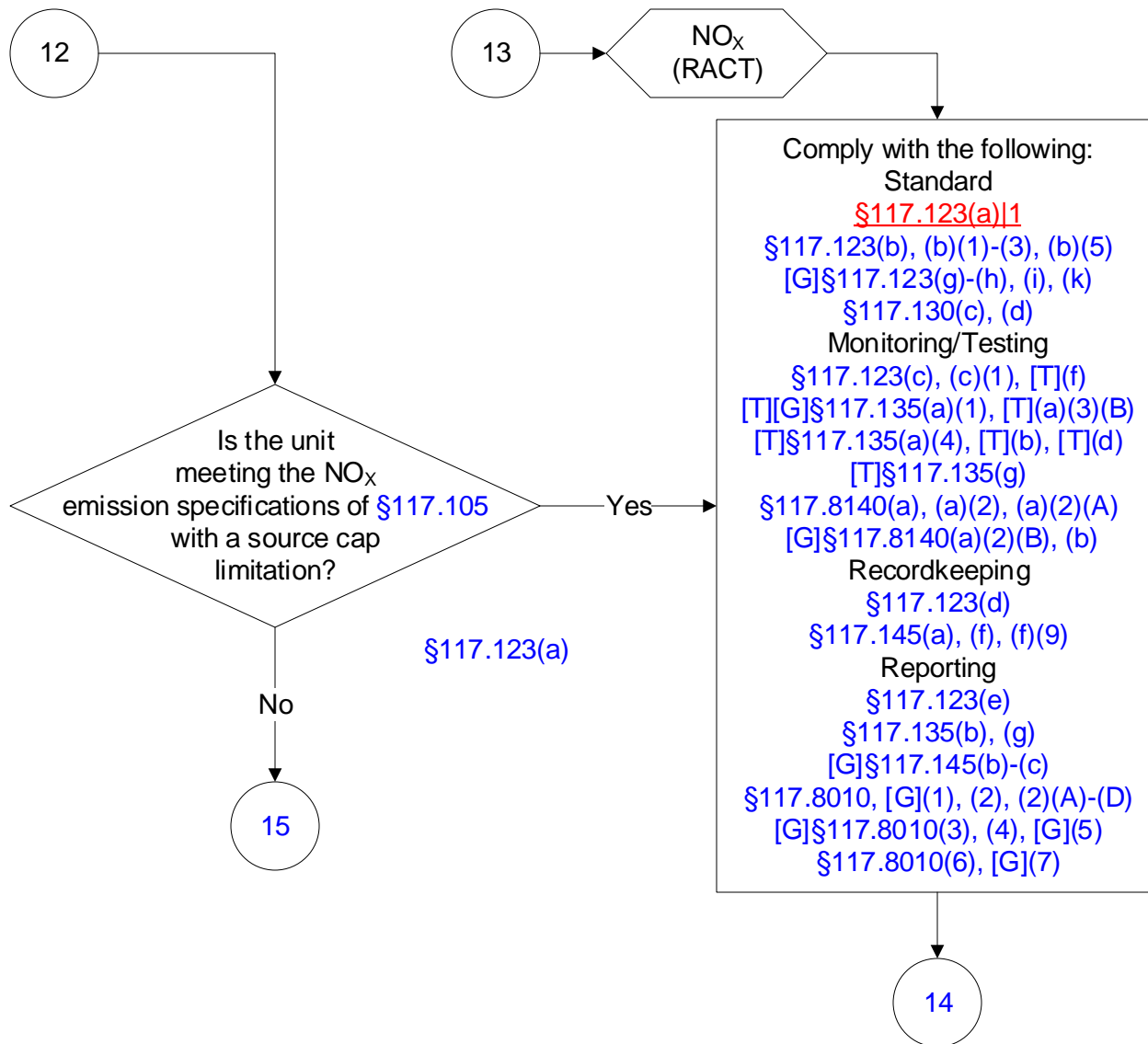
30 TAC Chapter 117, Subchapter B, Combustion Control at Major ICI, Division 1,
Beaumont-Port Arthur Ozone Nonattainment Area: Stationary Internal
Combustion Engines
(5 of 30)



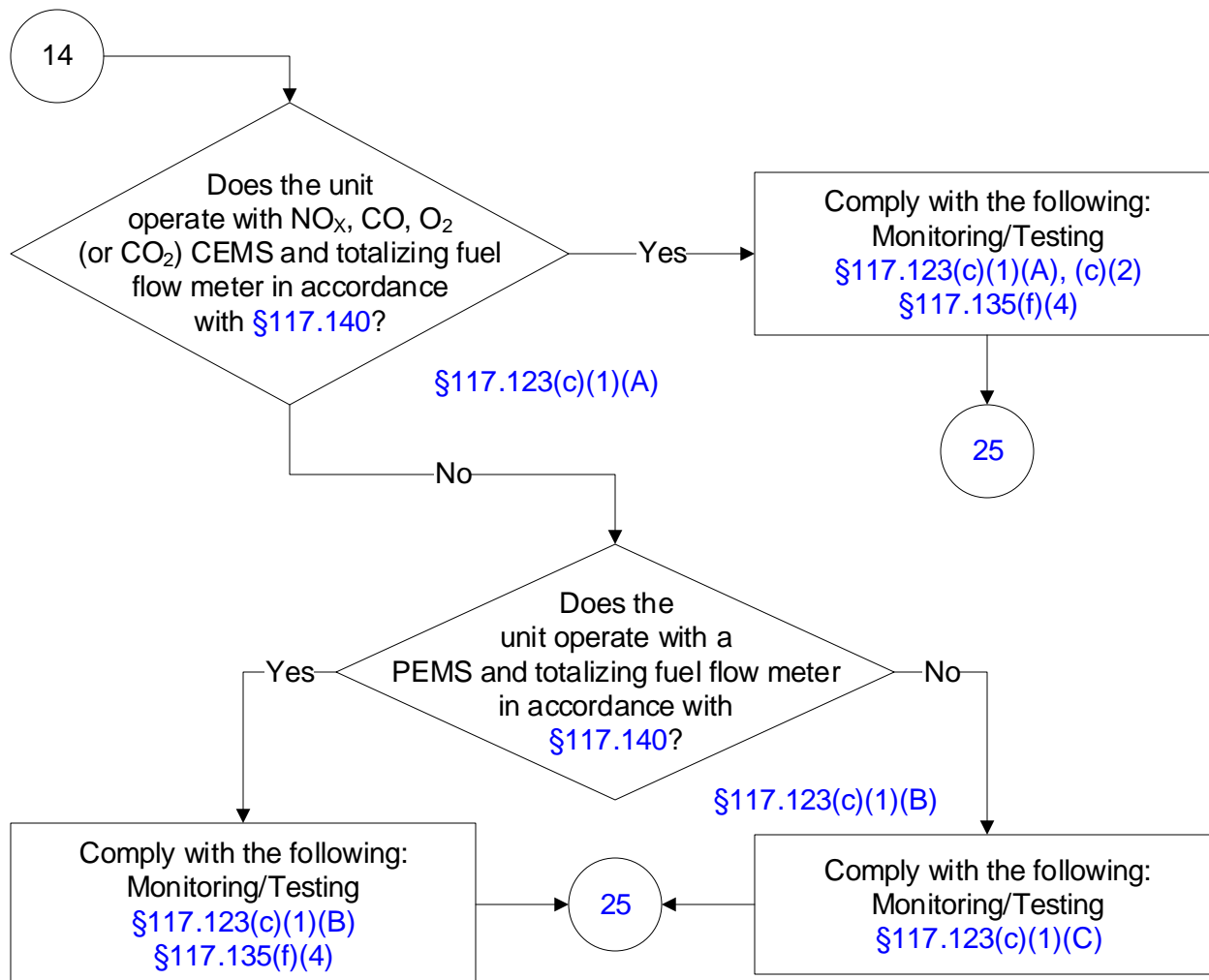
**30 TAC Chapter 117, Subchapter B, Combustion Control at Major ICI, Division 1,
Beaumont-Port Arthur Ozone Nonattainment Area: Stationary Internal
Combustion Engines
(6 of 30)**



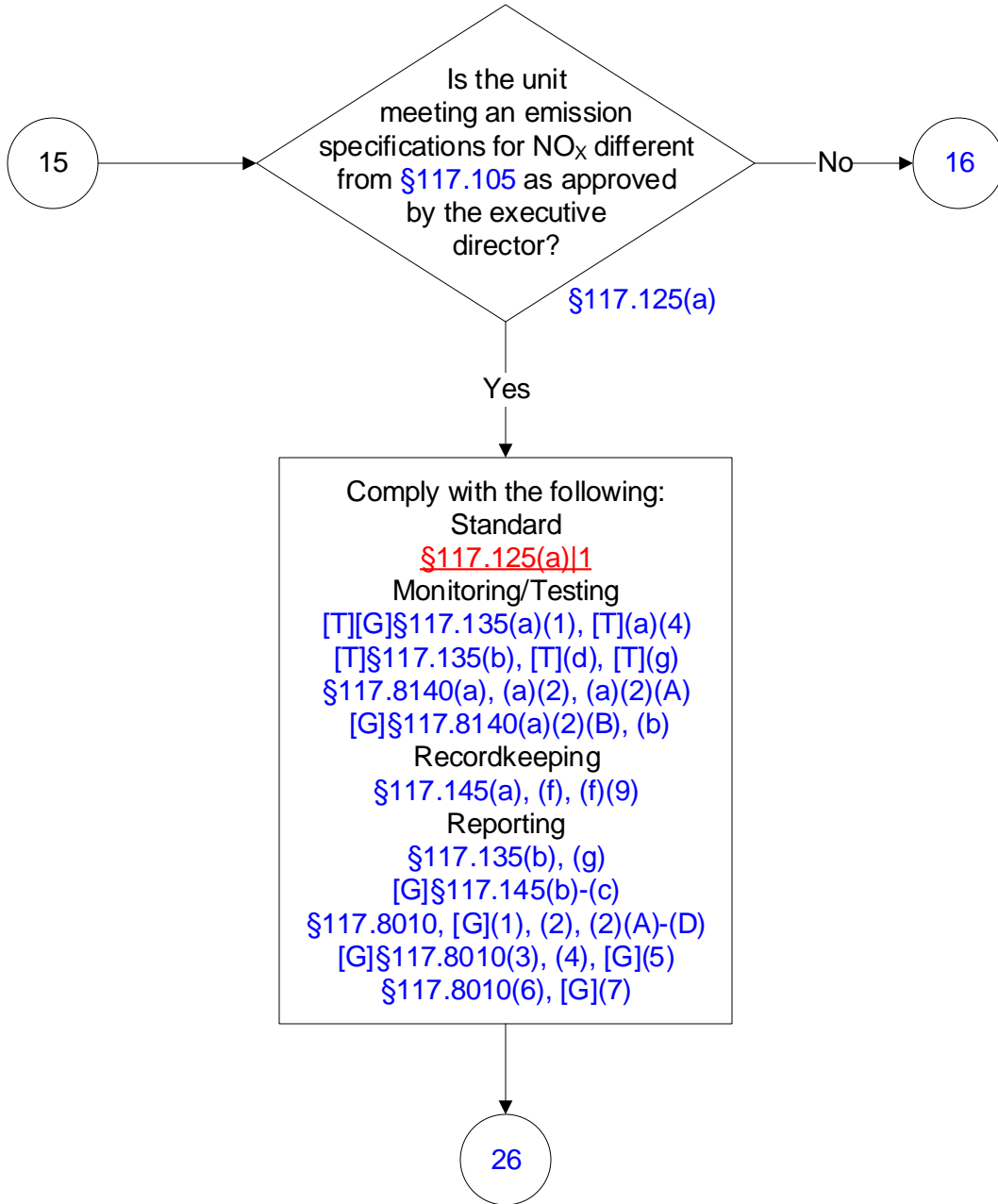
**30 TAC Chapter 117, Subchapter B, Combustion Control at Major ICI, Division 1,
Beaumont-Port Arthur Ozone Nonattainment Area: Stationary Internal
Combustion Engines
(7 of 30)**



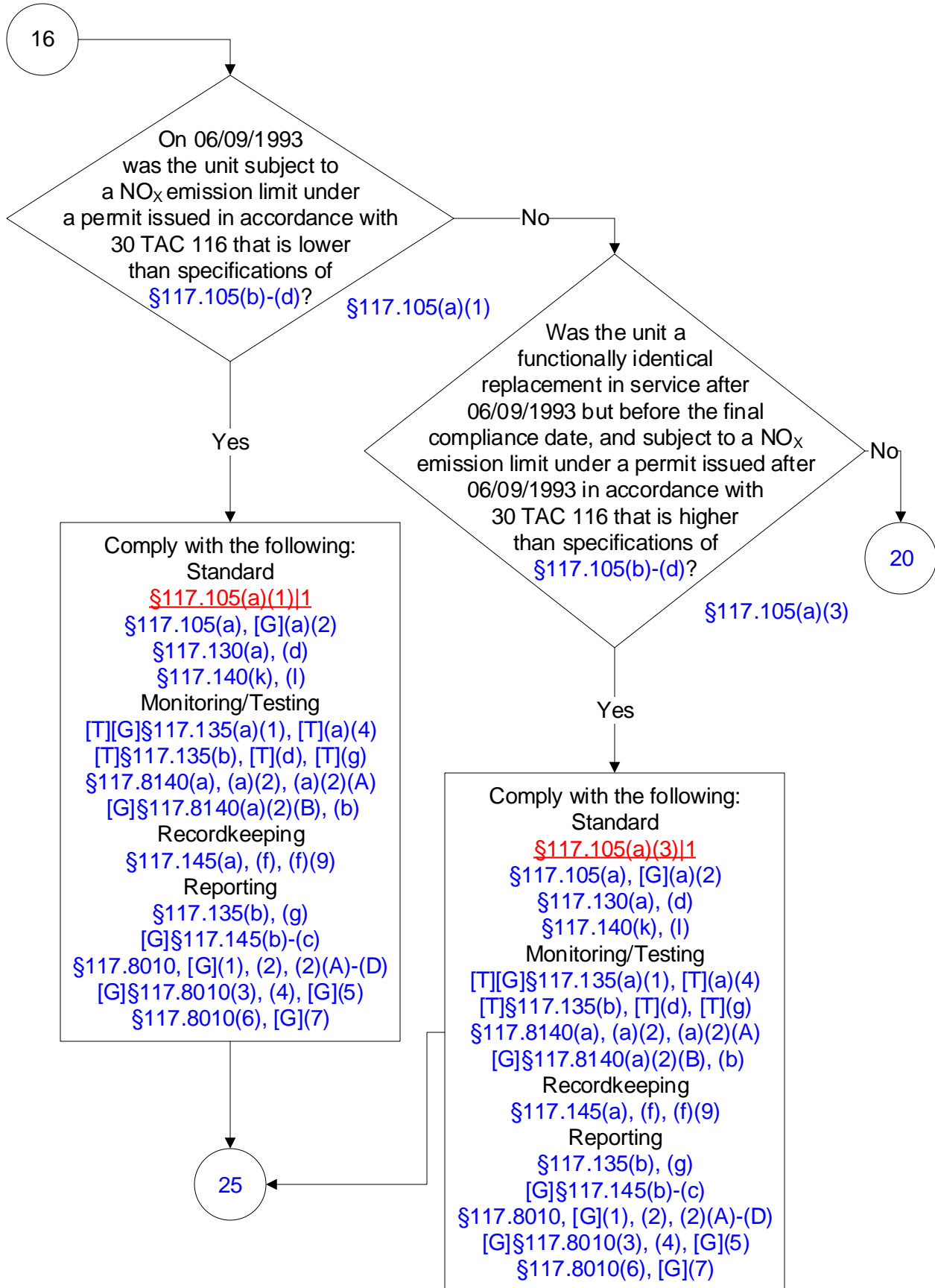
**30 TAC Chapter 117, Subchapter B, Combustion Control at Major ICI, Division 1,
Beaumont-Port Arthur Ozone Nonattainment Area: Stationary Internal
Combustion Engines
(8 of 30)**



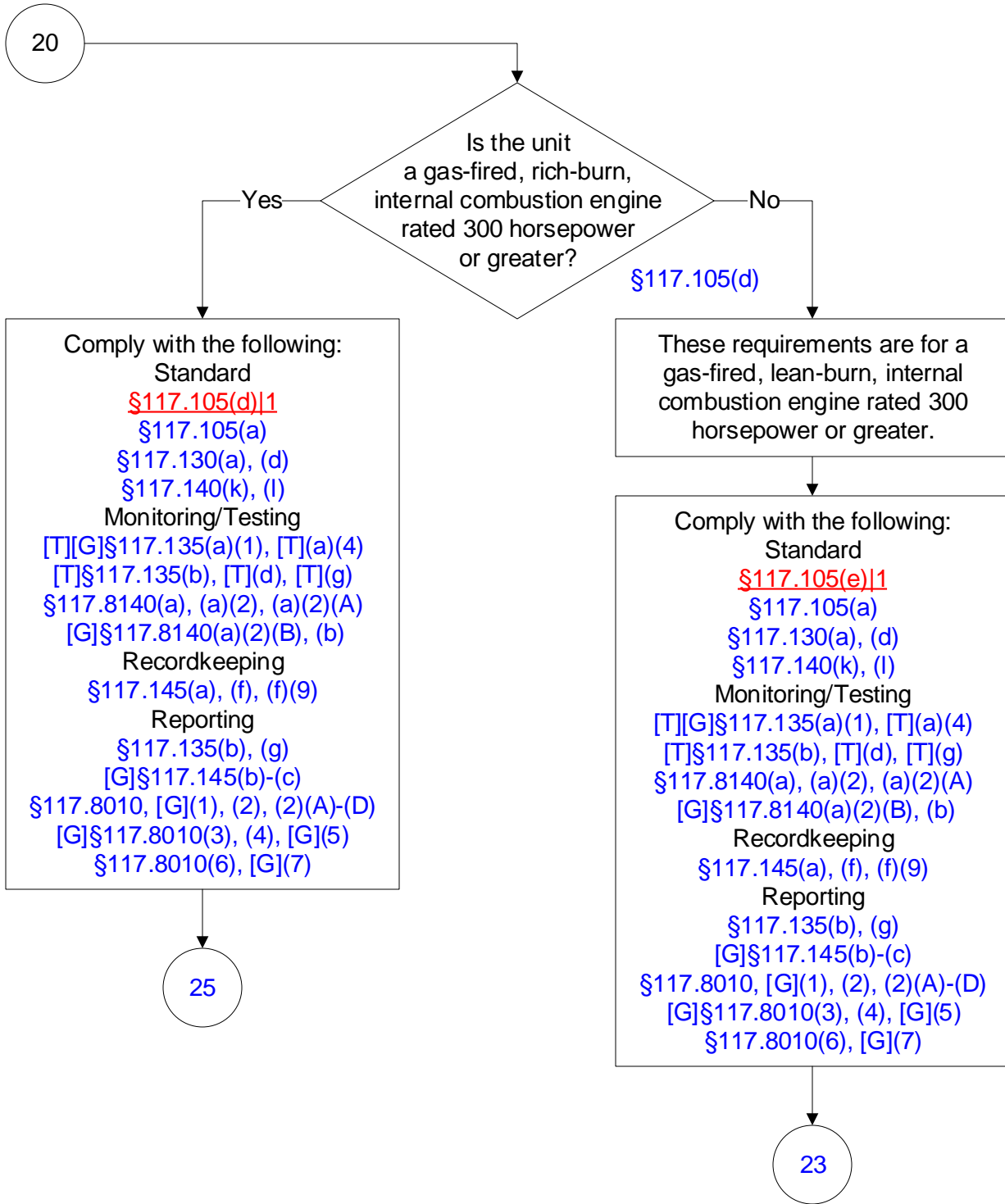
30 TAC Chapter 117, Subchapter B, Combustion Control at Major ICI, Division 1,
Beaumont-Port Arthur Ozone Nonattainment Area: Stationary Internal
Combustion Engines
(9 of 30)



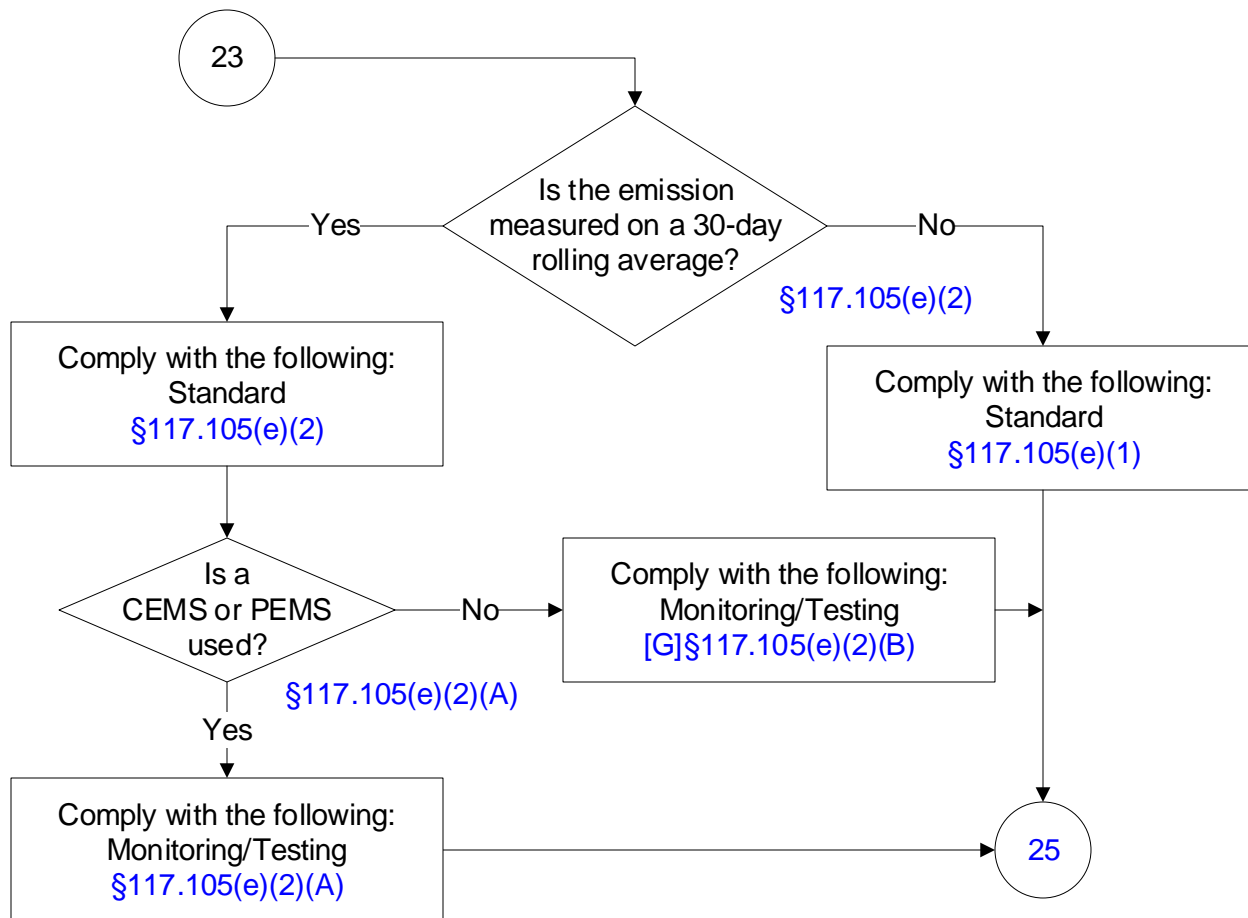
**30 TAC Chapter 117, Subchapter B, Combustion Control at Major ICI, Division 1,
Beaumont-Port Arthur Ozone Nonattainment Area: Stationary Internal
Combustion Engines
(10 of 30)**



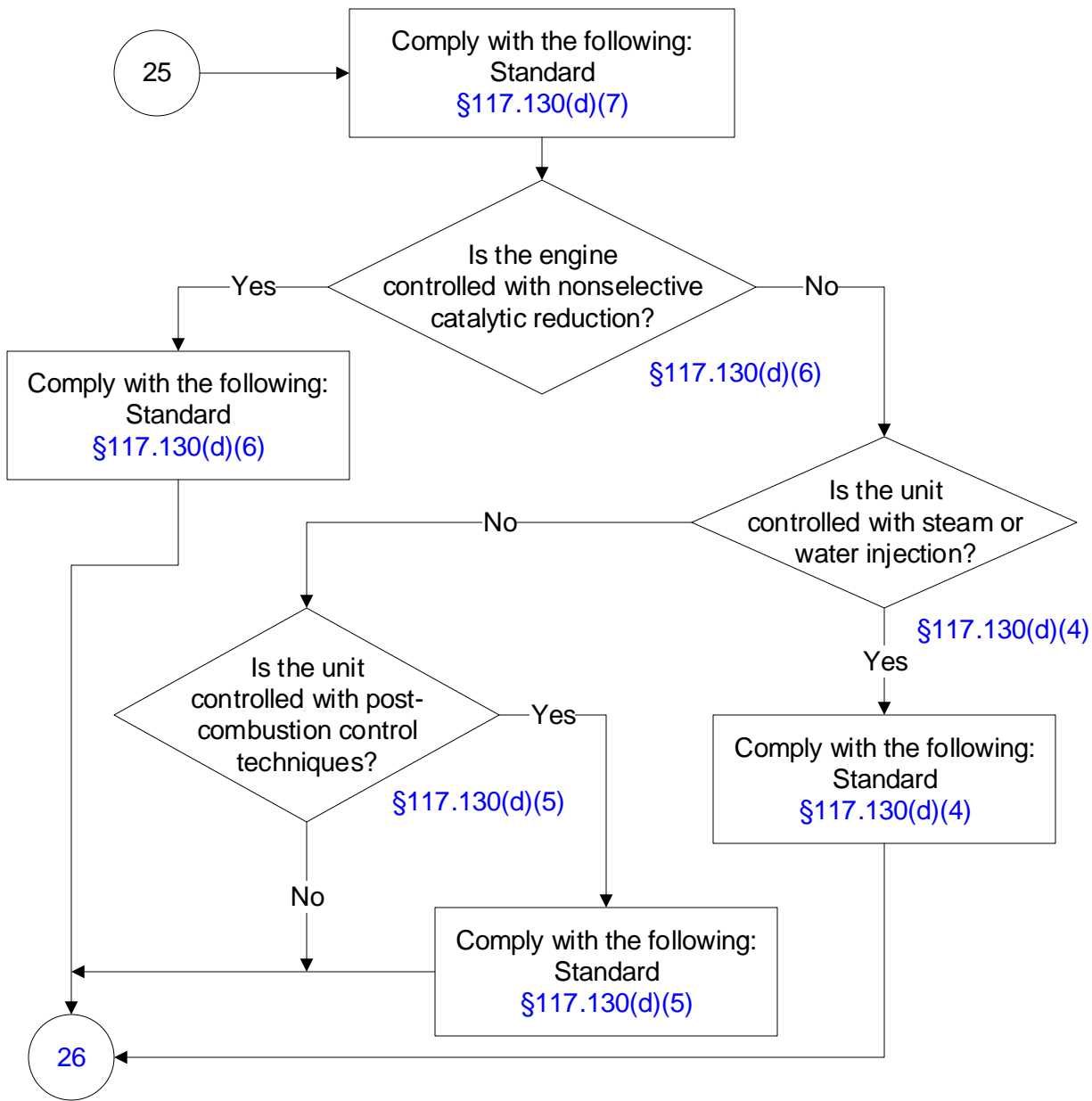
**30 TAC Chapter 117, Subchapter B, Combustion Control at Major ICI, Division 1,
Beaumont-Port Arthur Ozone Nonattainment Area: Stationary Internal
Combustion Engines
(11 of 30)**



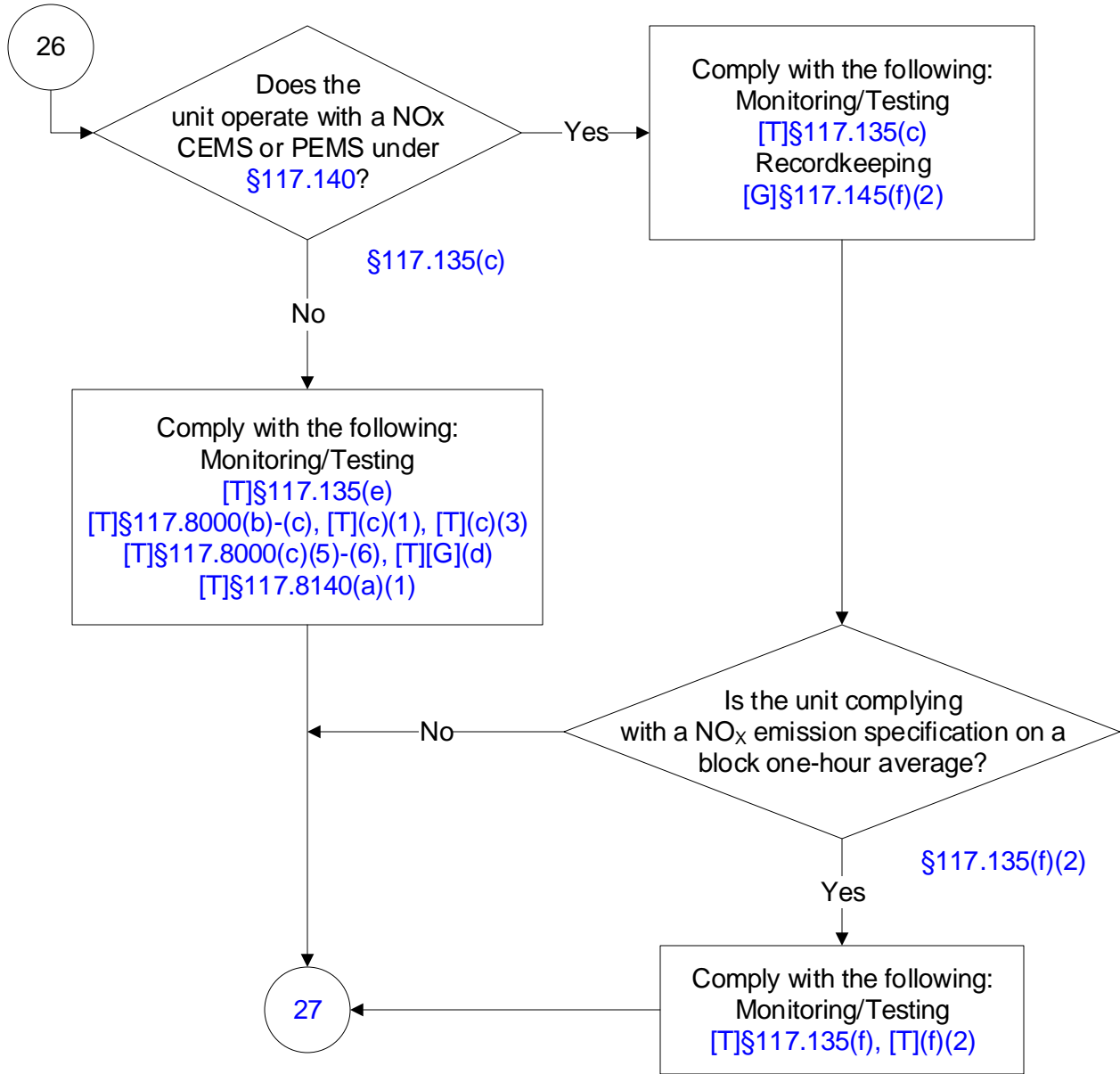
**30 TAC Chapter 117, Subchapter B, Combustion Control at Major ICI, Division 1,
Beaumont-Port Arthur Ozone Nonattainment Area: Stationary Internal
Combustion Engines
(12 of 30)**



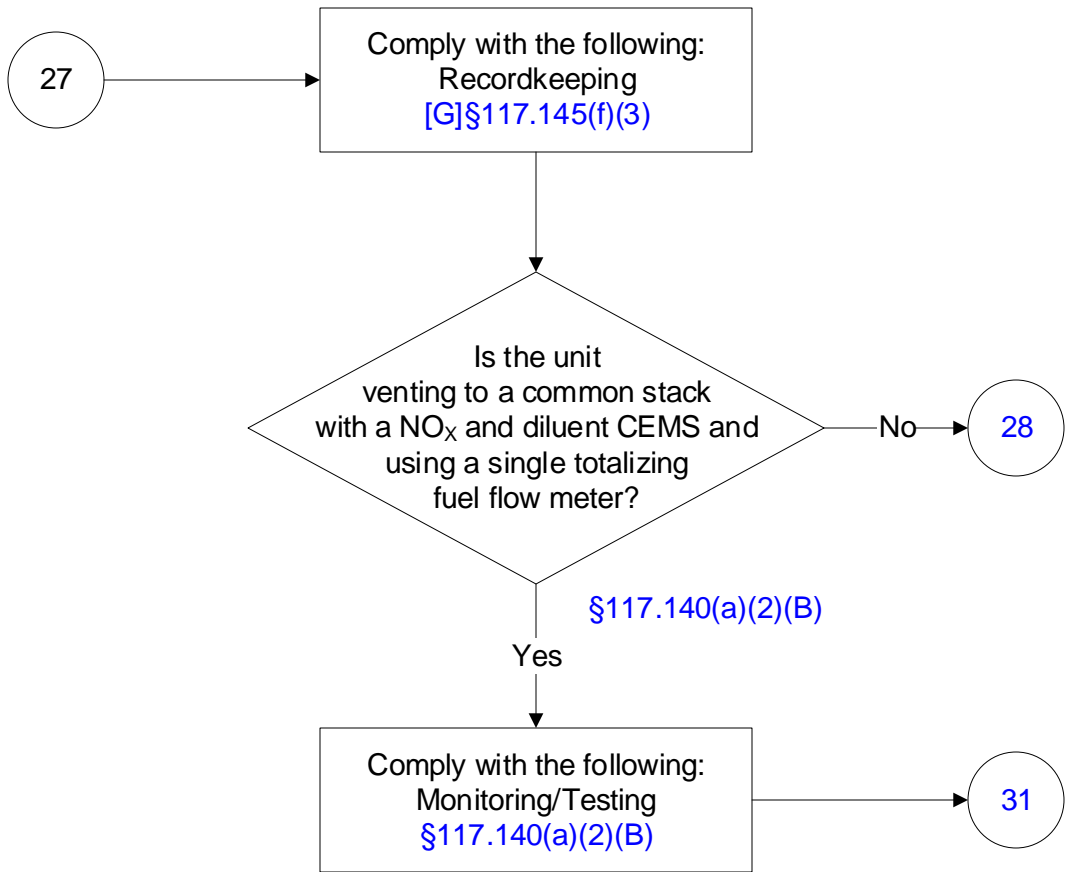
**30 TAC Chapter 117, Subchapter B, Combustion Control at Major ICI, Division 1,
Beaumont-Port Arthur Ozone Nonattainment Area: Stationary Internal
Combustion Engines
(13 of 30)**



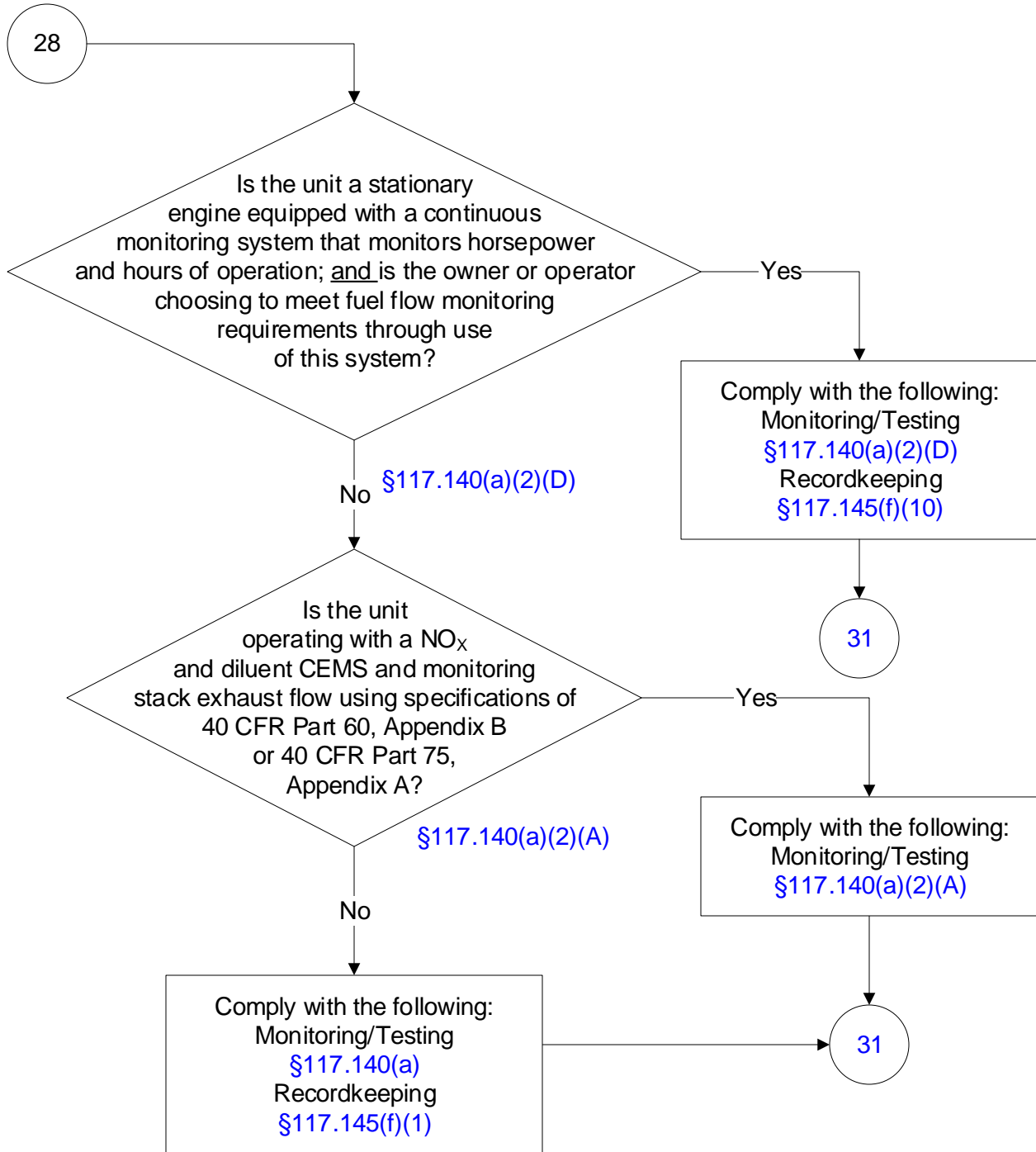
**30 TAC Chapter 117, Subchapter B, Combustion Control at Major ICI, Division 1,
Beaumont-Port Arthur Ozone Nonattainment Area: Stationary Internal
Combustion Engines
(14 of 30)**



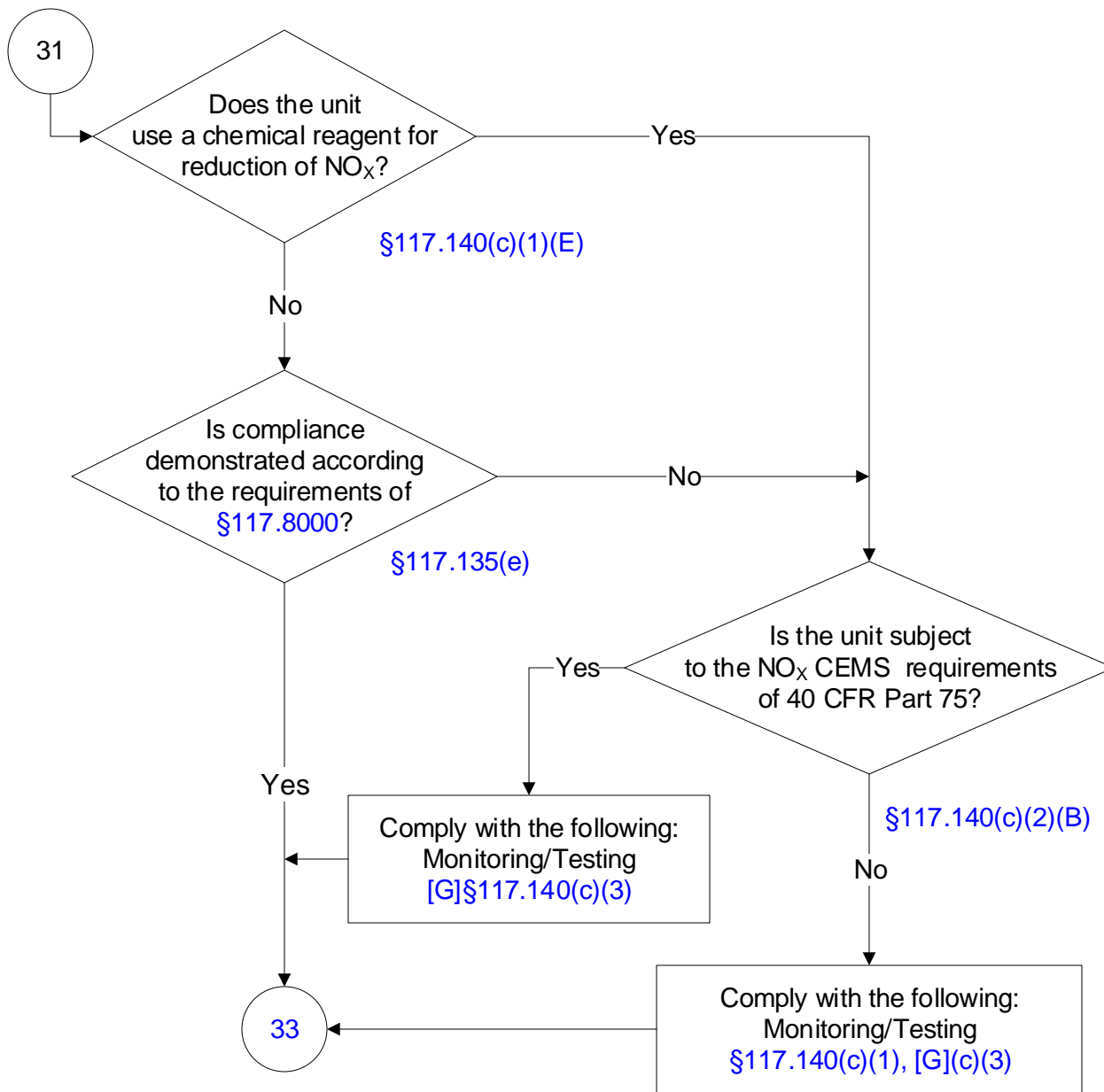
30 TAC Chapter 117, Subchapter B, Combustion Control at Major ICI, Division 1,
Beaumont-Port Arthur Ozone Nonattainment Area: Stationary Internal
Combustion Engines
(15 of 30)



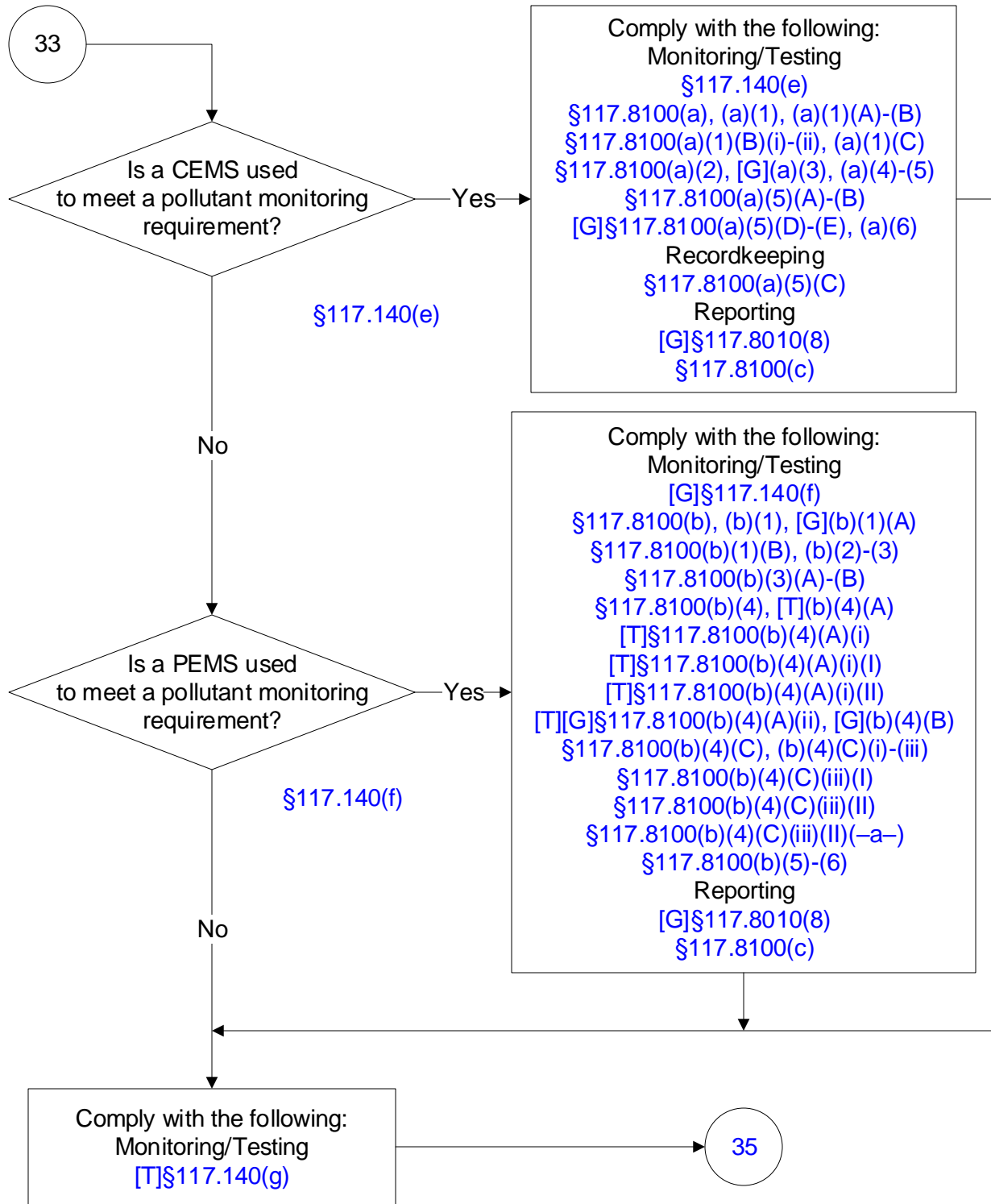
**30 TAC Chapter 117, Subchapter B, Combustion Control at Major ICI, Division 1,
Beaumont-Port Arthur Ozone Nonattainment Area: Stationary Internal
Combustion Engines
(16 of 30)**



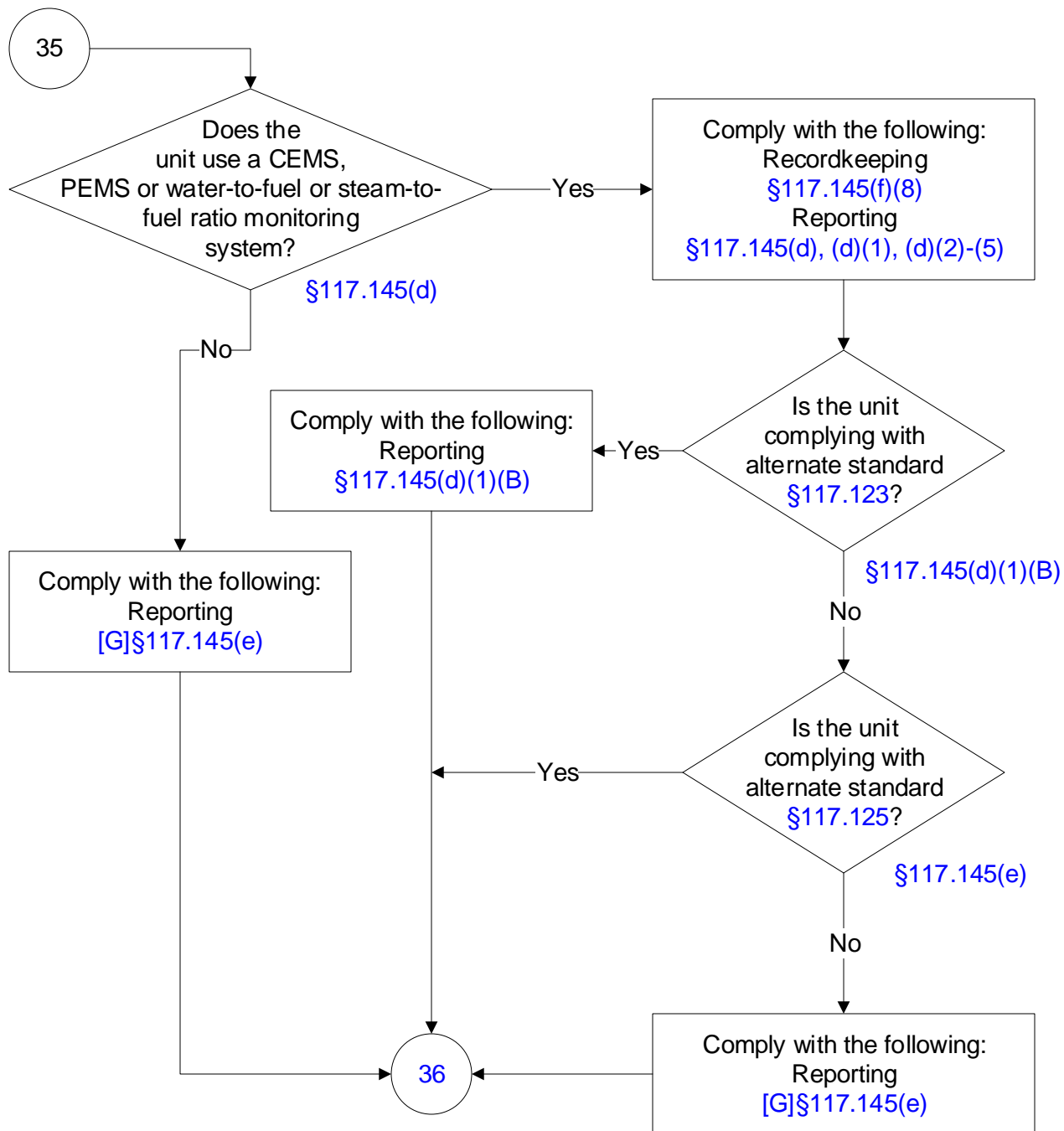
**30 TAC Chapter 117, Subchapter B, Combustion Control at Major ICI, Division 1,
Beaumont-Port Arthur Ozone Nonattainment Area: Stationary Internal
Combustion Engines
(17 of 30)**



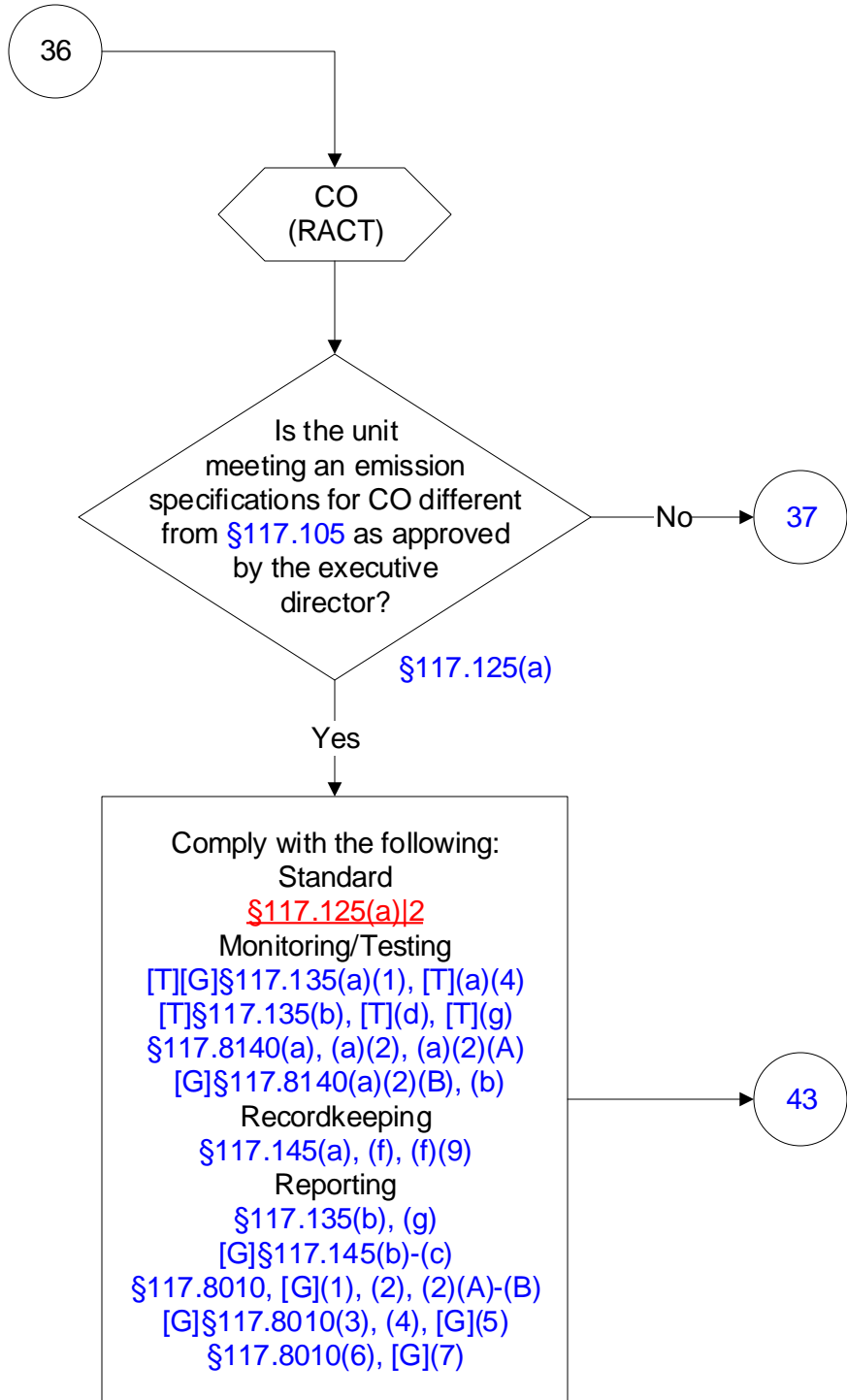
**30 TAC Chapter 117, Subchapter B, Combustion Control at Major ICI, Division 1,
Beaumont-Port Arthur Ozone Nonattainment Area: Stationary Internal
Combustion Engines
(18 of 30)**



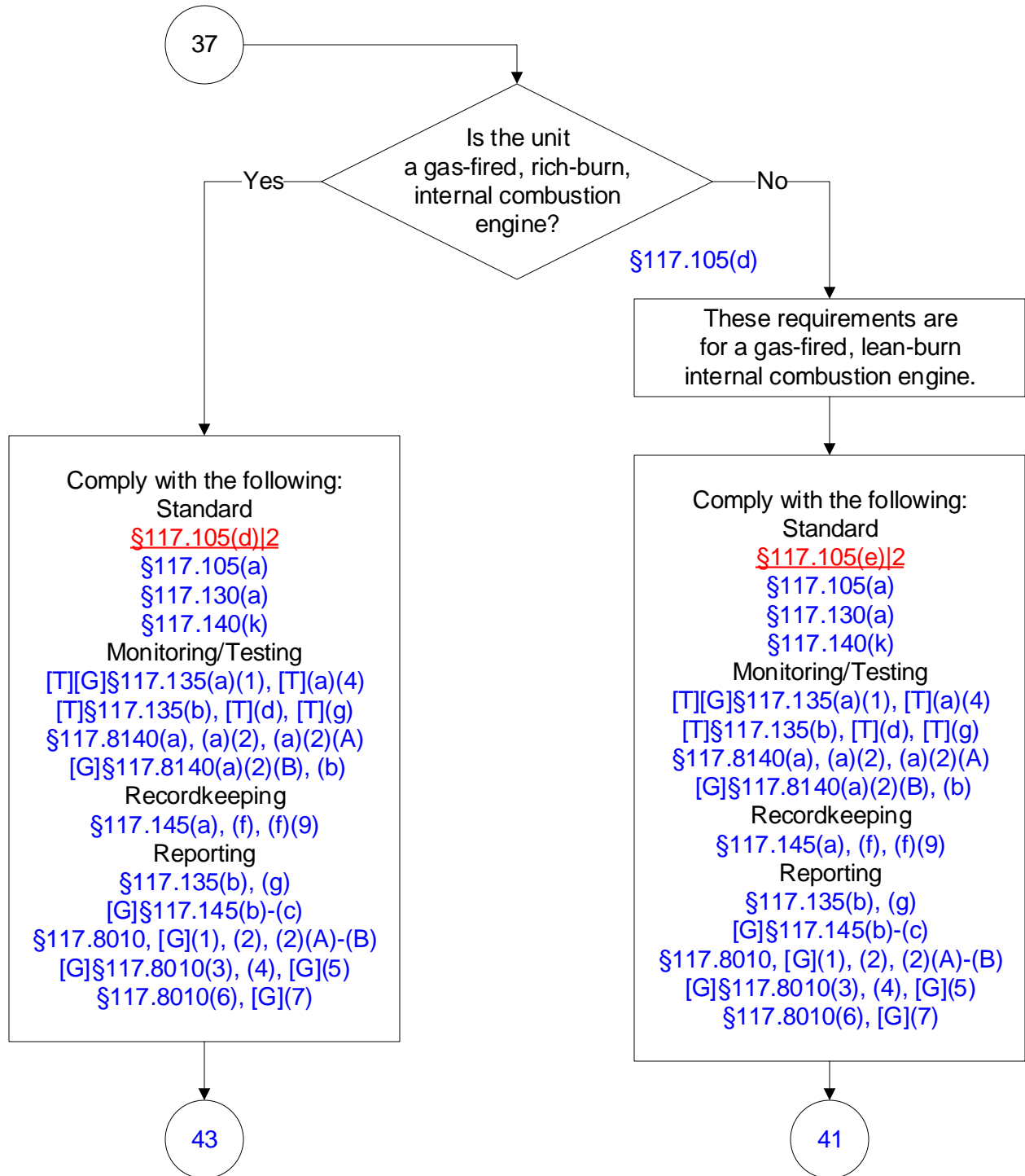
**30 TAC Chapter 117, Subchapter B, Combustion Control at Major ICI, Division 1,
Beaumont-Port Arthur Ozone Nonattainment Area: Stationary Internal
Combustion Engines
(19 of 30)**



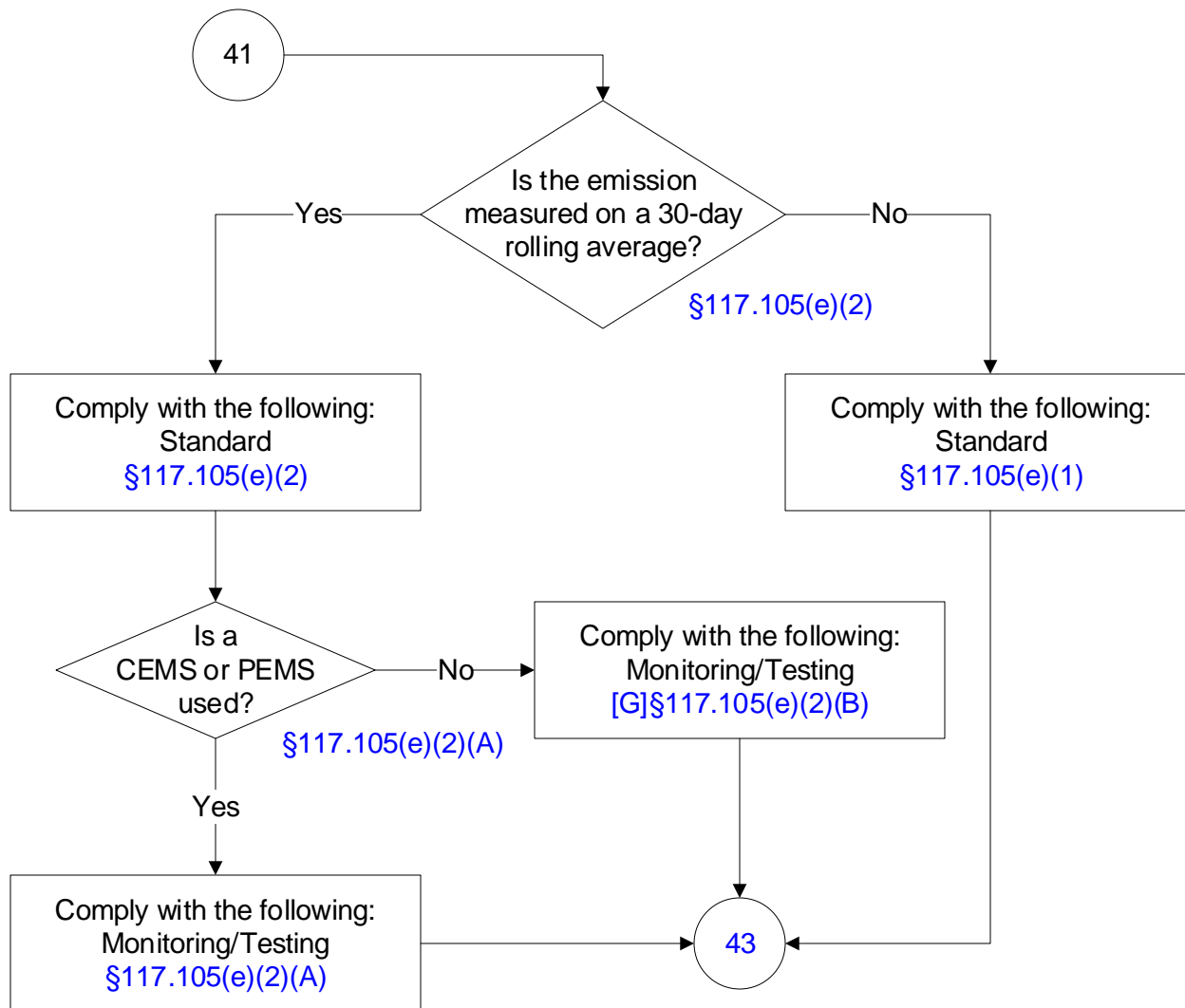
**30 TAC Chapter 117, Subchapter B, Combustion Control at Major ICI, Division 1,
Beaumont-Port Arthur Ozone Nonattainment Area: Stationary Internal
Combustion Engines
(20 of 30)**



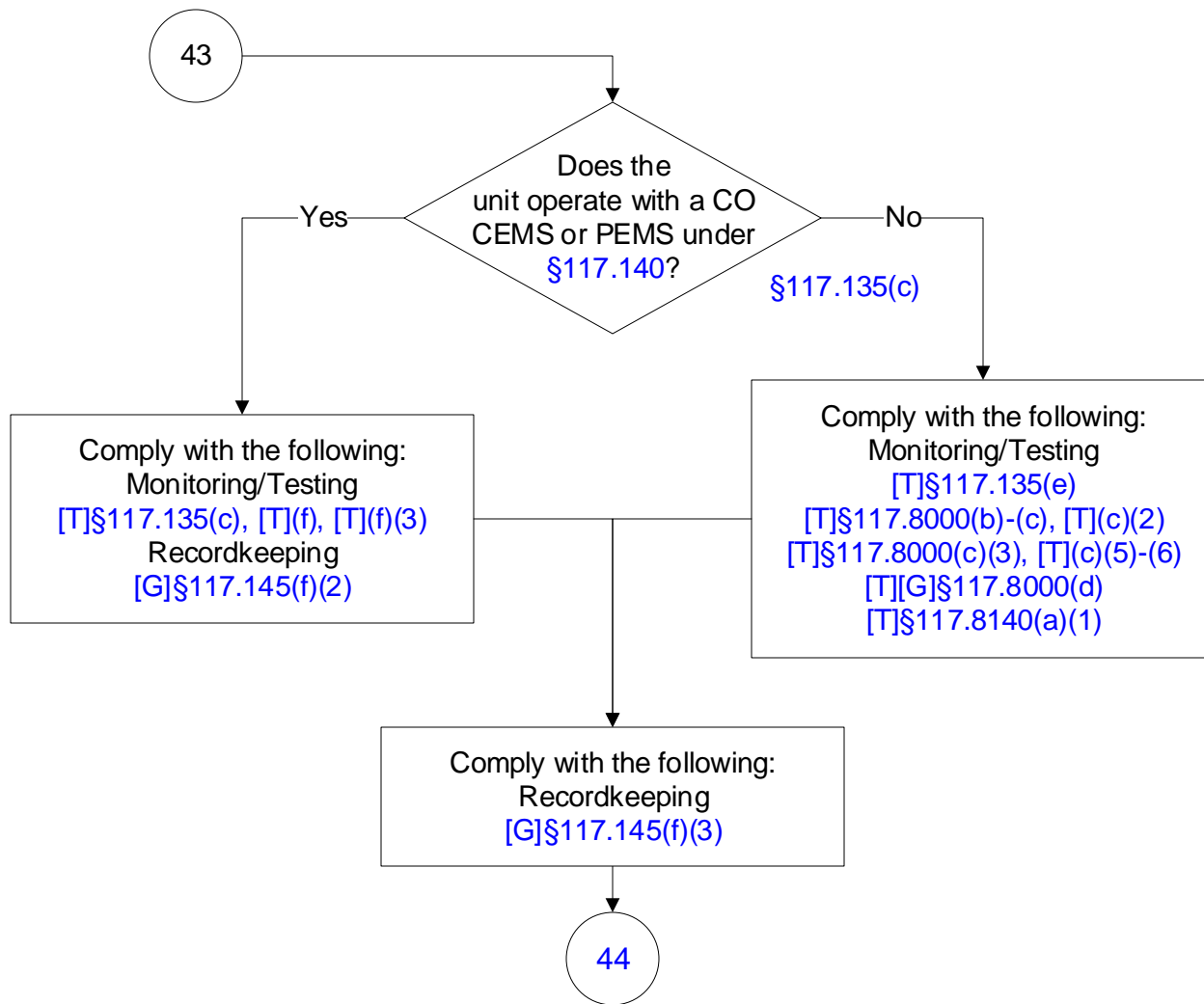
**30 TAC Chapter 117, Subchapter B, Combustion Control at Major ICI, Division 1,
Beaumont-Port Arthur Ozone Nonattainment Area: Stationary Internal
Combustion Engines
(21 of 30)**



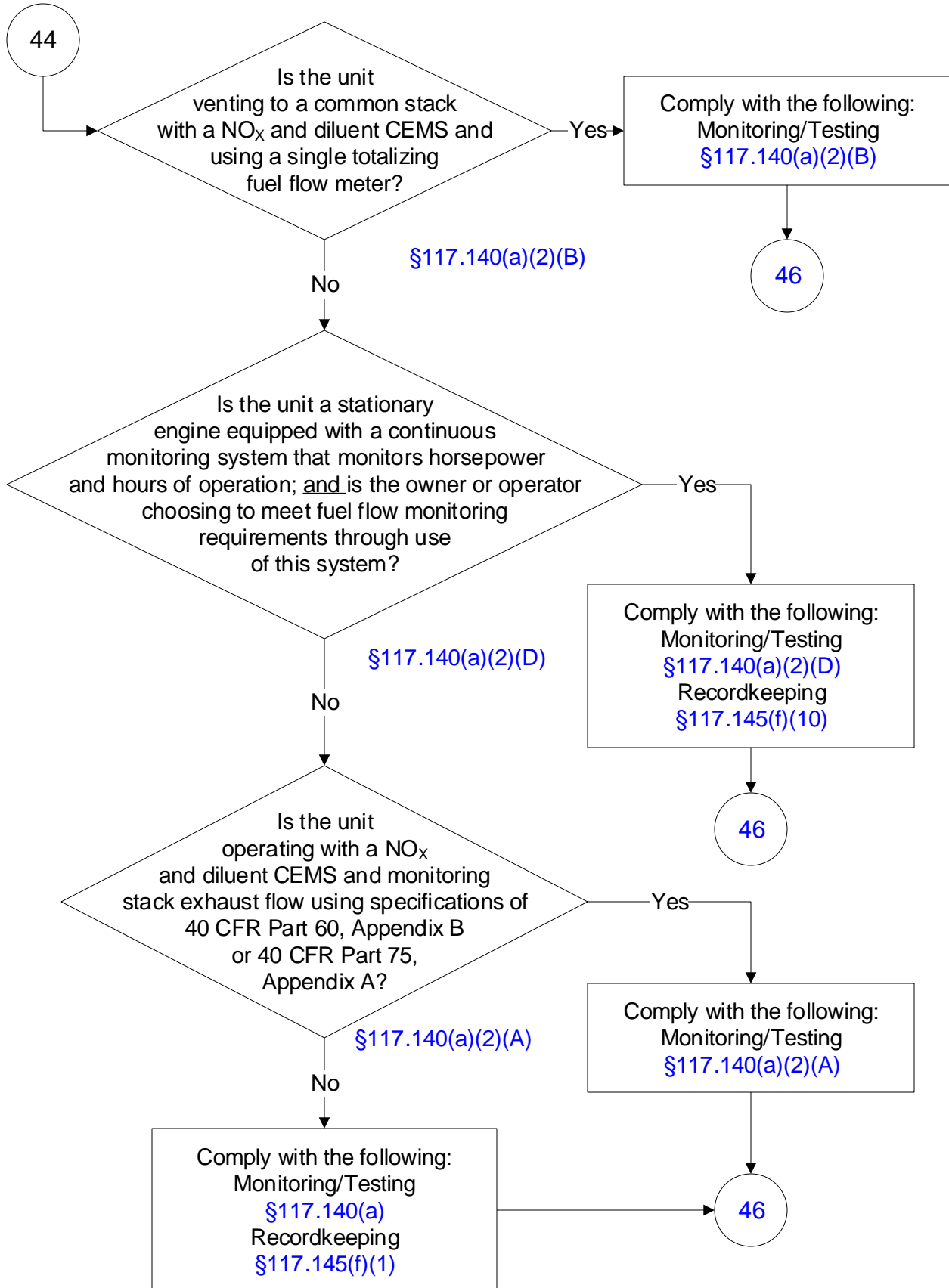
30 TAC Chapter 117, Subchapter B, Combustion Control at Major ICI, Division 1,
Beaumont-Port Arthur Ozone Nonattainment Area: Stationary Internal
Combustion Engines
(22 of 30)



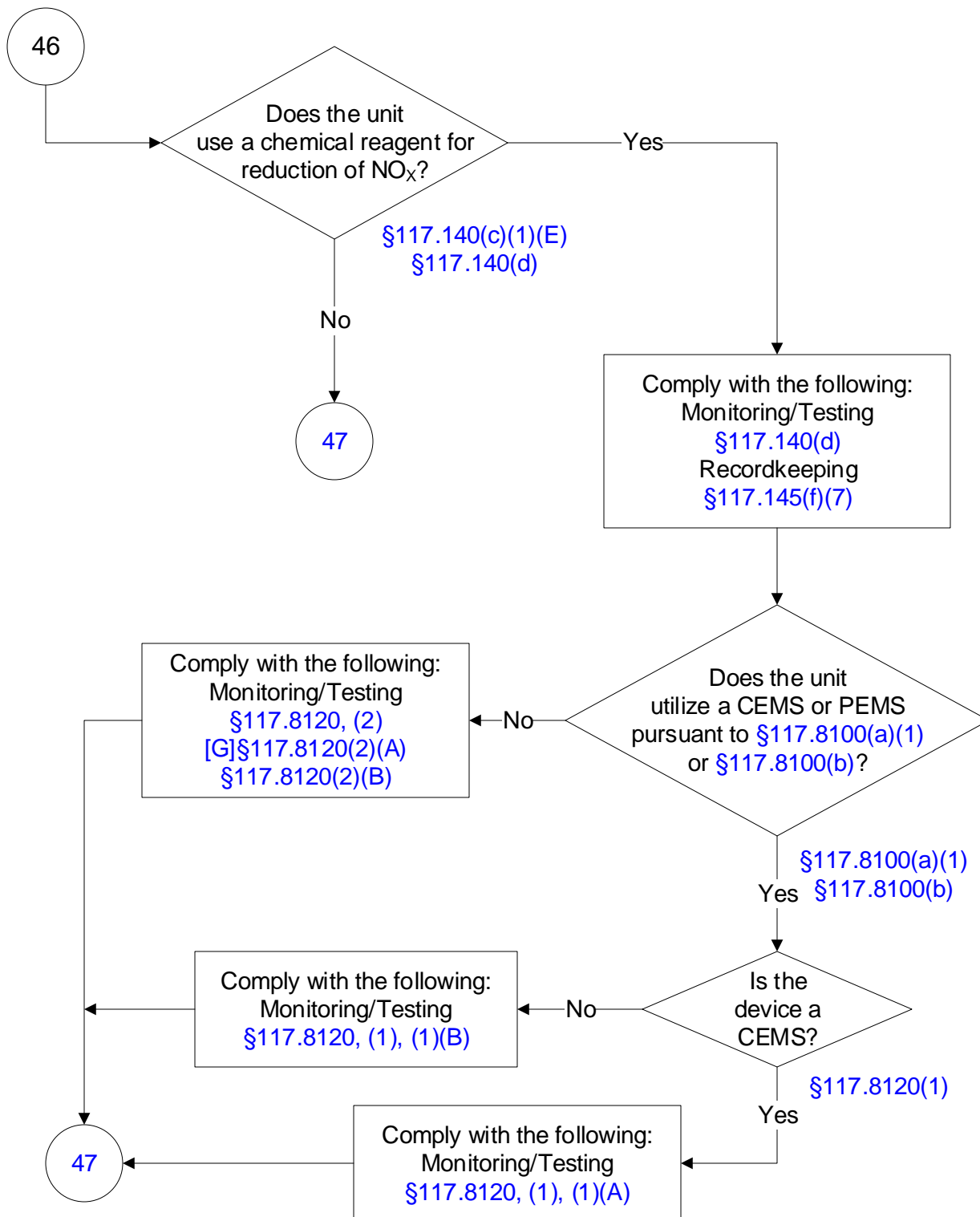
30 TAC Chapter 117, Subchapter B, Combustion Control at Major ICI, Division 1,
Beaumont-Port Arthur Ozone Nonattainment Area: Stationary Internal
Combustion Engines
(23 of 30)



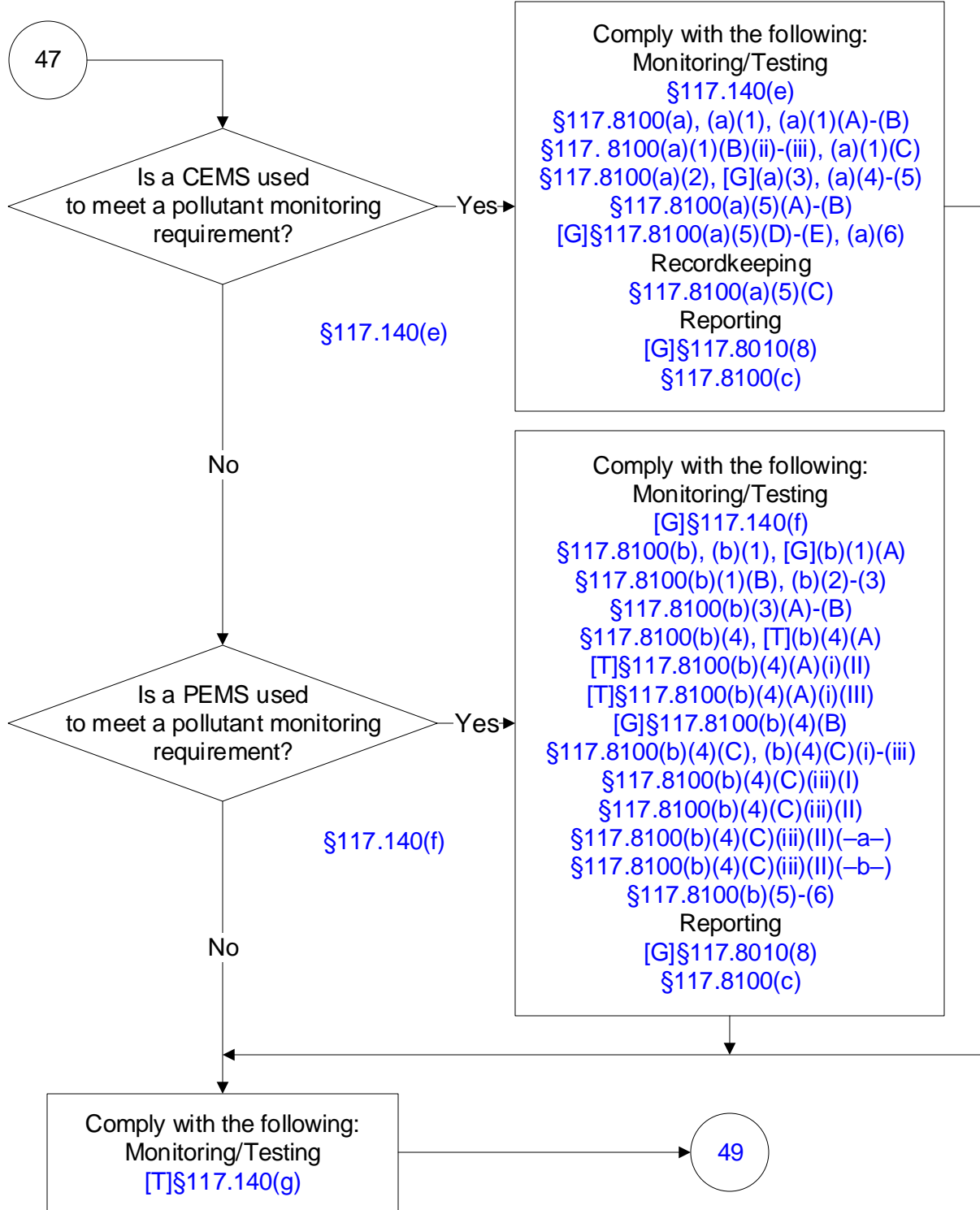
**30 TAC Chapter 117, Subchapter B, Combustion Control at Major ICI, Division 1,
Beaumont-Port Arthur Ozone Nonattainment Area: Stationary Internal
Combustion Engines
(24 of 30)**



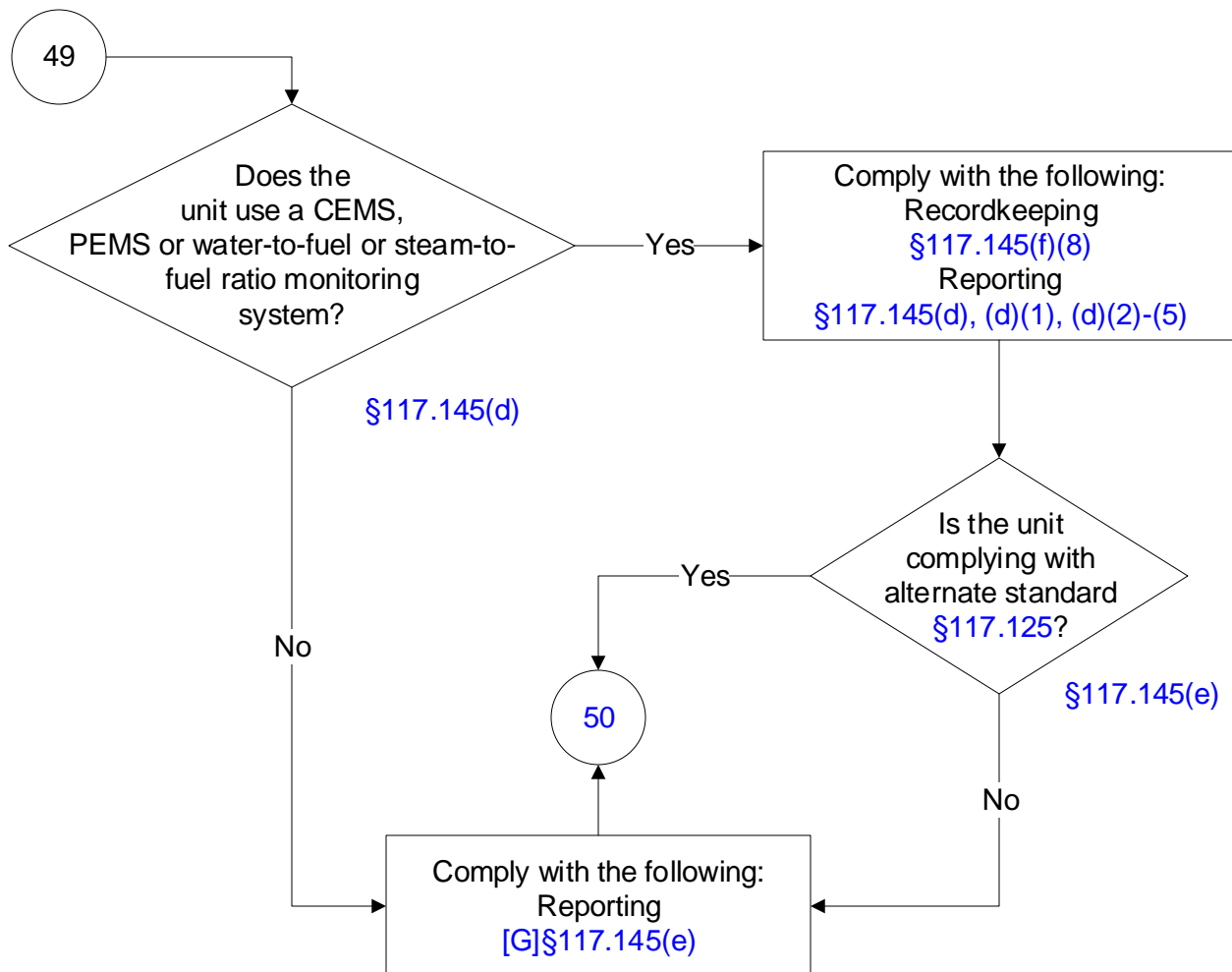
**30 TAC Chapter 117, Subchapter B, Combustion Control at Major ICI, Division 1,
Beaumont-Port Arthur Ozone Nonattainment Area: Stationary Internal
Combustion Engines
(25 of 30)**



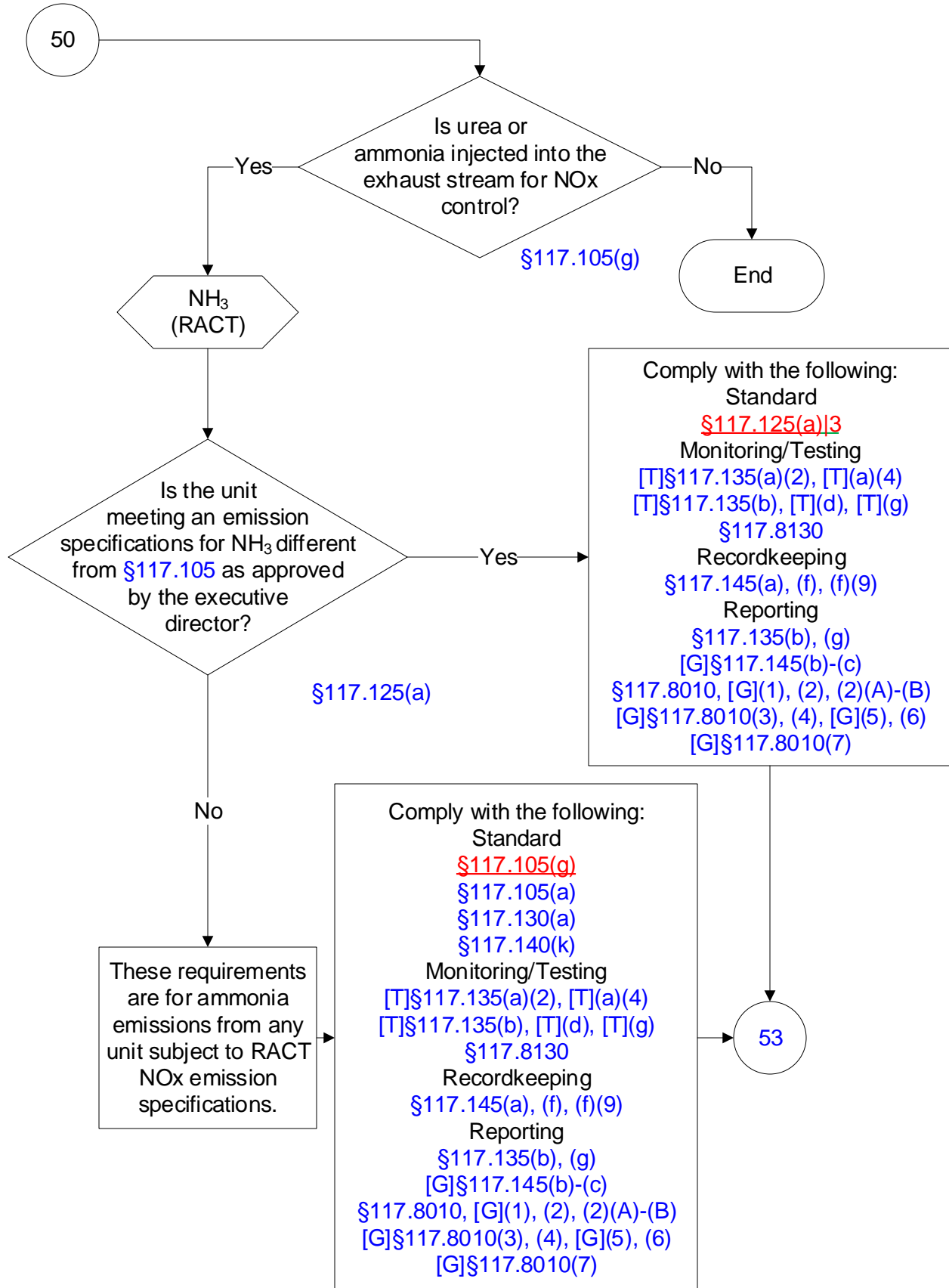
**30 TAC Chapter 117, Subchapter B, Combustion Control at Major ICI, Division 1,
Beaumont-Port Arthur Ozone Nonattainment Area: Stationary Internal
Combustion Engines
(26 of 30)**



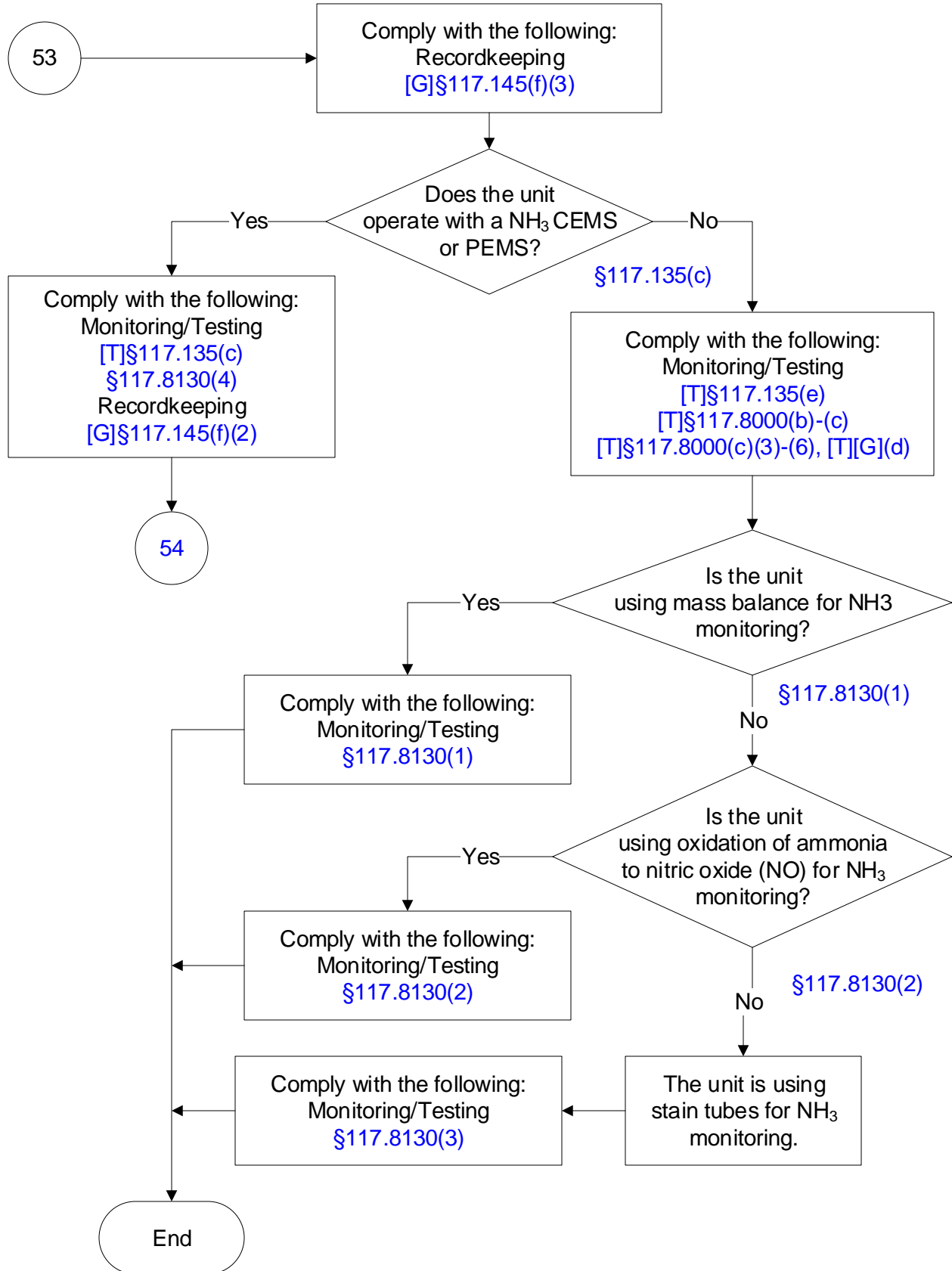
30 TAC Chapter 117, Subchapter B, Combustion Control at Major ICI, Division 1,
Beaumont-Port Arthur Ozone Nonattainment Area: Stationary Internal
Combustion Engines
(27 of 30)



**30 TAC Chapter 117, Subchapter B, Combustion Control at Major ICI, Division 1,
Beaumont-Port Arthur Ozone Nonattainment Area: Stationary Internal
Combustion Engines
(28 of 30)**



**30 TAC Chapter 117, Subchapter B, Combustion Control at Major ICI, Division 1,
Beaumont-Port Arthur Ozone Nonattainment Area: Stationary Internal
Combustion Engines
(29 of 30)**



**30 TAC Chapter 117, Subchapter B, Combustion Control at Major ICI, Division 1,
Beaumont-Port Arthur Ozone Nonattainment Area: Stationary Internal
Combustion Engines
(30 of 30)**

