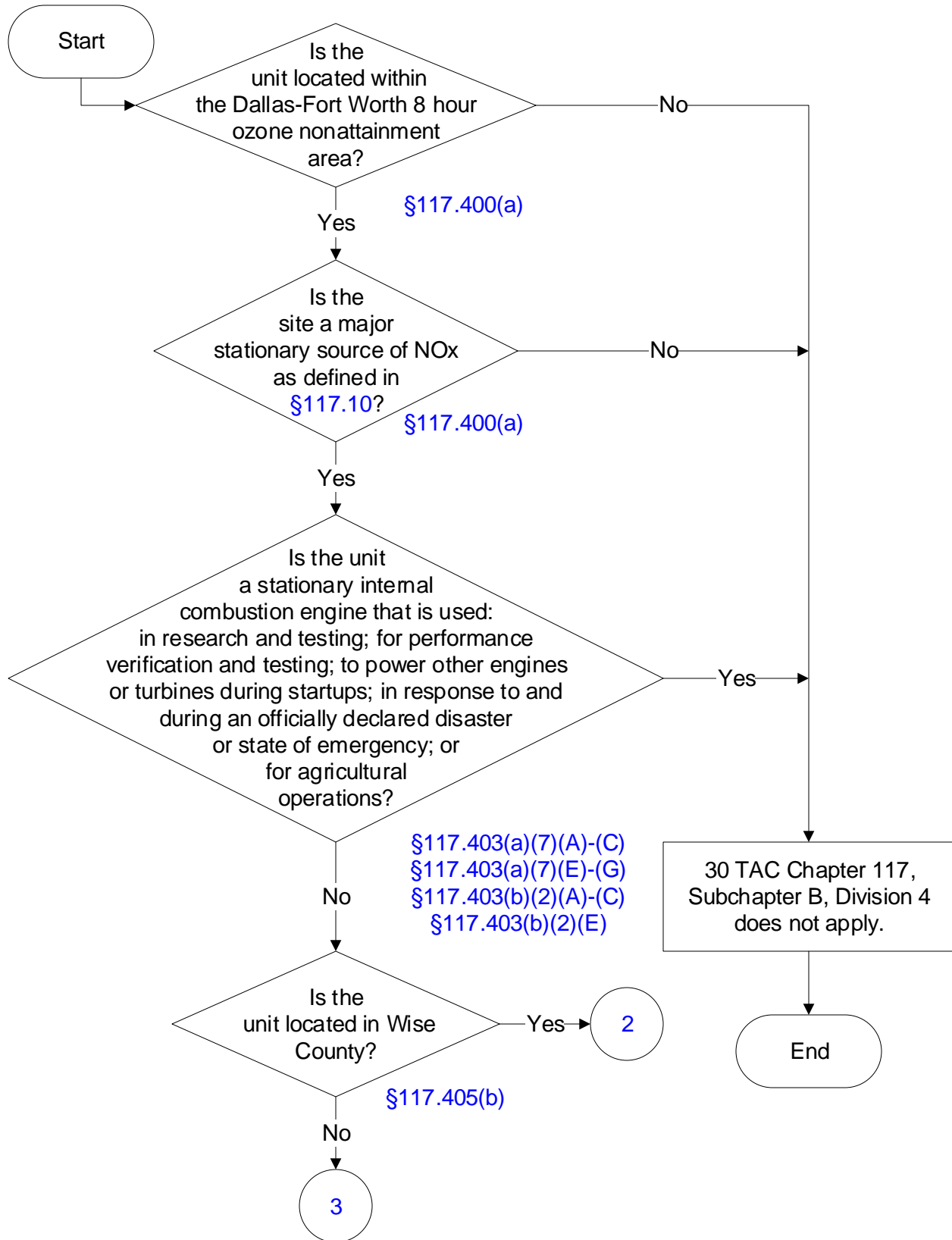


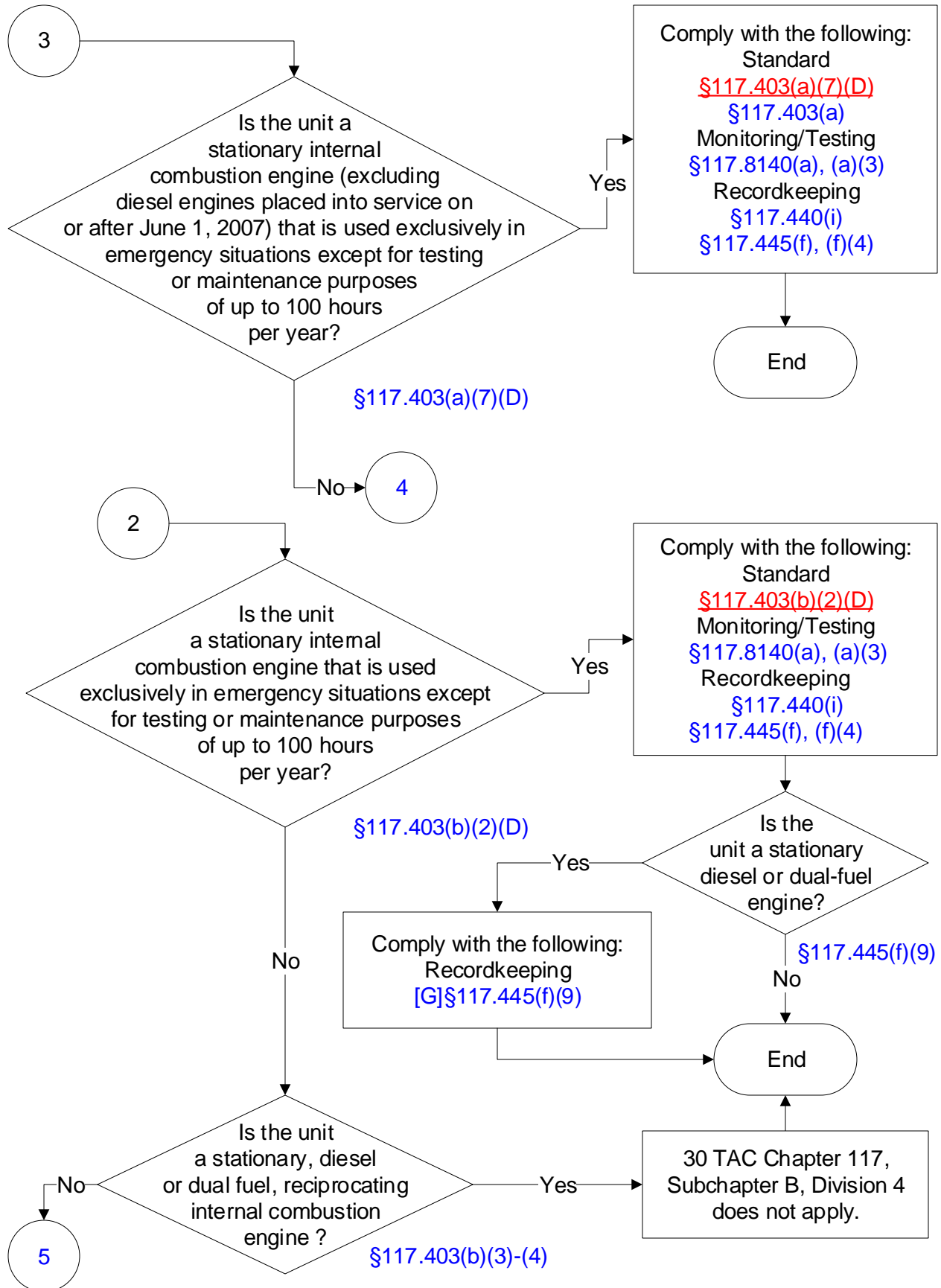


Below is the flowchart describing 30 TAC 117, DFW Ozone Nonattainment Area: Engines.  
For the text and the statute/rule, please go to  
**30 TAC 117, Subchapter B, Division 4**  
(1 of 38)



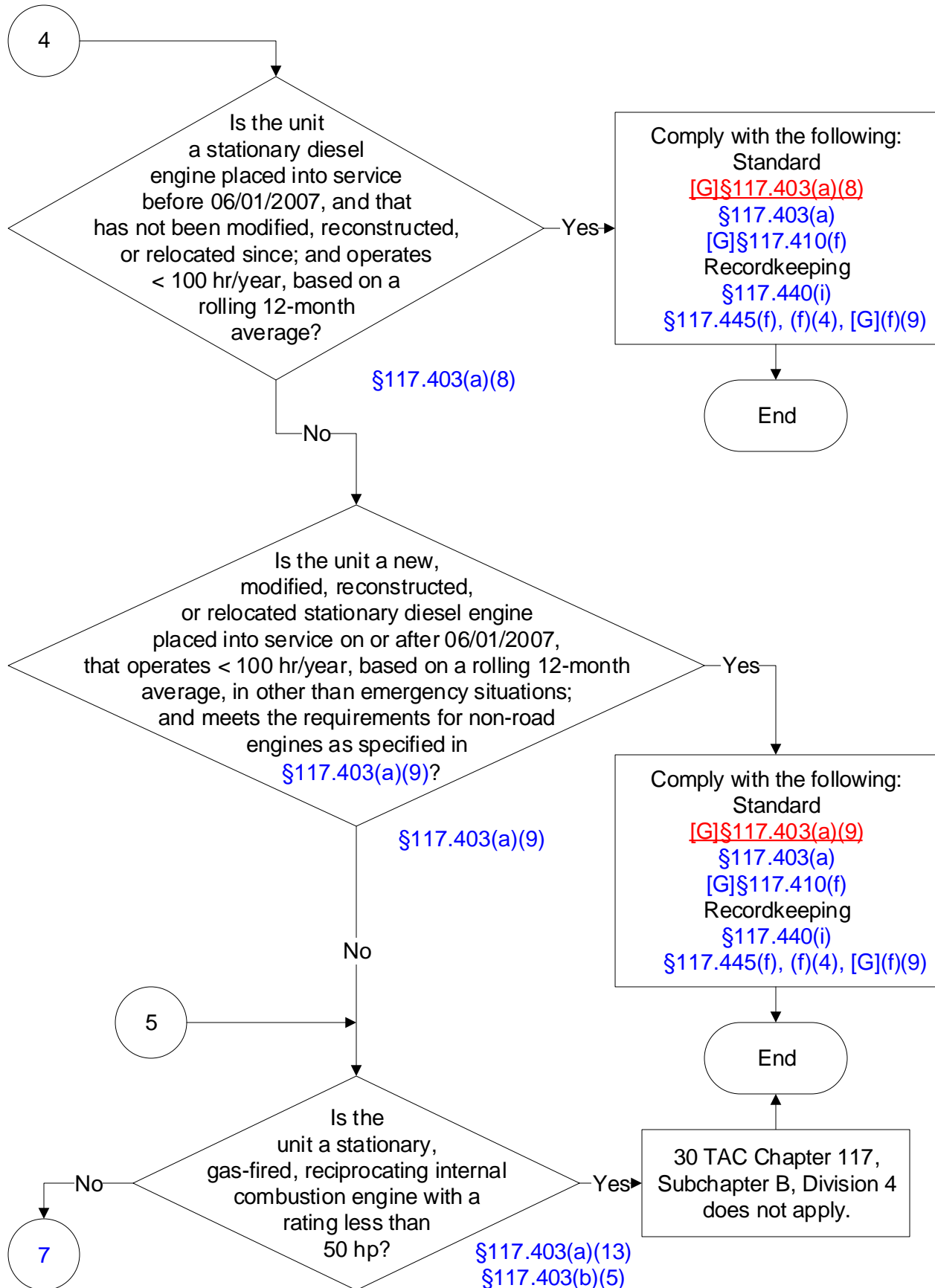
# 30 TAC Chapter 117, DFW Ozone Nonattainment Area: Stationary Internal Combustion Engines

(2 of 38)



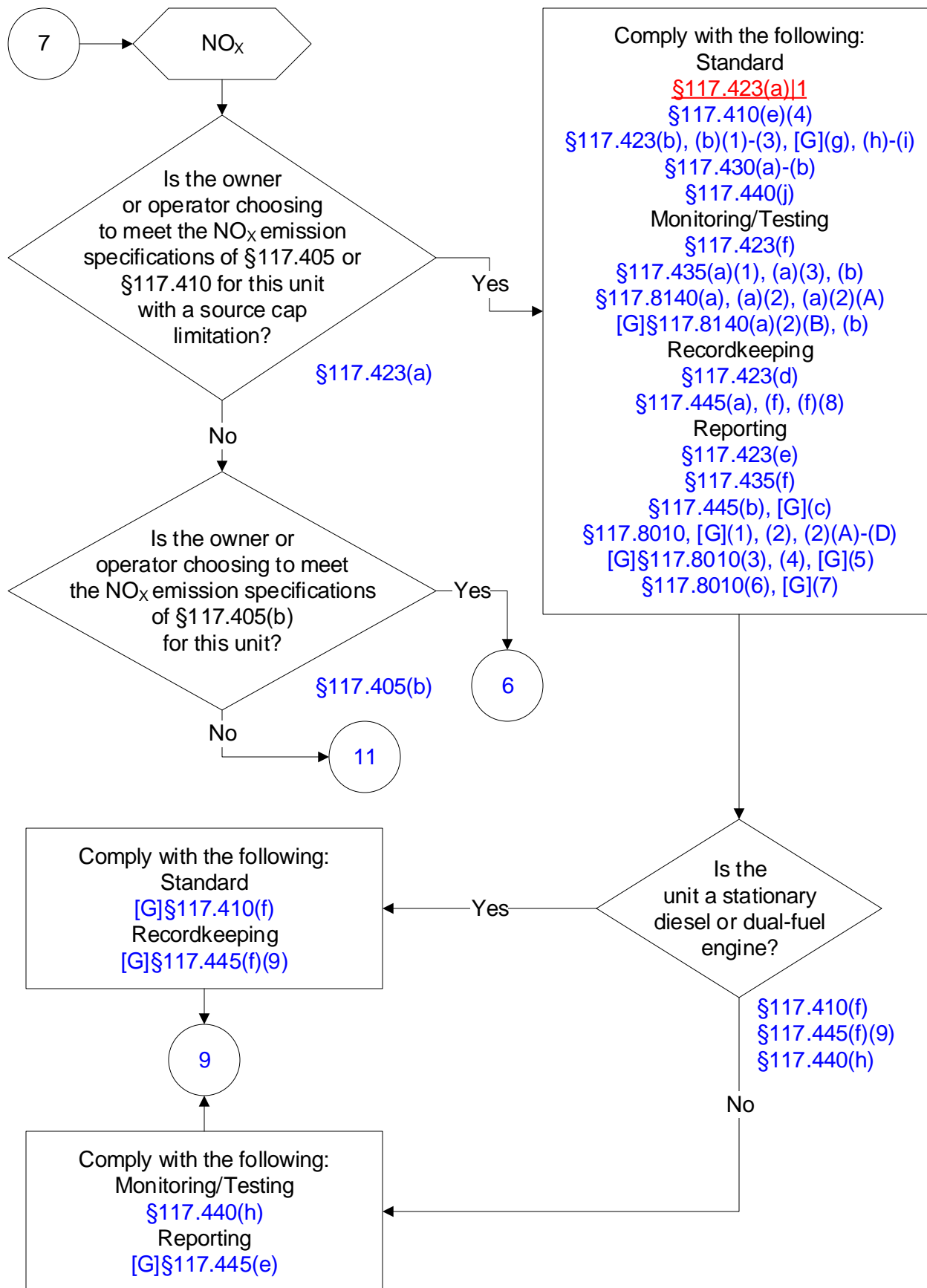
# 30 TAC Chapter 117, DFW Ozone Nonattainment Area: Stationary Internal Combustion Engines

(3 of 38)

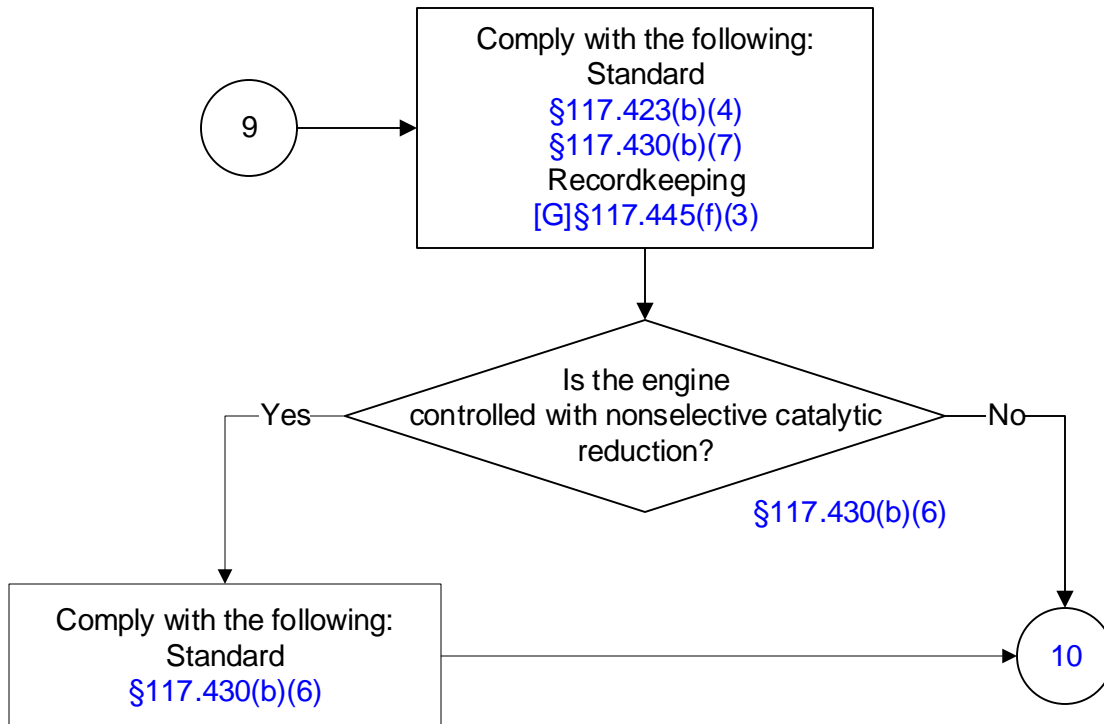


# 30 TAC Chapter 117, DFW Ozone Nonattainment Area: Stationary Internal Combustion Engines

(4 of 38)

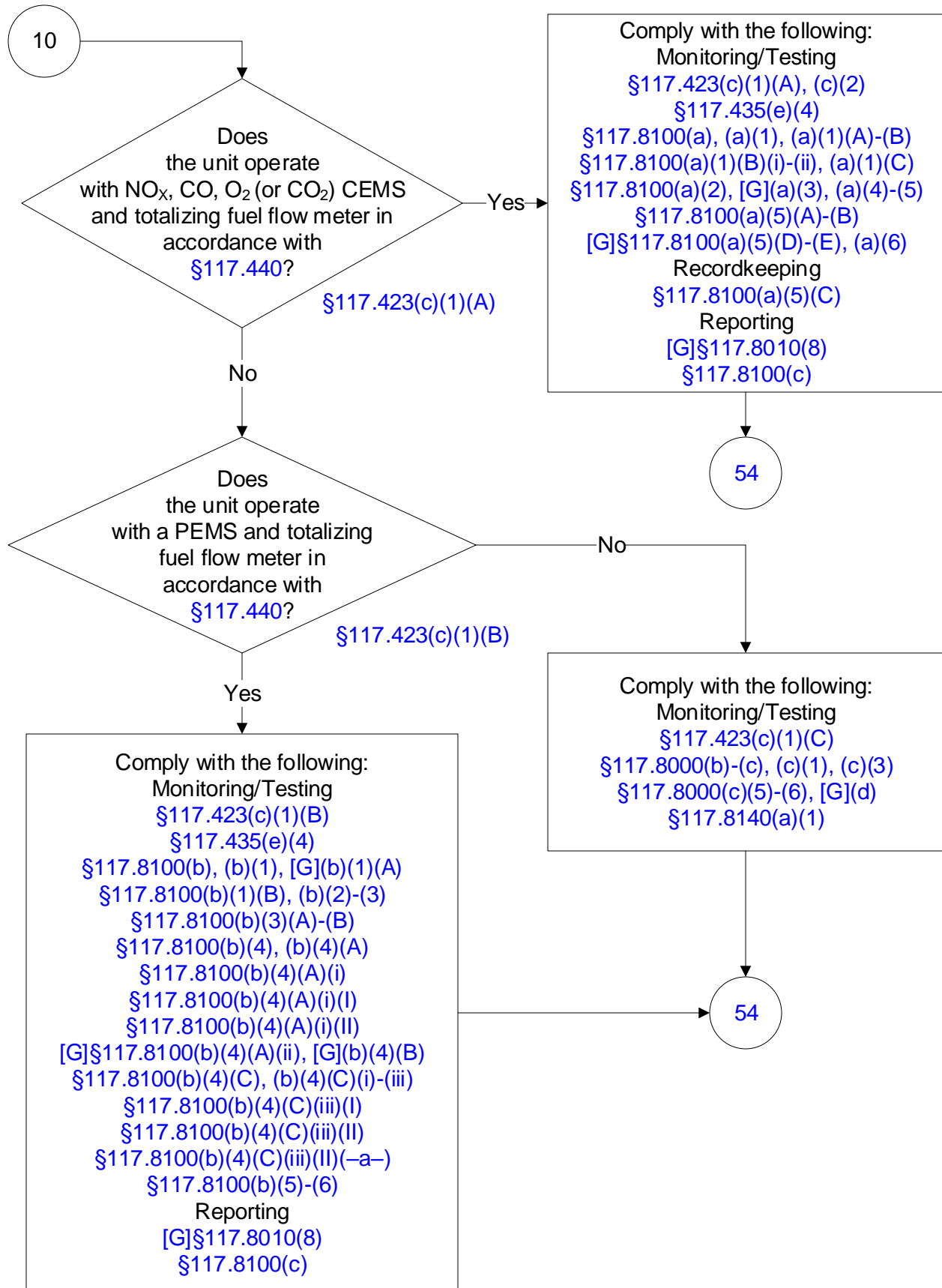


**30 TAC Chapter 117, DFW Ozone Nonattainment Area:  
Stationary Internal Combustion Engines  
(5 of 38)**



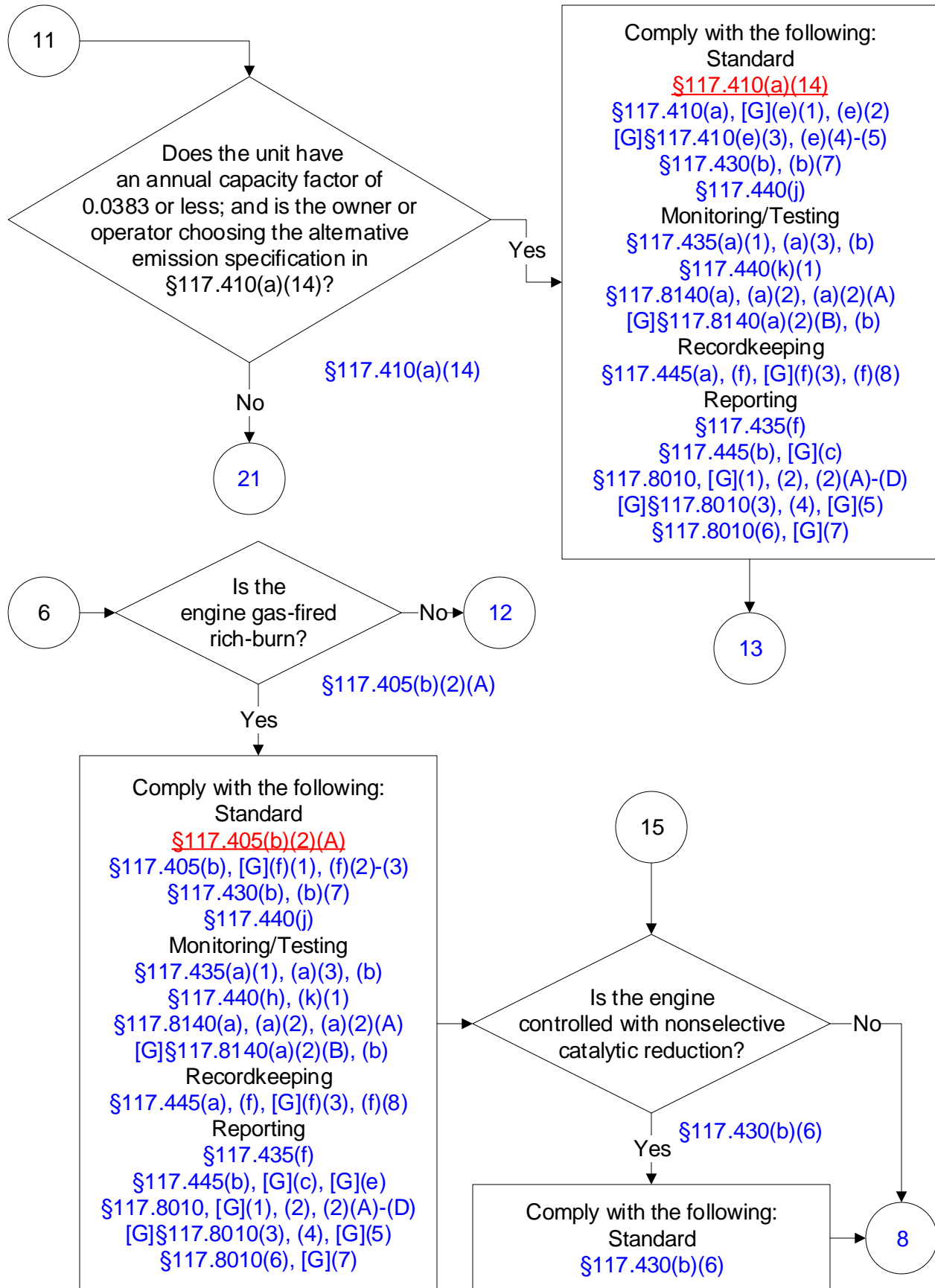
# 30 TAC Chapter 117, DFW Ozone Nonattainment Area: Stationary Internal Combustion Engines

(6 of 38)



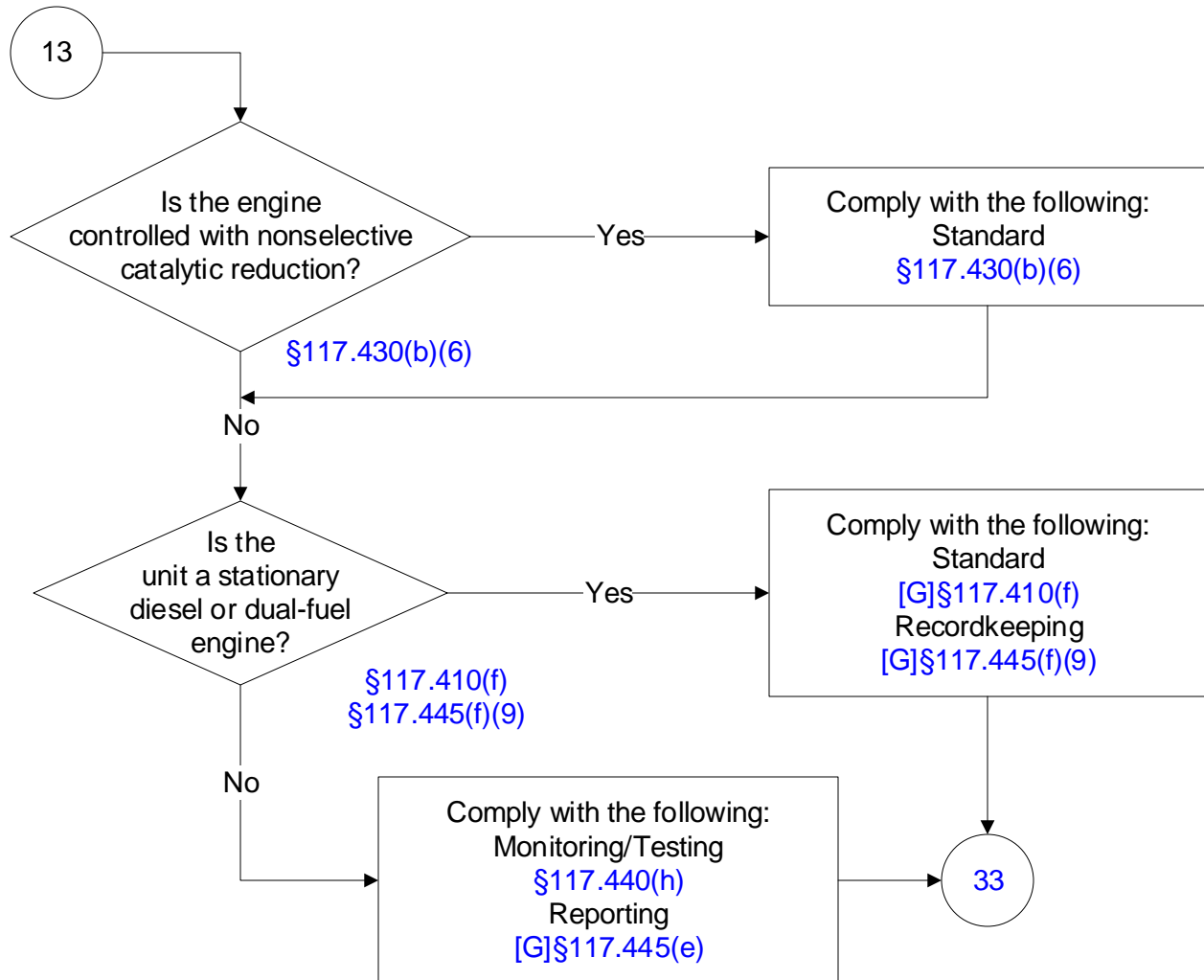
# 30 TAC Chapter 117, DFW Ozone Nonattainment Area: Stationary Internal Combustion Engines

(7 of 38)



# 30 TAC Chapter 117, DFW Ozone Nonattainment Area: Stationary Internal Combustion Engines

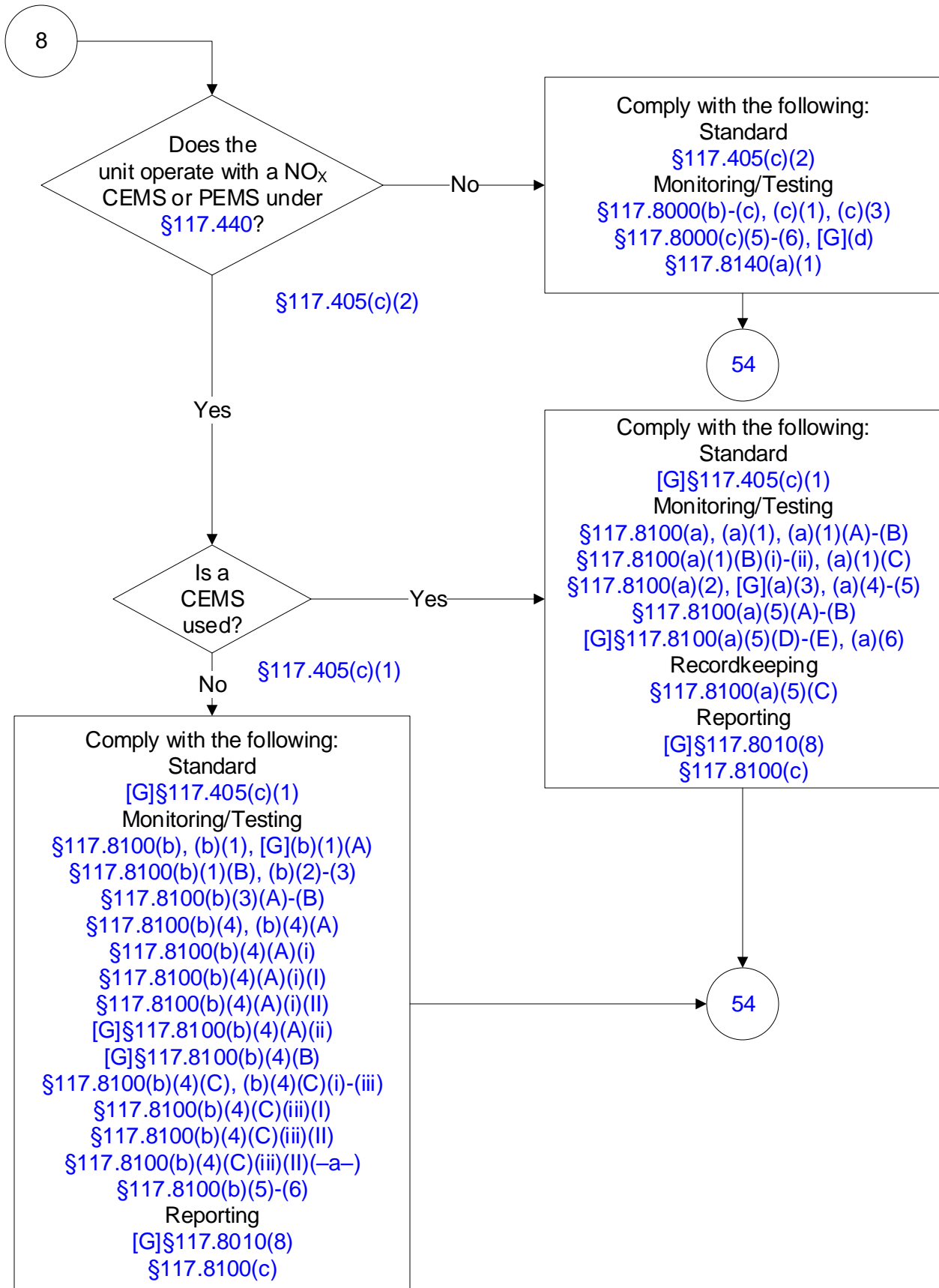
(8 of 38)





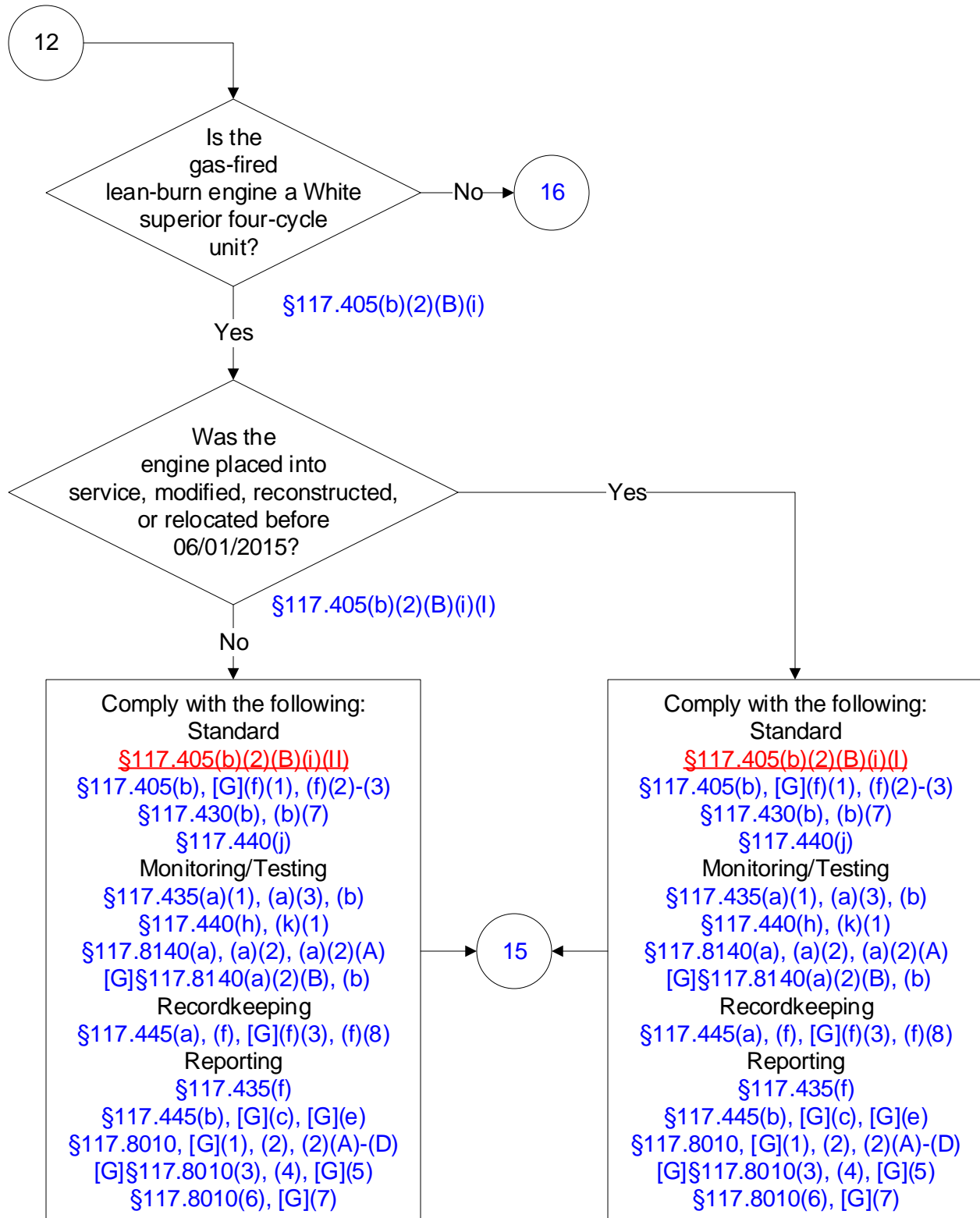
# 30 TAC Chapter 117, DFW Ozone Nonattainment Area: Stationary Internal Combustion Engines

(9 of 38)



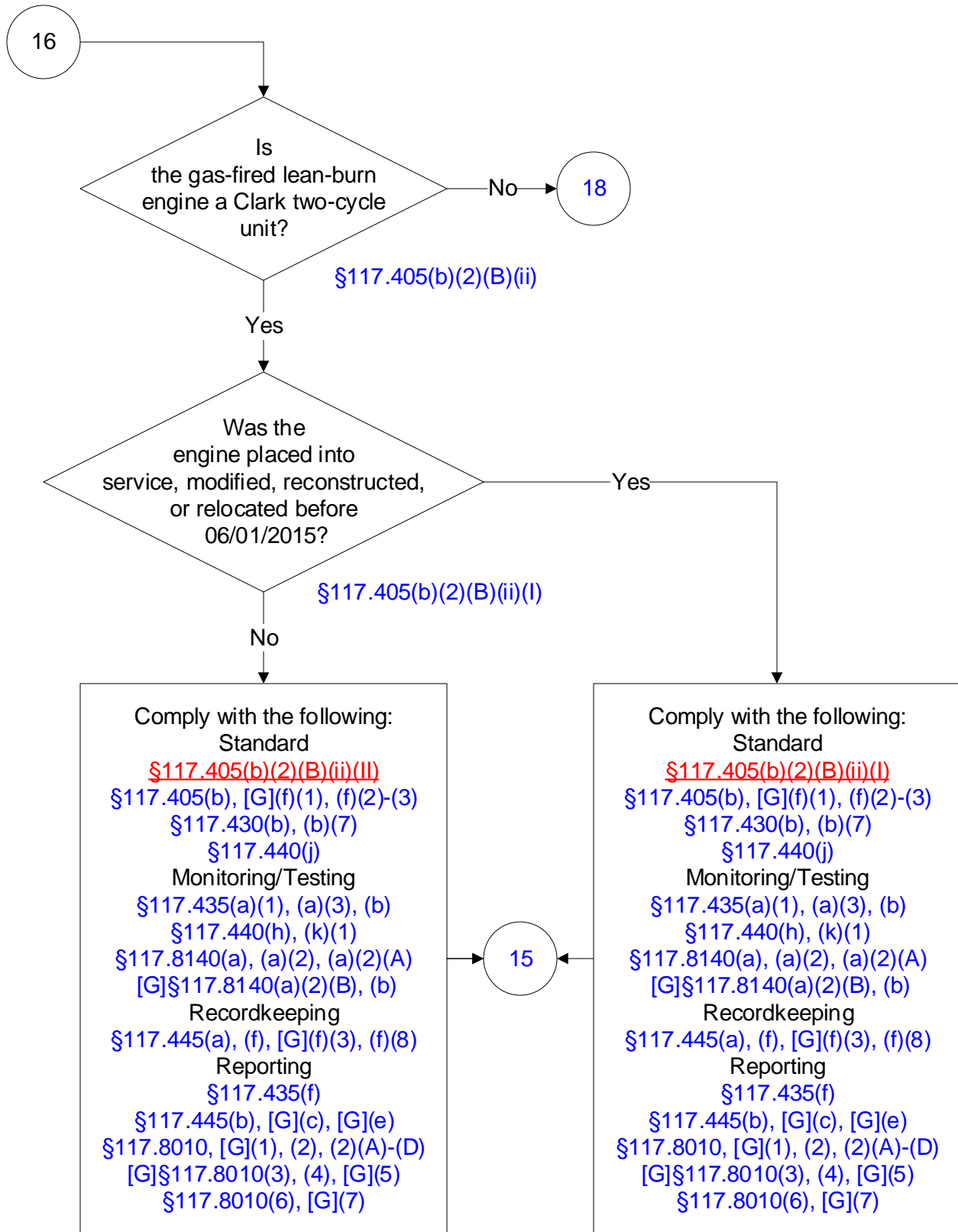
# 30 TAC Chapter 117, DFW Ozone Nonattainment Area: Stationary Internal Combustion Engines

(10 of 38)



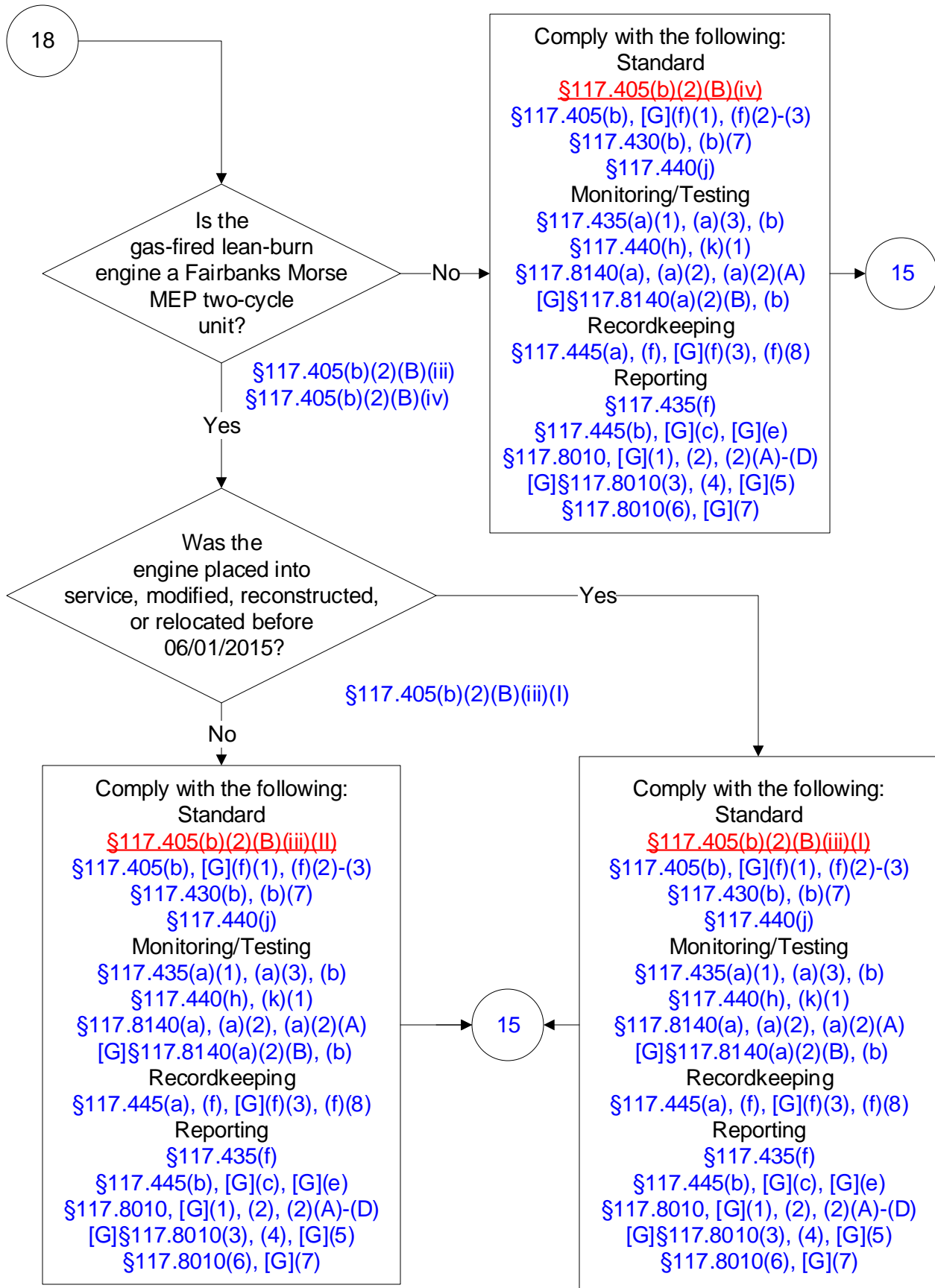
# 30 TAC Chapter 117, DFW Ozone Nonattainment Area: Stationary Internal Combustion Engines

(11 of 38)



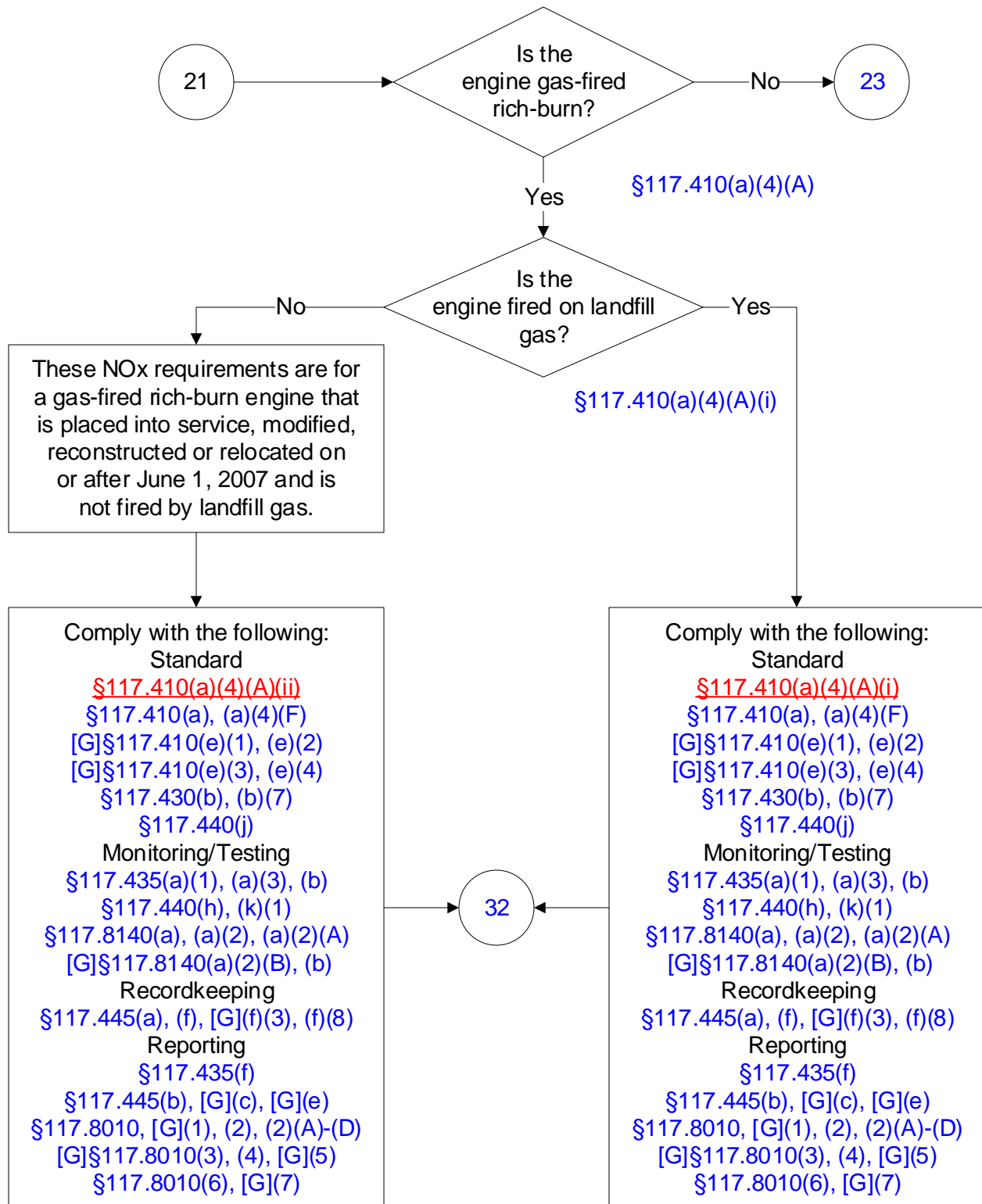
# 30 TAC Chapter 117, DFW Ozone Nonattainment Area: Stationary Internal Combustion Engines

(12 of 38)



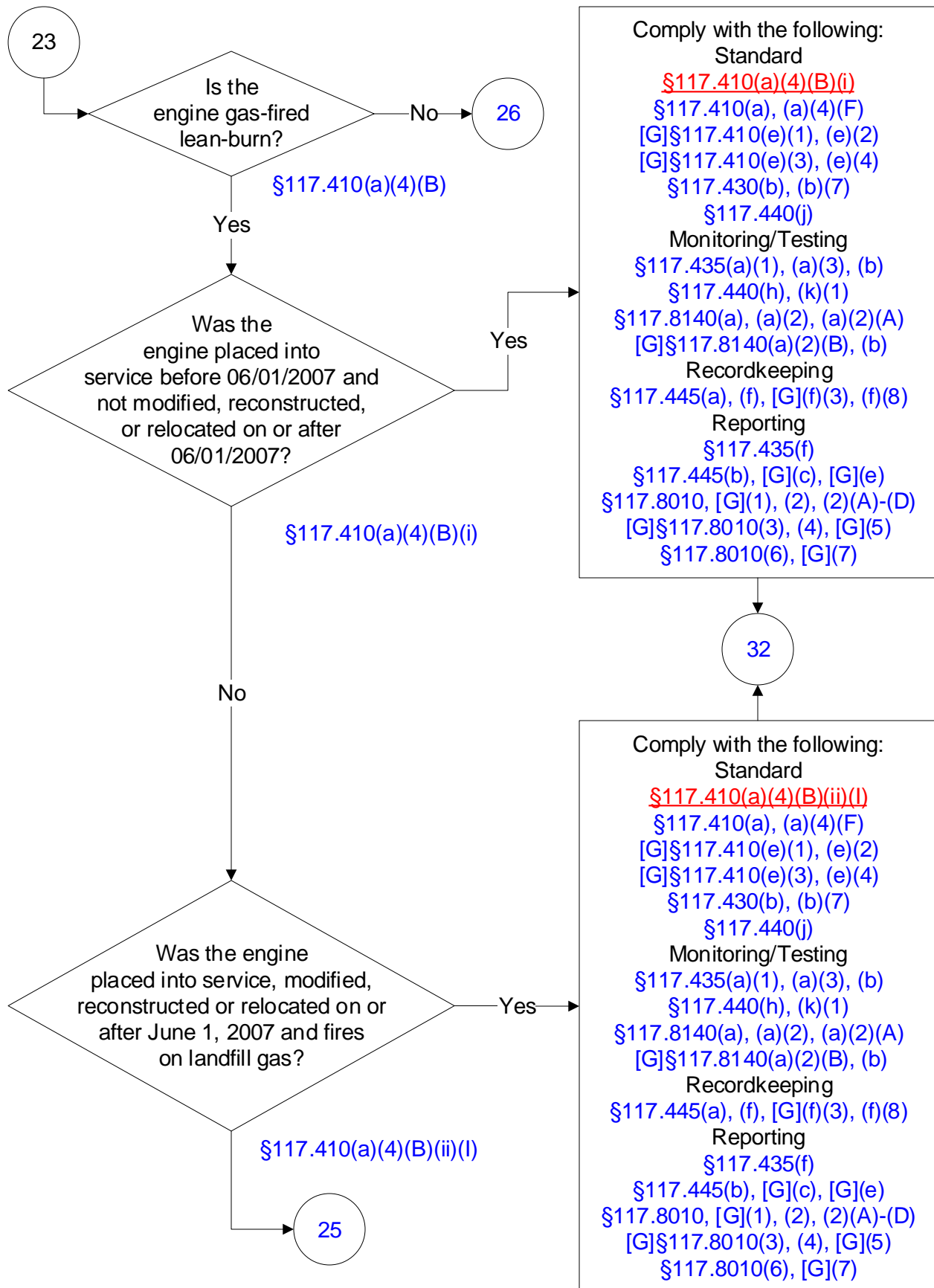
# 30 TAC Chapter 117, DFW Ozone Nonattainment Area: Stationary Internal Combustion Engines

(13 of 38)



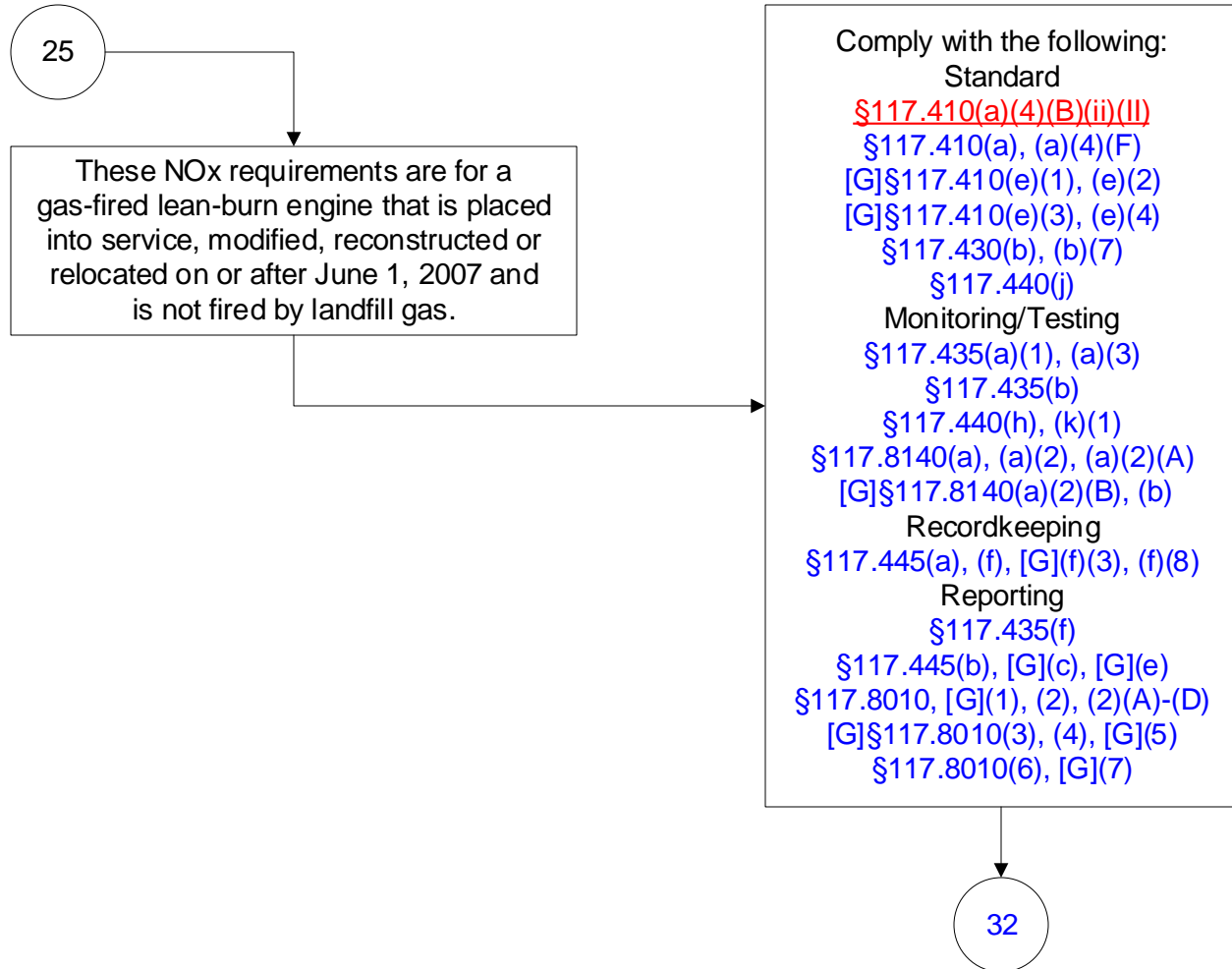
# 30 TAC Chapter 117, DFW Ozone Nonattainment Area: Stationary Internal Combustion Engines

(14 of 38)



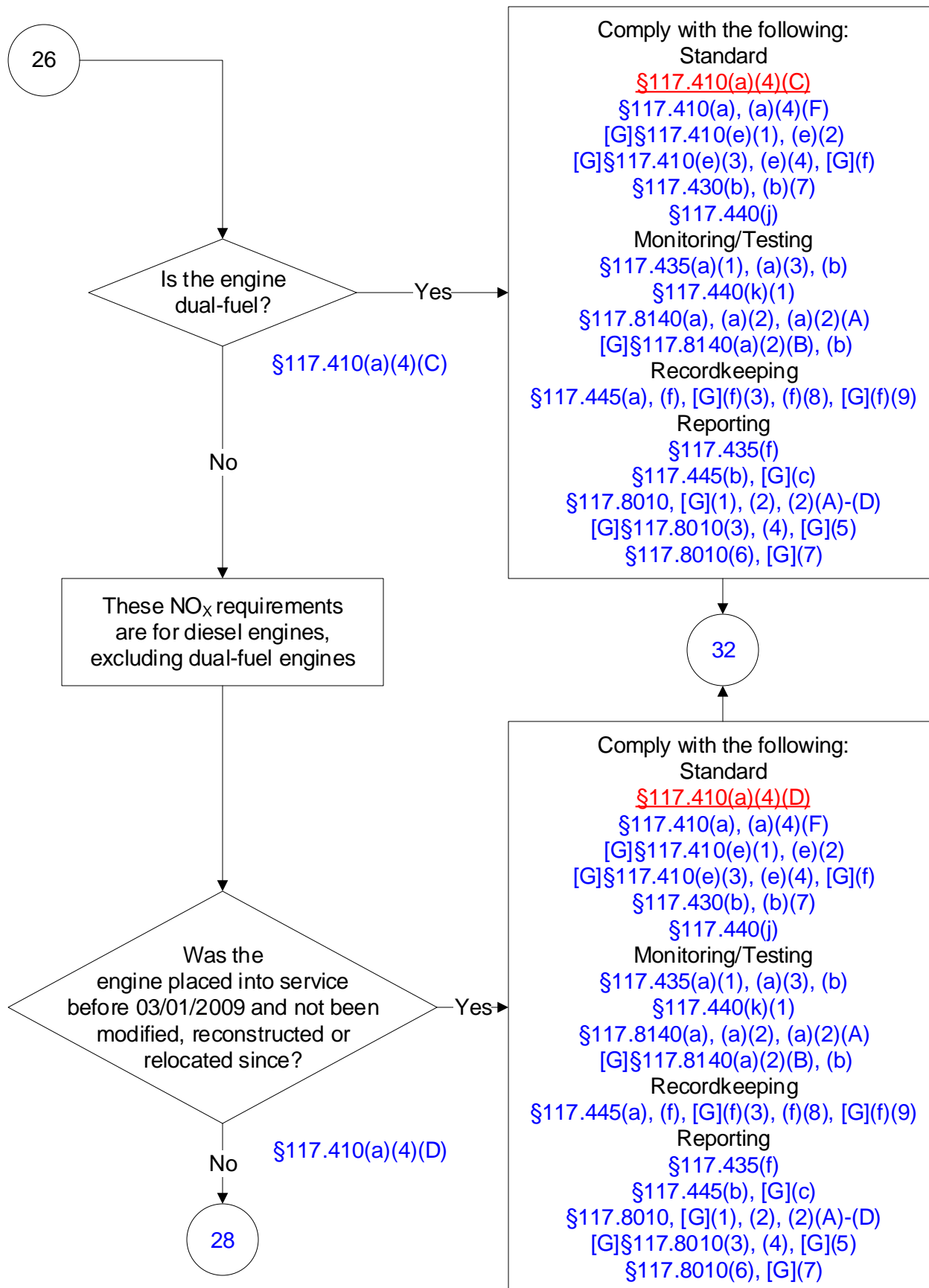
# 30 TAC Chapter 117, DFW Ozone Nonattainment Area: Stationary Internal Combustion Engines

(15 of 38)



# 30 TAC Chapter 117, DFW Ozone Nonattainment Area: Stationary Internal Combustion Engines

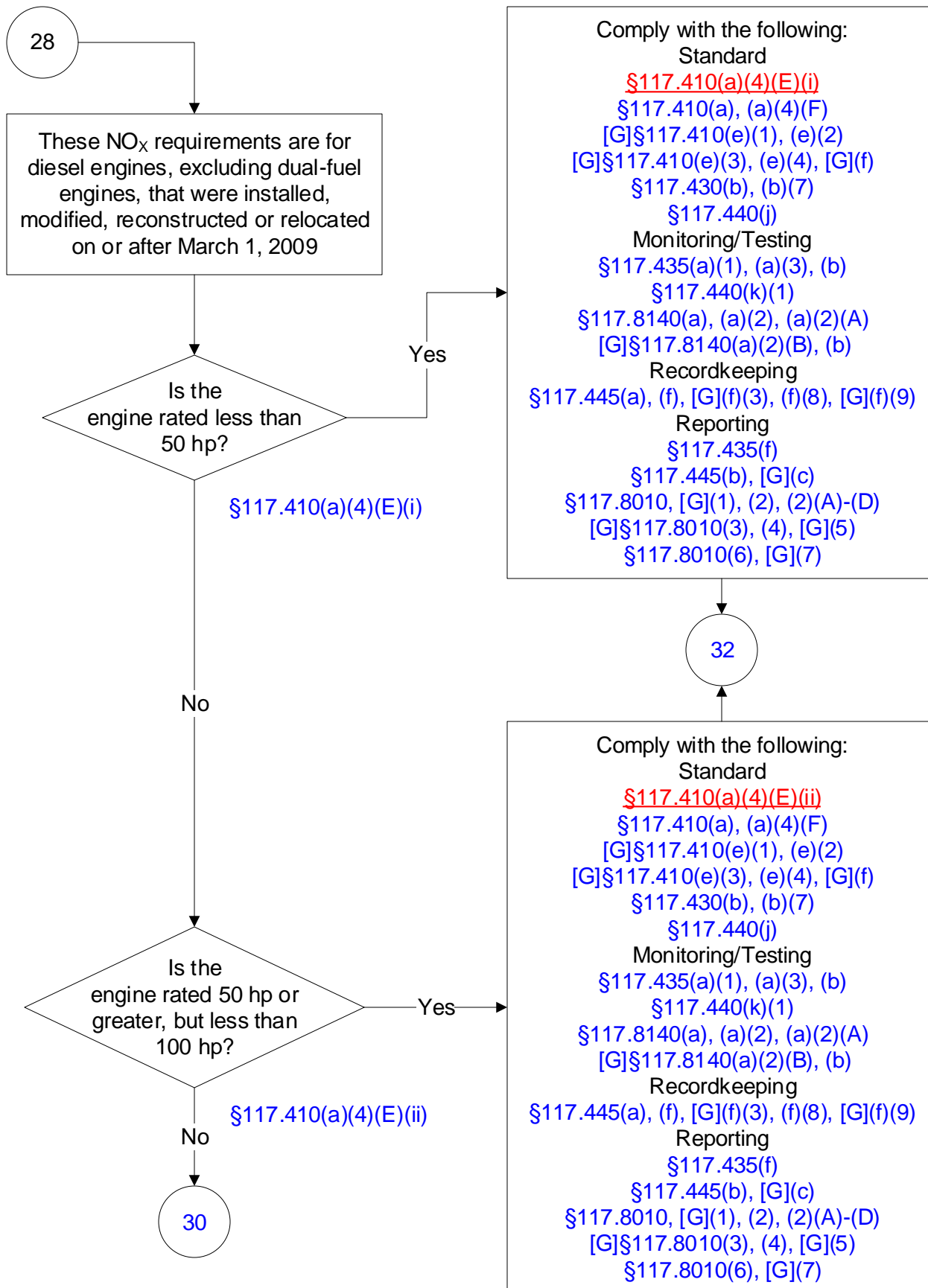
(16 of 38)





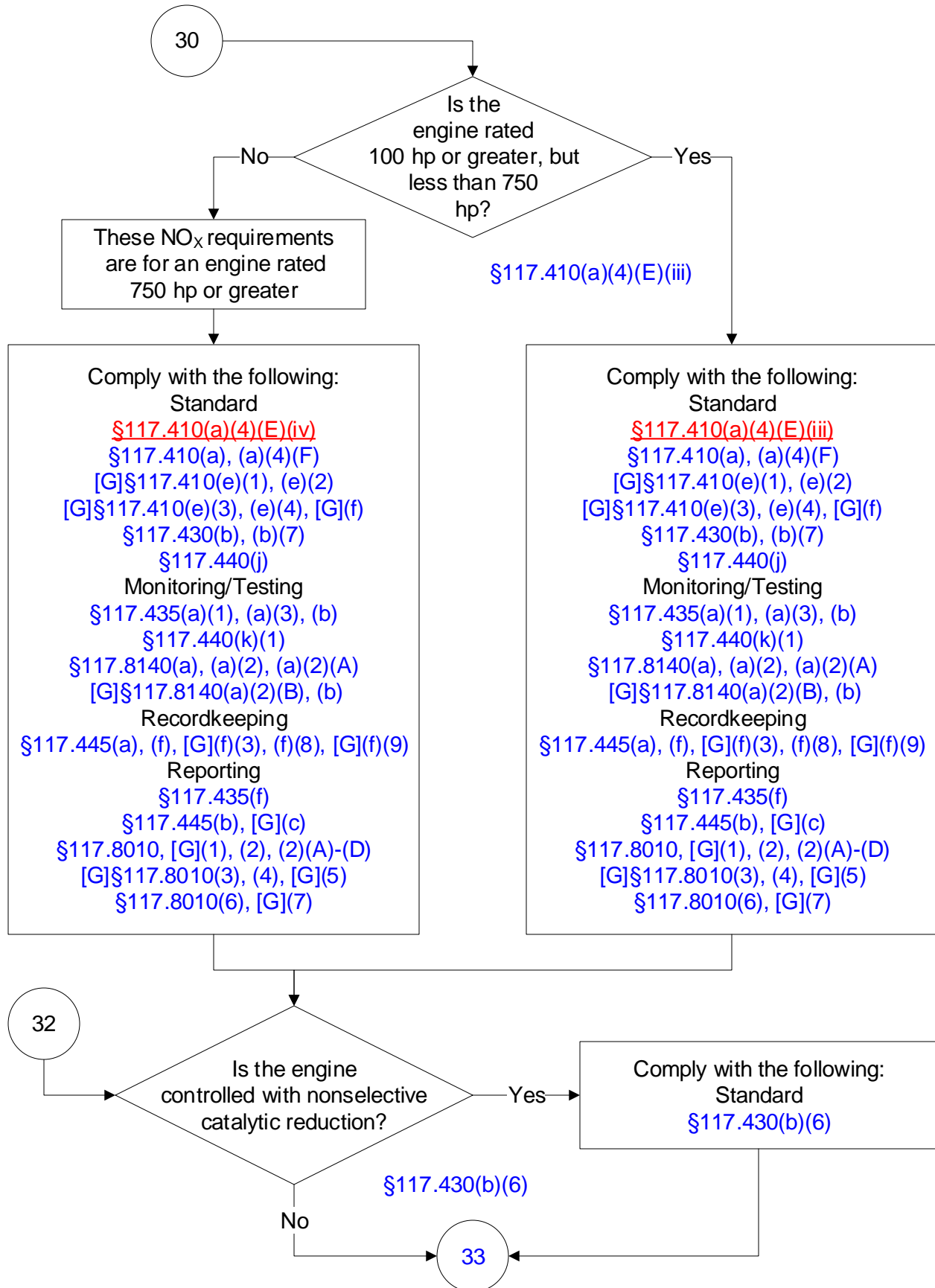
# 30 TAC Chapter 117, DFW Ozone Nonattainment Area: Stationary Internal Combustion Engines

(17 of 38)



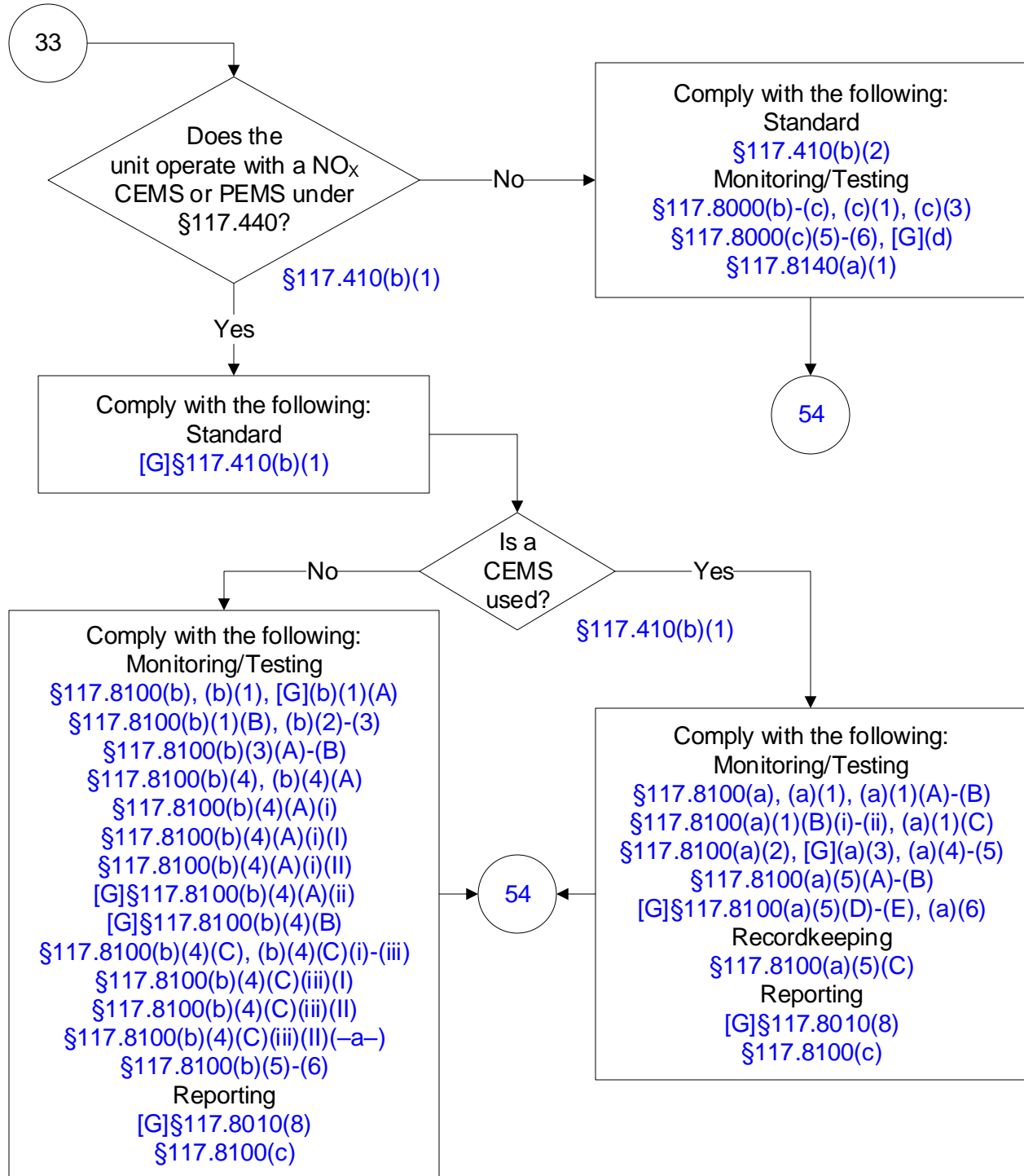
# 30 TAC Chapter 117, DFW Ozone Nonattainment Area: Stationary Internal Combustion Engines

(18 of 38)



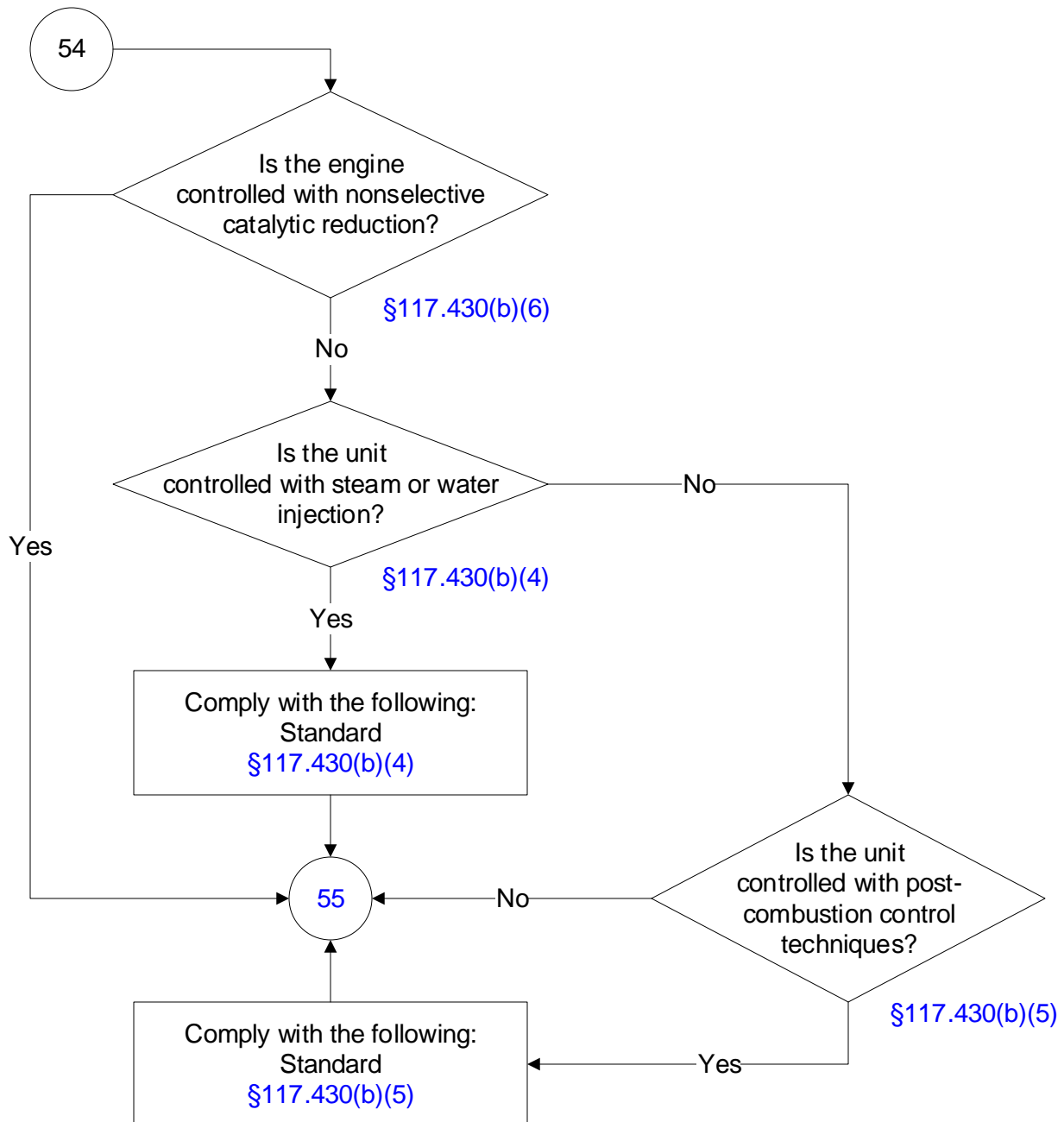
# 30 TAC Chapter 117, DFW Ozone Nonattainment Area: Stationary Internal Combustion Engines

(19 of 38)



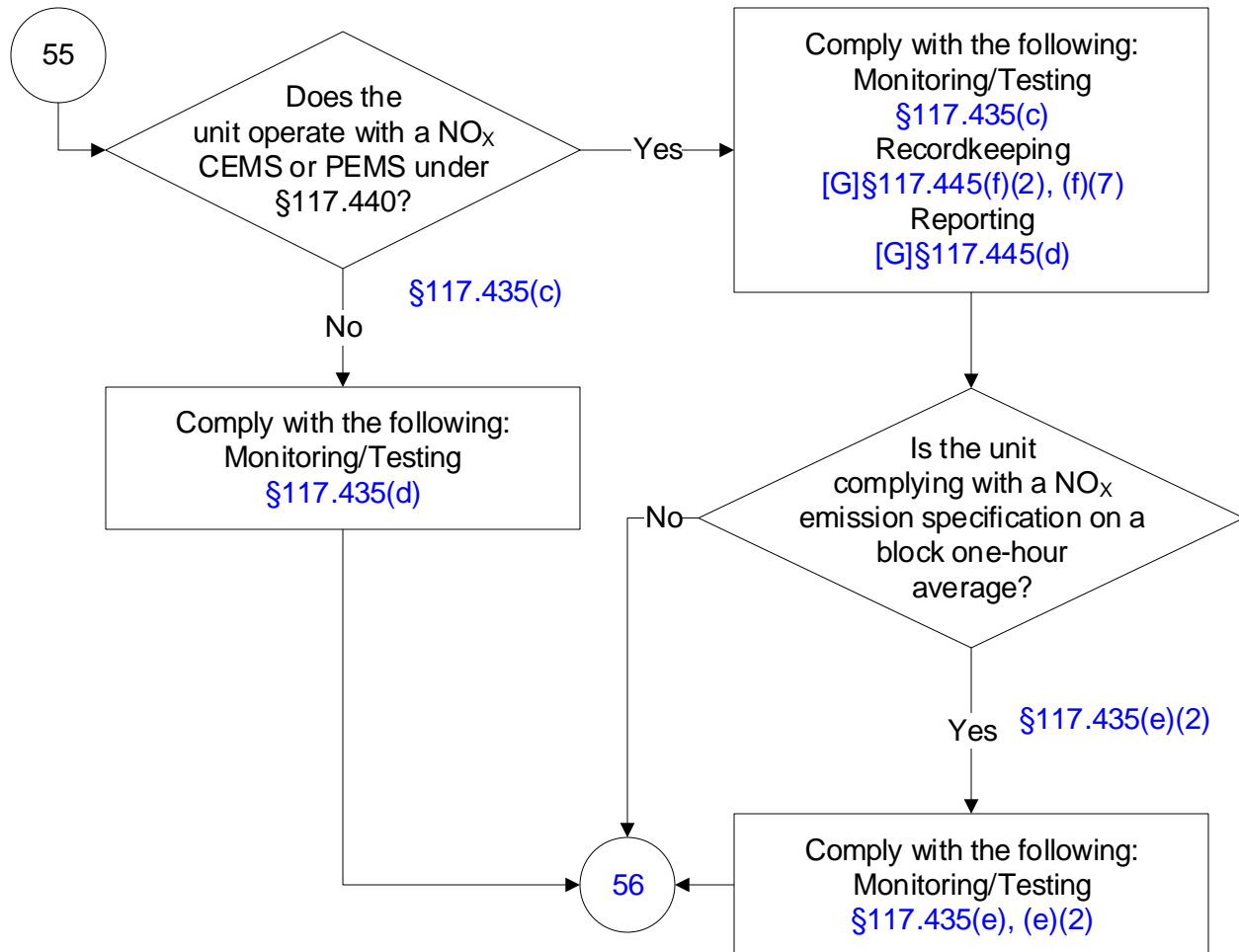
# 30 TAC Chapter 117, DFW Ozone Nonattainment Area: Stationary Internal Combustion Engines

(20 of 38)



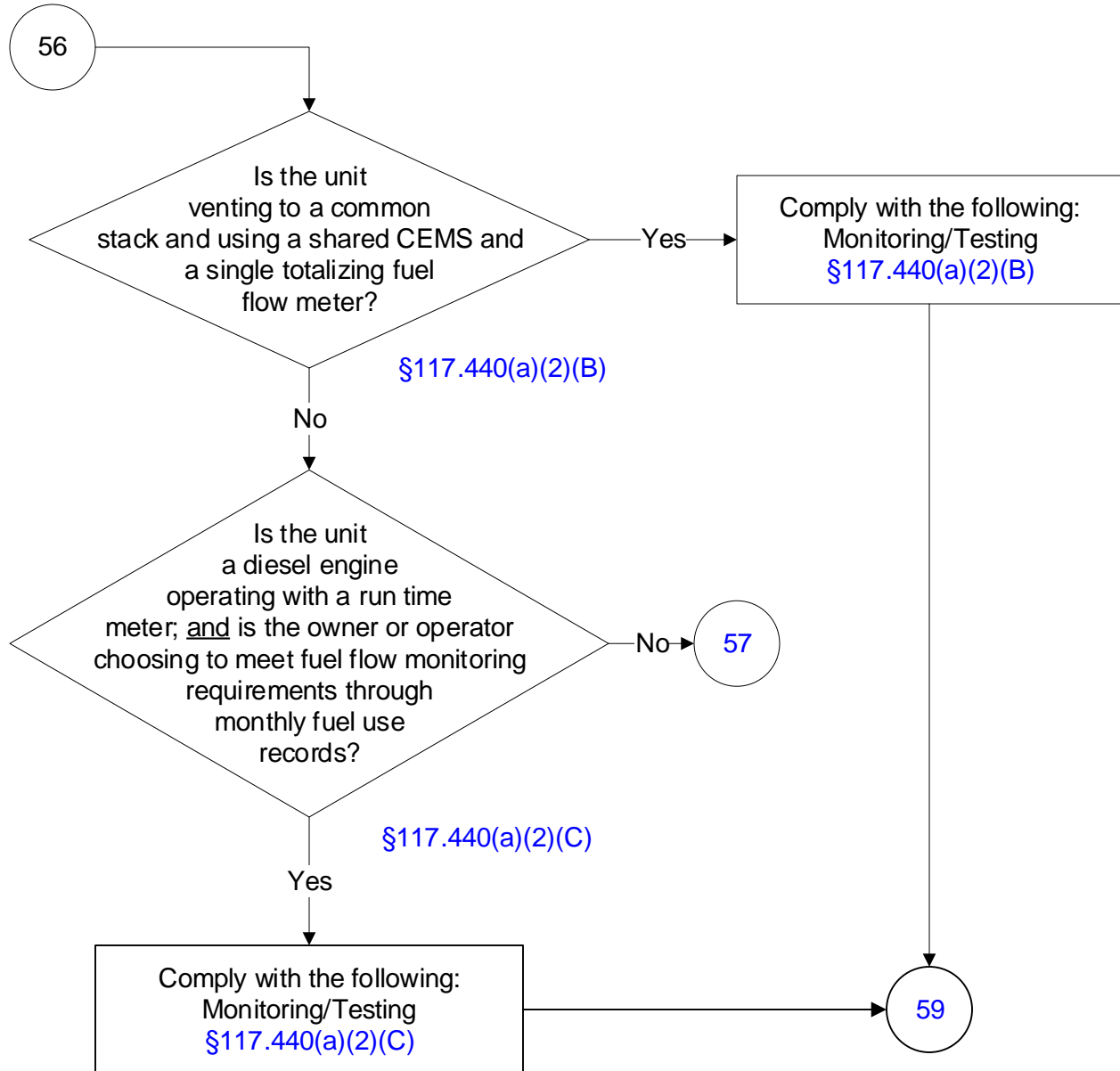
# 30 TAC Chapter 117, DFW Ozone Nonattainment Area: Stationary Internal Combustion Engines

(21 of 38)



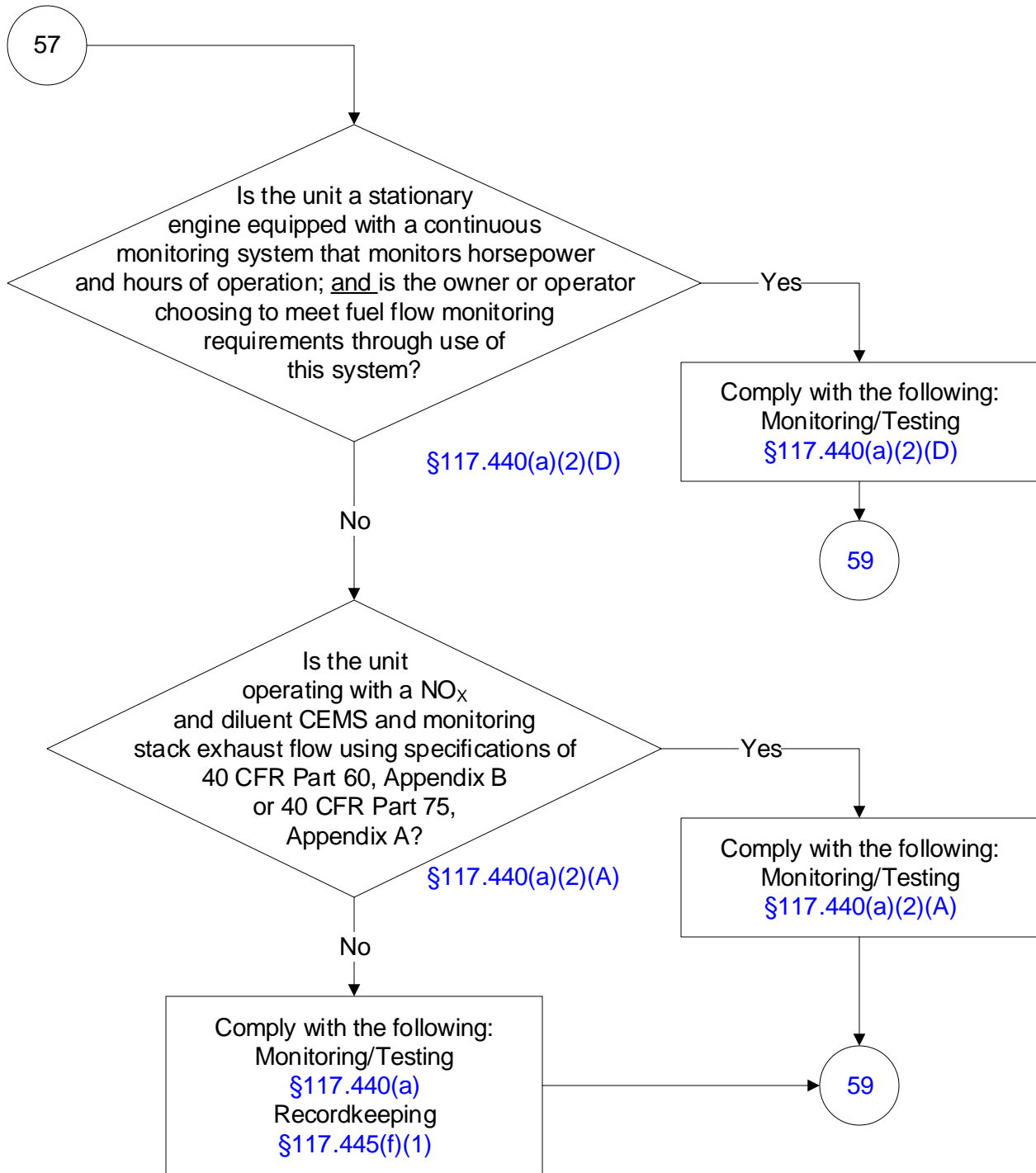
# 30 TAC Chapter 117, DFW Ozone Nonattainment Area: Stationary Internal Combustion Engines

(22 of 38)



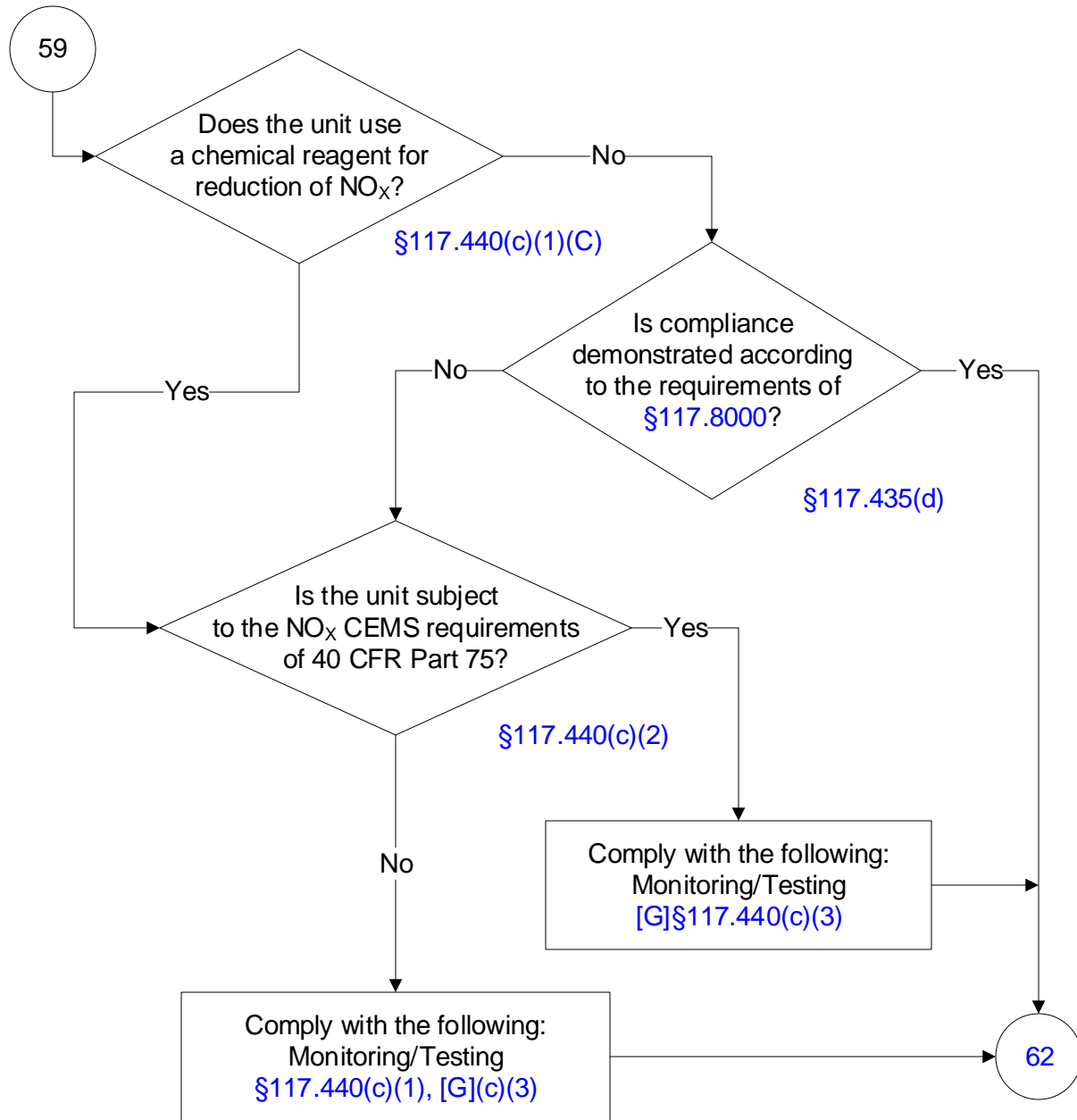
# 30 TAC Chapter 117, DFW Ozone Nonattainment Area: Stationary Internal Combustion Engines

(23 of 38)



# 30 TAC Chapter 117, DFW Ozone Nonattainment Area: Stationary Internal Combustion Engines

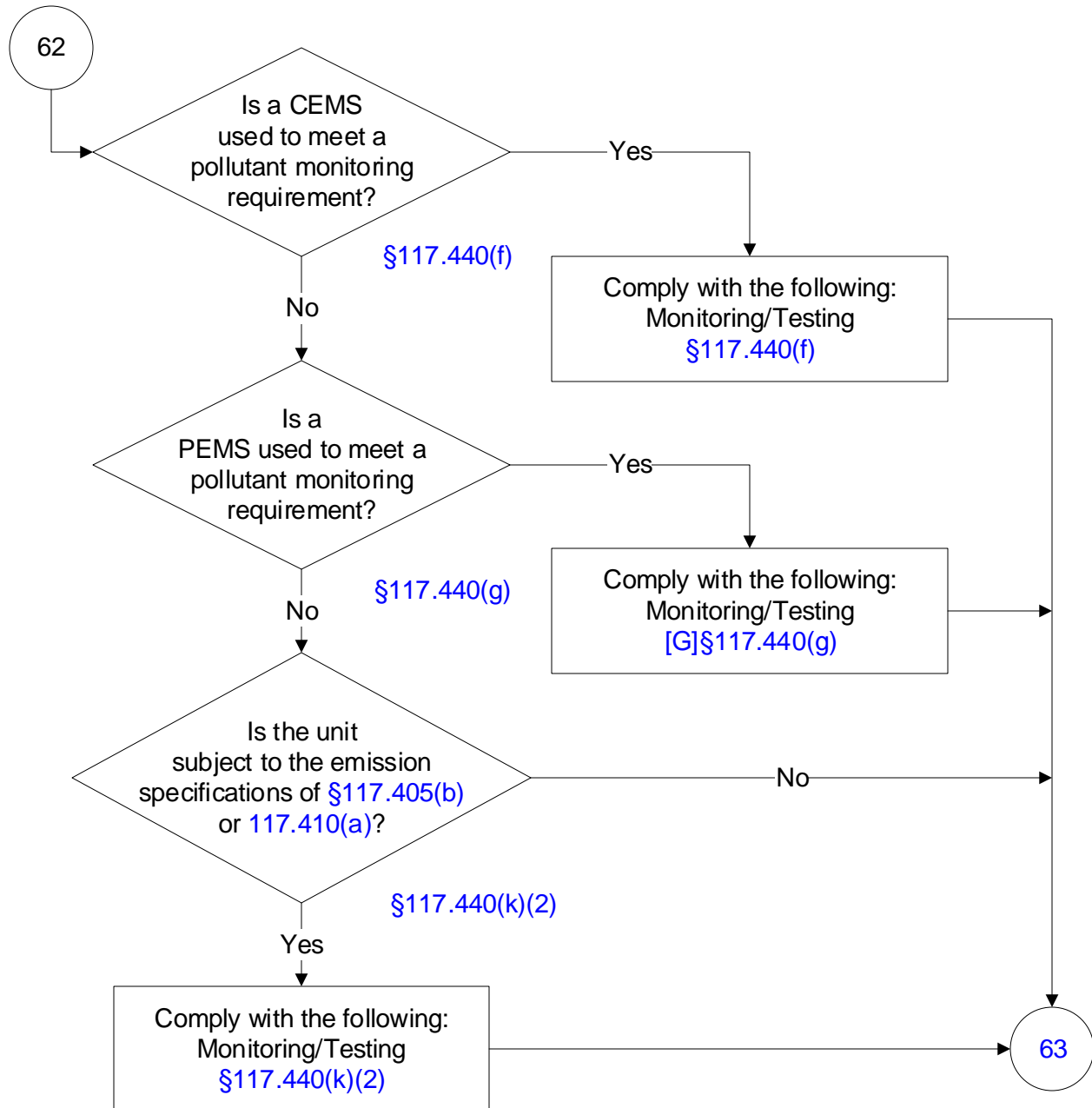
(24 of 38)





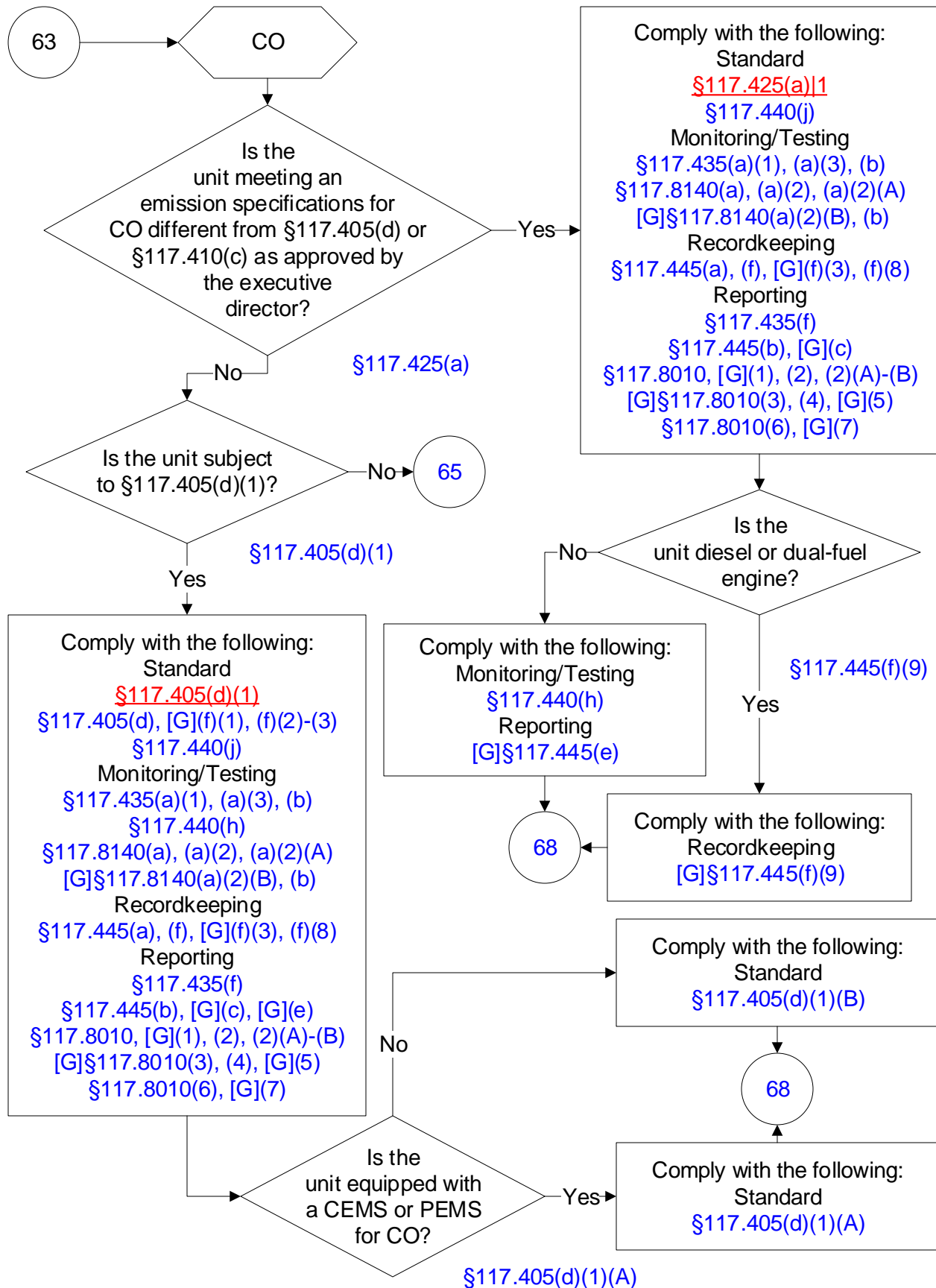
# 30 TAC Chapter 117, DFW Ozone Nonattainment Area: Stationary Internal Combustion Engines

(25 of 38)



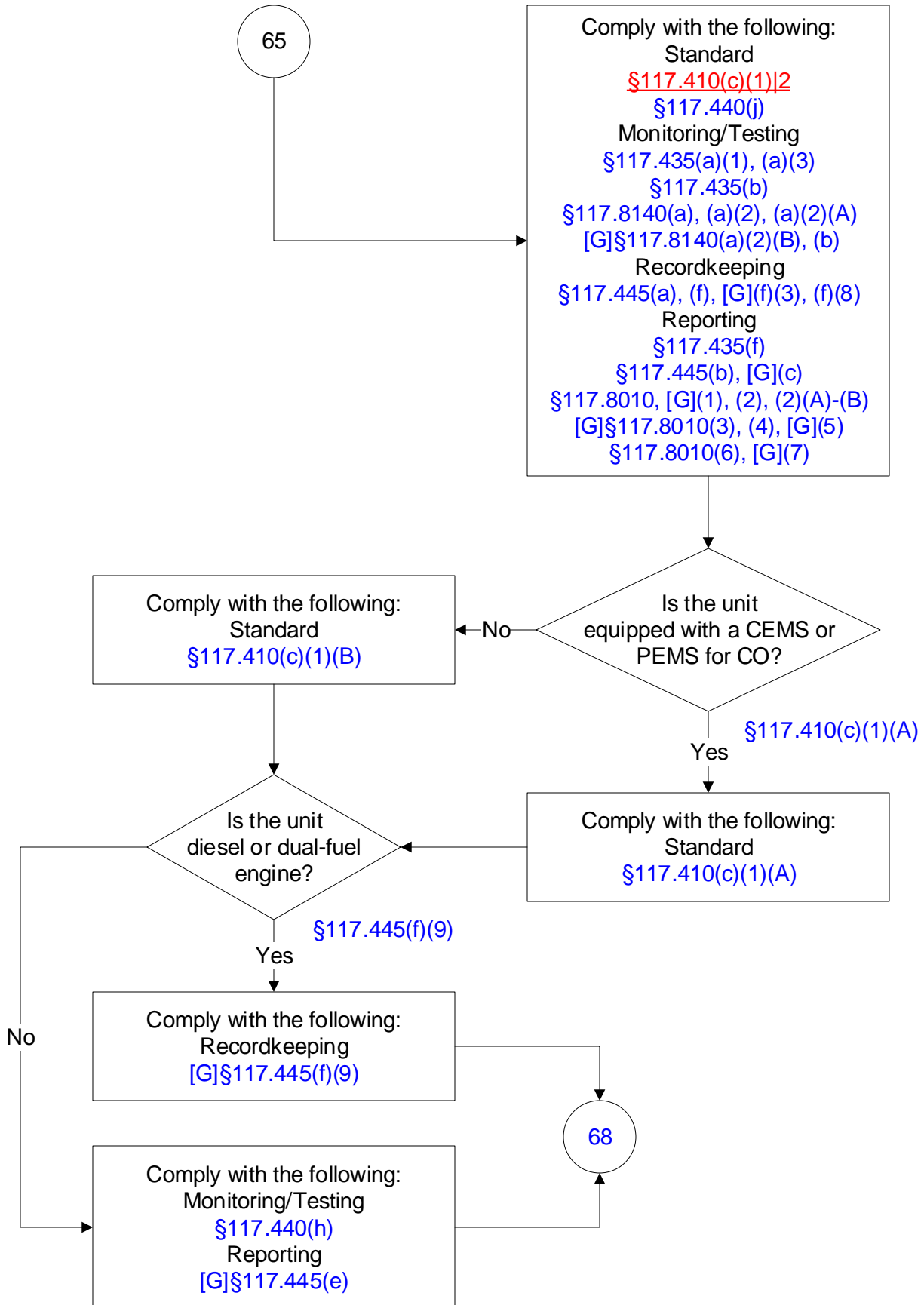
# 30 TAC Chapter 117, DFW Ozone Nonattainment Area: Stationary Internal Combustion Engines

(26 of 38)



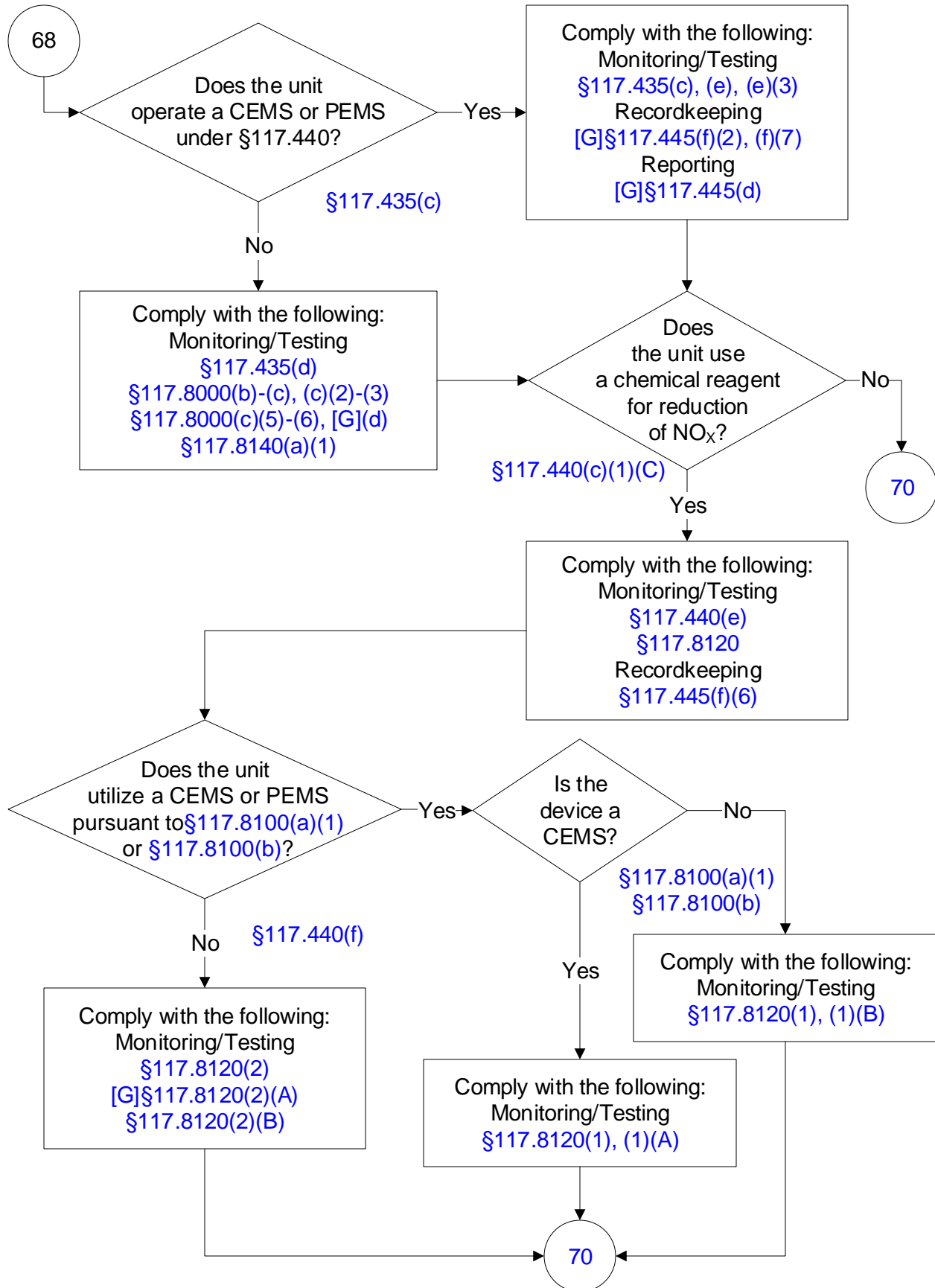
# 30 TAC Chapter 117, DFW Ozone Nonattainment Area: Stationary Internal Combustion Engines

(27 of 38)



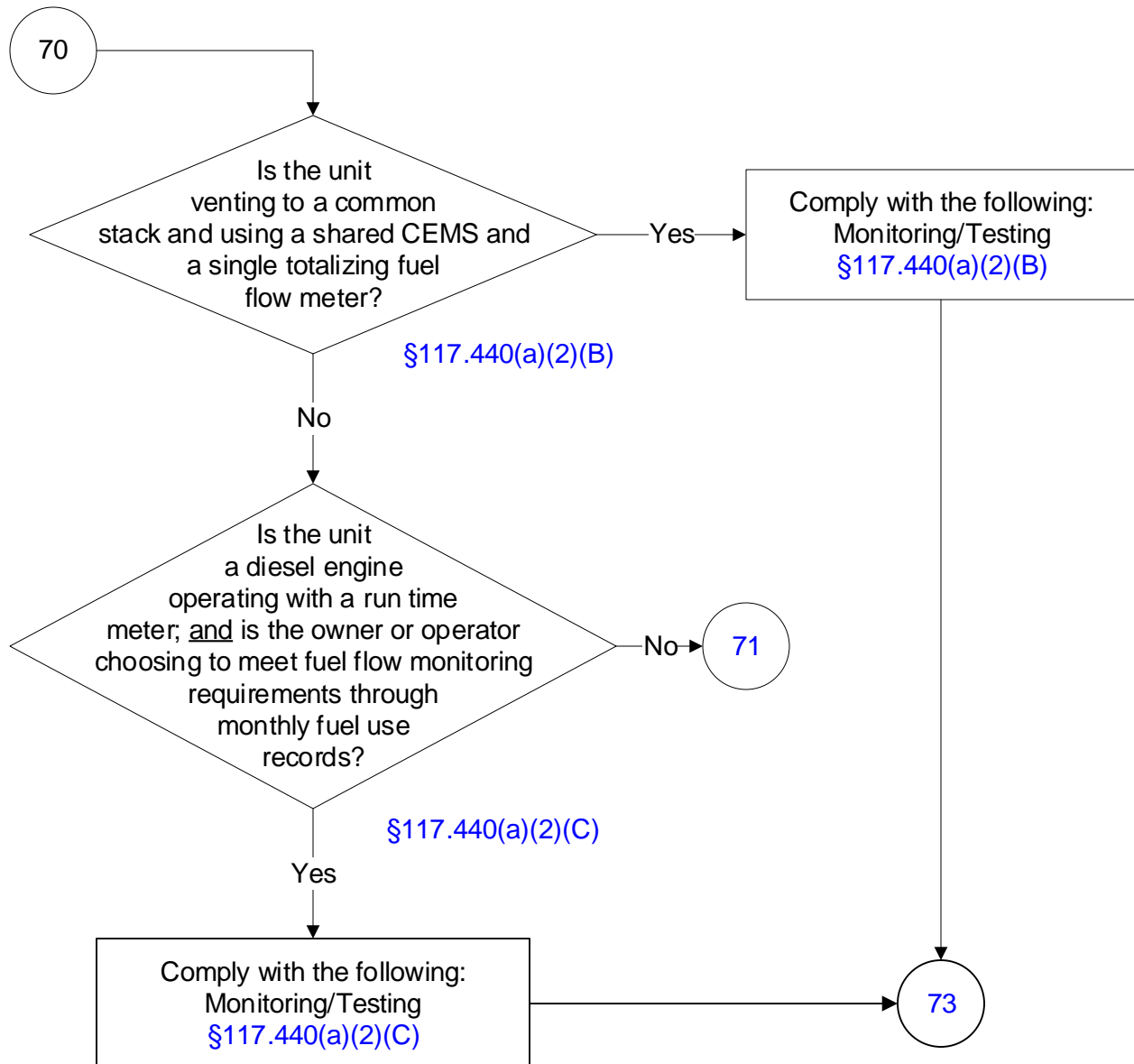
# 30 TAC Chapter 117, DFW Ozone Nonattainment Area: Stationary Internal Combustion Engines

(28 of 38)



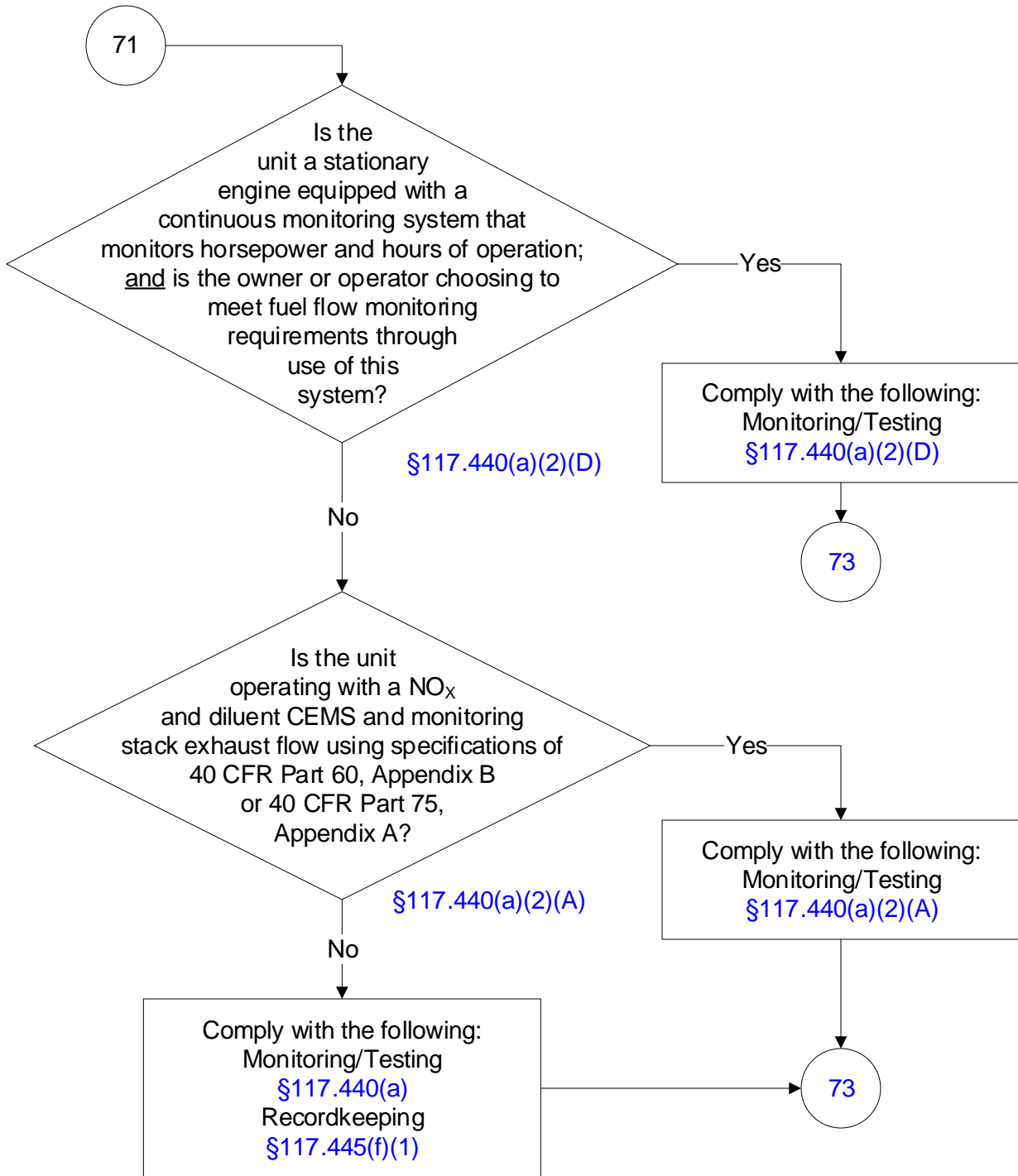
# 30 TAC Chapter 117, DFW Ozone Nonattainment Area: Stationary Internal Combustion Engines

(29 of 38)



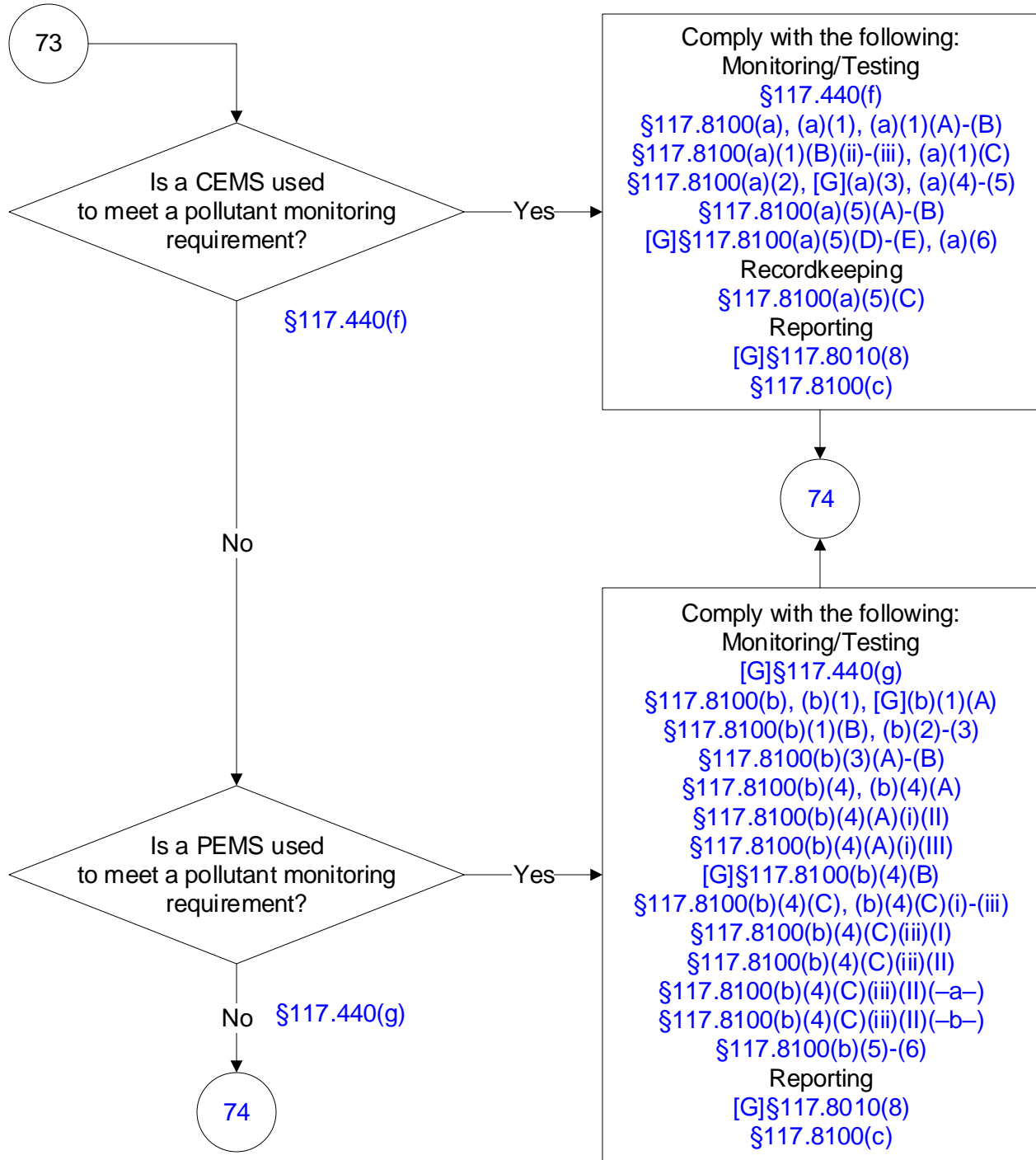
# 30 TAC Chapter 117, DFW Ozone Nonattainment Area: Stationary Internal Combustion Engines

(30 of 38)



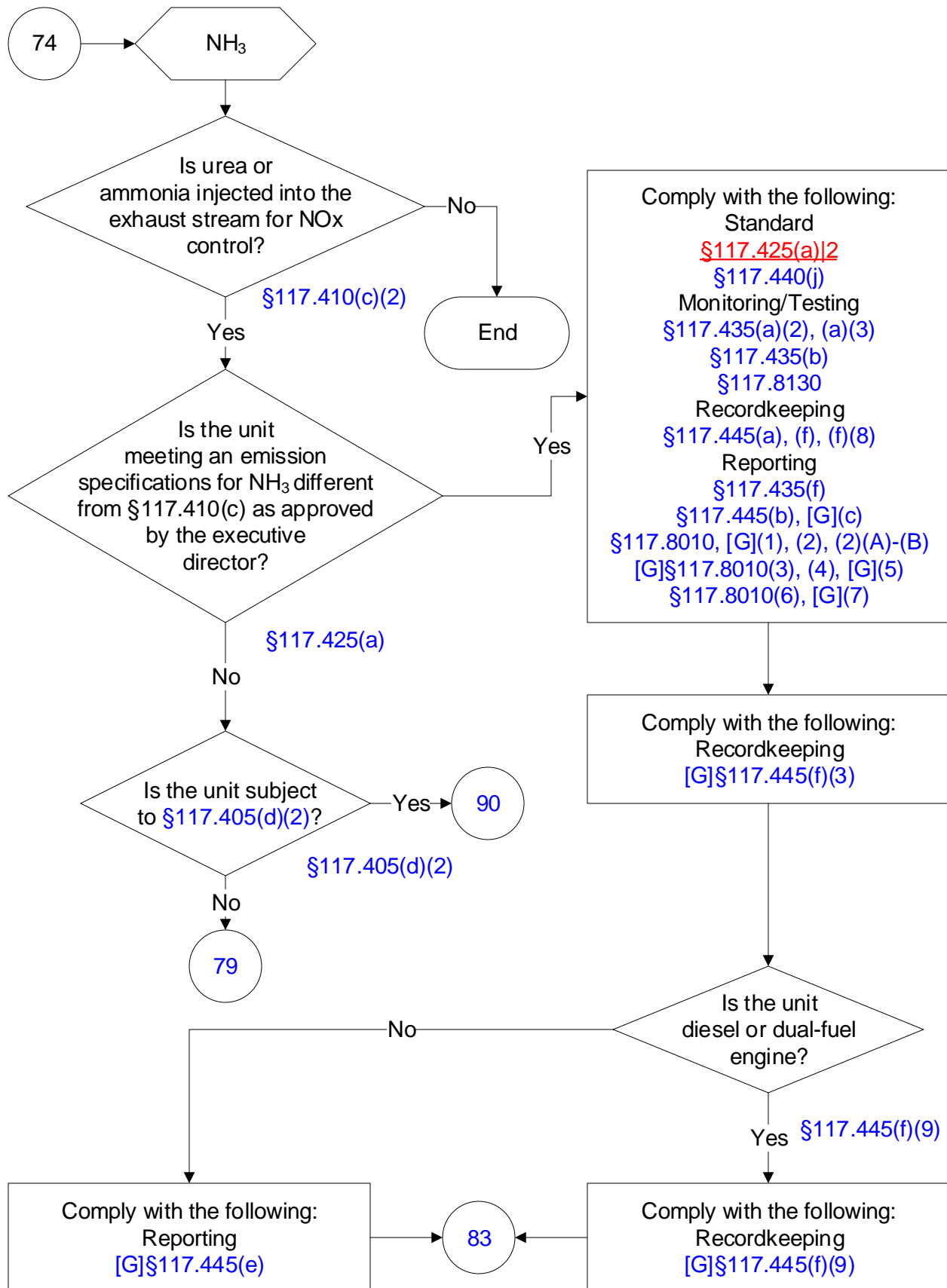
# 30 TAC Chapter 117, DFW Ozone Nonattainment Area: Stationary Internal Combustion Engines

(31 of 38)



# 30 TAC Chapter 117, DFW Ozone Nonattainment Area: Stationary Internal Combustion Engines

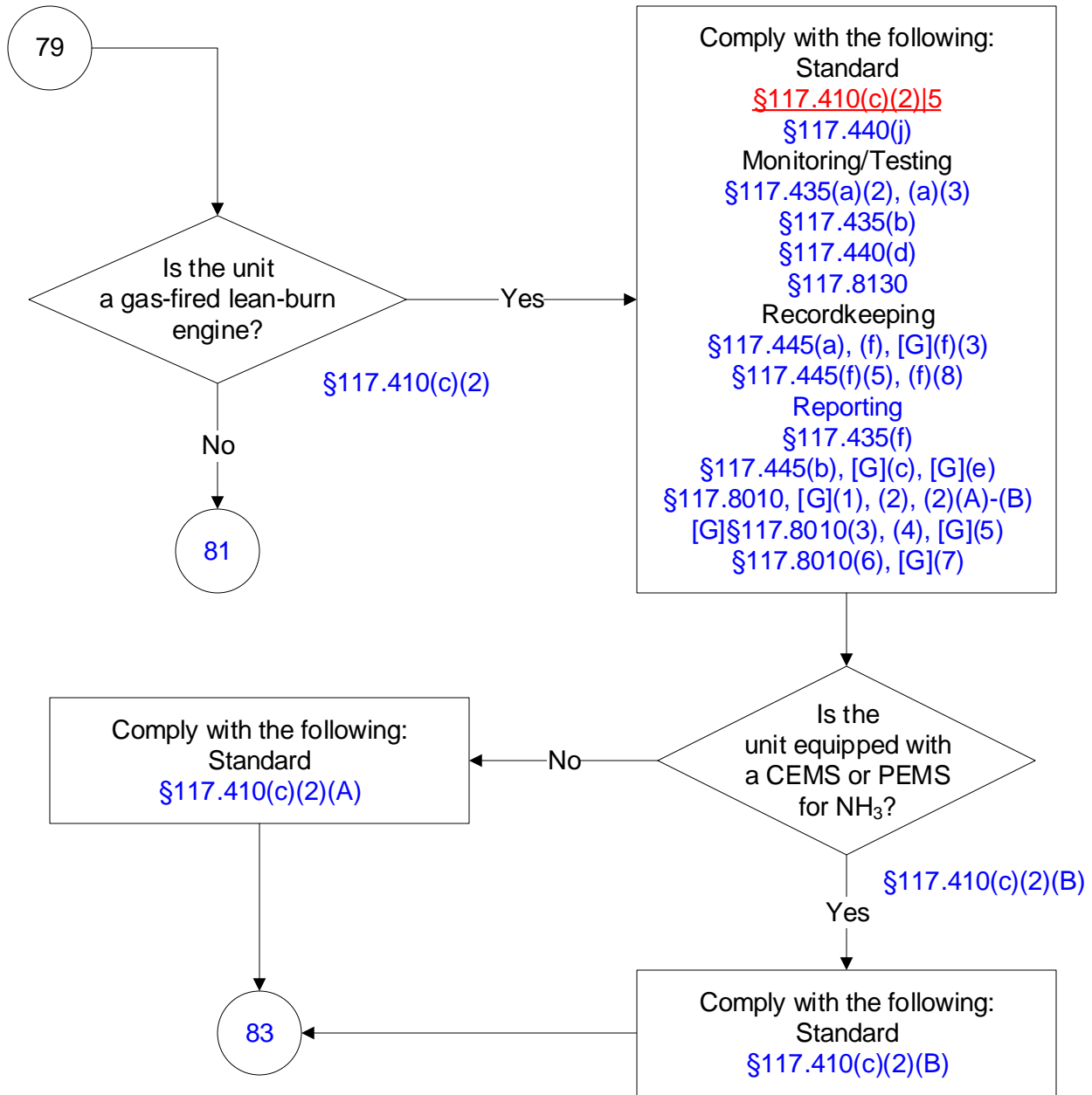
(32 of 38)





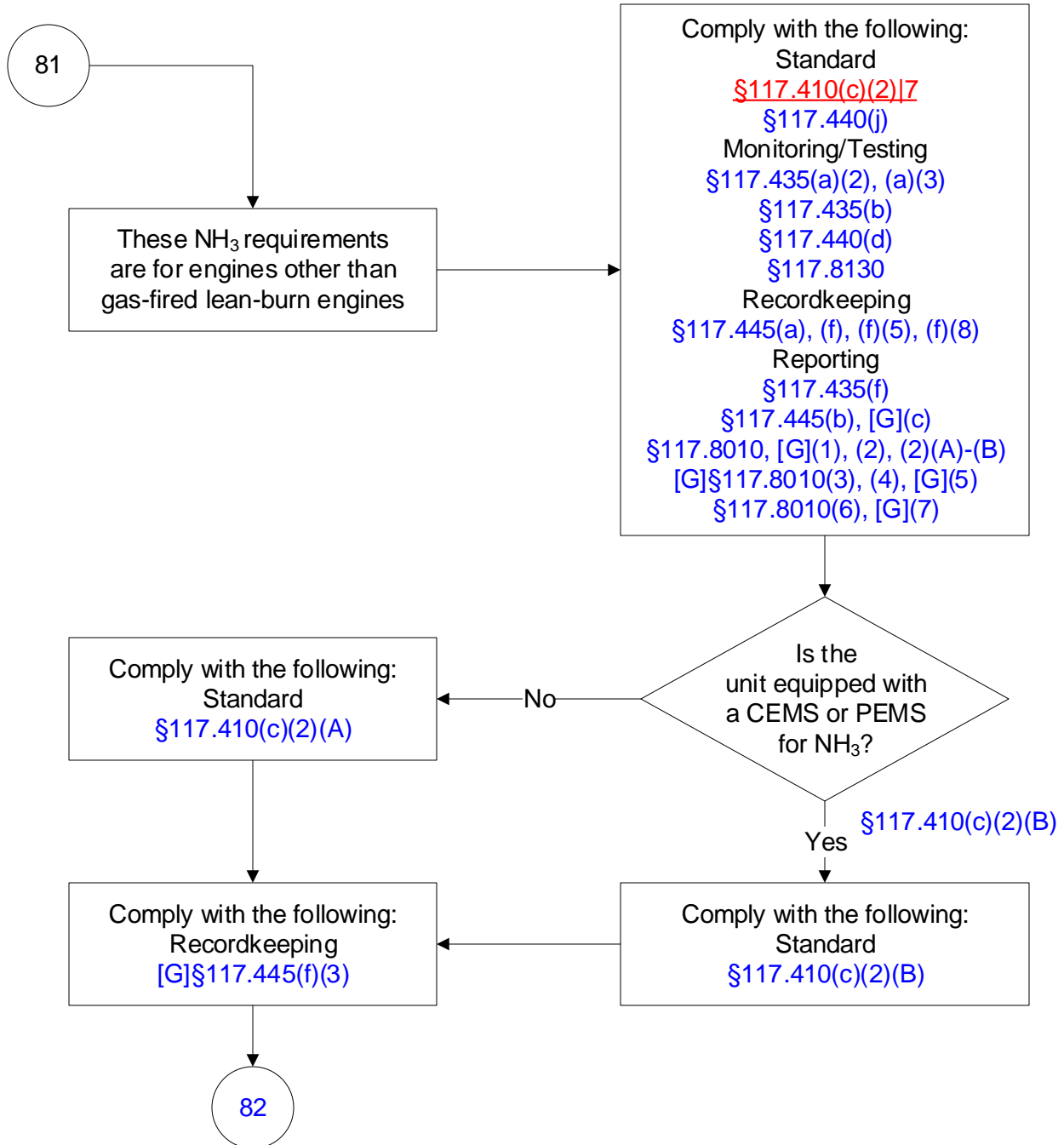
# 30 TAC Chapter 117, DFW Ozone Nonattainment Area: Stationary Internal Combustion Engines

(33 of 38)



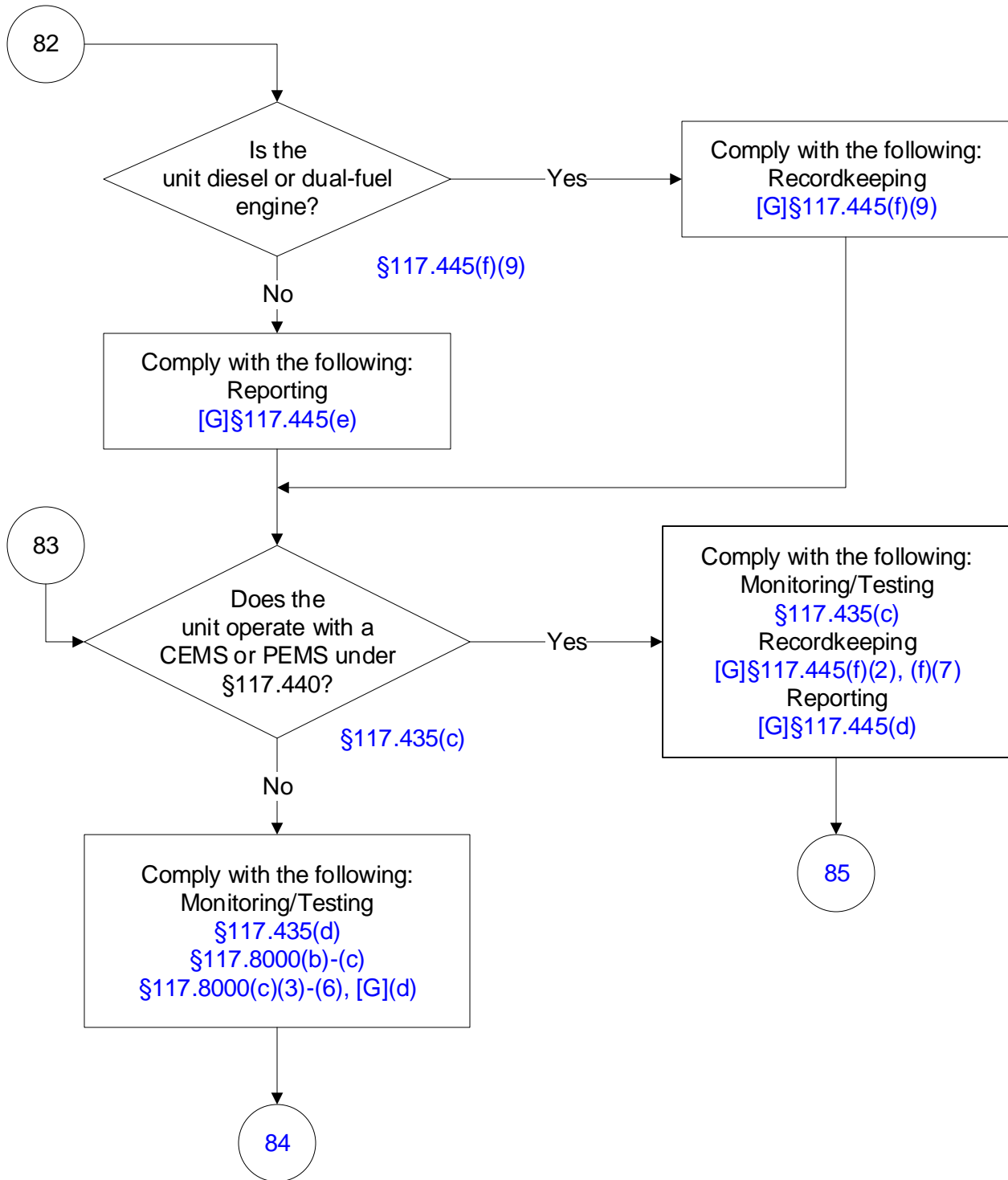
# 30 TAC Chapter 117, DFW Ozone Nonattainment Area: Stationary Internal Combustion Engines

(34 of 38)



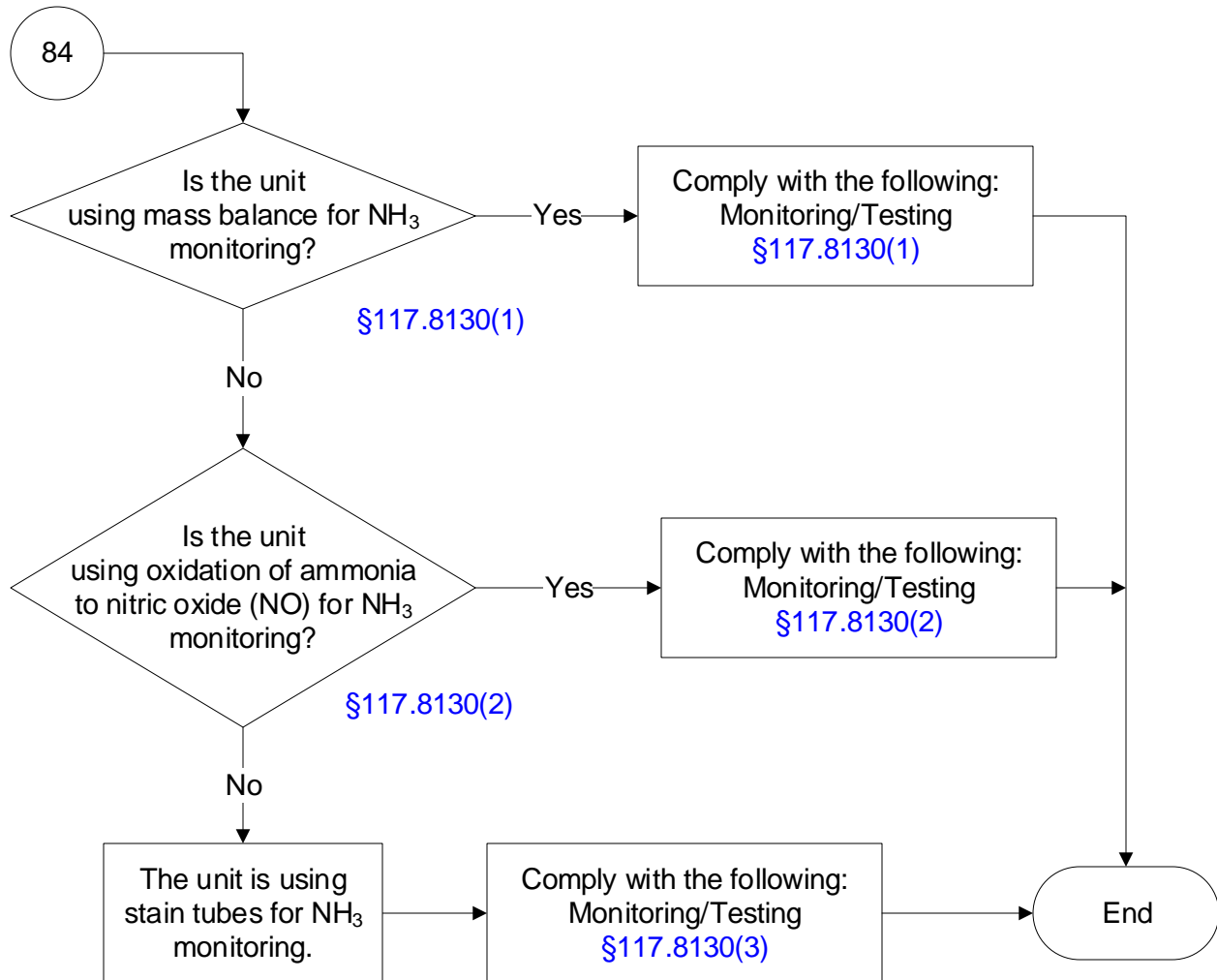
# 30 TAC Chapter 117, DFW Ozone Nonattainment Area: Stationary Internal Combustion Engines

(35 of 38)



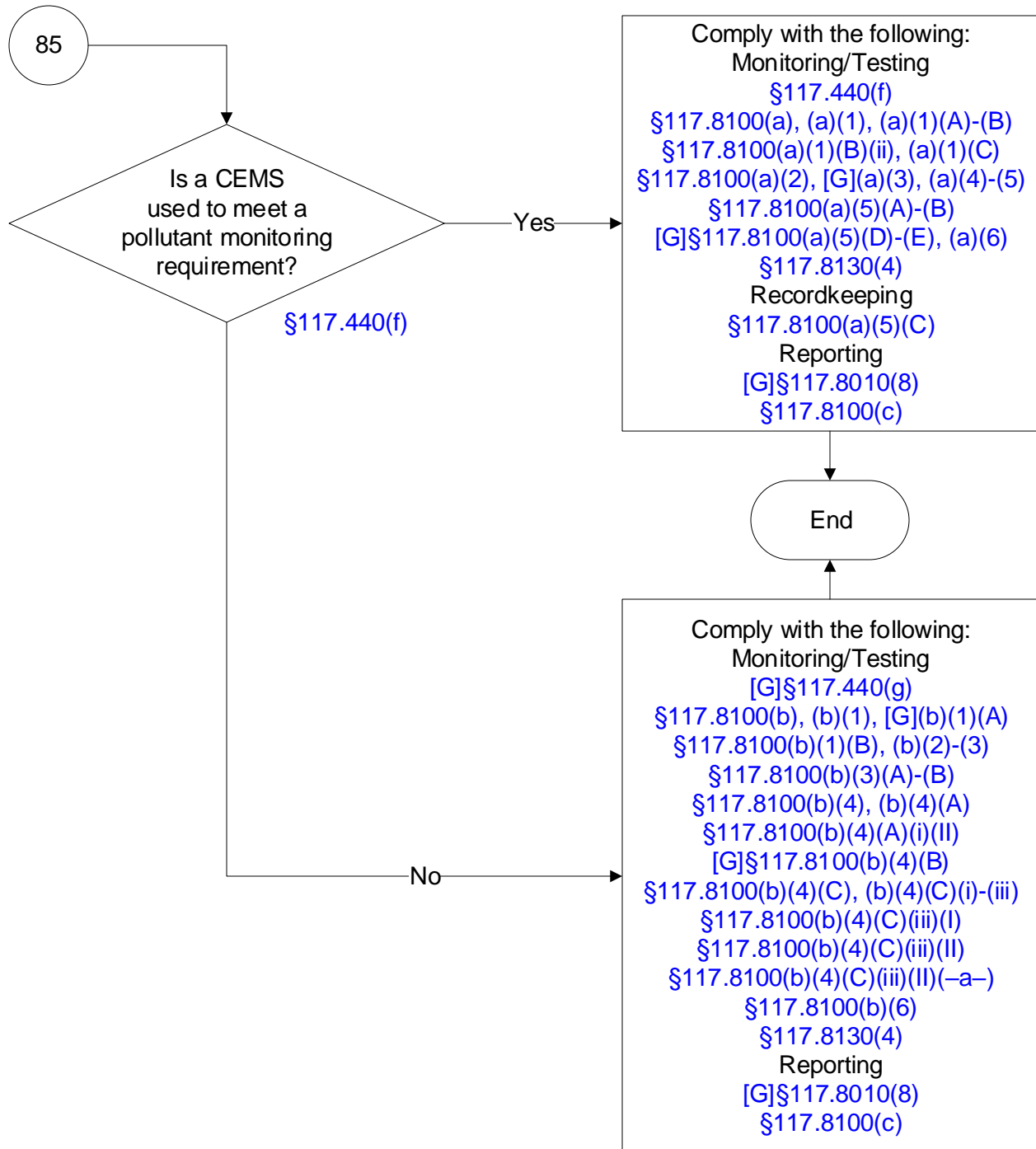
# 30 TAC Chapter 117, DFW Ozone Nonattainment Area: Stationary Internal Combustion Engines

(36 of 38)



# 30 TAC Chapter 117, DFW Ozone Nonattainment Area: Stationary Internal Combustion Engines

(37 of 38)



# 30 TAC Chapter 117, DFW Ozone Nonattainment Area: Stationary Internal Combustion Engines (38 of 38)

