



# San Saba River Report

---

**March 2026**

Prepared by  
Water Availability Division

TCEQ CTF-015  
March 2026

---

TEXAS COMMISSION ON ENVIRONMENTAL QUALITY • PO BOX 13087 • AUSTIN, TX 78711-3087

TCEQ is an equal opportunity employer. The agency does not allow discrimination on the basis of race, color, religion, national origin, sex, disability, age, sexual orientation, or veteran status. In compliance with the Americans with Disabilities Act, this document may be requested in alternate formats by contacting TCEQ at 512-239-0010, or 800-RELAY-TX (TDD), or by writing PO Box 13087, Austin TX 78711-3087. We authorize you to use or reproduce any original material contained in this publication—that is, any material we did not obtain from other sources. Please acknowledge TCEQ as your source. For more information on TCEQ publications, visit our website at: [tceq.texas.gov/publications](https://tceq.texas.gov/publications)

**How is our customer service?** [tceq.texas.gov/customersurvey](https://tceq.texas.gov/customersurvey)

# Contents

|  |    |
|--|----|
| Introduction .....   | 1  |
| Surface Water Rights .....   | 1  |
| Surface Water Rights Data.....                                     | 1  |
| Priority Calls.....  | 3  |
| Aquatic Resources.....   | 3  |
| Surface Water Hydrology.....                                       | 3  |
| Underflow.....   | 4  |
| Drought Conditions.....  | 5  |
| Streamflow Measurements .....                                      | 6  |
| Groundwater Resources .....  | 8  |
| TCEQ's Role .....  | 8  |
| General Geology.....   | 8  |
| Aquifers .....   | 9  |
| Groundwater Conservation Districts in the San Saba Watershed ..... | 10 |
| Appendix A: Water Rights in the San Saba River Watershed.....      | 12 |
| Appendix B: Aquatic Species .....                                  | 30 |

# Introduction

The Texas Commission on Environmental Quality (TCEQ) was appropriated \$500,000 (Senate Bill 1, 89R, Budget Rider 35, Monitoring and Report on the Upper San Saba River) to support comprehensive reports in three-month intervals on the Upper San Saba River from its headwaters to Richland Springs from March 2026 through November 2026. The comprehensive report will contain information including the monitoring of streamflow levels, observed irrigation practices, observed variations in vegetation that indicate overuse or misuse of water rights, suspected misuse of alluvial wells, the impact to low-to-zero-flows on flora and fauna including species listed on the Endangered Species list, and any enforcement actions taken by the commission to protect superior riparian and appropriated water rights.

This is the first report in the series and will include an overview of the San Saba River watershed, information on surface water rights and data, priority calls, aquatic species, surface water hydrology and drought, current monitoring, and groundwater information. TCEQ has contracted with the Texas Water Resources Institute at Texas A&M University to document observed irrigation practices. TCEQ has also contracted with the Meadows Center for the Environment at Texas State University to document variations in vegetation during the study period. This report will be updated with streamflow monitoring and the results of the contracted reports at three-month intervals.

## Surface Water Rights

TCEQ has jurisdiction over surface water rights, including enforcement of those rights. (Tex. Water Code § 5.013(a)(1)) The water rights permitting regulatory framework is set out in Chapter 11 of the Texas Water Code (TWC). TCEQ is tasked by the Texas Legislature with implementing the surface water rights permitting program and enforcing surface water rights. Surface water rights in the San Saba watershed are administered under the prior appropriation doctrine. The doctrine is first in time is first in right – senior users get water before more junior users. (Tex. Water Code § 11.027)

In addition to permitted water rights, the legislature has exempted specific uses from the water rights permitting regulatory scheme and these uses are superior to permitted uses. One such exemption is domestic and livestock use.

## Surface Water Rights Data

There are 163 water rights in the San Saba River watershed, which are owned by 235 individuals, businesses, and cities, and authorize approximately 24,500 acre-feet per year for several uses. Figure 1. shows the location of water rights within the San Saba watershed.

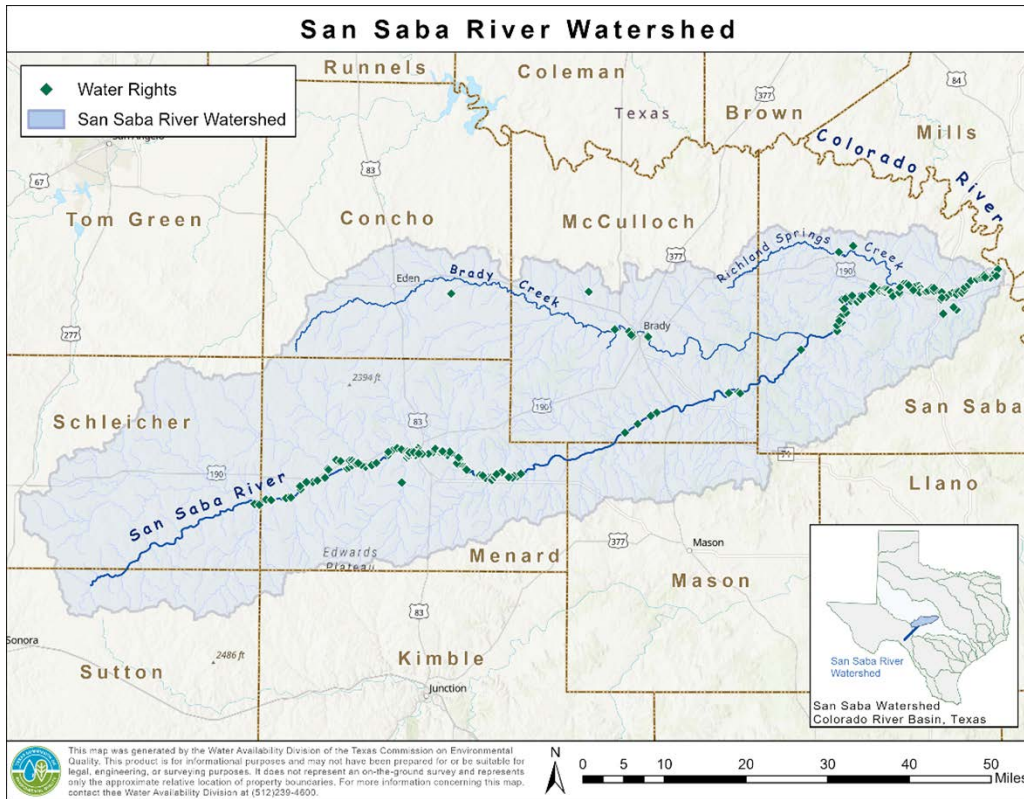


Figure 1. Water Rights in the San Saba Watershed

The majority of the water rights in the San Saba watershed are authorized for agricultural use with some water rights also authorized for instream, municipal, industrial, mining, and recreation uses. The percentage of water rights authorized for these uses is shown in Figure 2. below.

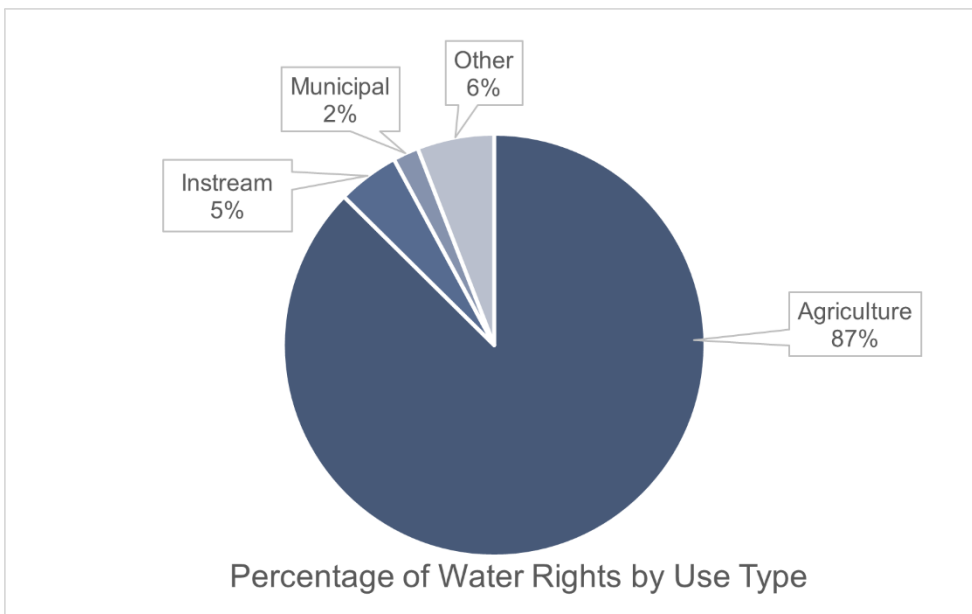


Figure 2. Surface Water Rights by Use Type

Most of the surface water rights in the San Saba watershed were granted during the adjudication of water rights and have priority dates ranging from the late 1800s to the present. Over 60% of the authorized water use has priority dates that are over one hundred years old. A detailed list of the water rights, authorized amounts, priority dates, and owners is included in this report as Appendix A.

## Priority Calls

Texas experiences drought conditions, which can result in a lack of river flow. If a water right holder or a domestic and livestock user is not receiving the water they are entitled to, they can make a priority call to ask TCEQ to administer water rights in accordance with the prior appropriation doctrine. (Tex. Water Code § 11.053) In short, junior water right holders may receive some or none of their water during times of shortage if a senior water right holder or superior user makes a priority call that results in suspension or curtailment of junior water rights.

TCEQ has received multiple priority calls from domestic and livestock users along the San Saba River, and the Executive Director issued letters suspending water rights in response to some of the earlier calls. TCEQ performed flow monitoring during the suspensions. The flow monitoring showed that the suspension of upstream water rights did not result in additional water reaching the location of the priority calls because of dry conditions in the watershed which resulted in high loss rates. After 2013, TCEQ did not suspend water rights because the agency's experience was that there was often some water available at the priority caller's location and suspension of water rights did not result in water that could be beneficially used by the priority callers.

## Aquatic Resources

Thirty-one species of fish have been documented to occur on the mainstem of the Upper San Saba River from the headwaters to Richland Springs, Texas (Appendix B). Three federally endangered species, the Balcones false spike (*Fusconaia iheringi*), Texas fawnsfoot (*Truncilla macrodon*), and Texas pimpleback (*Cyclonaias petrina*), and one federally threatened species, the Texas fatmucket (*Lampsilis bracteata*), are documented to occur along the mainstem of the Upper San Saba River from the headwaters to Richland Springs, Texas. The United States Fish and Wildlife Service (USFWS) considered these species as candidates for listing in 2011. On August 26, 2021, USFWS proposed to list these species as endangered or threatened under the Endangered Species Act (ESA) of 1973 and designated critical habitat for each species. On June 4, 2024, critical habitat was designated for each species for multiple portions of the Upper San Saba River.

## Surface Water Hydrology

Surface water in the San Saba watershed is highly variable. The United States Geological Survey (USGS) maintains streamflow gages within the San Saba Watershed. The annual flow for the San Saba River at the Menard gage (08144500), for the period 1915-2025, is illustrated by Figure 3. below. The data shows streamflow variability, characterized by drought and flood events.

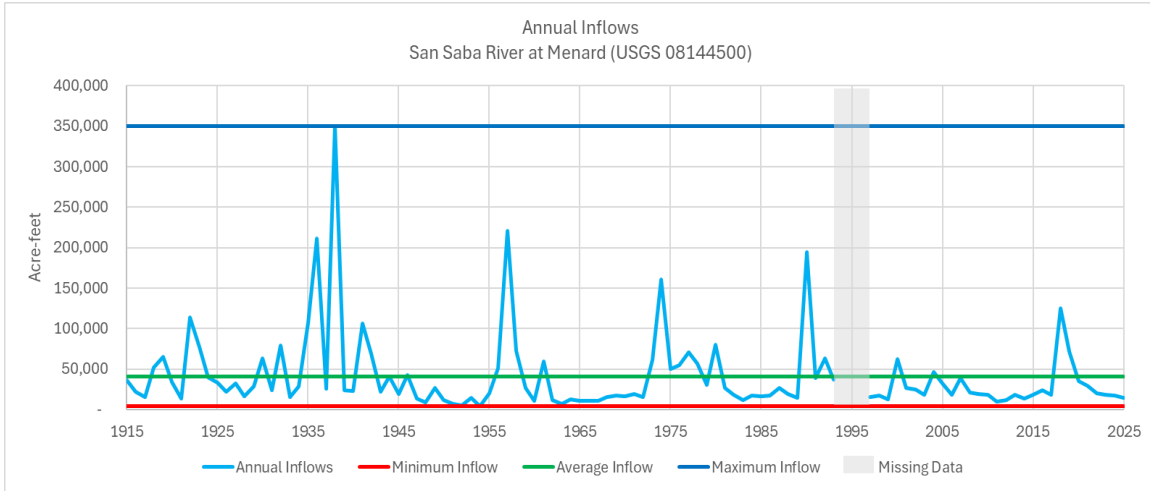


Figure 3. Annual Inflows at San Saba River at Menard gage (08144500) over the 1915-2025 period of record. (Adapted from U.S. Geological Survey, 2026).

Table 1. provides a summary of the ten lowest and highest annual inflows recorded at the San Saba River at Menard gage (08144500), over the 1915-2025 period of record. The data shows that the lowest inflows occurred during the 1950s and 1960s, which are widely acknowledged as periods of severe drought.

Table 1. Historic Lowest and Highest Inflows for the San Saba River at Menard, TX (USGS Gage 08144500; Adapted from U.S. Geological Survey, 2026).

| <b>Lowest Years</b> | <b>Streamflow (Acre-Foot)</b> |  | <b>Highest Years</b> | <b>Streamflow (Acre-Foot)</b> |
|---------------------|-------------------------------|--|----------------------|-------------------------------|
| 1954                | 4,279                         |  | 1938                 | 349,597                       |
| 1952                | 4,925                         |  | 1957                 | 220,762                       |
| 1951                | 6,826                         |  | 1936                 | 210,959                       |
| 1963                | 7,026                         |  | 1990                 | 194,407                       |
| 1948                | 8,737                         |  | 1974                 | 160,662                       |
| 2011                | 9,480                         |  | 2018                 | 124,785                       |
| 1967                | 10,540                        |  | 1922                 | 114,246                       |
| 1960                | 10,632                        |  | 1935                 | 107,155                       |
| 1965                | 11,105                        |  | 1941                 | 106,268                       |
| 1966                | 11,117                        |  | 1980                 | 80,279                        |

**Underflow**

Groundwater and surface water are regulated under different statutes by different entities. Groundwater is regulated by Groundwater Conservation Districts (GCD) and surface water is regulated by TCEQ.

Underflow is included in the definition of state water in TWC Chapter 11 and is specifically defined in TCEQ’s water rights rules:

30 Texas Administrative Code § 297.1(57) Underflow of a stream

Water in sand, soil, and gravel below the bed of the watercourse, together with the water in the lateral extensions of the water-bearing material on each side of the surface channel, such that the surface flows are in contact with the subsurface flows, the latter flows being confined within a space reasonably defined and having a direction corresponding to that of the surface flow.

Underflow generally occurs in alluvial deposits of sand, silt, gravel, or a mix thereof. The definition of underflow includes a directional component, i.e., it flows in the same direction as the surface flow. Therefore, a hydrologic connection alone, such as occurs when groundwater and surface water interact, does not meet the water rights definition for underflow of a stream. Depending on the volume of river flow, a river can lose water to storage in the river banks or can gain water when storage in the riverbanks seeps into the river. This type of interaction typically does not meet the directional requirement in the rule and is not regulated by TCEQ.

**Drought Conditions**

As discussed above, the San Saba watershed experiences periodic drought conditions characterized by low rainfall. The Standardized Precipitation Index (SPI) measures how often rainfall deviates from the long-term average over time. The 9-Month SPI is an indicator of rainfall patterns over a medium time scale because drought conditions can often take longer than a season to develop. Figure 4. below shows the pattern of drier and wetter rainfall conditions for Menard County in the San Saba River watershed for the period from 1895 to 2025. The red colors indicate drier conditions, and the blue colors indicate wetter conditions with darker colors representing more intense dry or wet conditions.

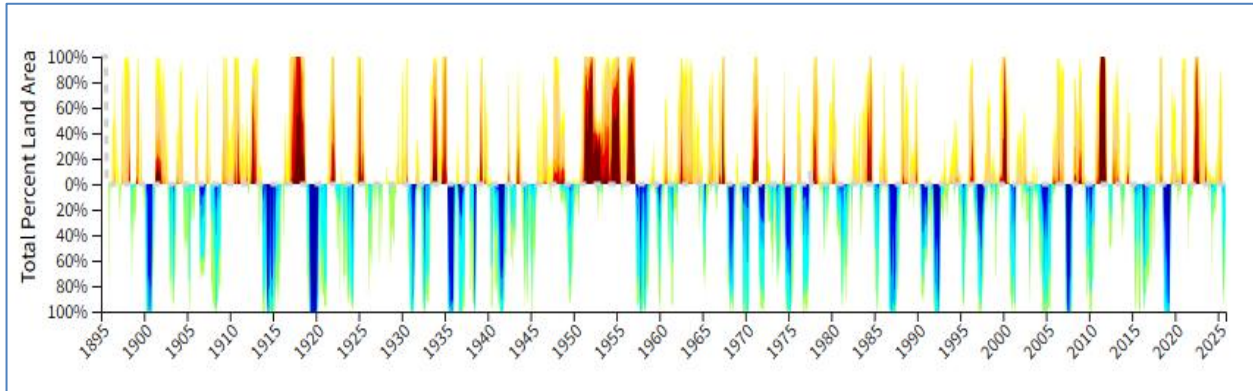


Figure 4. 9-Month Standardized Precipitation Index (SPI) for Menard County (Source: National Integrated Drought Information System, 2026)

Figure 5. below, illustrates the historic droughts within the San Saba River watershed (HUC 12090109) from January 2000 through 2026. The data shows frequent periods of extreme (red) and exceptional (dark maroon) drought, most notably in 2011, when nearly the entire watershed experienced severe water stress.

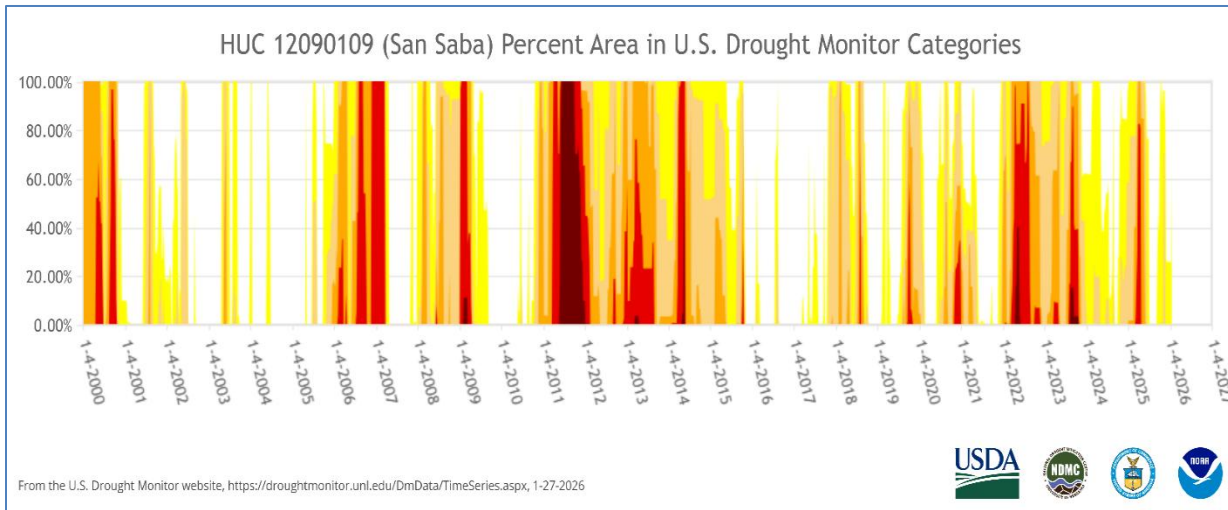


Figure 5. Drought Conditions in San Saba Watershed in Texas from 2000 - early 2026 (Source: U.S. Drought Monitor; National Drought Mitigation Center, et al., 2026)

### ***Streamflow Measurements***

TCEQ staff began conducting streamflow monitoring at six monitoring sites on the Upper San Saba River. All streamflow monitoring and observations were conducted at locations with public access. The monitoring sites are shown in Figure 6. and described as follows:

- FM 864 Crossing: located near Fort McKavett, Texas.
- US Hwy 83 Bridge Crossing: located in Menard, Texas.
- Five Mile Crossing: located east of Menard, Texas on FM 2092.
- Ten Mile Crossing: located east of Menard, Texas on FM 2092.
- FM 1311 Crossing: located between Menard and Brady, Texas.
- US HWY 87 Bridge Crossing: located south of Brady Texas.

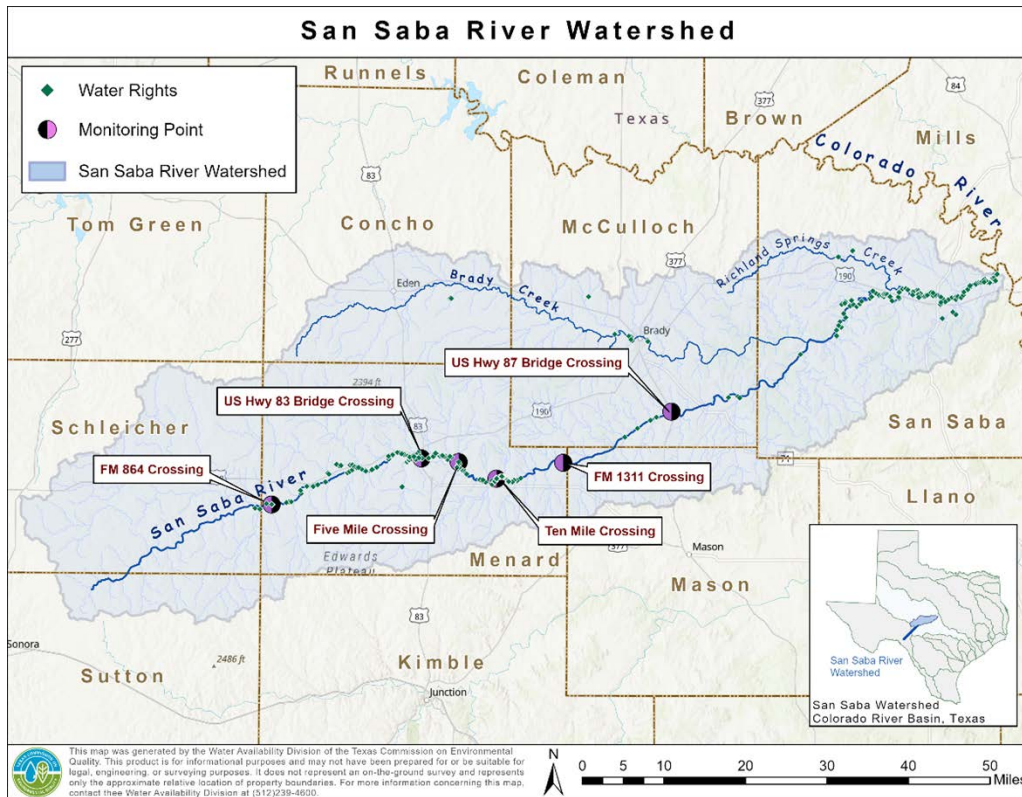


Figure 6. Streamflow monitoring locations on the San Saba River.

Monitoring at each site included observing the river, collecting streamflow measurements at sites without monitoring devices, and observing river conditions. Results of the initial monitoring are shown in Table 2. below. TCEQ staff will monitor streamflows on a monthly basis and update this report as new information becomes available.

Table 2. Streamflow Monitoring

| Location                  | Date     | Streamflow<br>(cubic feet per second) | Additional Observations   |
|---------------------------|----------|---------------------------------------|---|
| FM 864 Crossing           | 2/3/2026 | 12.66                                 |   |
| US Hwy 83 Bridge Crossing | 2/3/2026 | 49.1                                  | USGS Gage location  |
| 5 Mile Crossing           | 2/3/2026 | N/A                                   | Flow could not be measured due to unsafe conditions from debris |
| 10 Mile Crossing          | 2/3/2026 | 39.6                                  |   |
| FM 1311                   | 2/3/2026 | 37.94                                 |   |
| US Hwy 87 Bridge Crossing | 2/3/2026 | 46.0                                  | LCRA Hydromet Site  |

# Groundwater Resources

## TCEQ's Role

In Texas, groundwater is regulated at the local level through Groundwater Conservation Districts - or GCDs. A GCD's powers and duties are governed by its enabling legislation and/or TWC Chapter 36. TCEQ has limited roles relating to GCDs. TCEQ's oversight role includes investigation of a GCD and implementing enforcement actions in specific circumstances. TCEQ's enforcement consists of voluntary compliance agreements or enforcement orders directing specific actions within established timeframes.

TCEQ also conducts the Petition for Inquiry process. Under Chapter 36, an affected person can request an inquiry into a GCD for specific reasons. If TCEQ determines that the petitioner has presented sufficient evidence to warrant an inquiry, the commission will appoint a review panel to investigate. The review panel submits a report to TCEQ with recommendations and the commission may issue orders.

## General Geology

The San Saba watershed has varying geology influenced by proximity to the Llano Uplift of central Texas. The uplift is a massive body of igneous rock (primarily granite and schist) that pushed up into the sedimentary layers above without breaking the surface. Over time, the overlying layers weathered away from the higher parts, exposing the granite and other rocks in the region. The geology of the San Saba watershed is shown in Figure 7. below.

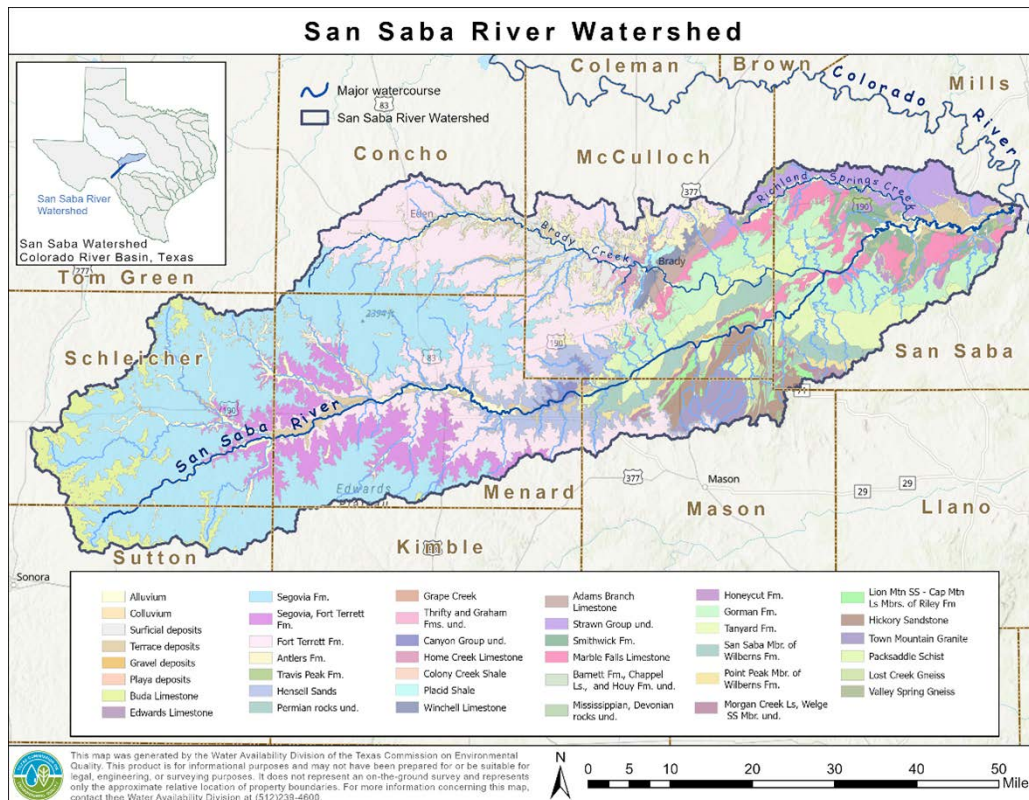


Figure 7. Geology of the San Saba Watershed

The eastern portion of the watershed, nearer the uplift, includes granite at depths around seven hundred feet in some wells, overlain by schist, weathered granite, and sedimentary layers. Aquifers include the Hickory, Ellenburger-San Saba, Marble Falls, and Edwards-Trinity, with Quaternary Terrace Deposits. Springs are more common in this area, and shallow alluvial wells are fewer despite a greater alluvium extent near San Saba.

The central portion of the watershed includes a highly faulted and jointed area near the southern border of McCulloch and San Saba Counties. This is typical for the edge of the Llano Uplift, where sedimentary beds cover the outer portion of the uplift. This is also likely why much less alluvium is present in this area. Much of the outcrop includes Ellenburger-San Saba limestone and dolomite, Hickory Sandstone, Quaternary Terrace deposits, and a few small areas of other formations.

In the western portion of the watershed, the volume of alluvium picks up again, as does the Quaternary Terrace Deposits. The Edwards-Trinity Aquifer includes several formations, including the Fort Terret limestone and dolomite and Hensel sand. The northern part of the Edwards Plateau is here and was part of a shallow sea in Cretaceous times. Limestone, sandstone, and shale are exposed along the San Saba River.

### Aquifers

There are four aquifers and the alluvium (not officially recognized as an aquifer) that supply groundwater to springs and the San Saba River. The aquifers include the Hickory, Ellenburger-San Saba, Marble Falls, and Edwards-Trinity. The Hickory sandstone is the primary aquifer in the eastern area, and the Edwards-Trinity Aquifer is the primary aquifer in the western area of the watershed.

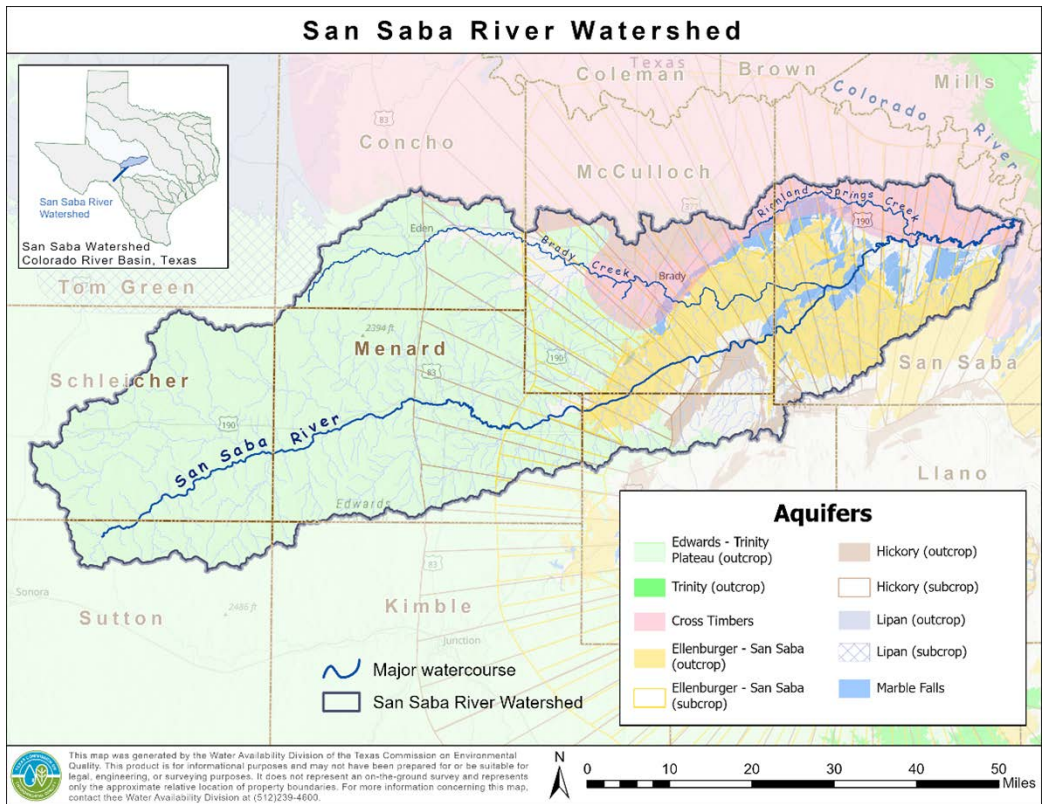


Figure 8. Major and Minor Aquifers in the San Saba Watershed

Menard and Schleicher Counties are primarily supplied by the Edwards-Trinity Aquifer. The Edwards-Trinity also has springs that contribute to the baseflow of the river. The Edwards-Trinity Aquifer is composed of limestone and dolomite, with cherty zones. The aquifer ranges from 100 -300 feet thick except in the northwest corner of the county. The Ellenburger is a dolomite formation that crops out in small areas along the San Saba River.

The other main groundwater-bearing unit in the upstream part of the watershed is the alluvial material along the San Saba River. The alluvial material is composed of sand, gravel, silt, and clay, and sometimes limestone cobbles or boulders. These materials are eroded from the areas surrounding the river or washed downstream during heavier precipitation events. Depths range from inches to sixty feet, with typical well depths between 20 and 40 feet.

The downstream portion of the watershed, which stretches from near the southern border of McCulloch County to Harkeyville (just west of San Saba), is primarily supplied by the Hickory Aquifer. The Hickory Aquifer is an undivided sandstone formation of the Strawn Group. It is thickest (480 feet) in southwest McCulloch County but extensive block faulting in the southern part of the county compartmentalizes the water. The Ellenburger-San Saba Aquifer supplies most of the water for the city of San Saba. The Marble Falls Aquifer is primarily in San Saba and McCulloch Counties, and numerous large springs in this aquifer provide baseflow to the San Saba River in McCulloch County. The Edwards-Trinity only produces a limited amount of groundwater in the area.

The alluvium becomes discontinuous from the eastern edge of Menard County to San Saba County. Many wells in San Saba County are in the Marble Falls and Ellenburger Aquifers. Even along the San Saba River, there are few wells in the alluvium, and many are in the Ellenburger or Marble Falls Aquifers at deeper depths than the limited number of alluvial wells.

## **Groundwater Conservation Districts in the San Saba Watershed**

GCDs are the state's preferred method of groundwater management to protect property rights, balance the conservation and development of groundwater to meet the needs of this state, and use best available science in the conservation and development of groundwater through rules adopted by the districts. The GCDs that intersect the San Saba watershed are Menard County Underground Water Conservation District (UWCD), Hickory UWCD No. 1, Plateau Underground Water Conservation and Supply District (UWCSD), Sutton County UWCD, Kimble County GCD, and Lipan Kickapoo Water Conservation District (WCD). Menard County UWCD and Hickory UWCD No. 1 regulate most of the watershed.

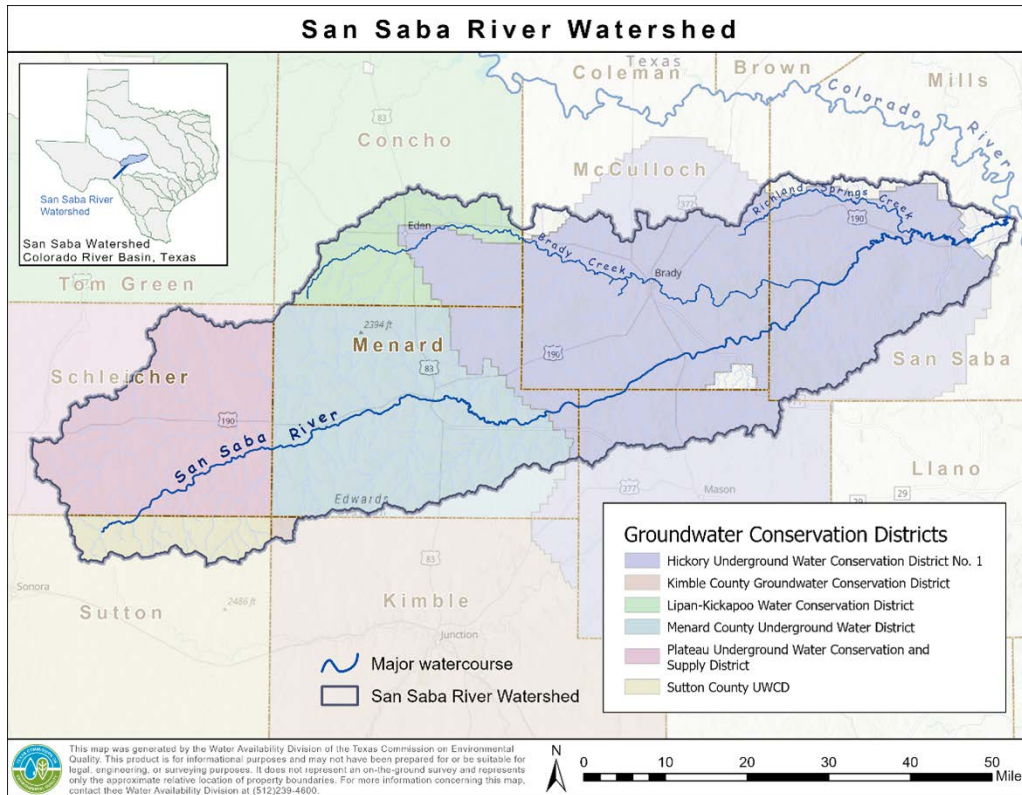


Figure 9. Groundwater Conservation Districts in the San Saba Watershed

Most of the districts were created by the Legislature. Menard County UWCD, Sutton County UWCD, and Lipan Kickapoo WCD were granted additional authority by their enabling legislation but none of those additional powers allow them greater authority over production of groundwater. Hickory UWCD No. 1 was created by TCEQ through the Landowner Petition process and was given all the powers and duties of TWC Chapter 36. All the GCDs in the watershed are supported by *ad valorem* taxes.

The Menard County UWCD, formed in 1999, joined with state and regional planning groups, and completed their first Management Plan in 2001. Their most recent Management Plan was adopted in 2022 and extends through 2027. Their latest available Annual Report is for 2024. These documents detail available surface water and groundwater resources, historical and current use, projected supplies and demands, recharge, and management methods. The most recent Management Plan goals include addressing conjunctive surface water and groundwater interaction and issues.

The Hickory UWCD No. 1, formed in 1982, and covers several counties in the eastern portion of the San Saba River watershed. It is much larger than the Menard County UWCD. Their most recent Management Plan was adopted in 2024 and extends through 2029. Both districts belong to the Region 7 Groundwater Management Area.

# Appendix A: Water Rights in the San Saba River Watershed

| Water Right Type* | Water Right Number | Diversion Amount | Priority Date | Use                                | Owner  |
|-------------------|--------------------|------------------|---------------|------------------------------------|--|
| ADJ               | 1765               | 38               | 06/29/1914    | AGRICULTURE                        | LIVE OAK PINE ENTERPRISES, INC.  |
| ADJ               | 1766               | 3                | 04/02/1970    | MINING                             | MOBLEY ENVIRONMENTAL SERVICES, INC.  |
| ADJ               | 1767               | 8                | 1969          | AGRICULTURE                        | DLH FAMILY LLC   |
| ADJ               | 1768               | 50               | 01/01/1967    | AGRICULTURE,<br>VOLUNTARY INSTREAM | TEXAS SOUTHWEST COUNCIL, INC., BOY<br>SCOUTS OF AMERICA                              |
| ADJ               | 1769               | 125              | 06/22/1914    | AGRICULTURE                        | HERBERT H MEARS JR TESTAMENTARY<br>TRUST   |
| ADJ               | 1770               | 60               | 06/23/1914    | AGRICULTURE                        | BLOUNT, ELIZABETH MCGOWAN,<br>MCGOWAN, ANNE B, MCGOWAN, CALVIN W,<br>MCGOWAN, JANE P |
| ADJ               | 1771               | 126              | 03/13/1916    | AGRICULTURE                        | BLOUNT, ELIZABETH MCGOWAN,<br>MCGOWAN, ANNE B, MCGOWAN, CALVIN W,<br>MCGOWAN, JANE P |
| ADJ               | 1772               | 60               | 06/23/1914    | AGRICULTURE                        | SAMMIE JEANNE ESPY TRUSTEE   |
| ADJ               | 1773               | 260              | 1922          | AGRICULTURE                        | SAMMIE JEANNE ESPY TRUSTEE   |
| ADJ               | 1774               | 2.835            | 1964          | AGRICULTURE                        | GOODE, LOUISE  |
| ADJ               | 1774               | 0.165            | 1964          | AGRICULTURE                        | DUNCAN, CAROLE ANN, DUNCAN,<br>SHERIDAN L  |
| ADJ               | 1775               | 17               | 1954          | AGRICULTURE                        | D.W. PETERS & SONS RANCH, INC.   |
| ADJ               | 1776               | 2                | 1915          | AGRICULTURE                        | WALTON, DONNA L  |

| Water Right Type* | Water Right Number | Diversion Amount | Priority Date | Use                   | Owner  |
|-------------------|--------------------|------------------|---------------|-----------------------|--|
| ADJ               | 1776               | 4                | 1915          | AGRICULTURE           | HUGHES PAULA BRADFORD TRUST  |
| ADJ               | 1776               | 2                | 1915          | AGRICULTURE           | LAWLER, CHERYL A   |
| ADJ               | 1777               | 74.83            | 08/19/1974    | AGRICULTURE           | MENARD BLUE HILLS RANCH, LLC   |
| ADJ               | 1777               | 51.17            | 08/19/1974    | AGRICULTURE           | PFLUGER, ADDISON LEE   |
| ADJ               | 1778               | 180              | 1939          | AGRICULTURE           | JAMES L. POWELL 1988 TRUST, POWELL, JAMES L  |
| ADJ               | 1779               | 13.3             | 1882          | AGRICULTURE           | LARRY W. BALE, TERESA BALE   |
| ADJ               | 1779               | 23.58            | 1882          | AGRICULTURE           | WILLIAMS, BOBBY DEAN   |
| ADJ               | 1779               | 11.12            | 1882          | AGRICULTURE           | MARGARET MAUREEN HODGES, WILLIAM BATTIS HODGES   |
| ADJ               | 1779               |                  | 1882          | AGRICULTURE           | LARRY W. BALE, TERESA BALE, WILLIAMS, BOBBY DEAN, MARGARET MAUREEN HODGES, WILLIAM BATTIS HODGES |
| ADJ               | 1780               | 6                | 1882          | AGRICULTURE           | PEGGY LYNN CARNAHAN  |
| ADJ               | 1781               | 46               | 06/26/1914    | AGRICULTURE           | JAMES L. POWELL 1988 TRUST, POWELL, JAMES L  |
| ADJ               | 1782               | 31               | 1896          | AGRICULTURE, INSTREAM | BEYER BLACKSMITH LLC   |
| ADJ               | 1783               | 10               | 1904          | AGRICULTURE           | JP FAMILY LIMITED PARTNERSHIP  |
| ADJ               | 1783               | 50               | 1904          | AGRICULTURE           | GREGORY S. SPENCER   |
| ADJ               | 1783               | 10               | 1904          | AGRICULTURE           | JOHN AND KATHERINE KNIFFEN REVOCABLE LIVING TRUST  |

| Water Right Type* | Water Right Number | Diversion Amount | Priority Date | Use   | Owner   |
|-------------------|--------------------|------------------|---------------|---|---|
| ADJ               | 1783               | 40               | 1904          | AGRICULTURE                                   | BARBARA WINN LUNDGREN, DOUGLAS LUNDGREN, GWYNNE KAY LUNDGREN, MAYON GOODRICH NEEL, HELEN NEEL SHELTON |
| ADJ               | 1783               | 90               | 1904          | AGRICULTURE, INSTREAM                         | STEVE L. HOLIFIELD SR.  |
| ADJ               | 1784               | 108              | 06/26/1914    | AGRICULTURE, INSTREAM                         | JACQUELYN WHELESS BAKER   |
| ADJ               | 1785               | 69               | 1956          | AGRICULTURE                                   | HELEN VERNELL S. SLAUGHTER, MARTHA HELEN SLAUGHTER CRUMP  |
| ADJ               | 1786               | 48               | 06/20/1914    | AGRICULTURE                                   | DENISA L. MCBEE, JAMES S. MCBEE   |
| ADJ               | 1787               | 122              | 06/18/1914    | AGRICULTURE, INSTREAM                         | SUSAN H. WHELESS  |
| ADJ               | 1788               | 55               | 06/13/1914    | AGRICULTURE                                   | MENZIES, JAMES W  |
| ADJ               | 1789               | 4890             | 03/29/1905    | AGRICULTURE, DOMESTIC AND LIVESTOCK, INSTREAM | MENARD COUNTY WATER CONTROL AND IMPROVEMENT DISTRICT 1  |
| ADJ               | 1790               | 40               | 1899          | AGRICULTURE                                   | BRENT HANEY BRATTON, AMIE MARIE PREST   |
| ADJ               | 1791               | 26               | 1899          | AGRICULTURE, INDUSTRIAL                       | BRENT HANEY BRATTON, AMIE MARIE PREST   |
| ADJ               | 1792               | 43               | 1965          | AGRICULTURE                                   | BRANDI BRADFORD, CYNTHIA KROUSKUP   |
| ADJ               | 1793               | 250              | 06/27/1914    | AGRICULTURE                                   | DIAMOND K. RIVER RANCH, LP  |
| ADJ               | 1794               | 32               | 06/13/1914    | AGRICULTURE                                   | HOLIFIELD, STEVE LEMUEL   |
| ADJ               | 1795               | 177              | 1913          | AGRICULTURE, INSTREAM                         | JIM W. WRIGHT   |

| Water Right Type* | Water Right Number | Diversion Amount | Priority Date | Use                     | Owner   |
|-------------------|--------------------|------------------|---------------|-------------------------|---|
| ADJ               | 1796               | 59               | 1913          | AGRICULTURE             | JEFFREY L. CHESHIER, LUCINDA E. CHESHIER          |
| ADJ               | 1797               | 17               | 1913          | AGRICULTURE             | MARGARET KOTHMANN, STANLEY CLIFTON KOTHMANN       |
| ADJ               | 1798               | 97               | 1895          | AGRICULTURE             | KOTHMANN COMMISSION CO.                           |
| ADJ               | 1798               | 3                | 1895          | AGRICULTURE, INDUSTRIAL | LEE RUSSELL CALLAN                                |
| ADJ               | 1798               | 20               | 1895          | AGRICULTURE             | JOHN AND KATHERINE KNIFFEN REVOCABLE LIVING TRUST |
| ADJ               | 1798               | 22               | 1895          | AGRICULTURE             | CAROL G. HUSFELD, DAVID C. HUSFELD                |
| ADJ               | 1798               | 20               | 1895          | AGRICULTURE             | MENARD COUNTY                                     |
| ADJ               | 1799               | 12               | 05/18/1976    | AGRICULTURE             | WRIGHT, CAMERON M, WRIGHT, JOANNE C               |
| ADJ               | 1800               | 21               | 10/25/1976    | AGRICULTURE             | GIBSON, BARBARA C                                 |
| ADJ               | 1801               | 14               | 1925          | AGRICULTURE             | ANITA LEWIS, LEWIS, CODY                          |
| ADJ               | 1802               | 30               | 1946          | AGRICULTURE, INDUSTRIAL | MENARD COUNTY                                     |
| ADJ               | 1803               | 1016             | 06/27/1914    | MUNICIPAL/DOMESTIC      | CITY OF MENARD                                    |
| ADJ               | 1803               |                  | 06/27/1914    | RECREATION              | CITY OF MENARD                                    |
| ADJ               | 1804               | 55               | 10/15/1895    | AGRICULTURE             | WRIGHT, HOLLY P, WRIGHT, TYLER O                  |
| ADJ               | 1805               | 65               | 10/15/1895    | AGRICULTURE, INSTREAM   | CYNTHIA C. KELLEY, TERRELL T. KELLEY              |
| ADJ               | 1806               | 24.16            | 10/15/1895    | AGRICULTURE             | DIANNA STRAND JOINER, JOINER, MICHAEL             |

| Water Right Type* | Water Right Number | Diversion Amount | Priority Date | Use                             | Owner  |
|-------------------|--------------------|------------------|---------------|---------------------------------|--|
| ADJ               | 1806               | 21.93            | 10/15/1895    | AGRICULTURE                     | BILLY A. KNIFFEN   |
| ADJ               | 1806               | 27.91            | 10/15/1895    | AGRICULTURE                     | JO ROSENTHAL, TIMOTHY ROSENTHAL  |
| ADJ               | 1806               | 6                | 10/15/1895    | AGRICULTURE                     | JOHN AND KATHERINE KNIFFEN REVOCABLE LIVING TRUST, ELIZABETH ANN KNIFFEN, NOVICE C. KNIFFEN  |
| ADJ               | 1807               | 3                | 04/02/1970    | MINING                          | MOBLEY ENVIRONMENTAL SERVICES, INC.  |
| ADJ               | 1808               | 23               | 1911          | AGRICULTURE                     | SPENERGY CORP.   |
| ADJ               | 1809               | 52               | 06/26/1914    | AGRICULTURE                     | SPENCER, RICHARD F, SPENCER, SHARON S  |
| ADJ               | 1810               | 60               | 06/26/1914    | AGRICULTURE                     | DICKERSON, AMY LAREE   |
| ADJ               | 1811               | 250              | 1892          | AGRICULTURE                     | RAMBO, JERRY MANN  |
| ADJ               | 1811               | 60               | 1892          | AGRICULTURE, VOLUNTARY INSTREAM | MENARD COUNTY UNDERGROUND WATER DISTRICT   |
| ADJ               | 1812               | 11               | 1955          | AGRICULTURE                     | NELDA JEAN PARDUE  |
| ADJ               | 1812               | 13               | 1955          | AGRICULTURE                     | GREEN, GERIANN F   |
| ADJ               | 1813               | 23               | 1925          | AGRICULTURE                     | CHENAULT, CHARLES BLAKE  |
| ADJ               | 1814               | 80               | 1912          | AGRICULTURE                     | CARA L. CROCKER, LINDA M. CROCKER, MEGAN L. CROCKER, LAUREN M. HARRIS, MENZIES RESIDUAL TRUST, JOHN S. MENZIES, HARRIS G. NAPIER III, BRYCE G. MENZIES SIRMONS |
| ADJ               | 1815               | 100              | 08/08/1893    | AGRICULTURE                     | SCALP CREEK RANCHES, L.L.C.  |
| ADJ               | 1815               | 50               | 08/08/1893    | AGRICULTURE                     | ROLL, LONA J, ROLL, RICHARD D  |
| ADJ               | 1816               | 20               | 1882          | AGRICULTURE                     | SCALP CREEK RANCHES, L.L.C.  |

| Water Right Type* | Water Right Number | Diversion Amount | Priority Date | Use                    | Owner   |
|-------------------|--------------------|------------------|---------------|------------------------|---|
| ADJ               | 1816               | 22               | 1882          | AGRICULTURE            | COATES, NAN D, COATES, STEPHEN WAYNE, STEPHEN WAYNE COATES JR.  |
| ADJ               | 1816               | 15               | 08/08/1893    | AGRICULTURE            | COATES, NAN D, COATES, STEPHEN WAYNE, STEPHEN WAYNE COATES JR.  |
| ADJ               | 1817               | 44.5781          | 1963          | AGRICULTURE            | LEHMBERG-AUSTIN, LAURA LEE  |
| ADJ               | 1817               | 5.14             | 1963          | AGRICULTURE            | STOUT ENERGY INC.   |
| ADJ               | 1817               | 1.7              | 1963          | AGRICULTURE            | BYNUM, VIRGINIA   |
| ADJ               | 1817               | 125              | 1963          | AGRICULTURE            | MEWS, PAUL AARON, WRIGHT MEWS, KATHRYN ANN  |
| ADJ               | 1817               | 125              | 1963          | AGRICULTURE            | WRIGHT, HOLLY P, WRIGHT, TYLER O  |
| ADJ               | 1817               | 4.5819           | 1963          | AGRICULTURE            | EQUITY TRUST COMPANY DBA STERLING TRUST CUSTODIAN FBO DENNIS E. SLEDGE  |
| ADJ               | 1818               | 47.25            | 06/26/1914    | AGRICULTURE            | STOUT ENERGY INC.   |
| ADJ               | 1819               | 43.75            | 06/26/1914    | AGRICULTURE            | STOUT ENERGY INC.   |
| ADJ               | 1820               | 23               | 06/26/1914    | AGRICULTURE, INSTREAM  | HOLLAND, CHRISTINA C, HOLLAND, CHRISTOPHER L, HOLLAND, DAVID G, HOLLAND, E JAMES, HOLLAND, LAVONA JO, HOLLAND, ROBERT G |
| ADJ               | 1821               | 165              | 1952          | AGRICULTURE            | JOHN & THERESA HILLMAN FAMILY PROPERTIES, LP  |
| ADJ               | 1822               | 29               | 06/29/1914    | AGRICULTURE            | SAN SABA WATERS LP  |
| ADJ               | 1822               |                  | 06/29/1914    | DOMESTIC AND LIVESTOCK | JAMIE LYNN QUINN HAYNES, QUINN, DAVID ROSS  |

| Water Right Type* | Water Right Number | Diversion Amount | Priority Date | Use                                | Owner  |
|-------------------|--------------------|------------------|---------------|------------------------------------|--|
| ADJ               | 1822               |                  | 06/29/1914    | DOMESTIC AND LIVESTOCK, RECREATION | GRAY TV RANCH, LTD.  |
| ADJ               | 1822               | 20               | 06/29/1914    | AGRICULTURE                        | MOUNTAIN VALE, LP  |
| ADJ               | 1822               | 30               | 06/29/1914    | AGRICULTURE                        | SOUTHERN SKYE RANCH, LLC                                       |
| ADJ               | 1823               | 20               | 1931          | AGRICULTURE                        | BAKER, DIANA L, BAKER, JERRY M                                 |
| ADJ               | 1823               | 10               | 1931          | AGRICULTURE                        | M M PARTNERSHIP A TEXAS PARTNERSHIP                            |
| ADJ               | 1823               | 10               | 1931          | AGRICULTURE                        | DOYLE, BILL, DOYLE, SANDRA                                     |
| ADJ               | 1823               | 150              | 1931          | AGRICULTURE                        | COATES, NAN D, COATES, STEPHEN WAYNE                           |
| ADJ               | 1823               | 5                | 1931          | AGRICULTURE                        | RIGGS, BARBARA, RIGGS, MARVIN                                  |
| ADJ               | 1824               | 30               | 06/26/1914    | AGRICULTURE                        | BILLIE ANNE MARTIN, IVA MARIE SCRUGGS                          |
| ADJ               | 1825               | 105              | 06/06/1914    | AGRICULTURE                        | ANGLE INVESTMENTS, LLC   |
| ADJ               | 1825               | 45               | 06/08/1914    | AGRICULTURE                        | ANGLE INVESTMENTS, LLC   |
| ADJ               | 1826               | 139.54           | 06/26/1914    | AGRICULTURE                        | COATES, NAN D, COATES, STEPHEN WAYNE, STEPHEN WAYNE COATES JR. |
| ADJ               | 1826               | 40.46            | 06/26/1914    | AGRICULTURE                        | JOHN AND THERESA HILLMAN FAMILY PROPERTIES, LP                 |
| ADJ               | 1826               | 245              | 1931          | AGRICULTURE                        | COATES, NAN D, COATES, STEPHEN WAYNE, STEPHEN WAYNE COATES JR. |
| ADJ               | 1827               | 52               | 06/06/1914    | AGRICULTURE                        | EL SUENO RIVER RANCH, LLC                                      |

| Water Right Type* | Water Right Number | Diversion Amount | Priority Date | Use                   | Owner  |
|-------------------|--------------------|------------------|---------------|-----------------------|--|
| ADJ               | 1828               | 64               | 06/01/1914    | AGRICULTURE, INSTREAM | JOHN & THERESA HILLMAN FAMILY PROPERTIES, LP                     |
| ADJ               | 1829               | 45               | 11/25/1974    | AGRICULTURE           | PHILLIPS, DOUGLAS, PHILLIPS, LINDA                               |
| ADJ               | 1830               | 15               | 1961          | AGRICULTURE           | PHILLIPS, CHAD, PHILLIPS, COBY                                   |
| ADJ               | 1831               | 31               | JANUARY, 1904 | AGRICULTURE           | ISOM, DONNA, ISOM, LARRY   |
| ADJ               | 1832               | 57               | JANUARY, 1904 | AGRICULTURE           | MARIA G. SALAZAR, PORFIRIO SALAZAR                               |
| ADJ               | 1833               | 17               | 1904          | AGRICULTURE           | ANGELA JAMESON BIERMAN, RAY BRENT JAMESON, RODNEY BENTON JAMESON |
| ADJ               | 1834               | 11               | 1904          | AGRICULTURE           | ANGELA JAMESON BIERMAN, RAY BRENT JAMESON, RODNEY BENTON JAMESON |
| ADJ               | 1835               | 24               | 06/08/1914    | AGRICULTURE           | HOLMES, MARTHA ANNE  |
| ADJ               | 1836               | 15               | 06/25/1914    | AGRICULTURE           | BRIAN DAY, REGINA DAY  |
| ADJ               | 1836               | 15               | 06/25/1914    | AGRICULTURE           | JERRY DON CRISP  |
| ADJ               | 1837               | 14               | 06/08/1914    | AGRICULTURE           | AMADOR PANDO, TONI PANDO   |
| ADJ               | 1838               | 12               | 06/25/1914    | AGRICULTURE           | PHILLIPS, DOUGLAS  |
| ADJ               | 1839               | 9                | 06/08/1914    | AGRICULTURE           | DANIEL DAMON   |
| ADJ               | 1840               | 75               | 1895          | AGRICULTURE, INSTREAM | LEESA S. BLAU, BLAU, MARK E                                      |

| Water Right Type* | Water Right Number | Diversion Amount | Priority Date  | Use                            | Owner   |
|-------------------|--------------------|------------------|----------------|--------------------------------|---|
| ADJ               | 1841               | 3                | 02/19/1913     | AGRICULTURE                    | BENJAMIN CUNNINGHAM, PAMELA CUNNINGHAM                          |
| ADJ               | 1841               | 120              | 02/19/1913     | AGRICULTURE                    | CAROL G. HUSFELD, DAVID C. HUSFELD                              |
| ADJ               | 1841               | 1                | 02/19/1913     | RECREATION                     | MAHAN, CAROL, MAHAN, TANNER                                     |
| ADJ               | 1841               | 1                | 02/19/1913     | RECREATION                     | WRIGHT, HOLLY P, WRIGHT, TYLER O                                |
| ADJ               | 1841               |                  | 09/13/2013     | RECREATION                     | MAHAN, CAROL, MAHAN, TANNER, WRIGHT, HOLLY P, WRIGHT, TYLER O   |
| ADJ               | 1842               | 15               | 02/19/1913     | AGRICULTURE                    | MIDKIFF FAMILY PROPERTIES, LLC                                  |
| ADJ               | 1843               |                  | 05/20/1974     | RECREATION                     | GRAY TV RANCH, LTD.   |
| ADJ               | 1844               | 30               | NOVEMBER, 1955 | AGRICULTURE                    | DWIGHT P. WILLIAMS, RAE MARIE WILLIAMS                          |
| ADJ               | 1845               | 64               | 10/13/1914     | AGRICULTURE                    | MARY A. DONLEY  |
| ADJ               | 1846               | 36               | AUGUST, 1963   | AGRICULTURE                    | BETH HALL INHERITANCE TRUST, DAVE R. EDMISTON, GENE E. EDMISTON |
| ADJ               | 1847               | 200              | 1951           | AGRICULTURE                    | ABELL RANCHES, LP   |
| ADJ               | 1848               | 31.25            | 04/13/1959     | AGRICULTURE                    | DAVID RAY RABON   |
| ADJ               | 1848               | 68.75            | 04/13/1959     | AGRICULTURE                    | DAVID RAY RABON, SUE SPISER RABON                               |
| ADJ               | 1849               | 3500             | 09/02/1959     | INDUSTRIAL, MUNICIPAL/DOMESTIC | CITY OF BRADY   |
| ADJ               | 1850               | 90               | 03/30/1964     | AGRICULTURE                    | KOY, BERNICE  |

| Water Right Type* | Water Right Number | Diversion Amount | Priority Date | Use         | Owner   |
|-------------------|--------------------|------------------|---------------|-------------|---|
| ADJ               | 1851               | 121              | 1964          | AGRICULTURE | DOUGLAS SHANE RICHARDSON, GLENDA GAIL RICHARDSON      |
| ADJ               | 1852               | 8                | 1955          | AGRICULTURE | JACOBY AND JACOBY, INC.                               |
| ADJ               | 1853               |                  | 09/23/1914    | RECREATION  | CITY OF BRADY   |
| ADJ               | 1854               | 18.105           | 1948          | AGRICULTURE | LARRY SHAY HOWARD                                     |
| ADJ               | 1854               | 21.895           | 1948          | AGRICULTURE | HOWARD, NANCY D                                       |
| ADJ               | 1856               | 4.839            | 06/24/1914    | AGRICULTURE | HAWKINS, KATHLEEN                                     |
| ADJ               | 1856               | 13.441           | 06/26/1914    | AGRICULTURE | HAWKINS, KATHLEEN                                     |
| ADJ               | 1856               | 4.161            | 06/24/1914    | AGRICULTURE | JUDY DUNNEGAN   |
| ADJ               | 1856               | 11.559           | 06/26/1914    | AGRICULTURE | JUDY DUNNEGAN   |
| ADJ               | 1857               | 6                | 06/24/1914    | AGRICULTURE | HAWKINS, KATHLEEN                                     |
| ADJ               | 1858               | 19               | 06/24/1914    | AGRICULTURE | JOHN WORTH BYRD                                       |
| ADJ               | 1859               | 171              | 06/27/1914    | AGRICULTURE | CHRISTINE DIANE POOL BESSENT, PATSY MARSCHALL STEWART |
| ADJ               | 1860               | 96               | 06/27/1914    | AGRICULTURE | BAKER, DONNA B, BAKER, LARRY                          |
| ADJ               | 1861               | 20               | 06/27/1914    | AGRICULTURE | BESSENT, CHRISTINE DIANE POOL, BESSENT, WILLARD KEITH |
| ADJ               | 1862               | 28               | 06/27/1914    | AGRICULTURE | BESSENT, CHRISTINE DIANE POOL, BESSENT, WILLARD KEITH |
| ADJ               | 1863               | 15               | 06/27/1914    | AGRICULTURE | CHURCHILL, BOBBIE, CHURCHILL, FRANK                   |
| ADJ               | 1863               | 35               | 06/27/1914    | AGRICULTURE | SHOOK, JIMMY, SHOOK, LAURA, SHOOK, NANCY              |
| ADJ               | 1864               | 7.26             | 04/25/1914    | AGRICULTURE | SHARON KAY ELLIS                                      |

| Water Right Type* | Water Right Number | Diversion Amount | Priority Date | Use         | Owner  |
|-------------------|--------------------|------------------|---------------|-------------|--|
| ADJ               | 1864               | 25.74            | 04/25/1914    | AGRICULTURE | BARBARA FOWLER, DON D. FOWLER                          |
| ADJ               | 1865               | 15               | 04/25/1914    | AGRICULTURE | DIPPEL SSRR, LLC                                       |
| ADJ               | 1866               | 93               | 1947          | AGRICULTURE | SEIDERS SAN SABA RANCH, LTD.                           |
| ADJ               | 1867               | 54               | 1935          | AGRICULTURE | JOHNSON REVOCABLE TRUST                                |
| ADJ               | 1868               | 190              | 1918          | AGRICULTURE | JOHNSON REVOCABLE TRUST                                |
| ADJ               | 1869               | 25.73            | 1925          | AGRICULTURE | ELIZABETH E. OWENS, HOMER R. OWENS                     |
| ADJ               | 1869               | 20.635           | 1925          | AGRICULTURE | AMY STENCIL, CRAIG STENCIL                             |
| ADJ               | 1869               | 20.635           | 1925          | AGRICULTURE | CASEY JOE FISHER, KRISTY LEIGH FISHER                  |
| ADJ               | 1870               | 88               | 05/02/1914    | AGRICULTURE | ELIZABETH E. OWENS, HOMER R. OWENS                     |
| ADJ               | 1871               | 120              | 1955          | AGRICULTURE | BETTY TYLENNE TERRY                                    |
| ADJ               | 1872               | 225              | 06/24/1914    | AGRICULTURE | TRIPLE "M" CATTLE CO.                                  |
| ADJ               | 1873               | 104              | 1952          | AGRICULTURE | AMBER LYNN RODRIGUEZ, SAMUEL MARTINEZ RODRIGUEZ        |
| ADJ               | 1874               | 34.1             | 1922          | AGRICULTURE | DENNIS HARDMAN, TERESA HARDMAN                         |
| ADJ               | 1874               | 0.9              | 1922          | AGRICULTURE | AMONETT, BEN F., LURA L. AMONETT, TRACY S. SCARBOROUGH |
| ADJ               | 1875               | 114              | 06/22/1914    | AGRICULTURE | CAROL SUGAR MARTIN, JOHN MARCUS MARTIN                 |

| Water Right Type* | Water Right Number | Diversion Amount | Priority Date | Use         | Owner   |
|-------------------|--------------------|------------------|---------------|-------------|---|
| ADJ               | 1876               | 112              | 1922          | AGRICULTURE | ESTATE OF RILEY C. HARKEY   |
| ADJ               | 1876               | 30               | 1922          | AGRICULTURE | CAROL ANN MARTIN, JOHN MARCUS MARTIN  |
| ADJ               | 1877               | 146              | 11/14/1914    | AGRICULTURE | WILLIAM LINN OWEN III   |
| ADJ               | 1878               | 120              | 1910          | AGRICULTURE | HIHT ORCHARD, LLC   |
| ADJ               | 1879               | 25               | 1913          | AGRICULTURE | 1970 CHILDRESS LP   |
| ADJ               | 1880               | 29               | 1956          | AGRICULTURE | EDMONDSON, CHRISTINE BAGLEY   |
| ADJ               | 1881               | 103              | 1910          | AGRICULTURE | BAGLEY, DEAN JR   |
| ADJ               | 1881               | 37.3             | 1910          | AGRICULTURE | ADAMS, CONNIE BAGLEY  |
| ADJ               | 1881               | 20.7             | 1910          | AGRICULTURE | EDMONDSON, CHRISTINE BAGLEY   |
| ADJ               | 1882               | 150              | 1919          | AGRICULTURE | CHARLES W. DICKENSON EXEMPT SEPARATE PROPERTY TRUST, RICHARD K. DICKENSON EXEMPT SEPARATE PROPERTY TRUST, RICHARD KEITH DICKENSON |
| ADJ               | 1883               | 31               | 1933          | AGRICULTURE | DORINDA LEWIS CRUMP, MARLA L LAMPP  |
| ADJ               | 1885               | 64               | 09/04/1962    | AGRICULTURE | WOOD, T N   |
| ADJ               | 1886               | 30.6             | 1911          | AGRICULTURE | LAMBERT, RICKY, LAMBERT, SUSANA   |
| ADJ               | 1886               | 4.2              | 1911          | AGRICULTURE | MIFFLETON, MAXINE   |
| ADJ               | 1886               | 4.2              | 1911          | AGRICULTURE | MCBRIDE, JOSEPHINE, MCBRIDE, RONNIE   |
| ADJ               | 1887               | 329              | 1911          | AGRICULTURE | LAMBERT, ROGER RICKY, LAMBERT, SUSANA   |

| Water Right Type* | Water Right Number | Diversion Amount | Priority Date | Use                             | Owner  |
|-------------------|--------------------|------------------|---------------|---------------------------------|--|
| ADJ               | 1888               | 88               | 1956          | AGRICULTURE                     | SLOAN LIVESTOCK, LTD   |
| ADJ               | 1889               | 41               | 1925          | AGRICULTURE                     | LINDA CAMERON SLOAN, WILSON ALLAN SLOAN  |
| ADJ               | 1890               | 434              | 1911          | AGRICULTURE                     | THE GREAT SAN SABA RIVER PECAN COMPANY, INC.   |
| ADJ               | 1891               | 24.5             | 1921          | AGRICULTURE                     | SARA JEAN CAMERON ESTATE   |
| ADJ               | 1891               | 117.5            | 1921          | AGRICULTURE, MUNICIPAL/DOMESTIC | MILLER, JOE ROGAN, CORIX UTILITIES (TEXAS) INC.  |
| ADJ               | 1892               | 52.55            | 1953          | AGRICULTURE                     | THE ESTATE OF JOHN P MCCONNELL JR  |
| ADJ               | 1892               | 180.45           | 1953          | AGRICULTURE                     | EARLY, JOHNETTE MCCONNELL, MCCONNELL, PATTY JOHNENE, THE ESTATE OF JOHN P MCCONNELL JR |
| ADJ               | 1893               | 52               | 1959          | AGRICULTURE                     | BAGLEY, DEAN JR  |
| ADJ               | 1894               | 272              | 1913          | AGRICULTURE                     | BAGLEY, GAILIAN DEAN JR  |
| ADJ               | 1895               | 48               | 1955          | AGRICULTURE                     | THE GREAT SAN SABA RIVER PECAN COMPANY, INC.   |
| ADJ               | 1896               | 64               | 1950          | AGRICULTURE                     | BAGLEY, GAILIAN DEAN JR  |
| ADJ               | 1897               | 80               | 05/16/1914    | AGRICULTURE                     | MARTIN, BETTY, MARTIN, WILTON  |
| ADJ               | 1898               | 40               | 03/30/1914    | AGRICULTURE                     | GILGER, DAVID  |
| ADJ               | 1898               | 20               | 04/24/1914    | AGRICULTURE                     | GILGER, DAVID  |
| ADJ               | 1899               | 340              | 1929          | AGRICULTURE                     | OWEN-GILGER, INC.  |
| ADJ               | 1900               | 54               | 1954          | AGRICULTURE                     | STIFFLEMIRE, STEVE D   |
| ADJ               | 1901               | 49               | 1940          | AGRICULTURE                     | BAGLEY, ROY  |
| ADJ               | 1902               | 2                | 1963          | AGRICULTURE                     | SANDERSON, GLENNETTA, SANDERSON, JOHN T  |

| Water Right Type* | Water Right Number | Diversion Amount | Priority Date | Use                                | Owner   |
|-------------------|--------------------|------------------|---------------|------------------------------------|---|
| ADJ               | 1903               | 550              | 06/29/1914    | MUNICIPAL/DOMESTIC                 | CITY OF SAN SABA  |
| ADJ               | 1904               | 5                | 1966          | AGRICULTURE                        | MILLICAN, WINSTON MIKE  |
| ADJ               | 1905               | 17.34            | 1912          | AGRICULTURE                        | TOWNSEND, L F, TOWNSEND, MARY B   |
| ADJ               | 1905               | 20.66            | 1912          | AGRICULTURE                        | TOMMY PULATIE   |
| ADJ               | 1906               | 54               | 1920          | AGRICULTURE                        | CITY OF SAN SABA  |
| ADJ               | 1907               | 198              | 1933          | AGRICULTURE                        | MCCONNELL, PATSY RAYE   |
| ADJ               | 1908               | 40               | 10/08/1914    | AGRICULTURE                        | OWEN, W L JR  |
| ADJ               | 1908               | 10               | 1930          | AGRICULTURE                        | OWEN, W L JR  |
| ADJ               | 1909               | 84               | 1963          | AGRICULTURE                        | SMITH, JOE C  |
| ADJ               | 1910               | 14               | 06/26/1914    | AGRICULTURE                        | HUBBERT, EDGAR JR, HUBBERT, LORENA  |
| ADJ               | 1911               | 95               | 1883          | AGRICULTURE                        | SHOOK, JIMMY N, SHOOK, NANCY  |
| ADJ               | 1912               | 112              | 1915          | AGRICULTURE                        | ERROL DEAN GAGE, TONY MIKE GAGE   |
| ADJ               | 1913               | 270              | 1932          | AGRICULTURE,<br>MUNICIPAL/DOMESTIC | EMMETT LEE GRUMBLES, JOHN PAT GRUMBLES, CORIX UTILITIES (TEXAS) INC.              |
| ADJ               | 1914               | 207              | 1931          | AGRICULTURE                        | BURNHAM, MARTHA OWEN, REAGAN O. BURNHAM, BURNHAM, RENICE, SPINKS, RAELENE BURNHAM |
| ADJ               | 1915               | 117              | 1918          | AGRICULTURE                        | KIM RENEE MAHAN   |

| Water Right Type* | Water Right Number | Diversion Amount | Priority Date | Use         | Owner   |
|-------------------|--------------------|------------------|---------------|-------------|---|
| ADJ               | 1915               | 103              | 1918          | AGRICULTURE | JERRY DANE MAHAN  |
| ADJ               | 1916               | 103              | 1908          | AGRICULTURE | THE PATIENCE SHANKLIN ESTATE TRUST  |
| ADJ               | 1917               | 188              | 1918          | AGRICULTURE | BURNHAM, MARTHA OWEN, REAGAN O. BURNHAM, BURNHAM, RENICE, SPINKS, RAELENE BURNHAM |
| ADJ               | 1918               | 40               | 04/25/1914    | AGRICULTURE | MIKE REAVIS, VALERIE REAVIS   |
| ADJ               | 1919               | 15               | 06/03/1914    | AGRICULTURE | 2016 SHAHAN FAMILY PARTNERSHIP, LP  |
| ADJ               | 1921               | 20               | 1904          | AGRICULTURE | SAN SABA IRREVOCABLE TRUST AGREEMENT  |
| ADJ               | 1922               | 40               | 06/03/1914    | AGRICULTURE | WAYNE R. SHAHAN   |
| ADJ               | 1924               | 49               | 1905          | AGRICULTURE | OLIVER, RAYMOND A   |
| ADJ               | 1925               | 37               | 05/30/1914    | AGRICULTURE | DANA MICHELLE FELTS, JENNIFER HOLLADAY MURRAY                                     |
| ADJ               | 1926               | 4.85             | 1905          | AGRICULTURE | OLIVER, NORMA R, OLIVER, R L JR, OLIVER, ROBERT CLEMENTS, OLIVER, TOM R           |
| ADJ               | 1926               | 0.33             | 1905          | AGRICULTURE | LANCE T. HILL, KAREN A. WELLS   |
| ADJ               | 1926               | 0.82             | 1905          | AGRICULTURE | BARBARA JOLLEY, JOSEPH JOLLEY   |
| ADJ               | 1927               | 54               | 1905          | AGRICULTURE | MARJORIE ANN O'BANON ALTIZER  |
| ADJ               | 1928               | 118              | 1905          | AGRICULTURE | MILLICAN, ELSIE   |
| ADJ               | 1929               | 53               | 1907          | AGRICULTURE | LIPTAK, WINNIFRED   |

| Water Right Type* | Water Right Number | Diversion Amount | Priority Date | Use         | Owner  |
|-------------------|--------------------|------------------|---------------|-------------|--|
| ADJ               | 2452               | 253              | 06/26/1914    | AGRICULTURE | ASHLEY D CHRISTIAN, ADELAIDE H CHURCH, OBIE D HALLUM, RALEIGH L HALLUM, NANCY E HERREN, JENNIFER A JEAN, JOHN W KEFFLER, MATTHEW L KEFFLER, LAH ENTERPRISES LIMITED PARTNERSHIP, ELLEN V LEONARD, EMILY A LEONARD, JOHN M LEONARD, LAUREN A LEONARD, MARGERY ELIZABETH LEONARD, LEONARD, ROBERT W JR, MARTHA L MOTHERAL, NANCY ALICE LEONARD INVESTMENT COMPANY, LTD., O.P. LEONARD, JR. INVESTMENT COMPANY, LTD., SAN SABA FAMILY, LLC, SAN SABA SPRINGS, LLC, THE ANTHONY 2007 IRREVOCABLE ASSET TRUST |
| ADJ               | 2452               | 750              | 11/19/1973    | AGRICULTURE | ASHLEY D CHRISTIAN, ADELAIDE H CHURCH, OBIE D HALLUM, RALEIGH L HALLUM, NANCY E HERREN, JENNIFER A JEAN, JOHN W KEFFLER, MATTHEW L KEFFLER, LAH ENTERPRISES LIMITED PARTNERSHIP, ELLEN V LEONARD, EMILY A LEONARD, JOHN M LEONARD, LAUREN A LEONARD, MARGERY ELIZABETH LEONARD, LEONARD, ROBERT W JR, MARTHA L MOTHERAL, NANCY ALICE LEONARD INVESTMENT COMPANY, LTD., O.P. LEONARD, JR. INVESTMENT COMPANY, LTD., SAN SABA FAMILY, LLC, SAN SABA SPRINGS, LLC, THE ANTHONY 2007 IRREVOCABLE ASSET TRUST |

| Water Right Type* | Water Right Number | Diversion Amount | Priority Date | Use         | Owner  |
|-------------------|--------------------|------------------|---------------|-------------|--|
| ADJ               | 2452               | 145              | 12/31/1864    | AGRICULTURE | ASHLEY D CHRISTIAN, ADELAIDE H CHURCH, OBIE D HALLUM, RALEIGH L HALLUM, NANCY E HERREN, JENNIFER A JEAN, JOHN W KEFFLER, MATTHEW L KEFFLER, LAH ENTERPRISES LIMITED PARTNERSHIP, ELLEN V LEONARD, EMILY A LEONARD, JOHN M LEONARD, LAUREN A LEONARD, MARGERY ELIZABETH LEONARD, LEONARD, ROBERT W JR, MARTHA L MOTHERAL, NANCY ALICE LEONARD INVESTMENT COMPANY, LTD., O.P. LEONARD, JR. INVESTMENT COMPANY, LTD., SAN SABA FAMILY, LLC, SAN SABA SPRINGS, LLC, THE ANTHONY 2007 IRREVOCABLE ASSET TRUST |
| ADJ               | 2452               | 69               | 12/31/1870    | AGRICULTURE | ASHLEY D CHRISTIAN, ADELAIDE H CHURCH, OBIE D HALLUM, RALEIGH L HALLUM, NANCY E HERREN, JENNIFER A JEAN, JOHN W KEFFLER, MATTHEW L KEFFLER, LAH ENTERPRISES LIMITED PARTNERSHIP, ELLEN V LEONARD, EMILY A LEONARD, JOHN M LEONARD, LAUREN A LEONARD, MARGERY ELIZABETH LEONARD, LEONARD, ROBERT W JR, MARTHA L MOTHERAL, NANCY ALICE LEONARD INVESTMENT COMPANY, LTD., O.P. LEONARD, JR. INVESTMENT COMPANY, LTD., SAN SABA FAMILY, LLC, SAN SABA SPRINGS, LLC, THE ANTHONY 2007 IRREVOCABLE ASSET TRUST |

| Water Right Type* | Water Right Number | Diversion Amount | Priority Date | Use         | Owner  |
|-------------------|--------------------|------------------|---------------|-------------|--|
| <b>ADJ</b>        | 2452               | 85               | 12/31/1938    | AGRICULTURE | ASHLEY D CHRISTIAN, ADELAIDE H CHURCH, OBIE D HALLUM, RALEIGH L HALLUM, NANCY E HERREN, JENNIFER A JEAN, JOHN W KEFFLER, MATTHEW L KEFFLER, LAH ENTERPRISES LIMITED PARTNERSHIP, ELLEN V LEONARD, EMILY A LEONARD, JOHN M LEONARD, LAUREN A LEONARD, MARGERY ELIZABETH LEONARD, LEONARD, ROBERT W JR, MARTHA L MOTHERAL, NANCY ALICE LEONARD INVESTMENT COMPANY, LTD., O.P. LEONARD, JR. INVESTMENT COMPANY, LTD., SAN SABA FAMILY, LLC, SAN SABA SPRINGS, LLC, THE ANTHONY 2007 IRREVOCABLE ASSET TRUST |
| <b>WRPERM</b>     | 5288               | 20               | 03/20/1990    | AGRICULTURE | JONES, TOMMY LEE   |

\* **ADJ** denotes a Certificate of Adjudication and **WRPERM** denotes a Water Right Permit

## Appendix B: Aquatic Species

| Common Name           | Genus/Species                          |
|-----------------------|--|
| River Carpsucker      | <i>Carpionodes carpio</i>              |
| Gray Redhorse         | <i>Moxostoma congestum</i>             |
| Longear Sunfish       | <i>Lepomis aquilensis (Megalotis?)</i> |
| Redbreast Sunfish     | <i>Lepomis auritus</i>                 |
| Green Sunfish         | <i>Lepomis cyanellus</i>               |
| Warmouth              | <i>Lepomis gulosus</i>                 |
| Orangespotted Sunfish | <i>Lepomis humilis</i>                 |
| Bluegill              | <i>Lepomis macrochirus</i>             |
| Redear Sunfish        | <i>Lepomis microlophus</i>             |
| Smallmouth Bass       | <i>Micropterus dolomieu</i>            |
| Largemouth Bass       | <i>Micropterus salmoides</i>           |
| Guadalupe Bass        | <i>Micropterus treculii</i>            |
| Black Crappie         | <i>Pomoxis nigromaculatus</i>          |
| Mexican Tetra         | <i>Astyanax argentatus</i>             |
| Rio Grande Cichlid    | <i>Herichthys cyanoguttatus</i>        |
| Gizzard Shad          | <i>Dorosoma cepedianum</i>             |
| Central Stoneroller   | <i>Campostoma anomalum</i>             |
| Red Shiner            | <i>Cyprinella lutrensis</i>            |
| Blacktail Shiner      | <i>Cyprinella venusta</i>              |
| Common Carp           | <i>Cyprinus carpio</i>                 |
| Texas Shiner          | <i>Notropis amabilis</i>               |
| Mimic Shiner          | <i>Notropis volucellus</i>             |
| Bullhead Minnow       | <i>Pimephales vigilax</i>              |
| Blackstripe Topminnow | <i>Fundulus notatus</i>                |
| Channel Catfish       | <i>Ictalurus punctatus</i>             |
| Flathead Catfish      | <i>Pylodictis olivaris</i>             |
| Longnose Gar          | <i>Lepisosteus osseus</i>              |
| Greenthroat Darter    | <i>Etheostoma lepidum</i>              |
| Orangethroat Darter   | <i>Etheostoma pulchellum</i>           |
| Texas Logperch        | <i>Percina carbonaria</i>              |
| Bigscale Logperch     | <i>Percina macrolepida</i>             |