

The logo for Texas Parks & Wildlife is a green square with a white border. Inside the square, the words "TEXAS", "PARKS &", and "WILDLIFE" are written in white, bold, serif capital letters, separated by horizontal white lines. The logo is positioned on the right side of a dark blue background that features a large, semi-transparent, lighter blue circular shape on the left.

TEXAS

PARKS &

WILDLIFE

Marty Kelly

Water Resources Program
Coordinator

Texas Parks and Wildlife
Department

Coastal Fisheries Division



Brazos BBASC October 10, 2024



Water Resources Program

New Water Resources Webpage

Water Resources Program



Program Summary

TPWD's mission is to manage and conserve the natural and cultural resources of Texas and provide hunting, fishing, and outdoor recreation opportunities for the use and enjoyment of present and future generations. As the agency primarily responsible for protecting the state's fish and wildlife resources, TPWD is in a unique position and has been given statutory authority to fulfill these requirements and its mission.

The Water Resources Program provides technical guidance, scientific tools, and strategies to restore and protect healthy aquatic ecosystems through collaboration with internal and external partners and stakeholders.

Every aspect of TPWD's mission is impacted by water. Texas has 191,228 miles of rivers and streams, 1,100 reservoirs, approximately 3,000 springs, 7 major and 16 minor aquifers, and 8 estuaries that span 3,359 miles of coastline and cover 2.6 million acres of estuarine habitat. There are 191 species of freshwater fish and over 200 species of marine and estuarine fish living along the Texas coast, and nearly all species of wildlife use this water to drink or as part of their natural life cycle. Texans use this water for drinking and in our homes, growing our food, in the manufacturing of goods, and to help generate power. TPWD participates in the management of water across the state.

[Water Resources Program - Conservation - Water - TPWD \(texas.gov\)](https://www.texas.gov/water-resources-program)

Water Resources Program Focal Areas



Technical Guidance and
Consultation



Planning



Stewardship



Monitoring and Research

To manage and conserve the natural and cultural resources of Texas and to provide hunting, fishing and outdoor recreation opportunities for the use and enjoyment of present and future generations.

2024 – 2033 Land and Water Resources Conservation and Recreation Plan

Objective 2 – Provide technical assistance, scientific tools, and strategies to restore and protect healthy aquatic ecosystems

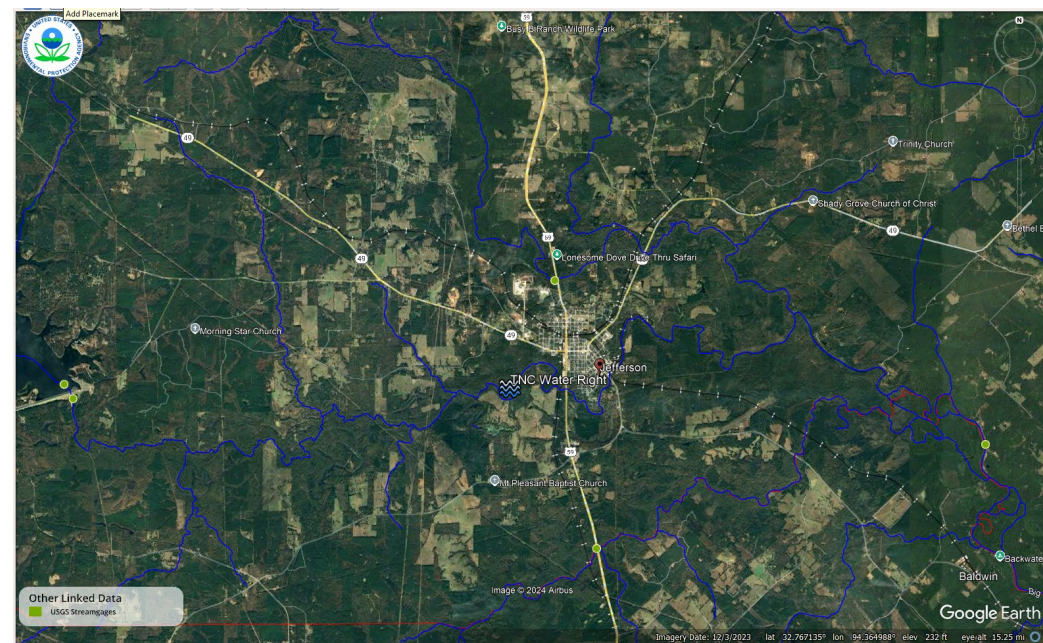
Strategy 2.7 - Foster the restoration and protection of healthy aquatic ecosystems by promoting and facilitating the voluntary transfer of water rights to the Texas Water Trust or a suitable non-profit water trust.

Action 2.3 – Facilitate eight voluntary environmental water transactions, flow agreements, or water level agreements by 2033 that focus on conserving fish and wildlife resources and enhancing outdoor recreation opportunities.

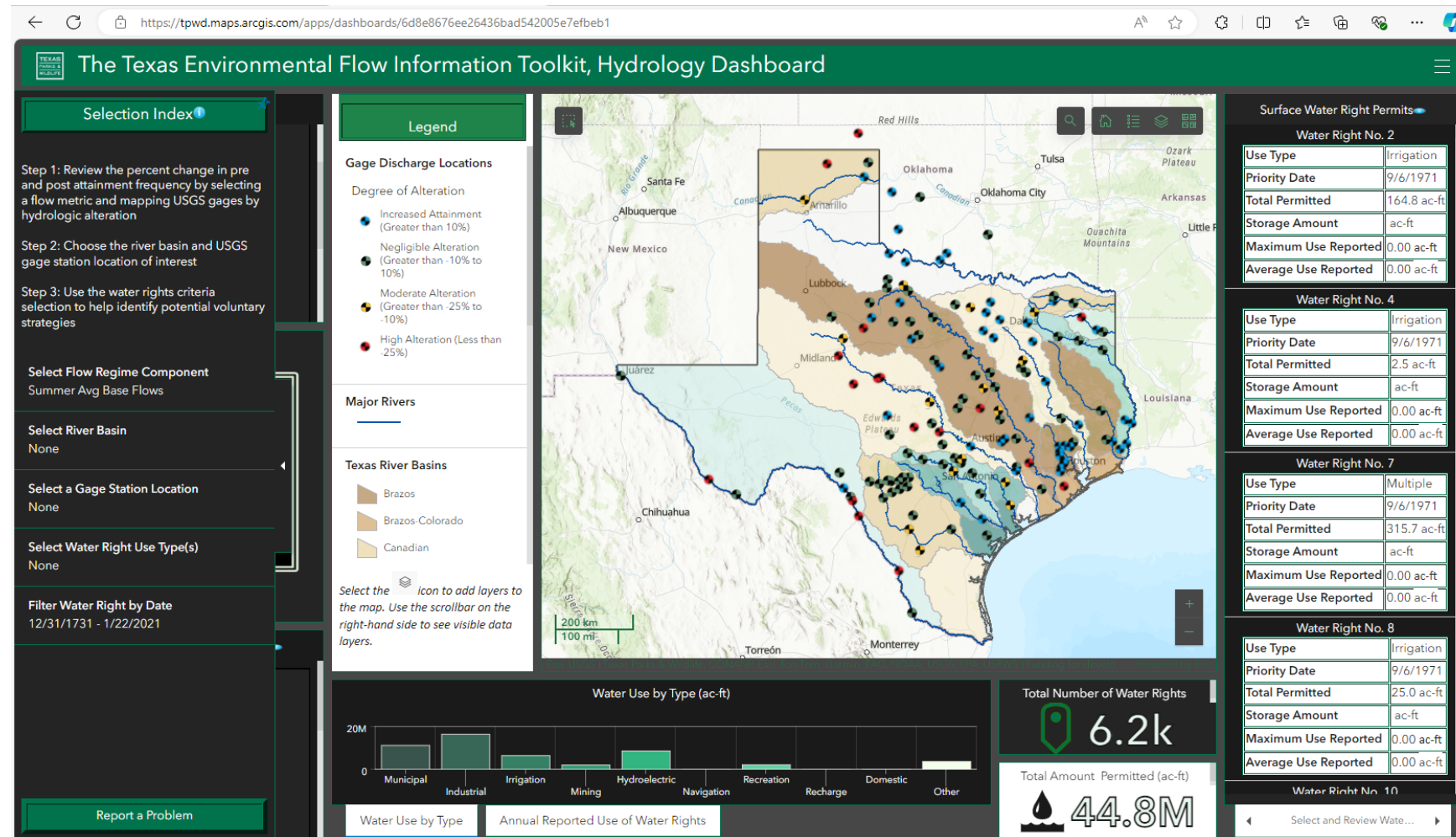
TPWD's Role in the Texas Water Trust

- House Bill 2225 (87th Legislature)
- Texas Water Code 15.7031
 - The Parks and Wildlife Dept. may manage rights in the Trust
- Parks and Wildlife Code 12.028
 - “the Department shall encourage and facilitate the dedication of water rights in the Texas Water Trust through lease, donation, purchase, or other means of voluntary transfer for environmental needs...”

Current TPWD Water Transaction Projects



Environmental Flow Information Toolkit (EFIT)



Hydrological Analysis

143 USGS Gages

- Period of analysis is 20 years in length, or
- 10 years if climate represented the range of variability of the 1900 – 2018 record.

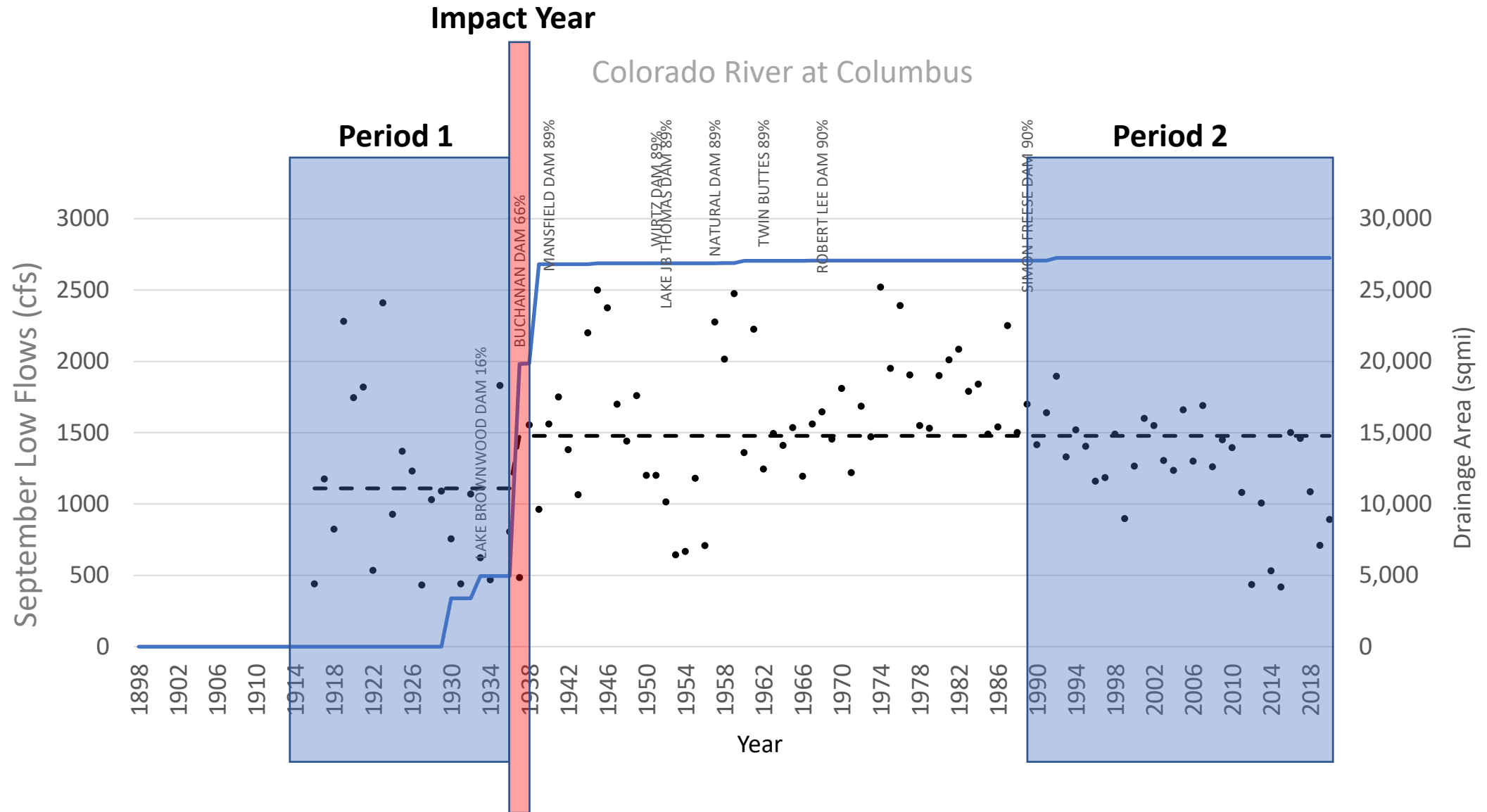
Period 1 or Pre-Altered Period

- Less than 20% area regulated by upstream reservoirs, or first 30 years

Period 2 or Post-Altered Period

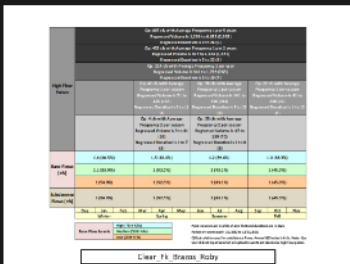
- Period after impact data, or last 30 years

Hydrology Based E-Flow Analysis



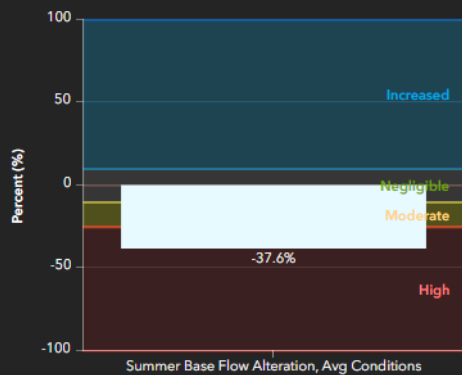
The Texas Environmental Flow Information Toolkit, Hydrology Dashboard

Target Flows

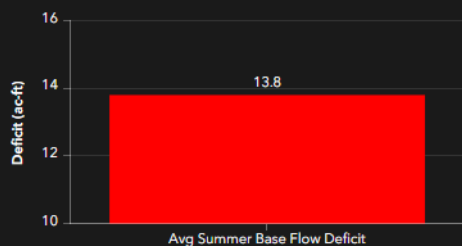


Clear Fk Brazos Rv nr Roby, TX

Hydrologic Alteration



Annual Streamflow Deficit (acre-ft)



Legend

Gage Discharge Locations

Degree of Alteration

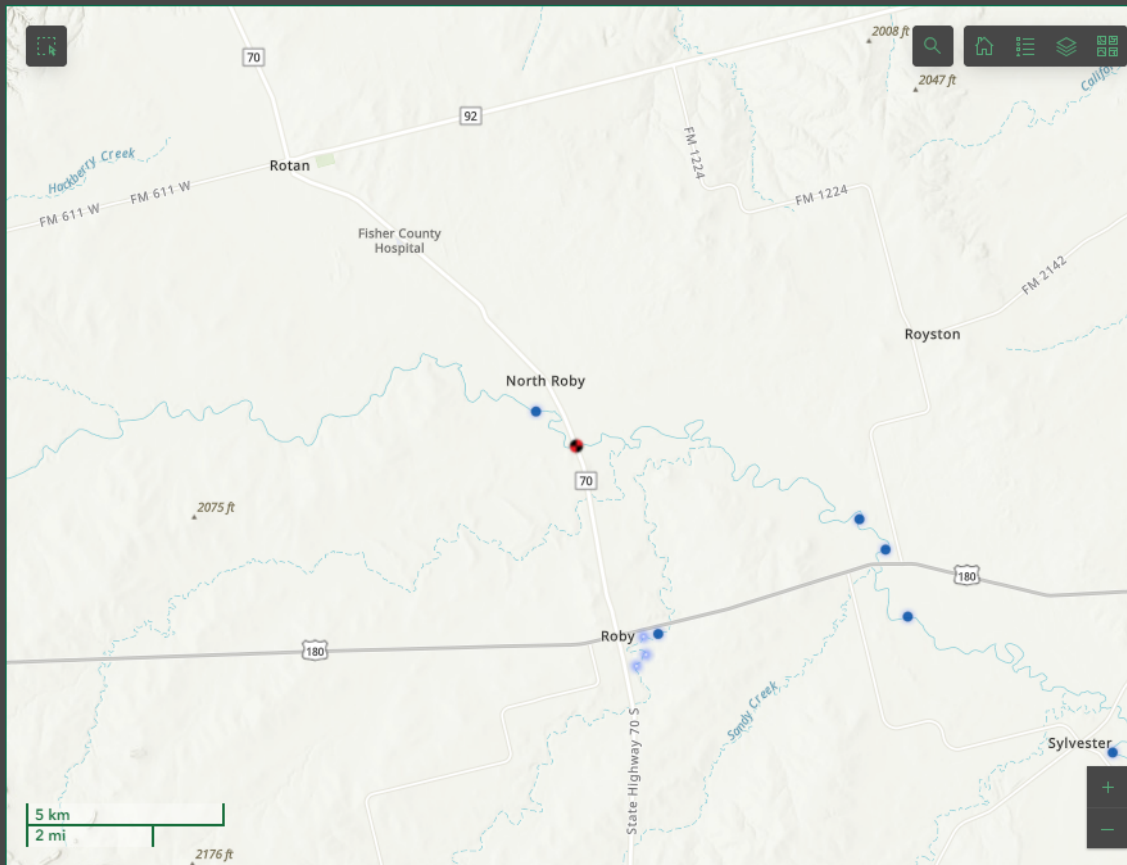
- Increased Attainment (Greater than 10%)
- Negligible Alteration (Greater than -10% to 10%)
- Moderate Alteration (Greater than -25% to -10%)
- High Alteration (Less than -25%)

Water Right Permit Locations

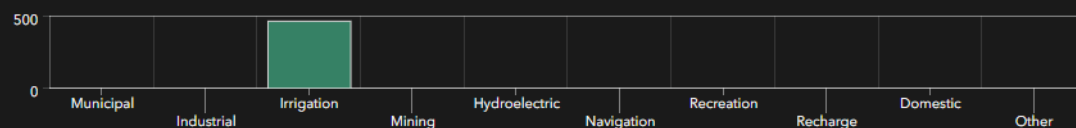
Amount Permitted (ac-ft)

- > 2,000,000 - 5,000,000
- > 1,000,000 - 2,000,000
- > 500,000 - 1,000,000

Select the icon to add layers to the map. Use the scrollbar on the right-hand side to see visible data layers.



Water Use by Type (ac-ft)



Water Use by Type

Annual Reported Use of Water Rights

Total Number of Water Rights

9

Total Amount Permitted (ac-ft)

470

Surface Water Right Permits

Water Right No. 4116

Use Type	Irrigation
Priority Date	12/30/1926
Total Permitted	2.0 ac-ft
Storage Amount	ac-ft
Maximum Use Reported	0.00 ac-ft
Average Use Reported	0.00 ac-ft

Water Right No. 4117

Use Type	Irrigation
Priority Date	12/30/1955
Total Permitted	1.0 ac-ft
Storage Amount	ac-ft
Maximum Use Reported	0.00 ac-ft
Average Use Reported	0.00 ac-ft

Water Right No. 4118

Use Type	Irrigation
Priority Date	12/30/1963
Total Permitted	8.0 ac-ft
Storage Amount	ac-ft
Maximum Use Reported	0.00 ac-ft
Average Use Reported	0.00 ac-ft

Water Right No. 4119

Use Type	Irrigation
Priority Date	12/30/1963
Total Permitted	5.0 ac-ft
Storage Amount	5.00 ac-ft
Maximum Use Reported	0.00 ac-ft
Average Use Reported	0.00 ac-ft

Water Right No. 4120

Use Type	Irrigation
----------	------------

Select and Review Water Rights



Marty.Kelly@tpwd.texas.gov

(512) 389 - 8214

The logo for Texas Parks & Wildlife is a green square with a white border. Inside the square, the words "TEXAS", "PARKS &", and "WILDLIFE" are written in white, bold, serif capital letters, separated by horizontal white lines. The logo is positioned on the right side of a blue gradient background that features a large, faint circular shape.

TEXAS

PARKS &

WILDLIFE