

Mapped, edited, and published by the Geological Survey
Control by USGS and NOS/NOAA
Topography by photogrammetric methods from aerial
photographs taken 1968. Field checked 1969
Selected hydrographic data compiled from US&GS chart 523 (1968)
This information is not intended for navigational purposes
Polyconic projection. 1927 North American datum
10,000-foot grid based on Texas coordinate system, south zone
1000-meter Universal Transverse Mercator grid ticks,
zone 14, shown in blue
Red tint indicates areas in which only landmark buildings are shown
Fine red dashed lines indicate selected fence lines
Water stages in this area vary with meteorological conditions
Approximate limits of occasional inundation shown by dashed blue lines
where mean high water is undetermined for lack of visual evidence
Dotted blue lines indicate the approximate limits of low water

Revisions shown in purple compiled from aerial photographs
taken 1975. This information not field checked
Purple tint indicates extension of urban areas

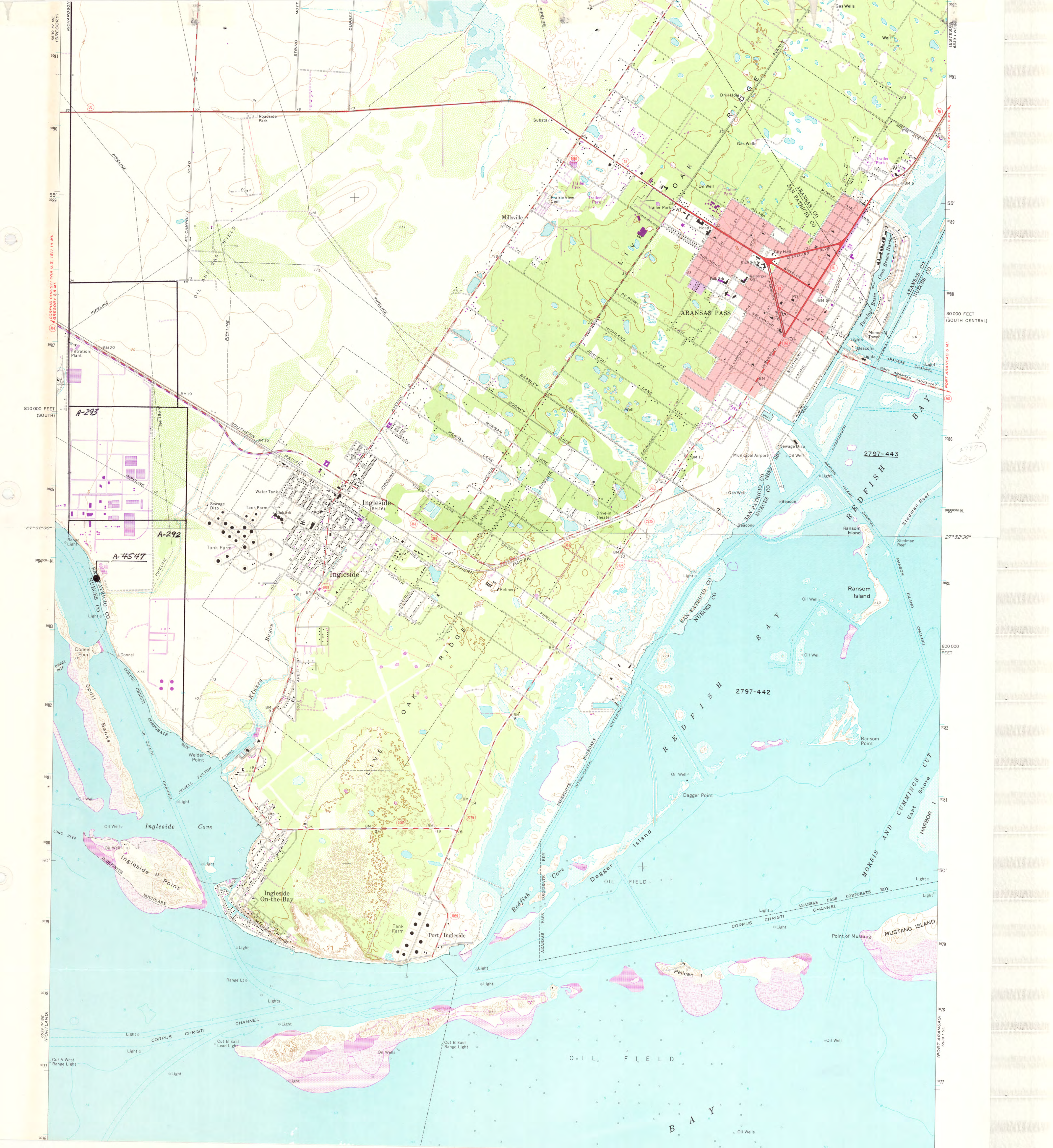
SCALE 1:24 000
CONTOUR INTERVAL 5 FEET
NATIONAL GEODETIC DATUM OF 1929
DEPTH CURVES AND SOUNDINGS IN FEET—DATUM IS MEAN LOW WATER
SHORELINE SHOWN REPRESENTS THE APPROXIMATE LINE OF MEAN HIGH WATER
THE MEAN RANGE OF TIDE IS NEGLECTIBLE



ROAD CLASSIFICATION
Primary highway, all weather, improved surface
Secondary highway, all weather, unimproved road, fair or dry hard surface
U.S. Route
Slate Route

A-4521/P-4235
SAN PATRICIO COUNTY
SAN ANTONIO-NUECES COASTAL BAY
GREGORY, TEX.
NE 1/4 CORPUS CHRISTI 15' QUADRANGLE
SANSAR2.5-W9715/7.5
1969
PHOTOREVISED 1975
AMS 8539 IV NE—SERIES W82

2797-434



6539 1/4 SEC (GREGORY)
6539 1/4 SEC (PORTLAND)
6539 1/4 SEC (PORT ARANSAS)

30 000 FEET (SOUTH CENTRAL)
810 000 FEET (SOUTH)
800 000 FEET
27° 52' 30"

A-293
A-292
A-4547

2797-443
2797-442

ARANSAS PASS

Ingleside

Ingleside

Ingleside On-the-Bay

OAK

REDFISH BAY

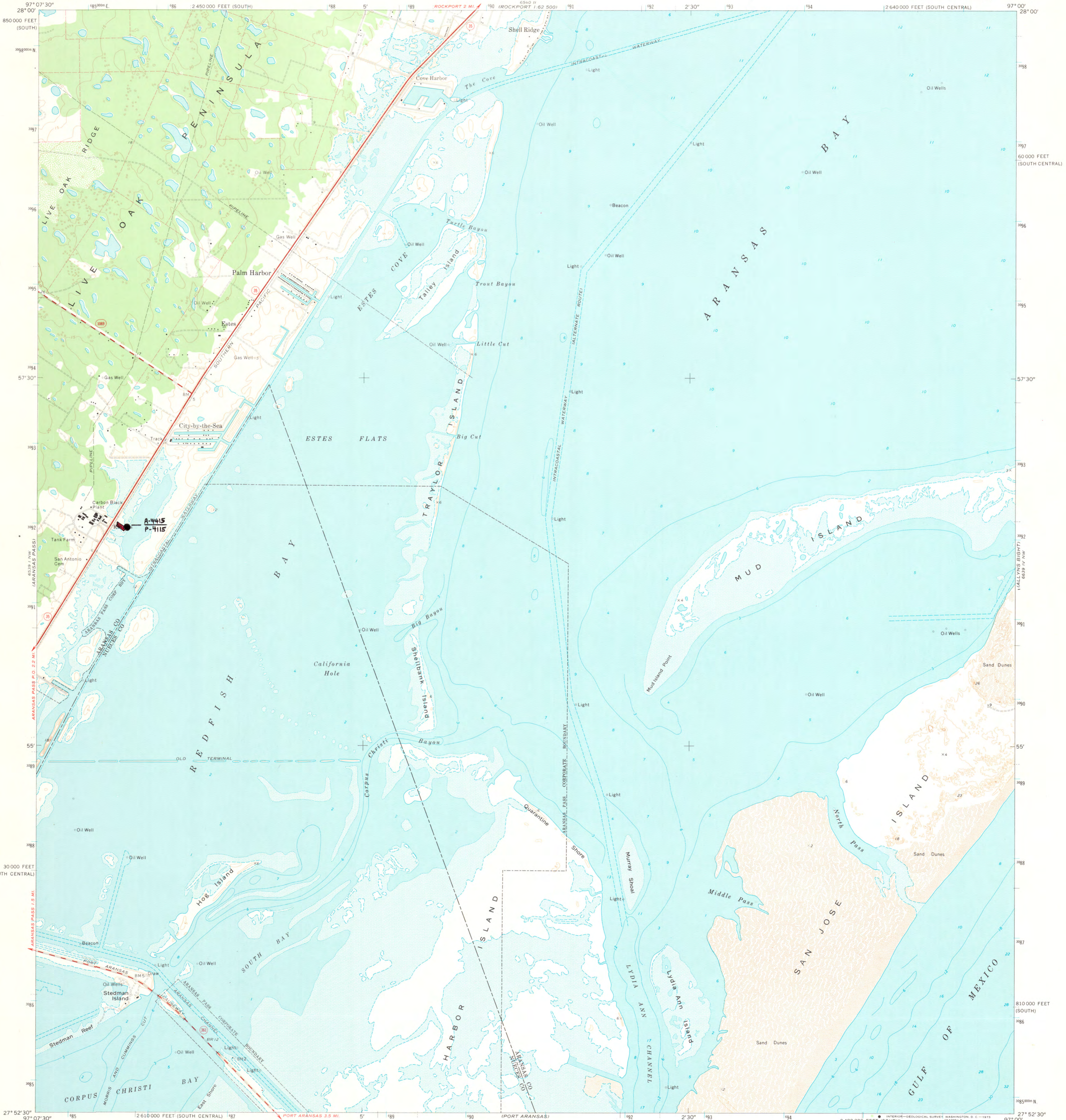
Ransom Island

MORRIS AND CUMMINGS CUT

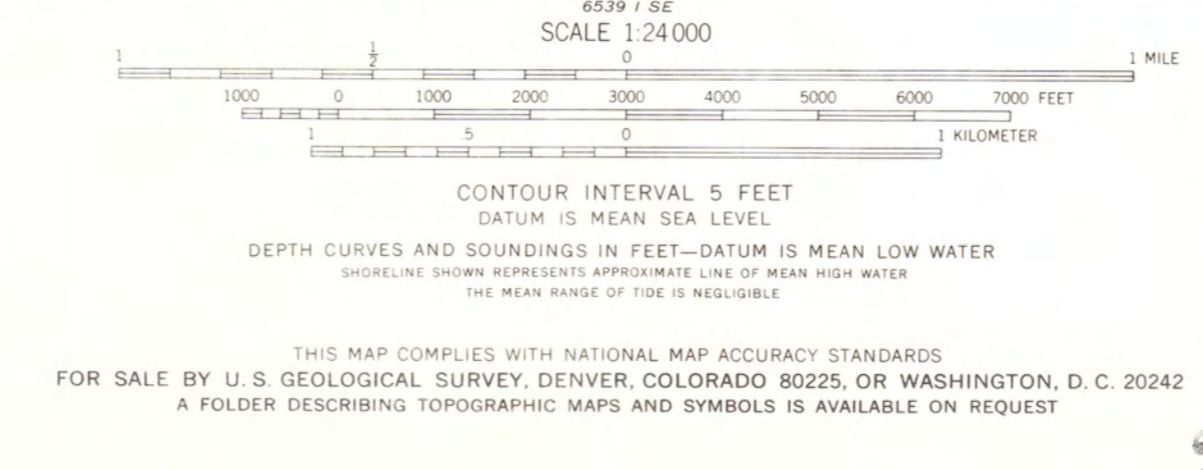
MUSTANG ISLAND

OIL FIELD

BAY



Mapped, edited, and published by the Geological Survey
Control by USGS and USC&GS
Planimetry by photogrammetric methods from aerial photographs taken 1969
Topography by planetable surveys 1971. Supersedes map dated 1954
Selected hydrographic data compiled from USC&GS Charts 523 (1970)
and 892 SC (1970). This information is not intended for navigational purposes
Polyconic projection. 1927 North American datum
10,000-foot grids based on Texas coordinate system, south central and south zones
1000-meter Universal Transverse Mercator grid ticks,
zone 14, shown in blue
Fine red dashed lines indicate selected fence lines
Water stages in this area vary with meteorological conditions
Approximate limits of occasional inundation shown by dashed blue
lines where mean high water is undetermined for lack of visual evidence
Dotted blue lines indicate the approximate limits of low water



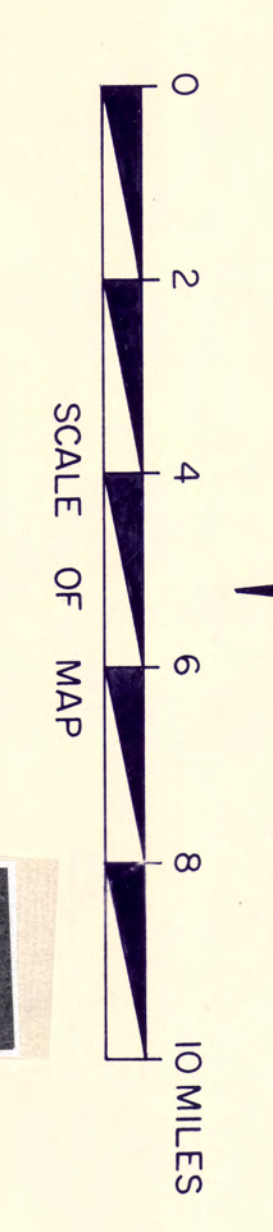
ROAD CLASSIFICATION

Primary highway, hard surface	Light-duty road, hard or improved surface
Secondary highway, hard surface	Unimproved road
Interstate Route	U. S. Route
	State Route

ESTES, TEX.
NE 1/4 ARANSAS PASS 15' QUADRANGLE
N2752.5-W9700/7.5
1971
AMS 6359 1 NE—SERIES V82

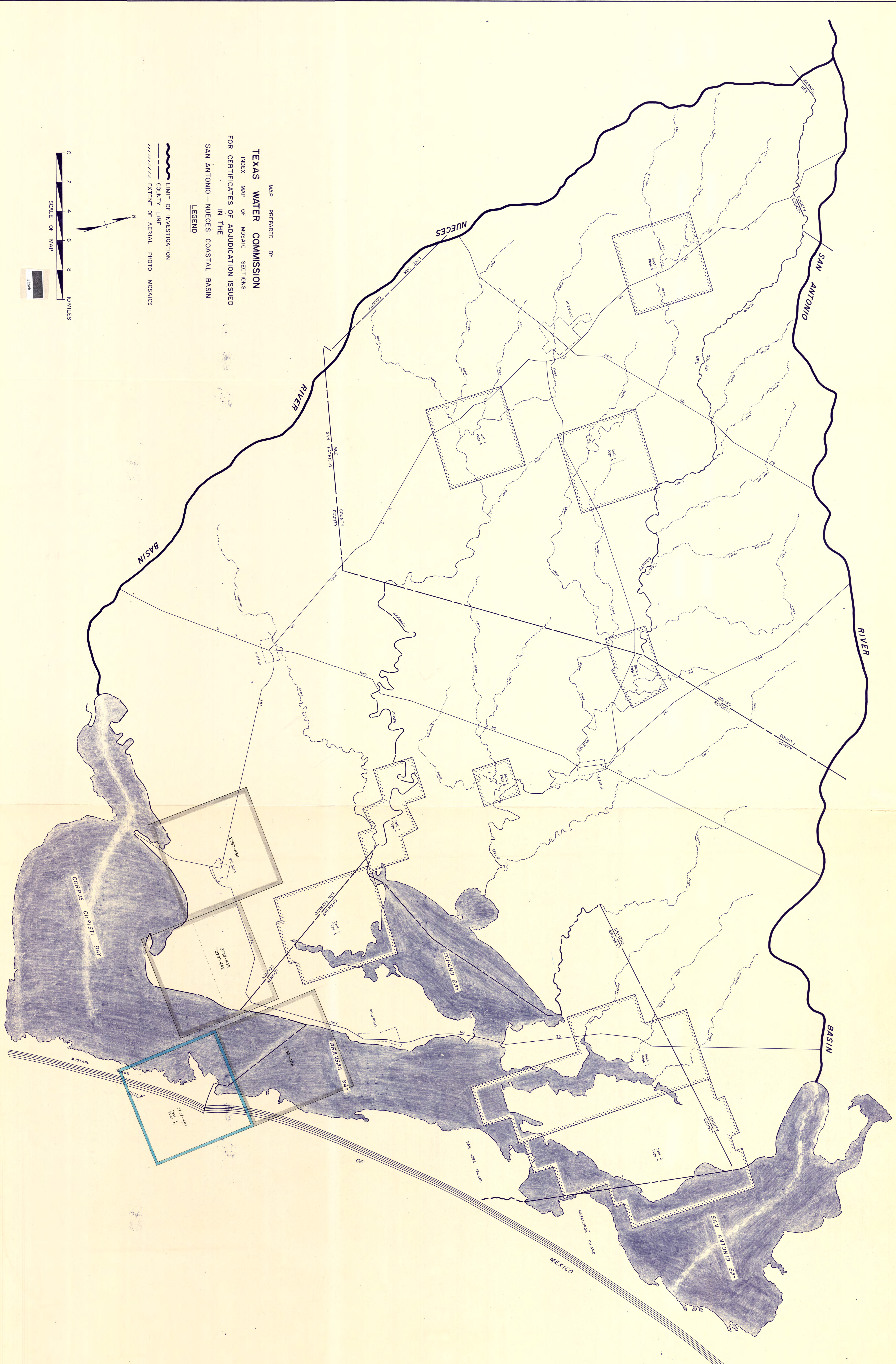
2797-444

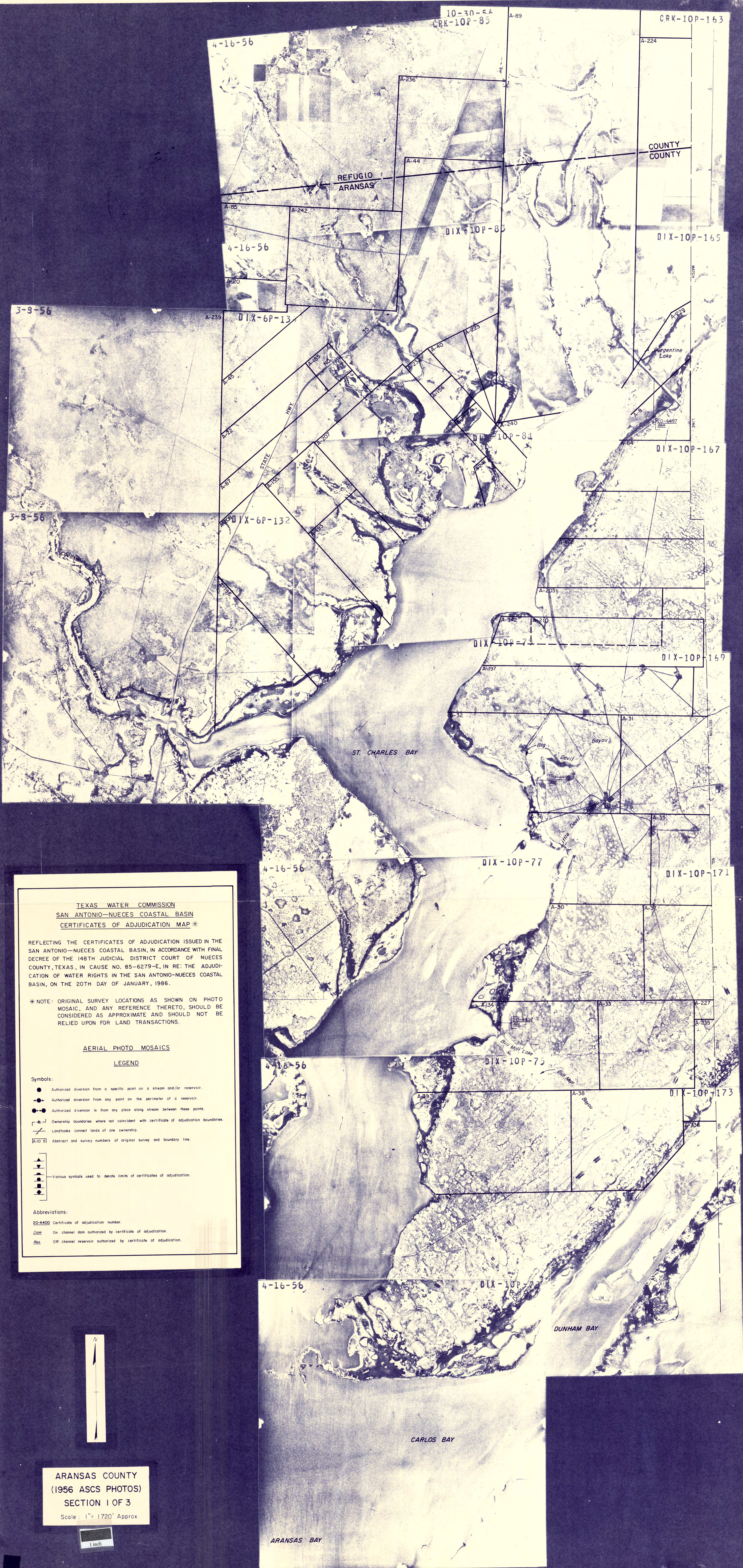
THIS MAP COMPLIES WITH NATIONAL MAP ACCURACY STANDARDS
FOR SALE BY U. S. GEOLOGICAL SURVEY, DENVER, COLORADO 80225, OR WASHINGTON, D. C. 20242
A FOLDER DESCRIBING TOPOGRAPHIC MAPS AND SYMBOLS IS AVAILABLE ON REQUEST



----- LIMIT OF INVESTIGATION
 - - - - - COUNTY LINE
 // // // // // EXTENT OF AERIAL PHOTO MOSAICS

MAP PREPARED BY
TEXAS WATER COMMISSION
 INDEX MAP OF MOSAIC SECTIONS
 FOR CERTIFICATES OF ADJUDICATION ISSUED
 IN THE
 SAN ANTONIO—NUECES COASTAL BASIN
LEGEND





TEXAS WATER COMMISSION
 SAN ANTONIO-NUECES COASTAL BASIN
 CERTIFICATES OF ADJUDICATION MAP *

REFLECTING THE CERTIFICATES OF ADJUDICATION ISSUED IN THE SAN ANTONIO-NUECES COASTAL BASIN, IN ACCORDANCE WITH FINAL DECREE OF THE 148TH JUDICIAL DISTRICT COURT OF NUECES COUNTY, TEXAS, IN CAUSE NO. 85-6279-E, IN RE: THE ADJUDICATION OF WATER RIGHTS IN THE SAN ANTONIO-NUECES COASTAL BASIN, ON THE 20TH DAY OF JANUARY, 1986.

* NOTE: ORIGINAL SURVEY LOCATIONS AS SHOWN ON PHOTO MOSAIC, AND ANY REFERENCE THERETO, SHOULD BE CONSIDERED AS APPROXIMATE AND SHOULD NOT BE RELIED UPON FOR LAND TRANSACTIONS.

AERIAL PHOTO MOSAICS
 LEGEND

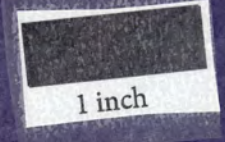
- Symbols:
- Authorized diversion from a specific point on a stream and/or reservoir.
 - Authorized diversion from any point on the perimeter of a reservoir.
 - Authorized diversion is from any place along stream between these points.
 - Ownership boundaries where not coincident with certificate of adjudication boundaries.
 - Landmarks connect lands of one ownership.
 - [A-44] Abstract and survey numbers of original survey and boundary line.

- Various symbols used to denote limits of certificates of adjudication.

- Abbreviations:
- 20-4460 Certificate of adjudication number.
 - dam On channel dam authorized by certificate of adjudication.
 - res On channel reservoir authorized by certificate of adjudication.



ARANSAS COUNTY
 (1956 ASCS PHOTOS)
 SECTION 1 OF 3
 Scale: 1" = 1720' Approx.





ARANSAS COUNTY
 (1956 ASCS PHOTOS)
 SECTION 2 OF 3
 Scale: 1" = 1690' Approx

TEXAS WATER COMMISSION
 SAN ANTONIO-NUECES COASTAL BASIN
 CERTIFICATES OF ADJUDICATION MAP

REFLECTING THE CERTIFICATES OF ADJUDICATION ISSUED IN THE SAN ANTONIO-NUECES COASTAL BASIN, IN ACCORDANCE WITH FINAL DECREE OF THE 148TH JUDICIAL DISTRICT COURT OF NUECES COUNTY, TEXAS, IN CAUSE NO. 85-6279-E, IN RE: THE ADJUDICATION OF WATER RIGHTS IN THE SAN ANTONIO-NUECES COASTAL BASIN, ON THE 20TH DAY OF JANUARY, 1966.

* NOTE: ORIGINAL SURVEY LOCATIONS AS SHOWN ON PHOTO MOSAIC, AND ANY REFERENCE THERE TO, SHOULD BE CONSIDERED AS APPROXIMATE AND SHOULD NOT BE RELIED UPON FOR LAND TRANSACTIONS.

AERIAL PHOTO MOSAICS
 LEGEND

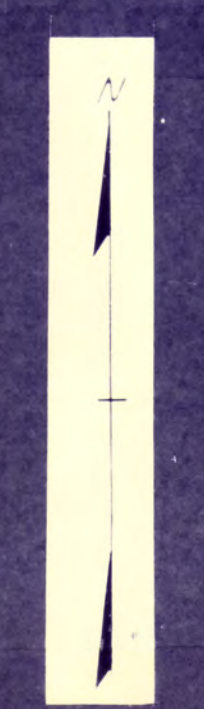
Symbols:

- Authorized diversion from a specific point on a stream and/or reservoir
- Authorized diversion from any point on the perimeter of a reservoir
- Authorized diversions in flow any place along stream between these points
- Ownership boundaries where not coincident with certificate of adjudication boundaries
- Landlocks connect lands of one owner
- Abstract and survey numbers of original survey and boundary line

▲ Various symbols used to denote limits of certificates of adjudication

Abbreviations:

- D-4400 Certificate of adjudication number
- Ch On channel bank authorized by certificate of adjudication
- Res Off channel reservoir authorized by certificate of adjudication



1 inch



ARANSAS COUNTY
(1956 ASCS PHOTOS)
SECTION 3 OF 3

Scale 1" = 1730' Approx
REVISED 26 APR 86

1 inch

TEXAS WATER COMMISSION
SAN ANTONIO-NUECES COASTAL BASIN
CERTIFICATES OF ADJUDICATION MAP *

REFLECTING THE CERTIFICATES OF ADJUDICATION ISSUED IN THE SAN ANTONIO-NUECES COASTAL BASIN, IN ACCORDANCE WITH FINAL DECREE OF THE 148TH JUDICIAL DISTRICT COURT OF NUECES COUNTY, TEXAS, IN CAUSE NO. 85-6279-E, IN RE: THE ADJUDICATION OF WATER RIGHTS IN THE SAN ANTONIO-NUECES COASTAL BASIN, ON THE 20TH DAY OF JANUARY, 1986.

* NOTE: ORIGINAL SURVEY LOCATIONS AS SHOWN ON PHOTO MOSAIC, AND ANY REFERENCE THERETO, SHOULD BE CONSIDERED AS APPROXIMATE AND SHOULD NOT BE RELIED UPON FOR LAND TRANSACTIONS.

AERIAL PHOTO MOSAICS

LEGEND

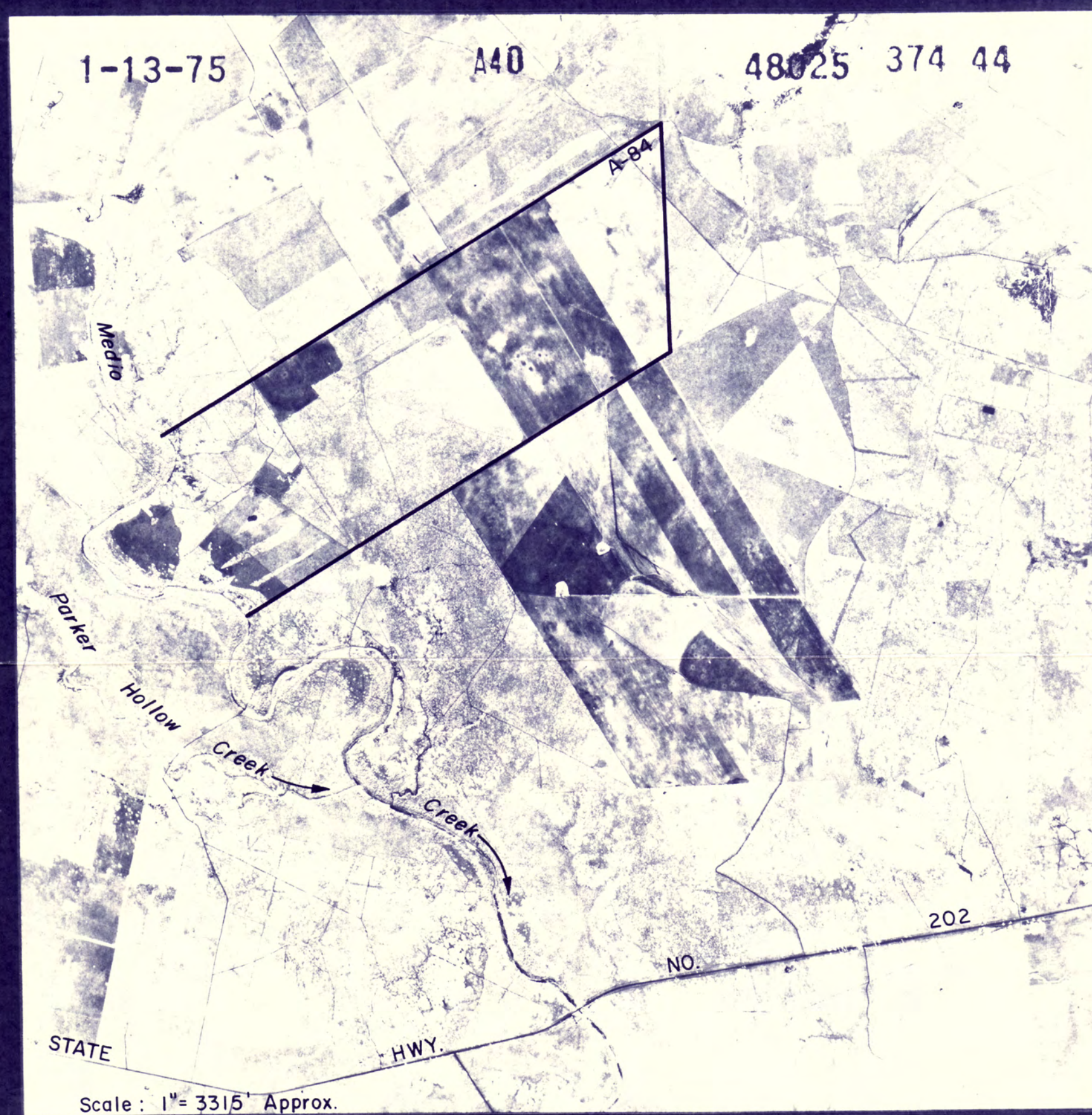
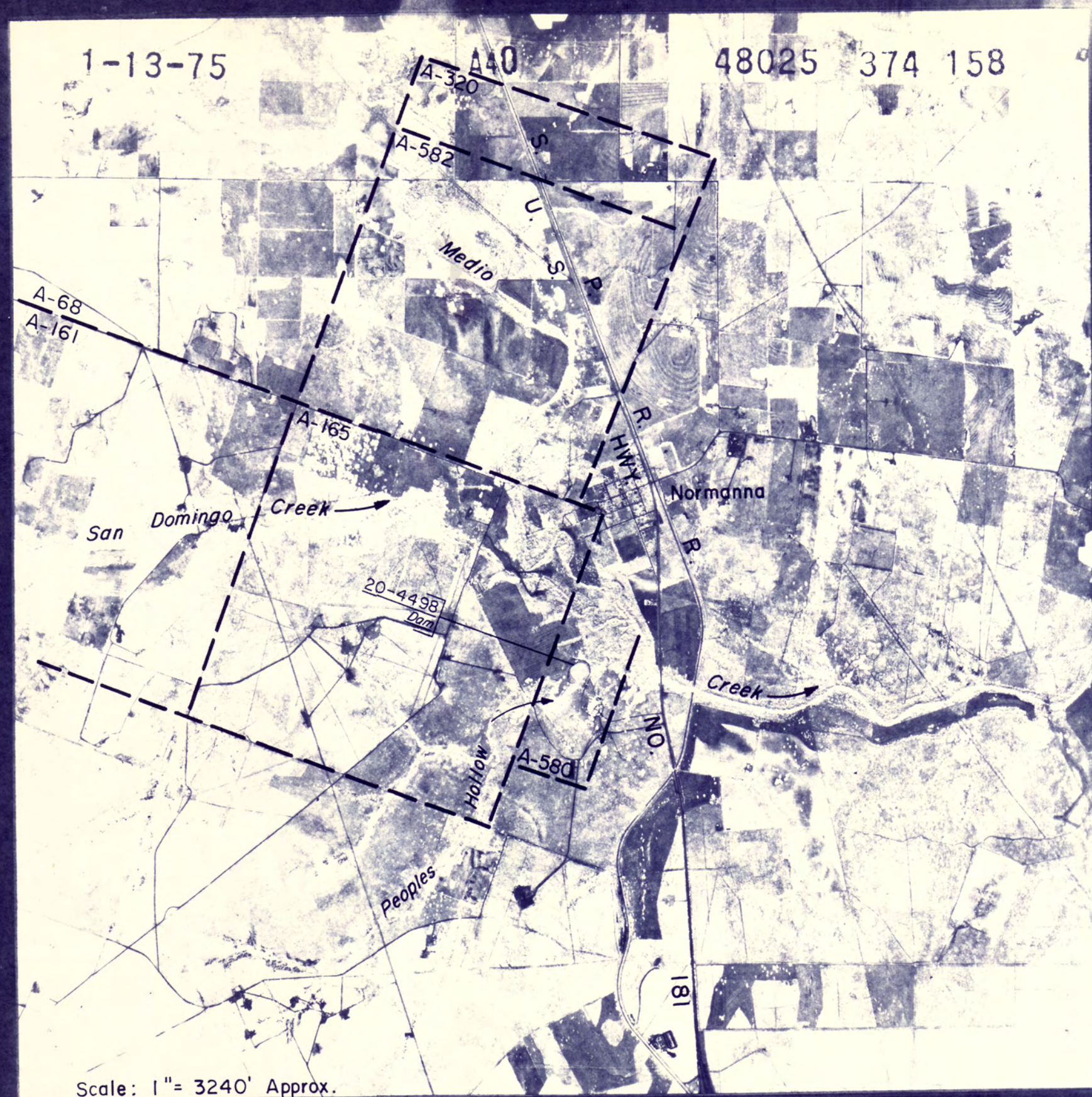
Symbols:

- Authorized diversion from a specific point on a stream and/or reservoir.
- Authorized diversion from any point on the perimeter of a reservoir.
- Authorized diversion is from any place along stream between these points.
- Ownership boundaries where not coincident with certificate of adjudication boundaries.
- Landlocks connect lands of one ownership.
- [A:10] Abstract and survey numbers of original survey and boundary line.

- ▲ Various symbols used to denote limits of certificates of adjudication.

Abbreviations:

- 20-4400 Certificate of adjudication number.
- Dam On channel dam authorized by certificate of adjudication.
- Res Off channel reservoir authorized by certificate of adjudication.



TEXAS WATER COMMISSION
SAN ANTONIO—NUECES COASTAL BASIN
CERTIFICATES OF ADJUDICATION MAP *

REFLECTING THE CERTIFICATES OF ADJUDICATION ISSUED IN THE SAN ANTONIO—NUECES COASTAL BASIN, IN ACCORDANCE WITH FINAL DECREE OF THE 148TH JUDICIAL DISTRICT COURT OF NUECES COUNTY, TEXAS, IN CAUSE NO. 85-6279-E, IN RE: THE ADJUDICATION OF WATER RIGHTS IN THE SAN ANTONIO—NUECES COASTAL BASIN, ON THE 20TH DAY OF JANUARY, 1986.

* NOTE: ORIGINAL SURVEY LOCATIONS AS SHOWN ON PHOTO MOSAIC, AND ANY REFERENCE THERETO, SHOULD BE CONSIDERED AS APPROXIMATE AND SHOULD NOT BE RELIED UPON FOR LAND TRANSACTIONS.

AERIAL PHOTO MOSAICS

LEGEND

Symbols:

- Authorized diversion from a specific point on a stream and/or reservoir.
- Authorized diversion from any point on the perimeter of a reservoir.
- Authorized diversion is from any place along stream between these points.
- Ownership boundaries where not coincident with certificate of adjudication boundaries.
- Landlocks connect lands of one ownership.
- [A10 5] Abstract and survey numbers of original survey and boundary line.

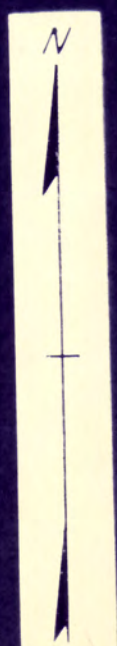
- ▲ Various symbols used to denote limits of certificates of adjudication.

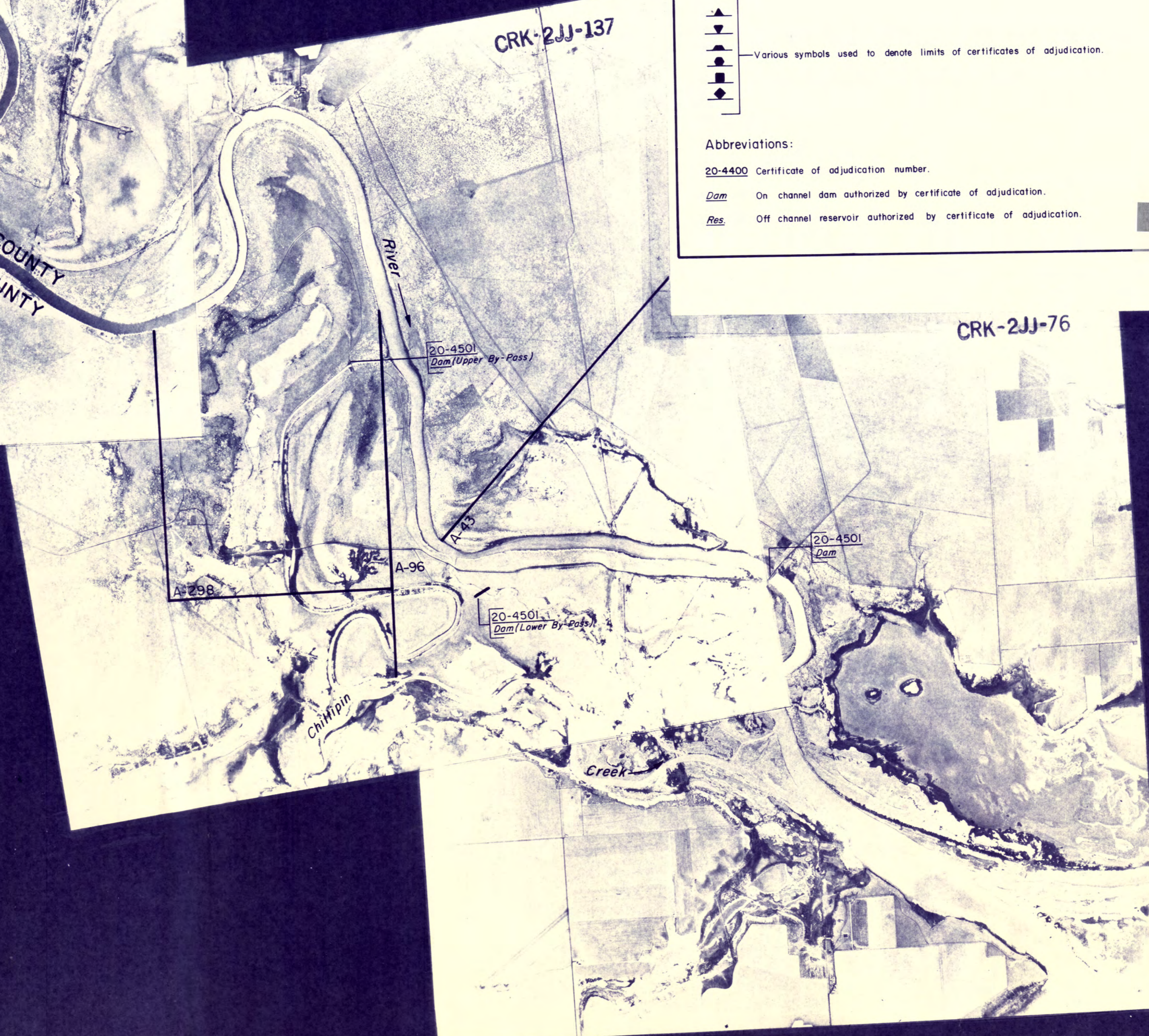
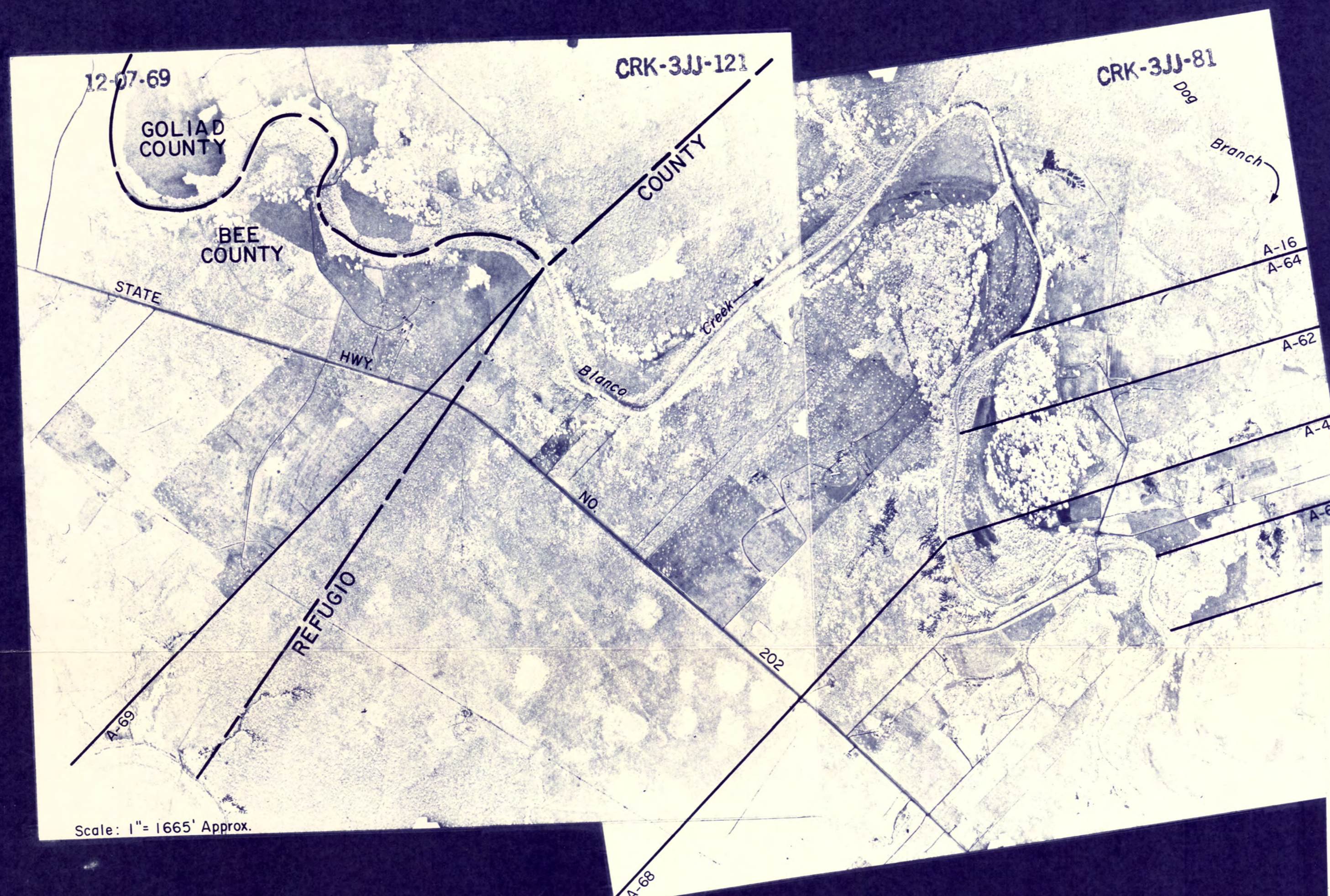
Abbreviations:

- 20-4400 Certificate of adjudication number.
- dam On channel dam authorized by certificate of adjudication.
- res Off channel reservoir authorized by certificate of adjudication.

BEE COUNTY
(1975 ASCS PHOTOS)
SECTION 1 OF 1
Scale: 1" = 3275' Approx.

1 inch





TEXAS WATER COMMISSION
SAN ANTONIO-NUECES COASTAL BASIN
CERTIFICATES OF ADJUDICATION MAP *

REFLECTING THE CERTIFICATES OF ADJUDICATION ISSUED IN THE SAN ANTONIO-NUECES COASTAL BASIN, IN ACCORDANCE WITH FINAL DECREE OF THE 148TH JUDICIAL DISTRICT COURT OF NUECES COUNTY, TEXAS, IN CAUSE NO. 85-6279-E, IN RE: THE ADJUDICATION OF WATER RIGHTS IN THE SAN ANTONIO-NUECES COASTAL BASIN, ON THE 20TH DAY OF JANUARY, 1986.

* NOTE: ORIGINAL SURVEY LOCATIONS AS SHOWN ON PHOTO MOSAIC, AND ANY REFERENCE THERETO, SHOULD BE CONSIDERED AS APPROXIMATE AND SHOULD NOT BE RELIED UPON FOR LAND TRANSACTIONS.

AERIAL PHOTO MOSAICS
LEGEND

Symbols:

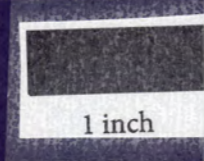
- Authorized diversion from a specific point on a stream and/or reservoir.
- Authorized diversion from any point on the perimeter of a reservoir.
- Authorized diversion is from any place along stream between these points.
- Ownership boundaries where not coincident with certificate of adjudication boundaries.
- Landmarks connect lands of one ownership.
- [A-10 5] Abstract and survey numbers of original survey and boundary line.

Various symbols used to denote limits of certificates of adjudication.

Abbreviations:

- 20-4400 Certificate of adjudication number
- dam On channel dam authorized by certificate of adjudication.
- off Off channel reservoir authorized by certificate of adjudication.

REFUGIO COUNTY
(1969 ASCS PHOTOS)
SECTION 1 OF 1
Scale: 1" = 1675' Approx.





Mapped, edited, and published by the Geological Survey
Control by USGS and NOS/NOAA.
Topography by photogrammetric methods from aerial photographs taken 1967. Field checked 1968
Supersedes map dated 1954
Selected hydrographic data compiled from USC&GS chart 523 (1969)
This information is not intended for navigational purposes
Polyconic projection. 1927 North American datum
10,000-foot grids based on Texas coordinate system, south and south central zones
1000-meter Universal Transverse Mercator grid ticks, zone 14, shown in blue
Water stages in this area vary with meteorological conditions
Approximate limits of occasional inundation shown by dashed blue lines where mean high water is undetermined for lack of visual evidence
Dotted blue lines indicate the approximate limits of low water

Revisions shown in purple compiled from aerial photographs taken 1975. This information not field checked

SCALE 1:24000
1 000 0 1000 2000 3000 4000 5000 6000 7000 FEET
1 KILOMETER
CONTOUR INTERVAL 5 FEET
NATIONAL GEODETIC VERTICAL DATUM OF 1929
DEPTH CURVES AND SOUNDINGS IN FEET—DATUM IS MEAN LOW WATER
SHORELINE SHOWN REPRESENTS APPROXIMATE LINE OF MEAN HIGH WATER
THE MEAN RANGE OF TIDE IS NEGLIGIBLE

ROAD CLASSIFICATION
Secondary highway, all weather, Light-duty road, all weather, improved surface
Unimproved road, fair or dry weather
State Route

PORT ARANSAS, TEX.
SE/4 ARANSAS PASS 15' QUADRANGLE
N2745—W9700/7.5
1968
PHOTOREVISED 1975
AMS 6539 1 SE—SERIES V882



2797-441