

From: [Jonathan Walling](#)
To: [REDACTED]
Cc: [OCE](#)
Subject: Enforcement Discretion Request LDAR Requirements Enterprise Products Operating LLC (CN603211277/RN102580834)
Date: Thursday, March 26, 2020 4:20:03 PM
Attachments: [Harris County 03-24-20-Stay-Home-Work-Safe-Order-by-the-County-Judge.pdf](#)
[Houston Ship Channel Marine Loading Facility Applicable LDAR rules.pdf](#)

Good afternoon, Mr. Fields :

Your request for enforcement discretion for Enterprise's Houston Ship Channel Marine Loading Facility, as presented, relating to LDAR monitoring by Method 21, as prescribed by Special Conditions of NSR Permit 97022 is approved. This enforcement discretion will be in effect until June 30, 2020. The required monitoring should be completed as soon as practicable, as conditions allow, before this date. Should an extension beyond this be needed, please re-submit your request.

Regulated entities must maintain records adequate to document activities related to the noncompliance under enforcement discretion, including details of the regulated entity's best efforts to comply.

Regards,

Jonathan Walling, Area Director
Coastal & East Texas Area
Texas Commission on Environmental Quality

From: Fields, Jon <[REDACTED]>
Sent: Thursday, March 26, 2020 1:31 PM
To: OCE <OCE@tceq.texas.gov>
Cc: Ramiro Garcia <ramiro.garcia@tceq.texas.gov>; Fields, Jon <[REDACTED]>
Subject: Enforcement Discretion Request LDAR Requirements Enterprise Products Operating LLC (CN603211277/RN102580834))

Mr. Garcia,

Enterprise Products Operating LLC, Enterprise Houston Ship Channel, L.P., and its affiliates (collectively, "Enterprise") are requesting enforcement discretion for skipped LDAR monitoring activities at our EPOLP Houston Ship Channel Marine Loading Facility, as follows:

- Actions for which enforcement discretion is requested: Enterprise will not be able to conduct the required LDAR monitoring by Method 21 on fugitive components throughout the facilities listed in the attached table. A preliminary list of regulatory citations for which enforcement discretion is requested is in the attached table; all citations relate to periodic Method 21 monitoring of fugitive components.

- Anticipated duration of need for enforcement discretion: Enterprise is requesting that enforcement discretion be exercised for missed Method 21 monitoring activities beginning upon TCEQ approval of this request and continuing through June 30, 2020.
- Basis for requesting enforcement discretion: Enterprise intends to prevent its LDAR contractors from coming on site for the time period subject to this request as part of our effort to assure continued reliable operation of our facilities during the COVID-19/Coronavirus pandemic.
 - Temporary exclusion of the approximately 3-4 LDAR contractor staff at issue is an essential component in assuring that Enterprise's mission-critical personnel are healthy and available in sufficient numbers to continue to operate the facilities. In addition to temporarily excluding LDAR contractors, Enterprise is also taking other measures such as excluding other contractors and visitors when possible, placing our employees on alternating shifts, directing some employees to work from home, prohibiting substantially all business travel for our employees, and enforcing mandatory 14-day quarantines when employees appear ill or return from travel.
 - Ensuring the health and availability of our mission-critical employees at these facilities, even at the cost of deferred LDAR monitoring tasks, is appropriate because the facilities are critical infrastructure in assuring the reliable delivery of energy and related products to the public.
 - Enterprise's efforts to limit personnel exposure are similar in spirit to the local jurisdiction's (Harris County) March 24, 2020 "Stay Home, Work Safe" executive order prohibiting most social gatherings and taking other exposure-limiting measures in light of the declared state of disaster in the jurisdiction (attached).
- Efforts to mitigate environmental impacts: We believe that missed monitoring for a short period of time will have little or no environmental impact. In the meantime, leaks will be monitored by plant operators conducting audio/visual/olfactory inspections when possible under limited staffing, and any leaks noted will be addressed in accordance with the applicable LDAR programs. When it appears safe to allow LDAR contractors and other visitors back on site, Enterprise will promptly resume regular method 21 monitoring.

If you have questions, please contact me at my contact address below. Enterprise is not stipulating that our planned conduct would violate the law, and we reserve our right to assert in the future that deferred LDAR monitoring is either legally compliant or excused or mitigated by an Act of God, necessity, or other defense or justification.

Thank you,

Jon E. Fields | Director, Field Environmental
Enterprise Products | 1100 Louisiana St., Houston, Tx 77002-5227
(713) 381- 6684 office | (832) 596-7176 cell | [REDACTED]

This message (including any attachments) is confidential and intended for a specific individual and purpose. If you are not the intended recipient, please notify the sender immediately and delete this message.



County Judge Lina Hidalgo
D I R E C T O R

ORDER OF COUNTY JUDGE LINA HIDALGO
Stay Home, Work Safe

Whereas, on March 11, 2020, Harris County Judge Lina Hidalgo issued a Declaration of Local Disaster for Public Health Emergency to allow Harris County to take measures to reduce the possibility of exposure to COVID-19 and promote the health and safety of Harris County residents in accordance with Section 418.108 of the Texas Government Code; and

Whereas, on March 13, 2020, a Declaration of State of Disaster was issued by Governor Abbott to take additional steps to prepare for, respond to, and mitigate the spread of COVID-19 to protect the health and welfare of Texans; and

Whereas, on March 16, 2020, President Trump acknowledged the gravity of the COVID-19 pandemic, releasing strict new guidelines to limit people's interactions, including that Americans should avoid groups of more than 10 people; and

Whereas, on March 17, 2020, the Harris County Commissioners Court issued an Order at a Special Meeting of Commissioners Court approving the extension to March 25, 2020, of the Declaration of Local Disaster for Public Health Emergency declared by County Judge Lina Hidalgo and signed on March 11, 2020; and

Whereas, on March 19, 2020, County Judge Lina Hidalgo issued an Order effective as of 8:00 a.m. on March 17, 2020, and continuing until 11:59 p.m. on March 31, 2020, requiring restaurants and bars to provide only carry-out, delivery or drive-thru services as allowed by law, and closing nightclubs, lounges and taverns, and restricting private clubs; and

Whereas, on March 19, 2020, Governor Abbott issued the first Public Health Disaster Declaration released in the State of Texas since 1901 and an Executive Order which, among other things, prohibits Texans from gathering in groups of more than 10 people; and

Whereas, on March 24, 2020, the Harris County Commissioners Court issued an Order approving the extension until April 29, 2020, of the Declaration of Local Disaster for Public Health Emergency declared by County Judge Lina Hidalgo and signed on March 11, 2020, and extended at a Special Meeting of Commissioners Court on March 17, 2020 to March 25, 2020; and

Whereas, the COVID-19 virus is contagious and spreads through person-to-person contact, especially in group settings; and

Whereas, the COVID-19 virus causes property loss or damage due to its ability to attach to surfaces for prolonged periods of time; and

Whereas, the Centers for Disease Control and Prevention ("CDC") recommends an "All of Community" approach focused on slowing the transmission of COVID-19 through social distancing to reduce illness and death, while minimizing social and economic impacts; and

Whereas, given the ongoing evaluation of circumstances related to the COVID-19 virus, the updated recommendations of the Centers for Disease Control and the Texas Department of State Health Services, and the substantial risks posed by the COVID-19 virus to Harris County residents and their property, the following extraordinary measures must be taken to protect the public's safety.

NOW THEREFORE, I, COUNTY JUDGE FOR HARRIS COUNTY, TEXAS, PURSUANT TO THE AUTHORITY VESTED BY TEXAS GOVERNMENT CODE CHAPTER 418, HEREBY FIND AND ORDER:

That the findings and recitations set out in the preamble to this ORDER are found to be true and correct and they are hereby adopted by the County Judge and made a part hereof for all purposes. This Order is in addition to any previous orders issued by the Harris County Judge and hereby incorporates all previous orders by reference, including the Order of March 19, 2020, pertaining to restaurants and bars.

Summary. The virus that causes 2019 Coronavirus Disease (COVID-19) is easily transmitted through person-to-person contact, especially in group settings, and it is essential that the spread of the virus be slowed to protect the ability of public and private healthcare providers to handle the influx of new patients and safeguard public health and safety. Because of the risk of the rapid spread of the virus and the need to protect the most vulnerable members of the community, this Order requires all individuals anywhere in Harris County, to stay at home – except for certain Essential Activities and work to provide Essential Business and Essential Government services or perform essential infrastructure construction, including housing. This Order takes effect at 11:59 p.m. on March 24, 2020 and will continue through 11:59 p.m. on April 3, 2020, subject to the limited exceptions and under the terms and conditions more particularly set forth below.

1. Effective as of 11:59 p.m. on March 24, 2020, and continuing until 11:59 p.m. on April 3, 2020:
 - a. All individuals currently living within Harris County are ordered to stay at their place of residence except for Essential Activities as defined in this order. All persons may leave their Residences only for Essential Activities, or to provide or perform Essential Governmental Functions, or to operate Essential Businesses, as defined in Section 2. For purposes of this Order,

Residence includes homes, hotels, motels, shared rentals, and similar facilities. To the extent individuals are using shared or outdoor spaces, they must at all times as reasonably as possible maintain social distancing of at least six feet from any other person when they are outside their residence.

- b. Individuals experiencing homelessness are exempt from this Order except that, to the extent individuals are using shared or outdoor spaces, they shall, to the greatest extent feasible, maintain social distancing of at least six feet from any other person. Individuals experiencing homelessness are strongly urged to obtain shelter. Governmental and other entities that can provide shelter to homeless individuals are strongly urged to make shelter available, as soon as possible and to the maximum extent practicable (and to utilize social distancing requirements in their operations).
- c. All businesses operating within Harris County, except Essential Businesses as defined below in Section 2, are required to cease all activities at facilities located within the County. For clarity, businesses may continue operations consisting exclusively of employees or contractors performing activities at their own residences (i.e., working from home). To the greatest extent possible, all Essential Businesses shall comply with the Social Distancing Guidelines attached, including maintaining six-foot social distancing for both employees and the general public.
- d. All public or private gatherings of any number of people occurring outside a single household or living unit are prohibited, except as otherwise provided herein. Nothing in this Order prohibits the gathering of members of a household or living unit. Nothing in this Order affects orders or agreements regarding child-related visitation or custody arrangements.
- e. Individuals may go to public parks and open outdoor recreation areas. However, public playgrounds may increase spread of COVID-19 and, therefore, shall be closed.
- f. Restaurants, bars, micro-breweries, micro-distilleries, wineries and other establishments that serve food, with or without drive-in or drive-through services, are prohibited from serving food for consumption on the premises and may only serve food and/or alcohol by take out, delivery, or drive-through services as allowed by law, and detailed in the Harris County Judge's Order of March 19, 2020, pertaining to restaurants and bars.
- g. Gyms, fitness centers, swimming pools and other facilities that are used or intended to be used for any type of training, martial arts, sport or recreation shall close.
- h. Hair and nail salons, spas, licensed massage businesses and tattoo parlors, concert halls, live performance theaters, arenas, stadiums, movie theaters,

game rooms, bowling alleys, arcades, indoor and outdoor flea markets and swap meets, indoor malls, indoor shopping centers, and bingo halls shall close.

- i. Faith leaders may minister and counsel in individual settings, so long as social distance protocols are followed. Religious and worship services may only be provided by video and teleconference. Religious institutions must limit in-person staff to those necessary for preparing for or conducting video or teleconference services, and all individuals must follow the Social Distancing Guidelines, including the six-foot social distancing.

2. **Definitions:**

- a. For purposes of this Order, individuals may leave their residence only to perform any of the following **“Essential Activities”**:
 - i. To engage in activities or perform tasks essential to their health and safety, or to the health and safety of their family or household members (for example, obtaining medical supplies or medication, visiting a healthcare professional, or obtaining supplies needed to work from home).
 - ii. To obtain necessary services or supplies for themselves and their family or household members, or to deliver those services or supplies to others (for example, food, pet supplies, and any other household consumer products, supplies needed to work from home, and products necessary to maintain the safety, sanitation, and essential operation of residences).
 - iii. To engage in outdoor activity, provided the individuals comply with social distancing requirements of six feet (for example, walking, biking, hiking, running, or fishing).
 - iv. To perform work providing essential products and services at an Essential Business or to otherwise carry out activities specifically permitted in this Order.
 - v. To care for a family member or pet in another household.
- b. For purposes of this Order, **“Essential Businesses”** include:
 - i. **Essential Critical Infrastructure.** Work necessary to the operations and maintenance of the 16 critical infrastructure sectors identified by the U.S. Department of Homeland Security National Cybersecurity and Infrastructure Security Agency (CISA), provided that they carry out those services or that work in compliance with social distancing requirements of six feet to the extent possible. *See*

Attachment (CISA's Guidance on Essential Critical Infrastructure Workforce). Essential Businesses providing essential infrastructure should implement screening precautions to protect employees and all activities shall be performed in compliance with social distancing guidelines.

- ii. **Essential Government Functions.** All services provided by local governments and municipalities located in Harris County needed to ensure their continuing operation to provide for the health, safety and welfare of the public, including law enforcement, jail operations and other services. Further, nothing in this Order shall prohibit any individual from performing "Essential Government Functions". All Essential Government Functions shall be performed in compliance with social distancing requirements of six feet to the extent possible.
- iii. **Essential City of Houston Government Functions.** All services provided by the City of Houston that the Mayor of the City of Houston determines to be essential Government Functions. Further, nothing in this Order shall prohibit any individual from performing "Essential Government Functions". All Essential Government Functions shall be performed in compliance with social distancing requirements of six feet to the extent possible.
- iv. **Essential Healthcare Operations.** Healthcare operations, including hospitals, clinics, dentists, pharmacies, pharmaceutical and biotechnology companies, other healthcare facilities, healthcare suppliers, mental health providers, substance abuse service providers, blood banks, medical research, laboratory services, or any related and/or ancillary healthcare services. Home-based and residential-based care for seniors, adults, or children are also considered healthcare operations. Healthcare operations also include veterinary care and all health and welfare services provided to animals. This exemption shall be viewed broadly to avoid any impacts to the delivery of healthcare.
- v. **Essential Retail.** Food producers and service providers, including grocery stores, warehouse stores, furniture suppliers, big box stores, bodegas, liquor stores, gas stations and convenience stores, farmers' markets that sell food products and household staples. Food cultivation, including farming, ranching, fishing, and livestock. Food production, including the production of canned goods, bottled beverages and other grocery items. Businesses that ship or deliver groceries, food, goods or services directly to residences. Restaurants and other facilities that prepare and serve food, but only for delivery, drive-thru or carry-out. Schools and other entities that typically provide free services to students or members of the public

on a pick-up and take-away basis only. The restriction of delivery or carry-out does not apply to cafes and restaurants located within hospital and medical facilities. Laundromats, dry cleaners, and laundry service providers. Gas stations, auto supply, auto and bicycle repair, hardware stores, and related facilities. Businesses that supply products needed for people to work from home.

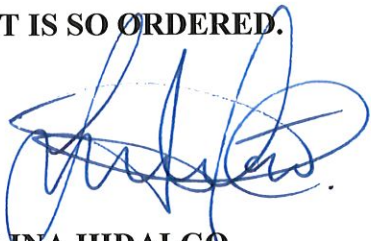
- vi. **Providers of Basic Necessities to Economically Disadvantaged Populations.** Businesses that provide food, shelter, and social services, and other necessities of life for economically disadvantaged or otherwise needy individuals.
- vii. **Essential Services Necessary to Maintain Essential Operations of Residences or Other Essential Businesses.** Trash and recycling collection, processing and disposal, mail and shipping services, building cleaning, maintenance and security, warehouse/distribution and fulfillment, storage for essential businesses, funeral homes, crematoriums and cemeteries. Plumbers, electricians, exterminators, yard and maintenance crews, housekeepers, janitorial staff, pool cleaners and other service providers who provide services that are necessary to maintaining the safety, sanitation, and essential operations of residences and Essential Businesses. Professional services, such as legal or accounting services, when necessary to assist in compliance with legally mandated activities. Businesses that supply other Essential Businesses with support or utilities needed to operate. Caregivers and helpers who provide services to seniors and disabled individuals.
- xiii. **News Media.** Newspapers, television, radio, and other media services.
- ix. **Childcare and Adult Care Services.** Childcare and adult care facilities providing services that enable employees exempted in this Order to work as permitted.
- xi. **Infrastructure, Development, Operation and Construction.** For example, public works construction, construction of housing or other types of construction including commercial, manufacturing, airport operations and aircraft manufacturing, maintenance or repair, water, sewer, gas, electrical, oil refining, roads and highways, public transportation, solid waste collection and removal, internet, and telecommunications systems (including the provision of essential global, national, and local infrastructure for computing services, business infrastructure, communications, and web-based services).

- xii. **Transportation.** Businesses related to the operation, maintenance, construction, and manufacture of transportation services. For example, (a) vehicle manufacturers, automotive suppliers and parts departments, car dealerships, parts distributors, maintenance and repair facilities; (b) public transportation; (c) businesses supporting airport operations; (d) street and highway maintenance and construction; (e) gas stations and other fuel distribution businesses; (f) vehicles for hire, including public transportation services, Uber, Lyft, and taxicabs, that enable persons to travel to or from employers, service providers, or businesses exempted in this Order. People riding on public transit must comply with the six-foot social distancing requirements to the greatest extent feasible.
 - xiii. **Labor union functions.** Critical labor union functions, including the maintenance of health and welfare funds and checking on the well-being and safety of members.
 - xiv. **NASA and Port of Houston.** Activities of the National Aeronautics and Space Administration and the Port of Houston.
 - xv. **Airports and related operations.** Airport and airline activities, operations, maintenance and repairs, and the hotels that serve these Essential Businesses.
 - xvi. **Professional services.** Professional services, such as legal or accounting services, insurances services, and “real estate services” when necessary to assist in compliance with legally mandated activities or to further Essential Businesses, Essential Government functions, or Critical Infrastructure.
3. These infection control precautions apply to all Essential Businesses: (1) practice social distancing by requiring patrons, visitors, and employees to be separated by six (6) feet, to the extent feasible; (2) provide access to hand washing facilities with soap and water or hand sanitizer that contains at least 60 percent alcohol; (3) post a sign in a conspicuous place at the public entrance to the venue instructing members of the public not to enter if they are experiencing symptoms of respiratory illness, including fever or cough; and (4) adhere to other general communicable disease control recommendations by public health authorities.
 4. Any manufacturer who retools so that a substantial part of their business is for the purpose of manufacturing and producing ventilators, personal protective equipment, or other medical supplies and equipment necessary for the COVID-19 response may apply for an “Essential Business” exemption under this Order. Any industry or business that is not an Essential Business may apply for an exemption from the requirements imposed by this Order. To be eligible for an exemption, the

industry or business must complete and submit an application form, which will be made available to the public at www.ReadyHarris.org, along with evidence that the continuing operations of the business or industry are essential to promoting the general welfare of the residents of Harris County and the State of Texas during the COVID-19 response. Businesses or industries that retool or amend their operations to provide or support Essential Services during the COVID-19 response may also submit an application for exemption.

5. Grocery stores, supermarkets, warehouse stores, hospitals, and medical facilities are experiencing high levels of demand for a large number of products, requiring more deliveries from manufacturers and distribution centers to serve their customers. A number of Texas cities and local associations have implemented restrictions on delivery hours to stores to mitigate truck noise and traffic. Due to the need to deliver products as quickly and efficiently as possible during this critical timeframe, this Order hereby suspends all delivery hour restrictions for transport to or from any entity involved in the selling or distribution of food products, medicine, or medical supplies or equipment in Harris County for the next sixty (60) days.
6. If someone in a household has tested positive for COVID-19, all residents of the household are ordered to isolate at home until cleared by a public health authority or medical provider.
7. Nursing homes, retirement, and long-term care facilities are instructed by this Order to prohibit nonessential visitors from accessing their facilities unless to provide critical assistance or for end-of-life visitation.
8. This Order shall be effective until 11:59 p.m. on April 3, 2020 or until it is either rescinded, superseded, or amended pursuant to applicable law.
9. Pursuant to Appendix 9 to and Section V(A)(5)(a) Annex U of the Harris County Basic Plan adopted by Harris County Commissioners Court on October 29, 2019, and in accordance with Tex. Gov't Code § 418.173, any law enforcement agency based in Harris County is hereby authorized to enforce this order and the failure to comply with this Order is an offense under this Order and is punishable by a fine that does not exceed \$1,000.00 or confinement in jail for a term that does not exceed 180 days.
10. Harris County will post this Order on the Internet. In addition, the owner, manager, or operator of any facility that is likely to be impacted by this Order is strongly encouraged to post a copy of this Order onsite and to provide a copy to any member of the public asking for a copy. If any subsection, sentence, clause, phrase, or word of this Order or any application of it to any person, structure, gathering, or circumstance is held to be invalid or unconstitutional by a decision of a court of competent jurisdiction, then such decision will not affect the validity of the remaining portions or applications of this Order.

IT IS SO ORDERED.



LINA HIDALGO
HARRIS COUNTY JUDGE

3/24/2020



March 19, 2020

**MEMORANDUM ON IDENTIFICATION OF ESSENTIAL CRITICAL
INFRASTRUCTURE WORKERS DURING COVID-19 RESPONSE**

FROM: Christopher C. Krebs
Director
Cybersecurity and Infrastructure Security Agency (CISA)

As the Nation comes together to slow the spread of COVID-19, on March 16th, the President issued updated Coronavirus Guidance for America. This guidance states that:

"If you work in a critical infrastructure industry, as defined by the Department of Homeland Security, such as healthcare services and pharmaceutical and food supply, you have a special responsibility to maintain your normal work schedule."

The Cybersecurity and Infrastructure Security Agency (CISA) executes the Secretary of Homeland Security's responsibilities as assigned under the Homeland Security Act of 2002 to provide strategic guidance, promote a national unity of effort, and coordinate the overall federal effort to ensure the security and resilience of the Nation's critical infrastructure. CISA uses trusted partnerships with both the public and private sectors to deliver infrastructure resilience assistance and guidance to a broad range of partners.

In accordance with this mandate, and in collaboration with other federal agencies and the private sector, CISA developed an initial list of "Essential Critical Infrastructure Workers" to help State and local officials as they work to protect their communities, while ensuring continuity of functions critical to public health and safety, as well as economic and national security. The list can also inform critical infrastructure community decision-making to determine the sectors, sub-sectors, segments, or critical functions that should continue normal operations, appropriately modified to account for Centers for Disease Control (CDC) workforce and customer protection guidance.

The attached list identifies workers who conduct a range of operations and services that are essential to continued critical infrastructure viability, including staffing operations centers, maintaining and repairing critical infrastructure, operating call centers, working construction, and performing management functions, among others. The industries they support represent, but are not necessarily limited to, medical and healthcare, telecommunications, information technology systems, defense, food and agriculture, transportation and logistics, energy, water and wastewater, law enforcement, and public works.

We recognize that State, local, tribal, and territorial governments are ultimately in charge of implementing and executing response activities in communities under their jurisdiction, while the Federal Government is in a supporting role. As State and local communities consider COVID-19-related restrictions, CISA is offering this list to assist prioritizing activities related to continuity of operations and incident response, including the appropriate movement of critical infrastructure workers within and between jurisdictions.

Accordingly, this list is advisory in nature. It is not, nor should it be considered to be, a federal directive or standard in and of itself.

In addition, these identified sectors and workers are not intended to be the authoritative or exhaustive list of critical infrastructure sectors and functions that should continue during the COVID-19 response. Instead, State and local officials should use their own judgment in using their authorities and issuing implementation directives and guidance. Similarly, critical infrastructure industry partners will use their own judgment, informed by this list, to ensure continued operations of critical infrastructure services and functions. All decisions should appropriately balance public safety while ensuring the continued delivery of critical infrastructure services and functions.

CISA will continue to work with you and our partners in the critical infrastructure community to update this list as the Nation's response to COVID-19 evolves. We also encourage you to submit how you might use this list so that we can develop a repository of use cases for broad sharing across the country.

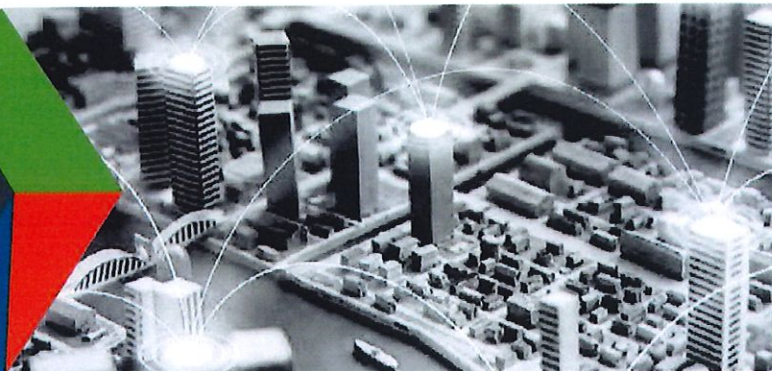
Should you have questions about this list, please contact CISA at CISA.CAT@cisa.dhs.gov.

Attachment: "Guidance on the Essential Critical Infrastructure Workforce: Ensuring Community and National Resilience in COVID-19 Response"



CISA
CYBER+INFRASTRUCTURE

DEFEND TODAY, SECURE TOMORROW



Guidance on the Essential Critical Infrastructure Workforce: Ensuring Community and National Resilience in COVID-19 Response

Version 1.0 (March 19, 2020)

THE IMPORTANCE OF ESSENTIAL CRITICAL INFRASTRUCTURE WORKERS

Functioning critical infrastructure is imperative during the response to the COVID-19 emergency for both public health and safety as well as community well-being. Certain critical infrastructure industries have a special responsibility in these times to continue operations.

This guidance and accompanying list are intended to support State, Local, and industry partners in identifying the critical infrastructure sectors and the essential workers needed to maintain the services and functions Americans depend on daily and that need to be able to operate resiliently during the COVID-19 pandemic response.

This document gives guidance to State, local, tribal, and territorial jurisdictions and the private sector on defining essential critical infrastructure workers. Promoting the ability of such workers to continue to work during periods of community restriction, access management, social distancing, or closure orders/directives is crucial to community resilience and continuity of essential functions.

CONSIDERATIONS FOR GOVERNMENT AND BUSINESS

This list was developed in consultation with federal agency partners, industry experts, and State and local officials, and is based on several key principles:

1. Response efforts to the COVID-19 pandemic are locally executed, State managed, and federally supported
2. Everyone should follow guidance from the CDC, as well as State and local government officials, regarding strategies to limit disease spread.
3. Workers should be encouraged to work remotely when possible and focus on core business activities. In-person, non-mandatory activities should be delayed until the resumption of normal operations.
4. When continuous remote work is not possible, businesses should enlist strategies to reduce the likelihood of spreading the disease. This includes, but is not necessarily limited to, separating staff by off-setting shift hours or days and/or social distancing. These steps can preserve the workforce and allow operations to continue.

CONNECT WITH US
www.cisa.gov

For more information,
email CISA.CAT@cisa.dhs.gov



[Linkedin.com/company/cybersecurity-and-infrastructure-security-agency](https://www.linkedin.com/company/cybersecurity-and-infrastructure-security-agency)



@CISAgov | @cyber | @uscert_gov



[Facebook.com/CISA](https://www.facebook.com/CISA)

Essential Critical Infrastructure Workforce

5. All organizations should implement their business continuity and pandemic plans, or put plans in place if they do not exist. Delaying implementation is not advised and puts at risk the viability of the business and the health and safety of the employees.
6. In the modern economy, reliance on technology and just-in-time supply chains means that certain workers must be able to access certain sites, facilities, and assets to ensure continuity of functions.
7. Government employees, such as emergency managers, and the business community need to establish and maintain lines of communication.
8. When government and businesses engage in discussions about critical infrastructure workers, they need to consider the implications of business operations beyond the jurisdiction where the asset or facility is located. Businesses can have sizeable economic and societal impacts as well as supply chain dependencies that are geographically distributed.
9. Whenever possible, jurisdictions should align access and movement control policies related to critical infrastructure workers to lower the burden of workers crossing jurisdictional boundaries.

IDENTIFYING ESSENTIAL CRITICAL INFRASTRUCTURE WORKERS

The following list of sectors and identified essential critical infrastructure workers are an initial recommended set and are intended to be overly inclusive reflecting the diversity of industries across the United States. CISA will continually solicit and accept feedback on the list (both sectors/sub sectors and identified essential workers) and will evolve the list in response to stakeholder feedback. We will also use our various stakeholder engagement mechanisms to work with partners on how they are using this list and share those lessons learned and best practices broadly. We ask that you share your feedback, both positive and negative on this list so we can provide the most useful guidance to our critical infrastructure partners. Feedback can be sent to CISA.CAT@CISA.DHS.GOV.



CONNECT WITH US
www.cisa.gov

For more information,
email CISA.CAT@cisa.dhs.gov



[Linkedin.com/company/cybersecurity-and-infrastructure-security-agency](https://www.linkedin.com/company/cybersecurity-and-infrastructure-security-agency)



[@CISAgov](https://twitter.com/CISAgov) | [@cyber](https://twitter.com/cyber) | [@uscert_gov](https://twitter.com/uscert_gov)



[Facebook.com/CISA](https://www.facebook.com/CISA)

HEALTHCARE / PUBLIC HEALTH

- Workers providing COVID-19 testing; Workers that perform critical clinical research needed for COVID-19 response
- Caregivers (e.g., physicians, dentists, psychologists, mid-level practitioners, nurses and assistants, infection control and quality assurance personnel, pharmacists, physical and occupational therapists and assistants, social workers, speech pathologists and diagnostic and therapeutic technicians and technologists)
- Hospital and laboratory personnel (including accounting, administrative, admitting and discharge, engineering, epidemiological, source plasma and blood donation, food service, housekeeping, medical records, information technology and operational technology, nutritionists, sanitarians, respiratory therapists, etc.)
- Workers in other medical facilities (including Ambulatory Health and Surgical, Blood Banks, Clinics, Community Mental Health, Comprehensive Outpatient rehabilitation, End Stage Renal Disease, Health Departments, Home Health care, Hospices, Hospitals, Long Term Care, Organ Pharmacies, Procurement Organizations, Psychiatric Residential, Rural Health Clinics and Federally Qualified Health Centers)
- Manufacturers, technicians, logistics and warehouse operators, and distributors of medical equipment, personal protective equipment (PPE), medical gases, pharmaceuticals, blood and blood products, vaccines, testing materials, laboratory supplies, cleaning, sanitizing, disinfecting or sterilization supplies, and tissue and paper towel products
- Public health / community health workers, including those who compile, model, analyze and communicate public health information
- Blood and plasma donors and the employees of the organizations that operate and manage related activities
- Workers that manage health plans, billing, and health information, who cannot practically work remotely
- Workers who conduct community-based public health functions, conducting epidemiologic surveillance, compiling, analyzing and communicating public health information, who cannot practically work remotely
- Workers performing cybersecurity functions at healthcare and public health facilities, who cannot practically work remotely
- Workers conducting research critical to COVID-19 response
- Workers performing security, incident management, and emergency operations functions at or on behalf of healthcare entities including healthcare coalitions, who cannot practically work remotely
- Workers who support food, shelter, and social services, and other necessities of life for economically disadvantaged or otherwise needy individuals, such as those residing in shelters
- Pharmacy employees necessary for filling prescriptions
- Workers performing mortuary services, including funeral homes, crematoriums, and cemetery workers
- Workers who coordinate with other organizations to ensure the proper recovery, handling, identification, transportation, tracking, storage, and disposal of human remains and personal effects; certify cause of death; and facilitate access to mental/behavioral health services to the family members, responders, and survivors of an incident

CONNECT WITH US
www.cisa.gov

For more information,
email CISA.CAT@cisa.dhs.gov



[Linkedin.com/company/cybersecurity-and-infrastructure-security-agency](https://www.linkedin.com/company/cybersecurity-and-infrastructure-security-agency)



@CISAgov | @cyber | @uscert_gov



[Facebook.com/CISA](https://www.facebook.com/CISA)

LAW ENFORCEMENT, PUBLIC SAFETY, FIRST RESPONDERS

- Personnel in emergency management, law enforcement, Emergency Management Systems, fire, and corrections, including front line and management
- Emergency Medical Technicians
- 911 call center employees
- Fusion Center employees
- Hazardous material responders from government and the private sector.
- Workers – including contracted vendors – who maintain digital systems infrastructure supporting law enforcement and emergency service operations.

FOOD AND AGRICULTURE

- Workers supporting groceries, pharmacies and other retail that sells food and beverage products
- Restaurant carry-out and quick serve food operations - Carry-out and delivery food employees
- Food manufacturer employees and their supplier employees—to include those employed in food processing (packers, meat processing, cheese plants, milk plants, produce, etc.) facilities; livestock, poultry, seafood slaughter facilities; pet and animal feed processing facilities; human food facilities producing by-products for animal food; beverage production facilities; and the production of food packaging
- Farm workers to include those employed in animal food, feed, and ingredient production, packaging, and distribution; manufacturing, packaging, and distribution of veterinary drugs; truck delivery and transport; farm and fishery labor needed to produce our food supply domestically
- Farm workers and support service workers to include those who field crops; commodity inspection; fuel ethanol facilities; storage facilities; and other agricultural inputs
- Employees and firms supporting food, feed, and beverage distribution, including warehouse workers, vendor-managed inventory controllers and blockchain managers
- Workers supporting the sanitation of all food manufacturing processes and operations from wholesale to retail
- Company cafeterias - in-plant cafeterias used to feed employees
- Workers in food testing labs in private industries and in institutions of higher education
- Workers essential for assistance programs and government payments
- Employees of companies engaged in the production of chemicals, medicines, vaccines, and other substances used by the food and agriculture industry, including pesticides, herbicides, fertilizers, minerals, enrichments, and other agricultural production aids
- Animal agriculture workers to include those employed in veterinary health; manufacturing and distribution of animal medical materials, animal vaccines, animal drugs, feed ingredients, feed, and bedding, etc.; transportation of live animals, animal medical materials; transportation of deceased animals for disposal; raising of animals for food; animal production operations; slaughter and packing plants and associated regulatory and government workforce
- Workers who support the manufacture and distribution of forest products, including, but not limited to timber, paper, and other wood products
- Employees engaged in the manufacture and maintenance of equipment and other infrastructure necessary to agricultural production and distribution

CONNECT WITH US
www.cisa.gov

For more information,
email CISA.CAT@cisa.dhs.gov



[Linkedin.com/company/cybersecurity-and-infrastructure-security-agency](https://www.linkedin.com/company/cybersecurity-and-infrastructure-security-agency)



@CISAgov | @cyber | @uscert_gov



[Facebook.com/CISA](https://www.facebook.com/CISA)

ENERGY

Electricity industry:

- Workers who maintain, ensure, or restore the generation, transmission, and distribution of electric power, including call centers, utility workers, reliability engineers and fleet maintenance technicians
- Workers needed for safe and secure operations at nuclear generation
- Workers at generation, transmission, and electric blackstart facilities
- Workers at Reliability Coordinator (RC), Balancing Authorities (BA), and primary and backup Control Centers (CC), including but not limited to independent system operators, regional transmission organizations, and balancing authorities
- Mutual assistance personnel
- IT and OT technology staff – for EMS (Energy Management Systems) and Supervisory Control and Data Acquisition (SCADA) systems, and utility data centers; Cybersecurity engineers; cybersecurity risk management
- Vegetation management crews and traffic workers who support
- Environmental remediation/monitoring technicians
- Instrumentation, protection, and control technicians

Petroleum workers:

- Petroleum product storage, pipeline, marine transport, terminals, rail transport, road transport
- Crude oil storage facilities, pipeline, and marine transport
- Petroleum refinery facilities
- Petroleum security operations center employees and workers who support emergency response services
- Petroleum operations control rooms/centers
- Petroleum drilling, extraction, production, processing, refining, terminal operations, transporting, and retail for use as end-use fuels or feedstocks for chemical manufacturing
- Onshore and offshore operations for maintenance and emergency response
- Retail fuel centers such as gas stations and truck stops, and the distribution systems that support them

Natural and propane gas workers:

- Natural gas transmission and distribution pipelines, including compressor stations
- Underground storage of natural gas
- Natural gas processing plants, and those that deal with natural gas liquids
- Liquefied Natural Gas (LNG) facilities
- Natural gas security operations center, natural gas operations dispatch and control rooms/centers natural gas emergency response and customer emergencies, including natural gas leak calls
- Drilling, production, processing, refining, and transporting natural gas for use as end-use fuels, feedstocks for chemical manufacturing, or use in electricity generation
- Propane gas dispatch and control rooms and emergency response and customer emergencies, including propane leak calls
- Propane gas service maintenance and restoration, including call centers

CONNECT WITH US
www.cisa.gov

For more information,
email CISA.CAT@cisa.dhs.gov



[Linkedin.com/company/cybersecurity-and-infrastructure-security-agency](https://www.linkedin.com/company/cybersecurity-and-infrastructure-security-agency)



@CISAgov | @cyber | @uscert_gov



[Facebook.com/CISA](https://www.facebook.com/CISA)

- Processing, refining, and transporting natural liquids, including propane gas, for use as end-use fuels or feedstocks for chemical manufacturing
- Propane gas storage, transmission, and distribution centers

WATER AND WASTEWATER

Employees needed to operate and maintain drinking water and wastewater/drainage infrastructure, including:

- Operational staff at water authorities
- Operational staff at community water systems
- Operational staff at wastewater treatment facilities
- Workers repairing water and wastewater conveyances and performing required sampling or monitoring
- Operational staff for water distribution and testing
- Operational staff at wastewater collection facilities
- Operational staff and technical support for SCADA Control systems
- Chemical disinfectant suppliers for wastewater and personnel protection
- Workers that maintain digital systems infrastructure supporting water and wastewater operations

TRANSPORTATION AND LOGISTICS

- Employees supporting or enabling transportation functions, including dispatchers, maintenance and repair technicians, warehouse workers, truck stop and rest area workers, and workers that maintain and inspect infrastructure (including those that require cross-border travel)
- Employees of firms providing services that enable logistics operations, including cooling, storing, packaging, and distributing products for wholesale or retail sale or use.
- Mass transit workers
- Workers responsible for operating dispatching passenger, commuter and freight trains and maintaining rail infrastructure and equipment
- Maritime transportation workers - port workers, mariners, equipment operators
- Truck drivers who haul hazardous and waste materials to support critical infrastructure, capabilities, functions, and services
- Automotive repair and maintenance facilities
- Manufacturers and distributors (to include service centers and related operations) of packaging materials, pallets, crates, containers, and other supplies needed to support manufacturing, packaging staging and distribution operations
- Postal and shipping workers, to include private companies
- Employees who repair and maintain vehicles, aircraft, rail equipment, marine vessels, and the equipment and infrastructure that enables operations that encompass movement of cargo and passengers
- Air transportation employees, including air traffic controllers, ramp personnel, aviation security, and aviation management
- Workers who support the maintenance and operation of cargo by air transportation, including flight crews, maintenance, airport operations, and other on- and off- airport facilities workers

CONNECT WITH US
www.cisa.gov

For more information,
email CISA.CAT@cisa.dhs.gov



[Linkedin.com/company/cybersecurity-and-infrastructure-security-agency](https://www.linkedin.com/company/cybersecurity-and-infrastructure-security-agency)



[@CISAgov](https://twitter.com/CISAgov) | [@cyber](https://twitter.com/cyber) | [@uscert_gov](https://twitter.com/uscert_gov)



[Facebook.com/CISA](https://www.facebook.com/CISA)

PUBLIC WORKS

- Workers who support the operation, inspection, and maintenance of essential dams, locks and levees
- Workers who support the operation, inspection, and maintenance of essential public works facilities and operations, including bridges, water and sewer main breaks, fleet maintenance personnel, construction of critical or strategic infrastructure, traffic signal maintenance, emergency location services for buried utilities, maintenance of digital systems infrastructure supporting public works operations, and other emergent issues
- Workers such as plumbers, electricians, exterminators, and other service providers who provide services that are necessary to maintaining the safety, sanitation, and essential operation of residences
- Support, such as road and line clearing, to ensure the availability of needed facilities, transportation, energy and communications
- Support to ensure the effective removal, storage, and disposal of residential and commercial solid waste and hazardous waste

COMMUNICATIONS AND INFORMATION TECHNOLOGY

Communications:

- Maintenance of communications infrastructure- including privately owned and maintained communication systems- supported by technicians, operators, call-centers, wireline and wireless providers, cable service providers, satellite operations, undersea cable landing stations, Internet Exchange Points, and manufacturers and distributors of communications equipment
- Workers who support radio, television, and media service, including, but not limited to front line news reporters, studio, and technicians for newsgathering and reporting
- Workers at Independent System Operators and Regional Transmission Organizations, and Network Operations staff, engineers and/or technicians to manage the network or operate facilities
- Engineers, technicians and associated personnel responsible for infrastructure construction and restoration, including contractors for construction and engineering of fiber optic cables
- Installation, maintenance and repair technicians that establish, support or repair service as needed
- Central office personnel to maintain and operate central office, data centers, and other network office facilities
- Customer service and support staff, including managed and professional services as well as remote providers of support to transitioning employees to set up and maintain home offices, who interface with customers to manage or support service environments and security issues, including payroll, billing, fraud, and troubleshooting
- Dispatchers involved with service repair and restoration

Information Technology:

- Workers who support command centers, including, but not limited to Network Operations Command Center, Broadcast Operations Control Center and Security Operations Command Center
- Data center operators, including system administrators, HVAC & electrical engineers, security personnel, IT managers, data transfer solutions engineers, software and hardware engineers, and database administrators
- Client service centers, field engineers, and other technicians supporting critical infrastructure, as well as

CONNECT WITH US
www.cisa.gov

For more information,
email CISA.CAT@cisa.dhs.gov



[Linkedin.com/company/cybersecurity-and-infrastructure-security-agency](https://www.linkedin.com/company/cybersecurity-and-infrastructure-security-agency)



@CISAgov | @cyber | @uscert_gov



[Facebook.com/CISA](https://www.facebook.com/CISA)

Essential Critical Infrastructure Workforce

manufacturers and supply chain vendors that provide hardware and software, and information technology equipment (to include microelectronics and semiconductors) for critical infrastructure

- Workers responding to cyber incidents involving critical infrastructure, including medical facilities, SLTT governments and federal facilities, energy and utilities, and banks and financial institutions, and other critical infrastructure categories and personnel
- Workers supporting the provision of essential global, national and local infrastructure for computing services (incl. cloud computing services), business infrastructure, web-based services, and critical manufacturing
- Workers supporting communications systems and information technology used by law enforcement, public safety, medical, energy and other critical industries
- Support required for continuity of services, including janitorial/cleaning personnel

OTHER COMMUNITY-BASED GOVERNMENT OPERATIONS AND ESSENTIAL FUNCTIONS

- Workers to ensure continuity of building functions
- Security staff to maintain building access control and physical security measures
- Elections personnel
- Federal, State, and Local, Tribal, and Territorial employees who support Mission Essential Functions and communications networks
- Trade Officials (FTA negotiators; international data flow administrators)
- Weather forecasters
- Workers that maintain digital systems infrastructure supporting other critical government operations
- Workers at operations centers necessary to maintain other essential functions
- Workers who support necessary credentialing, vetting and licensing operations for transportation workers
- Customs workers who are critical to facilitating trade in support of the national emergency response supply chain
- Educators supporting public and private K-12 schools, colleges, and universities for purposes of facilitating distance learning or performing other essential functions, if operating under rules for social distancing
- Hotel Workers where hotels are used for COVID-19 mitigation and containment measures

CRITICAL MANUFACTURING

- Workers necessary for the manufacturing of materials and products needed for medical supply chains, transportation, energy, communications, food and agriculture, chemical manufacturing, nuclear facilities, the operation of dams, water and wastewater treatment, emergency services, and the defense industrial base.

HAZARDOUS MATERIALS

- Workers at nuclear facilities, workers managing medical waste, workers managing waste from pharmaceuticals and medical material production, and workers at laboratories processing test kits
- Workers who support hazardous materials response and cleanup
- Workers who maintain digital systems infrastructure supporting hazardous materials management operations

CONNECT WITH US
www.cisa.gov

For more information,
email CISA.CAT@cisa.dhs.gov



[Linkedin.com/company/cybersecurity-and-infrastructure-security-agency](https://www.linkedin.com/company/cybersecurity-and-infrastructure-security-agency)



@CISAgov | @cyber | @uscert_gov



[Facebook.com/CISA](https://www.facebook.com/CISA)

FINANCIAL SERVICES

- Workers who are needed to process and maintain systems for processing financial transactions and services (e.g., payment, clearing, and settlement; wholesale funding; insurance services; and capital markets activities)
- Workers who are needed to provide consumer access to banking and lending services, including ATMs, and to move currency and payments (e.g., armored cash carriers)
- Workers who support financial operations, such as those staffing data and security operations centers

CHEMICAL

- Workers supporting the chemical and industrial gas supply chains, including workers at chemical manufacturing plants, workers in laboratories, workers at distribution facilities, workers who transport basic raw chemical materials to the producers of industrial and consumer goods, including hand sanitizers, food and food additives, pharmaceuticals, textiles, and paper products.
- Workers supporting the safe transportation of chemicals, including those supporting tank truck cleaning facilities and workers who manufacture packaging items
- Workers supporting the production of protective cleaning and medical solutions, personal protective equipment, and packaging that prevents the contamination of food, water, medicine, among others essential products
- Workers supporting the operation and maintenance of facilities (particularly those with high risk chemicals and/or sites that cannot be shut down) whose work cannot be done remotely and requires the presence of highly trained personnel to ensure safe operations, including plant contract workers who provide inspections
- Workers who support the production and transportation of chlorine and alkali manufacturing, single-use plastics, and packaging that prevents the contamination or supports the continued manufacture of food, water, medicine, and other essential products, including glass container manufacturing

DEFENSE INDUSTRIAL BASE

- Workers who support the essential services required to meet national security commitments to the federal government and U.S. Military. These individuals, include but are not limited to, aerospace; mechanical and software engineers, manufacturing/production workers; IT support; security staff; security personnel; intelligence support, aircraft and weapon system mechanics and maintainers
- Personnel working for companies, and their subcontractors, who perform under contract to the Department of Defense providing materials and services to the Department of Defense, and government-owned/contractor-operated and government-owned/government-operated facilities

CONNECT WITH US
www.cisa.gov

For more information,
email CISA.CAT@cisa.dhs.gov



[Linkedin.com/company/cybersecurity-and-infrastructure-security-agency](https://www.linkedin.com/company/cybersecurity-and-infrastructure-security-agency)



@CISAgov | @cyber | @uscert_gov



[Facebook.com/CISA](https://www.facebook.com/CISA)

EPOLP Houston Ship Channel Marine Loading Facility Applicable LDAR rules			
Operator Name Enterprise Products Operating LLC EPOLP Houston Ship Channel Marine Loading Facility CN603211277 RN102580834	Enterprise Hydrocarbon Terminal		
	Federal Requirements	None	
	Permits	NSR Permit 97022	NSR Special Conditions SC11, SC12 28MID, 28 CNTQ