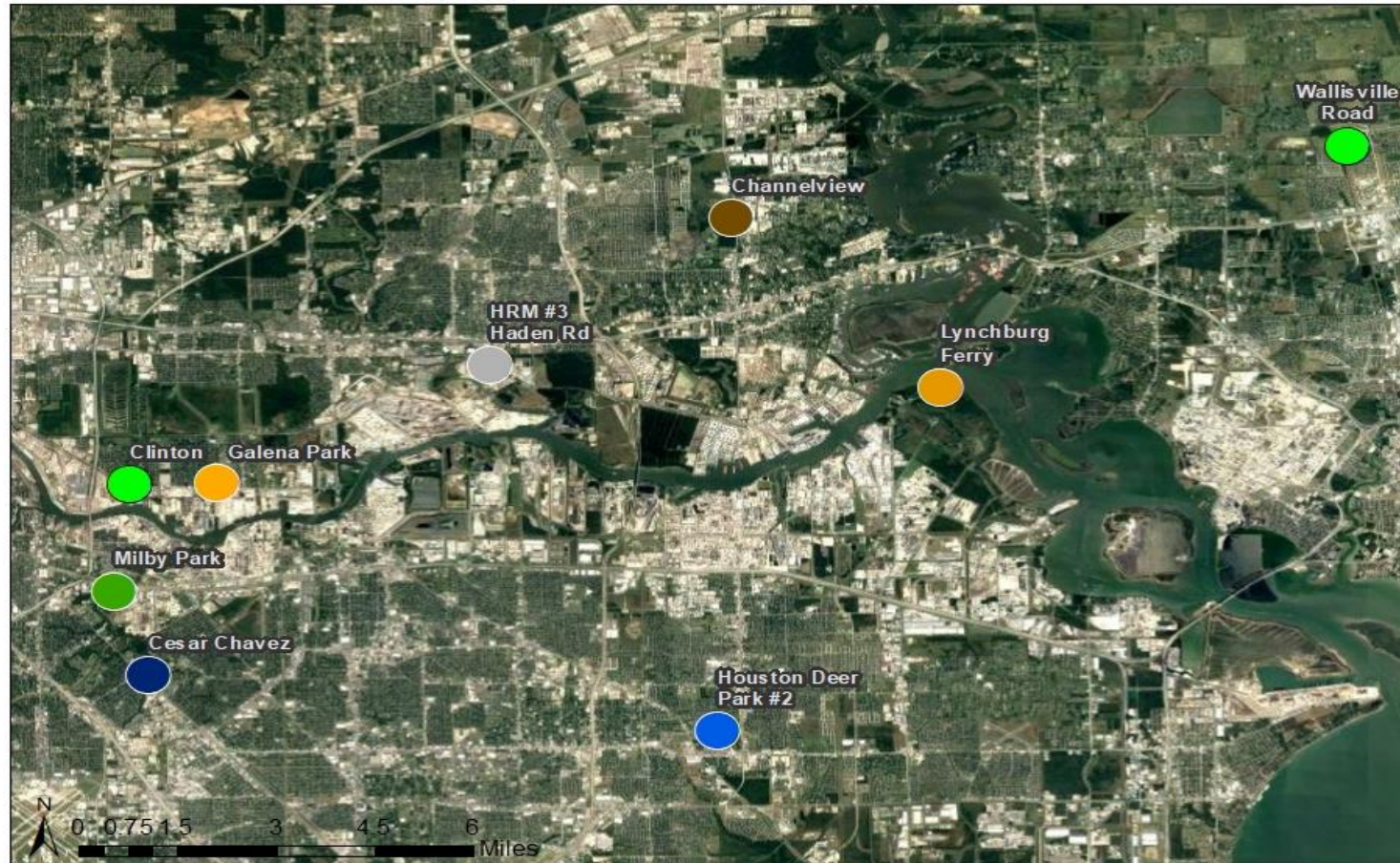


# Houston Ship Channel, Region 12

## Region 12 - Houston: Harris County AutoGC Monitoring Sites



### Texas Commission on Environmental Quality

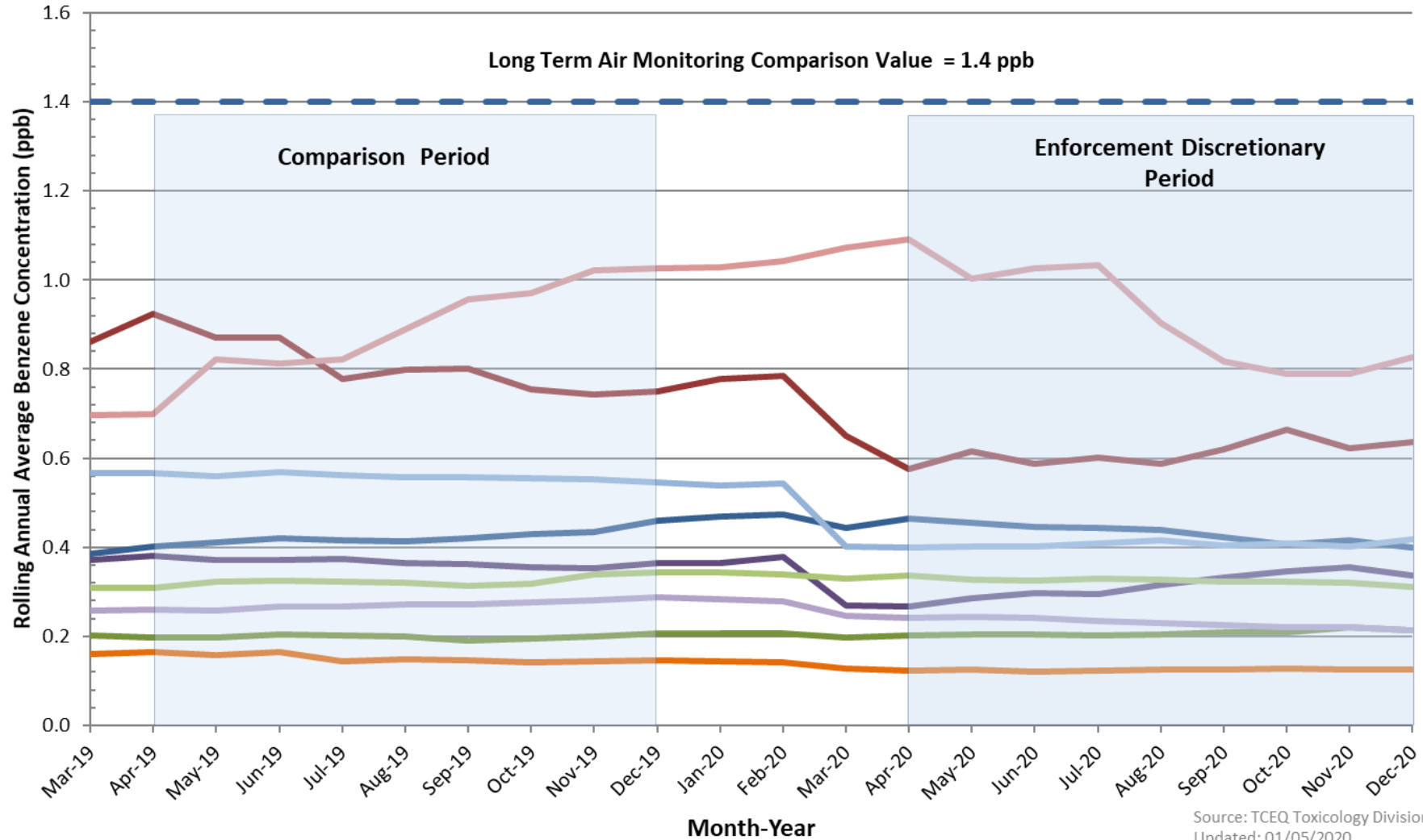
This map was generated by the Toxicology Division (TD). No claims are made to the accuracy or completeness of the data, or to the suitability of the map for a particular use. This area may contain facilities other than those identified. For more information regarding this map, please contact the TD at (512) 239-3900.

Date: 4/10/2019

# Benzene Trends in R12- Houston Ship Channel (April 2018 - December 2020)

(Rolling 12-month averages calculated using available autoGC data)

- Haden Rd.
- Lynchburg Ferry
- Milby Park
- Deer Park
- Wallisville Rd
- Channelview
- Galena Park
- Clinton Dr.
- Cesar Chavez

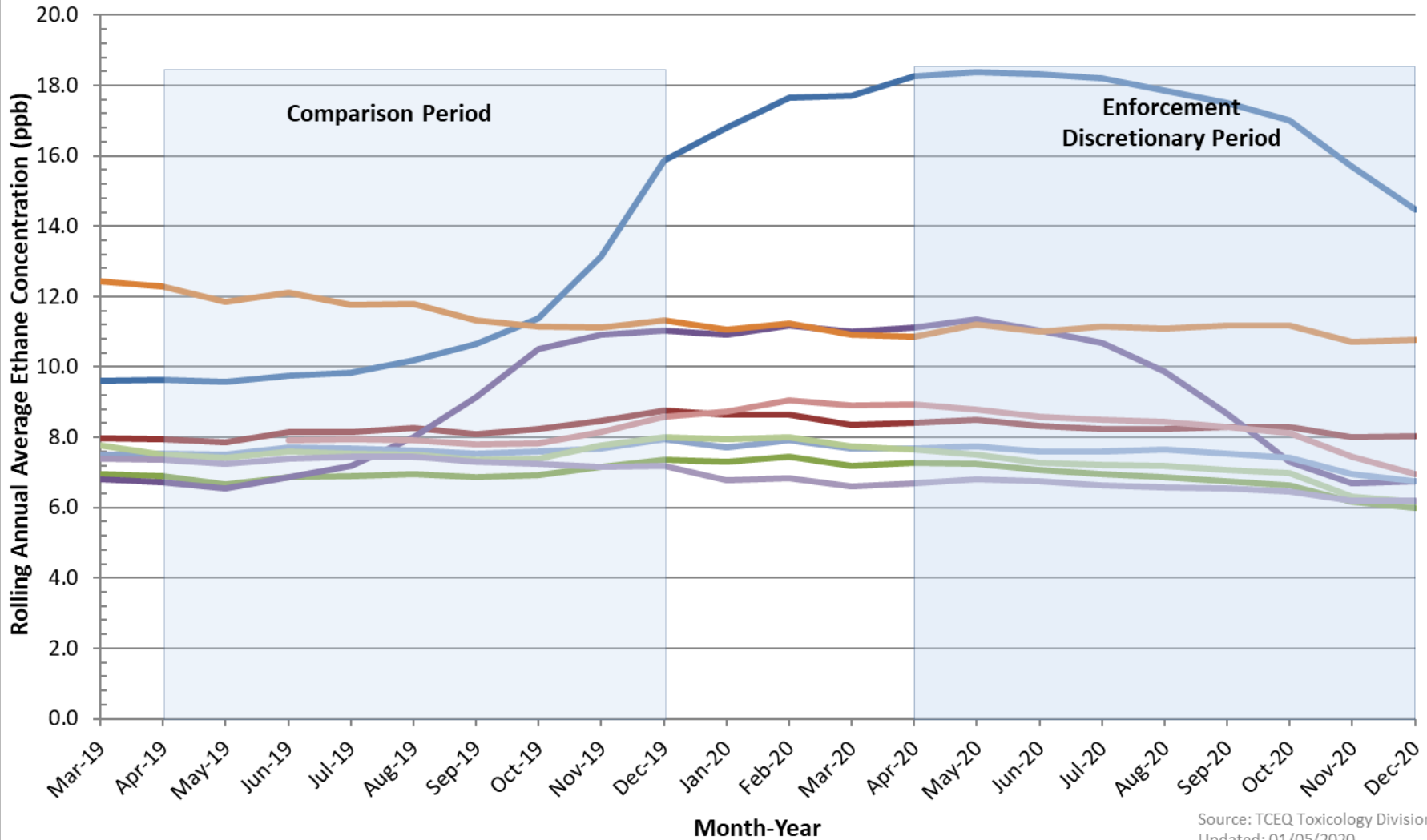


Source: TCEQ Toxicology Division  
Updated: 01/05/2020

# Ethane Trends in R12- Houston Ship Channel (April 2018 - December 2020)

(Rolling 12-month averages calculated using available autoGC data)

- Haden Rd.
- Lynchburg Ferry
- Milby Park
- Deer Park
- Wallisville Rd
- Channelview
- Galena Park
- Clinton Dr.
- Cesar Chavez

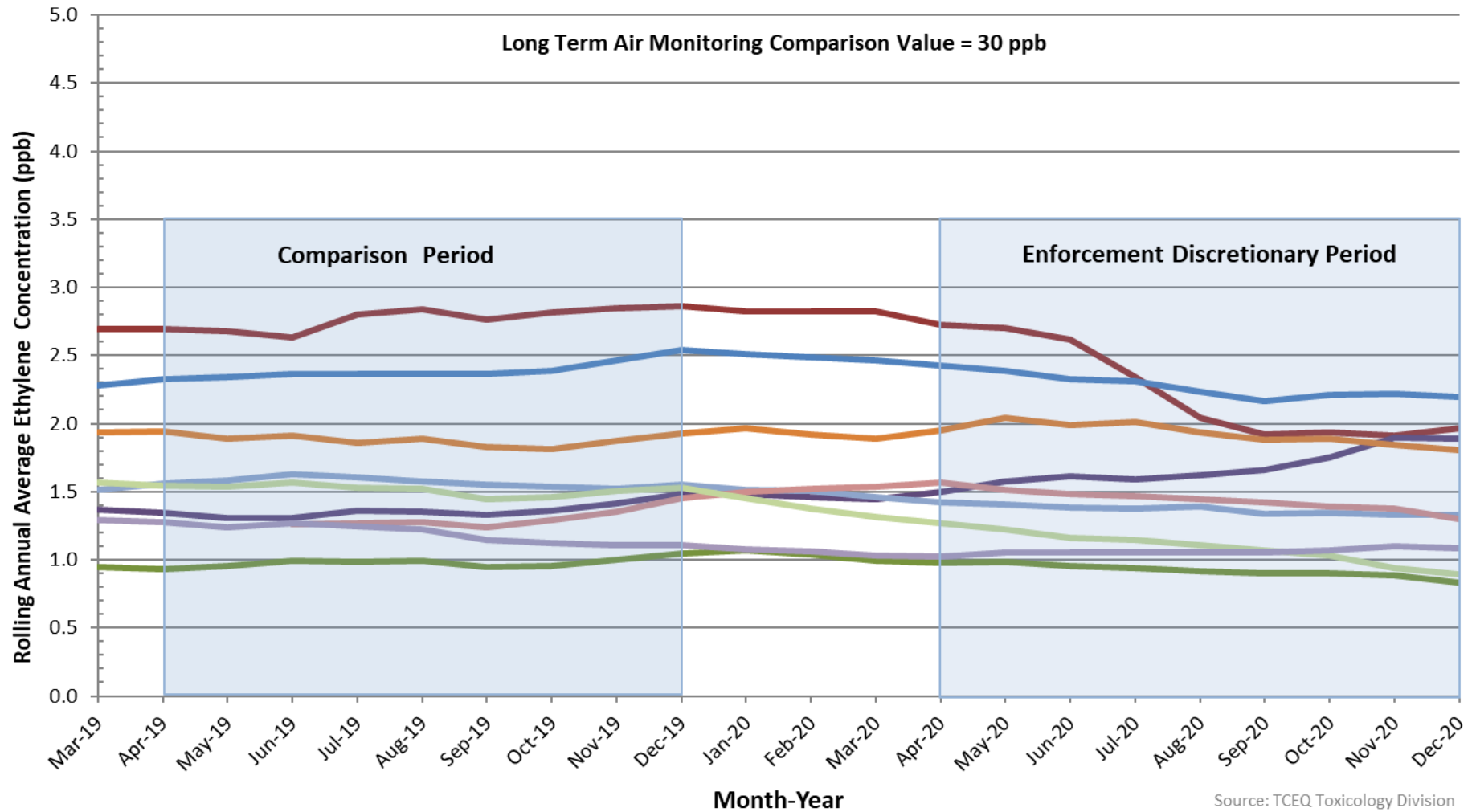


Source: TCEQ Toxicology Division  
Updated: 01/05/2020

# Ethylene Trends at R-12, Houston Ship Channel (April 2018 - December 2020)

(Rolling averages calculated using available autoGC data)

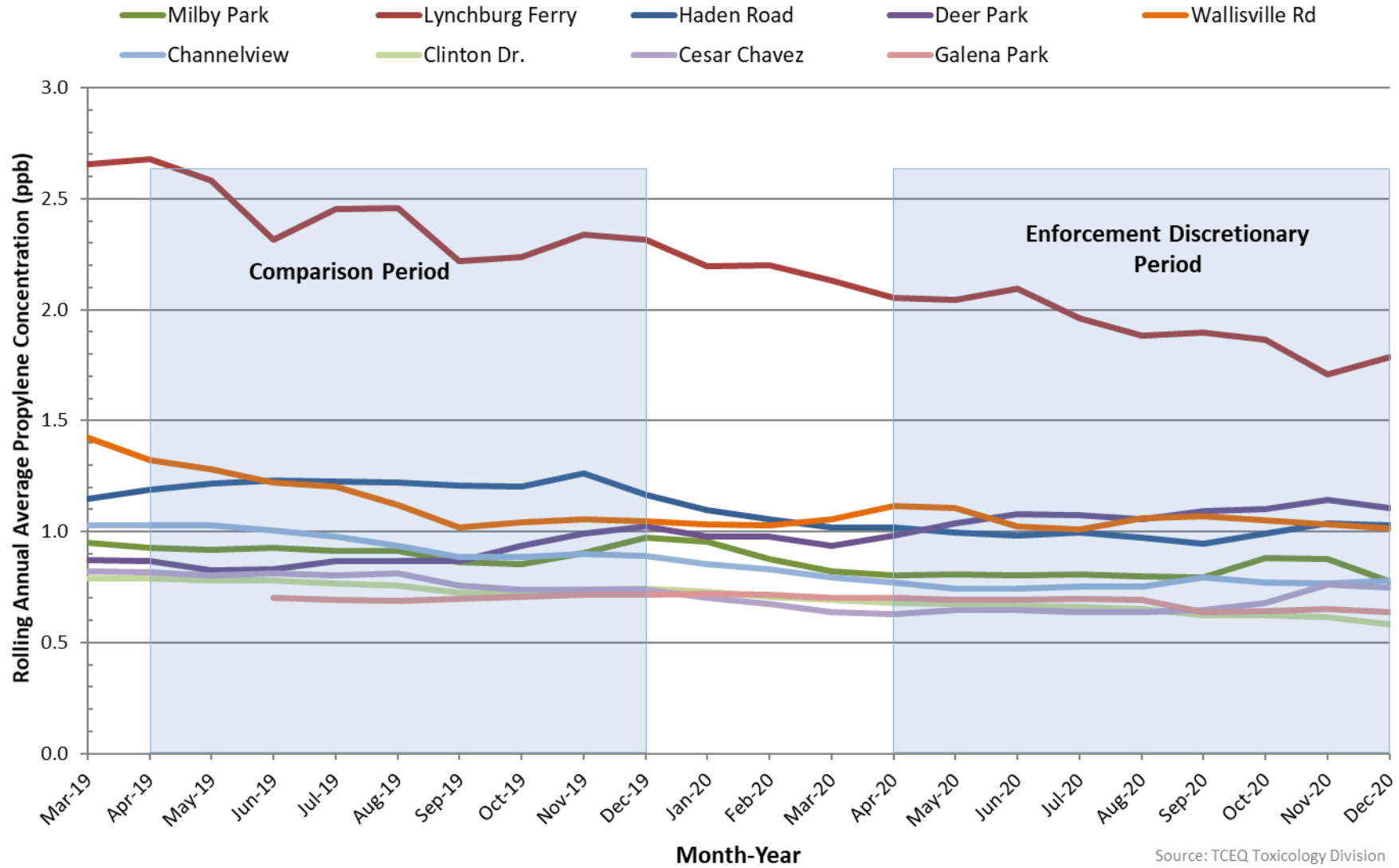
- Milby Park
- Lynchburg Ferry
- Haden Rd
- Deer Park
- Wallisville Rd
- Channelview
- Galena Park
- Clinton Dr.
- Cesar Chavez



Source: TCEQ Toxicology Division  
Updated: 01/05/2020

# Propylene Trends at R-12 Houston Ship Channel (April 2018 - December 2020)

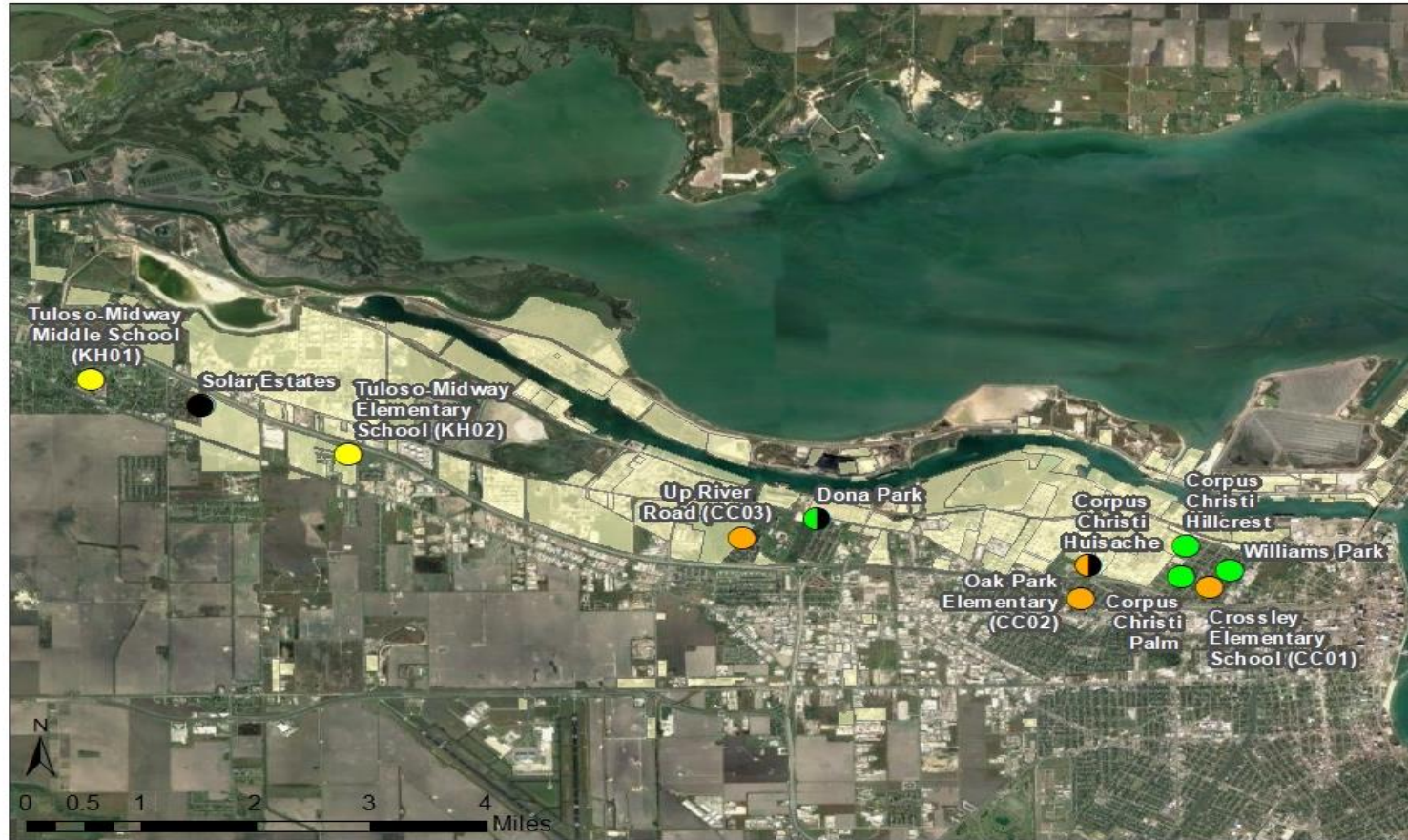
(Rolling 12-month averages calculated using available autoGC data)





# Corpus Christi Bay Area, Region 14

Air Toxics Monitor Locations in the Corpus Christi Bay Area, Nueces County, Texas

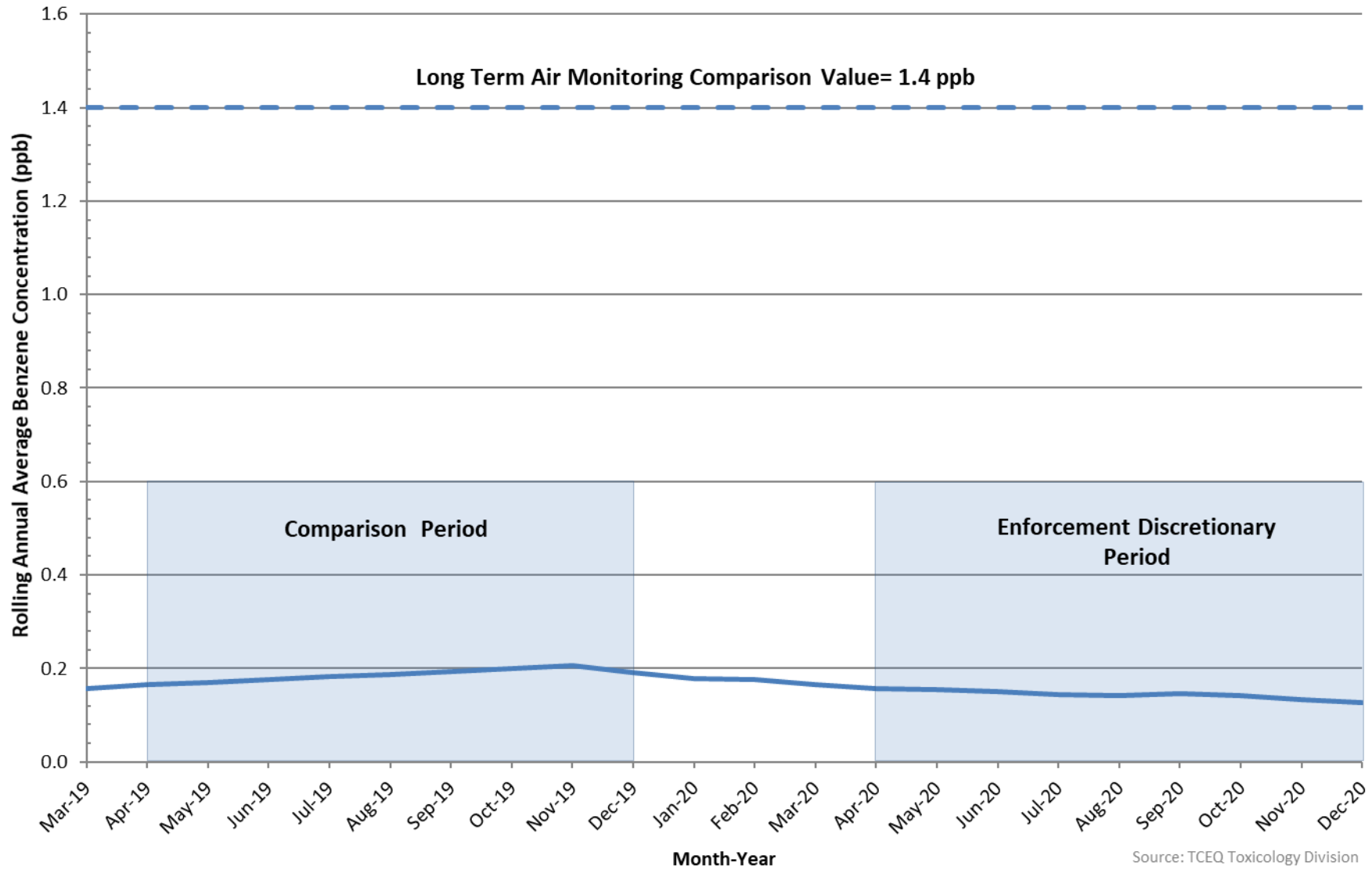


## Texas Commission on Environmental Quality

This map was generated by the Toxicology Division (TD). No claims are made to the accuracy or completeness of the data, or to the suitability of the map for a particular use. This area may contain facilities other than those identified. For more information regarding this map, please contact the TD at (512) 239-3900.

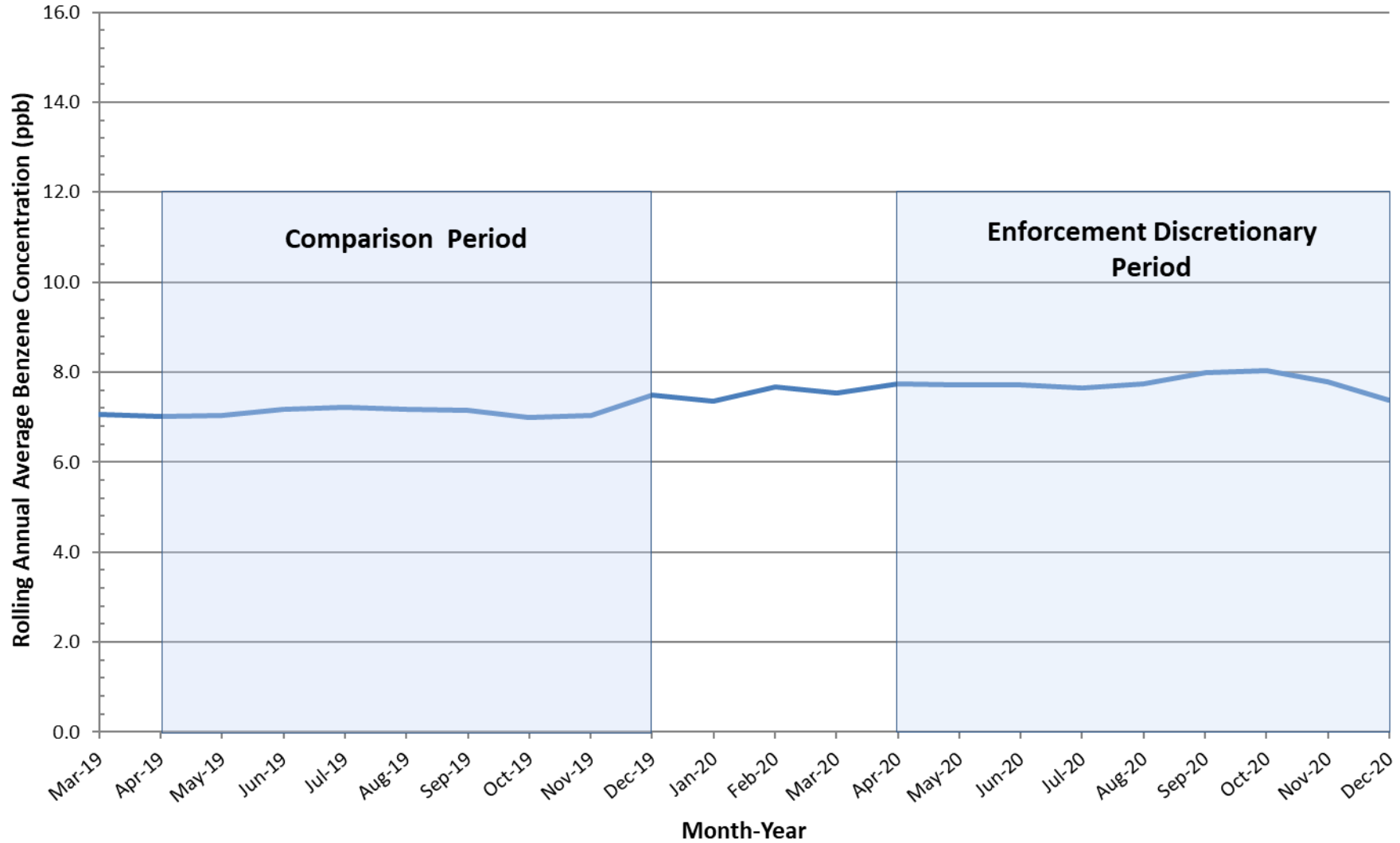
# Benzene Trends at Palm Refinery Row in R14- Corpus Christi (April 2018 - December 2020)

(Rolling 12-month averages calculated using available autoGC data)



Source: TCEQ Toxicology Division  
Updated: 01/05/2021

**Ethane Trends at Palm Refinery Row  
in R14- Corpus Christi (April 2018 - December 2020)**  
(Rolling 12-month averages calculated using available autoGC data)

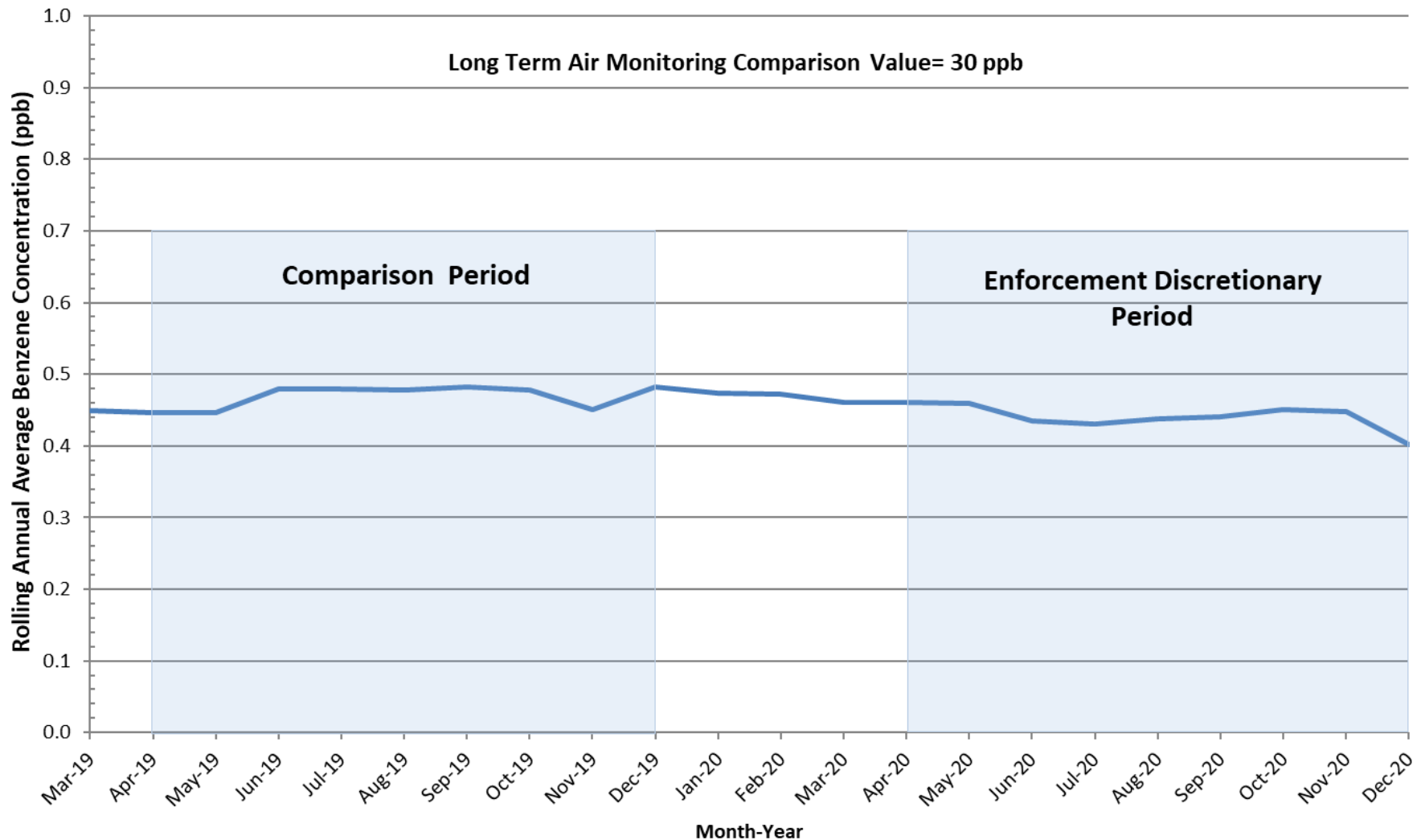


Source: TCEQ Toxicology Division  
Updated: 01/05/2021

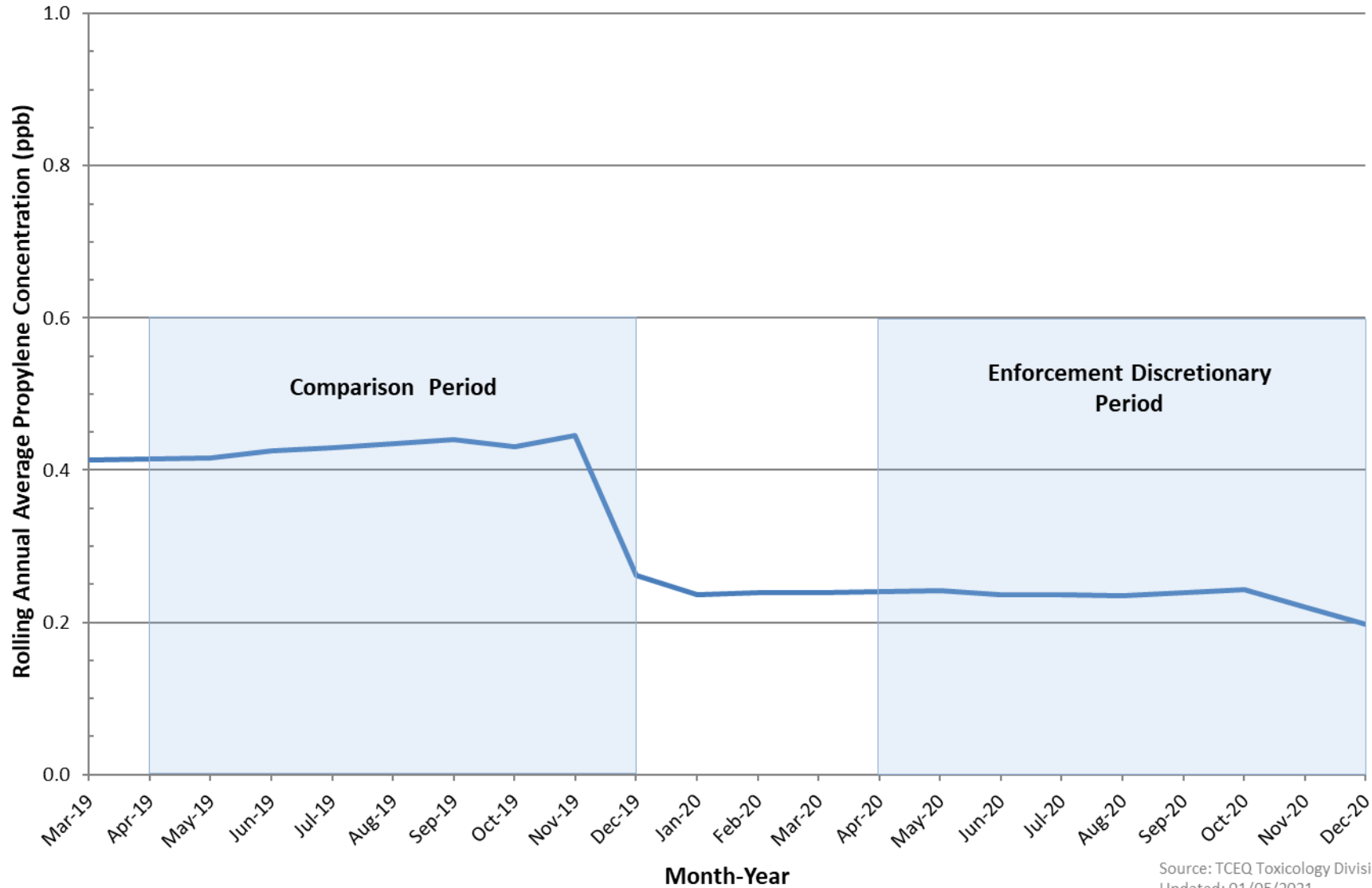


# Ethylene Trends at Palm Refinery Row in R14- Corpus Christi (April 2018 - December 2020)

(Rolling 12-month averages calculated using available autoGC data)



# Propylene Trends at Palm Refinery Row in R14 - Corpus Christi (April 2018 - December 2020) (Rolling 12-month averages calculated using available autoGC data)



Source: TCEQ Toxicology Division  
Updated: 01/05/2021