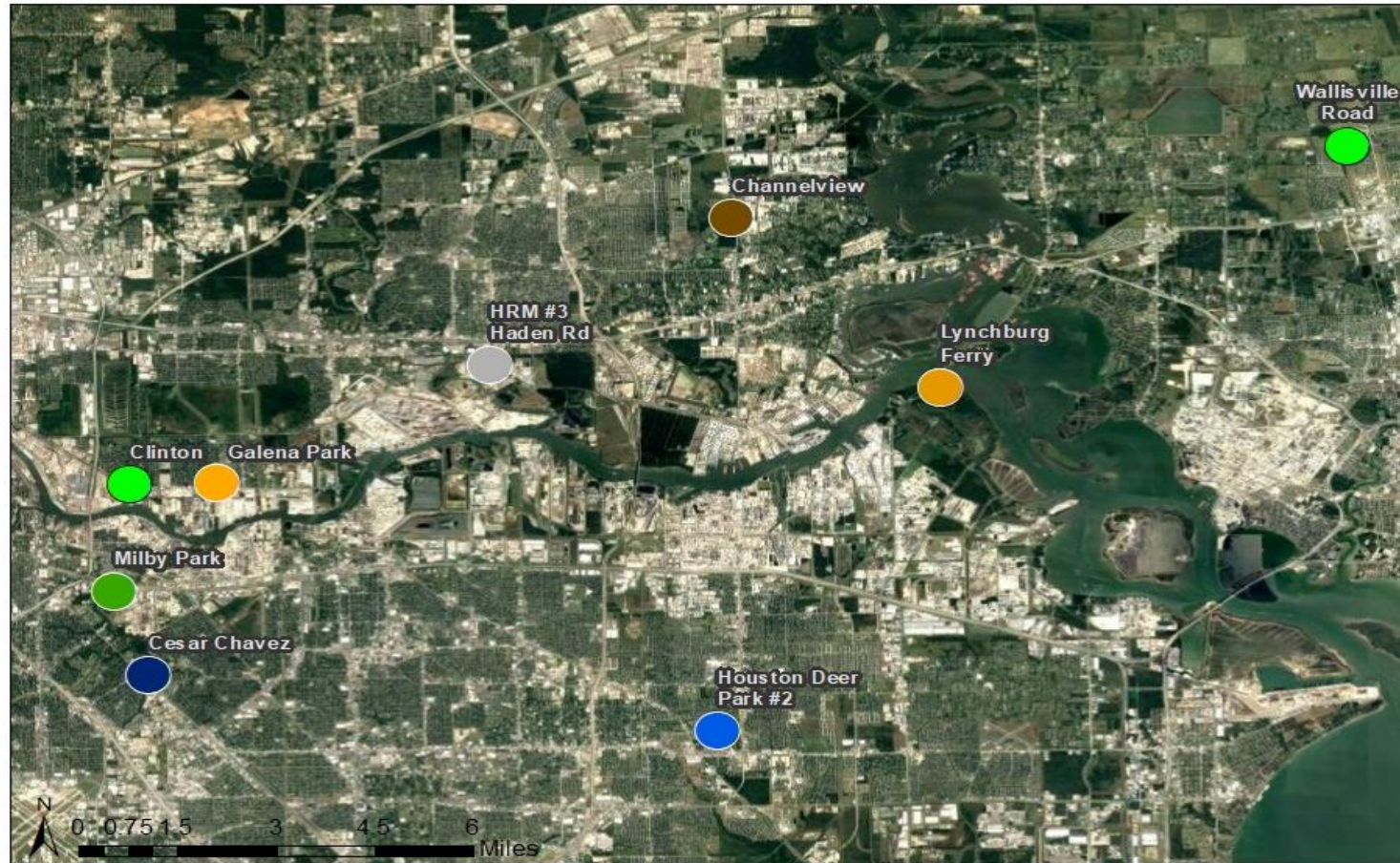


Houston Ship Channel, Region 12

Region 12 - Houston: Harris County AutoGC Monitoring Sites



Texas Commission on Environmental Quality

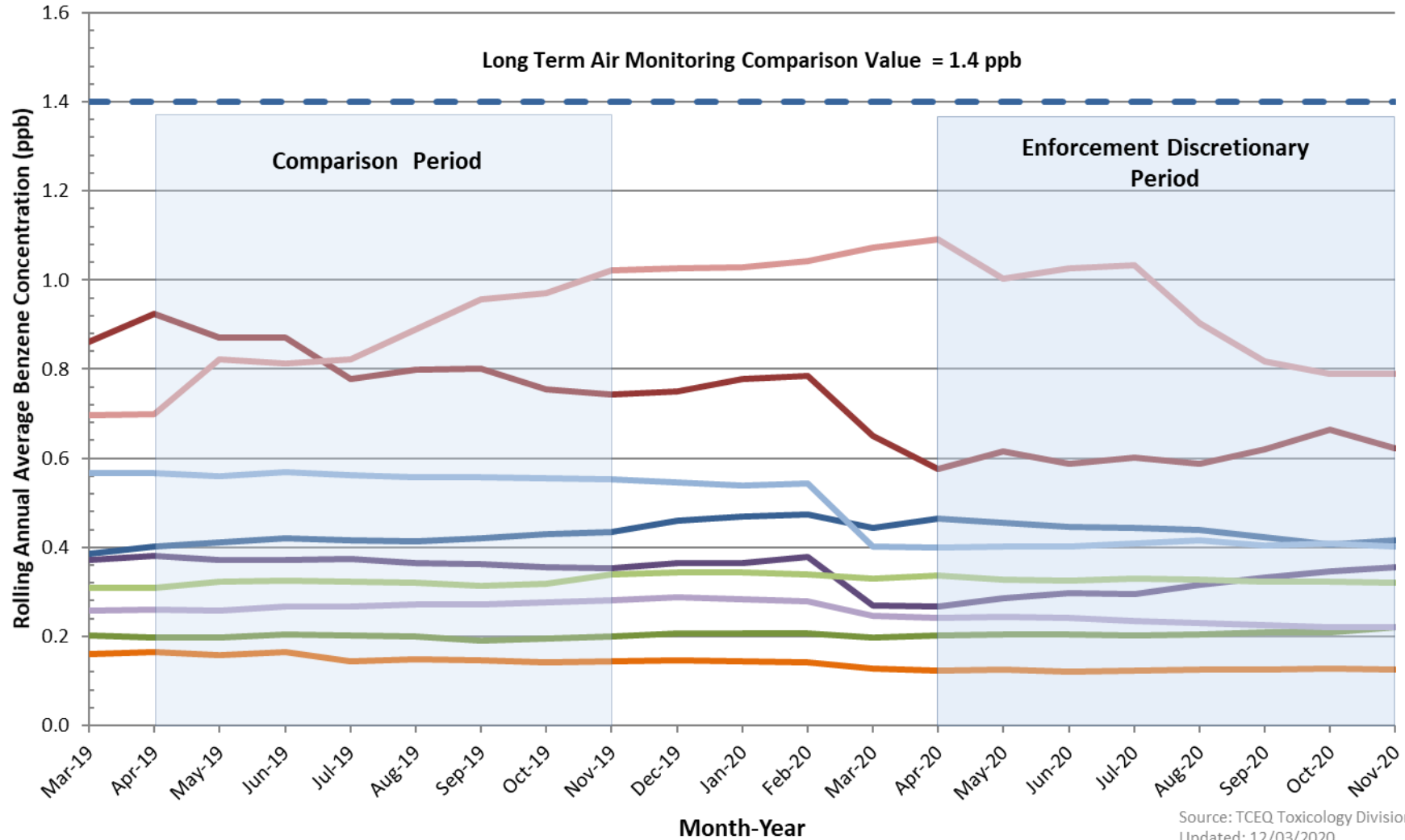
This map was generated by the Toxicology Division (TD). No claims are made to the accuracy or completeness of the data, or to the suitability of the map for a particular use. This area may contain facilities other than those identified. For more information regarding this map, please contact the TD at (512) 239-3900.

Date: 4/10/2019

Benzene Trends in R12- Houston Ship Channel (April 2018 - November 2020)

(Rolling 12-month averages calculated using available autoGC data)

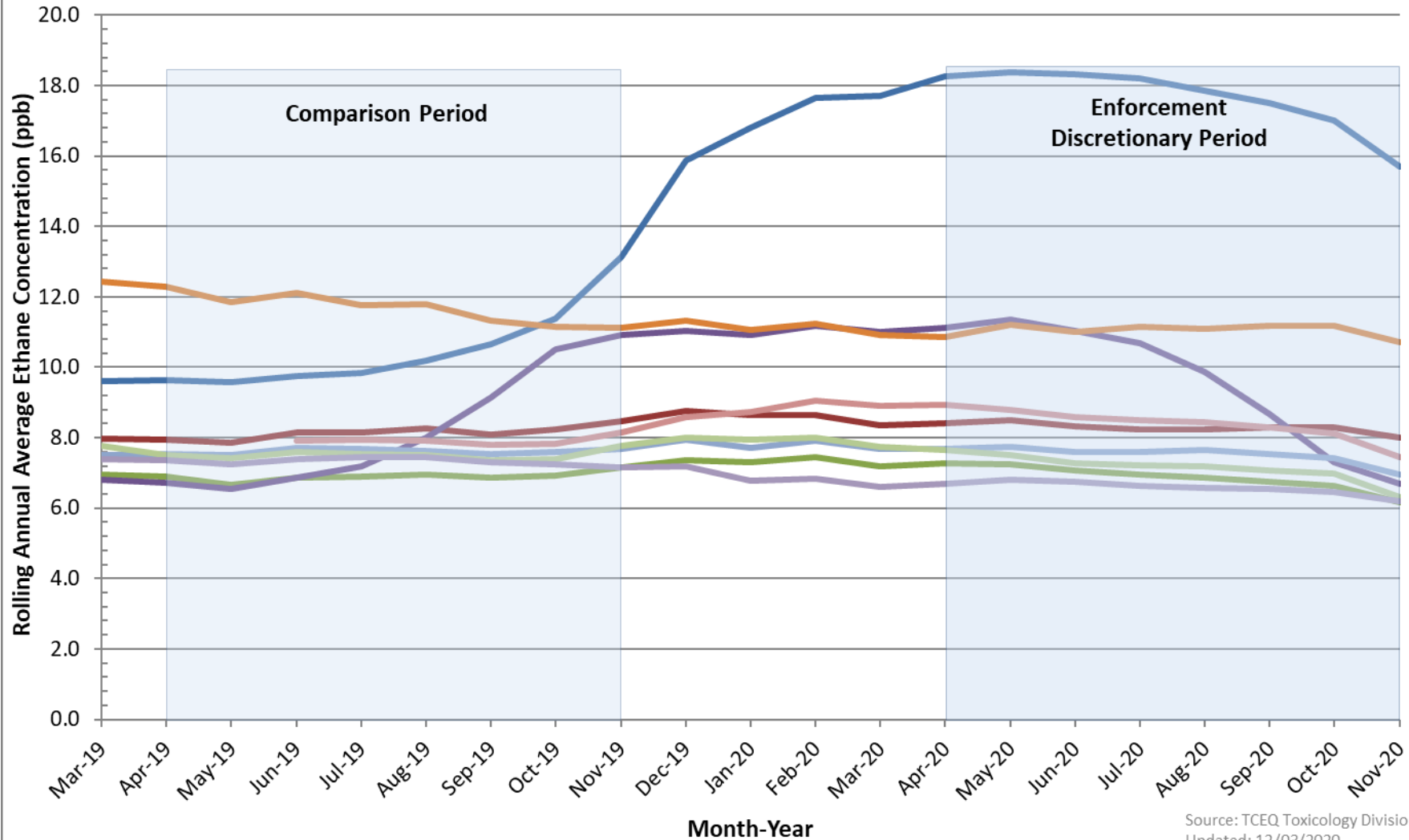
- Haden Rd.
- Lynchburg Ferry
- Milby Park
- Deer Park
- Wallisville Rd
- Channelview
- Galena Park
- Clinton Dr.
- Cesar Chavez



Ethane Trends in R12- Houston Ship Channel (April 2018 - November 2020)

(Rolling 12-month averages calculated using available autoGC data)

- Haden Rd.
- Lynchburg Ferry
- Milby Park
- Deer Park
- Wallisville Rd
- Channelview
- Galena Park
- Clinton Dr.
- Cesar Chavez

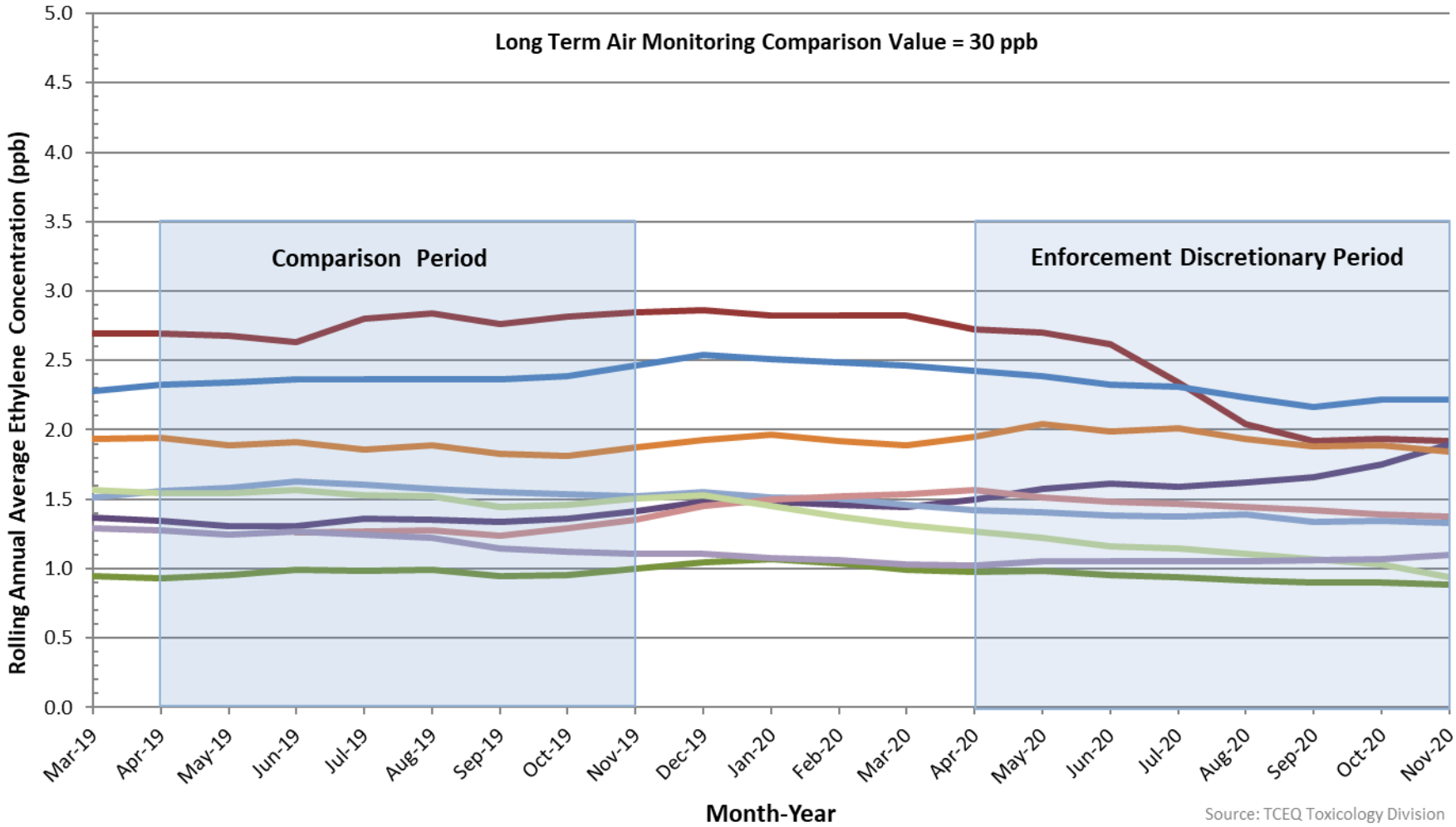


Source: TCEQ Toxicology Division
Updated: 12/03/2020

Ethylene Trends at R-12, Houston Ship Channel (April 2018 - November 2020)

(Rolling averages calculated using available autoGC data)

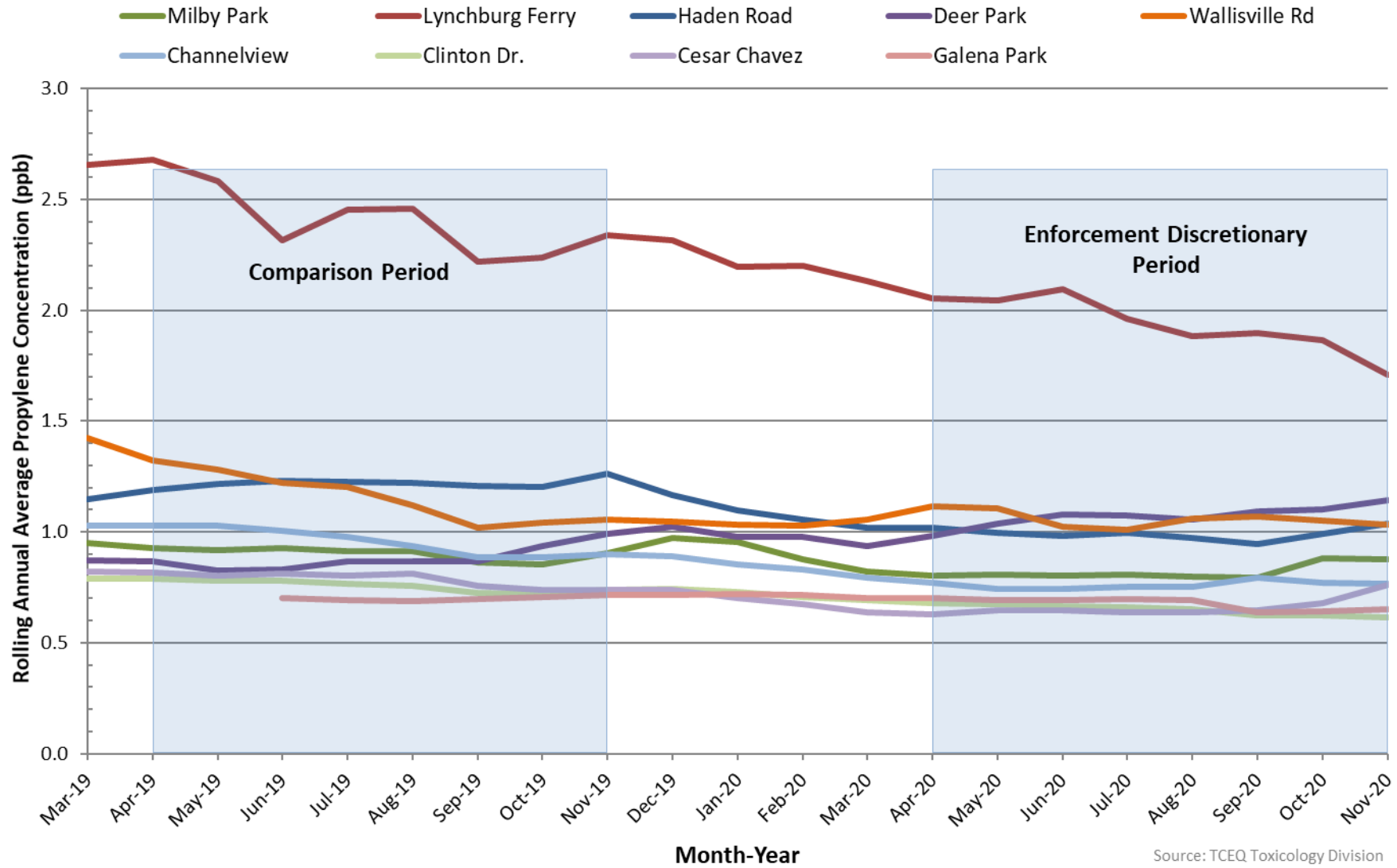
- Milby Park
- Lynchburg Ferry
- Haden Rd
- Deer Park
- Wallisville Rd
- Channelview
- Galena Park
- Clinton Dr.
- Cesar Chavez



Source: TCEQ Toxicology Division
Updated: 12/03/2020

Propylene Trends at R-12 Houston Ship Channel (April 2018 - November 2020)

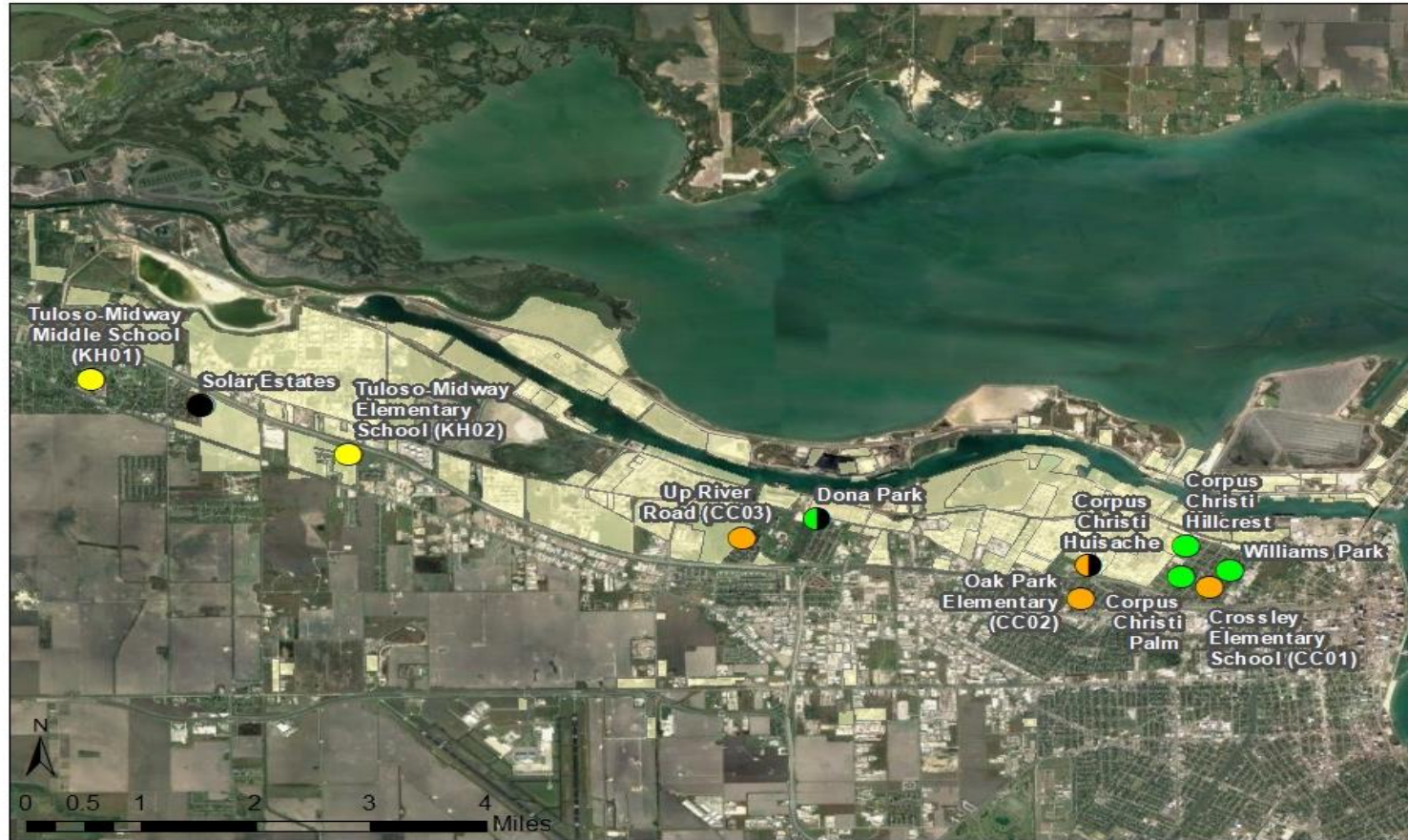
(Rolling 12-month averages calculated using available autoGC data)



Source: TCEQ Toxicology Division
Updated: 12/03/2020

Corpus Christi Bay Area, Region 14

Air Toxics Monitor Locations in the Corpus Christi Bay Area, Nueces County, Texas

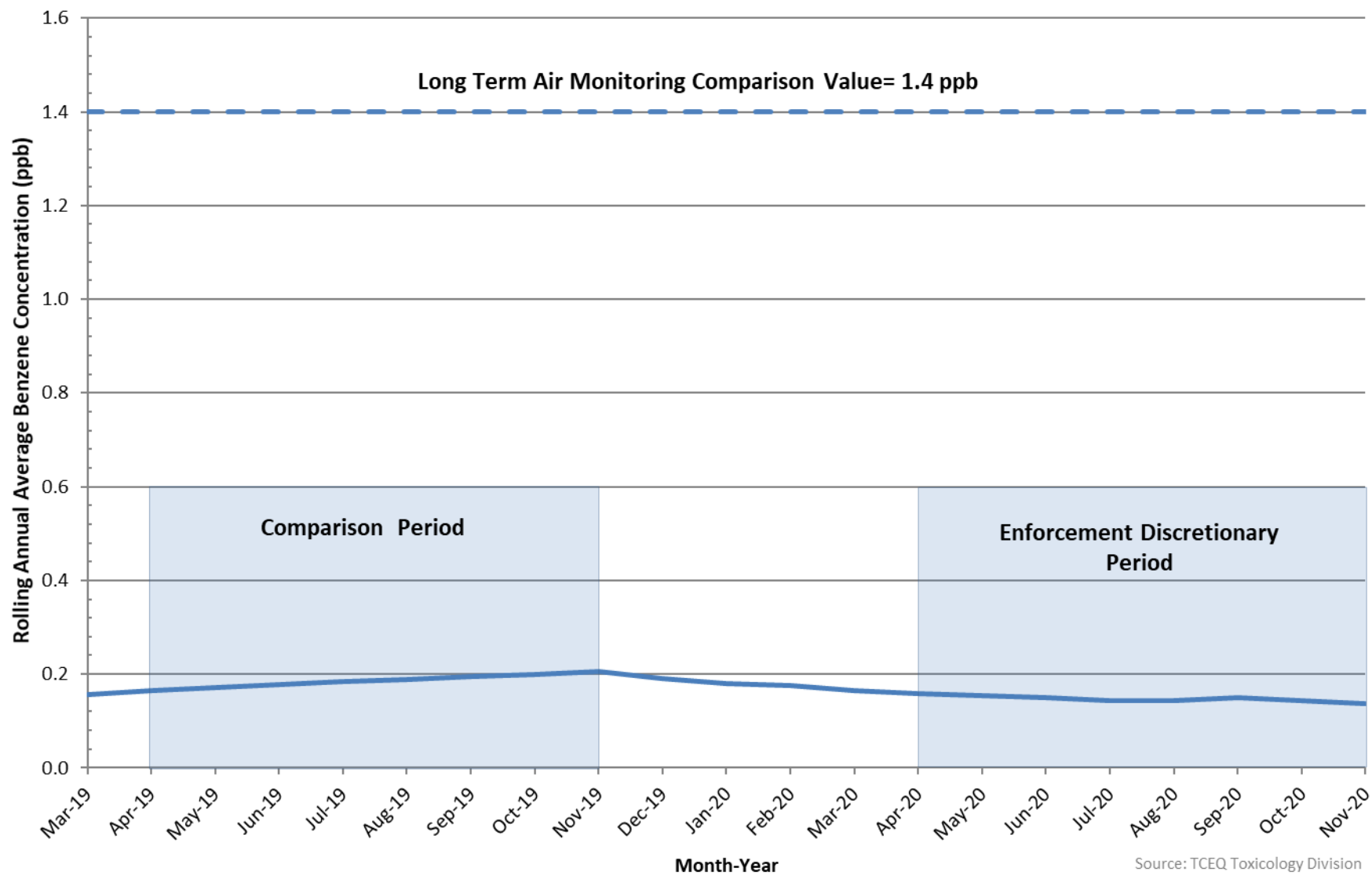


Texas Commission on Environmental Quality

This map was generated by the Toxicology Division (TD). No claims are made to the accuracy or completeness of the data, or to the suitability of the map for a particular use. This area may contain facilities other than those identified. For more information regarding this map, please contact the TD at (512) 239-3900.

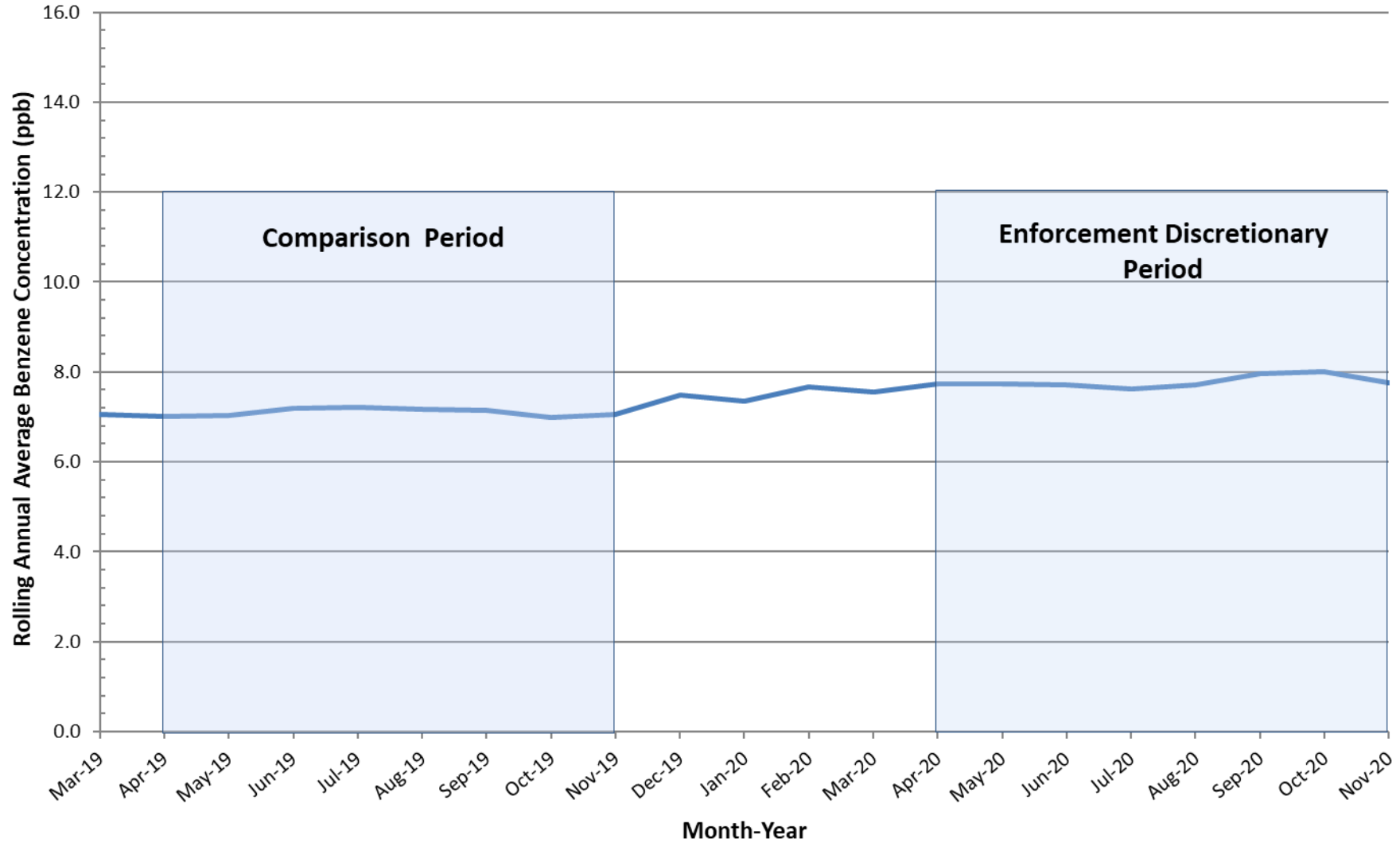
Benzene Trends at Palm Refinery Row in R14- Corpus Christi (April 2018 - November 2020)

(Rolling 12-month averages calculated using available autoGC data)



Source: TCEQ Toxicology Division
Updated: 12/02/2020

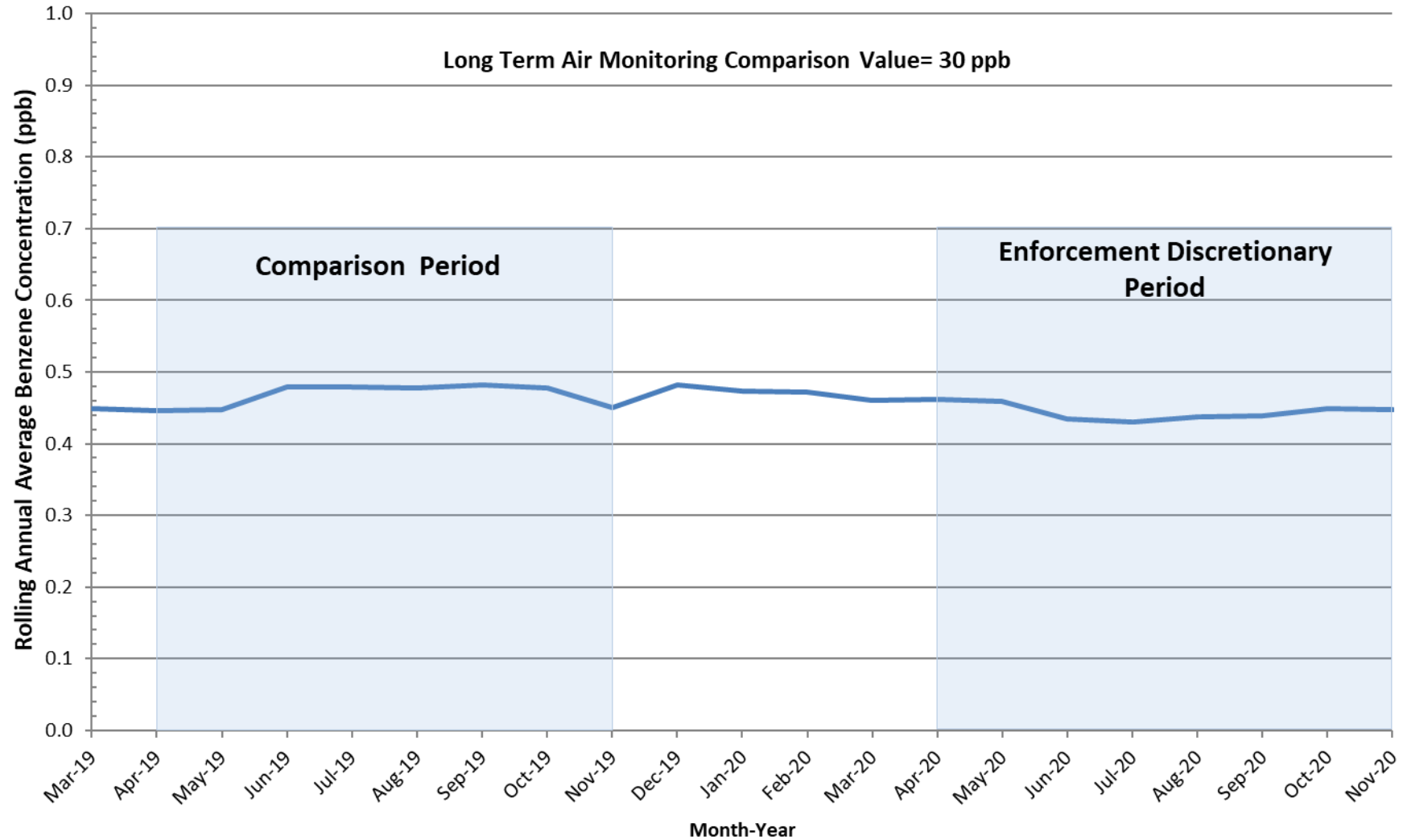
**Ethane Trends at Palm Refinery Row
in R14- Corpus Christi (April 2018 - November 2020)**
(Rolling 12-month averages calculated using available autoGC data)



Source: TCEQ Toxicology Division
Updated: 12/02/2020

Ethylene Trends at Palm Refinery Row in R14- Corpus Christi (April 2018 - November 2020)

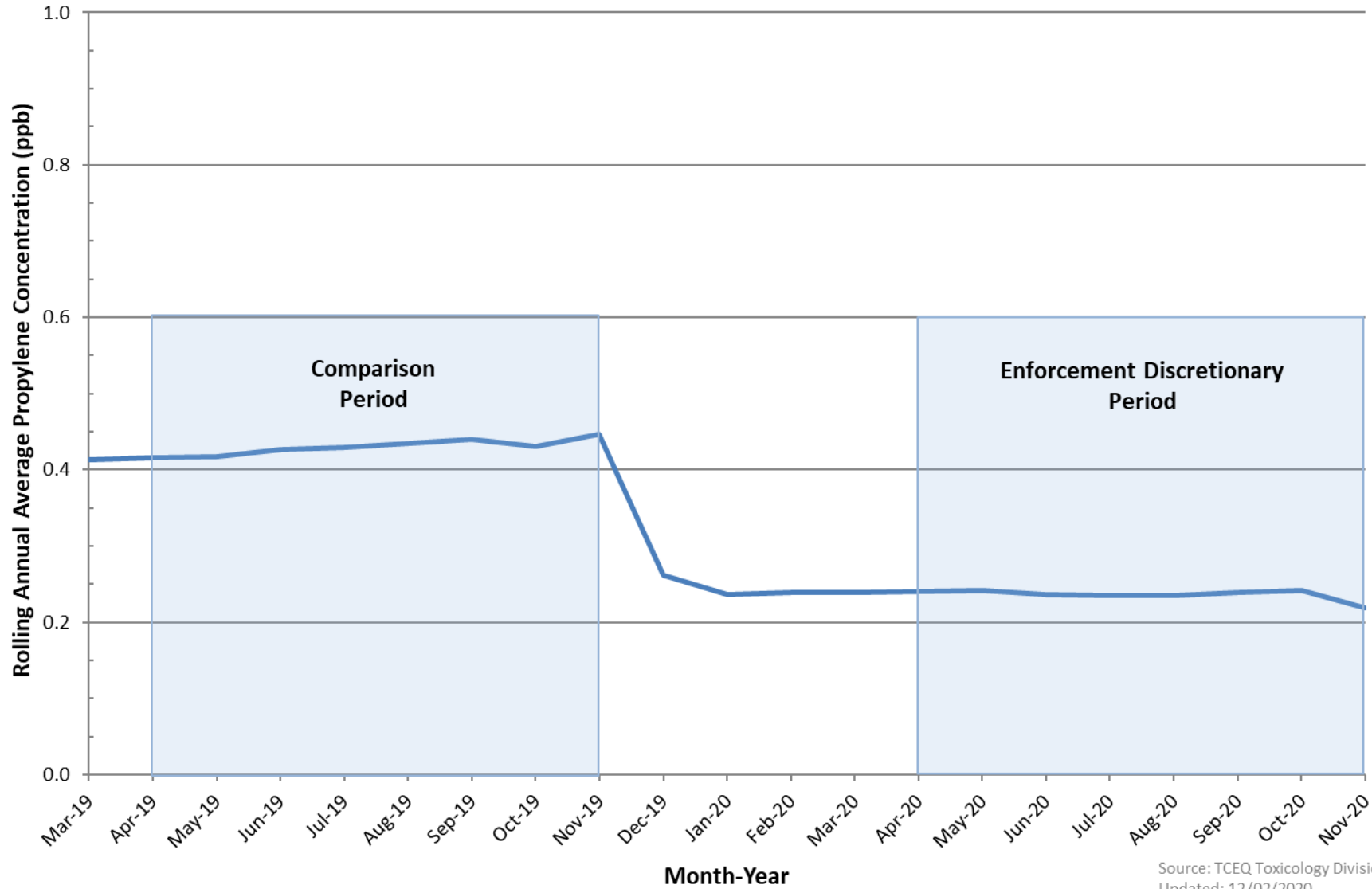
(Rolling 12-month averages calculated using available autoGC data)



Source: TCEQ Toxicology Division
Updated: 12/02/2020

Propylene Trends at Palm Refinery Row in R14 - Corpus Christi (April 2018 - November 2020)

(Rolling 12-month averages calculated using available autoGC data)



Source: TCEQ Toxicology Division
Updated: 12/02/2020