

MANAGING WILDFIRE DEBRIS

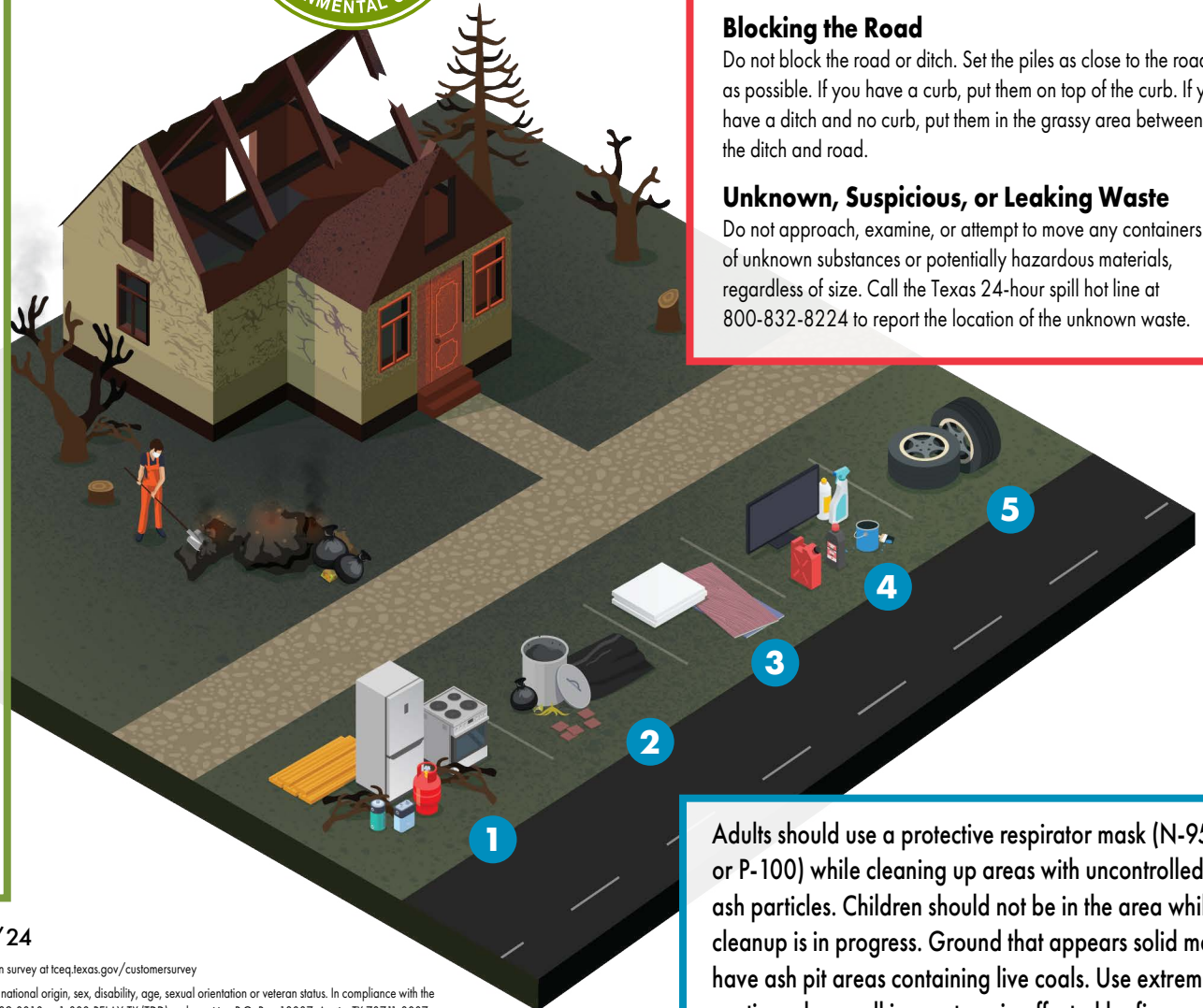
Following these guidelines when sorting wildfire-related debris will make for a speedier removal process.

Correct Way

Separate debris into the following categories:

- 1 Recycle**
 - Trees and brush
 - Clean lumber or similar wood materials that have not been painted, stained, or chemically treated
 - Refrigerators, stoves, dryers, small appliances
 - Batteries
 - Compressed gas canisters
- 2 MSW Type I Landfill**
 - Animal carcasses* (On-site burial or mounding is an alternative option)
 - Garbage, refuse, rubbish
 - Putrescible waste
 - Shingles, siding, tiles, insulation
 - Non-asbestos roof shingles (Fuel source for cement kilns with appropriate authorization is an alternative option)
- 3 MSW Type IV Landfill**
 - Painted, stained, or treated wood
 - Drywall
- 4 Household Hazardous Waste Collection**
 - Cleaning products
 - Paints, solvents
 - Oil, antifreeze, brake fluid, gasoline
 - Computers, TVs
- 5 Authorized Scrap-Tire Transporter**
 - Tires

*If you suspect the animal died from a disease, contact the Texas Animal Health Commission at www.taahc.state.tx.us.



Wrong Way

Burn Piles

Do not burn debris that was generated by a wildfire because weather conditions may promote additional wildfires.

Blocking the Road

Do not block the road or ditch. Set the piles as close to the road as possible. If you have a curb, put them on top of the curb. If you have a ditch and no curb, put them in the grassy area between the ditch and road.

Unknown, Suspicious, or Leaking Waste

Do not approach, examine, or attempt to move any containers of unknown substances or potentially hazardous materials, regardless of size. Call the Texas 24-hour spill hot line at 800-832-8224 to report the location of the unknown waste.

Adults should use a protective respirator mask (N-95 or P-100) while cleaning up areas with uncontrolled ash particles. Children should not be in the area while cleanup is in progress. Ground that appears solid may have ash pit areas containing live coals. Use extreme caution when walking on terrain affected by fire.

RG-643 | 03/24

How is our customer service? Fill out our online customer-satisfaction survey at tceq.texas.gov/customersurvey

TCEQ is an equal opportunity employer. The agency does not allow discrimination on the basis of race, color, religion, national origin, sex, disability, age, sexual orientation or veteran status. In compliance with the Americans with Disabilities Act, this document may be requested in alternate formats by contacting the TCEQ at 512-239-0010 or 1-800-RELAY-TX (TDD), or by writing P.O. Box 13087, Austin, TX 78711-3087.

Printed on recycled paper.