

Air Quality Division (AQD) Project Language Access and Public Participation Plan

This plan is used by AQD to assess whether language services (e.g., translation, interpretation) are necessary to ensure affected limited English proficiency (LEP) individuals have meaningful access to project documents. This plan also details the public participation activities of the project.

Project

30 Texas Administrative Code (TAC) Chapter 115 Industrial Adhesives Contingency Measure Correction Rulemaking (2024-024-115-AI)

Timeline Overview

- Stakeholder Meeting(s): None
- Proposal Agenda: June 12, 2024
- Newspaper Notice Publication Date: June 14, 2024
- *Texas Register* Publication Date: June 28, 2024
- Public Comment Period: June 14, 2024 through July 29, 2024
- Public Hearing Date: July 25, 2024
- Adoption Agenda: November 20, 2024
- U.S. Environmental Protection Agency (EPA) Due Date: ASAP

Language Access Plan Requirements

Project Evaluation for Need to Translate Vital Documents

The Texas Commission on Environmental Quality (TCEQ) will translate vital documents if the population eligible to be served or likely to be directly impacted by the program, activity, or service (1) meets the prioritization standard or (2) after consideration of the four-factor analysis, requires translation to meaningfully access the program, activity, or service.

AQD vital documents include relevant portions of the rule executive summary memo; a plain language summary for the project; and a rule public hearing notice.

Prioritization Standard

Is 5% or more of the population affected (or expected to be affected) by this project comprised of limited English proficiency (LEP) individuals who share a common non-English language? If yes, then vital documents must be translated.

Yes

Four-Factor Analysis

The four-factor analysis helps AQD assess whether language services are necessary to ensure affected LEP individuals have meaningful access. The four-factor analysis is an assessment that balances the following four factors: (1) demographics; (2) frequency; (3) nature and importance; and (4) available resources and costs.

Factor 1: Number or proportion of LEP individuals in the area affected by the project.

The greater the number of LEP individuals, the more likely language services will be needed. TCEQ considers individuals in Texas who speak English less than “very well” as LEP.

The 10-county Dallas-Fort Worth (DFW) nonattainment area includes an average 6% LEP population. Of the languages spoken at home by the population in the nonattainment area, 31% speak a language other than English. Spanish is the predominant language other than English at 23%, with other languages comprising no more than 3% of the population.

The eight-county Houston-Galveston-Brazoria (HGB) nonattainment area includes an average 7% LEP population. Of the languages spoken at home by the population in the nonattainment area, 32% speak a language other than English. Spanish is the predominant language other than English at 26%, with other languages comprising no more than 3% of the population.

Factor 2: Frequency with which LEP individuals in the area affected by the project seek TCEQ assistance or services related to the AQD program associated with this project.

- How frequently does staff have contact with a non-English language group?
AQD staff has not been contacted by LEP individuals in the affected areas and has conducted no specific outreach to LEP individuals in the affected areas.
- How often do LEP individuals seek TCEQ assistance or services related to AQD programs?
No LEP individuals have sought AQD assistance related to ozone nonattainment.
- What type(s) of language services, if any, are needed?
Based on this project meeting the prioritization standard for LEP Spanish-speaking population, vital document translation will be provided, and Spanish-language interpretation will be offered.

Factor 3: Nature and importance of AQD programs to the affected LEP population.

The need for LEP services could vary significantly, as actions by TCEQ programs cover a broad spectrum in terms of urgency and potential consequences.

This rule project is not related to a service, activity, or program with immediate or urgent impact to individuals.

Factor 4: Resources available and overall cost to provide LEP assistance.

EPA’s Guidance states that “reasonable steps” may cease to be reasonable where the costs substantially exceed the benefits.

The vital documents to be translated for this project would require assistance from existing staff fluent in Spanish or other arrangements. A Spanish language interpreter will be offered for the hearing, and AQD will contract for those services.

AQD Public Participation Plan

Public Involvement Plan (PIP)

Project Description

The Chapter 115 Industrial Adhesives Contingency Measure Correction Rulemaking (2024-024-115-AI) would revise rules in 30 TAC Chapter 115, Subchapter E, Division 7 to correct certain provisions adopted April 24, 2024, in a previous Chapter 115 rulemaking (2023-116-115-AI). The corrections include adding new definitions, adding and revising emissions limits related to industrial adhesive product categories, and specifying applicability requirements for Subchapter E, Division 7 under a state implementation plan (SIP) contingency scenario. These corrections, if adopted, would result in complete SIP contingency plans for the DFW and HGB 2008 ozone NAAQS severe nonattainment areas, as documented in the DFW 2008 Ozone NAAQS Severe Attainment Demonstration SIP Revision (Project No. 2023-107-SIP-NR), the HGB 2008 Ozone NAAQS Severe Attainment Demonstration SIP Revision (Project No. 2023-110-SIP-NR), and the DFW-HGB 2008 Ozone NAAQS Severe Reasonable Further Progress SIP Revision (Project No. 2023-108-SIP-NR).

Public Participation Statement

The goal of this PIP is to ensure that the plan is available and accessible to all persons regardless of race, color, national origin, disability, sex, and age.

Affected Community

The rule project would generally affect the population of the DFW 2008 ozone NAAQS nonattainment area: Collin, Dallas, Denton, Ellis, Johnson, Kaufman, Parker, Rockwall, Tarrant, and Wise Counties and the population of the HGB 2008 ozone NAAQS nonattainment area: Brazoria, Chambers, Fort Bend, Galveston, Harris, Liberty, Montgomery, and Waller Counties. Figure 3: *DFW 2008 Ozone NAAQS Nonattainment Area* shows the affected area. Figure 4: *HGB 2008 Ozone NAAQS Nonattainment Area* shows the affected area.

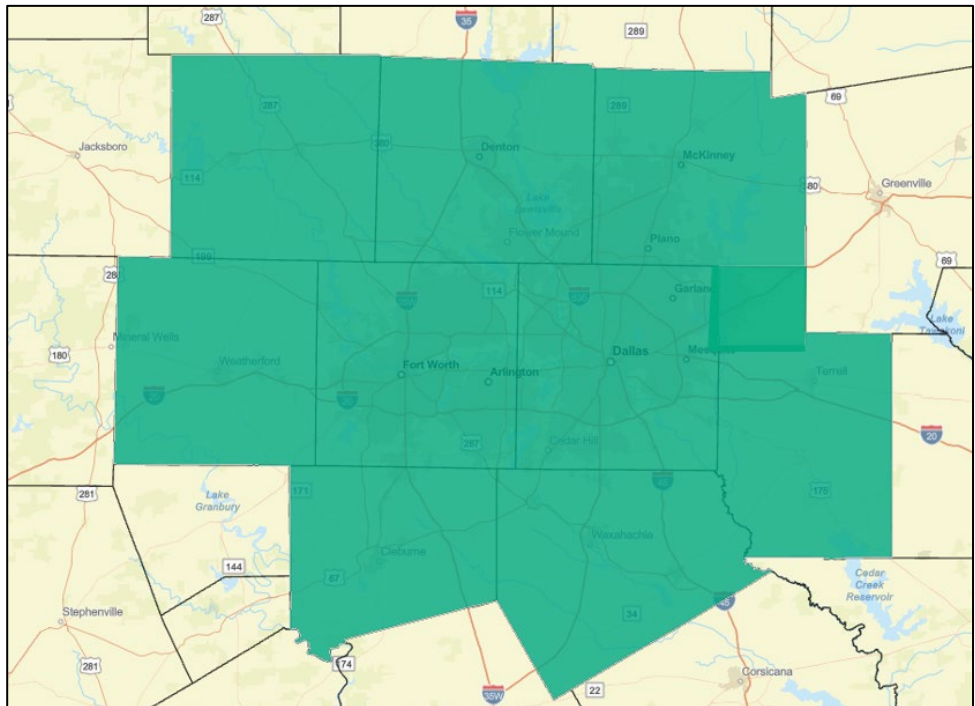


Figure 1: DFW 2008 Ozone NAAQS Nonattainment Area

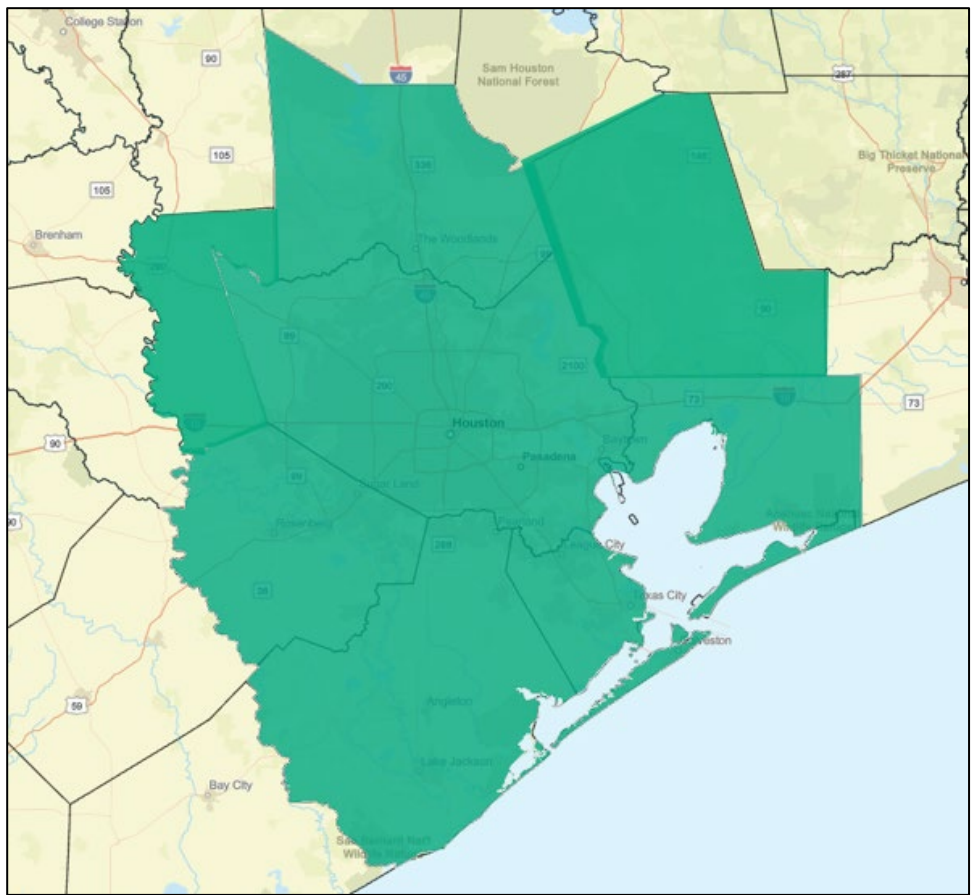


Figure 2: HGB 2008 Ozone NAAQS Nonattainment Area

Demographics

DFW 2008 Ozone NAAQS Nonattainment Area

(Accessed May 29, 2024, from EJSCREEN Community Reports, attached)

- Percent of affected population with less than high school education: **13% average (avg).**
- Percent low income for affected population: **27% avg.**
- Percent people of color population in the affected community: **55% avg.**
- Limited English households: **6% avg.**

Known community/stakeholder groups:

North Central Texas Council of Governments – membership is made up of individuals from industry, county and city government, and local environmental groups.

HGB 2008 Ozone NAAQS Nonattainment Area

(Accessed May 29, 2024, from EJSCREEN Community Reports, attached)

- Percent of affected population with less than high school education: **14%.**
- Percent low income for affected population: **29% avg.**
- Percent people of color population in the affected community: **54% avg.**

Limited English households: **7%.****Known community/stakeholder groups:**

Houston-Galveston Area Council membership is made up of individuals from industry, county and city government, and local environmental groups.

Public Outreach/Notification Plan

If the commission approves the rule proposal for publication, public hearing, and comment, Office of Legal Services/AQD will publish a hearing notification ad in the regional newspapers, which will include the web address for accessing proposal documents online. A detailed public hearing notice will be published in the *Texas Register* that includes the web address for accessing proposal documents. The detailed public hearing notice will also be mailed/emailed to officials and agencies in the region, around the state, and in neighboring states. Rule revision proposal documents will be posted to the TCEQ's [Rule Proposals](#) webpage, and a GovDelivery notification will be sent to all subscribers.

Public Documentation

- Public Hearing Notice: published in *Texas Register*; sent to officials/agencies (English/Spanish); posted to agency calendar and Rule Proposals webpage (English/Spanish)
- Newspaper Hearing Notice: published in *The Dallas Morning News* and *Houston Chronicle* in English and *Al Día* and *La Voz* in Spanish
- Proposed rulemaking (Executive Summary Memo, Plain Language Summary, Rule Preamble and Rule Language): posted to Rule Proposals webpage; linked from GovDelivery notification; linked from Newspaper Hearing Notice; linked from Public Hearing Notice; and hard copy available at TCEQ headquarters and DFW and HGB Regional Offices upon request

Spanish Translations

- Newspaper Hearing Notice: published in *Al Día* and *La Voz*
- Public Hearing Notice: (<https://www.tceq.texas.gov/rules/hearings.html>)
- Relevant Executive Summary Memo excerpts and Plain Language Summary of Proposed Rule Revision: (<https://www.tceq.texas.gov/rules/prop.html>)

Public meeting(s) and/or public hearing(s):

A public hearing will be offered virtually on July 25, 2024 at 10:00 a.m. The hearing will be conducted in English. Spanish language interpretation services will be made available. If testimony is received in Spanish, the Response to Comments portion of adopted rulemaking may be translated to Spanish.

Special Services Contact

The hearing will be conducted in English, and Spanish language interpretation services will be made available. Persons who have special communication or other accommodation needs who are planning to attend the hearing should contact Sandy Wong, Office of Legal Services at (512) 239-1802 or 1-800-RELAY-TX (TDD). Requests should be made as far in advance as possible.

Additional Requirements

None identified

Rulemaking project No. 2024-024-115-AI

ATTACHMENT AA

EJScreen Community Report 29 May, 2024





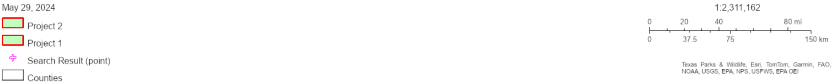
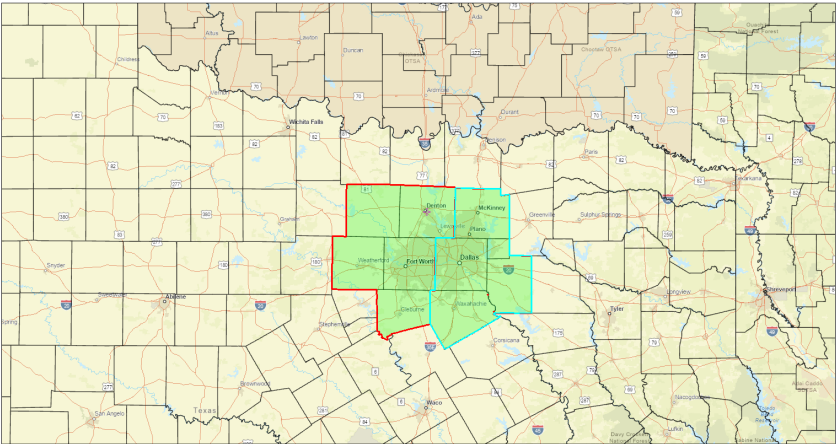
EJScreen Community Report

This report provides environmental and socioeconomic information for user-defined areas, and combines that data into environmental justice and supplemental indexes.

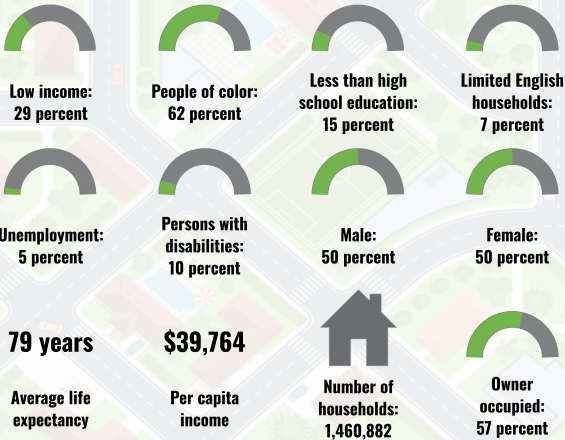
XX

County: Collin,Dallas,Ellis,Rockwall,Kaufman
Population: 4,077,890
Area in square miles: 0.00

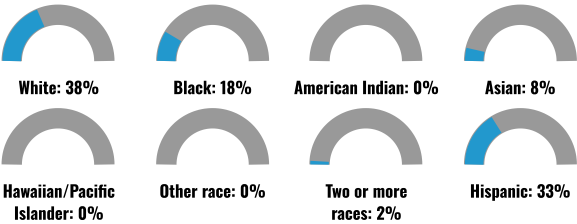
A3 Landscape



COMMUNITY INFORMATION



BREAKDOWN BY RACE



BREAKDOWN BY AGE

LANGUAGES SPOKEN AT HOME

LANGUAGE	PERCENT
English	63%
Spanish	27%
Other Indo-European	3%
Chinese (including Mandarin, Cantonese)	1%

Vietnamese	1%
Other Asian and Pacific Island	2%
Other and Unspecified	1%
Total Non-English	37%

EJScreen Community Report



LIMITED ENGLISH SPEAKING BREAKDOWN



Notes: Numbers may not sum to totals due to rounding. Hispanic population can be of any race. Source: U.S. Census Bureau, American Community Survey (ACS) 2017-2021. Life expectancy data comes from the Centers for Disease Control.

Environmental Justice & Supplemental Indexes

The environmental justice and supplemental indexes are a combination of environmental and socioeconomic information. There are thirteen EJ indexes and supplemental indexes in EJScreen reflecting the 13 environmental indicators. The indexes for a selected area are compared to those for all other locations in the state or nation. For more information and calculation details on the EJ and supplemental indexes, please visit the [EJScreen website](#).

EJ INDEXES

The EJ indexes help users screen for potential EJ concerns. To do this, the EJ index combines data on low income and people of color populations with a single environmental indicator.

SUPPLEMENTAL INDEXES

The supplemental indexes offer a different perspective on community-level vulnerability. They combine data on percent low-income, percent linguistically isolated, percent less than high school education, percent unemployed, and low life expectancy with a single environmental indicator.

These percentiles provide perspective on how the selected block group or buffer area compares to the entire state or nation.

Report for County: Collin,Dallas,Ellis,Rockwall,Kaufman

EJScreen Environmental and Socioeconomic Indicators Data

SELECTED VARIABLES	VALUE	STATE AVERAGE	PERCENTILE IN STATE	USA AVERAGE	PERCENTILE IN USA
POLLUTION AND SOURCES					
Particulate Matter ($\mu\text{g}/\text{m}^3$)	XX	XX	XX	XX	XX
Ozone (ppb)	XX	XX	XX	XX	XX
Diesel Particulate Matter ($\mu\text{g}/\text{m}^3$)	XX	XX	XX	XX	XX
Air Toxics Cancer Risk* (lifetime risk per million)	XX	XX	XX	XX	XX
Air Toxics Respiratory HI*	XX	XX	XX	XX	XX
Toxic Releases to Air	XX	XX	XX	XX	XX
Traffic Proximity (daily traffic count/distance to road)	XX	XX	XX	XX	XX
Lead Paint (% Pre-1960 Housing)	XX	XX	XX	XX	XX
Superfund Proximity (site count/km distance)	XX	XX	XX	XX	XX
RMP Facility Proximity (facility count/km distance)	XX	XX	XX	XX	XX
Hazardous Waste Proximity (facility count/km distance)	XX	XX	XX	XX	XX
Underground Storage Tanks (count/km ²)	XX	XX	XX	XX	XX
Wastewater Discharge (toxicity-weighted concentration/m distance)	XX	XX	XX	XX	XX
SOCIOECONOMIC INDICATORS					
Demographic Index	XX%	XX%	XX	XX%	XX
Supplemental Demographic Index	XX%	XX%	XX	XX%	XX
People of Color	XX%	XX%	XX	XX%	XX
Low Income	XX%	XX%	XX	XX%	XX
Unemployment Rate	XX%	XX%	XX	XX%	XX
Limited English Speaking Households	XX%	XX%	XX	XX%	XX
Less Than High School Education	XX%	XX%	XX	XX%	XX
Under Age 5	XX%	XX%	XX	XX%	XX
Over Age 64	XX%	XX%	XX	XX%	XX
Low Life Expectancy	XX%	XX%	XX	XX%	XX

*Diesel particulate matter, air toxics cancer risk, and air toxics respiratory hazard index are from the EPA's Air Toxics Data Update, which is the Agency's ongoing, comprehensive evaluation of air toxics in the United States. This effort aims to prioritize air toxics, emission sources, and locations of interest for further study. It is important to remember that the air toxics data presented here provide broad estimates of health risks over geographic areas of the country, not definitive risks to specific individuals or locations. Cancer risks and hazard indices from the Air Toxics Data Update are reported to one significant figure and any additional significant figures here are due to rounding. More information on the Air Toxics Data Update can be found at: <https://www.epa.gov/haps/air-toxics-data-update>.

Sites reporting to EPA within defined area:

Superfund XX
 Hazardous Waste, Treatment, Storage, and Disposal Facilities XX

Other community features within defined area:

Schools XX
 Hospitals XX

Water Dischargers	XX
Air Pollution	XX
Brownfields	XX
Toxic Release Inventory	XX

Places of Worship	XX
-------------------------	----

Other environmental data:

Air Non-attainment	XX
Impaired Waters	XX

Selected location contains American Indian Reservation Lands*	XX
Selected location contains a "Justice40 (CEJST)" disadvantaged community	XX
Selected location contains an EPA IRA disadvantaged community	XX

Report for County: Collin,Dallas,Ellis,Rockwall,Kaufman

EJScreen Environmental and Socioeconomic Indicators Data

HEALTH INDICATORS

INDICATOR	VALUE	STATE AVERAGE	STATE PERCENTILE	US AVERAGE	US PERCENTILE
Low Life Expectancy	17%	20%	19	20%	27
Heart Disease	4.9	5.9	32	6.1	24
Asthma	9.1	9.2	43	10	25
Cancer	4.8	5.2	41	6.1	21
Persons with Disabilities	9.3%	12.3%	34	13.4%	27

CLIMATE INDICATORS

INDICATOR	VALUE	STATE AVERAGE	STATE PERCENTILE	US AVERAGE	US PERCENTILE
Flood Risk	3%	10%	41	12%	31
Wildfire Risk	17%	30%	62	14%	82

CRITICAL SERVICE GAPS

INDICATOR	VALUE	STATE AVERAGE	STATE PERCENTILE	US AVERAGE	US PERCENTILE
Broadband Internet	11%	15%	49	14%	49
Lack of Health Insurance	18%	18%	54	9%	89

Housing Burden	XX	N/A	N/A	N/A	N/A
Transportation Access	XX	N/A	N/A	N/A	N/A
Food Desert	XX	N/A	N/A	N/A	N/A

Report for County: Collin,Dallas,Ellis,Rockwall,Kaufman



EJScreen Community Report

This report provides environmental and socioeconomic information for user-defined areas, and combines that data into environmental justice and supplemental indexes.

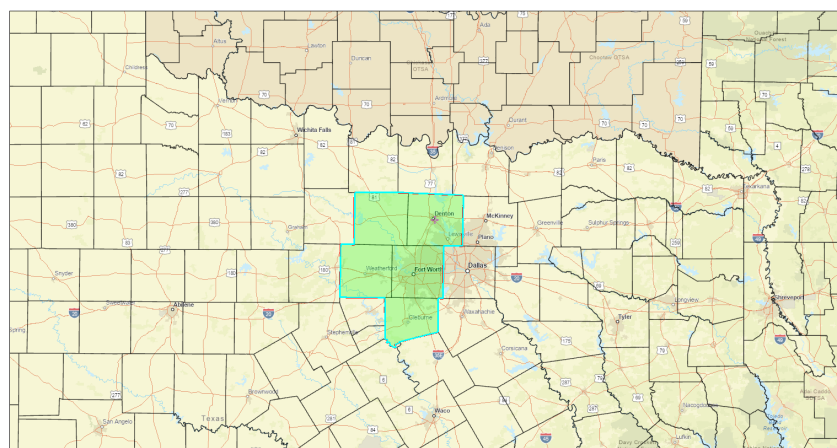
Johnson County, TX

County: Denton,Wise,Parker,Tarrant,Johnson

Population: 3,366,667

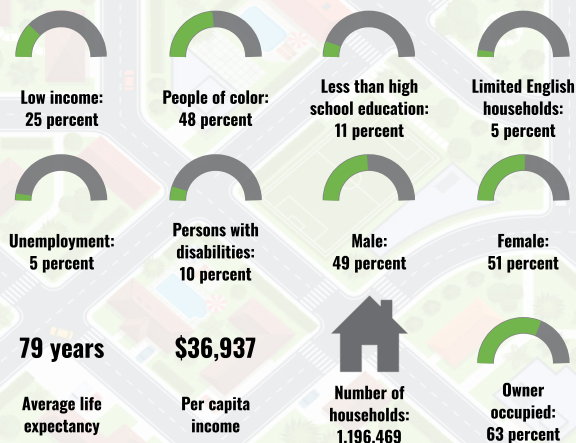
Area in square miles: 4422.23

A3 Landscape

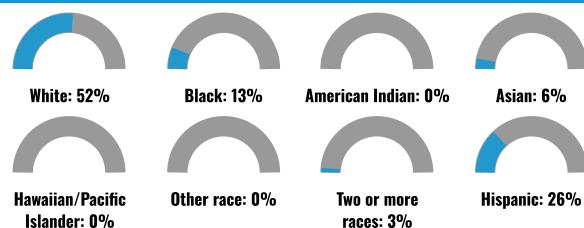


May 29, 2024
 Project 1
 Search Result (point)
 Counties
 0 20 40 80 mi
 0 37.5 75 150 km
 Source: Parks & Wildlife, Esri, TomTom, Garmin, FAO, NOAA, USGS, EPA, USPS, USFWS, EPA OE

COMMUNITY INFORMATION



BREAKDOWN BY RACE



BREAKDOWN BY AGE

LANGUAGES SPOKEN AT HOME

LANGUAGE	PERCENT
English	74%
Spanish	18%
Other Indo-European	2%
Chinese (including Mandarin, Cantonese)	1%

Vietnamese	1%
Other Asian and Pacific Island	1%
Arabic	1%
Other and Unspecified	1%
Total Non-English	26%

EJScreen Community Report



LIMITED ENGLISH SPEAKING BREAKDOWN



Notes: Numbers may not sum to totals due to rounding. Hispanic population can be of any race. Source: U.S. Census Bureau, American Community Survey (ACS) 2017-2021. Life expectancy data comes from the Centers for Disease Control.

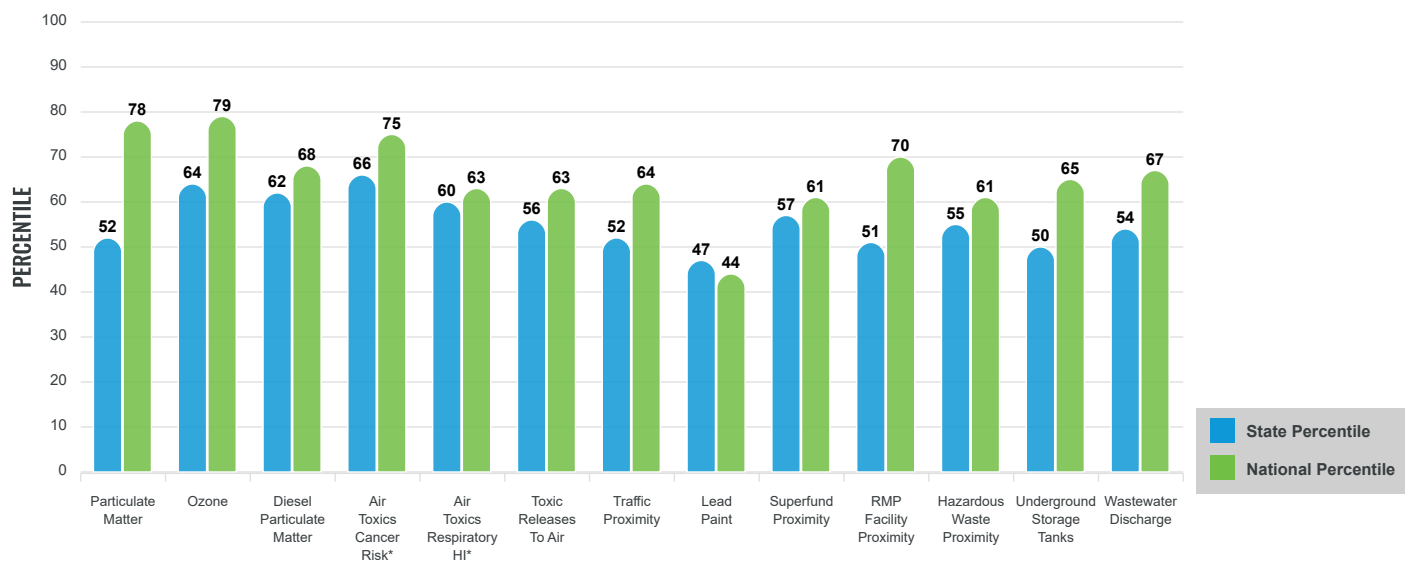
Environmental Justice & Supplemental Indexes

The environmental justice and supplemental indexes are a combination of environmental and socioeconomic information. There are thirteen EJ indexes and supplemental indexes in EJScreen reflecting the 13 environmental indicators. The indexes for a selected area are compared to those for all other locations in the state or nation. For more information and calculation details on the EJ and supplemental indexes, please visit the [EJScreen website](#).

EJ INDEXES

The EJ indexes help users screen for potential EJ concerns. To do this, the EJ index combines data on low income and people of color populations with a single environmental indicator.

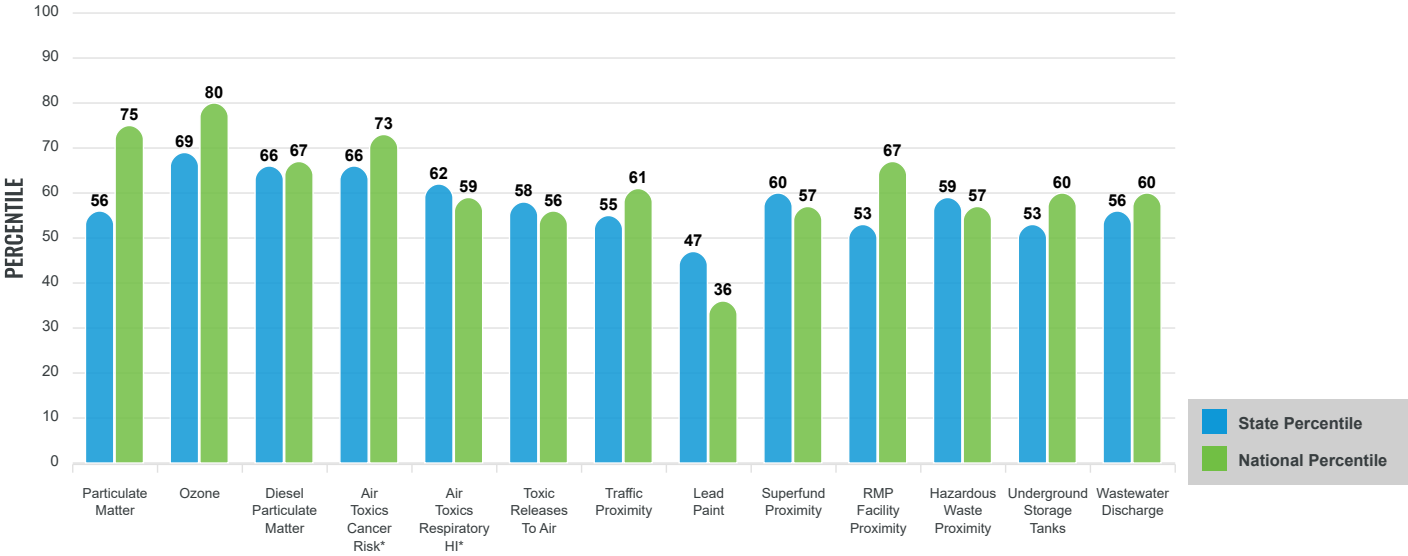
EJ INDEXES FOR THE SELECTED LOCATION



SUPPLEMENTAL INDEXES

The supplemental indexes offer a different perspective on community-level vulnerability. They combine data on percent low-income, percent linguistically isolated, percent less than high school education, percent unemployed, and low life expectancy with a single environmental indicator.

SUPPLEMENTAL INDEXES FOR THE SELECTED LOCATION



These percentiles provide perspective on how the selected block group or buffer area compares to the entire state or nation.

Report for County: Denton,Wise,Parker,Tarrant,Johnson

EJScreen Environmental and Socioeconomic Indicators Data

SELECTED VARIABLES	VALUE	STATE AVERAGE	PERCENTILE IN STATE	USA AVERAGE	PERCENTILE IN USA
POLLUTION AND SOURCES					
Particulate Matter ($\mu\text{g}/\text{m}^3$)	9.26	9.11	45	8.08	78
Ozone (ppb)	67.8	64.6	72	61.6	88
Diesel Particulate Matter ($\mu\text{g}/\text{m}^3$)	0.263	0.218	65	0.261	60
Air Toxics Cancer Risk* (lifetime risk per million)	31	28	44	25	52
Air Toxics Respiratory HI*	0.31	0.3	29	0.31	31
Toxic Releases to Air	660	12,000	60	4,600	51
Traffic Proximity (daily traffic count/distance to road)	130	150	66	210	64
Lead Paint (% Pre-1960 Housing)	0.11	0.17	59	0.3	36
Superfund Proximity (site count/km distance)	0.062	0.085	63	0.13	50
RMP Facility Proximity (facility count/km distance)	0.58	0.63	67	0.43	79
Hazardous Waste Proximity (facility count/km distance)	0.76	0.75	70	1.9	56
Underground Storage Tanks (count/km ²)	2	2.3	57	3.9	58
Wastewater Discharge (toxicity-weighted concentration/m distance)	1.6	0.91	97	22	92
SOCIOECONOMIC INDICATORS					
Demographic Index	37%	46%	40	35%	61
Supplemental Demographic Index	13%	17%	43	14%	52
People of Color	48%	58%	40	39%	65
Low Income	25%	34%	41	31%	47
Unemployment Rate	5%	5%	57	6%	56
Limited English Speaking Households	5%	8%	59	5%	74
Less Than High School Education	11%	16%	50	12%	62
Under Age 5	7%	6%	57	6%	65
Over Age 64	11%	14%	46	17%	33
Low Life Expectancy	17%	20%	19	20%	27

*Diesel particulate matter, air toxics cancer risk, and air toxics respiratory hazard index are from the EPA's Air Toxics Data Update, which is the Agency's ongoing, comprehensive evaluation of air toxics in the United States. This effort aims to prioritize air toxics, emission sources, and locations of interest for further study. It is important to remember that the air toxics data presented here provide broad estimates of health risks over geographic areas of the country, not definitive risks to specific individuals or locations. Cancer risks and hazard indices from the Air Toxics Data Update are reported to one significant figure and any additional significant figures here are due to rounding. More information on the Air Toxics Data Update can be found at: <https://www.epa.gov/haps/air-toxics-data-update>.

Sites reporting to EPA within defined area:

Superfund	3
Hazardous Waste, Treatment, Storage, and Disposal Facilities	86

Other community features within defined area:

Schools	1020
Hospitals	63

Water Dischargers	11262
...	
Air Pollution	463
.	
Brownfields	183
.	
Toxic Release Inventory	486
.	

Places of Worship 1300

Other environmental data:

Air Non-attainment Yes
Impaired Waters Yes

Selected location contains American Indian Reservation Lands*	No
Selected location contains a "Justice40 (CEJST)" disadvantaged community	Yes
Selected location contains an EPA IRA disadvantaged community	Yes

Report for County: Denton,Wise,Parker,Tarrant,Johnson

EJScreen Environmental and Socioeconomic Indicators Data

HEALTH INDICATORS					
INDICATOR	VALUE	STATE AVERAGE	STATE PERCENTILE	US AVERAGE	US PERCENTILE
Low Life Expectancy	17%	20%	19	20%	27
Heart Disease	4.9	5.9	32	6.1	24
Asthma	9.3	9.2	52	10	30
Cancer	5	5.2	47	6.1	24
Persons with Disabilities	9.7%	12.3%	37	13.4%	30

CLIMATE INDICATORS					
INDICATOR	VALUE	STATE AVERAGE	STATE PERCENTILE	US AVERAGE	US PERCENTILE
Flood Risk	4%	10%	45	12%	34
Wildfire Risk	35%	30%	65	14%	84

CRITICAL SERVICE GAPS					
INDICATOR	VALUE	STATE AVERAGE	STATE PERCENTILE	US AVERAGE	US PERCENTILE
Broadband Internet	8%	15%	41	14%	40
Lack of Health Insurance	15%	18%	44	9%	84
Housing Burden	Yes	N/A	N/A	N/A	N/A
Transportation Access	Yes	N/A	N/A	N/A	N/A
Food Desert	Yes	N/A	N/A	N/A	N/A

Report for County: Denton,Wise,Parker,Tarrant,Johnson

www.epa.gov/ejscreen



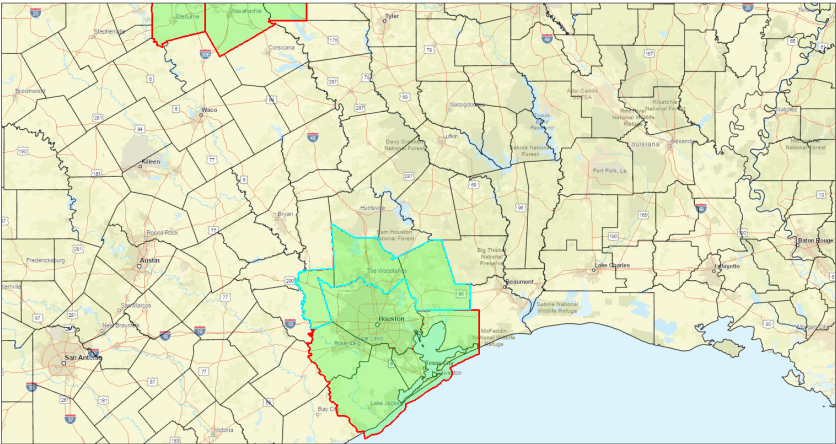
EJScreen Community Report

This report provides environmental and socioeconomic information for user-defined areas, and combines that data into environmental justice and supplemental indexes.

XX

County: Liberty, Montgomery, Waller
Population: 753,452
Area in square miles: 2771.09

A3 Landscape

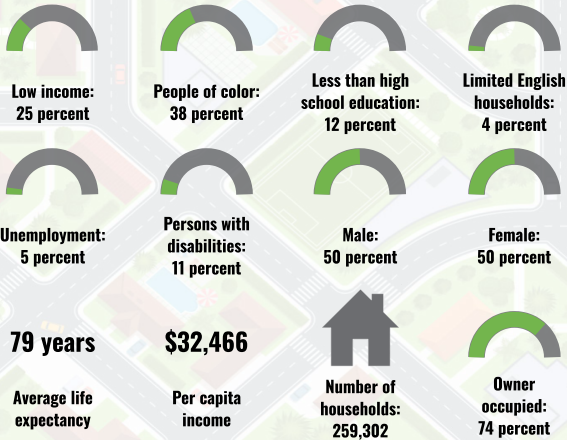


May 29, 2024
Project 4
Project 3
Project 2
Project 1
Counties

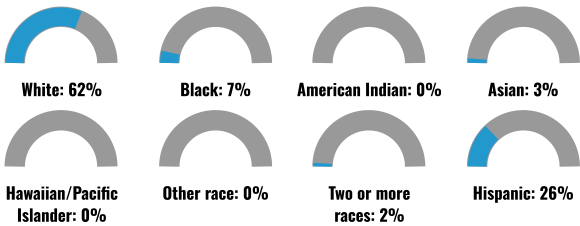
0 25 50 100 mi
0 37.5 75 150 km

Source: Esri & NOAA, COMNAV, Esri, TomTom, Garmin, FAO, NOAA, USGS, EPA, NPS, USFWS, EPA, DOI

COMMUNITY INFORMATION



BREAKDOWN BY RACE



BREAKDOWN BY AGE

LANGUAGES SPOKEN AT HOME

LANGUAGE	PERCENT
English	76%
Spanish	20%
Other Indo-European	1%
Other Asian and Pacific Island	1%

Total Non-English	24%
-------------------	-----

EJScreen Community Report



LIMITED ENGLISH SPEAKING BREAKDOWN



Notes: Numbers may not sum to totals due to rounding. Hispanic population can be of any race. Source: U.S. Census Bureau, American Community Survey (ACS) 2017-2021. Life expectancy data comes from the Centers for Disease Control.

Environmental Justice & Supplemental Indexes

The environmental justice and supplemental indexes are a combination of environmental and socioeconomic information. There are thirteen EJ indexes and supplemental indexes in EJScreen reflecting the 13 environmental indicators. The indexes for a selected area are compared to those for all other locations in the state or nation. For more information and calculation details on the EJ and supplemental indexes, please visit the [EJScreen website](#).

EJ INDEXES

The EJ indexes help users screen for potential EJ concerns. To do this, the EJ index combines data on low income and people of color populations with a single environmental indicator.

SUPPLEMENTAL INDEXES

The supplemental indexes offer a different perspective on community-level vulnerability. They combine data on percent low-income, percent linguistically isolated, percent less than high school education, percent unemployed, and low life expectancy with a single environmental indicator.

These percentiles provide perspective on how the selected block group or buffer area compares to the entire state or nation.

Report for County: Liberty, Montgomery, Waller

EJScreen Environmental and Socioeconomic Indicators Data

SELECTED VARIABLES	VALUE	STATE AVERAGE	PERCENTILE IN STATE	USA AVERAGE	PERCENTILE IN USA
POLLUTION AND SOURCES					
Particulate Matter ($\mu\text{g}/\text{m}^3$)	XX	XX	XX	XX	XX
Ozone (ppb)	XX	XX	XX	XX	XX
Diesel Particulate Matter ($\mu\text{g}/\text{m}^3$)	XX	XX	XX	XX	XX
Air Toxics Cancer Risk* (lifetime risk per million)	XX	XX	XX	XX	XX
Air Toxics Respiratory HI*	XX	XX	XX	XX	XX
Toxic Releases to Air	XX	XX	XX	XX	XX
Traffic Proximity (daily traffic count/distance to road)	XX	XX	XX	XX	XX
Lead Paint (% Pre-1960 Housing)	XX	XX	XX	XX	XX
Superfund Proximity (site count/km distance)	XX	XX	XX	XX	XX
RMP Facility Proximity (facility count/km distance)	XX	XX	XX	XX	XX
Hazardous Waste Proximity (facility count/km distance)	XX	XX	XX	XX	XX
Underground Storage Tanks (count/km ²)	XX	XX	XX	XX	XX
Wastewater Discharge (toxicity-weighted concentration/m distance)	XX	XX	XX	XX	XX
SOCIOECONOMIC INDICATORS					
Demographic Index	XX%	XX%	XX	XX%	XX
Supplemental Demographic Index	XX%	XX%	XX	XX%	XX
People of Color	XX%	XX%	XX	XX%	XX
Low Income	XX%	XX%	XX	XX%	XX
Unemployment Rate	XX%	XX%	XX	XX%	XX
Limited English Speaking Households	XX%	XX%	XX	XX%	XX
Less Than High School Education	XX%	XX%	XX	XX%	XX
Under Age 5	XX%	XX%	XX	XX%	XX
Over Age 64	XX%	XX%	XX	XX%	XX
Low Life Expectancy	XX%	XX%	XX	XX%	XX

*Diesel particulate matter, air toxics cancer risk, and air toxics respiratory hazard index are from the EPA's Air Toxics Data Update, which is the Agency's ongoing, comprehensive evaluation of air toxics in the United States. This effort aims to prioritize air toxics, emission sources, and locations of interest for further study. It is important to remember that the air toxics data presented here provide broad estimates of health risks over geographic areas of the country, not definitive risks to specific individuals or locations. Cancer risks and hazard indices from the Air Toxics Data Update are reported to one significant figure and any additional significant figures here are due to rounding. More information on the Air Toxics Data Update can be found at: <https://www.epa.gov/haps/air-toxics-data-update>.

Sites reporting to EPA within defined area:

Superfund XX
Hazardous Waste, Treatment, Storage, and Disposal Facilities XX

Other community features within defined area:

Schools XX
Hospitals XX

Water Dischargers	XX
Air Pollution	XX
Brownfields	XX
Toxic Release Inventory	XX

Places of Worship	XX
-------------------------	----

Other environmental data:

Air Non-attainment	XX
Impaired Waters	XX

Selected location contains American Indian Reservation Lands*	XX
Selected location contains a "Justice40 (CEJST)" disadvantaged community	XX
Selected location contains an EPA IRA disadvantaged community	XX

Report for County: Liberty, Montgomery, Waller

EJScreen Environmental and Socioeconomic Indicators Data

HEALTH INDICATORS

INDICATOR	VALUE	STATE AVERAGE	STATE PERCENTILE	US AVERAGE	US PERCENTILE
Low Life Expectancy	19%	20%	36	20%	43
Heart Disease	5.7	5.9	46	6.1	41
Asthma	9.2	9.2	52	10	30
Cancer	5.6	5.2	62	6.1	37
Persons with Disabilities	10.4%	12.3%	42	13.4%	35

CLIMATE INDICATORS

INDICATOR	VALUE	STATE AVERAGE	STATE PERCENTILE	US AVERAGE	US PERCENTILE
Flood Risk	8%	10%	69	12%	60
Wildfire Risk	16%	30%	61	14%	82

CRITICAL SERVICE GAPS

INDICATOR	VALUE	STATE AVERAGE	STATE PERCENTILE	US AVERAGE	US PERCENTILE
Broadband Internet	9%	15%	43	14%	42
Lack of Health Insurance	16%	18%	47	9%	86

Housing Burden	XX	N/A	N/A	N/A	N/A
Transportation Access	XX	N/A	N/A	N/A	N/A
Food Desert	XX	N/A	N/A	N/A	N/A

Report for County: Liberty, Montgomery, Waller



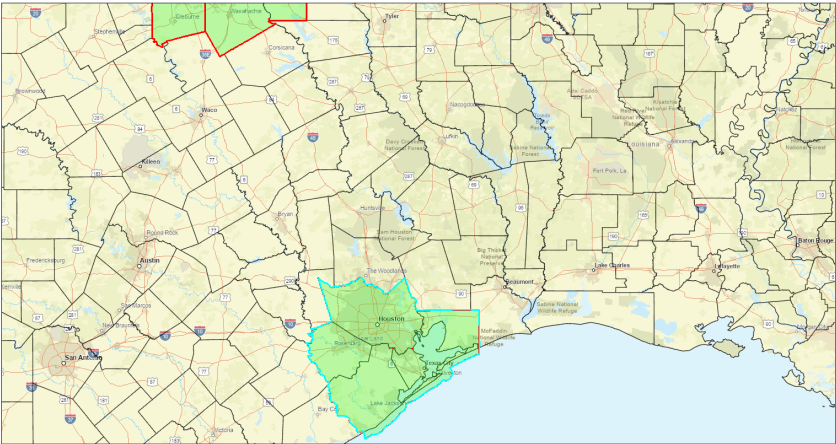
EJScreen Community Report

This report provides environmental and socioeconomic information for user-defined areas, and combines that data into environmental justice and supplemental indexes.

XX

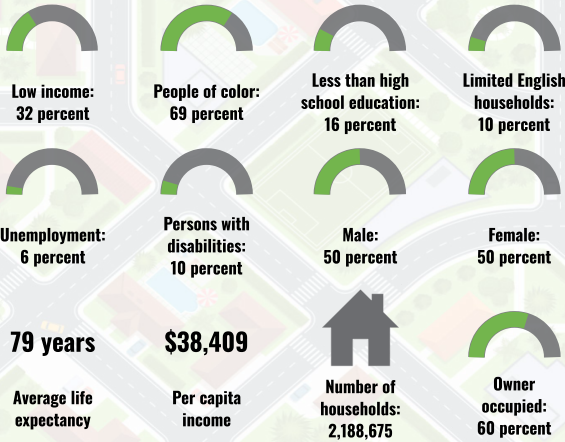
County: Brazoria,Fort Bend,Galveston,Chambers,Harris
Population: 6,265,370
Area in square miles: 0.00

A3 Landscape

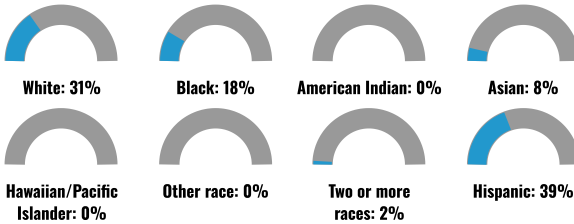


May 29, 2024
Project 3
Project 2
Project 1
Counties
Scale: 0 25 50 100 mi / 0 37.5 75 150 km
Source: Esri, DeLorme, Garmin, IGN, Intermap, Inc., Swire, GEBCO, USGS, NOAA, NPS, USFWS, EPA, DOI

COMMUNITY INFORMATION



BREAKDOWN BY RACE



BREAKDOWN BY AGE

LANGUAGES SPOKEN AT HOME

LANGUAGE	PERCENT
English	59%
Spanish	31%
French, Haitian, or Cajun	1%
Other Indo-European	3%

Chinese (including Mandarin, Cantonese)	1%
Vietnamese	2%
Tagalog (including Filipino)	1%
Other Asian and Pacific Island	1%
Arabic	1%
Other and Unspecified	1%
Total Non-English	41%

EJScreen Community Report



LIMITED ENGLISH SPEAKING BREAKDOWN



Notes: Numbers may not sum to totals due to rounding. Hispanic population can be of any race. Source: U.S. Census Bureau, American Community Survey (ACS) 2017-2021. Life expectancy data comes from the Centers for Disease Control.

Environmental Justice & Supplemental Indexes

The environmental justice and supplemental indexes are a combination of environmental and socioeconomic information. There are thirteen EJ indexes and supplemental indexes in EJScreen reflecting the 13 environmental indicators. The indexes for a selected area are compared to those for all other locations in the state or nation. For more information and calculation details on the EJ and supplemental indexes, please visit the [EJScreen website](#).

EJ INDEXES

The EJ indexes help users screen for potential EJ concerns. To do this, the EJ index combines data on low income and people of color populations with a single environmental indicator.

SUPPLEMENTAL INDEXES

The supplemental indexes offer a different perspective on community-level vulnerability. They combine data on percent low-income, percent linguistically isolated, percent less than high school education, percent unemployed, and low life expectancy with a single environmental indicator.

These percentiles provide perspective on how the selected block group or buffer area compares to the entire state or nation.

Report for County: Brazoria,Fort Bend,Galveston,Chambers,Harris

EJScreen Environmental and Socioeconomic Indicators Data

SELECTED VARIABLES	VALUE	STATE AVERAGE	PERCENTILE IN STATE	USA AVERAGE	PERCENTILE IN USA
POLLUTION AND SOURCES					
Particulate Matter ($\mu\text{g}/\text{m}^3$)	XX	XX	XX	XX	XX
Ozone (ppb)	XX	XX	XX	XX	XX
Diesel Particulate Matter ($\mu\text{g}/\text{m}^3$)	XX	XX	XX	XX	XX
Air Toxics Cancer Risk* (lifetime risk per million)	XX	XX	XX	XX	XX
Air Toxics Respiratory HI*	XX	XX	XX	XX	XX
Toxic Releases to Air	XX	XX	XX	XX	XX
Traffic Proximity (daily traffic count/distance to road)	XX	XX	XX	XX	XX
Lead Paint (% Pre-1960 Housing)	XX	XX	XX	XX	XX
Superfund Proximity (site count/km distance)	XX	XX	XX	XX	XX
RMP Facility Proximity (facility count/km distance)	XX	XX	XX	XX	XX
Hazardous Waste Proximity (facility count/km distance)	XX	XX	XX	XX	XX
Underground Storage Tanks (count/km ²)	XX	XX	XX	XX	XX
Wastewater Discharge (toxicity-weighted concentration/m distance)	XX	XX	XX	XX	XX
SOCIOECONOMIC INDICATORS					
Demographic Index	XX%	XX%	XX	XX%	XX
Supplemental Demographic Index	XX%	XX%	XX	XX%	XX
People of Color	XX%	XX%	XX	XX%	XX
Low Income	XX%	XX%	XX	XX%	XX
Unemployment Rate	XX%	XX%	XX	XX%	XX
Limited English Speaking Households	XX%	XX%	XX	XX%	XX
Less Than High School Education	XX%	XX%	XX	XX%	XX
Under Age 5	XX%	XX%	XX	XX%	XX
Over Age 64	XX%	XX%	XX	XX%	XX
Low Life Expectancy	XX%	XX%	XX	XX%	XX

*Diesel particulate matter, air toxics cancer risk, and air toxics respiratory hazard index are from the EPA's Air Toxics Data Update, which is the Agency's ongoing, comprehensive evaluation of air toxics in the United States. This effort aims to prioritize air toxics, emission sources, and locations of interest for further study. It is important to remember that the air toxics data presented here provide broad estimates of health risks over geographic areas of the country, not definitive risks to specific individuals or locations. Cancer risks and hazard indices from the Air Toxics Data Update are reported to one significant figure and any additional significant figures here are due to rounding. More information on the Air Toxics Data Update can be found at: <https://www.epa.gov/haps/air-toxics-data-update>.

Sites reporting to EPA within defined area:

Superfund XX
 Hazardous Waste, Treatment, Storage, and Disposal Facilities XX

Other community features within defined area:

Schools XX
 Hospitals XX

Water Dischargers	XX
Air Pollution	XX
Brownfields	XX
Toxic Release Inventory	XX

Places of Worship	XX
-------------------------	----

Other environmental data:

Air Non-attainment	XX
Impaired Waters	XX

Selected location contains American Indian Reservation Lands*	XX
Selected location contains a "Justice40 (CEJST)" disadvantaged community	XX
Selected location contains an EPA IRA disadvantaged community	XX

Report for County: Brazoria, Fort Bend, Galveston, Chambers, Harris

EJScreen Environmental and Socioeconomic Indicators Data

HEALTH INDICATORS

INDICATOR	VALUE	STATE AVERAGE	STATE PERCENTILE	US AVERAGE	US PERCENTILE
Low Life Expectancy	18%	20%	23	20%	31
Heart Disease	4.9	5.9	32	6.1	24
Asthma	8.8	9.2	35	10	20
Cancer	4.5	5.2	34	6.1	16
Persons with Disabilities	9.4%	12.3%	35	13.4%	28

CLIMATE INDICATORS

INDICATOR	VALUE	STATE AVERAGE	STATE PERCENTILE	US AVERAGE	US PERCENTILE
Flood Risk	18%	10%	86	12%	83
Wildfire Risk	6%	30%	59	14%	80

CRITICAL SERVICE GAPS

INDICATOR	VALUE	STATE AVERAGE	STATE PERCENTILE	US AVERAGE	US PERCENTILE
Broadband Internet	11%	15%	48	14%	49
Lack of Health Insurance	19%	18%	59	9%	91

Housing Burden	XX	N/A	N/A	N/A	N/A
Transportation Access	XX	N/A	N/A	N/A	N/A
Food Desert	XX	N/A	N/A	N/A	N/A

Report for County: Brazoria, Fort Bend, Galveston, Chambers, Harris