

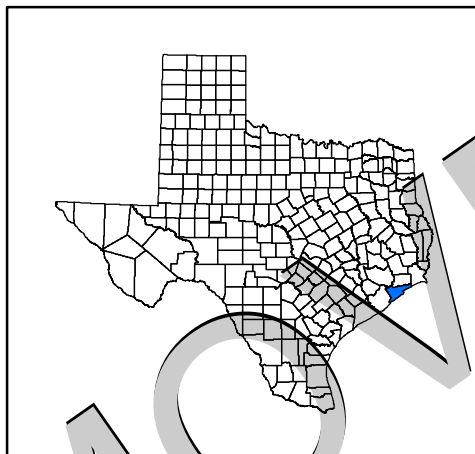
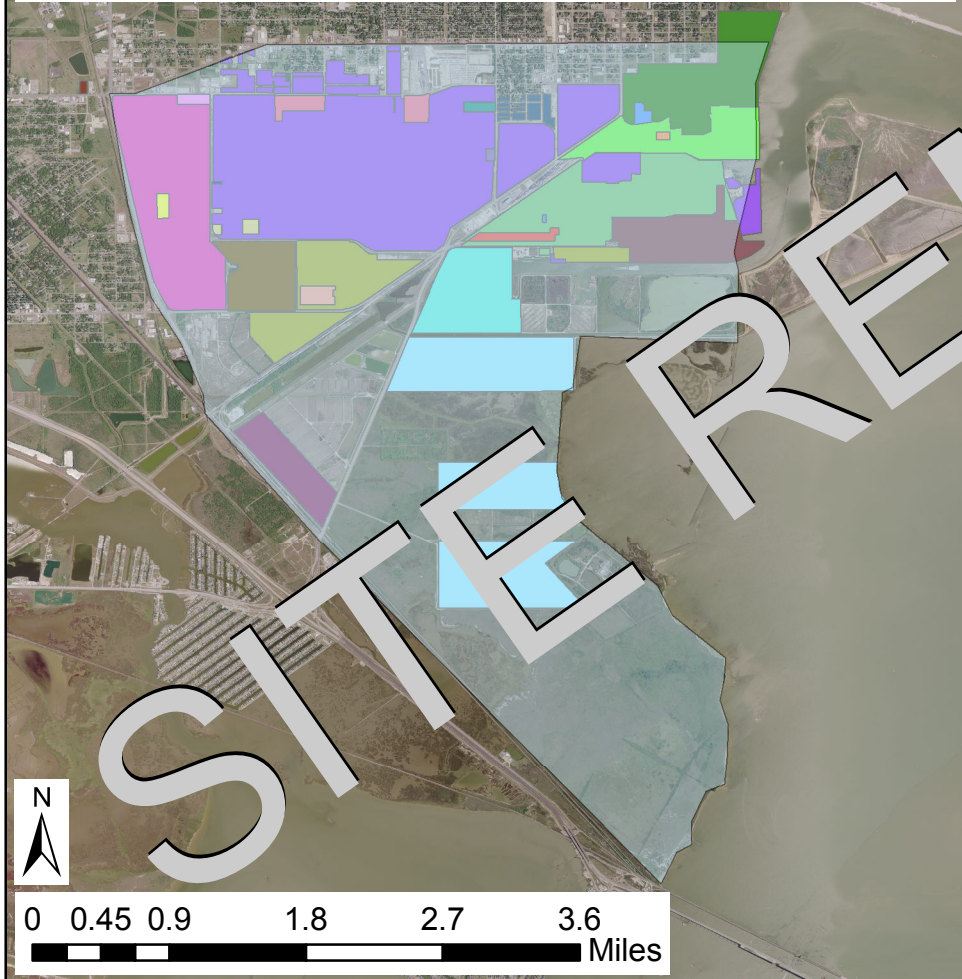

Air Pollutant Watch List Area

APWL1202 - Propionaldehyde Texas City, Galveston County, Texas

Texas Commission on Environmental Quality

Legend

APWL Boundary	RN100219351	RN102536307	RN104579487
RN100210608	RN100220599	RN102560182	RN104864103
RN100212463	RN100224245	RN102707049	RN105320071
RN100212620	RN100238385	RN103934493	RN105644223
RN100217231	RN100872977	RN104095435	RN106898257
RN100218627	RN102217502	RN104248141	
RN100218767	RN102535077	RN104574918	

Map created on August 2, 2016

This map was generated by the Toxicology Division (TD) of the Texas Commission on Environmental Quality. No claims are made to the accuracy or completeness of the data, or to the suitability of the map for a particular use. This APWL area of concern may contain facilities which have not been identified by the TD. For more information regarding this map, please contact the TD at (512)239-1795.

Where is the Area of Concern Located?

- * South of TX Avenue/State Hwy 348
- * East of Hwy 146
- * West of Galveston Bay (West Bay)

Why is this Location and Pollutant(s) on the APWL?

During the 2000 and 2001 mobile monitoring projects, concentrations of propionaldehyde were detected above the odor-based air monitoring comparison value (AMCV) downwind of Dow Chemical (formerly Union Carbide). Although no odorous levels were detected in the 2004 mobile monitoring project, odorous levels were detected during the 2008 mobile monitoring project. In 2015, the odor-based AMCV for propionaldehyde was updated from 9 ppb to 40 ppb to more appropriately address odor nuisance conditions rather than mere detection of the pollutant. The primary source of propionaldehyde emissions made significant improvements to its facility to reduce emissions and the potential for odor nuisance conditions. The facility also conducted an ambient air monitoring study, and none of the measured air concentrations were above the current odor-based AMCV of 40 ppb. Together, these factors support the delisting of Texas City and propionaldehyde from the APWL.

Annual evaluations may be accessed here:

<http://www.tceq.texas.gov/implementation/tox/regmemo/AirMain.html>

Information on AMCVs may be accessed here:

<http://www.tceq.texas.gov/implementation/tox/AirToxics.html#amcv>