



April 15, 2026

Dear Sir or Ma'am:

The Texas Institute for Applied Environmental Research (TIAER) cordially invites you and your neighbors to a meeting regarding the upcoming Recreational Use Attainability Analysis (RUAA) for Beans Creek. An RUAA is a study used by the Texas Commission on Environmental Quality (TCEQ)

At this meeting, you will have the opportunity to learn about the project and provide
. The meeting will be held:

April 29, 2026 from 5:30 - 7PM
Twin Lakes Community Center
114 State Highway 59
Jacksboro, Texas 76458

An agenda for the meeting is enclosed and a map to the meeting place is printed on the back of this invitation.

Beans Creek was added to the *Texas 303(d) List* (of impaired waters) in 2020 due to elevated levels of bacteria. *E coli* bacteria, found in feces of warm-blooded animals, indicate the possible presence of pathogens that could cause illness if water is ingested. Bacteriological criteria are set to support the designated uses of Texas water bodies to ensure water quality standards are consistent with the risk of immersion and ingestion of water. In Texas, citizens have remarked that some streams in their area are designated for recreational use but are dry most of the year or not used by people for recreational purposes. In response to these and similar concerns, TIAER is conducting this study for TCEQ to verify that the recreational use designation supports the activities that occur on Beans Creek. The goal is to evaluate the information and ensure the stream is managed in the best interest of the public.

On weekends throughout the summer, we will be in the area talking with local residents to determine if and how this stream is used for recreation. We will also conduct field surveys related to recreational use and observe the general appearance of the stream and its surrounding area.

We recognize that local landowners and communities have valuable personal knowledge of their local streams. We are looking forward to talking with you about the recreational uses that occur on Beans Creek. **At this meeting, stakeholders will be asked to participate and provide guidance on site identification for recreational use field survey collection and to provide input on historical and current uses of this stream.** Your participation is fundamental to the success of this project. More information and a map of the watershed area will be provided at the meeting.

If you have any questions before the meeting date, please feel free to contact me at 254-968-0513 or ltaylor@tarleton.edu. I look forward to seeing you at the Twin Lakes Community Center on April 29th at 5:30 PM.

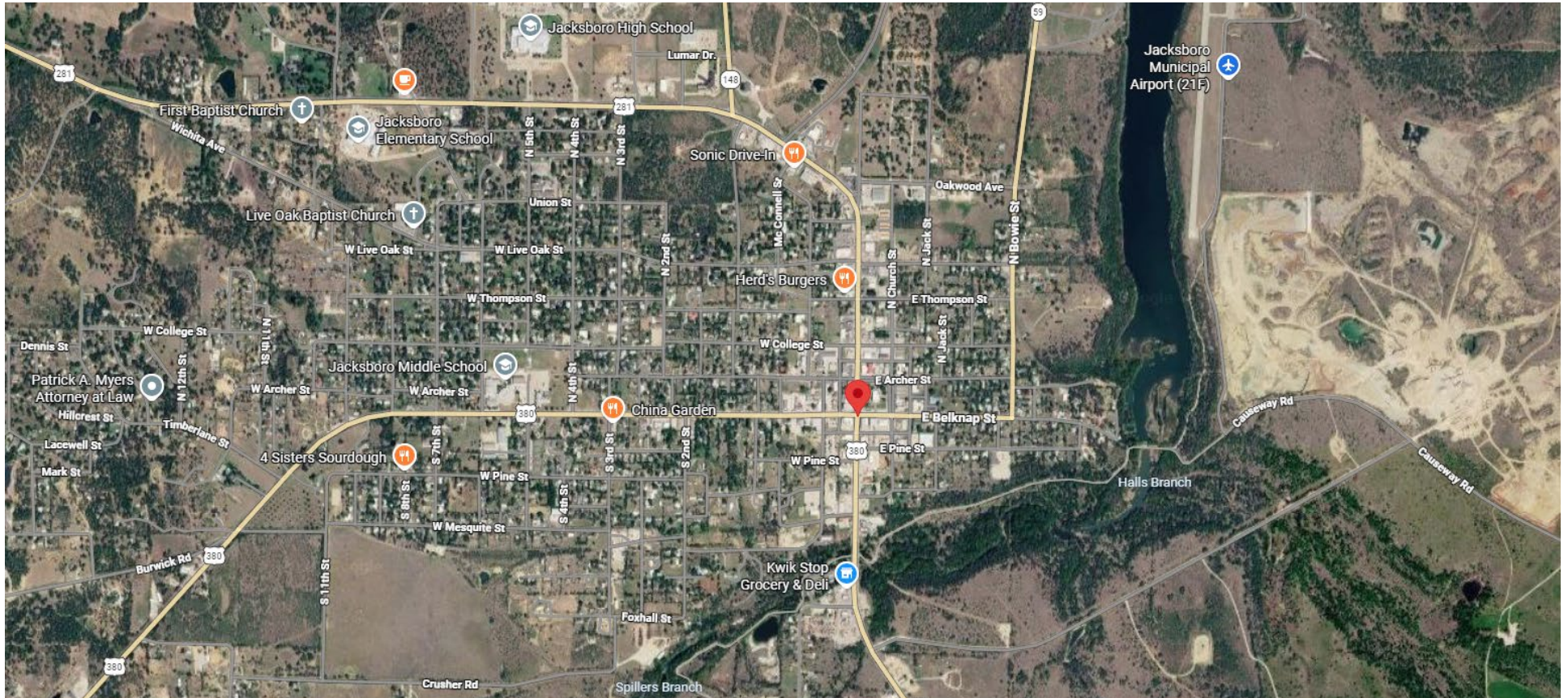
Sincerely,

A handwritten signature in blue ink that reads "leah Taylor".

Leah Taylor
Senior Project Director, TIAER at Tarleton State University
Enclosure: 1



Texas Institute for
Applied Environmental
RESEARCH
TARLETON STATE UNIVERSITY



Twin Lakes Community Center
114 State Highway 59
Jacksboro, Texas

TEXAS INSTITUTE FOR APPLIED ENVIRONMENTAL RESEARCH

Box T-0410, Stephenville, TX 76402 | Office (254) 968-9567 | Fax (254) 968-9336 | www.tarleton.edu/tiaer