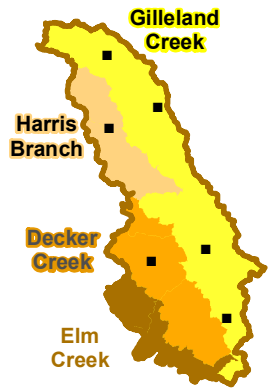
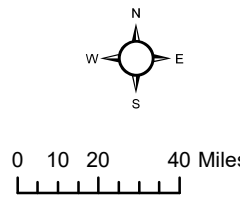
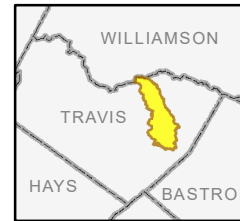




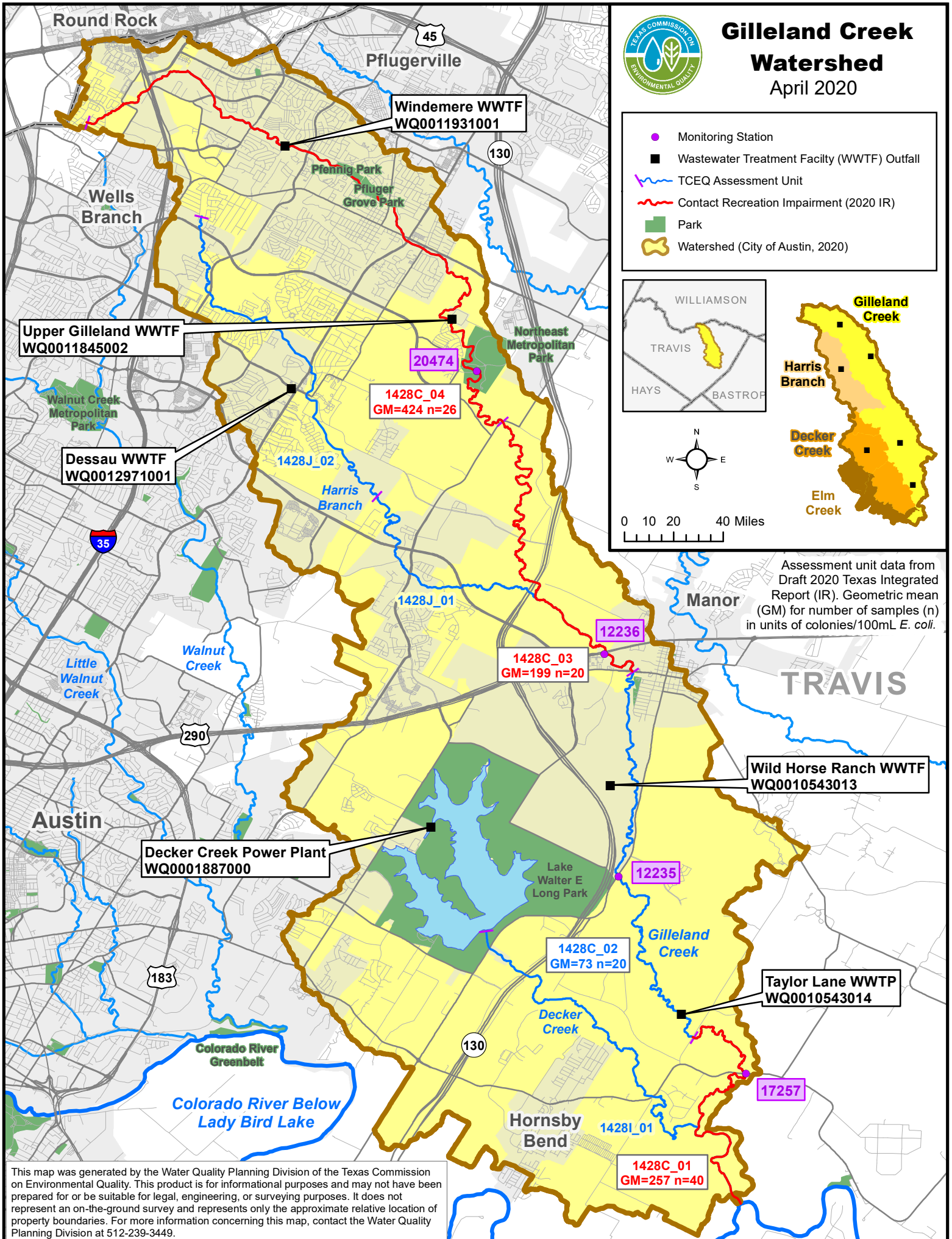
Gilleland Creek Watershed

April 2020

- Monitoring Station
- Wastewater Treatment Facility (WWTF) Outfall
- TCEQ Assessment Unit
- Contact Recreation Impairment (2020 IR)
- Park
- Watershed (City of Austin, 2020)



Assessment unit data from Draft 2020 Texas Integrated Report (IR). Geometric mean (GM) for number of samples (n) in units of colonies/100mL *E. coli*.



Upper Gilleland WWTF
WQ0011845002

Dessau WWTF
WQ0012971001

Decker Creek Power Plant
WQ0001887000

Windemere WWTF
WQ0011931001

Wild Horse Ranch WWTF
WQ0010543013

Taylor Lane WWTP
WQ0010543014

20474
1428C_04
GM=424 n=26

12236
1428C_03
GM=199 n=20

12235

1428C_02
GM=73 n=20

1428C_01
GM=257 n=40

17257

This map was generated by the Water Quality Planning Division of the Texas Commission on Environmental Quality. This product is for informational purposes and may not have been prepared for or be suitable for legal, engineering, or surveying purposes. It does not represent an on-the-ground survey and represents only the approximate relative location of property boundaries. For more information concerning this map, contact the Water Quality Planning Division at 512-239-3449.