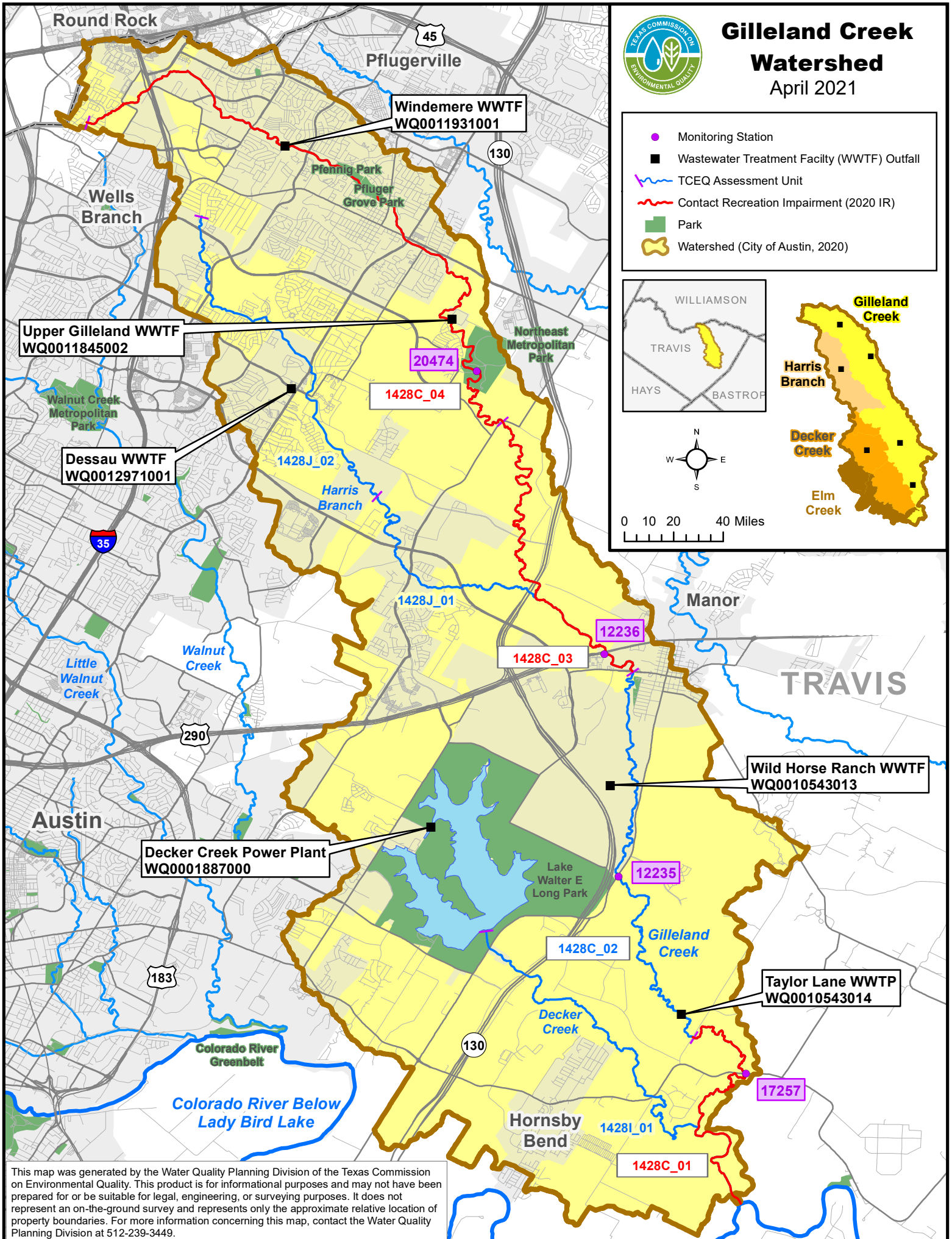
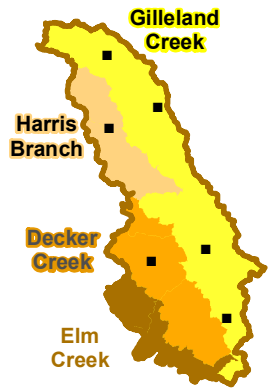
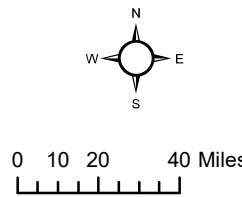
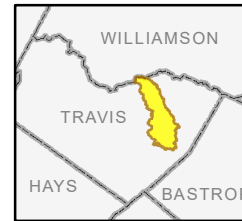




Gilleland Creek Watershed

April 2021

- Monitoring Station
- Wastewater Treatment Facility (WWTF) Outfall
- ~ TCEQ Assessment Unit
- ~ Contact Recreation Impairment (2020 IR)
- Park
- 🗺️ Watershed (City of Austin, 2020)



This map was generated by the Water Quality Planning Division of the Texas Commission on Environmental Quality. This product is for informational purposes and may not have been prepared for or be suitable for legal, engineering, or surveying purposes. It does not represent an on-the-ground survey and represents only the approximate relative location of property boundaries. For more information concerning this map, contact the Water Quality Planning Division at 512-239-3449.