

GILLELAND CREEK TMDL IMPLEMENTATION PLAN YEAR 2

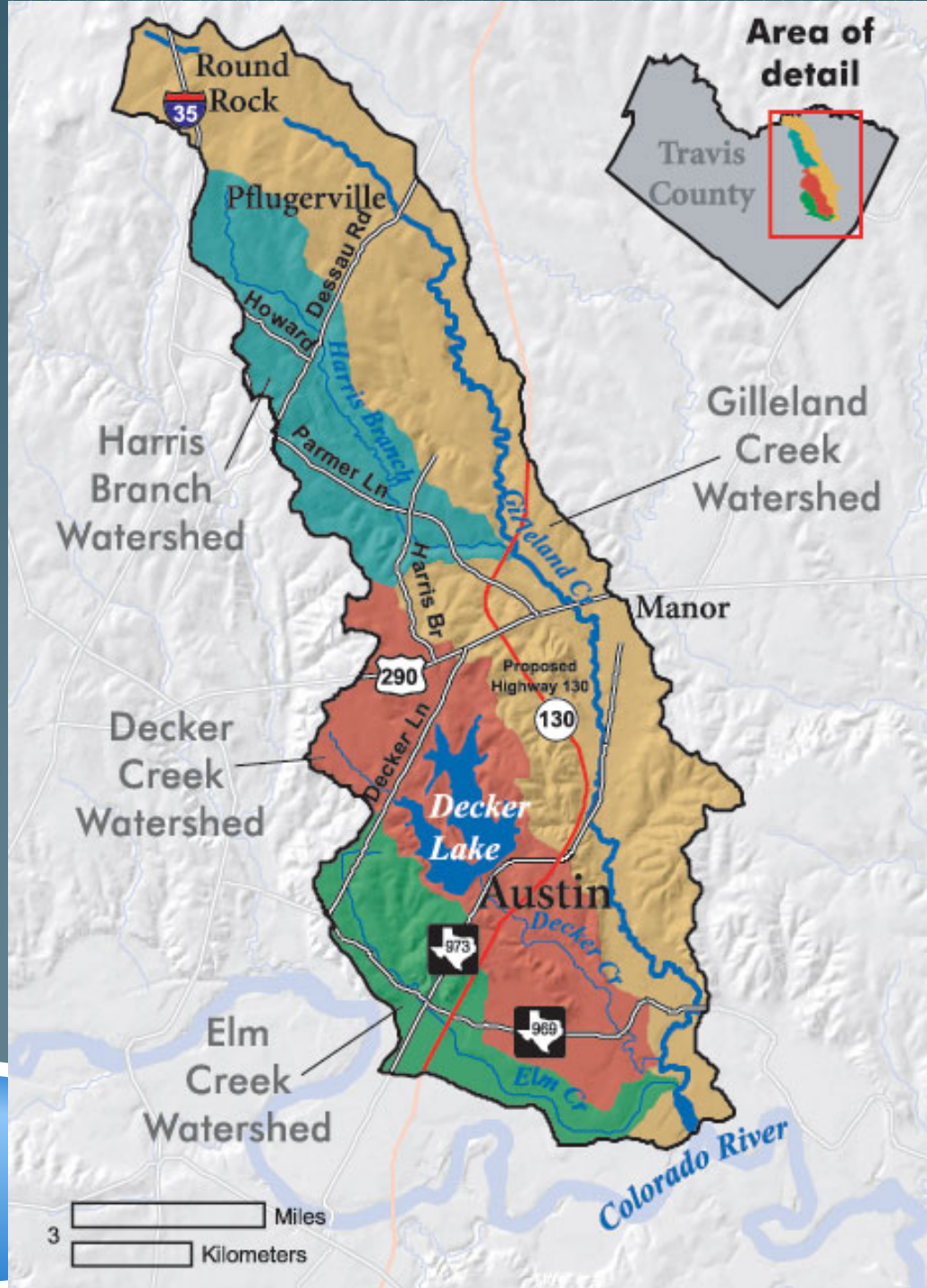
Lauren Young

TCEQ TMDL Program

Wednesday, March 6, 2013

THE TMDL PROCESS





WHY GILLELAND CREEK?

- „ 2004 303(d) list
 - „ Elevated *E. coli* densities
 - „ Contact recreation standard
- „ *E. coli*
 - „ Bacteria commonly found in human and animal waste
 - „ Often indicate the presence of disease-causing microorganisms
 - „ Can pose a threat to public health

GILLELAND CREEK PARTNERS

- " City of Pflugerville,
- " City of Austin
- " City of Round Rock
- " Travis County
- " Lower Colorado River Authority
- " Austin Water Utility,
- " Windermere Utilities, Dessau
- " Fountain Estates
- " UT Center for Research in
- " Water Resources
- " Texas AgriLife Extension
- " Service
- " Texas State Soil and Water
- " Conservation Board
- " Natural Resources
- " Conservation Service
- " US Fish and Wildlife Service
- " Texas Parks and Wildlife
- " Department
- " Texas Stream Team
- " Volunteers in the watershed



ON-SITE SEWAGE FACILITIES

- „ Identify, prioritize, inspect and bring into compliance malfunctioning on-site sewage facilities

- „ Partners involved:

 - City of Austin

 - Travis County

 - TCEQ

OSSF IMPLEMENTATION MEASURES

- „ Inspect up to 15% of highest priority OSSFs
 - „ 27 systems inspected
 - „ 1 malfunctioning system repaired
 - „ 6 abandoned/systems removed from service
- „ Conduct one workshop for OSSF owners
 - „ None
- „ Provide educational materials to OSSF owners
 - „ 59 letters mailed

NATURAL RESOURCE MANAGEMENT

- Programs to work with landowners to protect riparian areas
- Partners involved:
 - Governmental and Non-Governmental Programs
 - Local landowners



IMPLEMENTATION MEASURES

- „ LCRA Creekside Conservation Program
- „ USFWS-Partners for Fish and Wildlife
- „ TSSWCB/SWCD WQMPs developed
- „ TPWD site visits
- „ TWS feral hog control
- „ City of Pflugerville
 - „ Increase street sweeping
 - „ Land acquired in riparian zone
- „ Texas AgriLife Extension Service

RETROFITTING STORM WATER DETENTION BASINS

- „ Determine the effectiveness of retrofitting existing flood control facilities (storm water detention basins) to also perform as water quality facilities

- „ Partners:

- „ Center for Research in Water Resources
at the University of Texas
- „ City of Pflugerville

STORM WATER DETENTION FACILITIES



IMPLEMENTATION MEASURES

- „ QAPP approved 10/15/2012
- „ No permits required
- „ Detention ponds cleaned, prepared
- „ Automated control completion
- „ Monitoring began February 2013



EDUCATION AND OUTREACH

- Coordinate with partners to develop a general campaign to raise public awareness of nonpoint-source contributions of bacteria pollution, specifically pet waste

Partners

LCRA
City of Austin
City of Pflugerville
City of Round Rock
Travis County



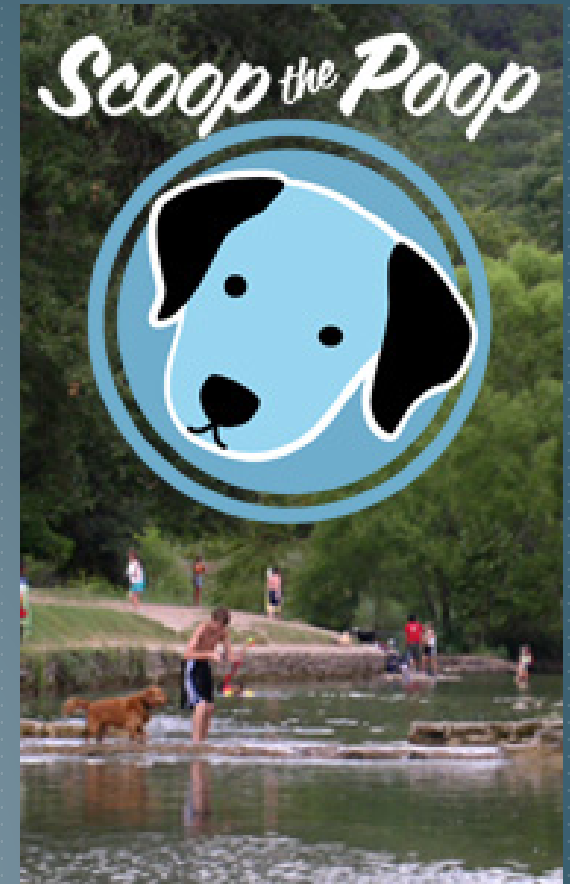
VOLUNTEER MONITORING



- " LCRA CRWN
- " 7 sites
- " 54 monitoring events
- " 79+ volunteer hours
- " \$1,600 approximate value

PET WASTE IMPLEMENTATION MEASURES

- „ Survey park users pet waste habits
- „ Review survey results and construct strategy
- „ Install additional mutt mitt and waste containers
- „ Waste receptacles and signage at pilot parks



PFLUGERVILLE EDUCATION ACTIVITIES

- " Stormwater
- " Water quality
- " Water conservation
- " Pollution prevention
- " BMPs
- " Illicit discharge



WATER QUALITY ORDINANCES

- „ Develop and adopt equivalent water quality ordinances between government jurisdictions

- „ Partners:

City of Austin

City of Pflugerville

Travis County

City of Round Rock

WASTEWATER COLLECTION SYSTEMS

- Annual visual inspection of collection systems within 100 feet from the centerline of the Gilleland Creek and its tributaries.

Partners

City of Austin

Dessau Fountain Estates

City of Pflugerville

Windermere Utility



WASTEWATER MONITORING

- „ Monitor and report *E. coli* concentrations from wastewater treatment facilities

- „ Partners

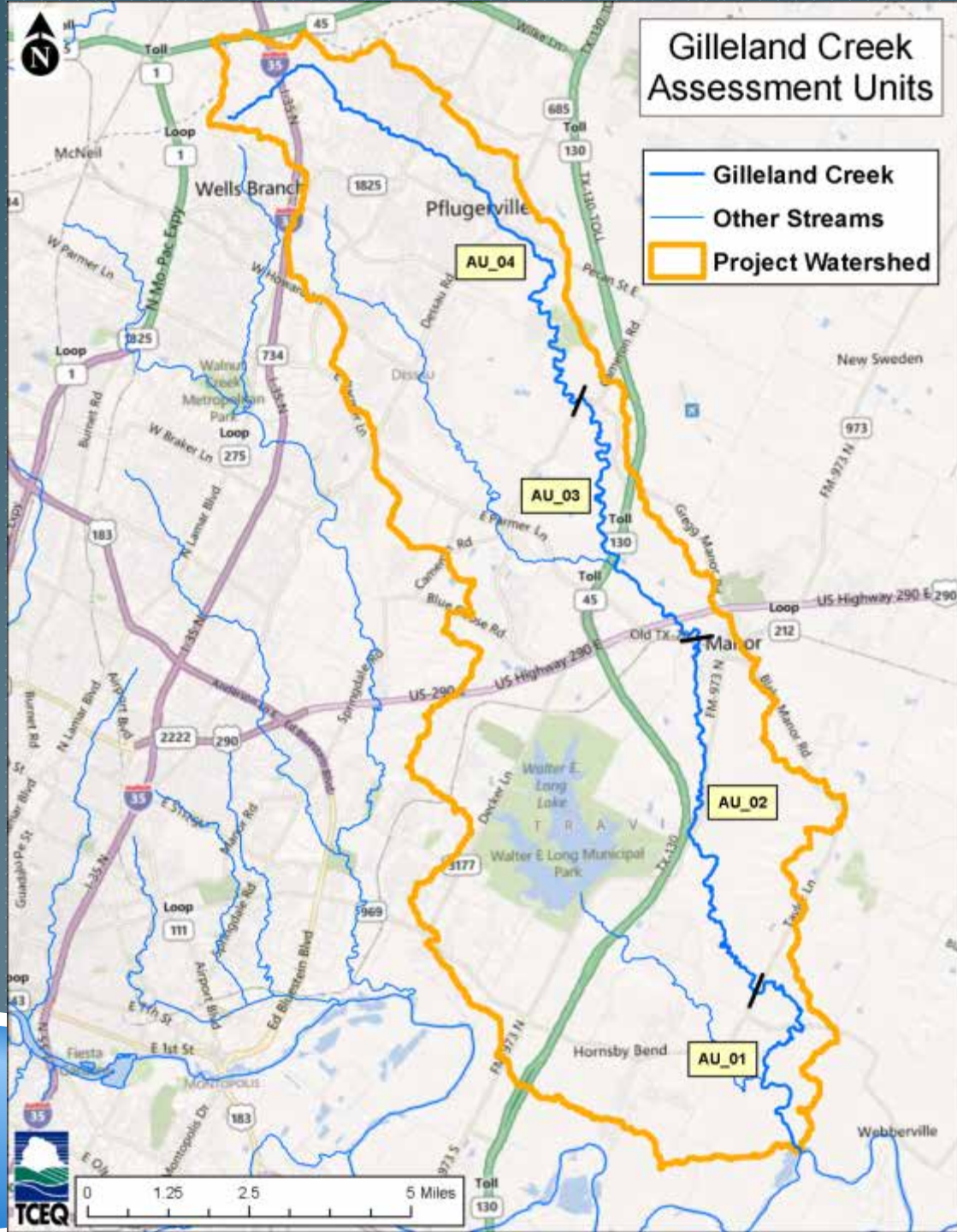
City of Austin

Dessau Fountain Estates

City of Pflugerville

Windermere Utility

TCEQ



TEXAS INTEGRATED REPORTS

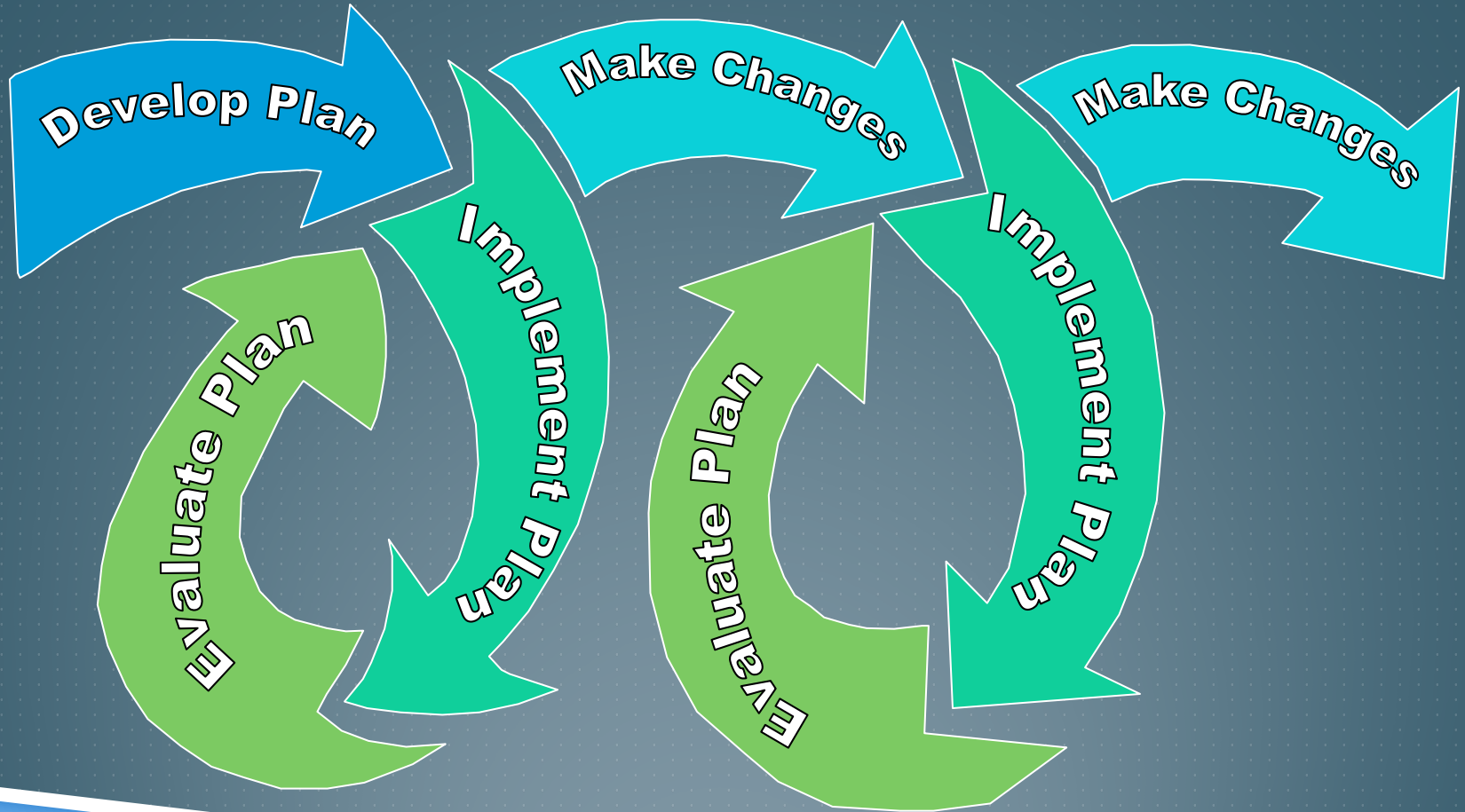
	2004	2006	2008	2010	2012
1428C_01	240	170.0	166.35	129.37	128.82
1428C_02	NA	NA	147.32	109.43	112.25
1428C_03	NA	NA	175.55	175.55	172.58
1428C_04	NA	NA	135.20	144.72	239.84

Standard:
126 cfu/100ml

WHAT'S NEXT?

- „ Year 2
- „ Adaptive Management





TELLING OUR STORY

- „ Other events, activities, tasks
- „ Hyperlinks to project pages, maps, news stories
- „ PSAs
- „ Press releases
- „ Photos
- „ Graphs, charts



- Cleanups, Remediation
- Emergency Response
- Licensing
- Permits, Registrations
- Preventing Pollution
- Recycling
- Reporting
- Rules

- Data
- Forms
- Maps
- Public Notices
- Publications
- Records
- Webcasts

- About Us
- Contact Us

How 's our Customer Service? Please fill out our Customer Satisfaction Survey

Gilleland Creek: Implementing a TMDL to Protect Recreational Uses

The goal of this current project is to keep recreation safe in Gilleland Creek by reducing bacteria levels. The adopted TMDL and the approved I-Plan combined are the road map to improving water quality in the creek.

[Back to TMDL Projects](#)

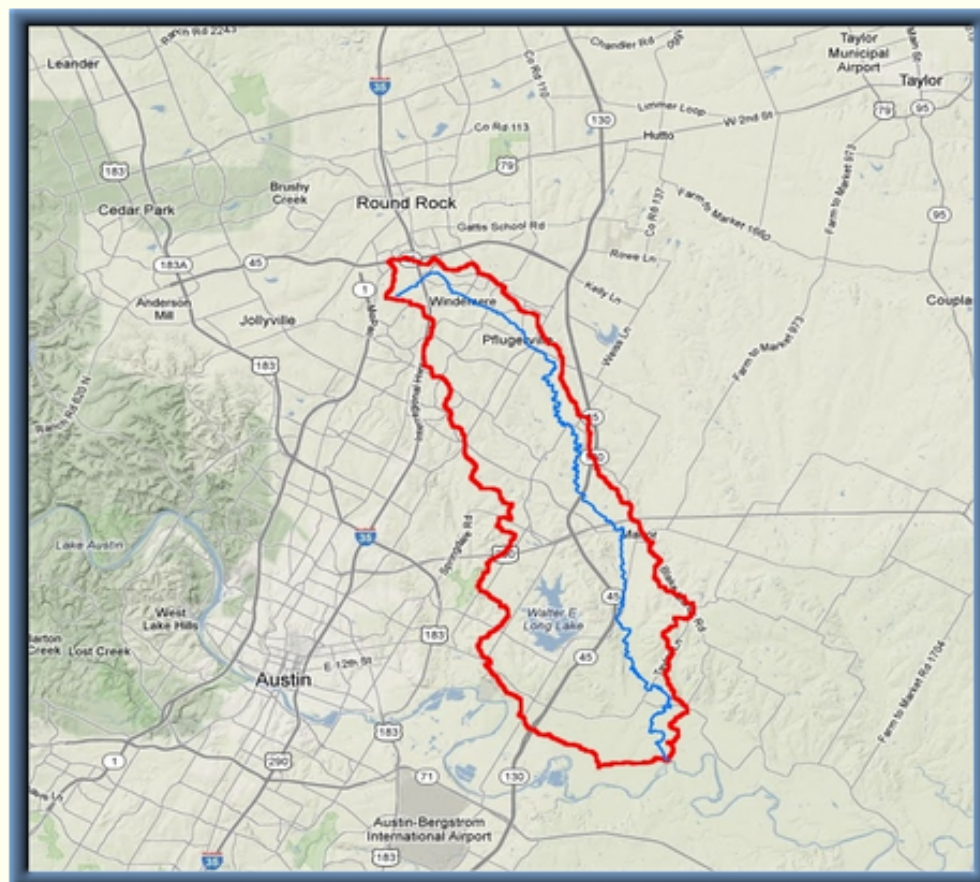
Watershed County: Travis

Parameter: Bacteria

River Basin: Colorado

Segment: 1428C

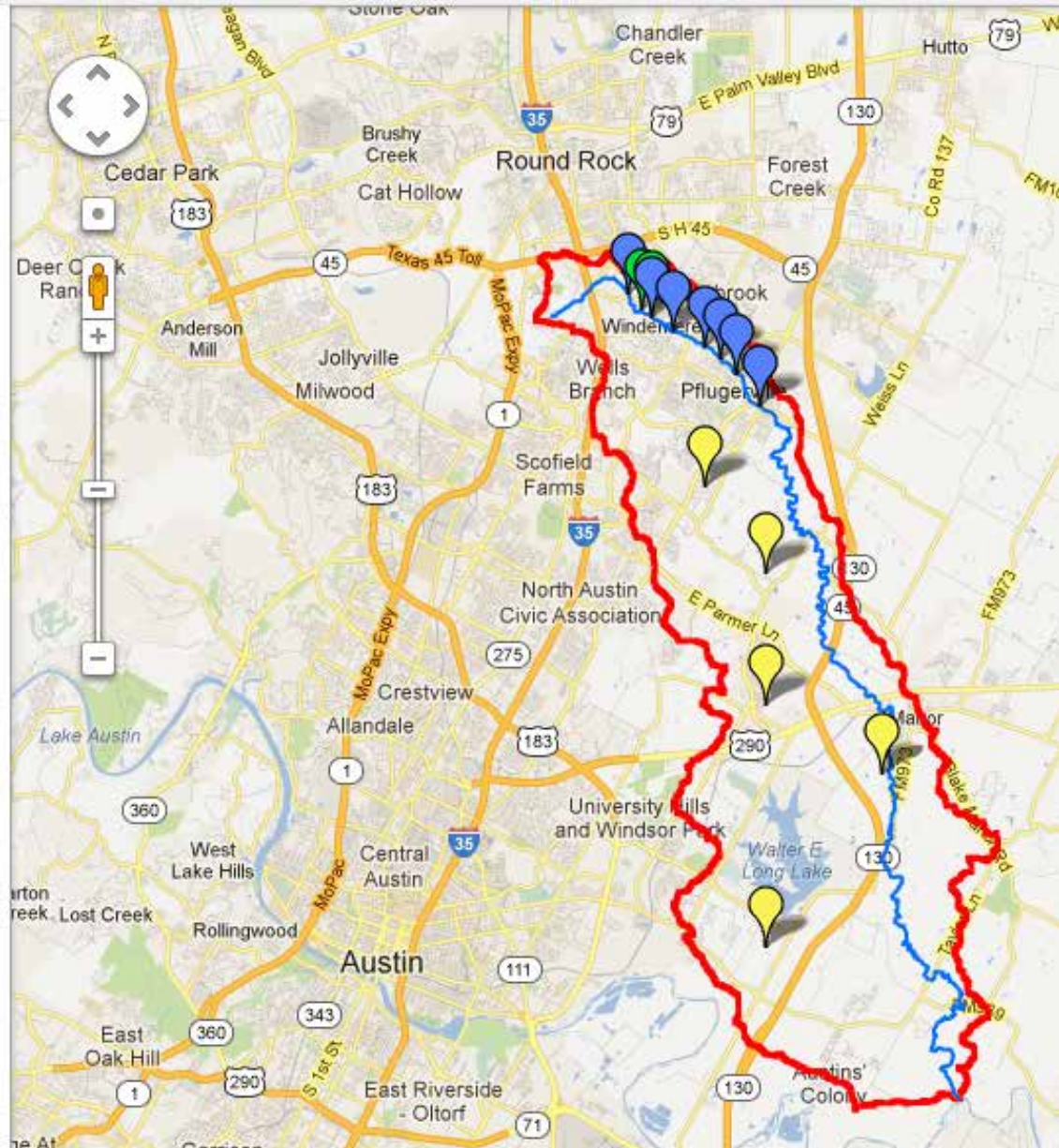
- [Overview](#)
Water quality and the project for Gilleland Creek
- [Get Involved](#)
- [Partners](#)
- [Status and Activities](#)
- [Videos, News, Maps, and Photo Galleries](#)
- [Reports and other Documents](#)
- [Adopted TMDL & Approved I-Plan](#)
- [Contact Us](#)



Click map to see monitoring stations, permitted discharges, flood control project sites, and educational initiatives

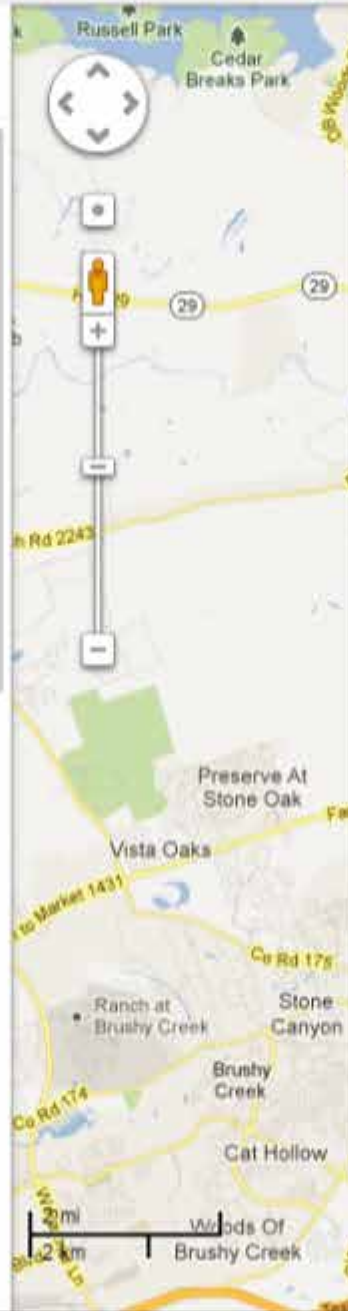
Get directions

My places



Displaying content from www.tceq.texas.gov
 The content displayed below and overlaid onto this map is provided by a third party, and Google is not responsible for it. Information you enter below may become available to the third party.

- Contents
- ☐ Gilleland Creek
 - ☒ Gilleland-AUs
 - ☒ Gilleland Creek Watershed
 - ☒ Monitoring Stations
 - ☒ General Information
 - ☒ Retrofitting Flood Control

[Get directions](#)[My places](#)

LCRA CRWN Site 363

Gilleland Creek at Picadilly Lane

LCRA's [Colorado River Watch Network](#) (CRWN) is the first and largest regional volunteer network of water quality monitors in Texas. Trained volunteers submit water quality data that is reviewed and analyzed by CRWN staff, creating an early warning system that alerts LCRA to potential water quality threats.

[Project Web Page](#)[Directions](#) [Search nearby](#) [Save to map](#) [more](#)

Displaying content from www.tceq.texas.gov

The content displayed below and overlaid onto this map is provided by a third party, and Google is not responsible for it. Information you enter below may become available to the third party.

Contents

- ☒ Gilleland Creek
 - ☒ Gilleland-AUs
 - ☒ Features
 - ☒ 1428C_01
 - ☒ 1428C_02
 - ☒ 1428C_03
 - ☒ 1428C_04
- ☒ Gilleland Creek Watershed
 - ☒ Features
 - ☒ Watershed Outline
- ☒ Monitoring Stations
 - ☒ Site 28
 - ☒ Site 28
LCRA CRWN Site 28 Gilleland Creek at Railro
 - ☒ Site 363
 - ☒ Site 363
LCRA CRWN Site 363 Gilleland Creek at Picad
 - ☒ Site 365
 - ☒ Site 365
LCRA CRWN Site 365 Gilleland Creek below Bo
 - ☒ Site 353

▪ [About Us](#)

▪ [Contact Us](#)



How 's our Customer Service? Please fill out our Customer Satisfaction Survey

Videos

- [Gilleland Creek](#)
- [Austin Scoop the Poop–English](#)
- [Austin Scoop the Poop–Spanish](#)

News Stories

- [Gilleland Creek Watershed Stakeholders Making Progress, 04/2012](#)
- [Regulating Travis County's Creeks, 01/2012](#)
- [Community Comes Together to Update Conservation Plan, 09/23/2011](#)
- [New Creeks Ordinance Could Affect Austin Growth, 07/2011](#)

Maps

Map links take a few minutes to load.

- [Gilleland Creek Watershed](#), ArcGIS Explorer Online
- [Gilleland Creek Watershed Poster](#), LCRA

Photos

- [2008 Gilleland Bacteria Survey](#), Texas Stream Team
- Monitoring Sites
 - [367](#), Gilleland Creek at Edgemere, LCRA
 - [364](#), Gilleland Creek at Grand Avenue Parkway, LCRA
 - [363](#), Gilleland Creek at Picadilly Lane, LCRA
 - [28](#), Gilleland Creek at Railroad Avenue, LCRA
 - [369](#), Gilleland Creek at Swenson Farms, LCRA

▲ [Return to top](#)

Gallery

QUESTIONS

Lauren Young

TCEQ TMDL Program

512-239-3182

lauren.young@tceq.texas.gov

<http://www.tceq.texas.gov/waterquality/tmdl/nav/69-gillelandcreekbacteria>