

GILLELAND CREEK TMDL IMPLEMENTATION PLAN YEAR 5

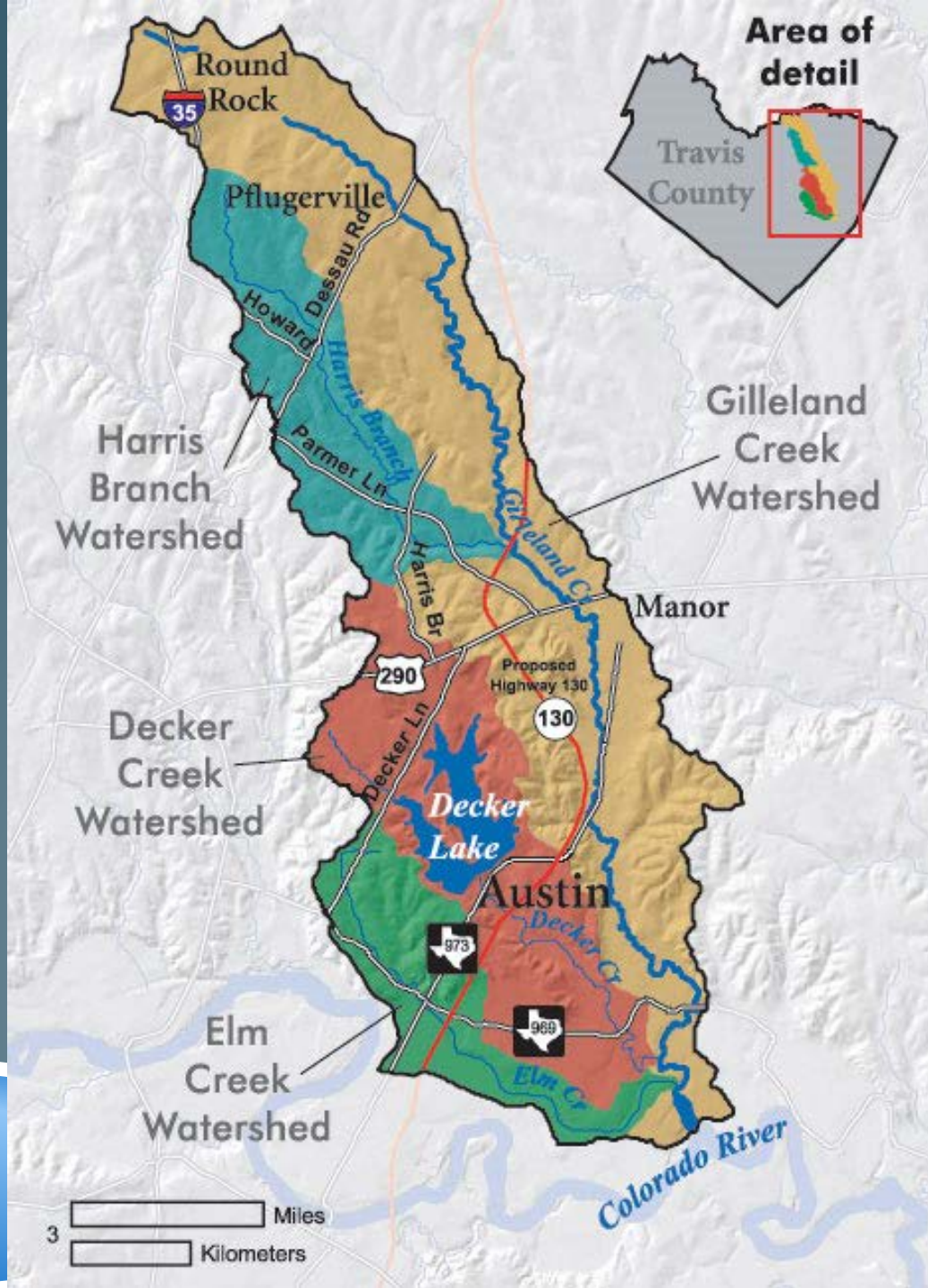
Lauren Young & Louanne Jones

TCEQ TMDL Program

Wednesday, October 19, 2016

THE TMDL PROCESS





WHY GILLELAND CREEK?

- ▶ 2004 303(d) list
 - ▶ Elevated *E. coli* densities
 - ▶ Contact recreation standard
- ▶ *E. coli*
 - ▶ Bacteria commonly found in human and animal waste
 - ▶ Often indicate the presence of disease-causing microorganisms
 - ▶ Can pose a threat to public health

GILLELAND CREEK PARTNERS

- ▶ City of Pflugerville
- ▶ City of Austin
- ▶ City of Round Rock
- ▶ Travis County
- ▶ Lower Colorado River Authority
- ▶ Austin Water Utility
- ▶ Windermere Utilities
- ▶ UT Center for Research in Water Resources
- ▶ Texas AgriLife Extension Service
- ▶ Texas State Soil and Water Conservation Board
- ▶ Natural Resources Conservation Service
- ▶ US Fish and Wildlife Service
- ▶ Texas Stream Team
- ▶ Volunteers in the watershed



ON-SITE SEWAGE FACILITIES

- ▶ Identify, prioritize, inspect and bring into compliance malfunctioning on-site sewage facilities
- ▶ Partners involved:
 - City of Austin
 - Travis County
 - TCEQ

OSSF IMPLEMENTATION MEASURES

- ▶ Evaluate effectiveness. If successful, remaining OSSF systems to be inspected.
- ▶ # OSSFs inspected
- ▶ # Malfunctioning OSSFs repaired/replaced
- ▶ Provide educational materials to owners



NATURAL RESOURCE MANAGEMENT

- ▶ Programs to work with landowners to protect riparian areas
- ▶ Partners involved:
 - Governmental and Non-Governmental Programs
 - Local landowners



IMPLEMENTATION MEASURES

- ▶ LCRA Creekside Conservation Program
- ▶ USFWS-Partners for Fish and Wildlife
- ▶ TSSWCB/SWCD WQMPs developed
- ▶ TWS Feral Hog Abatement Program
- ▶ City of Pflugerville
- ▶ Texas AgriLife Extension Service Lone Star Healthy Streams

EDUCATION AND OUTREACH

- ▶ Coordinate with partners to develop a general campaign to raise public awareness of nonpoint-source contributions of bacteria pollution, specifically pet waste

- ▶ Partners

LCRA

City of Austin

City of Pflugerville

City of Round Rock

Travis County



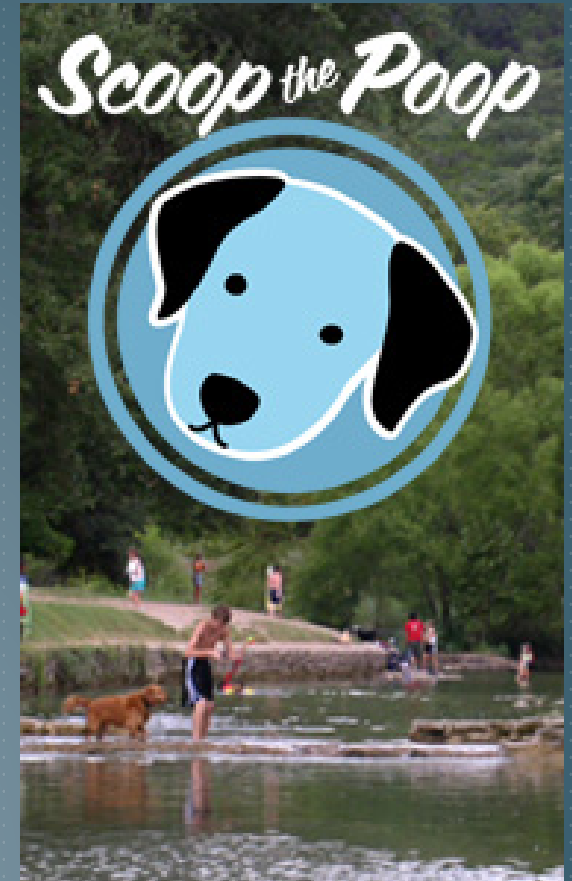
VOLUNTEER MONITORING



- ▶ LCRA CRWN
- ▶ 9 sites

PET WASTE IMPLEMENTATION MEASURES

- ▶ Education/outreach
- ▶ Install additional mutt mitt and waste containers



WATER QUALITY ORDINANCES

- ▶ Implementation of adopted water quality ordinances
- ▶ Recognition program
- ▶ Partners:
 - City of Austin
 - City of Pflugerville
 - Travis County
 - City of Round Rock

RETROFITTING STORM WATER DETENTION BASINS



WASTEWATER COLLECTION SYSTEMS

- ▶ Annual visual inspection of collection systems within 100 feet from the centerline of the Gilleland Creek and its tributaries.

- ▶ Partners

 - City of Austin

 - City of Pflugerville

 - Windermere Utility



WASTEWATER MONITORING

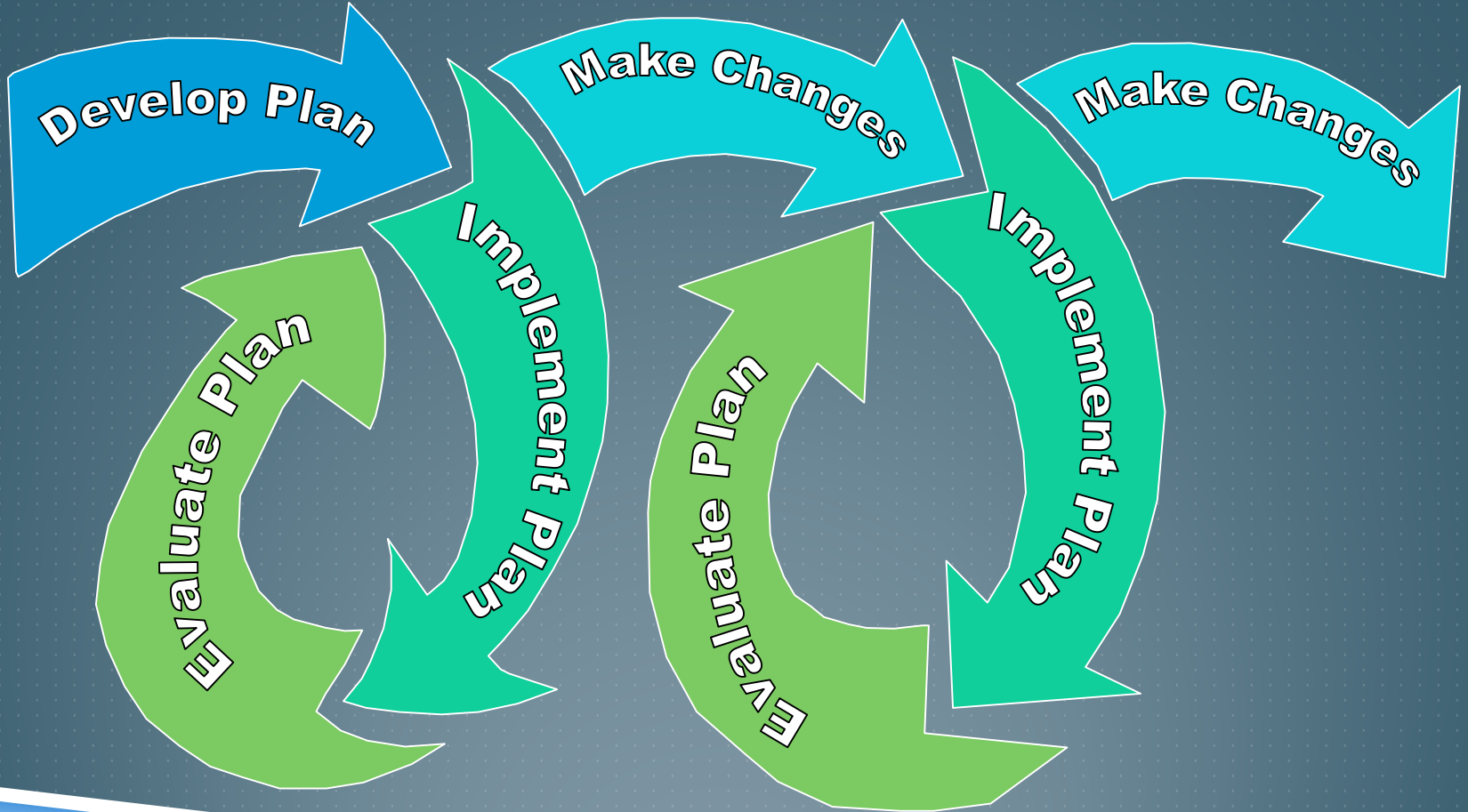
- ▶ Monitor and report *E. coli* concentrations from wastewater treatment facilities
- ▶ Partners
 - City of Austin
 - City of Pflugerville
 - Windermere Utility

TEXAS INTEGRATED REPORTS

	2004	2006	2008	2010	2012	2014
I428C_01	240	170.0	166.35	129.37	128.82	126
I428C_02	NA	NA	147.32	109.43	112.25	105.3
I428C_03	NA	NA	175.55	175.55	172.58	203.96
I428C_04	NA	NA	135.20	144.72	239.84	327.34

Standard:
126 cfu/100ml

WHAT'S NEXT?



MOVING FORWARD

The image features a dark blue background with a subtle white grid pattern. The text "MOVING FORWARD" is positioned in the upper left quadrant in a white, sans-serif font. At the bottom, there is a decorative graphic consisting of two overlapping, curved bands. The upper band is a medium blue, and the lower band is a lighter, teal-like blue. Both bands have a slight gradient and are separated by a thin white line.



- Cleanups, Remediation
- Emergency Response
- Licensing
- Permits, Registration
- Preventing Pollution
- Recycling
- Reporting
- Rules

You are here: Home / Water Quality / Total Maximum Daily Load Program / Projects / Gilleland Creek Bacteria

>> Questions or Comments:
tmdl@tceq.texas.gov

Gilleland Creek: Implementing a Plan to Protect Recreational Uses

The goal of this current project is to keep recreation safe in Gilleland Creek by reducing bacteria levels. The adopted TMDL and the approved I-Plan combined are the road map to improving water quality in the creek.

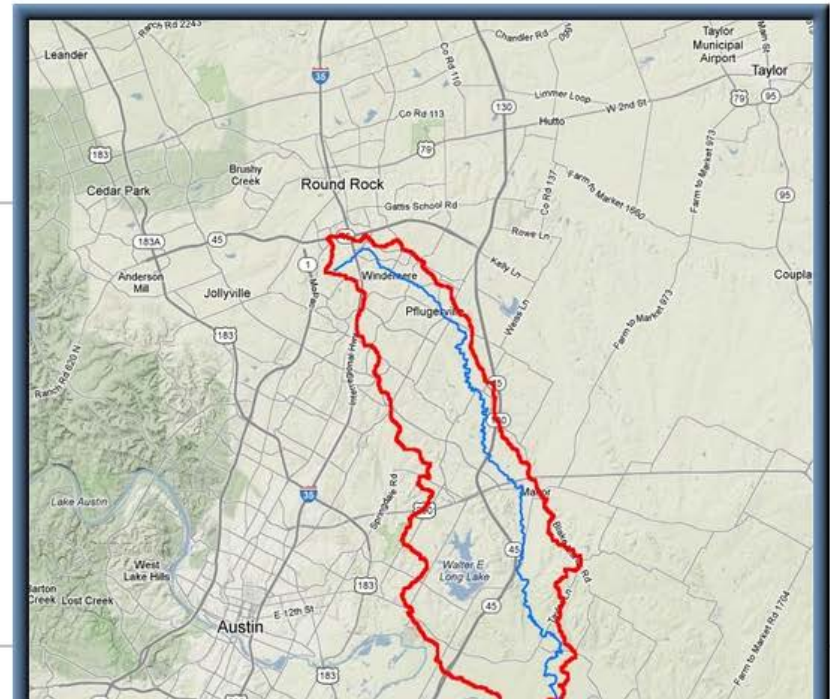
Watershed County: Travis
Parameter: Bacteria
River Basin: Colorado
Segment: 1428C

Project Navigation

- Overview
- Get Involved **UPDATE**
- Partners
- Status and Activities
- Videos, News, Maps, and Photo Galleries
- Reports and other Documents
- Adopted TMDL & Approved I-Plan
- Contact Us

Overview

Water quality testing found that bacteria concentrations

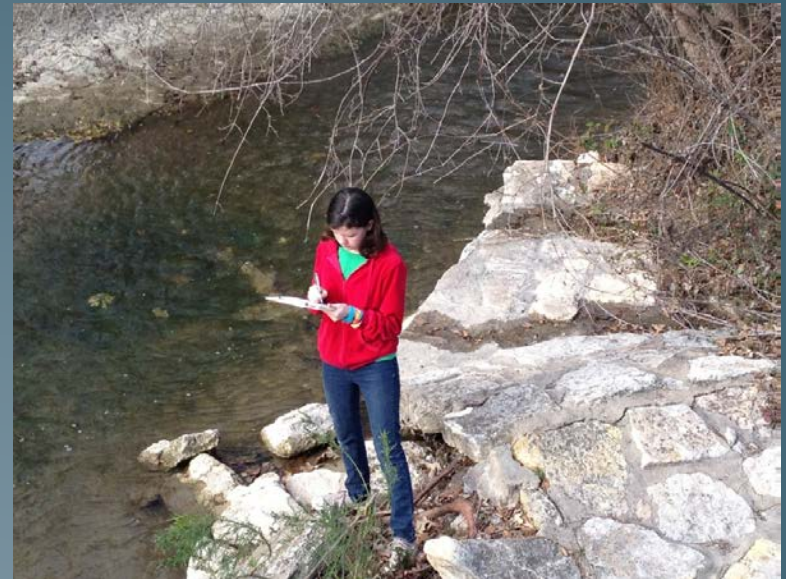


- Data
- Forms
- Maps
- Public Notices
- Publications
- Records
- Webcasts
- TCEQ Online Services
e-Pay, Permits
Licenses, Reporting
Filing, Comments

- About Us
- Contact Us

TELLING OUR STORY

- ▶ Other events, activities, tasks
- ▶ Hyperlinks to project pages, maps, news stories
- ▶ PSAs
- ▶ Press releases
- ▶ Photos
- ▶ Graphs, charts



QUESTIONS

TCEQ TMDL Program

Louanne Jones 512-239-2310

louanne.jones@tceq.texas.gov

University of Texas, Center for Public Policy Dispute Resolution

Suzanne Schwartz 512-232-1194

sschwartz@law.utexas.edu